

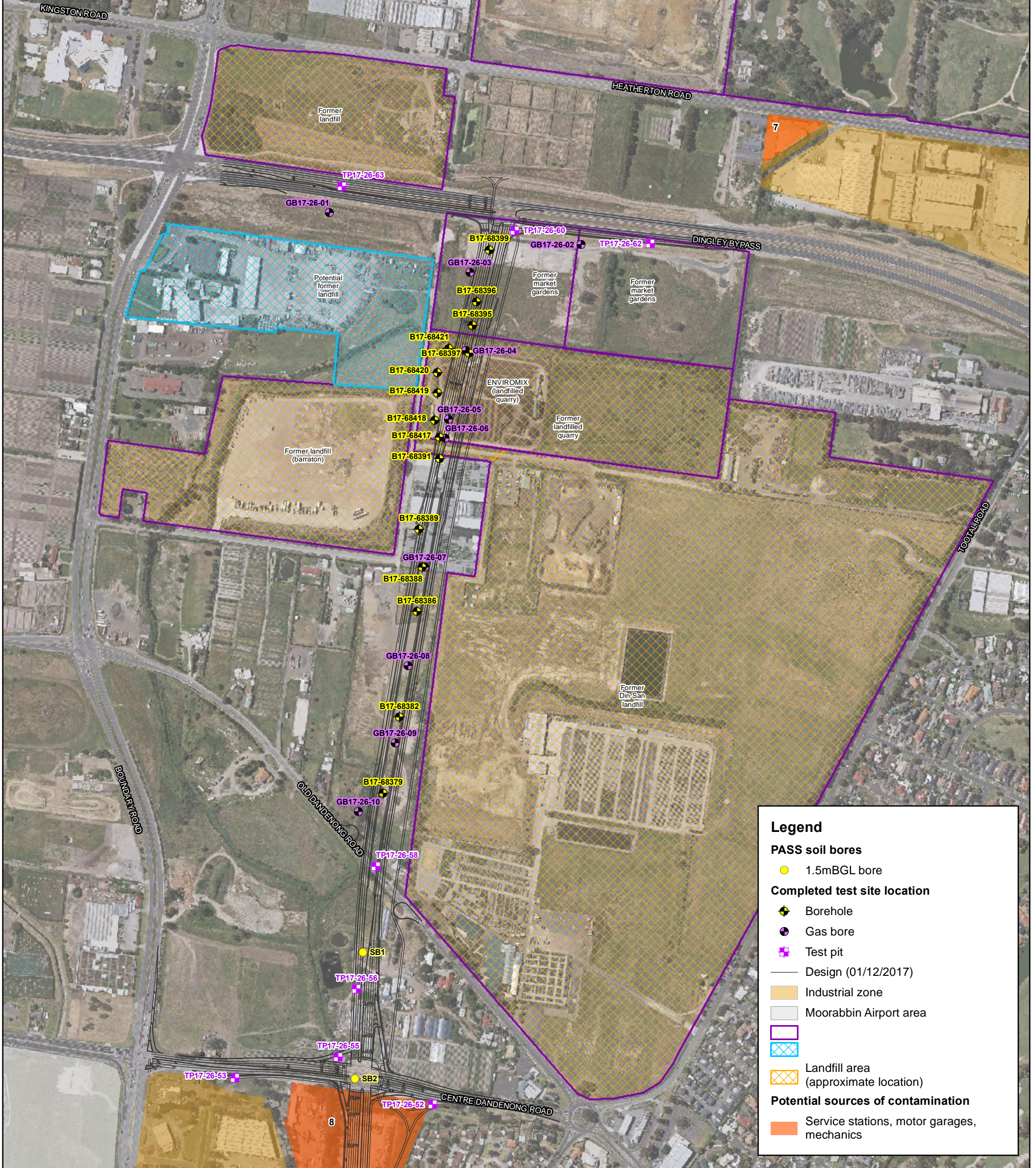
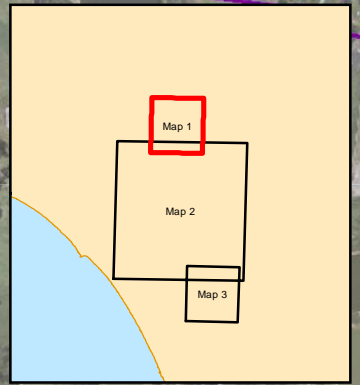
# APPENDIX A

## FIGURES





LocationID	Address	Location
1	Corner Wells Road and Edithvale Road, Aspendale 3195	Service station (7-Eleven)
2	30 Garden Boulevard, Dingley 3172	Chemical manufacturers and/or importers and/or distributors
3	1 Fir Street, Dingley 3172	Essential oil manufacturers and/or distributors; Chemical manufacturers and/or distributors
4	60 Tarnard Drive, Braeside 3195	Packaging materials/plastic bags manufacturers and/or distributors
5	Factory 8/11 Bell Grove, Braeside 3195	Die and press toolmakers; plastic/moulders manufacturers and/or distributors
6	403 Lower Dandenong Road, Dingley 3172	Plastic bottle/containers manufacturers and/or distributors; plastic moulders
7	580 Heatheron Road, Clayton South 3169	Motor garages/mechanic
8	260 Centre Dandenong Road, Dingley Village, 3172	Mechanic (Dingley Village Mechanical Services)
9	2/2 Garden Boulevard, Dingley Village, 3172	Mechanics/car repair shop (Redwood Motors)
10	3/2 Garden Boulevard, Dingley Village, 3172	Mechanics/car repair shop/transmission shop (Speedy Autos)
11	1/7 Bell Grove, Braeside 3195	Chemical manufacturing (Tasman Chemicals)
12	25-27 Park Way, Braeside 3195	Laundry services - industrial scale, potentially includes dry cleaning (Princes Laundry)
13	412/402 Lower Dandenong Road, Braeside, 3195	Service station (United)
14	Boundary & Lwr Dandenong Rds, Braeside, 3195	Service station (BP)



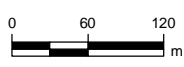
Map: 2135645A\_GIS\_1495\_A

Author: MB



Date: 17/09/2018

Approved by: -



Coordinate system: GDA 1994 MGA Zone 55  
Scale ratio correct when printed at A3

MAJOR ROAD PROJECTS AUTHORITY

VICTORIA State Government

wsp

Engineering and Technical Services for Mordialloc Freeway Upgrade

CLM ESA

Figure 1 – Site locations plan (Northern portion)

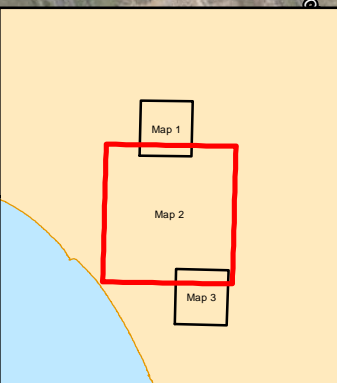
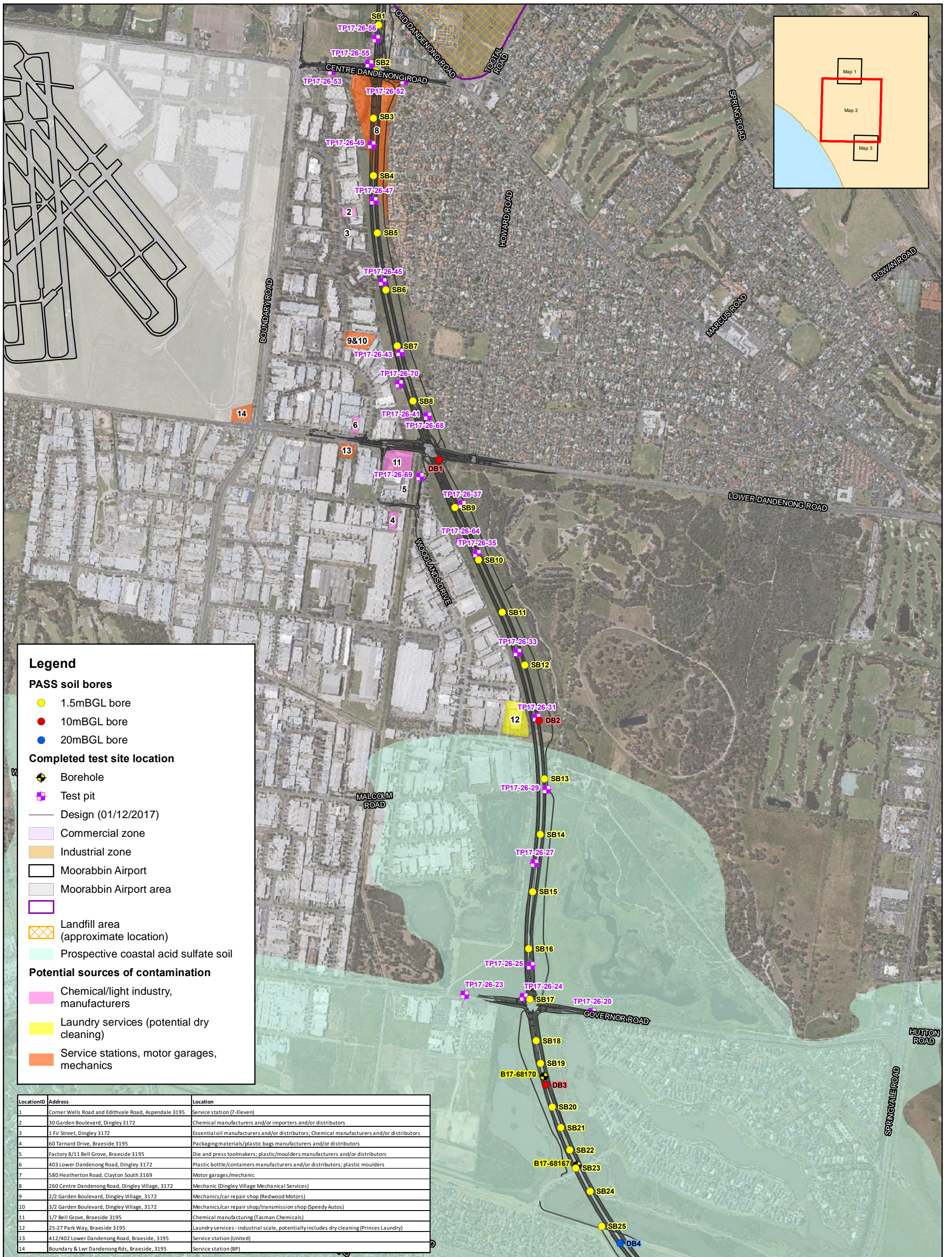
© WSP | Parsons Brinckerhoff - Asia Pacific (WSP | PB). Copyright in the drawings, information and data recorded is the property of WSP | PB. This document and the information are solely for the use of the authorised recipient and this document may not be used, copied or reproduced in whole or part for any purpose other than that which it was supplied by WSP | PB. WSP | PB makes no representation, undertakes no duty and accepts no responsibility to any third party who may use or rely upon this document or the information. NCSI Certified Quality System to ISO 9001. © APPROVED FOR AND ON BEHALF OF WSP | Parsons Brinckerhoff - Asia Pacific.

WAPMELF0101proj\WVicRoads\2135645A\_OSAR\_ENGINEERING\_TECHNICAL\_SE10\_GIS\Projects\Maps\2135645A\_GIS\_1495\_A.mxd

MRPA

www.wsp.com





**Legend**

**PASS soil bores**

- 1.5mBGL bore
- 10mBGL bore
- 20mBGL bore

**Completed test site location**

- Borehole
- Test pit
- Design (01/12/2017)
- Commercial zone
- Industrial zone
- Moorabbin Airport
- Moorabbin Airport area
- Landfill area (approximate location)
- Prospective coastal acid sulfate soil

**Potential sources of contamination**

- Chemical/light industry, manufacturers
- Laundry services (potential dry cleaning)
- Service stations, motor garages, mechanics

LocationID	Address	Location
1	Corner Wells Road and Edithvale Road, Aspendale 3195	Service station (7-Eleven)
2	30 Garden Boulevard, Dingley 3172	Chemical manufacturers and/or importers and/or distributors
3	1 Fir Street, Dingley 3172	Essential oil manufacturers and/or distributors; Chemical manufacturers and/or distributors
4	60 Tarnard Drive, Braeside 3195	Packaging materials/plastic bags manufacturers and/or distributors
5	Factory 8/11 Bell Grove, Braeside 3195	Die and press toolmakers; plastic/moulders manufacturers and/or distributors
6	403 Lower Dandenong Road, Dingley 3172	Plastic bottle/containers manufacturers and/or distributors; plastic moulders
7	580 Heatherton Road, Clayton South 3169	Motor garages/mechanic
8	260 Centre Dandenong Road, Dingley Village, 3172	Mechanic (Dingley Village Mechanical Services)
9	2/2 Garden Boulevard, Dingley Village, 3172	Mechanics/car repair shop (Redwood Motors)
10	3/2 Garden Boulevard, Dingley Village, 3172	Mechanics/car repair shop/transmission shop (Speedy Autos)
11	1/7 Bell Grove, Braeside 3195	Chemical manufacturing (Tasman Chemicals)
12	25-27 Park Way, Braeside 3195	Laundry services - industrial scale, potentially includes dry cleaning (Princes Laundry)
13	412/402 Lower Dandenong Road, Braeside, 3195	Service station (United)
14	Boundary & Lwr Dandenong Rds, Braeside, 3195	Service station (BP)

Map: 2135645A\_GIS\_1495\_A      Author: MB

Date: 17/09/2018      Approved by: -

Data source: VicRoads, Copyright © The State of Victoria, Department of Environment, Land, Water & Planning 2018

Coordinate system: GDA 1994 MGA Zone 55  
Scale ratio correct when printed at A3

© WSP | Parsons Brinckerhoff - Asia Pacific (WSP | PB). Copyright in the drawings, information and data recorded is the property of WSP | PB. This document and the information are solely for the use of the authorised recipient and this document may not be used, copied or reproduced in whole or part for any purpose other than that which it was supplied by WSP | PB. WSP | PB makes no representation, undertakes no duty and accepts no responsibility to any third party who may use or rely upon this document or the information. NCSI Certified Quality System to ISO 9001. © APPROVED FOR AND ON BEHALF OF WSP | Parsons Brinckerhoff - Asia Pacific.

WAPMELF01\proj\WVicRoads\2135645A\_OSAR\_ENGINEERING\_TECHNICAL\_SEV10\_GIS\Projects\Maps\2135645A\_GIS\_1495\_A.mxd

MAJOR ROAD PROJECTS AUTHORITY      VICTORIA State Government

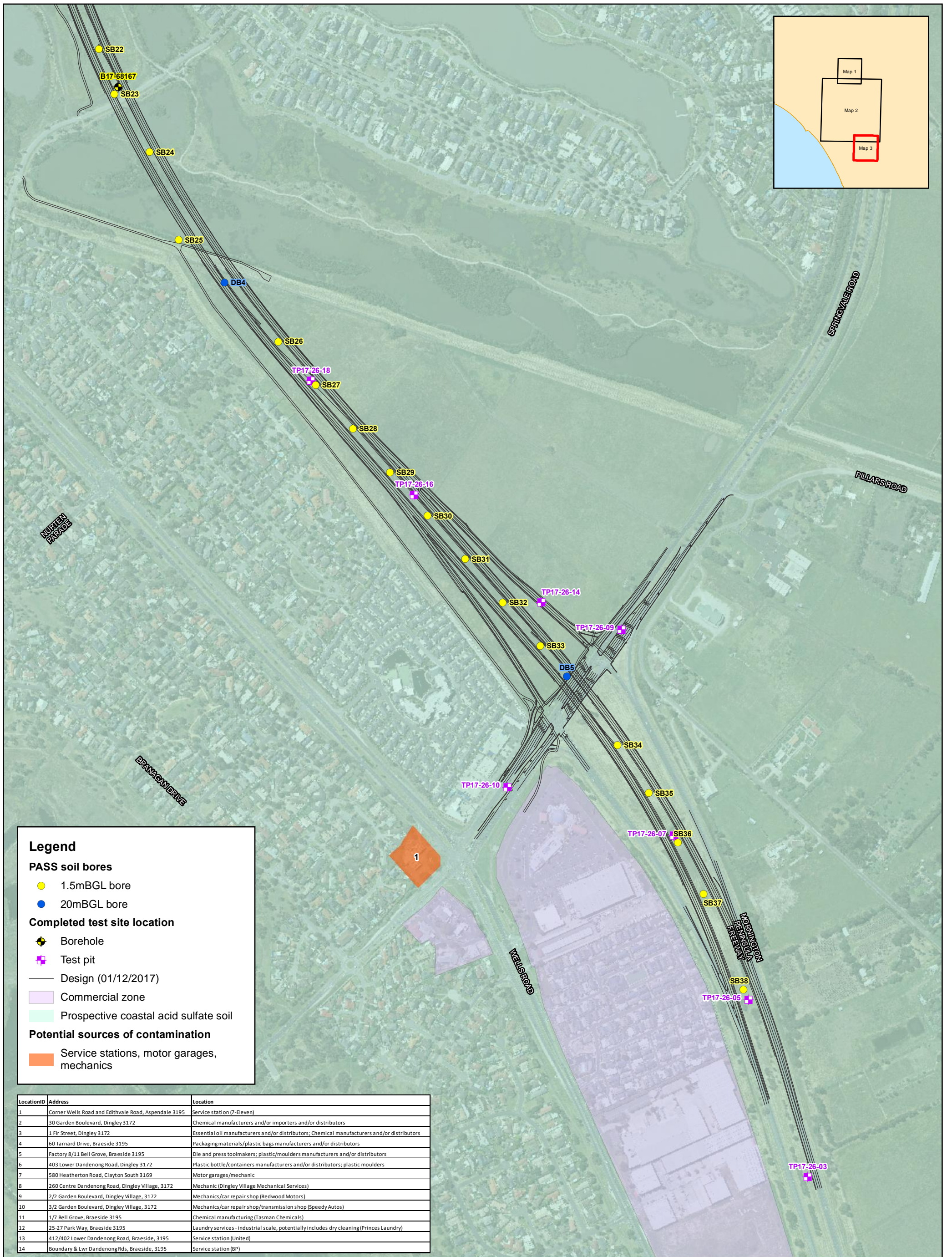
**Engineering and Technical Services for Mordialloc Freeway Upgrade**

CLM ESA

Figure 2 – Site locations plan (Central portion)

MRPA      www.wsp.com





**Legend**

**PASS soil bores**

- 1.5mBGL bore
- 20mBGL bore

**Completed test site location**

- ⊕ Borehole
- ⊕ Test pit
- Design (01/12/2017)
- Commercial zone
- Prospective coastal acid sulfate soil

**Potential sources of contamination**

- Service stations, motor garages, mechanics

LocationID	Address	Location
1	Corner Wells Road and Edithvale Road, Aspendale 3195	Service station (7-Eleven)
2	30 Garden Boulevard, Dingley 3172	Chemical manufacturers and/or importers and/or distributors
3	1 Fir Street, Dingley 3172	Essential oil manufacturers and/or distributors; Chemical manufacturers and/or distributors
4	60 Tarnard Drive, Braeside 3195	Packaging materials/plastic bags manufacturers and/or distributors
5	Factory 8/11 Bell Grove, Braeside 3195	Die and press toolmakers; plastic/moulders manufacturers and/or distributors
6	403 Lower Dandenong Road, Dingley 3172	Plastic bottle/containers manufacturers and/or distributors; plastic moulders
7	580 Heatherton Road, Clayton South 3169	Motor garages/mechanic
8	260 Centre Dandenong Road, Dingley Village, 3172	Mechanic (Dingley Village Mechanical Services)
9	2/2 Garden Boulevard, Dingley Village, 3172	Mechanics/car repair shop (Redwood Motors)
10	3/2 Garden Boulevard, Dingley Village, 3172	Mechanics/car repair shop/transmission shop (Speedy Autos)
11	1/7 Bell Grove, Braeside 3195	Chemical manufacturing (Tasman Chemicals)
12	25-27 Park Way, Braeside 3195	Laundry services - industrial scale, potentially includes dry cleaning (Princes Laundry)
13	412/402 Lower Dandenong Road, Braeside, 3195	Service station (United)
14	Boundary & Lwr Dandenong Rds, Braeside, 3195	Service station (BP)