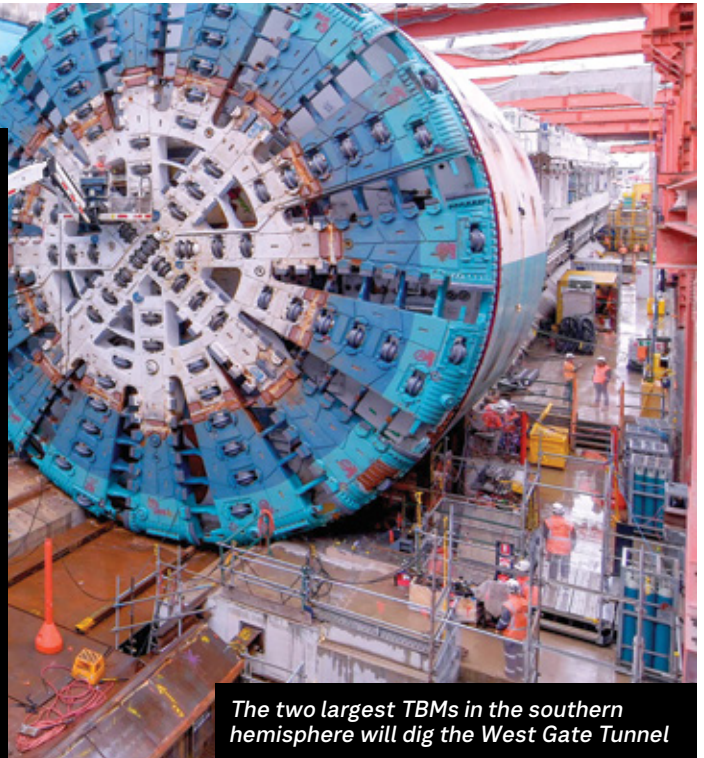


Transforming road and rail travel

We are investing in major road and rail projects in Geelong and the south west as part of Victoria's Big Build.

Geelong Fast Rail, the Geelong Line Upgrade and the West Gate Tunnel will transform travel, making getting to work, school and health services quicker and easier.



The two largest TBMs in the southern hemisphere will dig the West Gate Tunnel

Tunnelling has started on the West Gate Tunnel Project

Tunnel boring machine 'Bella' is making strong progress digging the four kilometre outbound tunnel between Yarraville and the West Gate Freeway in Altona North.

Once complete, the West Gate Tunnel will reduce pressure on the West Gate Freeway, providing an alternative route if there are incidents or delays on this major transport route for Victoria.

The West Gate Bridge is at capacity and the West Gate Freeway is one of our busiest freeways, moving more than 200,000 cars and trucks each day.

To help ease the congestion we've been busy widening the West Gate Freeway from eight to twelve lanes, with these works now 70 per cent complete.

Construction is also underway on a bridge over the Maribyrnong River and an elevated road above Footscray Road, that will eventually connect motorists travelling from Geelong direct to CityLink or central Melbourne.

We'll also have ramps connecting to the port at MacKenzie Road and Appleton Dock Road for trucks between the Port of Melbourne and West Gate Freeway.



Twin tunnels and express lanes



Second river crossing



Save up to 20 minutes travel time



Improved access to Melbourne's north



Four more lanes on the West Gate Freeway



Better access to Melbourne to support Geelong's growth



See how the West Gate Tunnel will improve your journey to and from the city by scanning the QR code or visiting bigbuild.vic.gov.au/explorewgtp



Find out more details about projects in your area by scanning the QR code or visiting bigbuild.vic.gov.au/vicsouthwest



Check out upcoming disruptions on the back

Melbourne Airport Rail takes off

Did you know that once Melbourne Airport Rail is built, people travelling from Geelong will have an easy interchange for direct train travel to the airport?

Passengers on the Geelong Line will be able to change to airport trains at Sunshine, with a one-way journey from Geelong to Melbourne Airport to take around 60 minutes.

Plus, you'll avoid potential road delays and congestion, and you won't need to pay for parking

Melbourne Airport Rail will enable a turn-up-and-go style service with trains every 10 minutes from Melbourne Airport reaching Sunshine Station in around 11 minutes so you can change to Geelong services.

Airport journey time in minutes



Travel times are subject to further amendments due to future infrastructure or service plan changes.

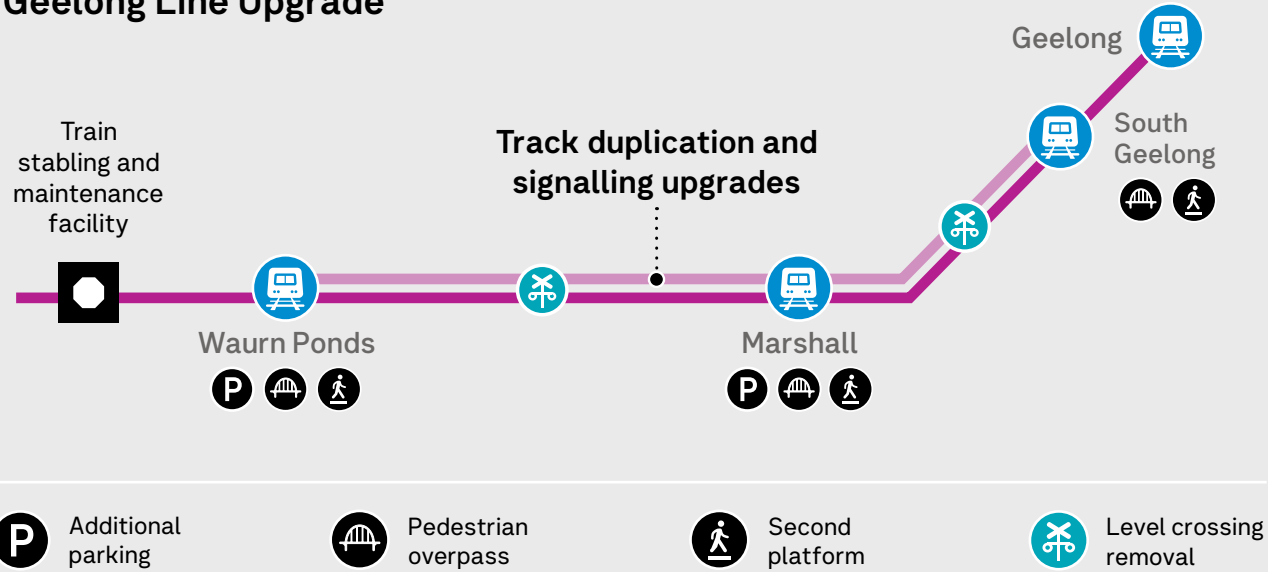


Scan the QR code or visit bigbuild.vic.gov.au/marsubscribe to subscribe to our updates as planning continues on the project, which is due to open in 2029



Melbourne Airport Rail (concept image)

Geelong Line Upgrade



Additional parking



Pedestrian overpass



Second platform



Level crossing removal

More trains more often on the Geelong Line

As part of the staged upgrades to the Geelong Line, we're doubling around eight kilometres of train track between South Geelong and Waurnd Ponds so you'll have access to more reliable trains more often.

Level crossings at Fyans Street and Surf Coast Highway will be removed, with trains running overhead on rail bridges so traffic can keep moving

These critical upgrades between South Geelong and Waurnd Ponds will enable five trains per hour in the morning and afternoon peak and three per hour between the peak at Marshall and Waurnd Ponds stations.

We're expecting to award the contract for these works mid-year, with construction due to start at the end of 2022. Completion of the works between South Geelong and Waurnd Ponds is targeted for late 2024.

Major work complete on Waurnd Ponds Station upgrade

We recently completed major works on the upgrade of Waurnd Ponds Station, with the transformed station entrance now open.

Passengers can enjoy the new forecourt, drop-off zone, bike storage and upgraded car parking spaces, providing more options to access the station.

The pedestrian overpass, ramps, stairs and lifts, as well as the second platform and track, will open after commissioning and safety testing later this year.



Find out more about the Geelong Line Upgrade by scanning the QR code or visiting bigbuild.vic.gov.au/geelongupgrade



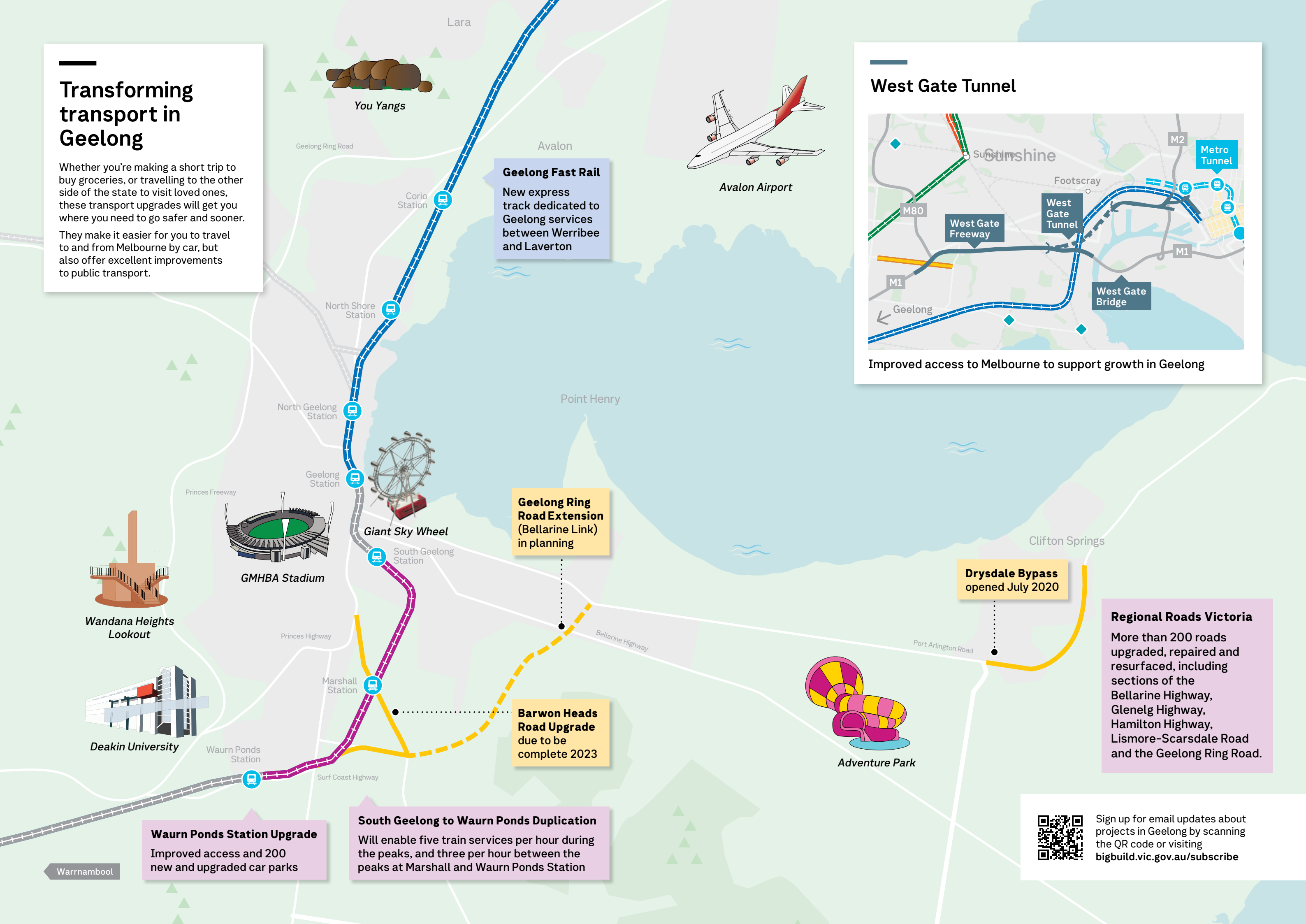
The new entrance to Waurnd Ponds Station



Major construction is complete on the upgrade of Waurnd Ponds Station

Transforming transport in Geelong

Whether you're making a short trip to buy groceries, or travelling to the other side of the state to visit loved ones, these transport upgrades will get you where you need to go safer and sooner. They make it easier for you to travel to and from Melbourne by car, but also offer excellent improvements to public transport.



Geelong Fast Rail
New express track dedicated to Geelong services between Werribee and Laverton

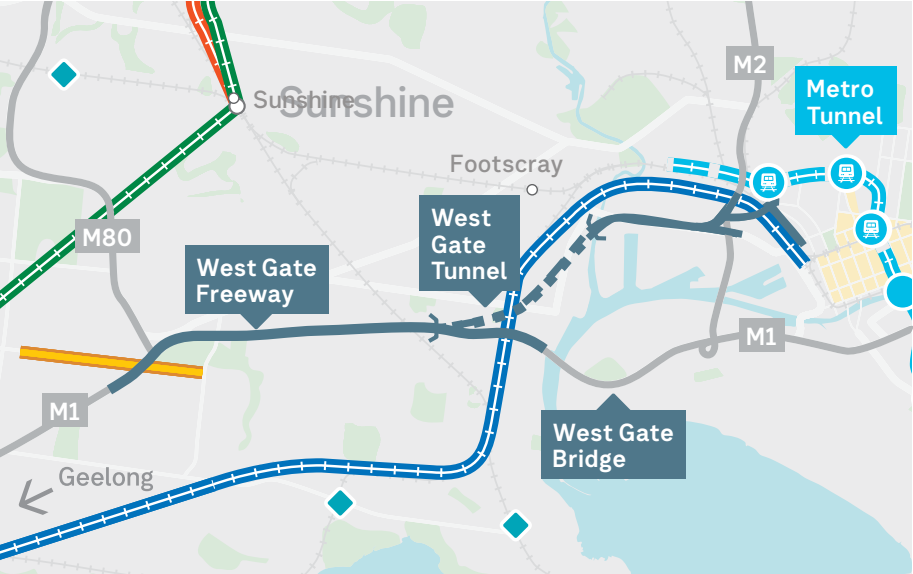
Geelong Ring Road Extension (Bellarine Link)
in planning

Barwon Heads Road Upgrade
due to be complete 2023

South Geelong to Warrnambool Duplication
Will enable five train services per hour during the peaks, and three per hour between the peaks at Marshall and Warrnambool Station

Warrnambool Station Upgrade
Improved access and 200 new and upgraded car parks

West Gate Tunnel



Improved access to Melbourne to support growth in Geelong

Drysdale Bypass
opened July 2020

Regional Roads Victoria
More than 200 roads upgraded, repaired and resurfaced, including sections of the Bellarine Highway, Glenelg Highway, Hamilton Highway, Lismore-Scarsdale Road and the Geelong Ring Road.



Sign up for email updates about projects in Geelong by scanning the QR code or visiting bigbuild.vic.gov.au/subscribe



We're making progress on the Barwon Heads Road Upgrade

Extra lanes on Barwon Heads Road

We're making steady progress on the Barwon Heads Road Upgrade, where we're adding lanes on a four-kilometre section between Settlement and Reserve roads to make your trips safer and more reliable.

We're also building a bridge over the rail line at Marshall Station to remove that level crossing and keep traffic flowing. It'll also help Geelong Line trains keep moving during the peak.

Crews have relocated underground services, installed barriers and new drainage, and temporarily widened the road so cars and trucks can pass our worksite.

Our focus over the next few months is to put in piles to support two new bridges we're building along Barwon Heads Road, with piling already complete for one of the bridges.

Walking and cycling paths, as well as on-road bike lanes, will improve safety and create better access to the Waurin Ponds Trail, the South Barwon Reserve, Belmont Common and the Barwon River Precinct.

The Barwon Heads Road Upgrade is due to be complete by late 2023



Building a bridge at Marshall Station to remove the level crossing



Adding lanes between Settlement and Reserve roads



Upgraded intersections at Settlement and Breakwater roads



To use our interactive map of Barwon Heads Road, scan the QR code or visit bigbuild.vic.gov.au/barwon

Planning continues for the Geelong Ring Road Extension (Bellarine Link)

We're planning for the Geelong Ring Road Extension, also known as Bellarine Link, to get you where you need to go safer and sooner.

Planning has identified the need to develop the extension in multiple stages and we're currently focusing on planning the section between Surf Coast Highway and Barwon Heads Road.

Our planning work involves traffic modelling, planning studies and environmental studies to understand potential impacts on the area, come up with design options and confirm costs.

Our business case is expected to be finalised this year



Faster and more frequent trips on Geelong Fast Rail

Geelong Fast Rail will not only give you a second option for travelling to and from the city by train, it'll get you there in around 50 minutes.

The new route between Werribee and Laverton will be around eight kilometres shorter than the current route through the western suburbs.

This will create a shorter and more direct path between Geelong and Melbourne and cut travel times.

Some Geelong trains will still travel through the existing route, providing access to the western suburbs, and an opportunity to change to Melbourne Airport trains at Sunshine once that project is complete.

Early works on the first stage of Geelong Fast Rail are expected to begin in 2023, subject to planning, environmental and other government approvals.



New express track dedicated to Geelong services between Werribee and Laverton



Upgraded bridges over main roads



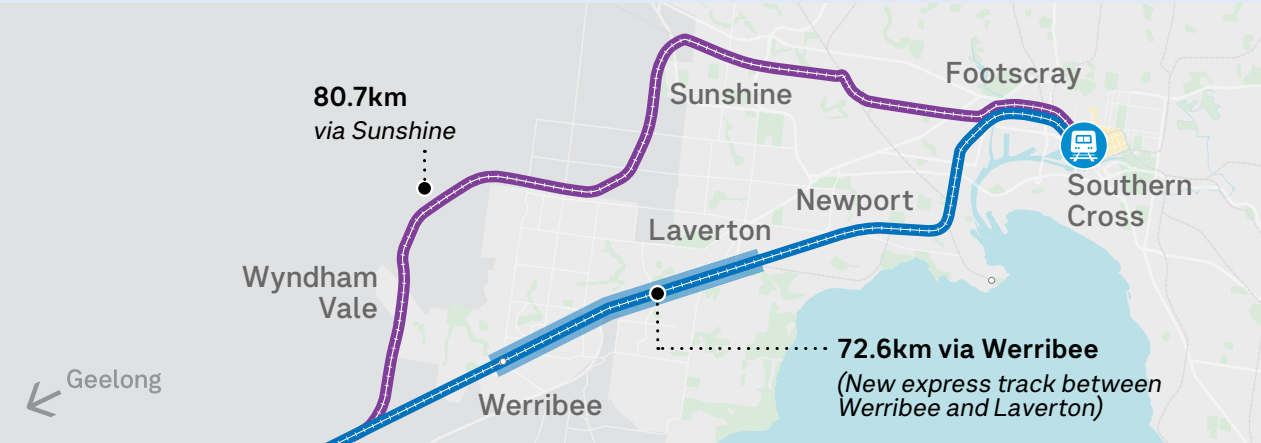
New bridges over creeks and rivers



Signalling and train control system upgrades



Station upgrades at Werribee and Laverton





Upcoming disruptions

We're working hard to build a better transport network. While we work, road and public transport disruptions could affect your travel.

West Gate Tunnel Project adds extra lanes to the freeway

We're continuing to shift lanes and drivers on different sections of the West Gate Freeway. These changes are needed to make the room we need to setup construction sites to rebuild existing lanes from the ground up, add new lanes and build the inbound tunnel entry. There will also be freeway lane and ramp closures at various times throughout autumn.

Barwon Heads Road Upgrade

There will be closures of Reserve Road and Tannery Road as works continue on the Barwon Heads Road Upgrade. We'll also close lanes and reduce speeds along Barwon Heads Road while we work.

Warrnambool Line Upgrade

Coaches will replace trains on the Geelong and Warrnambool lines from 30 April to 28 May. Work on the second platform and pedestrian overpass at Warrnambool Station will take place during this time.

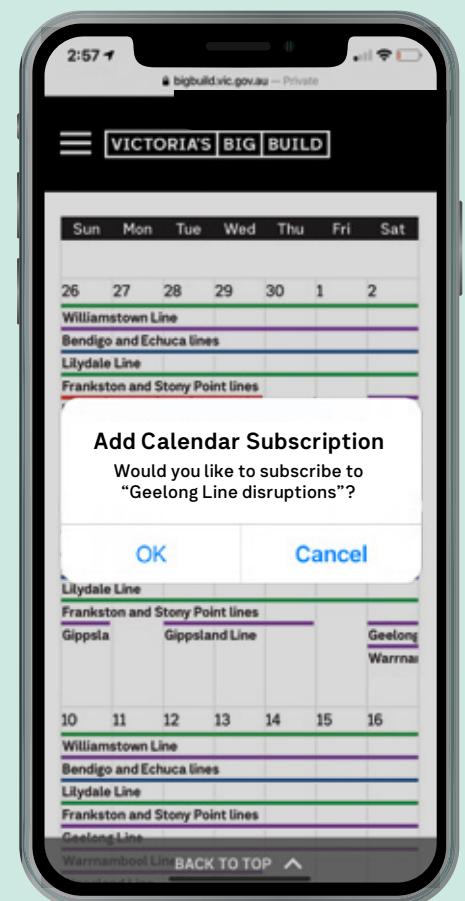


Find out more about disruptions in Geelong by scanning the QR code or visiting bigbuild.vic.gov.au/disruptions



Add disruptions directly to your calendar and you'll always be up to date

1. Visit bigbuild.vic.gov.au/calendar
2. Select your train line
3. Click Subscribe to calendar
4. Select your calendar type



Find out how we're building big in Geelong at bigbuild.vic.gov.au/vicsouthwest or call 1800 105 105 any time.

If you're deaf, or have a hearing or speech impairment, contact us through the National Relay Service – for more information, visit relayservice.gov.au



MIX
Paper from
responsible sources
FSC® C015144



For other languages call 9209 0147



@bigbuildvic



Victoria's Big Build

