

BUILDING THE RAIL TRENCH



Early artist impression of the new rail trench under Bedford Road – subject to change.

The Victorian Government is removing the dangerous level crossing at Bedford Road to improve safety and travel times on the Belgrave line.

We'll remove the crossing by lowering the rail line under the road in an open trench, similar to what we are building at Union Road, Surrey Hills and Mont Albert Road, Mont Albert, and many of our other level crossing removals across Melbourne.

Early works for the project will start in late 2022, with major works scheduled to begin in 2023 and boom gates gone by 2025.

Why this level crossing needs to go



More than 13,500 vehicles pass through the level crossing every day



Boom gates down for 23 minutes during the morning peak (7am to 9am)



15 trains run through the crossing during the morning peak (7am to 9am)



Dangerous boom gates cause congestion for school, local and passing-through traffic using this vital road connection



SIGN UP FOR PROJECT UPDATES
levelcrossings.vic.gov.au

How we build a rail trench

Phase One

Preparing the site

Early works will start in late 2022, with the relocation of underground facilities and services to make room for the trench.






Some of the other works include temporary changes to local roads, site establishment, including installation of fencing and hoarding around the perimeter so our crews can work safely, and drilling activity to assess ground conditions.

Phase Two

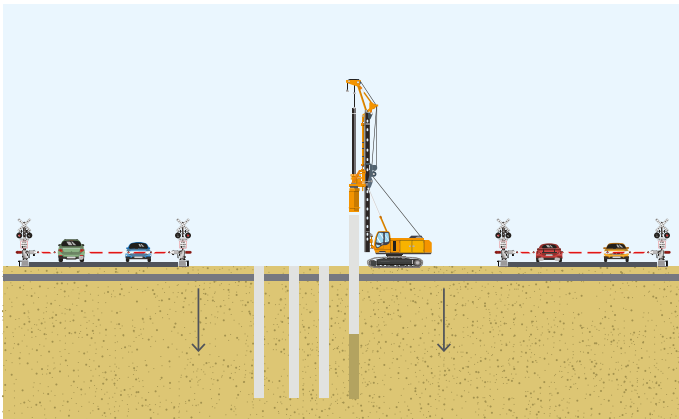
Major construction

From early 2023, you'll start to see more construction work in and around the rail corridor, with our piling rigs arriving on site.

Activities in this phase include:

-  temporary changes to local roads depending on where we work
-  utility relocations and upgrades in local streets around the rail line
-  major water main works
-  installing large concrete columns, known as piles, that will form the walls of the new rail trench
-  installing critical new rail infrastructure like power, signalling and communications cables underground.

Installing the piles will take several months, with piling rigs used to install hundreds of reinforced concrete piles deep into the ground to build the rail trench.



Major works will include moving underground services and drilling into the ground to build the supports for the edges of the new rail trench.

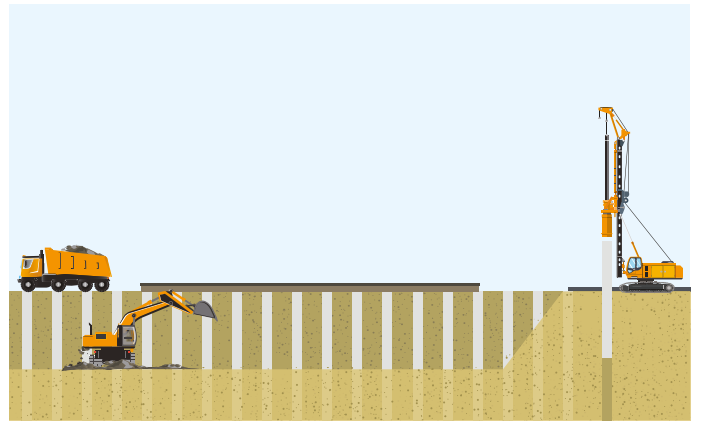
Phase Three

Removing the level crossing

We'll start a major construction blitz where hundreds of workers will work around the clock to dig the trench and remove the boom gates at Bedford Road. We'll need to shut the rail line for one extended closure to prevent rolling disruptions and ensure the job is done safely and as quickly as possible.

During this time, we'll also need to temporarily close Bedford Road so we can build the new road over the rail trench. The majority of works will be completed in this phase. We'll also lay the new tracks and remove the boom gates.

As part of the construction blitz, we will use excavators to dig the trench and remove the boom gates.



Diagrams not to scale, for illustrative purposes only.

Phase Four

Finishing works

We'll add the finishing touches to the project to reinstate local roads and plant new trees and vegetation in and around Bedford Road.

By 2025, trains will be running in the new rail trench and cars will be driving safely over it.

Locals can look forward to spending less time stuck at boom gates, and having safer and easier access to public transport, local shops and other services.

CONTACT US

contact@levelcrossings.vic.gov.au

1800 105 105

Level Crossing Removal Project
GPO Box 2392, Melbourne VIC 3001

Follow us on social media
[@levelcrossings](#)



Translation service – For languages other than English, please call 9209 0147.

Please contact us if you would like this information in an accessible format.

If you need assistance because of a hearing or speech impairment, please visit relayservice.gov.au