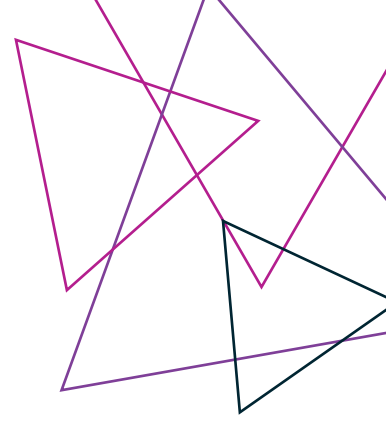




**REGIONAL
RAIL REVIVAL**

GEELONG



South Geelong to Waurin Ponds Duplication

Building the Fyans Street rail bridge

The South Geelong to Waurin Ponds Duplication project will deliver more frequent and reliable services and better stations for passengers on Victoria's busiest regional rail line.

We are removing the congested and dangerous level crossing at Fyans Street and replacing it with a new elevated rail bridge which will improve traffic flow and boost safety for road users.

As with any project of this scale, temporary construction impacts and disruptions will occur. We aim to minimise impacts to passengers,

residents and businesses wherever possible and will notify well in advance of works occurring.

We will undertake a staged approach to constructing the project, so that we can carry out works safely and minimise disruption as much as possible.



New Fyans Street rail bridge concept image - view from Carr Street



Australian Government



Building the Fyans Street rail bridge

1

Relocation of services

First we will relocate underground and overhead services such as gas, water and electricity on both sides of the rail line. Some vegetation removal will also be required.

2

Strengthening the ground

16 concrete piles will be installed in the ground to support the concrete piers. A piling rig will bore holes in the ground. A steel cage is then lowered into the holes and filled with concrete.

3

Installing concrete piers

Once piling works are complete, eight pre-cast concrete piers will be installed, with four crossheads to support the rail bridge.

4

Installing concrete beams and steel girder

The piers will be connected by concrete beams and a 48 metre-long steel girder will be installed across the new Fyans Street road layout. The bridge has been designed to avoid piers between lanes, to improve driver safety.

5

Laying the rail track

Ballast and sleepers will be installed on the new bridge, and rail laid on top. The top ballast is added before tamping and regulating of the new rail and ballast is completed.

6

Creating the finishing touches

Landscaping, creative treatments and the installation of public artworks and recreation equipment under and around the bridge will take place once the rail track has been laid.

7

Commissioning

Commissioning of the new duplicated track is required to integrate the new infrastructure into the operating rail network to enable additional services to run on the line.

8

Fyans St level crossing removed and the elevated rail bridge completed late 2024



Keep informed

We will work closely with residents living near our work sites, to ensure people receive regular information and know who to call if they want to talk to someone.

Our 1800 number operates 24 hours a day. To receive updates about the South Geelong to Warrnambool Duplication sign up to our eNews at regionalrailrevival.vic.gov.au/geelong or follow us on Facebook facebook.com/RRRGeelongWarrnambool

Upgrading the Geelong Line

The Victorian and Australian governments are investing more than a billion dollars in projects to deliver better and more frequent services for communities between South Geelong and Warrnambool. This includes the South Geelong to Warrnambool Duplication, Warrnambool stabling and the completed Warrnambool Station upgrade.


The South Geelong to Warrnambool Duplication project will enable more frequent and reliable services and better stations for passengers on Victoria's busiest regional rail line.

The project is part of the Regional Rail Revival program which is upgrading every regional passenger line in Victoria and creating 3,000 jobs. Rail Projects Victoria is delivering the program on behalf of the Australian and Victorian governments.

Both governments have also invested in Geelong Fast Rail, to deliver faster services between Geelong and Melbourne.

More information

 regionalrailrevival.vic.gov.au

 1800 105 105
(24 hours a day, 7 days a week)

Rail Projects Victoria
PO Box 2392, Melbourne, VIC 3001



Interpreter Service (03) 9209 0147

It should be noted that this information is current at the time of printing, however due to unforeseen circumstances, changes may occur. Please visit regionalrailrevival.vic.gov.au for the latest updates.