



LEVEL CROSSING REMOVAL PROJECT

A glimpse down the rail corridor during recent works at Glen Huntly

LEVEL CROSSINGS PROJECT UPDATE

NEERIM ROAD AND GLEN HUNTLY ROAD, GLEN HUNTLY

ISSUE #7 – AUGUST 2022

Boots on the ground at Glen Huntly

The Victorian Government is investing more than \$4 billion on the Frankston Line to remove 20 dangerous and congested level crossings, build 13 new stations and increase safety, reduce congestion, and run more trains, more often.

Works are progressing well in Glen Huntly, and there is a lot happening on the ground as crews continue to deliver piling, utilities and relocate drainage along the rail corridor.

We will be carrying out critical works on Neerim Road and Glen Huntly Road and in the rail corridor from 9pm Tuesday 23 August to 4am Saturday 27 August, with construction happening 24 hours a day during this time.

These essential works will help us to continue with piling and the relocation of

utilities, install safety fencing and prepare to dig the rail trench.

During works there will be rail and road disruptions to ensure construction can take place safely while trains aren't running. The works will allow us to continue preparations for the 'big dig' in 2023, as well as re-opening platform 3 at Glenhuntly Station to allow express trains to run on the Frankston Line.

Find out more about upcoming works on the next page.

Why these level crossings need to go

- 20,000 vehicles travel through these crossings each weekday
- 200 passenger trains use the Frankston line daily
- Boom gates down for almost 60 minutes during morning and afternoon peak
- 3000 people use Glenhuntly Station each day



SIGN UP FOR PROJECT UPDATES
levelcrossings.vic.gov.au



GETTING READY FOR THE 'BIG DIG'



Our team out on site in Glen Huntly

Last month we successfully completed 24/7 works on Neerim Road and Glen Huntly Road.

Construction is full steam ahead in Glen Huntly. Over winter, our crews have been busy preparing the project area so we're ready to start major works next year.

- installed a 51 tonne, 20 metre, Melbourne-made concrete beam form part of the new Neerim Road connection above the lowered rail line.

Underground utilities and services in the area, such as water and drainage continue to be relocated, ensuring they are safely out of the way before we start digging.

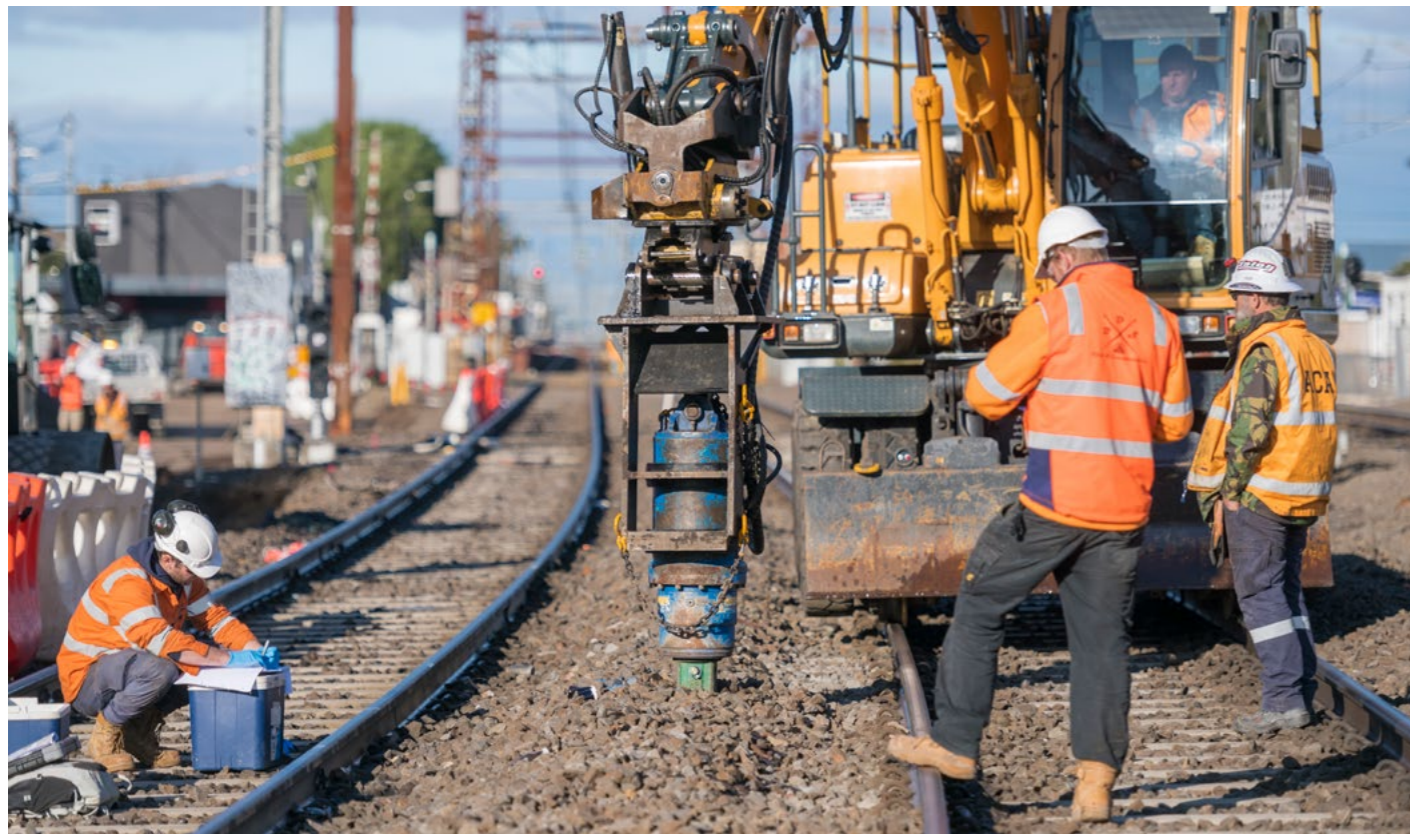
During the latest 24/7 works in July we:

- carried out critical works 24 hours a day along the rail corridor in Glen Huntly and Caulfield East
- temporarily relocated 15 Canary Island Date Palms to a specialist nursery so crews can get to work along Royal Avenue

We will soon welcome two more piling rigs on site, bringing us up to a total of four. These extra rigs will fast-track building the trench walls in preparation for the 'big dig' to excavate the rail trench and remove the level crossings next year. Piling works will continue throughout 2022.

Glenhuntly Station will remain open as long as possible to keep train passengers moving and to maintain pedestrian access across the tracks. You may notice works taking place on and around platform 3, as we prepare for the next stage of piling in this area.

A hi-rail excavator sampling soil in the rail corridor at Glen Huntly



Upcoming disruptions

Where possible, we schedule our works to keep disruptions to a minimum.

Night works

Night works will be required from time to time, including 24-hour rail and road disruptions. These are needed to safely complete critical works while trains aren't running.

Out of hours works

To get as much work done as we can ahead of the 'big dig' in 2023, we'll extend our work hours for the remainder of 2022.

Our standard construction hours will be 7am to 6pm Monday to Friday and on weekends, Saturdays and Sundays, 7am to 6pm until December 2022.

Rail

Later this month crews will work along the rail corridor from **9pm Tuesday 23 August to 4am Saturday 27 August** in both Glen Huntly and Caulfield East.

During this time buses will replace trains between Caulfield and Moorabbin from **8:30pm Wednesday 24 August to 4am Saturday 27 August 2022**.

Trams will continue to operate as normal along Glen Huntly Road.

Express trains on the Frankston Line will be replaced with trains stopping all stations **until late August 2022**.

To plan your journey, visit ptv.vic.gov.au/frankstondisruptions or call **1800 800 007**. Please allow extra time and plan ahead.

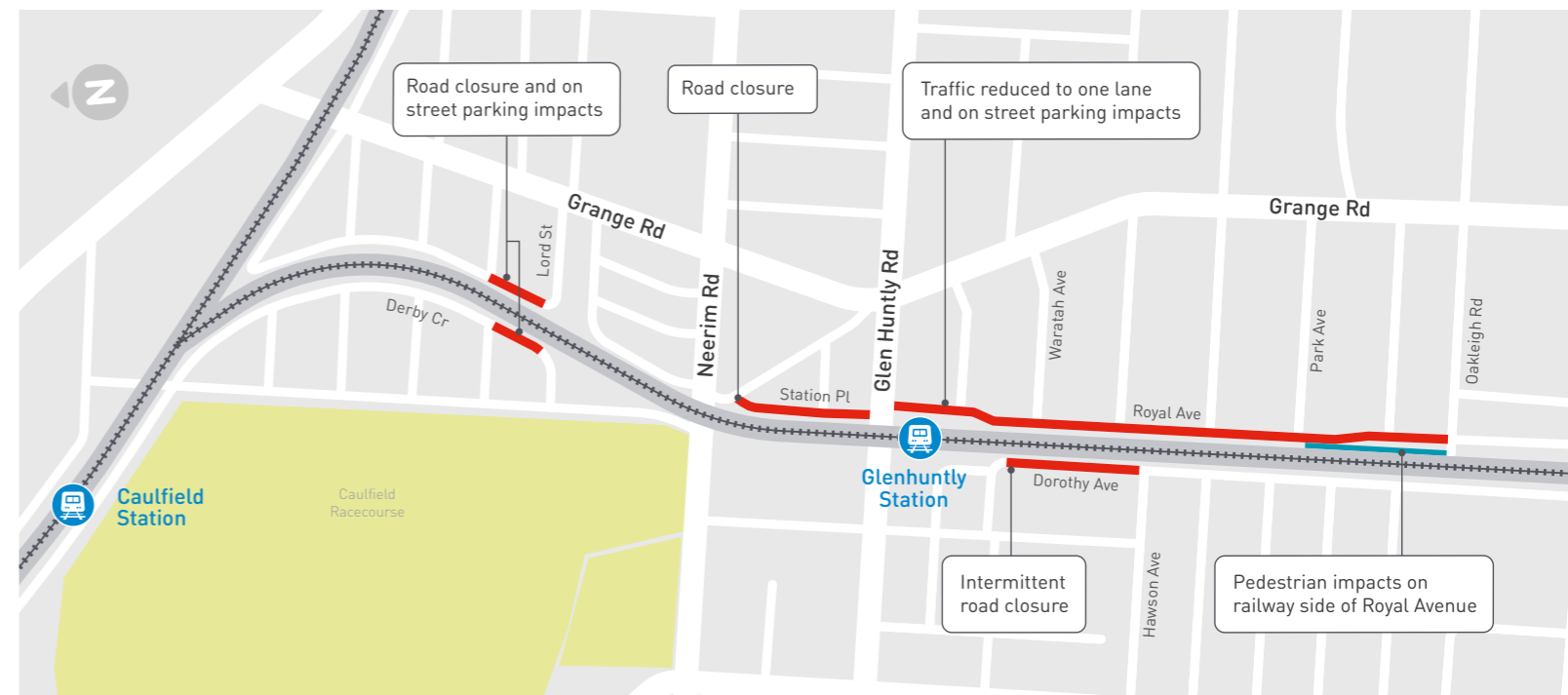
Road

As works continue, you can expect road, lane and footpath closures.

For more information on changes in your local area, **scan the QR code** or visit bigbuild.vic.gov.au/projects/level-crossing-removal-project/projects/glen-huntly-road-glen-huntly



Changes to the way you travel





YOUR CANARY ISLAND DATE PALMS ON HOLIDAY!

? Did you know?

These Canary Island Date Palms are thought to be between 80 to 100 years old.



Our specialist team carefully removing the Canary Island Date Palms for temporary relocation

The palms along Royal Avenue have been temporarily relocated during our works. 15 of the Canary Island date palms that usually line Royal Avenue at Glen Huntly are off on holiday as works continue building a solid foundation for the trench.

Because palm trees respond well to being transplanted, the Level Crossing Removal Project has already successfully removed and reinstated more than 50 palm trees along the Frankston Line at Ormond, McKinnon, Bentleigh, Cheltenham and Carrum over the past five years.

The palm trees at Glen Huntly are being removed by digging around the palm and using a trencher to separate their root ball from the earth. The root ball is then wrapped up in hessian and plastic to protect it from damage before the palm is craned onto the back of a truck.

The palms have been driven to a specialist nursery where they will be temporarily planted and cared for, before being returned once major works are completed in 2024.

To learn more about the Canary Island Date Palms in Glen Huntly, scan the QR code or visit bigbuild.vic.gov.au/news/level-crossing-removal-project/glen-huntlys-grand-palms-take-a-break-during-our-works



TAKING IT CHEESY IN GLEN HUNTLY



Anabella Pizza has been a local favourite for over 20 years.

Meet Tom Harb, the owner of **Anabella Pizza** on Glen Huntly Road.

Even as a child, Tom always loved pizza and loved working with food. He recalls his curiosity for cooking began with helping his mother knead dough for pizza bases, experimenting with ingredients and ultimately being thrown out of the kitchen for making a whole lot of mess.

From his childhood love of food to his love of the Glen Huntly area, Tom made it his passion to create the area's go-to for pizza, pasta, risottos, and salads, all made using fresh local ingredients.

Tom and his wife Sireen have four boys aged between 10 and 28, who all help with running this family owned and operated business.

The Harb family loves the area, proudly serving locals from Caulfield to Murrumbeena.

'The people are nice and friendly. I have customers whose parents came before their kids got married, and I've watched them grow up from pregnancy through to their teens. It's home.'

Anabella Pizza is located in the heart of level crossing removal works in Glen Huntly and have been one of our team's favourite local restaurants to visit when taking a break.

The future looks less congested for Tom and his family, who are eagerly awaiting a boom gate-free Glen Huntly Road to make their lives easier.

'From 5pm onwards the 'booms' are a nightmare for deliveries, sometimes we just have to sit and wait for the rush to be over. With the level crossing gone it will make everyone's journey a lot easier.'

Neerim Road and Glen Huntly Road will officially be free of boom gates by 2023, a whole year ahead of schedule.

You can visit **Anabella Pizza at 1141 Glen Huntly Road, Glen Huntly.**

Glen Huntly's on notice

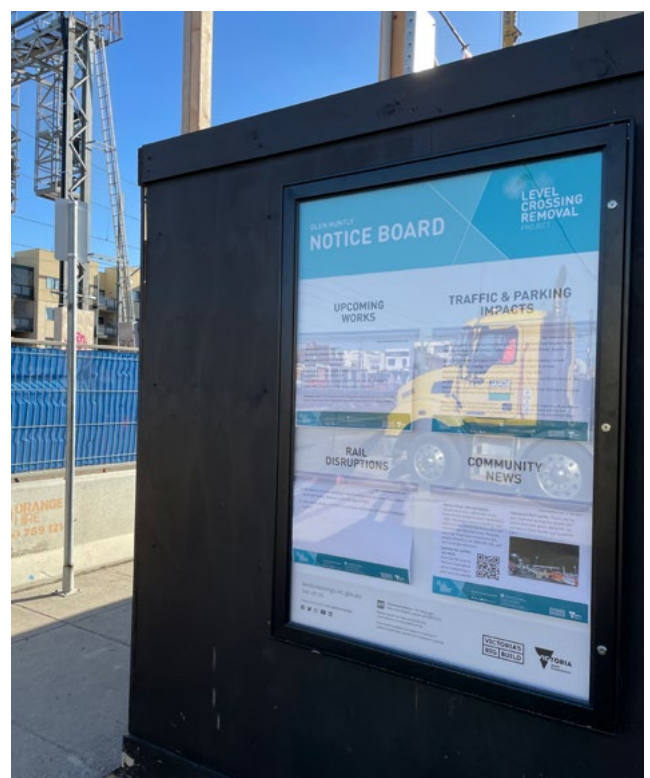
Glen Huntly's community noticeboard is officially live on the corner of Station Place and Huntly Street. Come down and check it out.

Community representatives on our Stakeholder Liaison Group (SLG) said locals would like to see the latest information on works happening in Glen Huntly. A community noticeboard was installed in response to this feedback.

Updated on a weekly basis, the noticeboard captures up-to-date information of what's taking place. It highlights upcoming works, road and traffic impacts, rail disruptions, and community news.

It's also an opportunity for us to let you know about other work happening in the area that may not be part of the level crossing removal project.

Given the great success of our first noticeboard, keep an eye out for more popping up in the project area over the coming months.





Take a walk on the Glen Huntly side

Thank you for joining us on our guided walking tours.

Last month we held a series of behind-the-scenes guided walking tours for the local community to showcase what's happening on the project.

People had the opportunity to learn more about works taking place, what to expect and how to keep moving safely around the area. Led by project staff, these 45-minute behind-the-scenes walking tours allowed you to find out more about the project and ask any burning questions.

Our project team answered questions about how we'll remove the level crossings, build the new Glenhuntly Station, and what to expect during construction.

The first of many to come, these guided information tours will take place regularly across the project's lifespan.

For more project information, and to stay up to date for when we'll release more walking tours visit our website bigbuild.vic.gov.au/projects/level-crossing-removal-project/projects/glen-huntly-road-glen-huntly



Project timeline

- ✔ **Late 2021**
 - Finalise project design
 - Ongoing site investigations
- ✔ **Early to mid 2022**
 - Site office establishment
 - Vegetation removal
 - Service and utility works continue
 - Station car park closures
 - Piling works begin
- **Mid to late 2022**
 - Major construction begins
- **2023**
 - Boom gates removed
- **2024**
 - Project completed

Timeline above is subject to change

i Stay informed

- Sign up for email updates at bigbuild.vic.gov.au/projects/level-crossing-removal-project/subscribe or by **scanning the QR code**
- To sign up for SMS alerts, text **GH** to **0429 839 892** to keep informed of major traffic and construction impacts
- Call us on **1800 105 105** or email contact@levelcrossings.vic.gov.au 24 hours a day
- Send us a private message on the Level Crossings Removal Project Facebook page



CONTACT US

contact@levelcrossings.vic.gov.au
 1800 105 105
 Level Crossing Removal Project
 GPO Box 2392, Melbourne VIC 3001

Follow us on social media
[@levelcrossings](https://www.facebook.com/levelcrossings)



Translation service – For languages other than English, please call 9209 0147.

Please contact us if you would like this information in an accessible format.

If you need assistance because of a hearing or speech impairment, please visit relayservice.gov.au