



STATE LIBRARY STATION COMMUNITY REFERENCE GROUP

CROSS YARRA PARTNERSHIP D&C

Kate Walshe, Communications and Stakeholder Engagement Director, CYP D&C
Sarah Robins, Creative Engagement Manager, Cross Yarra Partnership

17 October 2022



Agenda



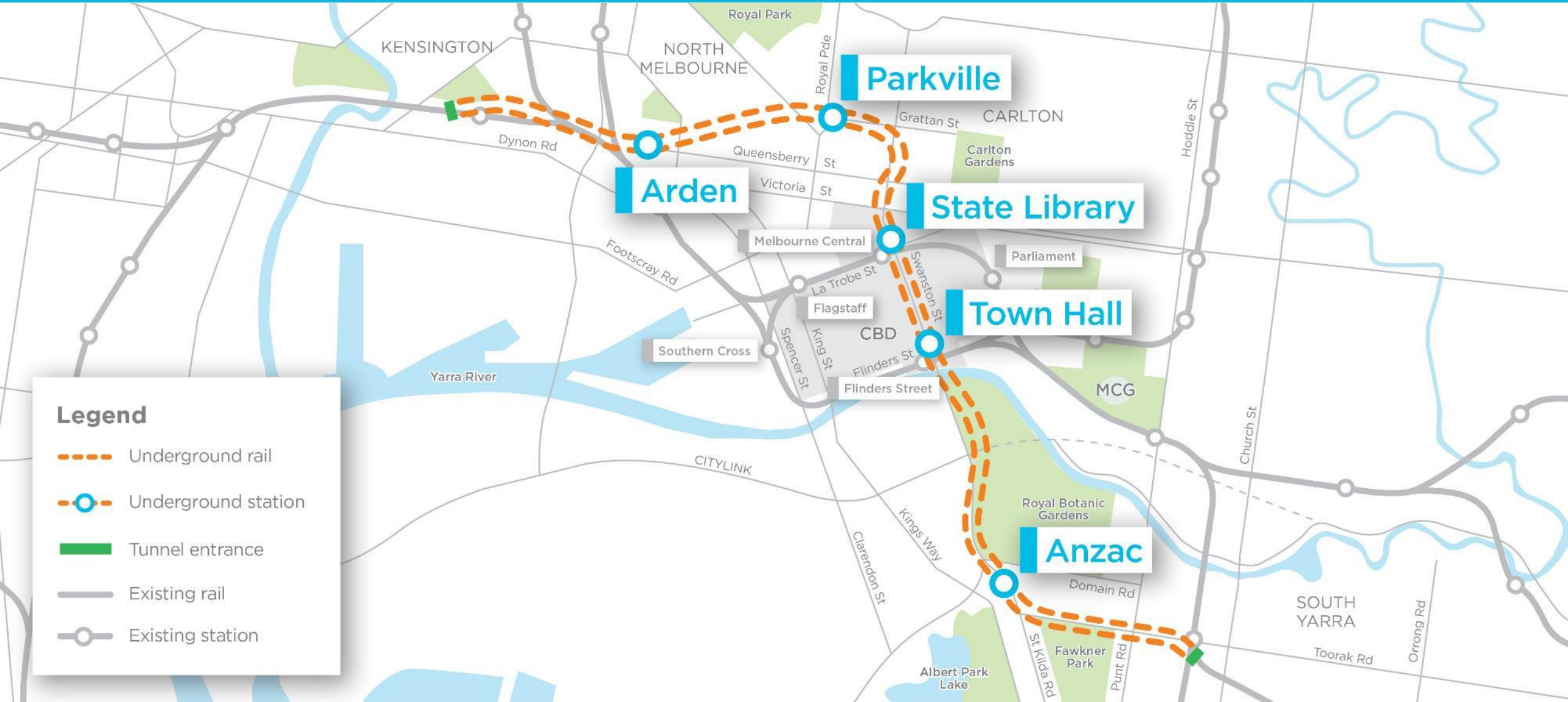
1. Precinct Updates
2. State Library Station Update
3. Creative Program update



Precinct Updates

Metro Tunnel Project

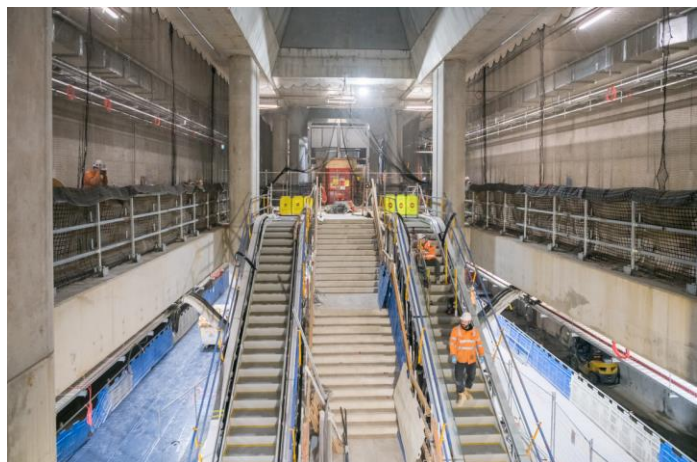
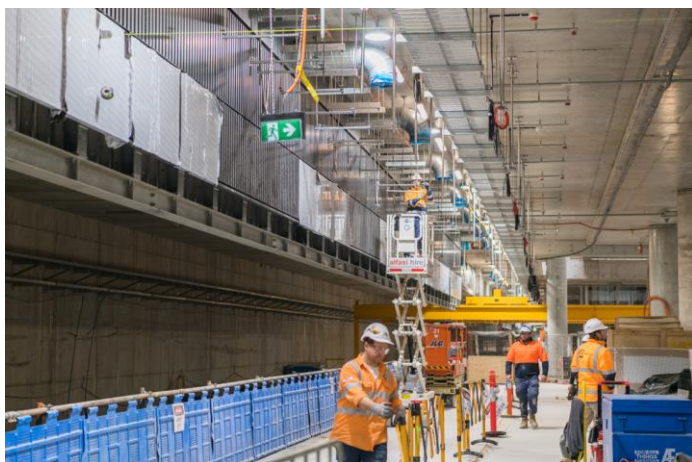
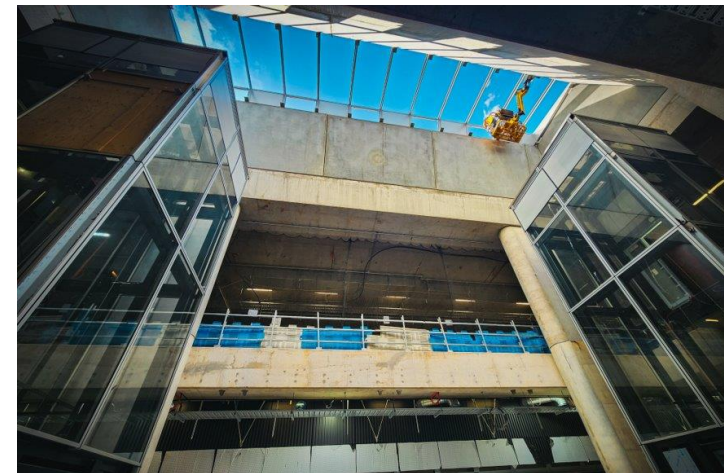
Project Alignment



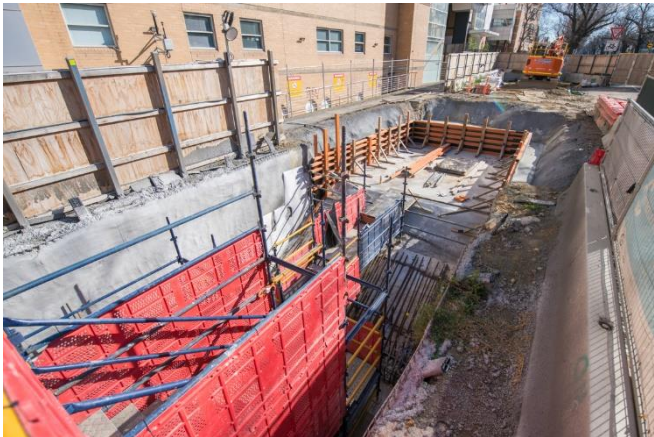
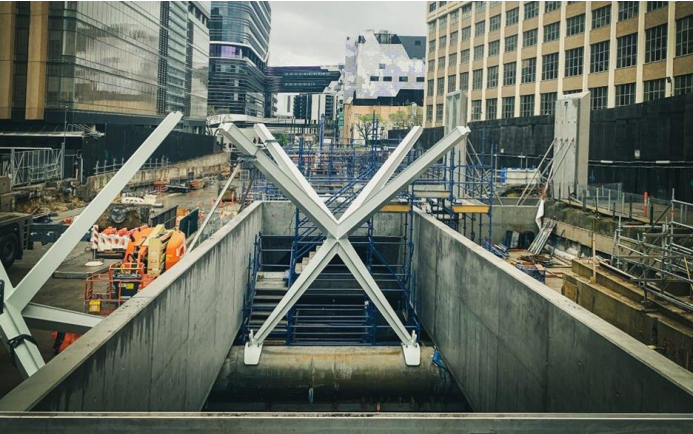
Legend

- Underground rail
- Underground station
- █ Tunnel entrance
- Existing rail
- Existing station

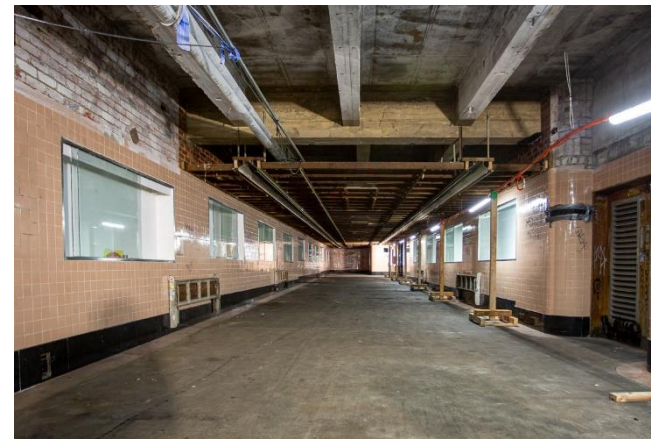
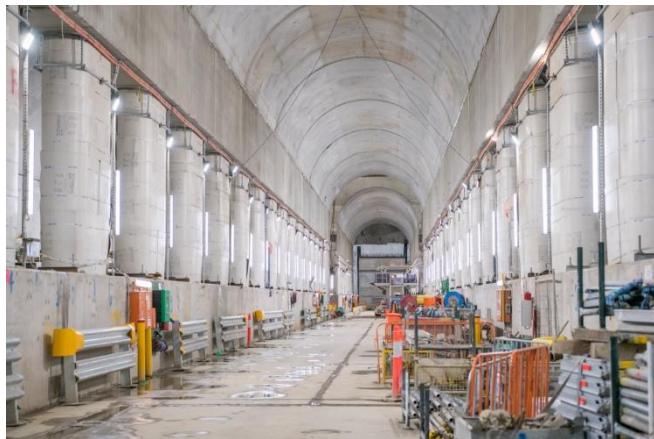
Arden



Parkville



Town Hall



Domain – Anzac Station



Rail and Tunnel Fitout





State Library Station Update

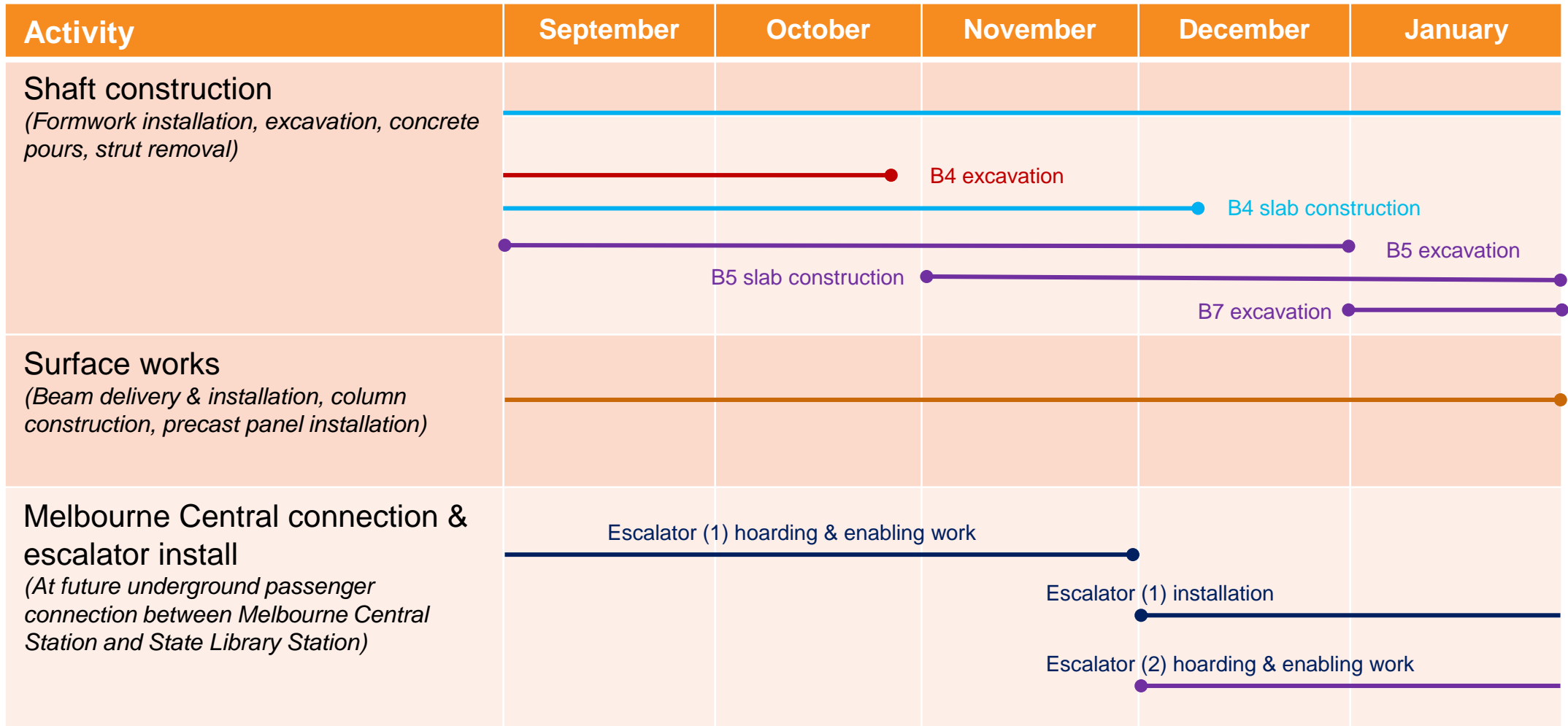
LA TROBE STREET SITE



LA TROBE STREET SITE



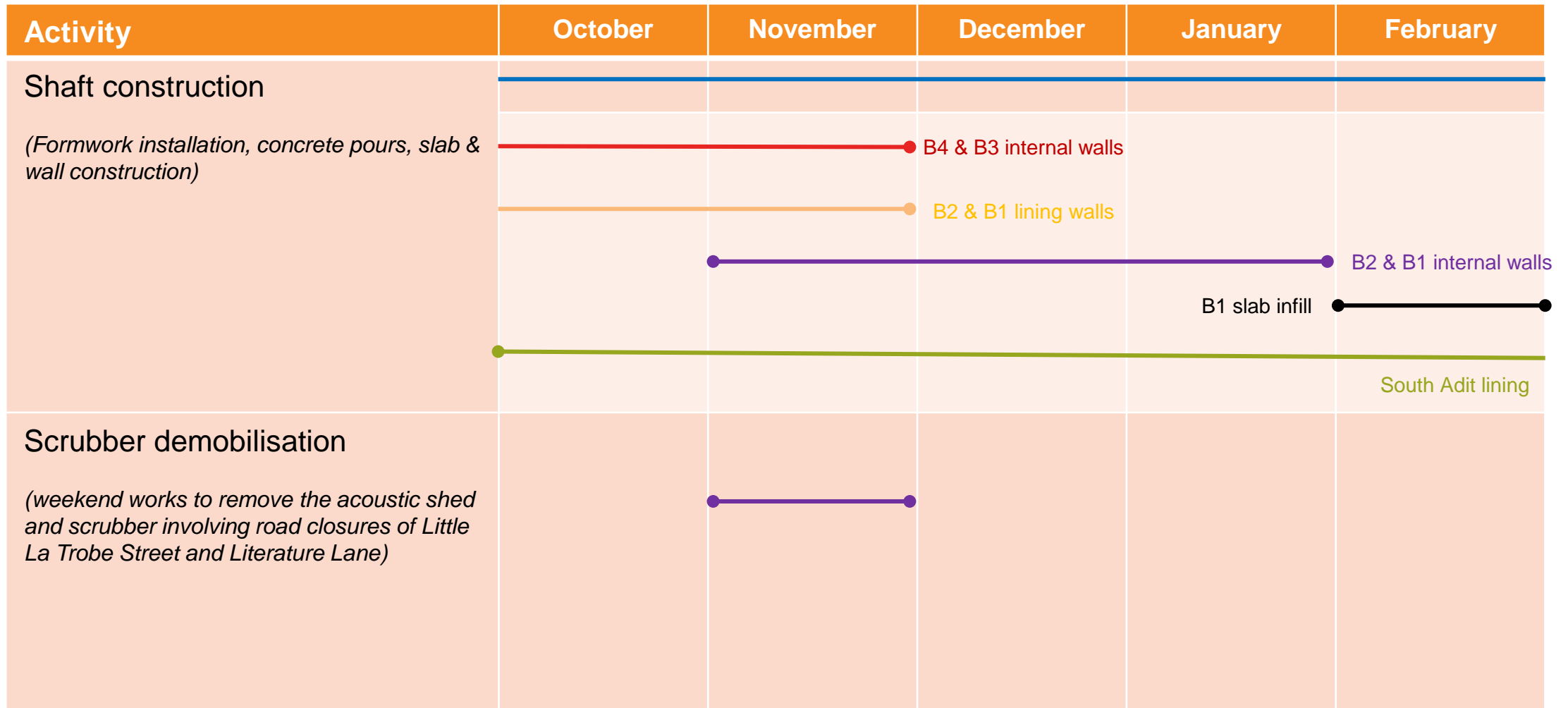
LA TROBE STREET SITE



LITTLE LA TROBE STREET SITE



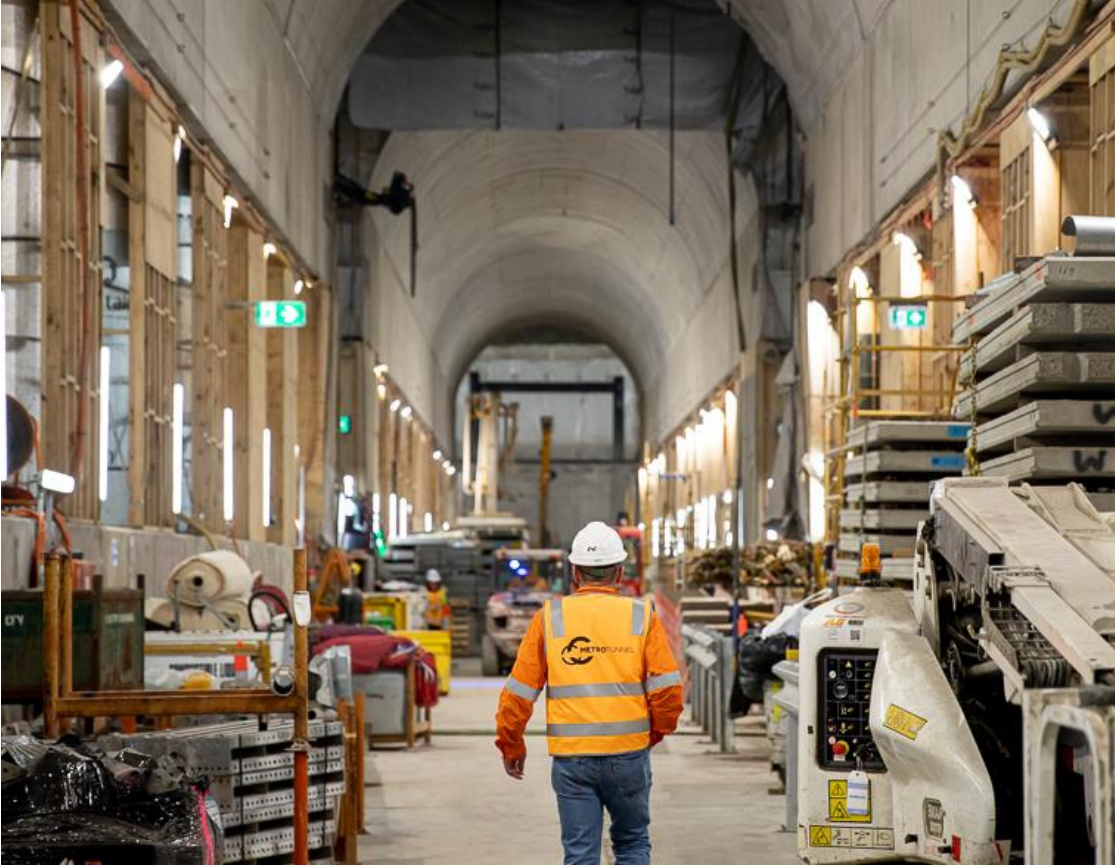
LITTLE LA TROBE STREET SITE



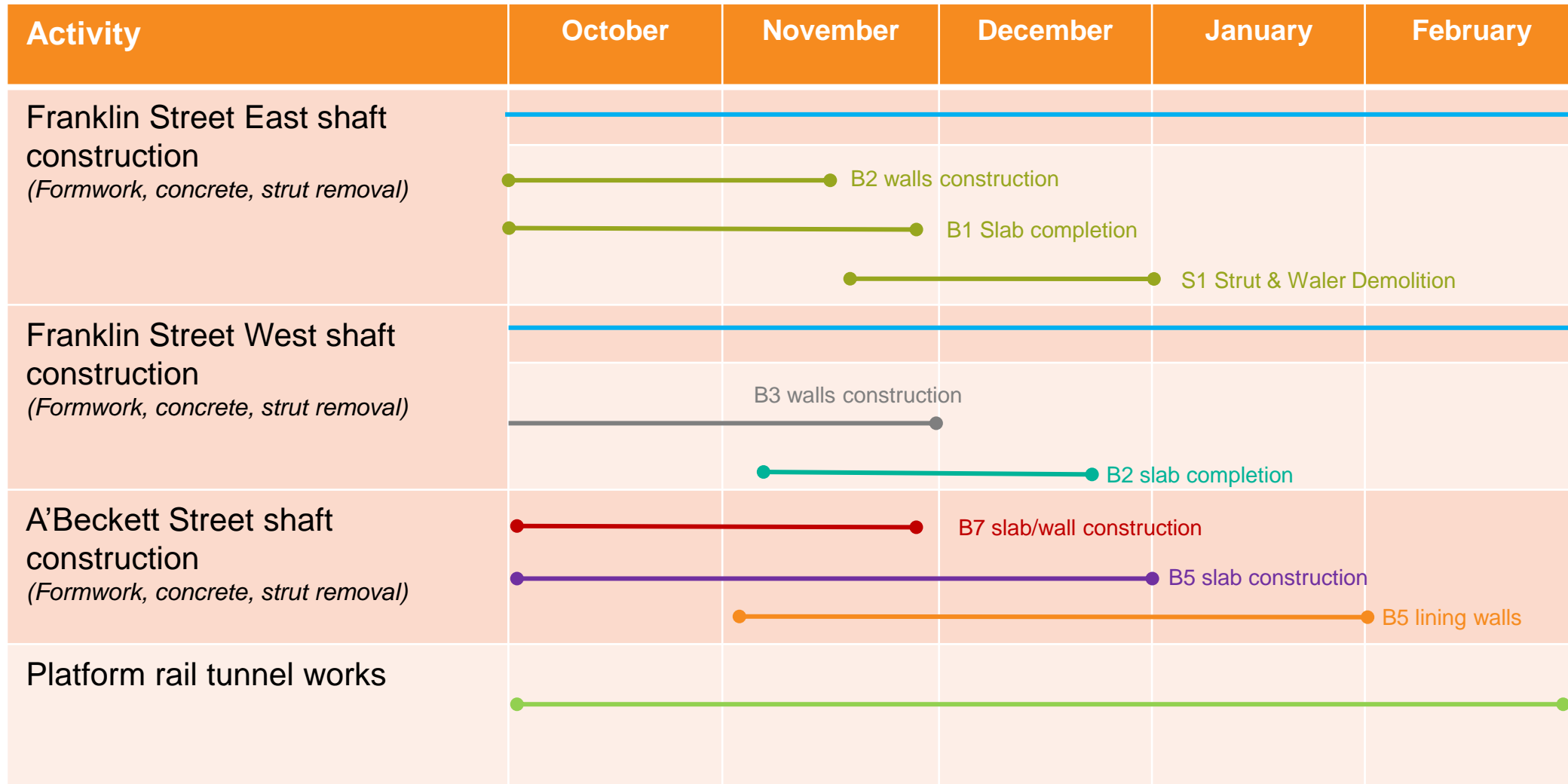
FRANKLIN AND A'BECKETT STREET SITES



FRANKLIN AND A'BECKETT STREET SITES



FRANKLIN AND A'BECKETT STREET SITES



Questions



Creative Program

October 2022



Construction partner:





Recent installations and activations

Unearthed studio photos, Henry Trumble

1-31 October, Franklin St frames and Craft Victoria





Upcoming projects

State Library Collection images

Install late October, Franklin Street frames



Argus newspaper collection of war photographs (1942-1943),
Women in postal and traffic services, Australia, World War II



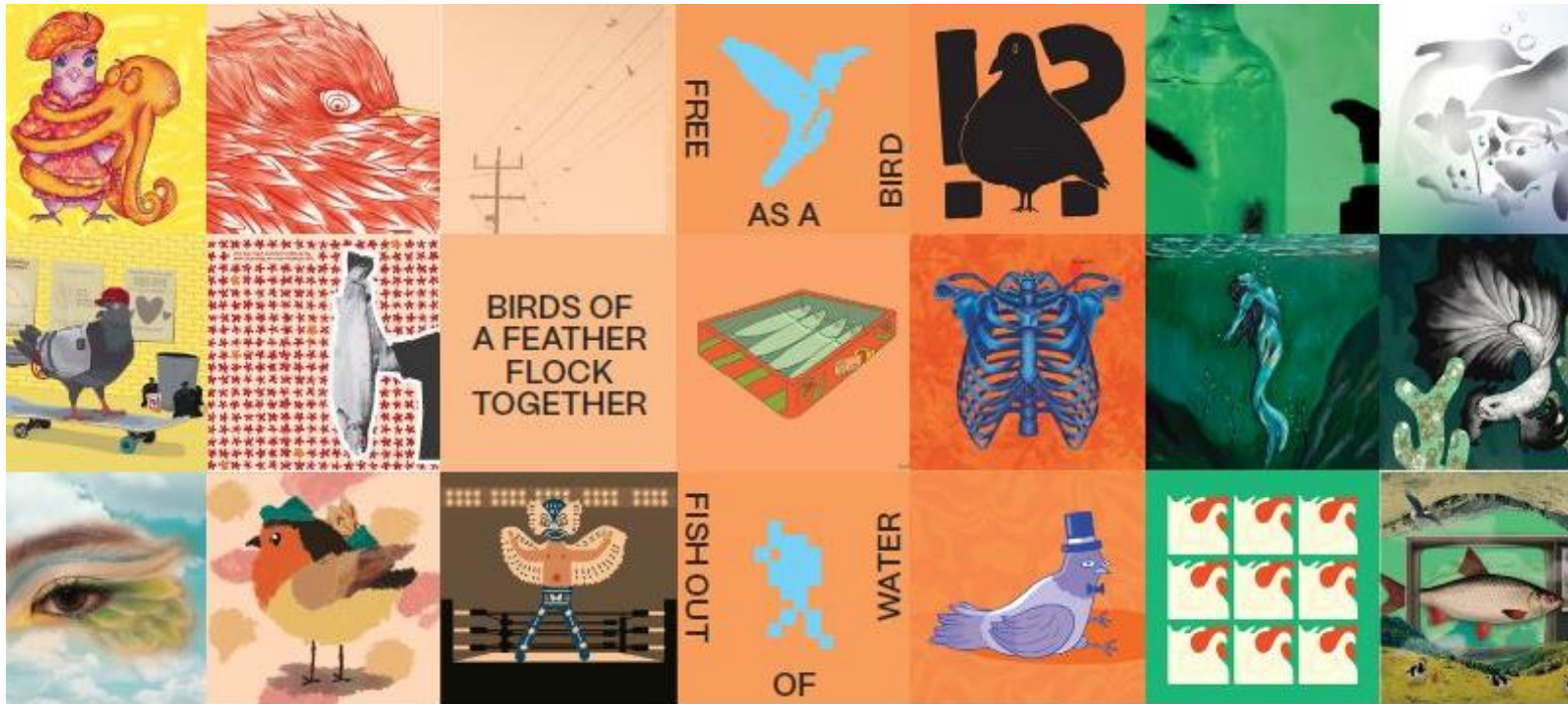
Victoria, State Rivers and Water Supply Commission photographer (1900-1940),
Railways



Henty, Wiff, photographer (1901-1940),
Railway construction workers laying track through cutting in bush

Flock Off, School's Out: RMIT Communication Design Students

Franklin St shed; install in late November/ early December



RMIT Communication Design Students have produced work on the theme of fish and birds, showcasing their wide array of skills and styles. This artwork will be installed on the Franklin St shed and is timed with the end of the students' coursework, before the students break for the year and return to international and Australian homes.

Questions