

Works Notification

Out of hours works Kensington

Saturday 11 February and Sunday 12 February 2023

As previously notified, there will be 24-hour works within the rail corridor from North Melbourne Station to Sunshine and Newport stations in February. As part of these works there will be out of hours works within the new South Kensington Station forecourt area while trains are not running.

What we are doing

- Out of hours works are required to support the construction of the new South Kensington Station forecourt during a scheduled shutdown of the Sunbury, Williamstown and Werribee lines
- Installing scaffolding outside South Kensington Station to enable the safe installation of the new station entrance canopy
- Other activities include realigning Childers Street, constructing and landscaping garden beds, including raised pedestrian crossing, paving, seatings, decking and 25 bike storage hoops
- Works will require the use of a crane, an elevated work platform (EWP), an excavator and crews with hand tools.

When

24-hour rail works

- Between 5pm Wednesday 8 February and 5am Monday 13 February 2023.

Out of hours forecourt works

- Between 7am and 7pm
- Saturday 11 February and Sunday 12 February 2023.

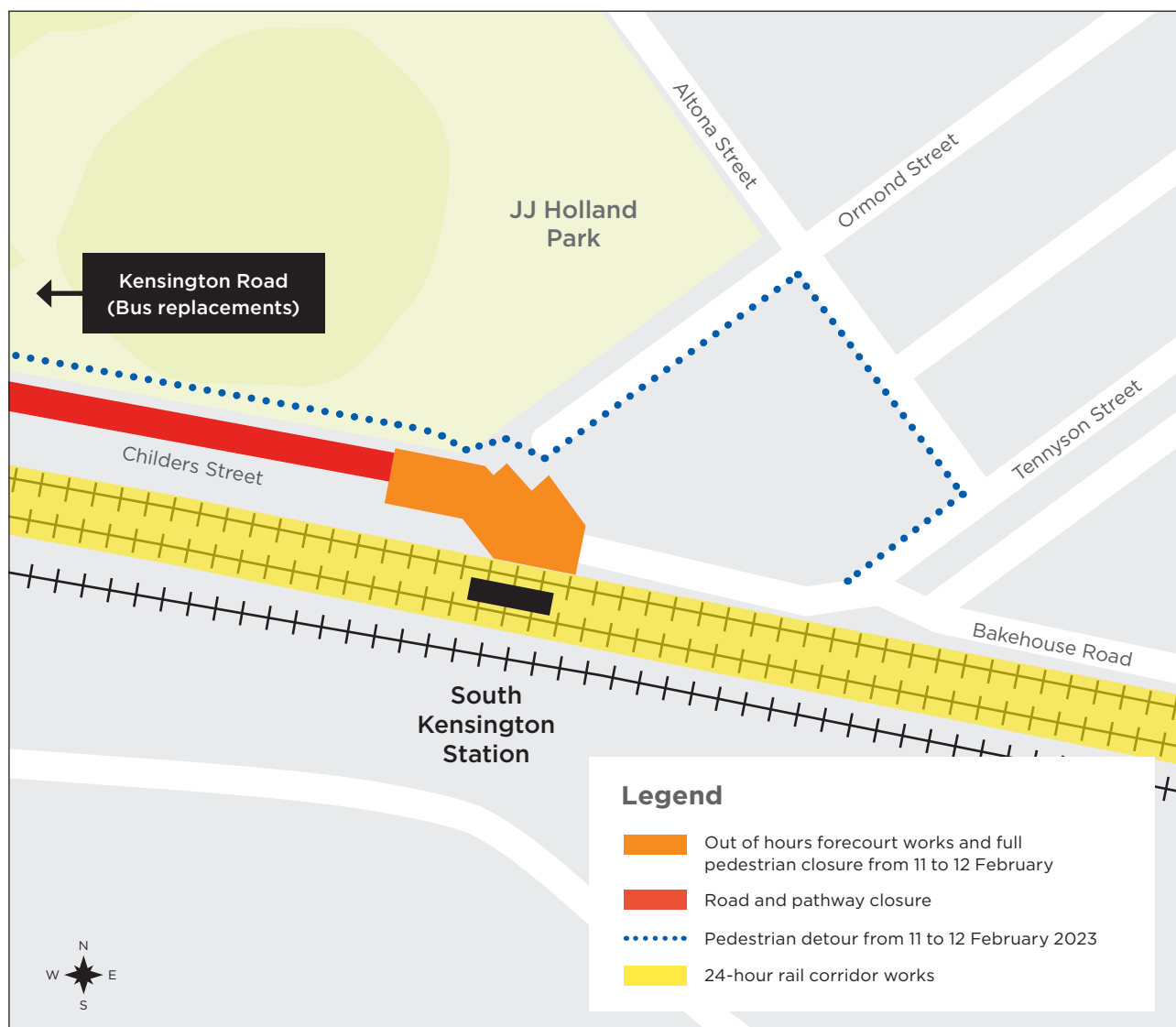
What you should be aware of

- To ensure the safety of passengers and pedestrians, these works will need to take place when the South Kensington Station is not in operation
- To support scaffold installation works, Childers Street will close to pedestrians outside the station at various times while train services are not running. Pedestrian access will remain in place during train service hours
- These activities are expected to generate medium levels of noise. There will be an increase in deliveries and construction vehicles accessing the site via Childers Street
- Temporary light towers may be required during this time. Where possible, they will be positioned to face away from residential properties
- For a full list of key elements of the final urban design please visit metrotunnel.vic.gov.au/construction/Kensington.

Bus replacements

Buses will replace trains on the Sunbury, Werribee and Williamstown lines between Wednesday 8 February and Sunday 12 February.


Please visit ptv.vic.gov.au for more information and to plan your journey.



More information

To find out more about the Metro Tunnel Project:

 metrotunnel.vic.gov.au

 1800 105 105 (24 hours a day, 7 days a week)

Rail Projects Victoria
PO Box 4509, Melbourne, VIC 3001



Interpreter Service **(03) 9209 0147**

It should be noted that this information is current at the time of printing, however due to unforeseen circumstances, changes may occur. Please visit railprojects.vic.gov.au for the latest updates.