

# ACTIONS AND ISSUES REGISTER



#	DATE RAISED	ACTION / ISSUE	OWNER	STATUS	DATE CLOSED
<i>No actions recorded</i>					



# **SOUTH YARRA (EASTERN PORTAL) PRECINCT**

## **COMMUNITY REFERENCE GROUP**

23 May 2023



# Construction lookahead



Activity	June	July	August	September	October
Egress building construction	Active	Active	Active	Active	Active
Osborne Street Landscaping (CYP)			Active	Active	Active
Osborne Street pedestrian bridge connection					Active
Rail tunnel fit out	Active				
Crane and site shed demobilisation (William Street)		Active			
William Street bridge finishing works			Active	Active	
High Capacity Signalling technology testing	Active	Active	Active	Active	Active



# CONSTRUCTION UPDATE - RNA

# Temporary Arthur Street closure

Between 12am and midday Saturday 1 July



- Installing a fence within the rail corridor near the rail maintenance staircase
- Closing a section of Arthur Street overnight
- A crane will be stationed on Arthur Street and will be used to lower the fence and other materials into the rail corridor
- These works are expected to generate medium levels of noise
- Traffic controllers will be present to manage access for pedestrians and local residents on Arthur Street, as well as to assist with construction vehicle movements around the site.



Eastern Entrance at South Yarra Construction Works - Indicative only.



# CONSTRUCTION UPDATE - CYP

# Egress building construction

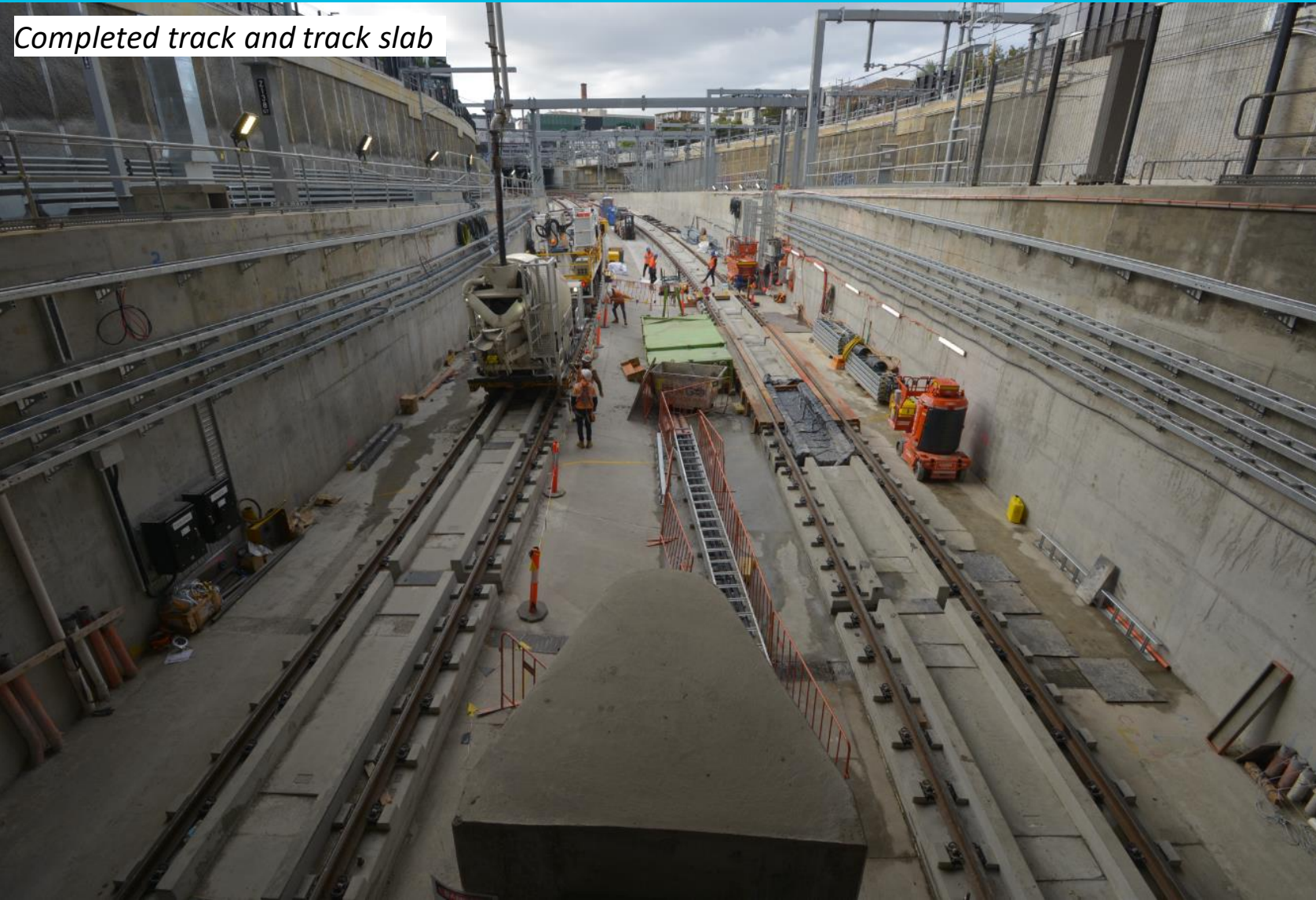


- The final piece of pre-cast concrete was installed on the egress building recently, with the installation of the lift shaft roof
- Structural works are now complete, with works commencing on the external cladding
- The steel supports for the fins around the top of the building will soon be installed
- Building trades are continuing to fit out the rooms with plumbing and electrical equipment

*Egress building prior to lift shaft roof installation*



# Rail tunnel fitout



*Completed track and track slab*

- Track installation and second stage concrete pours are now complete
- Final fitout and clean-up works are underway between Eastern Portal and CBD prior to test trains starting later this year
- Final two overhead rail gantries and overhead tie in works will take place during a 24hr rail occupation from 9pm Friday 30 June to 3am Monday 3 July
- The crane on William Street bridge will then be demobilised in July, followed by the site sheds





# COMMUNITY & COMMUNICATIONS UPDATE

# COMMUNICATIONS

Recent and upcoming communications



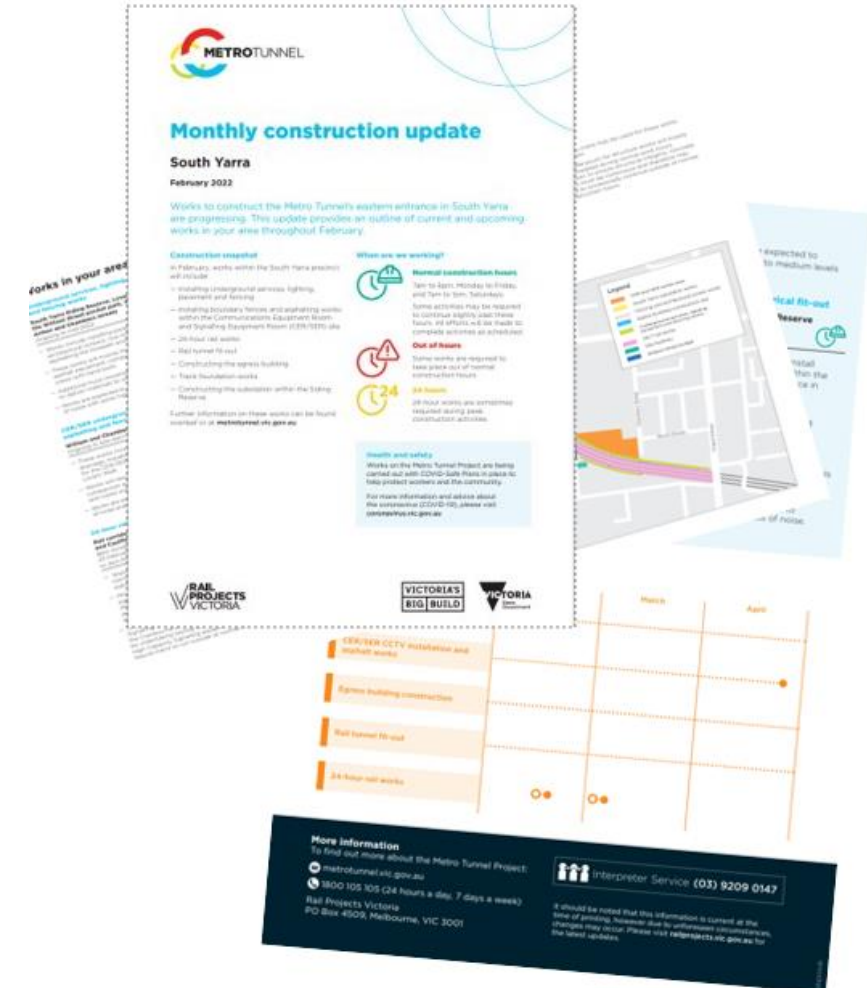
## Notifications and communications

### Current:

- Monthly construction update – June

### Upcoming:

- Monthly construction update – July
- Temporary Arthur Street closure – late-June





# SOUTH YARRA PRECINCT ARTWORK UPDATE

# South Yarra Precinct

## Legacy Artwork Program update



- In late-2021, we advised of a creative opportunity for the Metro Tunnel Legacy Artwork Program
- As part of this process we sought expressions of interest from Victorian First Nations artists to create a permanent public artwork within the South Yarra Precinct
- The artist brief calls for an artwork that responds to the rich cultural heritage of the area and concepts of moving on Country
- South Yarra Siding Reserve is a culturally significant site for the Wurundjeri people with ancestral connection to the local area dating back thousands of generations
- This is an opportunity to share cultural knowledge, celebrate connections to Country and deliver high quality public art for the community.





# South Yarra Precinct

## Artists and locations



- In 2022, two artists were selected from a shortlist of Victorian First Nations artists, by an advisory panel which included representatives from Creative Victoria, City of Stonnington and Wurundjeri Woi Wurrung Cultural Heritage Aboriginal Corporation
- The team oversaw the legacy artwork with representatives from the Wurundjeri Woi Wurrung Cultural Heritage Aboriginal Corporation to ensure the artwork was respectful of Wurundjeri cultural values
- **Kent Morris**, a Barkindji man living on Yaluk-ut Weelam Country in Melbourne was selected to create an artwork for the South Yarra Siding Reserve
- Wurundjeri Woi Wurrung Elder and artist **Aunty Kim Wandin** and collaborating artist **Christine Joy** was selected to create a series of artworks for the Siding Reserve and the new Arthur Street pocket park in South Yarra.





# Where We Walk

Kent Morris



- **Where We Walk** will be a cultural marker of respect, connection, and knowledge. It represents First Peoples knowledge embedded in Country throughout the area, and across the state and country
- The artwork hopes to engage and inspire the community on their daily travels and visits and encourage the public to open their hearts and minds, to look and listen deeply on their journey through the reserve and to embrace the knowledge embedded in Country
- The central source of cultural inspiration for the design is the association of the site with stone knapping and the significant flaked stone artefacts uncovered at the place that speaks to its long connection with the Wurundjeri people
- Kent's artwork aims to increase First Peoples cultural representation in the built environment and to provide a dedicated and considered public space for the exchange of stories, histories, images, and insights and to give visual representation to that which is often unseen.



# Murrup Biik

Aunty Kim Wandin / Christine Joy



- **Murrup Biik** honours the location of a significant Aboriginal cultural site as a series of string bags (Bilangs) to honour the journey of Wurundjeri Woi Wurrung women across Country, and the work of women collecting food to provide for families and as custodians of the land. It aims to change the way people view Aboriginal artefacts and acknowledge that they are a living, breathing life-giving force with spirit and knowledge.
- Murrup Biik means ‘Spirit Country’ and is the name of the sculptural space which incorporates sculpture and light, with on-site plantings. The artwork comprises three colourful sculptures placed across the Siding Reserve and Arthur Street pocket park in South Yarra. Each sculpture features a patterned design of Murnong flowers (native yam), which represent the harvest collected by the Wurundjeri Woi Wurrung women of Victoria.
- Murrup Biik acknowledges the layers and the merging of Country: earth, spirit and sky and creates a place of healing, being and belonging – a culturally safe place for reflection and spiritual growth and a place of Aboriginal representation.



# South Yarra Precinct

## Legacy Artwork Program update



- Both artworks are currently in production and will be installed within the South Yarra Siding Reserve and the Arthur Street pocket park from June 2023
- Both of these public spaces are expected to open to the public in quarter 3, 2023, following artwork installation
- Further information will be provided to the community as this progresses
- Information on the artworks will be available on the Big Build website this week.





# TUNNELS AND STATIONS PROJECT WIDE UPDATE

# Arden Station



- Stone tile paving has commenced at the station entrance and is continuing on platform and concourse levels
- Architectural features and lighting fixtures are being installed on platform, concourse and entrance
- Public realm legacy works are progressing on surrounding roads
- Internal station roads are being built with asphalt and kerbs constructed

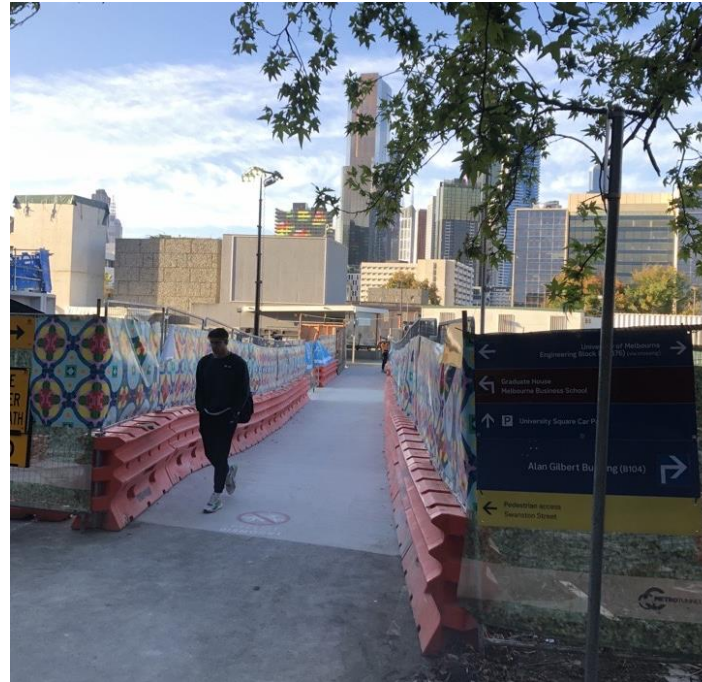




# Parkville Station



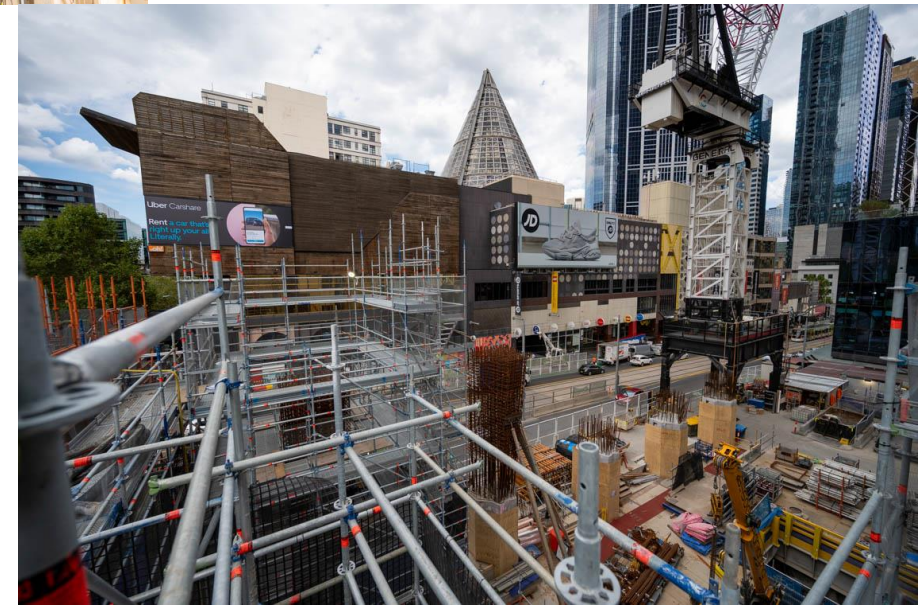
- A mid-block crossing was installed across the Grattan Street east site, allowing north-south pedestrian connectivity
- Backfill has commenced across the main section of the station box, adjacent to Royal Parade
- Architectural, mechanical, electrical and plumbing fit out works are ongoing within the station box
- Staged reinstatement and public realm works are continuing at Grattan Street, Royal Parade and Elizabeth Street.



# State Library Station



- Shaft construction is continuing at all five State Library Station sites
- Columns have been poured at Swanston Street for the station entrance
- Above ground building works are underway at the Little La Trobe Street site
- Platform works are continuing within the station cavern. Platform screen doors are being installed
- Melbourne Central escalator installation works are ongoing.





# Town Hall Station



- Excavation is complete for the lift shafts between Flinders Street Station platforms and the new Town Hall Station. Reinforcement and concreting works are continuing
- Structures works are continuing on the basement levels of the Flinders Quarter Site. Site sheds will soon be demobilised from above Swanston Street
- Works take place below Swanston Street to continue building platforms, lining adits and laying rail in the tunnels via the City Square site.



# Anzac Station



- Works are well underway on the Albert Road Reserve entrance for Anzac Station
- Works have also commenced on the construction of the final legacy alignment for Albert Road
- On platform level, installation of the platform screen doors are complete and feature lighting is being installed.





**QUESTIONS?**