



LEVEL CROSSING REMOVAL

PROJECT

BURKE - NORTH - MCKINNON - CENTRE

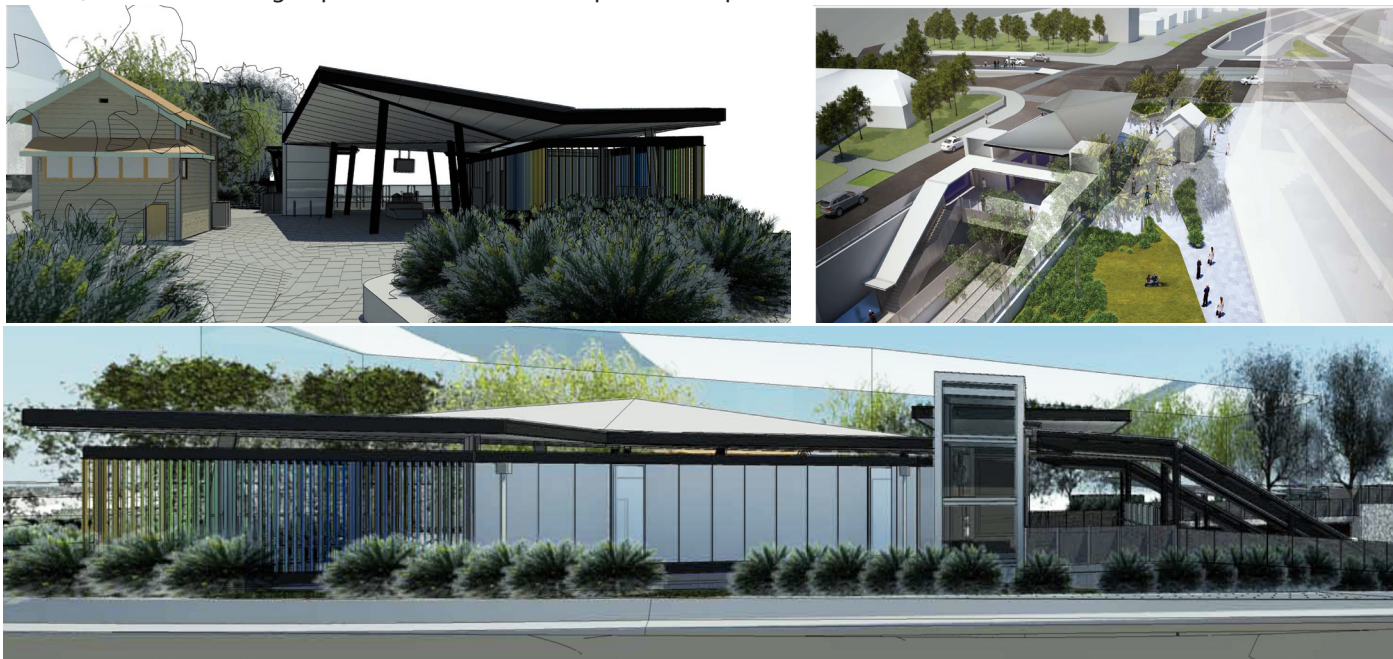
BURKE ROAD

COMMUNITY UPDATE

OCTOBER 2015

The project team is committed to keeping you updated on works for the Burke Road Level Crossing Removal Project; this regular bulletin will provide you with a continuous flow of information about our upcoming work activities.

At Burke Road, the Alliance is removing the level crossing by lowering the rail line under Burke Road, rebuilding Gardiner Station, as well as making improvements to road and public transport connections.



Artist's impression of proposed Gardiner Station

(For more information regarding station design please contact the Burke Road project team)

WHATS HAPPENING?

Gardiner Station

- Construction of the new Gardiner Station is underway, with the team starting to build the station concourse from mid-October. Activities include lifting the station segments into position using a crane from Carroll Crescent, installing services and pouring concrete to form the concourse deck to prepare for construction of the station building.
- Works to construct the lowered platforms in the new rail cutting will begin in late October by installing the structural steel, completing the concrete pour and assembling the platform canopy.
- The new station includes two lifts, stairs and ramps to access the lowered side platforms, a secure bike rack and station building for staff.

King Street/Wills Street Drainage

- The new drainage line will be installed from Monday, 19 October along Wills Street and move towards King Street in late October. These works involve excavation, installation of the pipe, backfilling and reinstating the road. These works will take approximately 2 weeks to complete with temporary detours and traffic management in place. Further information will be provided to impacted residents.

Rail Corridor

- Earthwork activities will continue in the new rail corridor, including excavation and ground reinforcement works to support the new lowered rail alignment along Carroll Crescent and Wills Street.
- Installation of the combined services route (CSR) for the train signals will continue in October and November along the rail corridor. These works include excavation, installation of the new cables and backfilling.

Car Park Underpass

- Ground investigation works have commenced to construct the new access to the station car park from Carroll Crescent, under the rail line.
- Construction of the foundations will begin in late October using a piling rig and excavator, followed by installation of the structural steel reinforcement and concrete pour in November.
- Works to construct the car park will begin in January to prepare for the opening in early 2016.
- The project team has been listening to local residents and is currently reviewing the entrance to the car park to ensure it will operate in the safest way possible, with the least impact on the local community.
- Feedback received has included requests to reduce impacts on local traffic, safety and amenity for local residents. Further details will be provided.



**REMOVING LEVEL CROSSINGS
IMPROVES LOCAL SAFETY
AND REDUCES CONGESTION.**

CONSTRUCTION OF BURKE ROAD BRIDGE DECK

During the recent 9 day closure of Burke Road and the 5 day closure of the Glen Waverly line the following activities were completed:

- 14 excavators used to break out existing tram track slab and excavate for the bridge deck
- Three 630mm diameter and one 500mm diameter drainage pipes installed and hung beneath the bridge deck
- 130 tonne of steel reinforcement tied into the bridge deck in 56 hours
- New service conduits installed into the bridge deck (traffic signals, power, gas, telecommunications)
- 540m3 of concrete poured into the bridge deck in 13 hours
- Realigning 150 metres of tram tracks from the Monash Freeway to the rail line.
- Construction of a new tram stop platform



Excavation of Burke Road for the bridge deck



Installation of services in Burke Road



Steel reinforcement tied into Burke Road bridge deck



Concrete placed into bridge deck

Timelapse footage of the works on Burke Road can be viewed at the [Level Crossings YouTube channel](#)

Stay connected with the project by checking out the following links on social media pages:

Facebook - facebook.com/levelcrossing

Twitter - twitter.com/levelcrossing

Instagram - instagram.com/levelcrossing



Concrete pour on bridge deck



Realignment of tram line and construction of tram stop

COMMUNITY CORNER: OPEN FOR BUSINESS

Local businesses and traders along Burke Road will remain open for business at all times during works.

The project team will ensure adequate signage, traffic management and signed detours for vehicles and pedestrians. This will ensure people can still access the local shopping precinct.

To register for your business to feature in our updates, please send your details to Burke@lcrp1.com.au and include your business name, services, photograph (optional) and contact details.

Little Thai Princess
T: 03 9885 4866
285 Burke Road ,Glen Iris



Special Set Menu offer
Present this voucher when you dine in on Sundays through to Thursday to receive \$10 off banquet menu

Century Cricket
T: 03 9578 9999
279 Burke Road, Glen Iris



SUMMARY OF OUT OF HOURS ACTIVITIES

In order to ensure construction of these works is undertaken safely, and with the least possible disruption to train services, some works are required out of hours when trains are not running.

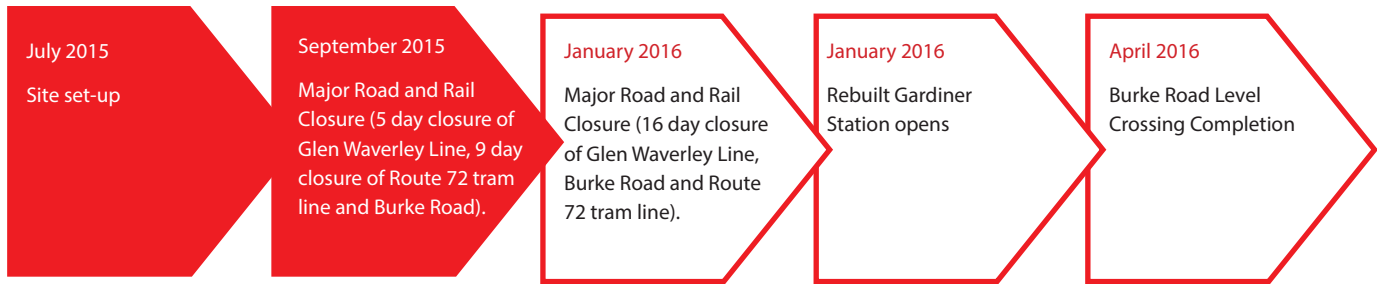
The project team appreciates your patience and understanding and apologises for any inconvenience this may cause.

Our team is focussed on delivering the Burke Road Level Crossing Removal by early 2016

When	Changes to Commuter Services	Activities	Location
Wednesday 21 October to December 2015 Overnight, 6:00pm to 7:00am	No changes to public transport services	<ul style="list-style-type: none"> Construction of the station concourse, lowered platforms and new station building Installation of the trench for the new signalling and services (power, telecommunications etc.) Ground reinforcement earthworks to support the new lowered rail alignment <p><i>(Residents should anticipate high to medium level noise, lighting and vibration impacts as a result of these activities).</i></p>	<ul style="list-style-type: none"> Along the rail corridor (between Burke Road and Clarke Street)
Sunday 25 October 2015 8:00am to 4:00pm	No changes to public transport services	<ul style="list-style-type: none"> Construction of the new station lifts using a crane and small working crew from the lowered cutting. <p><i>(Residents should anticipate medium to low level noise, lighting and vibration impacts as a result of these activities).</i></p>	<ul style="list-style-type: none"> Along the rail corridor (between Burke Road and Clarke Street)
Sunday 8 November 2015 Overnight, 6.00 pm to 7.00 am.	No changes to public transport services	<ul style="list-style-type: none"> Ground reinforcement earthworks Associated rail works <p><i>(Residents should anticipate high to medium level noise, lighting and vibration impacts as a result of these activities).</i></p>	<ul style="list-style-type: none"> Along the rail corridor (between Burke Road and Clarke Street) Kooyong Station
Friday 13 - Monday 16 November 2015 Works will be 24 hours/day during this period.	<p><u>Glen Waverly Line Closure</u> From 9:00pm until the last train service on Friday 13 to Sunday 15 November 2015 buses will replace trains on the Glen Waverley line between Burnley and Darling Station</p>	<ul style="list-style-type: none"> Ground reinforcement earthworks Associated rail works Works to construct the new train line <p><i>(Residents should anticipate high to medium level noise, lighting and vibration impacts as a result of these activities).</i></p>	<ul style="list-style-type: none"> Along the rail corridor (between Burke Road and Clarke Street) Kooyong Station
Friday, 1 January 2016 to Monday, 18 January 2016 Works will be 24 hours/day during this period.	<p><u>Burke Road Closure</u> Wednesday 6 January – Wednesday 13 January 2016</p> <p>Motorists will be unable to use Burke Road between Wills Street/Burke Road and King Street/Burke Road intersection.</p> <p><u>Glen Waverly Line Closure</u> Saturday, 2 January to Monday, 18 January 2016</p> <p>Buses will replace trains on the Glen Waverley line</p> <p><u>Tram Services</u> Thursday 7 January – Monday 11 January 2016</p> <p>Buses will replace trams on the Route 72 line</p> <p>More information on travel changes will be available</p>	<ul style="list-style-type: none"> Road works on Burke Road and Carroll Crescent, including asphaltting and line marking Earthworks under Burke Road bridge deck to prepare for the new rail line Construction of the retaining wall in the rail corridor Installation of the new rail line and connection into the exiting rail line Removal of existing station building and platforms Construction of the car park and underpass on Carroll Crescent Removal and reinstatement of overhead lines along the rail corridor Trucks, cars and utes moving to and from the project site <p><i>(Residents should anticipate high level noise, lighting and vibration impacts as a result of these activities).</i></p>	<ul style="list-style-type: none"> Along the rail corridor (between York Street and Edgar Road) Burke Road (between Monash Freeway and Malvern Road)

* Dates are subject to confirmation and will be updated progressively through this newsletter.

BURKE LEVEL CROSSING REMOVAL PROJECT CONSTRUCTION MILESTONES



More Information

Burke Road Level Crossing Removal Team

Email: Burke@lcrp1.com.au

Call: 9915 4788 (business hours - Monday to Friday and during out of hours works).

Web: levelcrossings.vic.gov.au

Translation service



For languages other than English, please call 03 9280 0780.

Please contact us via these details to register for SMS or email updates.