



KILMANY WORKS CONTINUE

PRINCES HIGHWAY EAST UPGRADE

AUGUST 2023



We're upgrading the Princes Highway between Traralgon and Sale to improve safety and reduce travel times.

From **Saturday 3 June to Monday 24 July**, while sections of the Gippsland and Bairnsdale rail lines were closed, we finished building the new Kilmany rail bridge and slid it 27 metres into its final position over the Traralgon to Bairnsdale rail line.

On **Tuesday 25 July**, we welcomed the first passenger train over the iconic new bridge, marking another major milestone for the project.

We've also made great progress building the new lanes on the Princes Highway. Recently we've:

- continued installing new drainage along the Princes Highway, west of Kilmany township
- upgraded and reopened the Sale-Toongabbie Road intersection, including access to Princes Highway
- switched traffic onto the newly built Princes Highway lanes south of Sale-Toongabbie Road
- upgraded drainage and installed kerbing along the new Kilmany Service Road.

Image: Passenger train passing over the new Kilmany rail bridge.

Bridge statistics



STATISTIC	QUANTITY
Bridge length	95 metres
Bridge height	14 metres
Bridge weight	3200 tonnes
Load capacity	300LA (~30 tonne axle loads)



Sign up for updates
Subscribe for email and SMS updates
at roadprojects.vic.gov.au/subscribe



HOW TO MOVE A 3200-TONNE BRIDGE

After 13 months of construction, we began the complex job of moving the new 3200-tonne rail bridge into its final position over the rail line in July. Here's how we did it:



- 1 With all the steel arch segments in place, we installed and tensioned 76 steel bridge hangers to hold the bridge together.



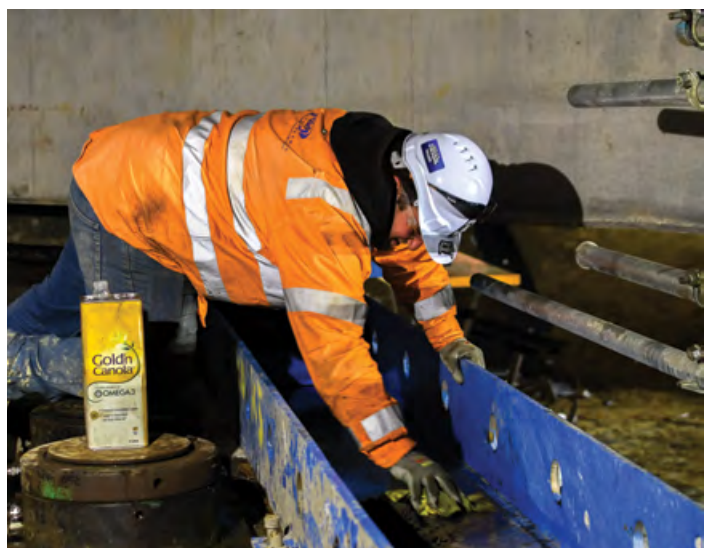
- 2 We then removed some of the temporary towers and bridge support structures.



- 3 We installed a jack and sledge system underneath the bridge that would slowly lift and push it into its final resting place.



- 4 To make room for the bridge, we had to dig out more than 18,000 tonnes of material from the existing rail line and surrounding area.



- 5 Who'd have guessed that everyday canola oil was the best lubricant to help the bridge slide mechanisms run smoothly?



6 | Moving at just 0.0008 km/h, it took two days to slide the 3,200-tonne rail bridge 27 metres into place over the rail line.



7 | Once the bridge was in position, we installed the rail line over the bridge.



8 | On Tuesday 25 July, we welcomed the first passenger train over the new bridge.



9 | On average, 50 specialist workers were onsite each day during the bridge's construction.



A local icon for the Kilmany region

The iconic new Kilmany rail bridge is the first of its kind for Victoria.

The unique network arch design features inclined hangers that evenly distribute weight across the entire bridge with minimal bending. This allows the bridge to span the new four-lane highway and carry heavy passenger trains without needing a central support pillar.

More than 450 tonnes of steel was used to build the bridge. We chose a special type of steel that is exceptionally strong while also being lightweight and flexible.

We built the bridge "offline" to the side of the existing rail line. This allowed V/Line train services to keep running until the bridge was ready to be moved into place.

Thank you to commuters and Kilmany residents for your patience while crews worked to install this local icon.

LEAVING A LEGACY

Kilmany bus turn-around area

We've relocated the school bus stop in Kilmany to a safer location next to the Kilmany Town Hall. We've also built a new bus turnaround area, with fencing and upgraded bus shelters made from pipes recycled from the project.



What's coming up

Works around the rail bridge continue

From **Monday 21 August to Sunday 10 September**, sections of the Gippsland and Bairnsdale rail lines will be closed. We'll use this time to:

- build retaining walls
- remove the remaining temporary concrete bridge support structures
- continue excavation and drainage works under the new rail bridge
- start building the new Princes Highway lanes underneath the bridge.

During this time, coaches will also replace Gippsland Line trains for the entire journey between Southern Cross, Traralgon, and Bairnsdale. Please visit Vline.com.au for more information.

Princes Highway

In the coming months, we'll also:

- continue rehabilitating the existing Princes Highway lanes
- upgrade the Kilmany Service Road with a screen fence to minimise light impacts on the Kilmany township
- move traffic onto the upgraded Melbourne-bound Princes Highway lanes west of Sale-Toongabbie Road.

To switch traffic onto the new lanes, we'll need to move barriers along the Princes Highway. To do this safely, there will be extra traffic management, lane closures and delays of up to **10 minutes**.

Please allow additional travel time and follow all on-road signage and directions from traffic controllers.

Thank you for your patience while we complete these works. Subscribe for email and SMS updates at roadprojects.vic.gov.au/subscribe.



We've donated tyres to Wurruk Primary School to enhance their garden beds and playgrounds.

roadprojects.vic.gov.au



For languages other than English please call 9209 0147

1800 105 105 (call anytime)

contact@roadprojects.vic.gov.au



Please contact us if you would like this information in an accessible format. If you need assistance due to a hearing or speech impairment, visit relayservice.gov.au



Australian Government

