

# How we manage construction

## We're closing the level crossing at Cave Hill Road, Lilydale to improve safety and allow more trains, more often on the Lilydale Line.

We will build a new pedestrian underpass to provide a safer connection across the rail line to Lilydale High School and nearby homes and businesses, with links to future pedestrian and cycling paths.

Construction will start in December 2023 with the new pedestrian underpass opening a year ahead of schedule in 2024. This will help make the Lilydale Line level crossing free in 2024.

This factsheet provides more information about what to expect when major construction begins.

### Noise vibration and dust monitoring

During construction, we will actively monitor noise and vibration levels to make sure they are within Environment Protection Authority guidelines. Learn more about these guidelines here: [epa.vic.gov.au](http://epa.vic.gov.au)

To minimise impacts to the community we will install dust, noise and vibration monitors around the work site to measure air quality, sound and vibration at regular intervals. This will help ensure we have the right controls in place during our works.

**We will monitor sound levels before and during works so we can assess the impact to residents and implement further mitigation measures where necessary.**

### How we reduce noise and vibration

To minimise noise impacts for the community, we have a range of measures in place, including:

- using quieter reversing alarms on our vehicles and machines
- keeping our machines in good working order
- programming noisy works to occur during the day
- using localised, noise dampening measures
- working within approved construction times, between **7am and 5pm Monday to Friday, and 7am and 3pm on Saturdays,** whenever possible.

### How we reduce dust

We use a range of methods to minimise dust and mud and keep the air clean in your community. These include:

- staging work to minimise the areas exposed to wind
- spraying exposed areas with water, especially on hot and windy days
- covering truck loads and stockpiles
- reducing the speed of construction vehicles
- monitoring air quality to ensure all construction activities comply with Victorian guidelines.



### Truck movements

When major works get underway in 2024, there will be an increase in heavy vehicle movements, with more trucks and workers in the local area.

To reduce any impacts, we aim to move trucks - particularly those carrying excavated material - away from construction sites and onto the arterial road network via Maroondah Highway.



Boom gate removal at Manchester Road, Mooroolbark



Works underway at Coolstore Road, Croydon

## Other projects in your area

In addition to the Cave Hill Road, Lilydale level crossing removal project, we're also removing level crossings at Coolstore Road, Croydon; Dublin Road, Ringwood East; and Bedford Road, Ringwood. In 2024 this will make the Lilydale Line the first rail line to be level crossing free and the Belgrave Line will be level crossing free between Ferntree Gully and the city.

We will schedule construction works on each project to coordinate impacts to road users and pedestrians as much as possible.

## Preserving trees and vegetation

**We will retain more than 400 trees in the project area, working closely with arborists and environmental and sustainability specialists.**

We aim to reduce the impact of our project on trees and vegetation wherever possible. However, some trees and vegetation will need to be removed, particularly around the railway corridor, to build the new underpass and install critical rail infrastructure and underground services. This will ensure trains can run safely and efficiently.

Before tree and vegetation removal, we engage and work with licenced

fauna handlers who inspect trees and vegetation, and safely rehome any fauna we may encounter.

These fauna handlers are also on site during any vegetation removal works to safely relocate any fauna discovered unexpectedly.

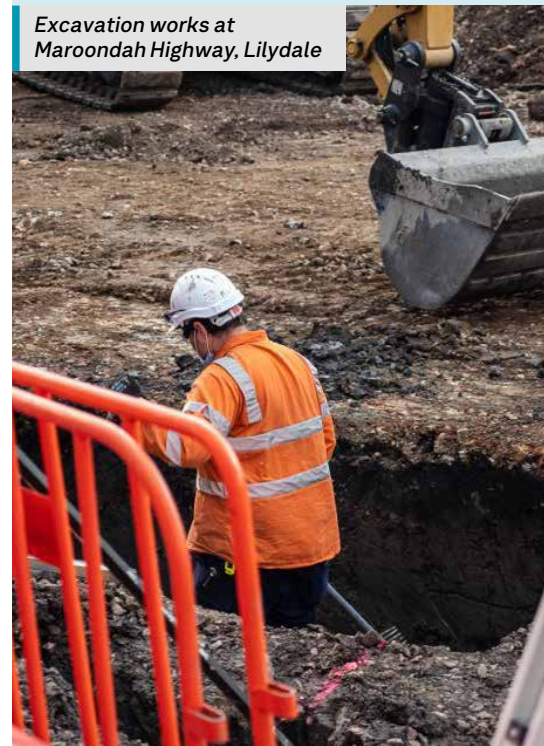
At the conclusion of the project, we will install new landscaping and more than 7,000 new plantings, including trees, shrubs and grasses to complement the green leafy area.

## Project timeline

- ✓
**2022**
  - Project announcement
- ✓
**Late 2023**
  - Early works begin
- **Early 2024**
  - Major construction begins
  - Permanent closure of Cave Hill Road at the level crossing
- **2024**
  - Level crossing gone for good
  - New pedestrian underpass opens
  - Lilydale Line level crossing free

*\* Timeline subject to change.*

Excavation works at Maroondah Highway, Lilydale



[levelcrossings.vic.gov.au](http://levelcrossings.vic.gov.au)

[contact@levelcrossings.vic.gov.au](mailto:contact@levelcrossings.vic.gov.au)



For languages other than English, please call 9209 0147.

1800 105 105 (call anytime)

Please contact us if you would like this information in an accessible format. If you need assistance due to a hearing or speech impairment, visit [relayservice.gov.au](http://relayservice.gov.au)

