

# Level crossing upgrades

We've upgraded level crossings on the Shepparton Line, enabling VLocity trains to travel to and from Shepparton for the first time.

As part of the Shepparton Line Upgrade, we have upgraded 59 level crossings between Donnybrook and Shepparton with new train detection technology. These upgrades have improved safety for road users and train passengers, and allowed VLocity trains to travel on the line since October 2022.

Safety was further boosted at 32 of these level crossing locations with the installation of boom gates, flashing lights and bells.

## Why did these crossings need improved protection?

The more modern VLocity trains that now run on the Shepparton Line accelerate faster and are lighter than the classic fleet, which is why improved train detection technology was required.

Level crossings with multiple safety features such as boom gates, flashing lights and bells ensure that road users, train passengers and staff are alert and aware near railway tracks.

Trains are fast moving, so it is important to use visual (seen) and auditory (heard) means to alert all nearby road users to take extra care near the tracks, particularly at crossings.

## How do the upgraded level crossings operate?

The boom gates, flashing lights and bells are automatically activated by triggers on the track every time a train approaches.

The waiting time at level crossings depends on train traffic. The crossing stays activated until the train passes through and the section is clear.

## More benefits for Shepparton Line passengers

Stage 3 of the Shepparton Line Upgrade is well underway, to deliver more frequent and reliable services.

Major construction works on Stage 3 of the project progressed during a rail shutdown in March and April 2024, with works including rebuilding track through level crossings and improving bridges between Murchison East and Seymour undertaken.

New signalling infrastructure has also been installed along sections of track between Seymour and Nagambie, and between Murchison East and Toolamba.

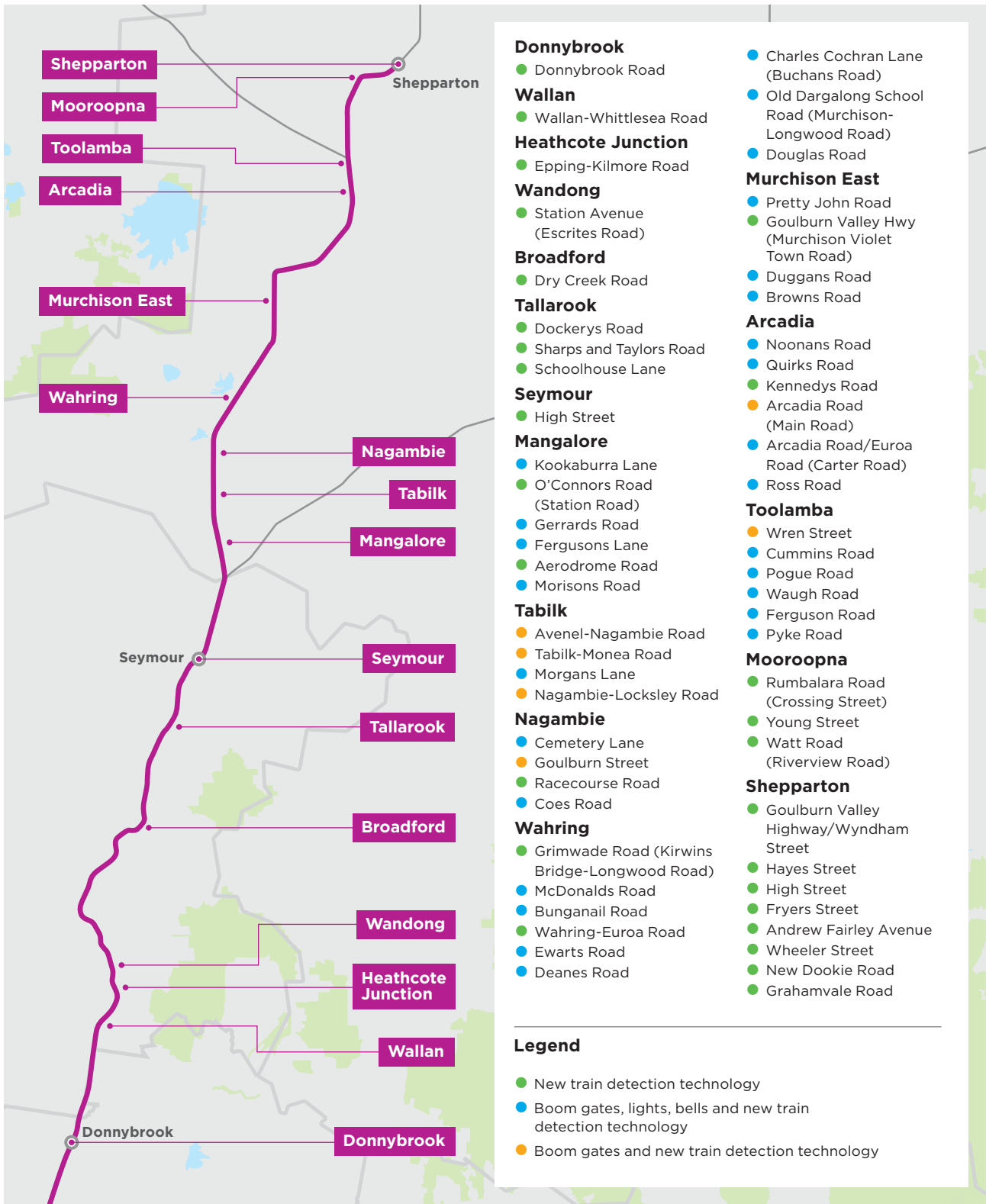
The Shepparton Line Upgrade is modernising public transport throughout the region and will deliver nine return weekday services for Shepparton Line passengers when the project is complete.

Major upgrades to a 26-kilometre section of track took place late last year.

The project has already upgraded stations at Murchison East, Nagambie and Mooroopna, delivered extra services and enabled modern VLocity trains to operate on the line.

Upgrades already delivered as part of Stage 3 of the Shepparton Line Upgrade include expanded stabling for VLocity trains and a further extension of the Murchison East passing loop to boost capacity on the line.





**More information**

🌐 regionalrailrevival.vic.gov.au

☎ 1800 105 105  
(24 hours a day, 7 days a week)

🗣️ Interpreter Service (03) 9209 0147

It should be noted that this information is current at the time of printing, however due to unforeseen circumstances, changes may occur. Please visit regionalrailrevival.vic.gov.au for the latest updates.