

Train arriving at the new Ringwood East Station



Dublin Road, Ringwood East / September 2024

Ringwood level crossing free

The dangerous and congested level crossing at Dublin Road, Ringwood East is gone for good – making the Lilydale Line level crossing free, a year ahead of schedule.

In July, we farewellled the Dublin Road, Ringwood East boom gates and opened a brand-new Ringwood East Station.

This follows the removal of the Bedford Road, Ringwood level crossing earlier this year, and makes the Belgrave Line level crossing free between Ferntree Gully and the city.

During a 6-week construction blitz that kicked off in late May, more than 200 people worked around the clock to dismantle the boom gates, demolish the old Ringwood East Station, and complete the 650-metre rail trench.

Crews laid 8000 tonnes of ballast, 2500 sleepers, 1.9 km of rail track and lifted in the last station building.

The new Ringwood East Station features lifts and stairs, CCTV, and improved lighting.

Throughout spring, crews will be in the area completing the station's second entrance, new landscaping, upgraded pedestrian and cycling paths, and the new station car park with more than 460 spaces, including more accessible car spaces.



Why these level crossings needed to go



More than **23,000 vehicles** travelled through the level crossings daily



Boom gates were down for up to **23 minutes** during the morning peak



34 trains during the morning peak



Improving safety and reducing congestion



Sign up for updates
levelcrossings.vic.gov.au





Trains at the new Ringwood East Station

New Ringwood East Station open

The new Ringwood East Station opened on Monday 8 July, with the first trains running through the new 650-metre rail trench in the early hours of the morning and stopping at the new station.

Landscaping and other works, including completion of the car parks will continue over the coming months. We'll keep the community informed on what to expect.

Ringwood East community celebration

To thank Ringwood East locals for their patience during our level crossing removal works, we are holding a celebration event for the community in spring.

There will be fun activities for kids young and old, and free treats sourced from local traders.

Sign up to our e-updates and SMS updates for more information in the coming weeks.

New connections at Bedford Road

Earlier this year, we removed the dangerous and congested level crossing at Bedford Road, Ringwood by lowering the rail line into a 380-metre trench.

We've also built the missing pedestrian and cycling link that connects the 19.2 kilometre Heathmont Rail Trail to Bedford Park.

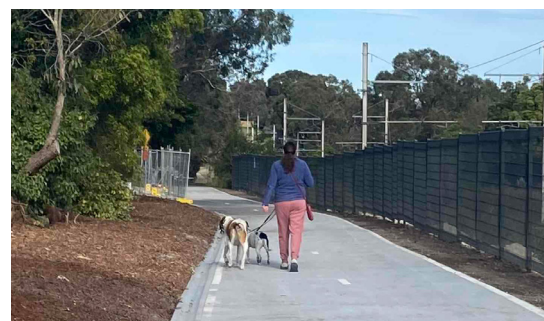
The new connection removes the need for pedestrians and cyclists to travel on-road via Lena Grove, improving safety and connectivity in the area.

Landscaping and finishing works

We've completed landscaping works at Bedford Road which include more than 60,000 native trees, plants and grasses being planted across the local Ringwood area.

Minor works will continue around Bedford Road and at the new community green space until late 2024.

Once complete, there will be more open space for locals to enjoy.



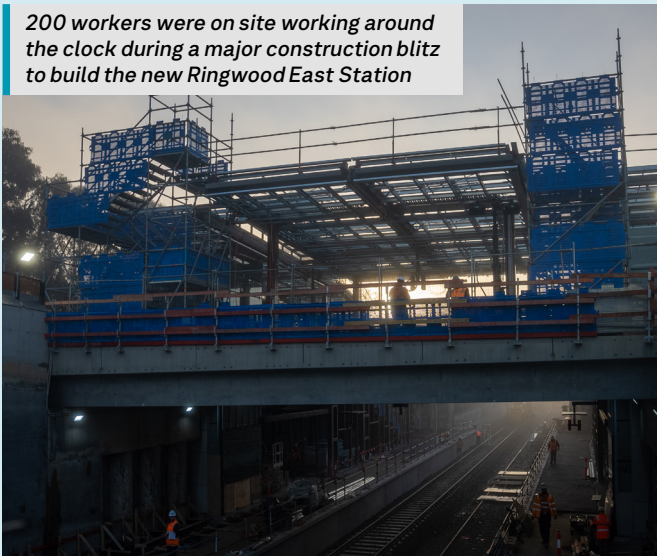
Local dog walker using the new shared use path near Bedford Road



Local family using the new shared use path

Progress in pictures

200 workers were on site working around the clock during a major construction blitz to build the new Ringwood East Station



The new Ringwood East station concourse provides access to local shops and businesses



2500 sleepers and 1.9km of rail track were laid through the new rail trench



Cars drive over the boom gate free Dublin Road



Ringwood East Station opening



Exterior works on the new rail trench at Dublin Road



Boom gate being dismantled at Dublin Road





'Turtle Guardian' will greet passengers at the new Ringwood East Station. Artist impression only, subject to change.

Sculpture by local artist: 'Turtle Guardian'

Later this year, a large turtle sculpture created by local artist, Katie Stackhouse, will greet passengers at the new Ringwood East Station.

The 'Turtle Guardian' is inspired by the local Eastern Long-necked Turtle that lives in the waterways and lands in the surrounding area.

The bronze sculpture will form a meeting place for the community and is intended to act as a charm for safe travel.


Katie Stackhouse is a local early career artist based in Melbourne, who has an interest in the way humans can form connections, with botanical and animal life, water and a site's geology.


Katie shared her inspiration for the artwork:

"This sculpture evolved after the memorable experience of rescuing a turtle on a busy road between Ringwood and Warrandyte. I began to think of the geometric structure of the turtle shell as a protective form, functioning as a poetic guardian for travellers, and a symbol for safe passage as people move, travel and connect in their daily lives. I'm delighted to be making this work and look forward to seeing the community engage with it."

Stay informed

 Sign up to email updates at levelcrossings.vic.gov.au/subscribe

 Sign up for SMS alerts by texting **RINGWOOD** to **0428 387 902**

 Follow Level Crossing Removal Project on social media

Project timeline



2022

- Project designs released
- Contract awarded



Early 2023

- Site establishment
- Early works



Mid-late 2023

- Major construction underway
- Final landscaping designs released



Early 2024

- Bedford Road level crossing removed



Mid-late 2024

- Dublin Road level crossing removed
- New Ringwood East Station opens
- Bedford Road landscaping and shared use path completed
- Dublin Road landscaping and car parks completed






* Timeline subject to change.

levelcrossings.vic.gov.au

contact@levelcrossings.vic.gov.au



For languages other than English, please call 9209 0147.

1800 105 105 (call anytime)     

Please contact us if you would like this information in an accessible format. If you need assistance due to a hearing or speech impairment, visit relayservice.gov.au

