



Heatherton Community Reference Group

Meeting #10

18 February 2025



We respectfully acknowledge the Traditional Owners of this land
and pay respect to their Elders, past and present.



Welcome and updates

Agenda

Topic	Speaker
Actions	Kim
SRLA update	SRLA
Communications and engagement summary	Laing O'Rourke and Suburban Connect
Upcoming works summary	Laing O'Rourke and Suburban Connect
Initial and Early Works update	Laing O'Rourke
Break	All
Tunnels South update	Suburban Connect
Forward program	Laing O'Rourke and Suburban Connect
Other business	SRLA
Questions	All

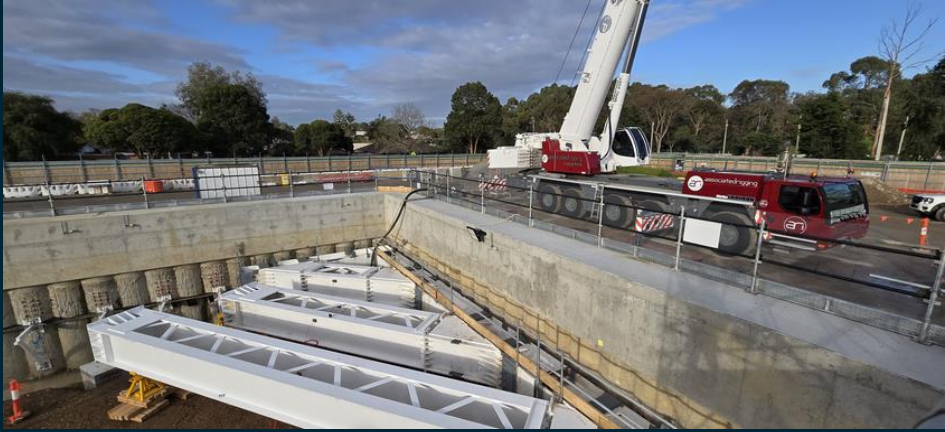
Actions

Action	Owner	Due	Status
Future presentation opportunities: 1. 631 bus route – Department of Transport and Planning – DTP (Closed) 2. Traffic assessment process including Kingston Road traffic assessment (Apr*) 3. Urban Design Advisory Panel (Aug*) 4. Public Open Space offset process and timeline (Aug*) 5. Ground improvement scope update (Oct*) 6. Updated scope for each work package since the EES (Oct*)	SRLA	Future meeting (*Targeted dates subject to change pending updates available)	Ongoing
Suburban Connect (SC) to investigate using SMS alerts for asbestos updates	SC	February CRG	Closed
SC to investigate sharing air quality monitoring results	SC	February CRG	Closed
SC to confirm if residential fences along Kingston Walk Linear Reserve can be replaced	SC	February CRG	Ongoing
SRLA to investigate holding 2025 meetings on non-sitting days	SRLA	February CRG	Closed

Suburban Rail Loop Authority update

Project progress

Left: Burwood Tunnel Access Shaft strut installation (top and bottom)
Middle: Box Hill temporary bridging structure (top and bottom)
Right: Glen Waverley utility relocations and road realignment (top) Monash Shandeanu Avenue road modifications (bottom)



Out of Hours Works | Documents and requirements

The approval and management of Out of Hours Works (OOHW) required for SRL East are guided by these documents and requirements; the project must track and monitor compliance with these requirements.

Suburban Rail Loop Authority / Contractors

Overarching SRL East documentation

- *Environmental Management Framework (EMF)*
- *Environmental Performance Requirements (EPRs)*
- EPR NV2 & EPR NV3

Contractor requirements

- EPRs are embedded into the technical requirements for each contractor
- Develop an Environmental Strategy outlining compliance with EPRs
- Develop management plans and works proposals for verification by the IEA ahead of works
- Ongoing monitoring and management of OOHW

Related documents

- *SRL East Residential Support Guidelines*
- *EPA Victoria civil construction, building and demolition guide*

Independent oversight

Independent Environmental Auditor (IEA)

- Engaged by SRLA to provide independent review and verification of compliance with the EMF and EPRs
- Review and verify environmental documentation and undertake audits
- Onsite Audits to check controls are implemented and plans are followed
- Verify processes of continual improvement are in place

Out of hours works | EPR summary

EPR NV3 – Develop and implement a Construction Noise and Vibration Management Plan (CNVMP)

- Prepare, implement and maintain a CNVMP that minimises noise and vibration impacts so far as reasonably practicable. The CNVMP must be reviewed and updated as appropriate at least every six months and the IEA must provide written verification of each review.
- The CNVMP must include information such as:
 - Noise and vibration modelling, including updated modelling as phases of work change
 - Justification for works and how the works will be managed
 - What processes will be implemented for communications and stakeholder engagement, including notification requirements and responding to complaints
 - Monitoring protocols to establish baseline conditions
 - How works will be effectively monitored

NOTE: summary only, full EPR available online

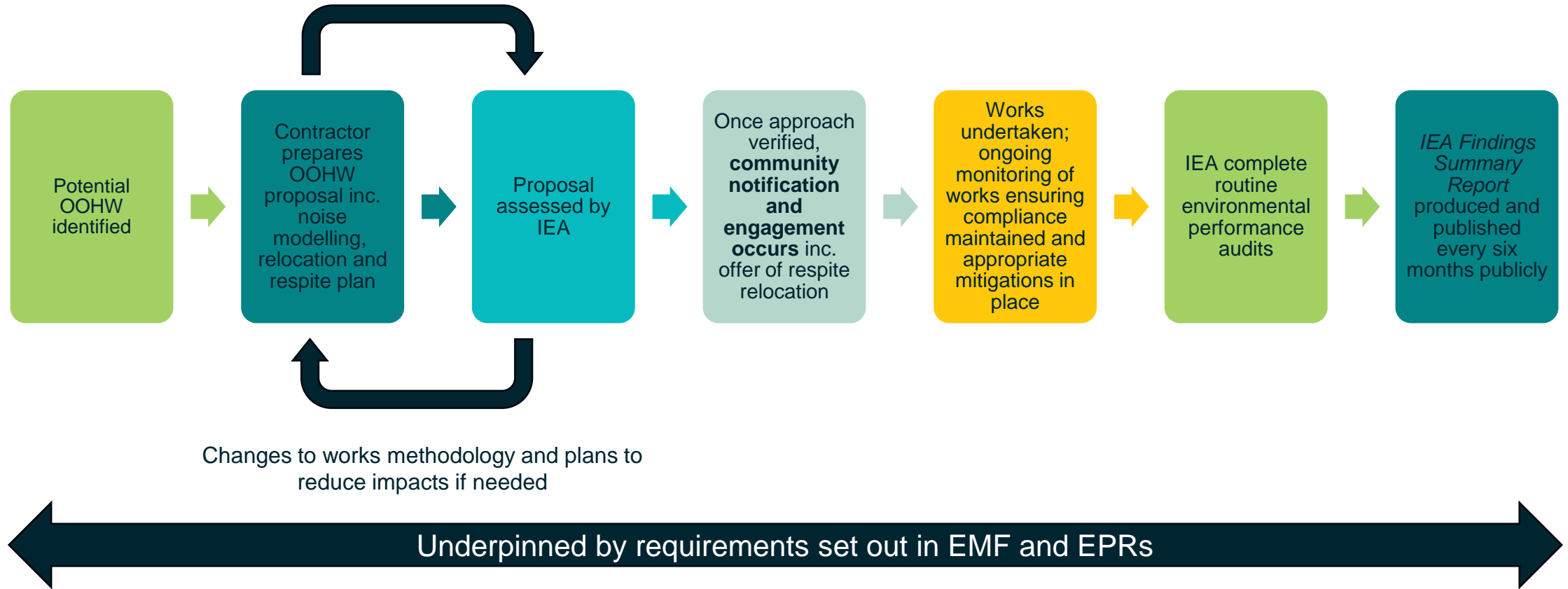
Out of hours works | EPR summary

EPR NV2 – Minimise out of hours construction works and their impacts

- Works from 6pm to 7am Monday to Friday, before 7am and after 1pm on Saturday, and anytime on Sunday are considered out of hours works (OOHW) as defined in EPA Publication 1834.1.
- EPA classify OOHW as:
 - **Low-noise impact works** (quiet and unobtrusive works e.g. painting or cabling)
 - **Managed-impact works** (works managed through a specified noise and vibration management plan)
 - **Unavoidable works** (works which pose an unacceptable risk to life, property, traffic, as well as works that have commenced and cannot be stopped)
- The IEA will review and assess any managed-impact and unavoidable works to determine if the works are justified, if appropriate mitigations are in place, and if proposed management is in line with the *SRLA Residential Support Guidelines* prior to these works proceeding.

NOTE: summary only, full EPR available online

Out of hours works | Process



Communication and engagement | Update

- Since last CRG (November), Laing O'Rourke received **27 complaints** from 17 stakeholders (as at 7 Feb)
- Key themes included:
 - Traffic changes
 - Light spill and noise
 - Dust
 - Road/lane closures
- Since last CRG, Suburban Connect received **3 complaints** from 3 stakeholders (as at 7 Feb).
- Themes were:
 - Tree removal inside the boundary of Western Tunnel Entrance
 - Dust and asbestos enquiry relating to works at the Tunnel Access Structure
 - Odour coming from open sewer during investigative works

Upcoming works summary

Heatherton | Works lookahead

Works	2025		
	Feb	Mar	Apr
Kingston Road			
Utility relocations <ul style="list-style-type: none"> • Westbound closure to late March • No right turn onto Old Dandenong Road from late-February to late-March • Changed traffic conditions including lane and road closures 			
Establishing a worksite at western end of Stabling Facility, inc. fencing and vegetation removal <ul style="list-style-type: none"> • Eastbound traffic changes early March to mid May 			
Old Dandenong Road			
Utility relocations <ul style="list-style-type: none"> • Southbound lanes closed at Kingston Road 			
Network support facility (NSF)			
Construction within Stabling Facility site			
Eastern tunnel entrance (ETE)			
Excavation works <ul style="list-style-type: none"> • 24/6 works from March, increased truck movements 			
Western tunnel entrance (WTE)			
Site establishment, levelling and excavation <ul style="list-style-type: none"> • Temporary fencing in Kingston Linear Reserve • Works under asbestos conditions • Increased truck movements via Old Dandenong Road 			

Clarinda | Works lookahead

Works	2025		
	Feb	Mar	Apr
Clarinda TBM launch site			
Site establishment, including tree and bund removal <ul style="list-style-type: none"> • Works under asbestos conditions (safe removal) • Truck movements • Piling • Installation of Bentonite plant 			
Kingston Road			
Minor works around U-turn including lighting installation			
Water Connection – westbound lane closure, approx. 2 weeks			

NOTE: timing is indicative and subject to change

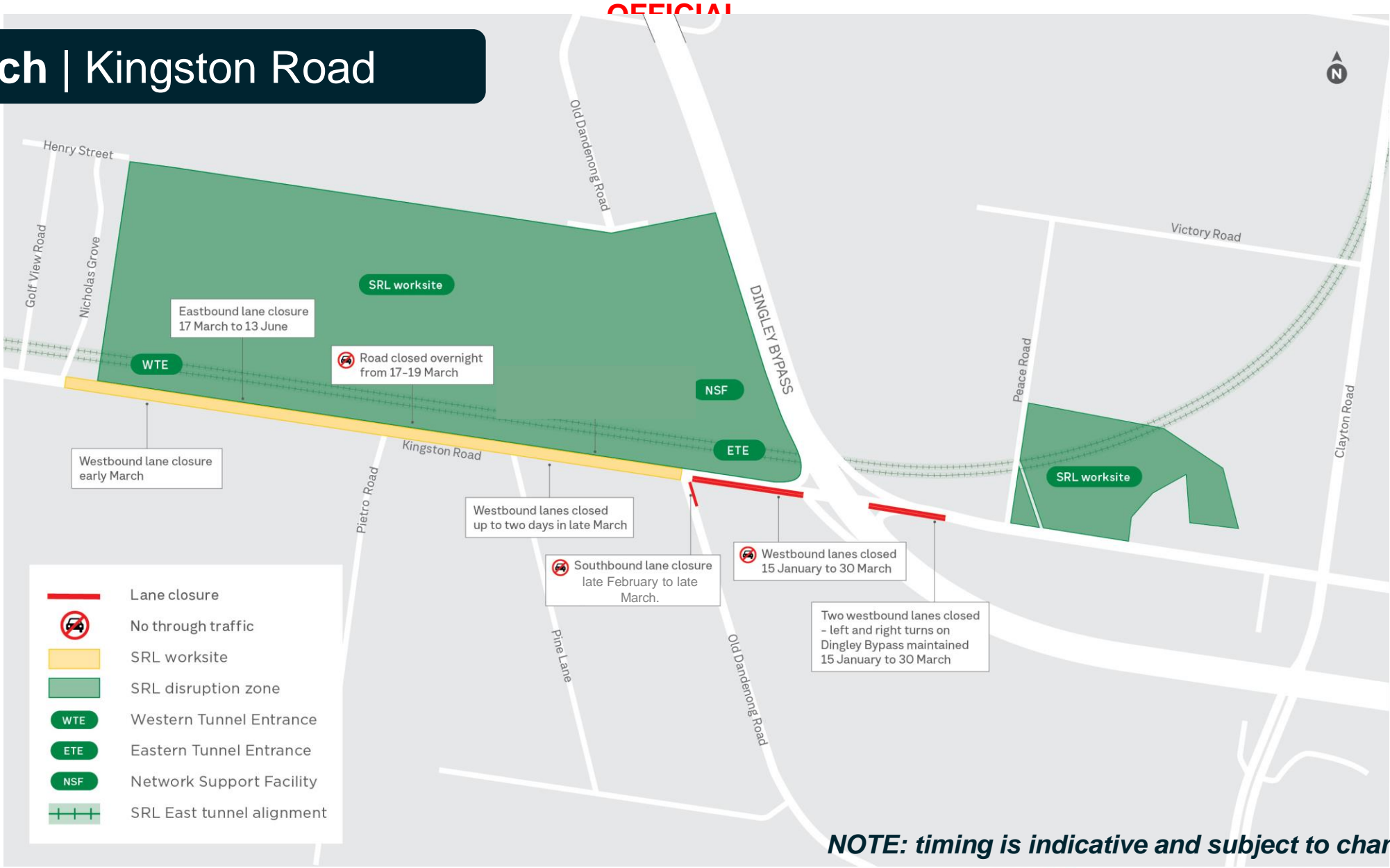
February | Kingston Road



- Lane closure
- No through traffic
- SRL worksite
- SRL disruption zone
- Western Tunnel Entrance
- Eastern Tunnel Entrance
- Network Support Facility
- SRL East tunnel alignment

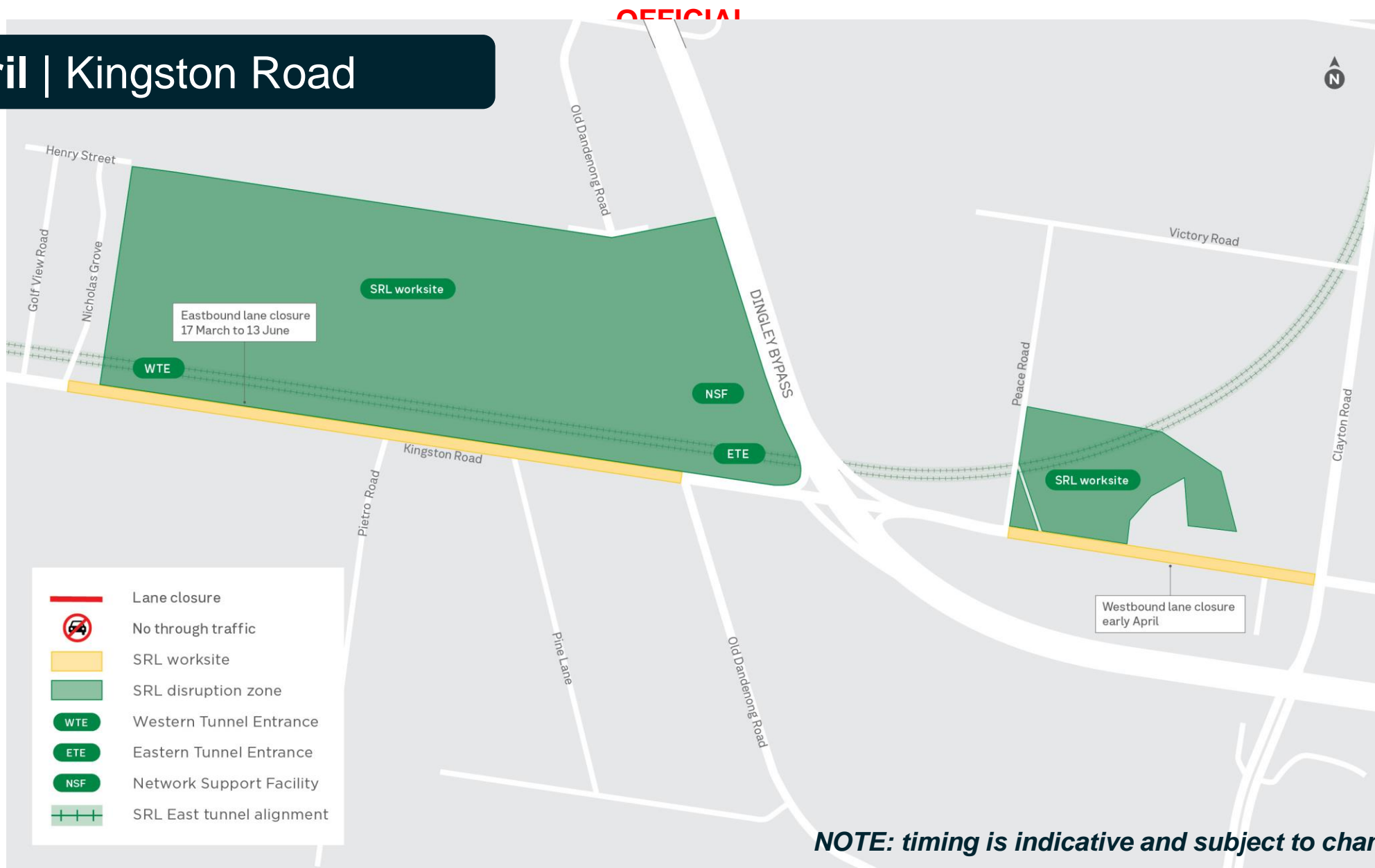
NOTE: timing is indicative and subject to change

March | Kingston Road



NOTE: timing is indicative and subject to change

April | Kingston Road



NOTE: timing is indicative and subject to change

Truck haulage routes | Stabling Facility

There will be increased truck movements (in and out of site) during upcoming works, including excavation, at the Stabling Facility.

Suburban Connect and Laing O'Rourke are working together to coordinate haulage needs to ensure we minimise impacts to the surrounding community.

Western Tunnel Entrance and Tunnel Access Structure

There will be up to 210 truck movements in and out of the site from late February.

Eastern Tunnel Entrance

There will be around 100 truck movements per shift on a 24/6 basis for approximately one week in March.

Additional excavation will occur mid year, with further 24/6 truck movements.

These trucks will be lined, filled and sealed before travelling from site.



Initial and Early Works

Current works

Eastern tunnel entrance

- D-wall construction complete
- Dewatering works commenced in February
- Excavation expected to commence in March and will continue in stages through to late 2025

Stabling Network Support Facility

- 22kv building delivered and installed in January
- Power conduit installation in progress
- Power relocation works in progress



Current works

Water, power & telecommunication relocations

- Westbound road closure on Kingston Road and right turn into Old Dandenong Road closed
- Works within site (near Dingley Bypass), Elder Street Sth and on Henry Street ongoing
- Ongoing engagement with Diaco's Garden Nursery, Heatherton Dingley Uniting Church, CLOCworks theatre group and Christway College throughout



Key milestones



Completed western heavy vehicle entrance construction in December 2024

Noise monitoring

- The project is continuing to monitor noise levels 24 hours per day at various locations around the Heatherton and Clarinda sites
- Between November 2024 and February 2025 there have been **zero** exceedances of noise levels
- As works begin at both Heatherton and Clarinda, Suburban Connect will begin reporting noise levels from the April CRG



★ Monitor location

Break

Tunnels South update

Asbestos containing material | Monitoring

Monitoring for the presence of any airborne asbestos fibres has been occurring at the Western Tunnel Entrance since 13 September 2024.

All air monitoring results to date have been below the limit of detection for the sampling method (<0.01 fibres/ml of air), providing assurance the controls in place are effective.

Asbestos containing material | Monitoring results

Date	Sample Location	Sample period (start-finish)	Avg. flow (mL/min)	Fibres per mL of air
20 November 2024	Excavator DH378	08:14 - 13:32	2000	<0.01
	Western boundary adjacent residential area, on fence	08:23 - 13:32	2000	<0.01
21 November 2024	Excavator DH378	08:36 - 15:05	1500	<0.01
	Western boundary adjacent residential area, on fence	09:11 - 15:05	1500	<0.01
22 November 2024	Western boundary near residential properties, on fence	08:05 - 12:45	1500	<0.01
	Excavator DH377	08:08 - 12:40	1500	<0.01
26 November 2024	Western boundary near residential properties, on fence	07:33 - 15:00	1500	<0.01
	Excavator DH386	07:55 - 15:03	1500	<0.01
27 November 2024	Excavator DH377	09:17 - 14:15	2000	<0.01
	Excavator DH386	09:20 - 14:09	2000	<0.01

Note: This table provides a sample of results across multiple monitoring locations at the Stabling Facility west site to provide an overview of the results across the worksite. There was a gap in reporting between 22 November and 26 November as no works occurred during this period.

Asbestos containing material | Update

- **Safety of the community and workers is our highest priority**
- All activity related to asbestos removal errs on the side of caution – even if non-friable
- Works to level the Western Tunnel Entrance site, including significant earthworks, will begin from February 2025. The site level will be lowered between two and three metres
- Works have begun at the Tunnel Access Structure and include removing the bund (earth mounds) from around the site
- In line with WorkSafe regulations, work will be carried out under ‘asbestos conditions’ – safest and most stringent way to remove the material and safeguard community and worker health
- Contaminated material will be loaded onto lined trucks, sealed, and safely disposed of at an accredited facility
- Contaminated material is non-friable and does not pose a health or safety risk to the community
- Air quality monitoring will remain ongoing

Western Tunnel Entrance, Heatherton

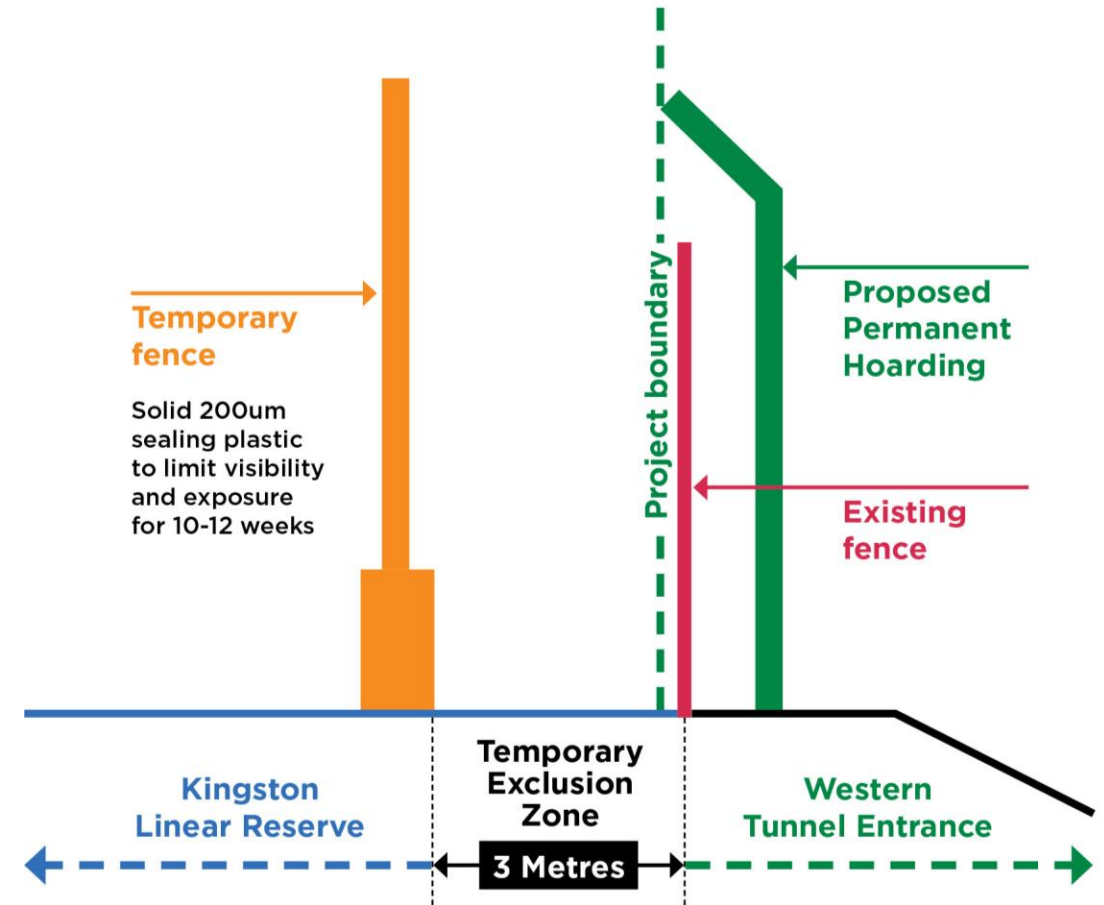
Current works

Site establishment

- Tree and vegetation removal completed early-February
- Temporary fencing installed Kingston Linear Reserve mid-February until mid 2025
- Site leveling and excavation commenced under asbestos conditions and will continue through to May 2025
- Permanent hoarding installation to be completed early-March
- Light vehicle entrance expected to commence late-March and be completed by May 2025



Kingston Linear Reserve | Fence



OFFICIAL

Kingston Linear Reserve | Southern entry temporary changes



Gate

Temporary entrance

Temporary fence

Project boundary fence

Existing fence line

Existing fence to be removed

Kingston Road

TBM Launch Site, Clarinda

Current works | TBM Launch Site

Site establishment

- Tree and vegetation removal was completed early-February
- Earthworks including bund (earth mounds) removal from early-February
- Permanent fencing to be completed March 2025
- Mobilising of plant equipment and construction works through 2025
- Activities include
 - Installation of Bentonite Plant,
 - Piling,
 - D Walls



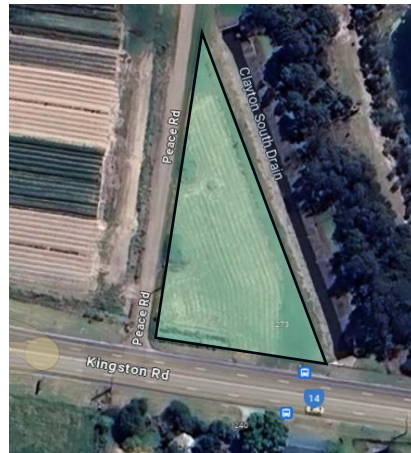
Clarinda Network Support Facility

Under way

- Earthworks seeds to be planted

Planned works from February

- Electrical works
- Handover to United Energy to complete the works



Forward program

Heatherton | Works lookahead

OFFICIAL

Works	2025											
	Feb	Mar	Apr	May	Jun	Jul	Aug	Sep	Oct	Nov	Dec	
Kingston Road												
Utility relocations	█	█	█									
Permanent traffic signal commissioning		█										
Road modifications – Old Dandenong Road / Kingston Road intersection works (tbc)					█	█						
Eastern heavy vehicle entrance (tbc)							█	█	█	█	█	█
Elder Street Sth, Henry Street, Old Dandenong Road and within site (near Dingley Bypass)												
Utility relocations	█	█	█	█	█							
Network support facility (NSF)												
Building construction	█	█	█	█	█	█	█	█				
Fit out												
Eastern tunnel entrance												
Excavation & steel strut installation		█	█	█	█	█	█	█				
Base slab concrete pours									█	█		
Western tunnel entrance												
Site establishment	█	█										
Site levelling and excavation		█	█	█	█							
D- walling					█	█	█	█	█	█	█	█



Tunnels South works package (Suburban Connect)
 Initial Works and Early Works package (Laing O'Rourke)

TBC

NOTE: timing is indicative and subject to change



Clarinda | Works lookahead

Works	2025											
	Feb	Mar	Apr	May	Jun	Jul	Aug	Sep	Oct	Nov	Dec	
Clarinda TBM launch site												
Site establishment												
Tunnel Access Structures (TAS) construction <ul style="list-style-type: none"> • Piling • D-wall • Jet Grouting • East and West Shaft excavation 												
Kingston Road												
Minor works around U-turn including lighting installation												
Water Connection – westbound lane closure, approx. 2 weeks												

NOTE: timing is indicative and subject to change

Other business

Community Reference Group | Dates

Five meetings to be held in 2025 at two-month intervals. Confirmed dates:

- 18 February
- 29 April
- 24 June
- 19 August
- 21 October

Kingston Walk Linear Reserve hoarding | Design options

Option 1



Option 2



Option 3



Kingston Walk Linear Reserve hoarding | Upcoming engagement

- Postcard update to be distributed to Nicholas Grove and Golf View Road residents in coming weeks
- Will ask community to choose their preferred design via a QR code
- Hoarding design will be installed along the western boundary of the Stabling Facility in the Kingston Walk Linear Reserve
- Installation from April (tbc).



Questions

