



Community Liaison Group Meeting

4 September 2025

In partnership with



Agenda

Time	#	Item detail	Owner
5.30pm	1	Welcome, introductions and apologies	Chair (Kim Jordan)
5.35pm	2	Actions update	All
5.40pm	3	MRPV update <ul style="list-style-type: none"> • Completions roadmap 	Shane D'Rozario Douglas Morris
5.55pm	4	Community engagement update	Mario Urban, Community Engagement Manager CPBJH JV
6.05pm	5	Construction update	Mario Urban, Community Engagement Manager CPBJH JV
6.15pm	6	Preparing for road opening: <ul style="list-style-type: none"> • Landscaping • Interpretive Artwork 	Tim Spawton, Environment Manager CPBJH JV
6.35pm	7	BREAK	All
6.50pm	8	Preparing for road opening: <ul style="list-style-type: none"> • Honorary naming • Freeway Control Centre/Incident response 	Transurban
7.15pm	9	Member questions	All
7.30pm	10	Meeting close	All

Actions update

Name	Owner	Action	Status and update
ALL1	MRPV WGTP	State to follow up on why Arden Structure Plan was removed from VPA work program and provide update on what actions/works have been undertaken as part of the Moonee Ponds Creek Implementation Plan.	Information sent to members in an interim email on Thursday 28 August 2025.

WGTP MRPV Update





WGTP MRPV

Completions roadmap

In partnership with



Completing 'Construction'

West Gate Tunnel 'Contract' Completion

- Building & Commissioning the asset
 - Roads
 - Bridges
 - Shared Use paths
 - Open Space
 - Traffic Signals and Electronic Road signs & Devices
 - Tunnel 'Specials' – Fire, Ventilation
 - Buildings (Freeway Control Centre, Vent Buildings, Maintenance Building)
 - Testing and Commissioning the Asset systems
- Progressive 'Returned Works' (To Utility owners, Councils, DTP, Rail Operators)
- Compiling Defects Lists
- Return Temporarily Occupied Land

M80 interchange



Hyde Street ramp



Opening

- Land Declaration – complex survey and plan preparation for declarations and concession lease well underway
- Asset Opening
- Community & User Engagement & Education
- Network Readiness for Opening



Community & Asset User Activities

- Co-ordinated strategy involving MRPV, DTP and Transurban
- Focus includes all road/path users, user education, way finding, tolling fees and truck restrictions
- Broad range of work stream strategies including: user education, advertising, infrastructure naming, local community engagement, stakeholder engagement, air quality and tunnel operation, on-road communications, opening events, brand and collateral, digital and media
- Major Opening Event



Network Readiness for Opening

- Intelligent Transport System integration (DTP & TU Control Centres)
- Network Performance
 - Optimising 116 Existing Signal sites
 - Additional vehicle detectors on Princes Freeway
 - Day 1 Hypercare



Network Readiness for Opening

- Active Transport – Key interfaces with surrounding network reviewed
 - Improvements in various Stages of implementation
- TAP initiatives – Managing Traffic in North & West Melbourne



Community engagement update



Community engagement

Item	Outcome
West Gate Freeway full outbound closure – 29 August - 1 September	<p>Strong engagement with community, businesses and freight industry with extra measures put in place to assist communities most affected by closure including:</p> <ul style="list-style-type: none"> • Letters sent to residents on Francis Street and Moore Street advising of expected increases in traffic and truck activity due to curfew exemptions during the closure. • Letters sent to residents and businesses on detour routes advising of expected increase in traffic. • VMS signage on Francis Street to guide heavy vehicle operators to head north at Williamstown Road and on to Geelong Road. • VMS signage on Blackshaws Road to mitigate speed and noise. • Respite offered to residents along Blackshaws Road.
Site extension and occupation of 8 car parks until September at Harris Street & Whitehall Street	The JV are working closely with businesses who are directly impacted to ensure they are well informed on the timeframes regarding the upcoming sewer works and short-term overnight impacts to business roller doors and Whitehall Street lane impacts.
Hyde Street and Somerville Road intersection signalling works planning	The JV are working closely with businesses located around the intersection to start advising of upcoming planned works and keep them updated.
Informal community garden bed relocation – Watson Street, South Kingsville	The JV worked with a resident in charge of 'informal community garden' ahead of utility services investigations and offered to relocate garden beds and replace plantings once works were complete.

Construction update



Community Liaison Group Meeting: 4 September 2025

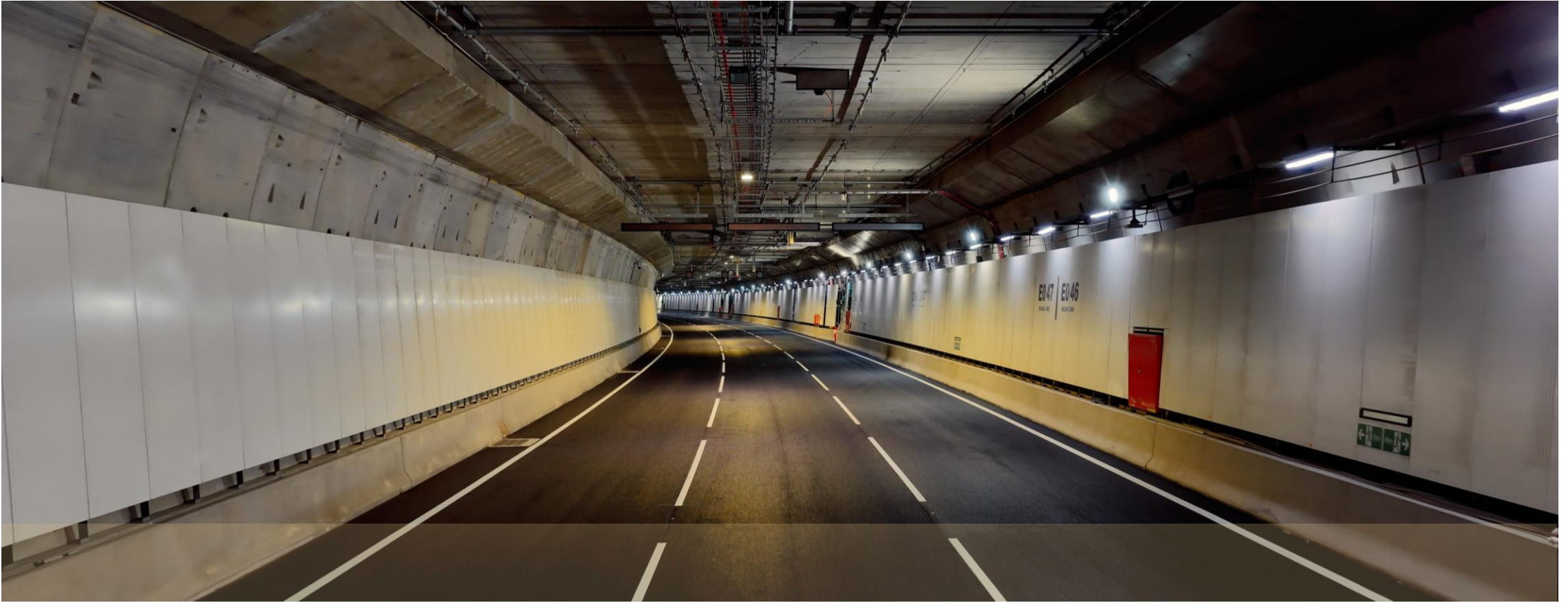
West Gate Freeway



Southern outbound portal



Tunnels



Northern portal



Footscray Road





Preparing for road opening



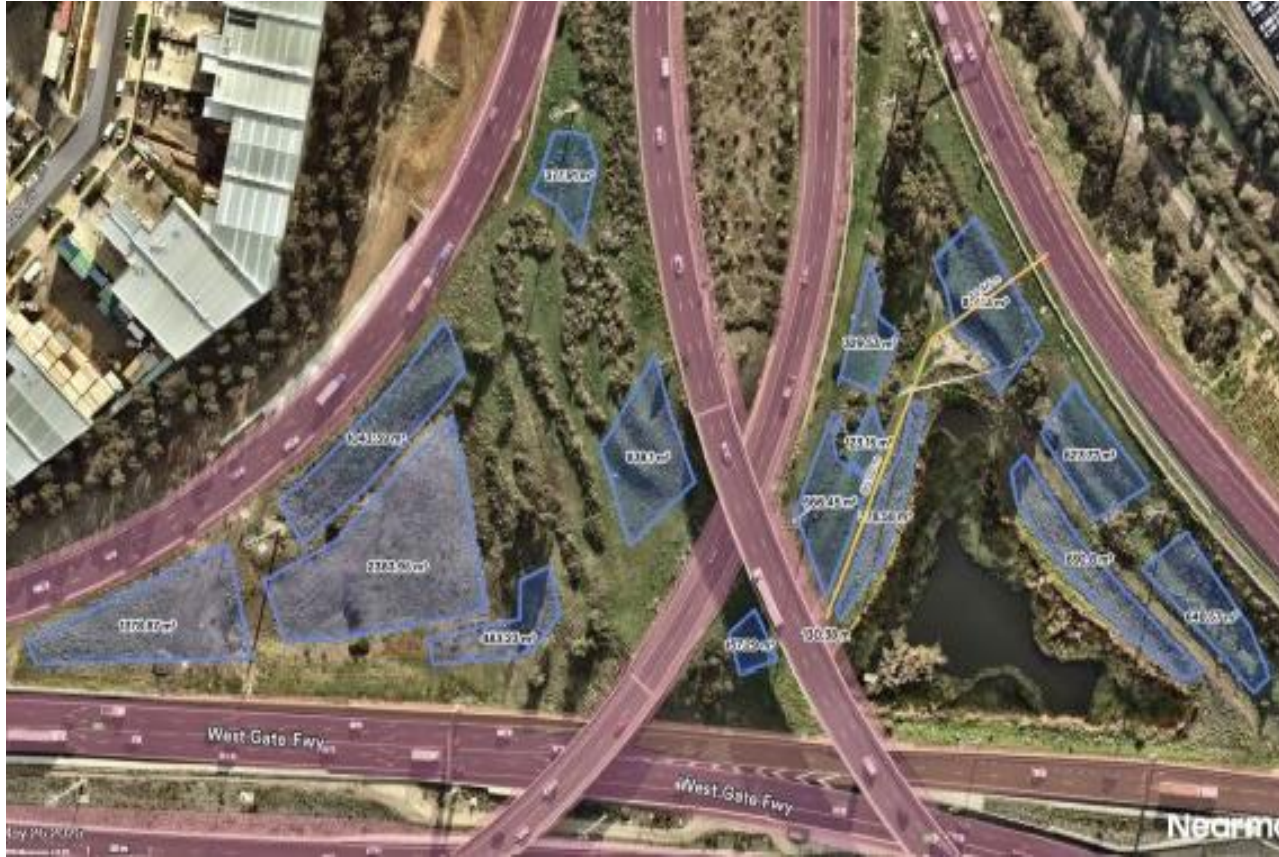
CPBJH JV

Landscaping

In partnership with



West zone



Northern portal



East zone



Offset trees – Hobsons Bay City Council



Offset Trees – Stony Creek



Landscaping maintenance





CPBJH JV

Interpretive artwork

In partnership with





Pebble Structures

Spear

Hill

Cave

Hanging Cave

Wearing fish traps

Basket

Red netting

Hammocks

Pecan Skin Creek

Cultural Artifacts

Traditional Life

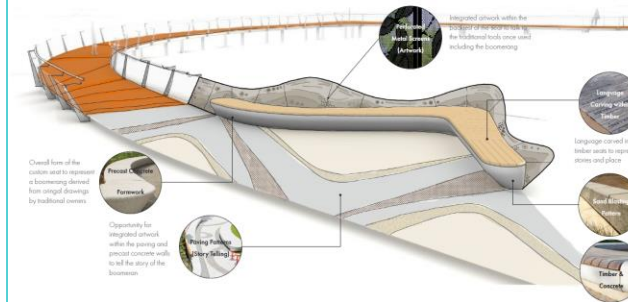
Hammocks

Hanging Cave

Lovers

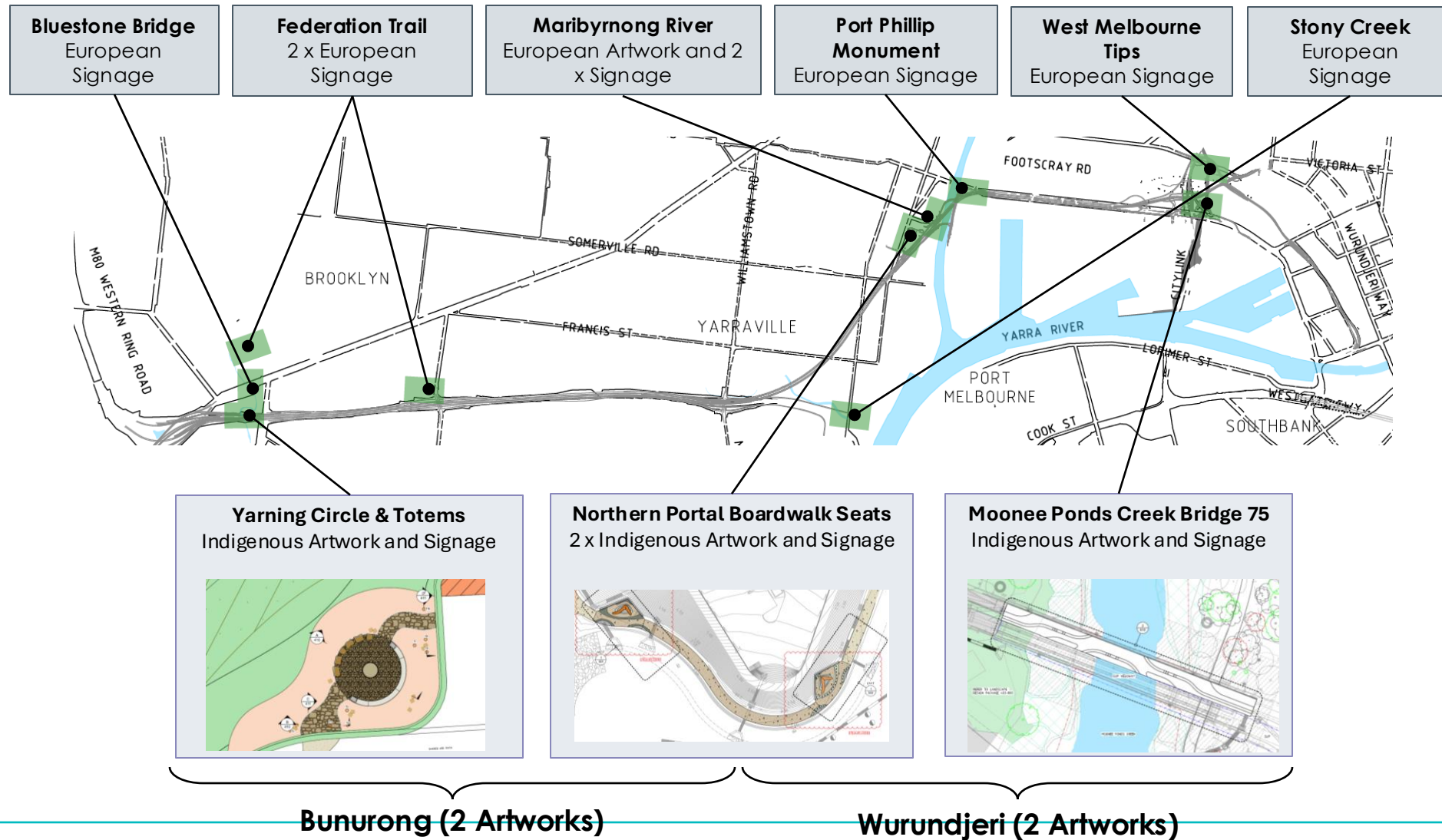
Purpose: Why are you telling this story? What is this issue, how are things now, and what change do you want to make?

- Reconciliation
- View the land
- Integration with land and re-use
- Story of the land – Kororito creek, Moonee ponds creek, Maribymong River, Stony Creek
- Local Identity
- Indigenous groups
- Copyright ownership
- Language “our story”

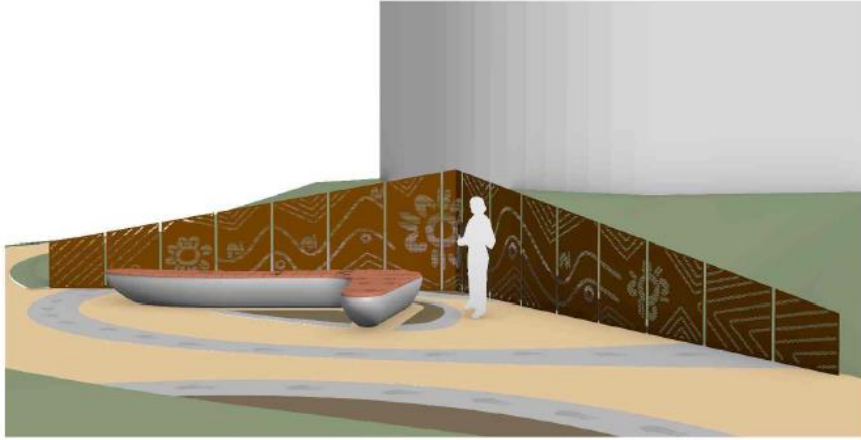


Community Liaison Group Meeting: 4 September 2025

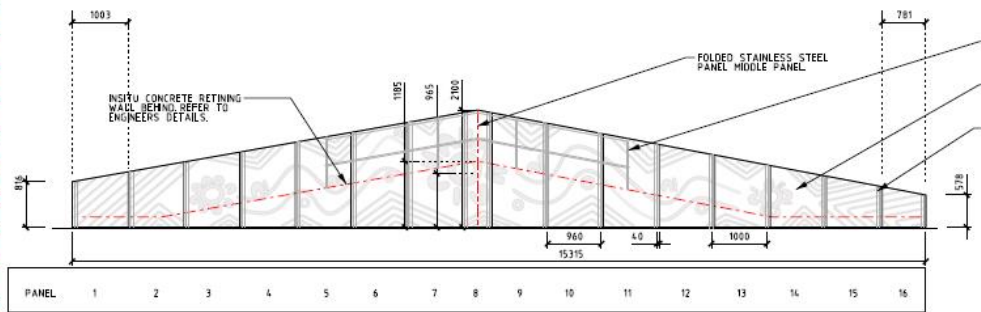
Final Interpretive Arts Package Elements



Northern Portal – Maribyrnong River

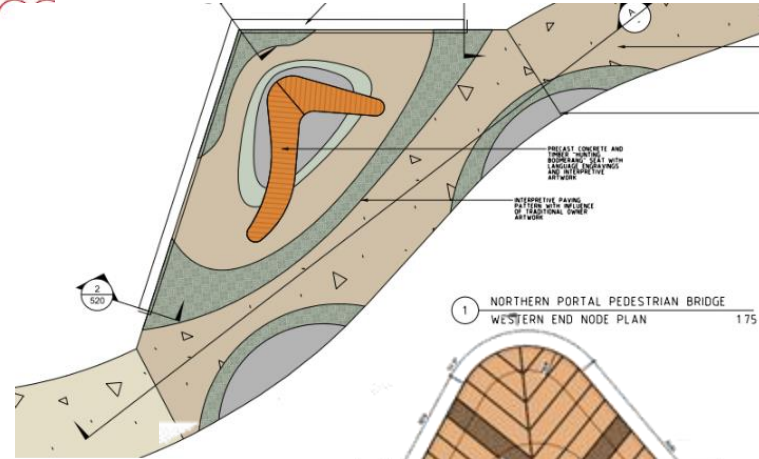


1 EASTERN INTERPRETATIVE SCREEN
DIAGRAM – DESIGN INTENT ONLY NTS



2 EASTERN INTERPRETATIVE SCREEN
UNROLLED ELEVATION 1:75

LPB/M-RFI-030582



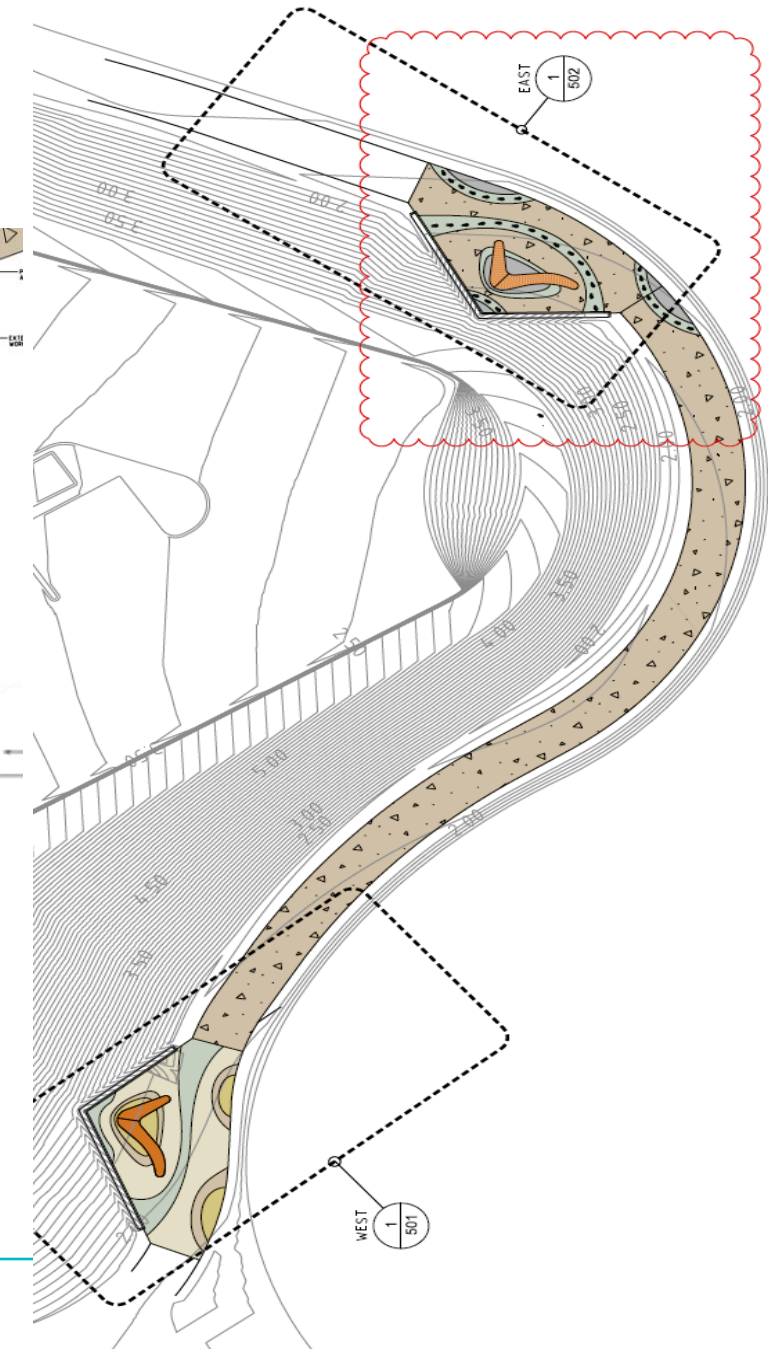
1 BLASTED CONCRETE ARTWORK CONCEPT
SKETCH NTS



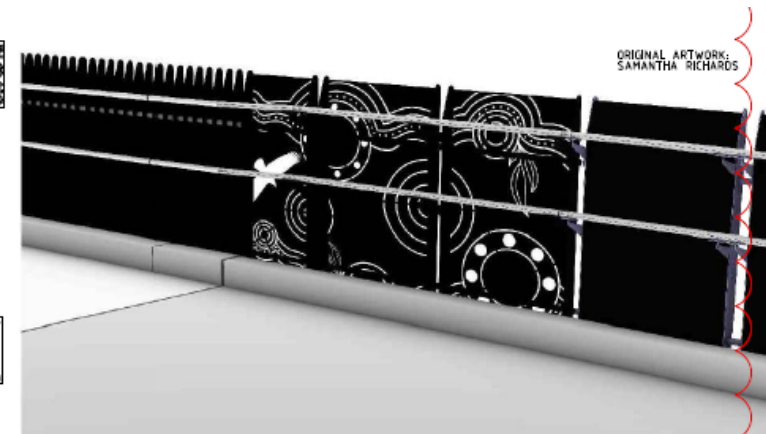
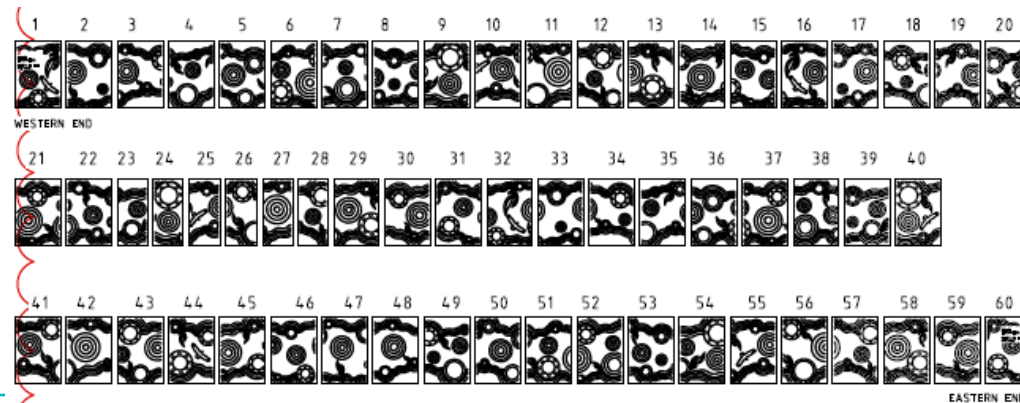
2 DIGITAL DESIGN ORIGINAL ARTWORK
SKETCH NTS



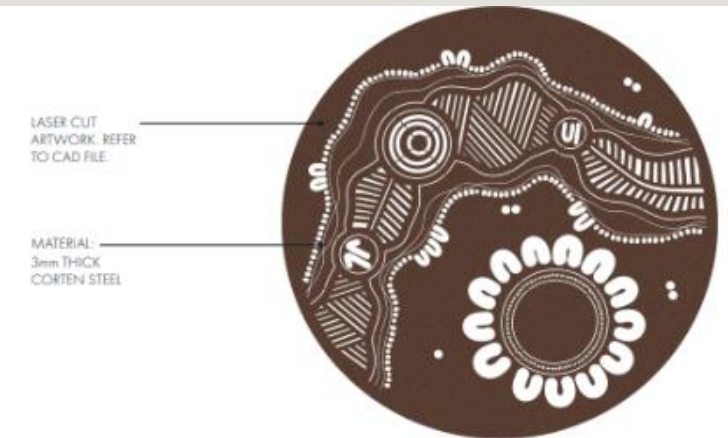
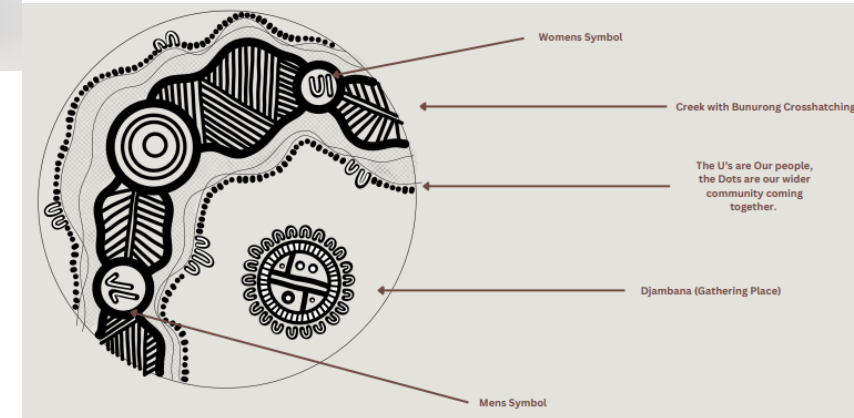
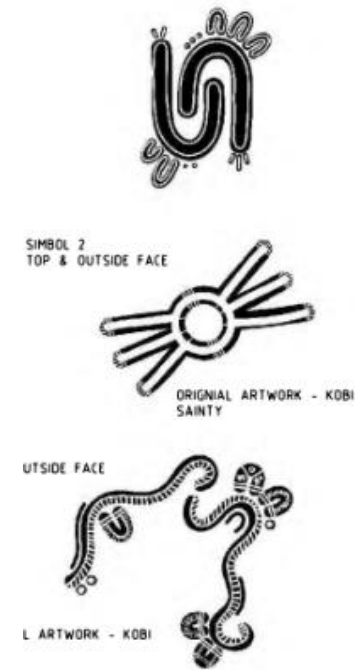
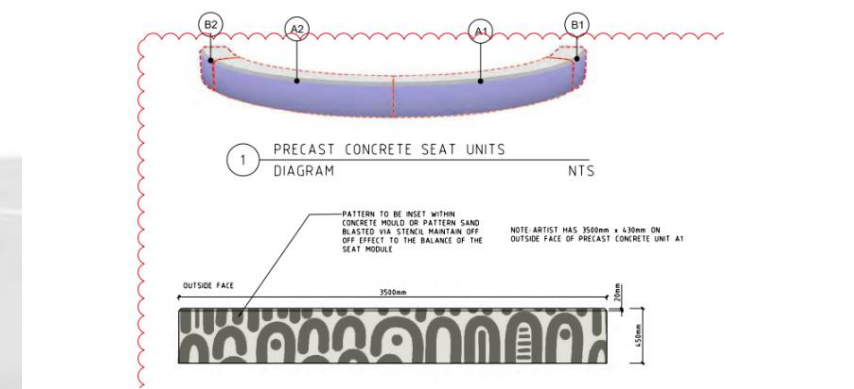
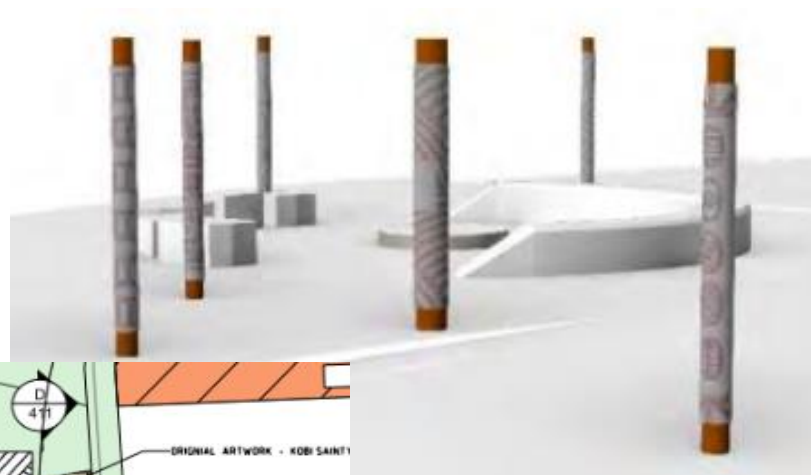
3 BLASTED CONCRETE ARTWORK TEMPLATE
NTS



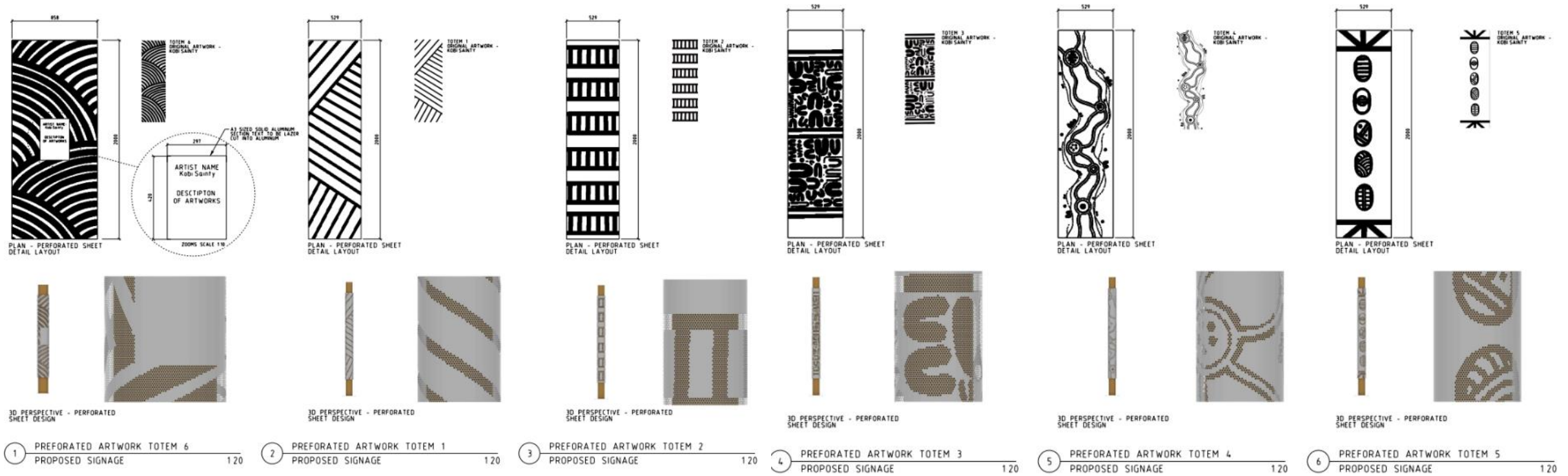
Moonee Ponds Creek



Kororoit Creek



Kororoit Creek continued





Break – 15 minutes

In partnership with





Transurban

Honorary naming

In partnership with



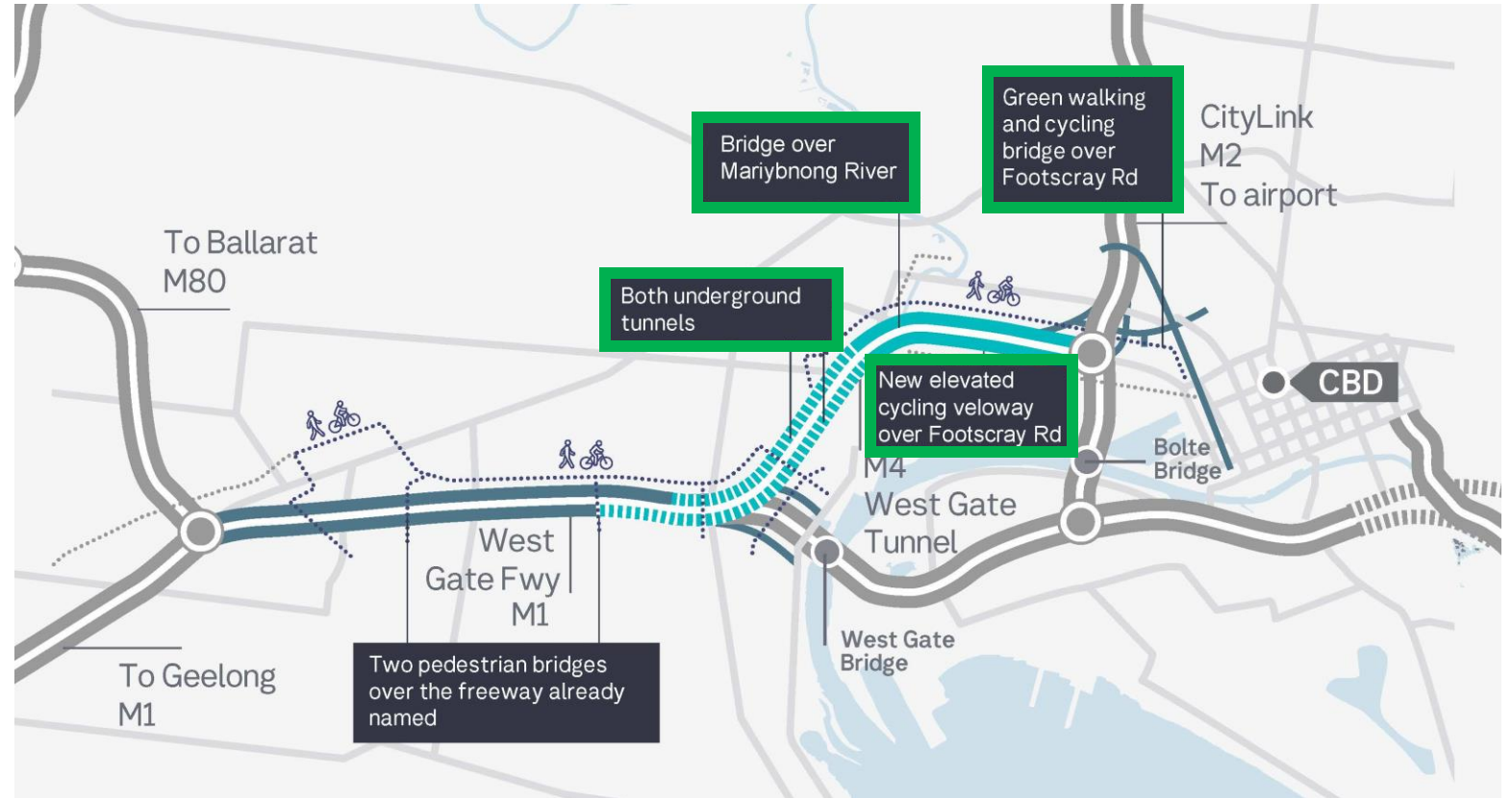
Honorary naming update

What we've been up to

- Consulted with Traditional Owners (Wurundjeri Woi Wurrung and Bunurong)
- Community Liaison Group (CLG) workshop session
- Council input via Mayors, councillors, and officers
- Broader community – 3,400+ public submissions
- Active Transport workshop session
- Schools outreach

What's next

- Emergency Services and operational review
- Ongoing engagement with Traditional Owners
- Endorsements & Geographic Names Victoria approval
- Explore additional local naming opportunities





Transurban

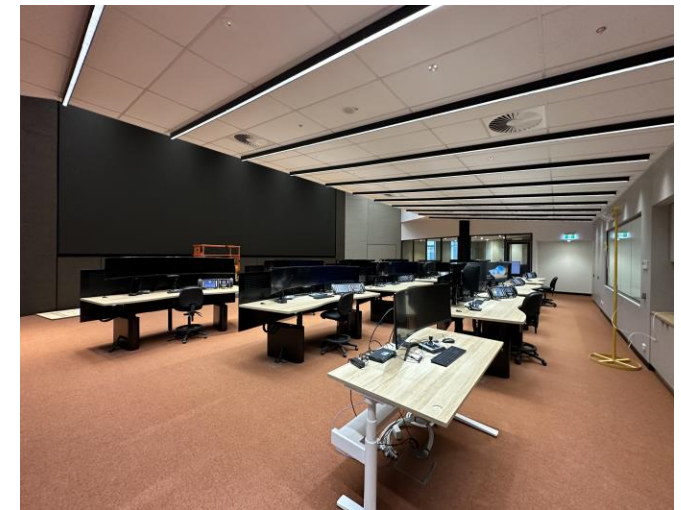
Freeway Control Centre

Incident management and response

In partnership with



Transurban Freeway Control Centre



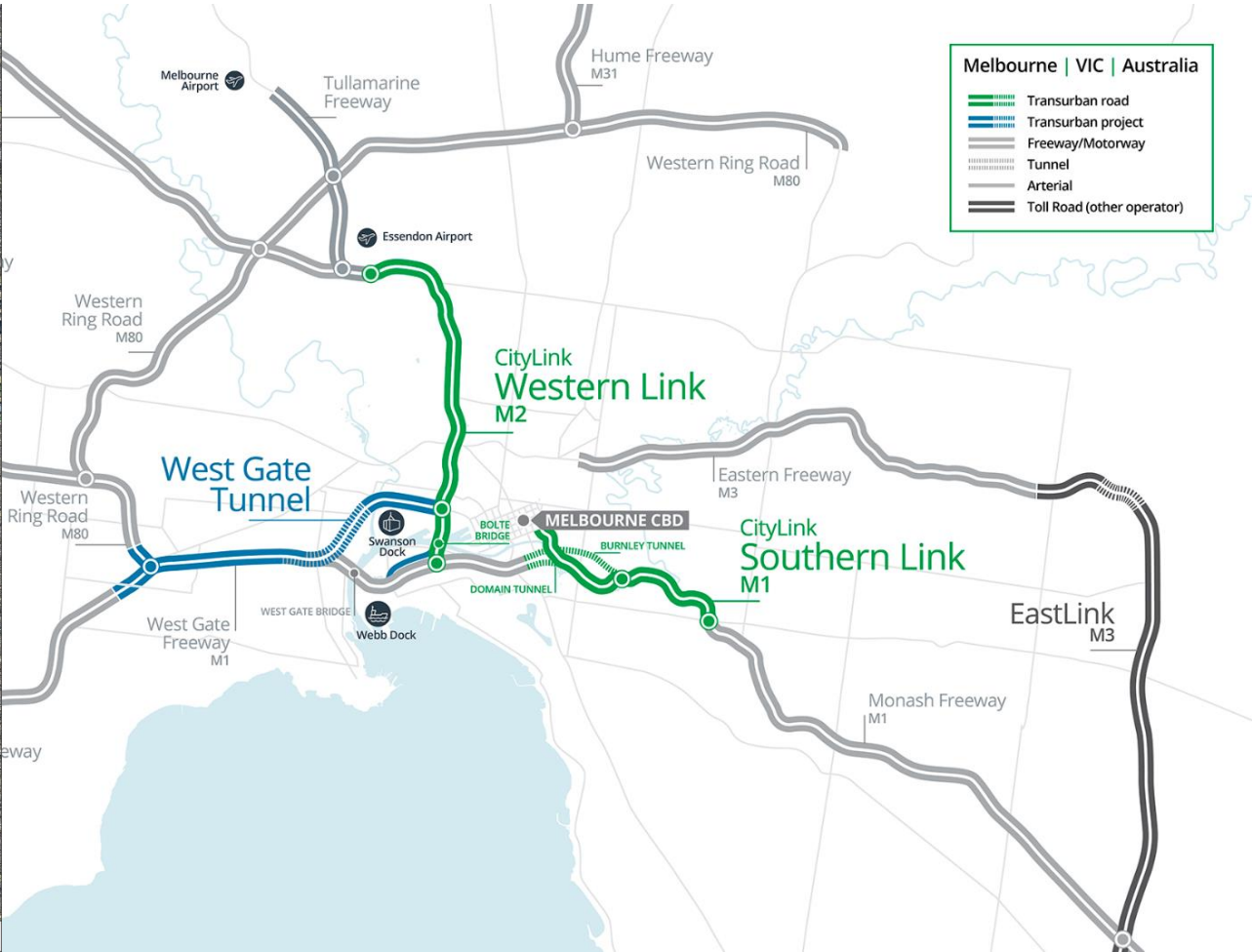
Operating the West Gate Tunnel



- The M4 West Gate Tunnel is a toll road and will be operated by Transurban until 2045.
- West Gate Tunnel and CityLink will be managed by Transurban, as one integrated road network from the new Freeway Control Centre to optimise road operations.
- Transurban will continue to be responsible for incident response and scheduled maintenance works on West Gate Tunnel after project completion.



Incident management area and response



Incident response across the network

Seven Truck-Mounted Attenuators (TMA)

- Can withstand 100km/h rear strike
- Able to shunt up to 20 tonne
- Arrow board to warn motorists
- Air horns
- Can seat up to 3 occupants inc. driver

Seven Tow Trucks

- 4 tonne tow capability
- Can seat up to 7 occupants and driver
- Can tow two vehicles at once



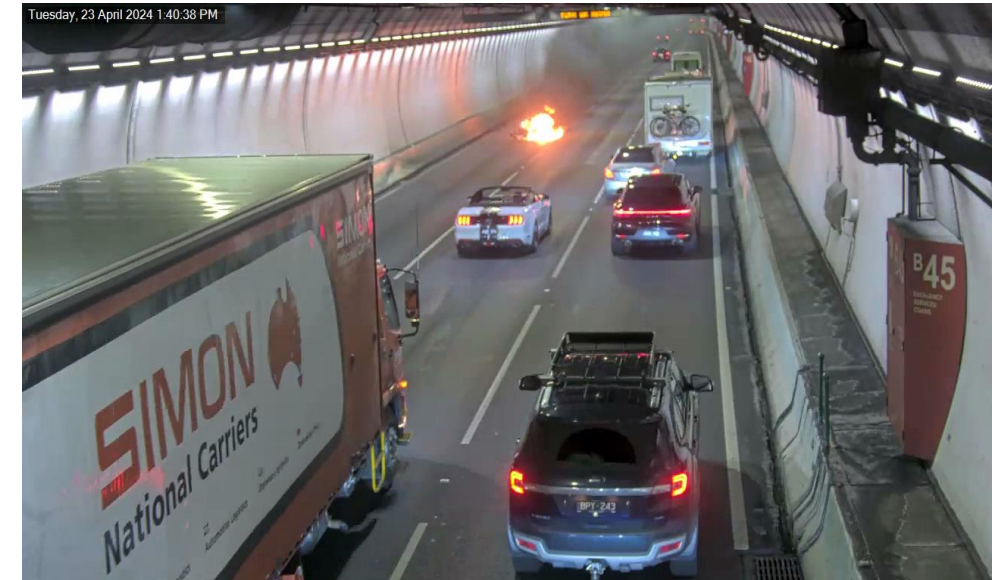
Incident response

April 2024 - Single Vehicle Fire - Motorcycle

- A motorcycle travelling in the left lane of the Burnley Tunnel caught fire
- Rider jumped off bike and fled from the scene, exiting the tunnel through egress tunnel
- The tunnel was briefly closed, smoke extraction was initiated, emergency services were alerted, and fire suppressant deluge was dropped, all within 45 seconds from detection

Response Time: 4 minutes, 24 seconds

Clearance Time : 32 minutes



Member questions





Thank you and close

Next meeting: 16 October 2025

In partnership with

