



New lights over the bridge connecting to CityLink

Community Update

AUGUST 2025



Orange poles light up Docklands

The orange feature lights of the new bridge linking CityLink to the West Gate Tunnels have been switched on following a successful testing and commissioning phase.

The lights were turned on during the first week of May, starting with the poles on the south side of the bridge, followed by the lights on the north side a few weeks later. These lights will now remain on except during works.

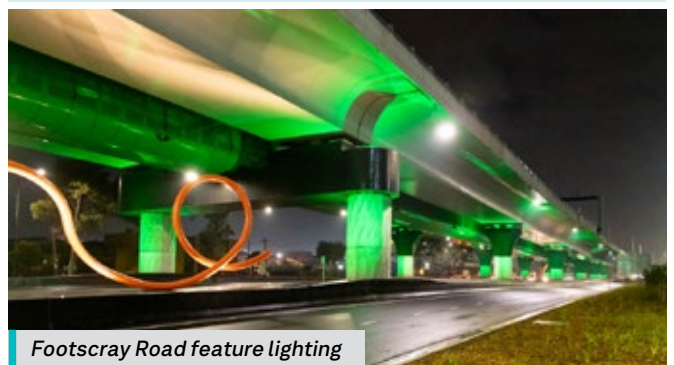
The 132 lights in Docklands, some up to 14 metres tall, mark the end of the project at the city boundary, while the matching 15 lights at the M80 interchange signify the beginning of the project in Melbourne's west.

The design of the undulating poles gives the effect of a net as motorists drive past. The chosen colour for the light poles is also a nod to other key CityLink architectural features, the 'cheese stick' and 'zipper', blending the colours of red and yellow to make orange.

Driving along Footscray Road is also now much brighter with new green feature lighting under the elevated road giving prominence to the orange rope sculptures that twist and turn the length of the elevated road.



- 132 orange poles at CityLink bridge
- 15 orange poles at M80
- Up to 14 metres in height



Footscray Road feature lighting

Sign up for updates at westgatetunnelproject.vic.gov.au

In partnership with





Westbound tunnel portal on the West Gate Freeway

Winter works underway as tunnel portals near completion

If you've driven along the West Gate Freeway or Whitehall Street in Yarraville recently you'll have noticed the three tunnel portals taking shape. The distinctive timber netting structures are now visible, and steel cladding installation is progressing well across the tunnel exits. The West Gate Freeway is also nearing completion, with only finishing touches remaining as we move toward the finishing line in late 2025.

As we progress towards completion in the coming months, we'll be carrying out major works between Millers Road and the West Gate Bridge to complete the outbound tunnel exit and final surfacing of the freeway and ramps.

Starting in winter, these works will include installation of final kerbing, barriers, remaining signage, and the testing and commissioning of the freeway management system that will keep traffic moving.

Once complete, all freeway outbound express lanes – taking you directly to the M80 interchange – will be open to motorists, with permanent freeway barriers in place throughout the length of the West Gate Freeway.

Plan ahead and allow extra time to complete your journey. For more information visit bigbuild.vic.gov.au/disruptions

New wetlands taking shape

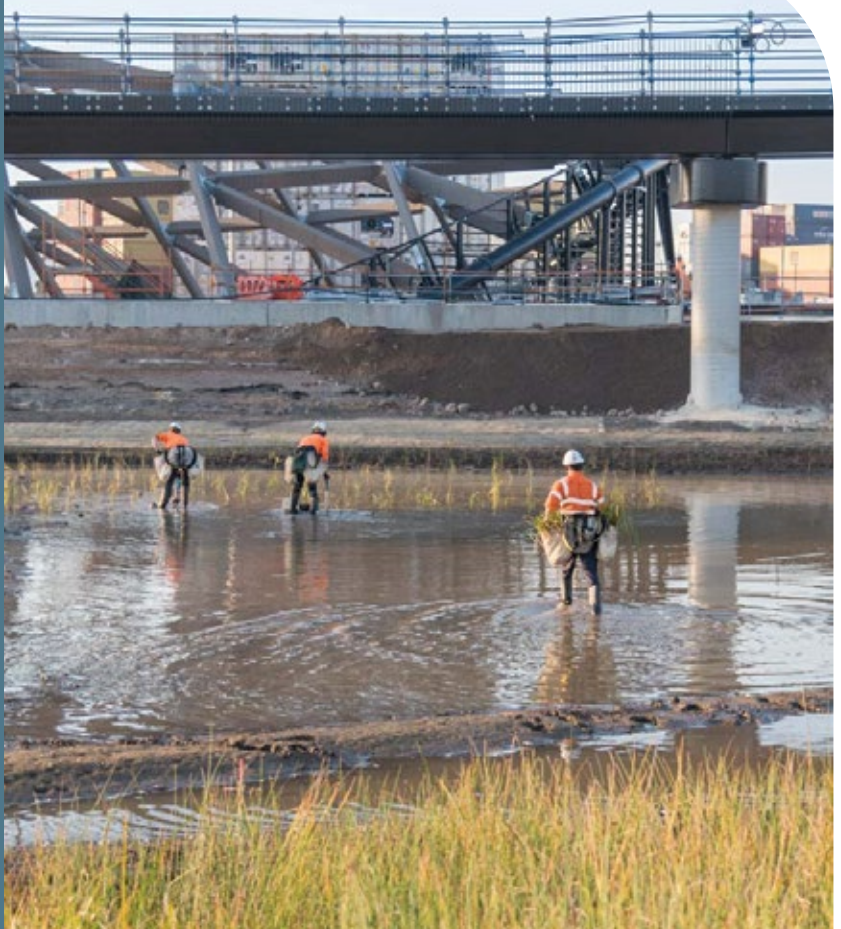
The future wetlands on Whitehall Street next to the tunnel portal are taking shape.

We are turning former industrial land into green open spaces, providing a naturalised environment that links directly to Yarraville Gardens via a new walking and cycling path over Whitehall Street and down to the Maribyrnong River.

After excavating the basin for the wetlands and installing the rock base, landscapers have been on site planting the reed and plant varieties that will vegetate the wetland and provide a food source for a wide variety of wildlife.

The wetlands will naturally fill with water from rain and surface runoff.

Landscapers vegetate the base of the wetlands





New walking and cycling bridge

New green bridge opens over Footscray Road

A striking new walking and cycling bridge is now open over Footscray Road, making it easier and safer to get around by bike or on foot.

Suspended from two 43.5-metre-steel pylons with feature lights, and inspired by the design of the West Gate Bridge, this 220-metre-long structure carries riders and pedestrians diagonally over the busy road, removing the need to cross two major intersections.

The new bridge provides a direct connection between the Capital City Trail and Moonee Ponds Creek Trail, creating a more convenient route for commuters and recreational users alike.

This is part of more than 14km of new and upgraded walking and cycling paths being delivered by the West Gate Tunnel Project.

It builds on earlier upgrades in the area, including two new bridges over Moonee Ponds Creek at Footscray and Dynon Roads.

And there's more to come – the veloway, once open later this year will complete a dedicated cycling corridor from Werribee to the city, helping to make riding in Melbourne safer, easier, and more accessible.

BMX track works commence under CityLink

Work is underway to transform the open space around CityLink and Moonee Ponds Creek into new recreational areas for the community.

Once complete, the rejuvenated site will include three BMX pump tracks, a viewing deck over Moonee Ponds Creek, and a shared user path connecting cyclists and pedestrians with the elevated veloway, the Moonee Ponds Creek trail and the Capital City Trail.

We'll also be undertaking extensive revegetation and tree planting, and installing timber and concrete benches to sit and enjoy the new green spaces.



BMX works begin

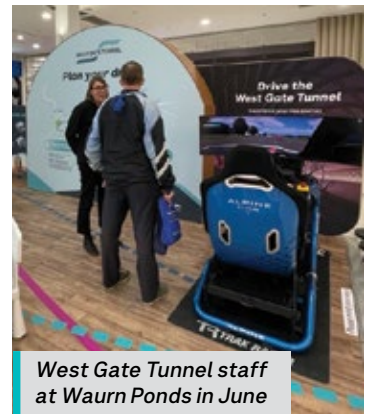
Coming to a shopping precinct near you

Our community roadshow is officially underway as we head out across both metro and regional areas to help Victorians get ready for the opening of the West Gate Tunnel.

Whether you're a commuter, local resident, or just curious about what's coming, our roadshow is a chance to learn more about how the new tunnels and connections will change the way you move around Melbourne.

Come along to test your skills on our driver simulator, explore new travel routes with our journey videos, and chat with the team about how the project is shaping up. There's something for everyone—no matter how you travel.

Keep an eye on our social media channels or check our website for upcoming locations and event details. We'd love to see you there!



West Gate Tunnel staff at Waurin Ponds in June



Explore your journey with new online tool

As the West Gate Tunnel Project moves closer to completion, we've launched a new tool to help Victorians prepare for future journeys using the new tunnels and road connections.

The 'Explore Your Journey' tool gives motorists a chance to plan and see new journeys on the widened West Gate Freeway, the West Gate Tunnel and new ramps and connections designed for quicker and easier travel.

The online tool allows users to explore new travel options via interactive maps, detailed route explainer videos and a freight feature that will be added in coming weeks for truck drivers and logistics companies.

With the tunnel to open by the end of the year, the 'Explore Your Journey' tool has been developed to help you stay informed and prepared for all the new traffic routes and improved connectivity via the West Gate Tunnel Project.

Check it out at westgatetunnelproject.vic.gov.au/drive



Business representatives join us for industry event

Businesses get ready for the West Gate Tunnel

More than 350 business representatives from across the freight, logistics and transport sectors joined us for a special *Get Ready for the West Gate Tunnel* industry event in May.

The event was designed to help businesses plan for the opening of the West Gate Tunnel, with tailored information on how to travel the new road network in various vehicle sizes and classes, the location of toll points and the toll pricing structure, and the No-truck zones that will come into effect in Melbourne's inner west.

The event included presentations and exhibition-style displays, with experts on hand to discuss all aspects of the project.

We're making sure that industry knows about the new connections the project is building directly to the port, along with the No-truck zones to help reduce the number of trucks using local roads from the day the project opens.

Get the latest news as we approach opening on our social media channels:



Instagram

[westgatetunnelproject](https://www.instagram.com/westgatetunnelproject)



Facebook

[WestGateTunnelProject](https://www.facebook.com/WestGateTunnelProject)



YouTube

[@WestGateTunnelProject](https://www.youtube.com/@WestGateTunnelProject)

westgatetunnelproject.vic.gov.au

info@wgta.vic.gov.au

1800 105 105 (call anytime)



For languages other than English please call 9209 0147

Please contact us if you would like this information in an accessible format. If you need assistance due to a hearing or speech impairment, visit relay.service.gov.au

