

# **State Library Station and Town Hall Station Community Reference Group**

Monday 27 October 2025

**Presentation by Cross Yarra Partnership (CYP)**



OFFICIAL: Sensitive

# Agenda

Monday 27 October 2025



Item	Time	Discussion Topic	Owner
1	5.00pm	Town Hall Station site tour	CYP
2	6.00pm	Introductions and Welcome Outstanding Actions and Issues Register	Chris Lovell (Chair)
3	6.25pm	Project wide update	Kate Walshe, CYP
	6.35pm	Metro Tunnel Opening: Summer Start and The Big Switch	Minh Le, MTPO
4	6.45pm	State Library Station update	Melinda Kelly, CYP
5	7.00pm	Town Hall Station update	Dan Young, CYP
6	7.15pm	General feedback and items for future discussion	CRG members
7	7.30pm	Meeting close	Chris Lovell (Chair)

OFFICIAL: Sensitive



# Welcome and introductions

*Presenter: Chris Lovell*

OFFICIAL: Sensitive

# Minutes and actions

*Presenter: Chris Lovell*



## Action items



#	DATE RAISED	ACTION / ISSUE	OWNER	STATUS	CLOSED
C6-4	16 February 2018	Provide further information on precinct waste management strategy including Royston Place design treatment.	CYP	Open – CYP anticipates an update will be available in the next meeting.	
C62-1	11 November 2024	MTPO to invite Scape to present on the OSD at a future CRG meeting.	MTPO	Open - Scape has advised it is not yet ready to present. CYP advised it will distribute any updates available, noting that Scape is a private developer.	
C63-1	10 February 2025	MTPO to distribute key contacts in the operational context (post-project completion) for CBD stakeholders.	MTPO	Closed.	04 August 2025
C64-1	05 May 2025	CYP to review signage at the entrance of Bowen Lane in relation to road and footpath closures for clarity.	CYP	Closed - Signage at the entrance of Bowen Lane has been reviewed for clarity.	04 August 2025
C64-2	05 May 2025	MTPO to provide a document outlining the Town Hall station layout and entrances.	CYP	Closed – MTPO has provided maps outlining the layout of the station. MTPO advised the maps are also available online.	04 August 2025
C64-3	05 May 2025	CYP to provide a render of the planned design for the Federation Square entrance to Town Hall Station.	CYP	Closed – CYP has included renders in the presentation for today's meeting.	04 August 2025
C64-4	05 May 2025	CYP to provide an update on legacy artwork at Town Hall Station.	CYP	Closed – CYP provided an update to CRG members via email on 4 June 2025.	04 August 2025
C65-1	04 August 2025	CYP to provide a document indicating where artwork will be placed at the Town Hall Station Federation Square entrance.	CYP	Open - New	
C65-2	04 August 2025	MTPO to confirm if any additional CBD CRG meetings will be required beyond October 2025.	MTPO	Open - New	

OFFICIAL: Sensitive

## Action items

Scape





# Project wide update

*Presenter: Kate Walshe*

OFFICIAL: Sensitive

OFFICIAL: Sensitive





# Opening the Metro Tunnel

Monday 27 October 2025



OFFICIAL: Sensitive





## **Summer Start Early December**

- The Metro Tunnel will open in early December, with passenger trains stopping at all five new stations
- 240 extra services a week will run alongside the existing timetable

## **The Big Switch 1 February**

- Public transport system overhaul with new statewide timetable and over 1,000 extra services each week
- Sunbury/Cran/Pak solely via Metro Tunnel and the Frankston Line returns to the City Loop



# Summer Start

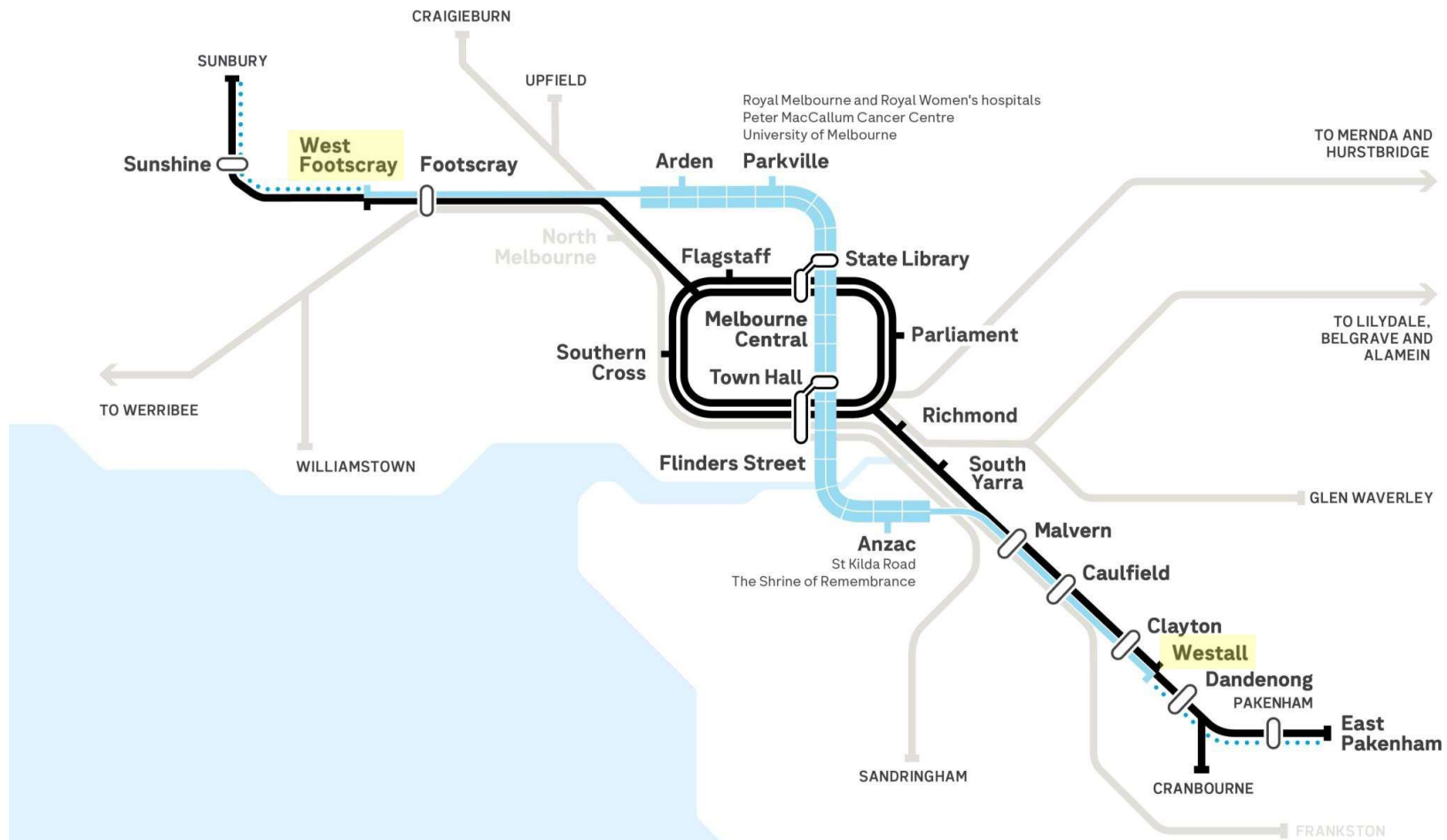
The Summer Start is key to the Metro Tunnel opening safer, smoother and sooner.

Cranbourne, Pakenham and Sunbury corridors will run regular timetable plus **240** extra Metro Tunnel services.

- **Monday to Friday** – services every 20 minutes from **10am until 3pm** between Westall and West Footscray
- **Weekends** – services every 20 minutes from **10am until 7pm** between Westall and West Footscray, every 40 mins from East Pakenham, and every 60 mins from Sunbury.



# Summer Start



OFFICIAL: Sensitive





# The Big Switch

The Big Switch is the moment we **overhaul Victoria's entire train network** by changing every timetable and running 1,000 more services.

It means big changes to commuters – and we'll be communicating with them throughout the coming months.

OFFICIAL: Sensitive



# The Big Switch

- **Cranbourne, Pakenham and Sunbury Line** run exclusively through the Metro Tunnel.
- This delivers turn-up-and-go services on these lines in the peaks.
- **Frankston Line** trains return to the City Loop.
- Services on the **Werribee and Williamston lines** start and end at Flinders Street.





# State Library Station update

*Presenter: Rebecca Smith*

OFFICIAL: Sensitive





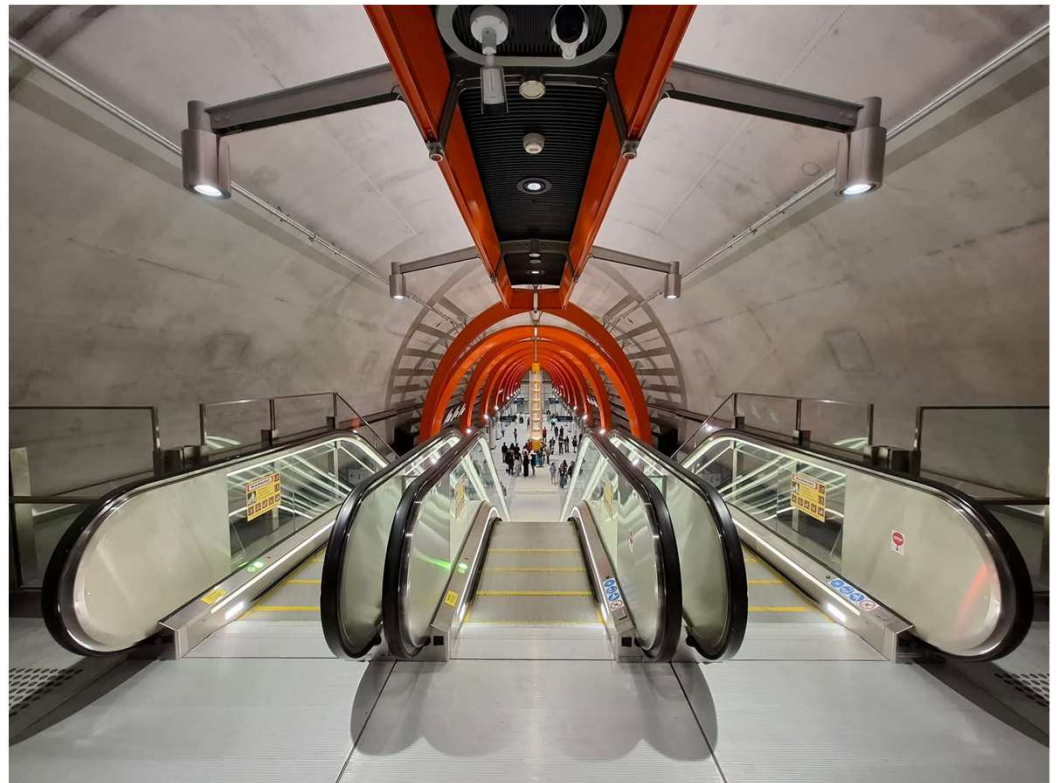


## State Library Station

Station fit out works



- Final fittings at the station are nearing completion, this includes installation of glass balustrades and signage
- Defect works continue
- Final clean of station preparing for Summer Start
- Works associated with retail and advertising space has commenced
- Commissioning and testing and Metro Tunnel opening readiness continues throughout the station.



OFFICIAL: Sensitive

# State Library Station

Station fit out works



OFFICIAL: Sensitive

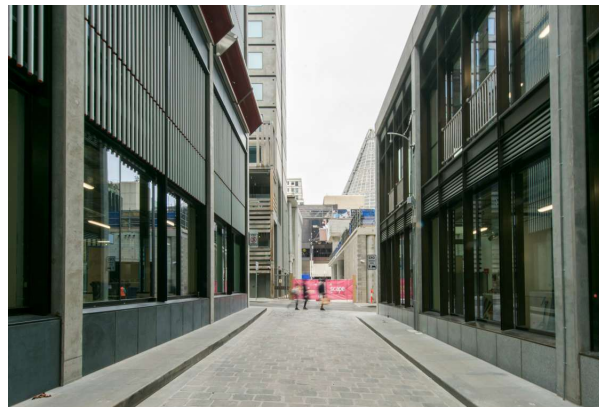
Presenter: Melinda Kelly

## State Library Station

### La Trobe Street public realm works



- Swanston Street resurfacing works were completed in September
- All roads and footpaths around the station including La Trobe Street, Little La Trobe Street and Literature Lane are fully open
- Defect works continue with small satellite sites around La Trobe, Little La Trobe and Swanston streets
- Works on the station's services are complete and handed over.



OFFICIAL: Sensitive



## State Library Station

A'Beckett Street site



- The acoustic shed, capping beam and three-story workers sheds have all been removed from A'Beckett Street
- Following the removal of a shed and other materials requiring use of a crane, A'Beckett Street will reopen to vehicles from Swanston Street
- The northern and southern footpaths on A'Beckett Street between Swanston and Stewart streets will reopen at the same time as the road reopening
- Public realm works, including road reinstatement, line marking and sign installation will be required at Stewart Street in November.



OFFICIAL: Sensitive



# State Library Station

Franklin Street



- Major construction including road reinstatement works, bike lane, footpath paving, traffic signals and landscaping is complete at Franklin Street
- Final artwork will be installed on the eastern building at Franklin Street (west) in November
- A minimal site footprint is in place around the entrance canopy at Franklin Street East and service buildings.



# Questions



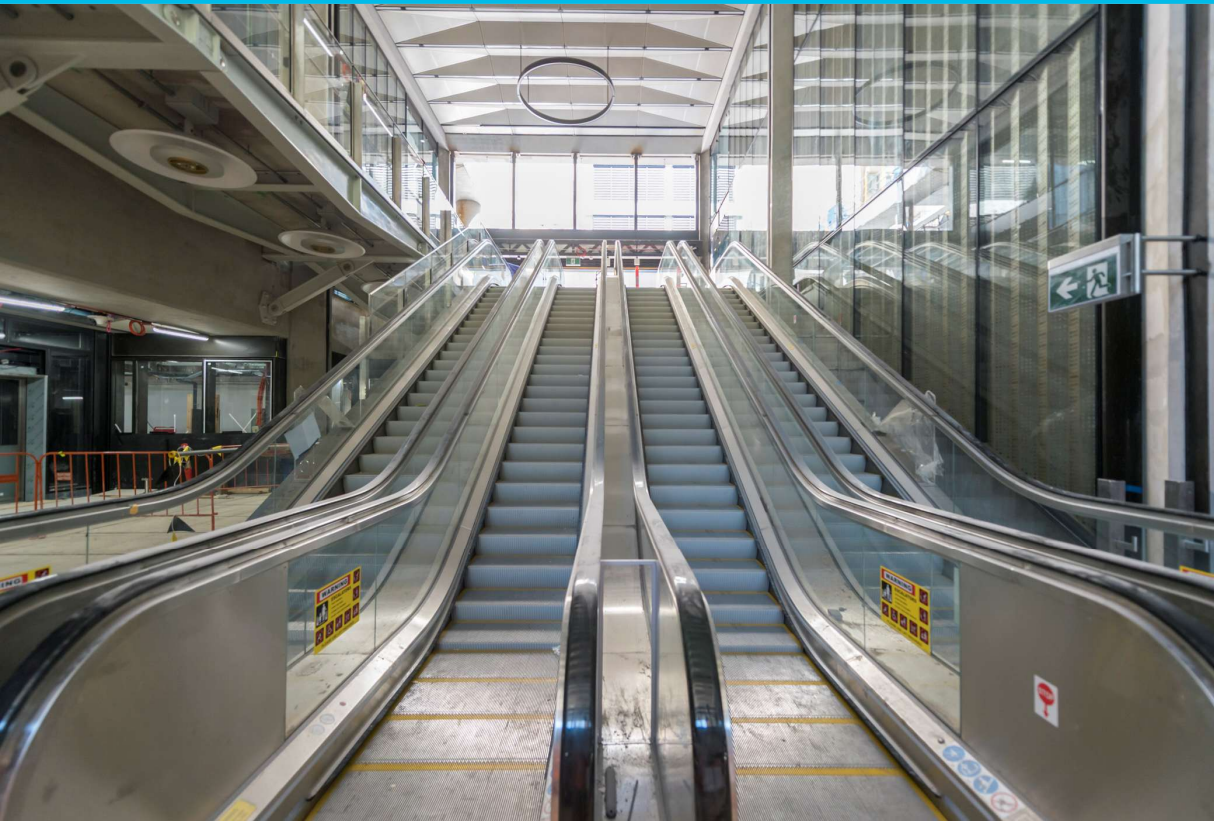
# Town Hall Station update

*Presenter: Dan Young*

OFFICIAL: Sensitive

## Town Hall Station

Flinders Quarter



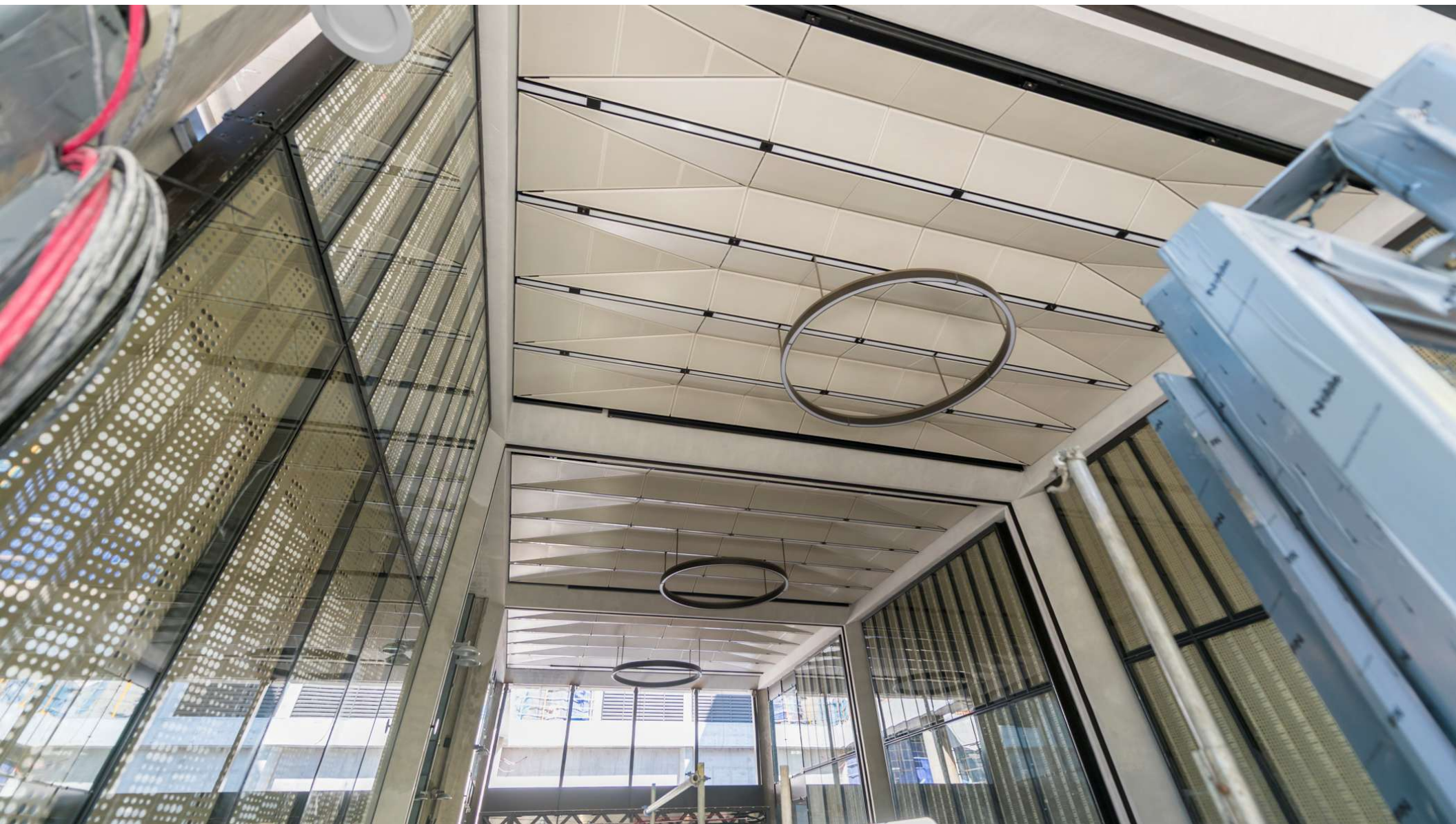
- Works are continuing at the Flinders Quarter site at the B1 and Ground Floor levels
- At B1, glass panelling has been fitted to enclose the future retail spaces, and ceiling cladding has been installed along the walkway to the escalators to B2
- At the entrance portal, the scaffolding has now been removed, unveiling the new architectural features including glass panelling, ceiling cladding and large circular lights
- The Flinders Quarter station entrance will open to the public in early 2026
- Flinders Street eastbound will remain closed until then to facilitate completion

OFFICIAL: Sensitive



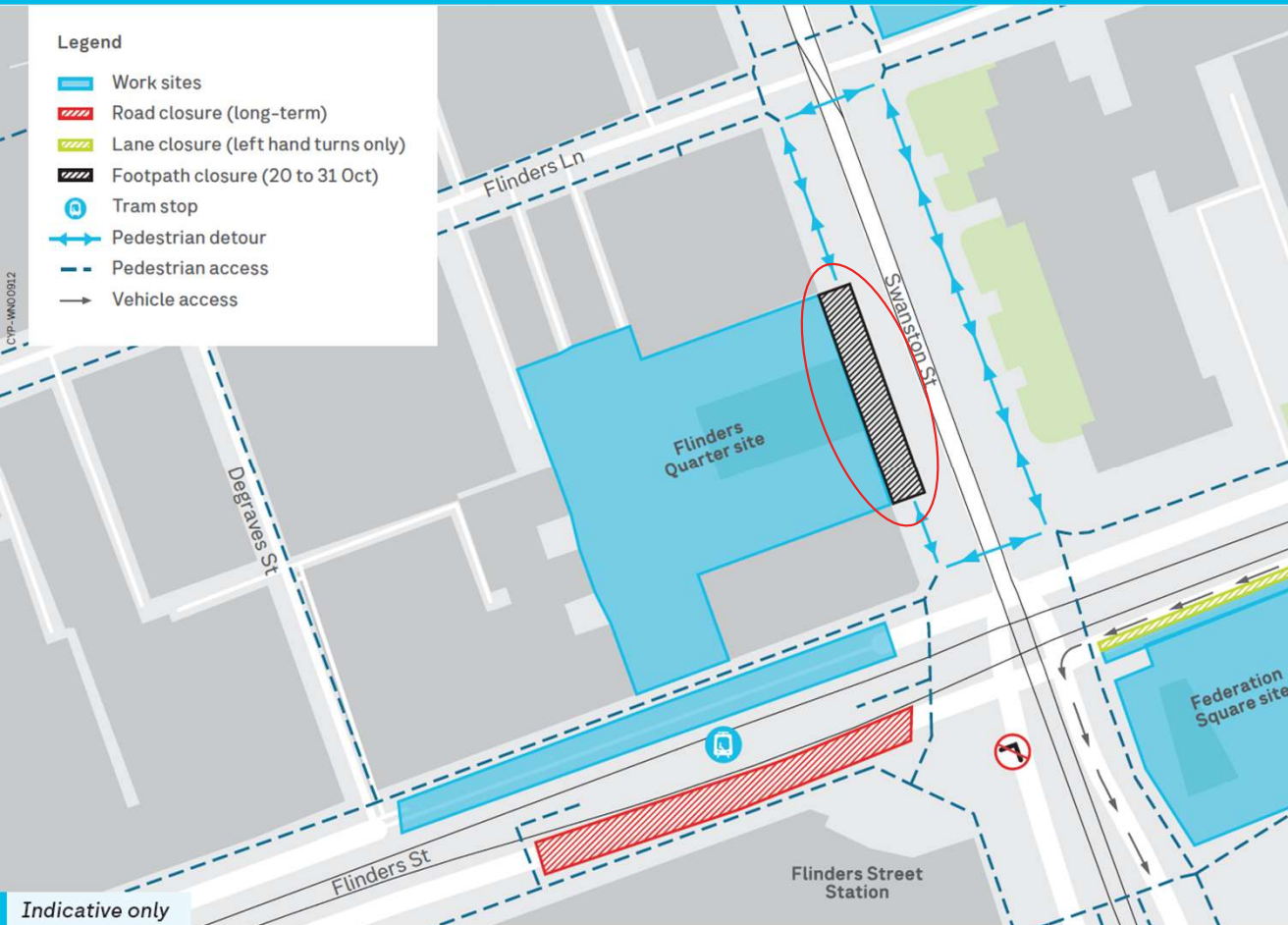






# Town Hall Station

## Swanston Street footpath closure – gantry modifications

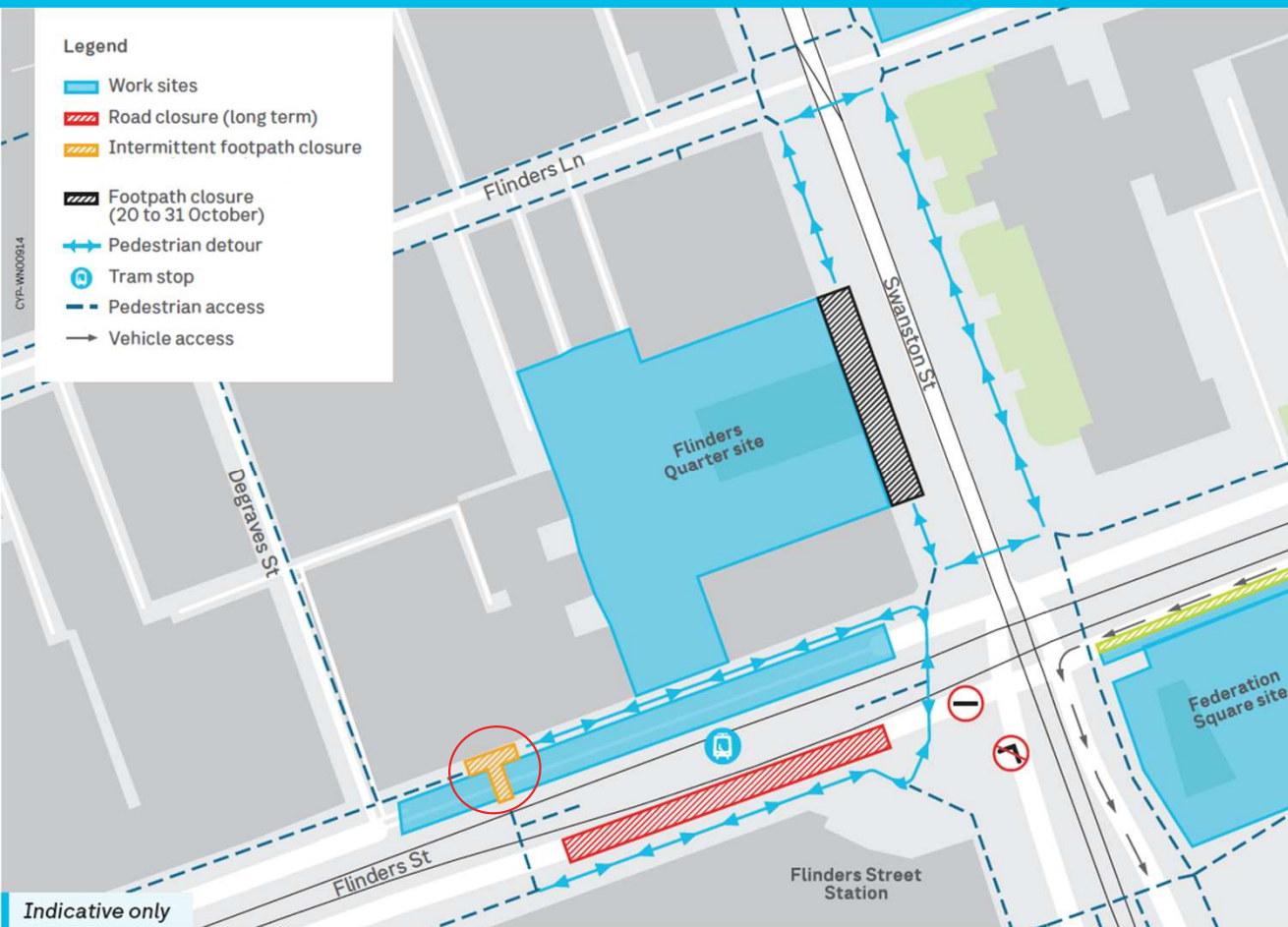


- The Swanston Street footpath is closed until Friday 31 October for gantry modification works
- This includes removing sections of the existing gantry and installing hoarding along the site boundary
- A detour will be in place via the eastern Swanston Street footpath



# Town Hall Station

Flinders Street footpath closure – steel install for awning reinstatement works



- The Flinders Street footpath will be closed from 4:30pm to 2:30am on 28 and 29 October
- This is to facilitate installation of structural steel, ahead of the awning reinstatement at 244 Flinders Street
- Works will begin this week however the footpath will remain open



## Town Hall Station

City Square



- Final reinstatement works are continuing, including paving, minor defect rectifications, filling garden beds with soil, and planting trees
- Reinstatement of The Westin retail area, previously used for site facilities, is underway
- Installation of the Mnemonic Flow (digital interactive version of the original Mockridge Fountain) is underway and will be complete in early November
- Retail fit out is underway at the B1 and B2 levels
- The City Square station entrance will open with Town Hall Station in early December



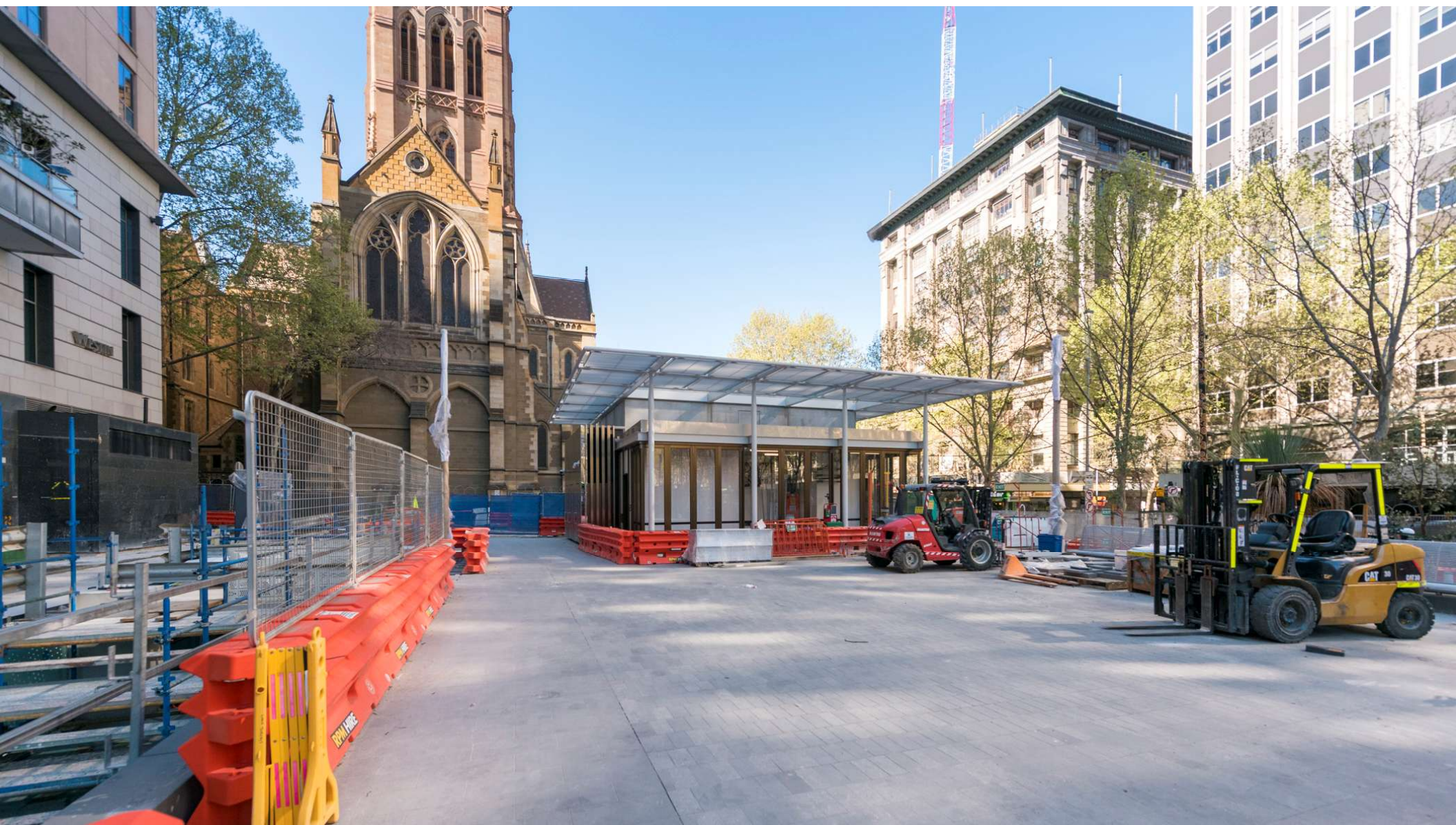
## Town Hall Station

Flinders Lane

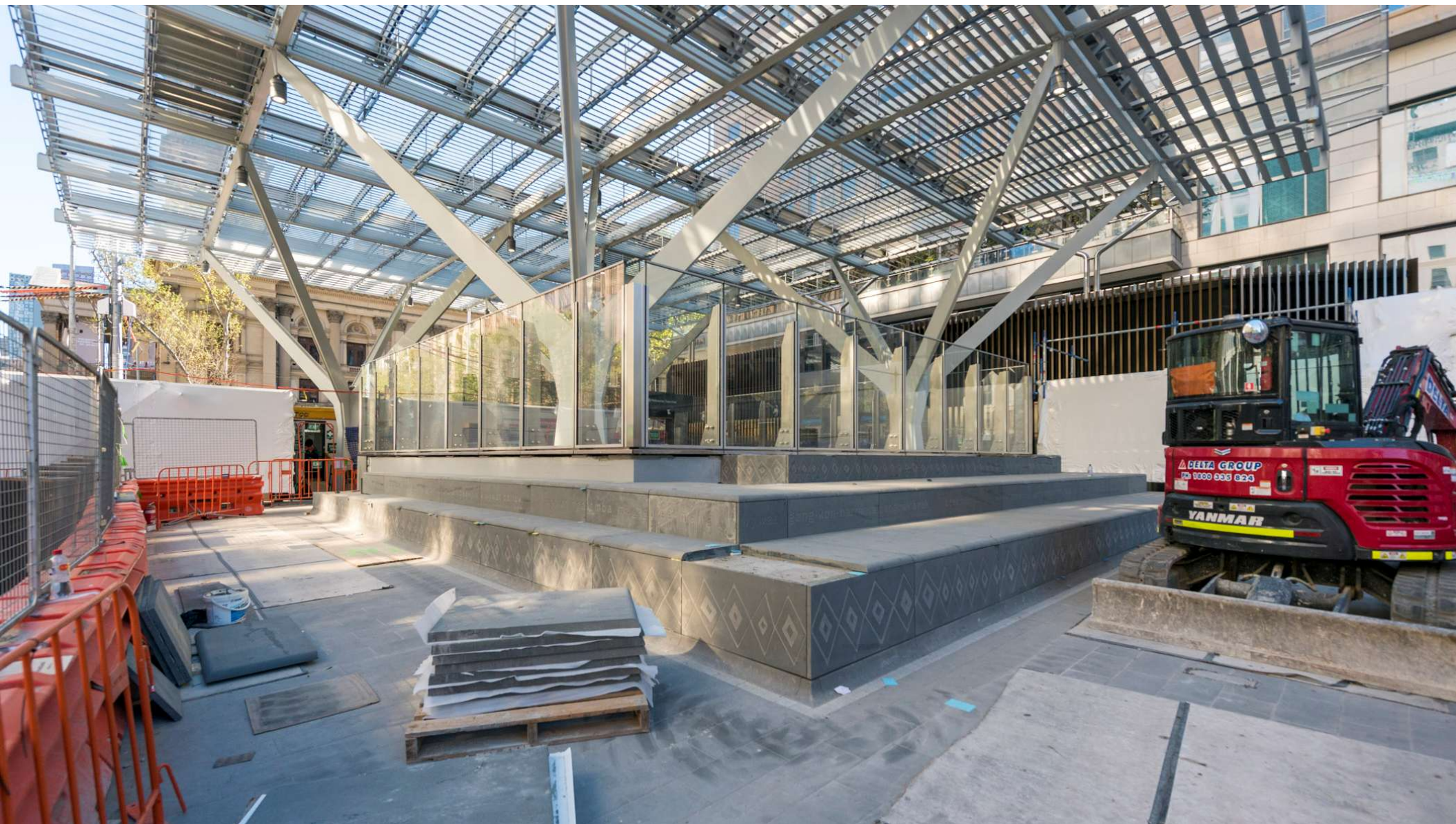


- Reinstatement works are continuing at Flinders Lane
- Works have been completed on the southern footpath in front of St Paul's
- Final reinstatement works are continuing on the northern footpath
- This includes paving the permanent bluestone footpath adjacent to the City Square site
- Flinders lane reinstatement works are on track to be completed in late October

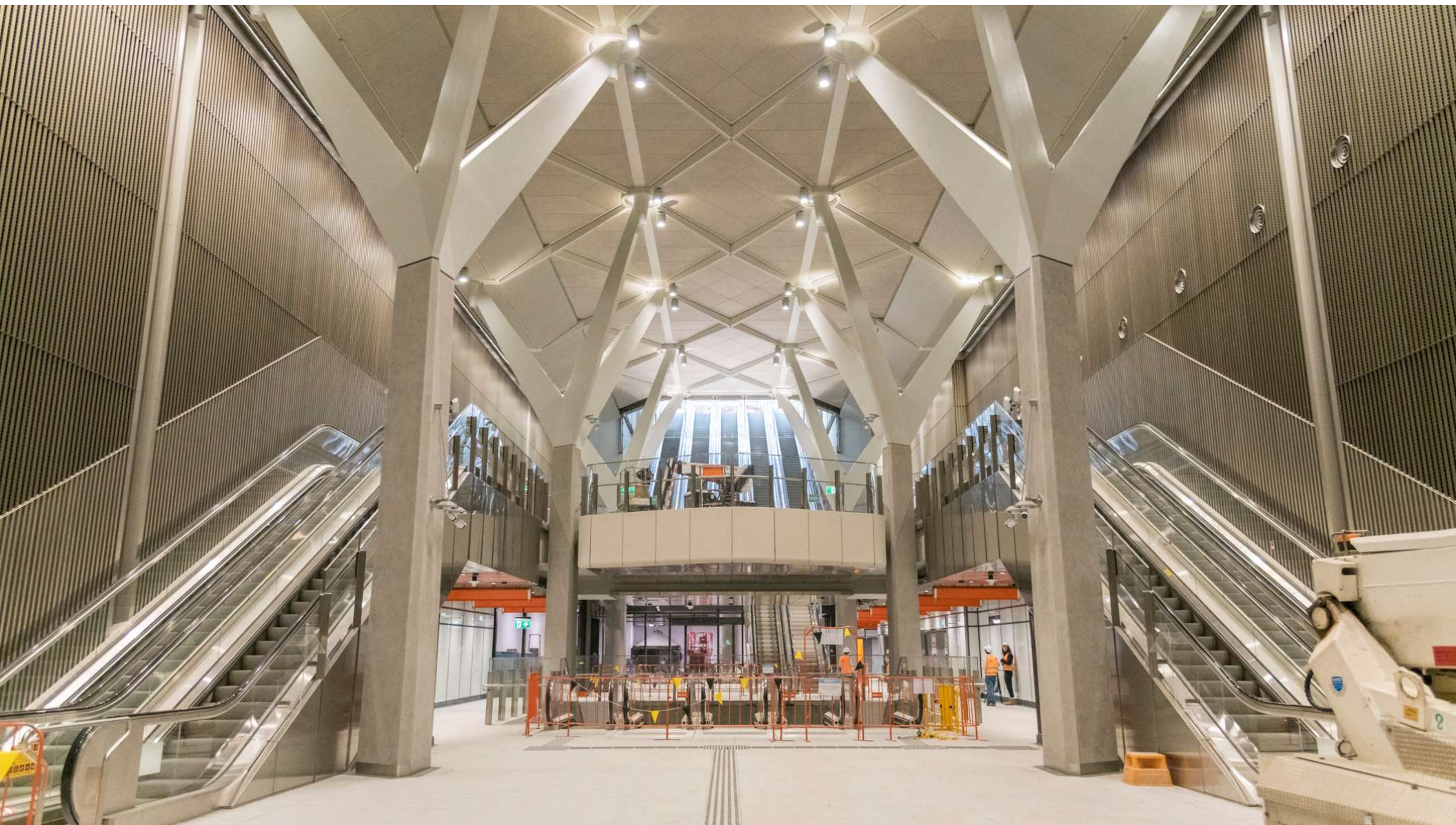














## Town Hall Station

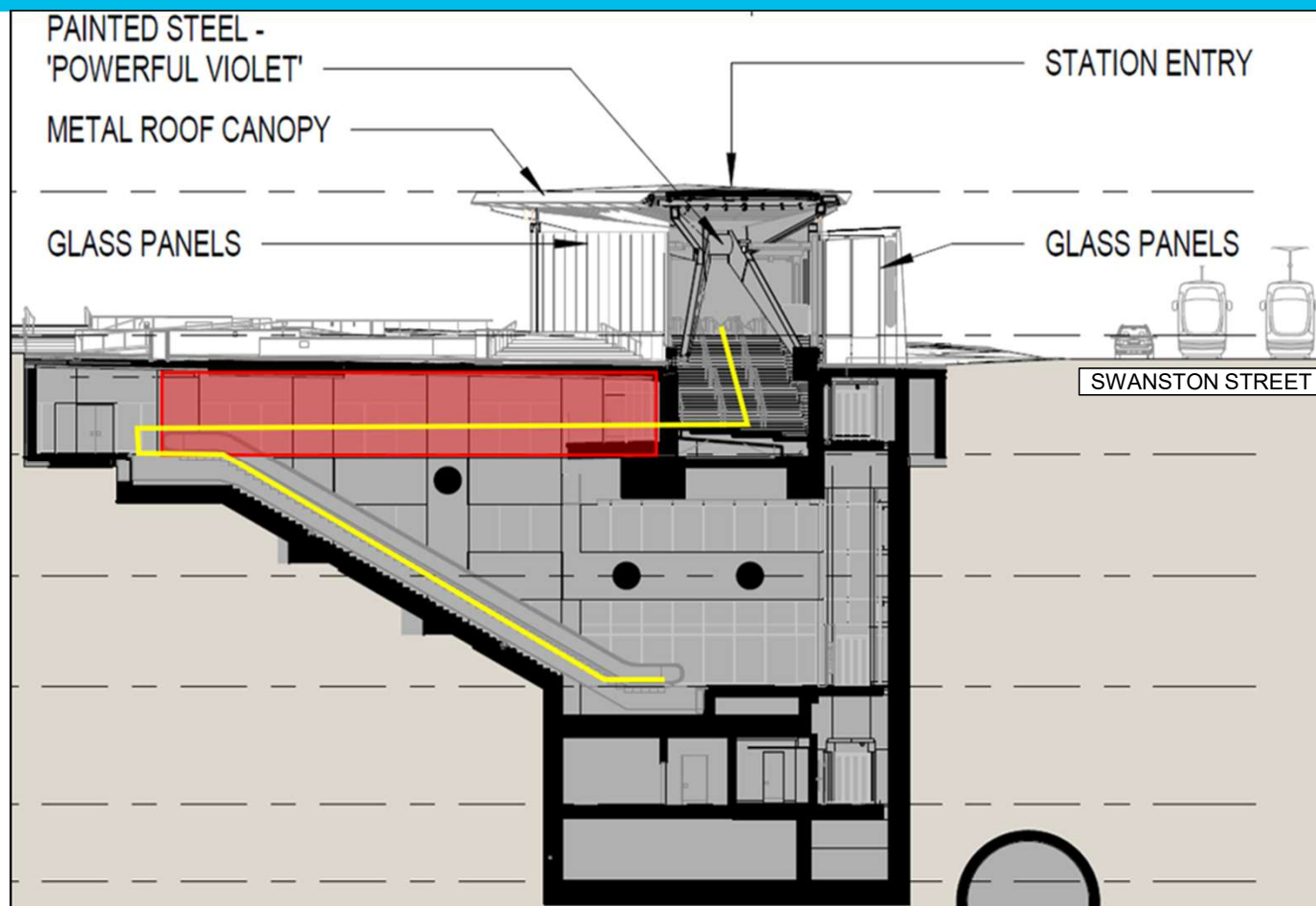
Federation Square

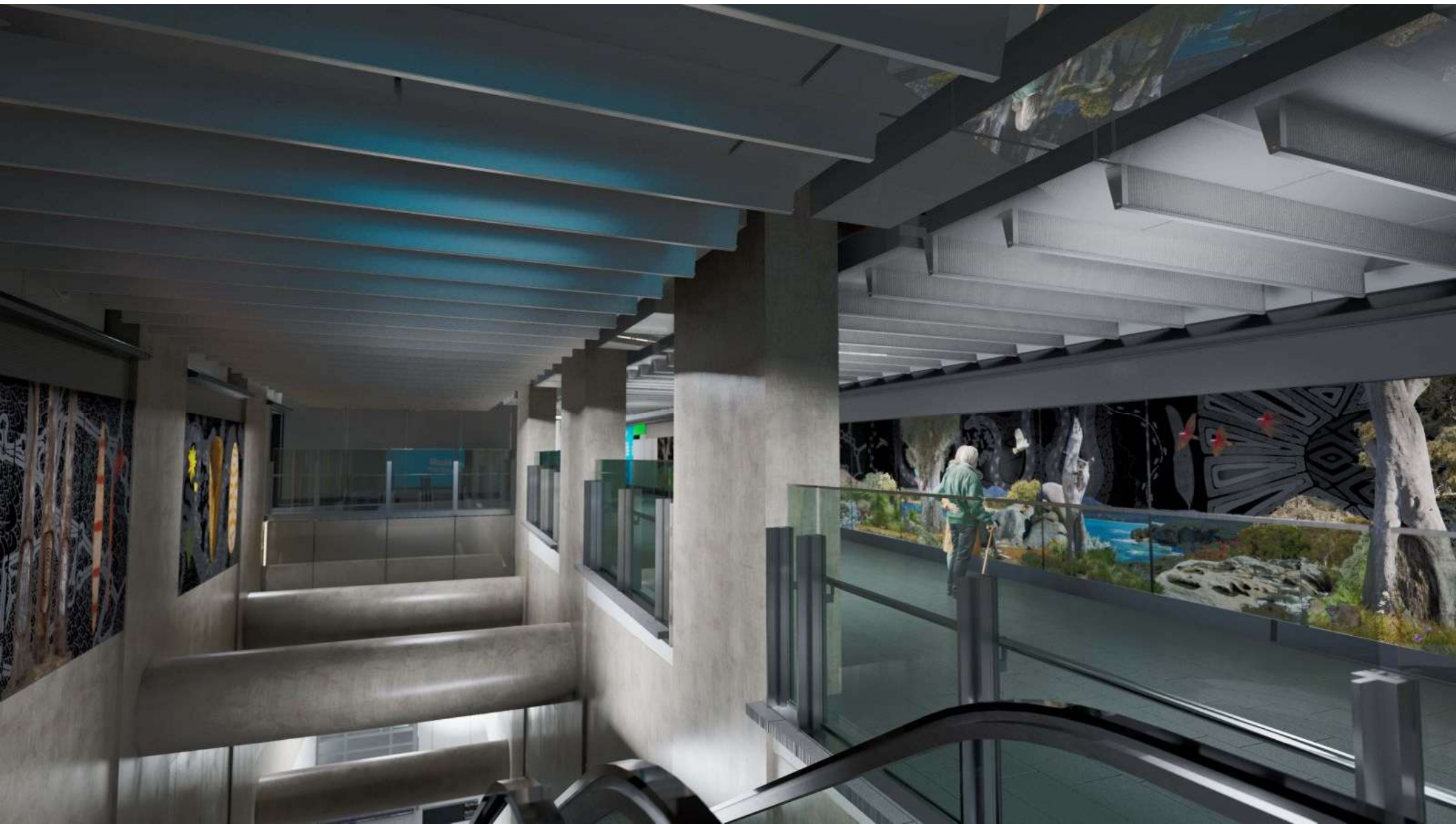


- The main section of the steel station entrance canopy was delivered and installed earlier in October
- Smaller sections are continuing to be delivered, as fit out and installation works continue over the coming months
- A scaffold is being erected until tomorrow to facilitate fit out of the entrance canopy, under a footpath closure
- Structural works are also continuing within the site, including installation of formwork, steel reinforcement, concrete pours and waterproofing
- Works will continue at the Federation Square station entrance until late 2026.

## Town Hall Station Artwork

Federation Square – exact location (view from St Paul's side)





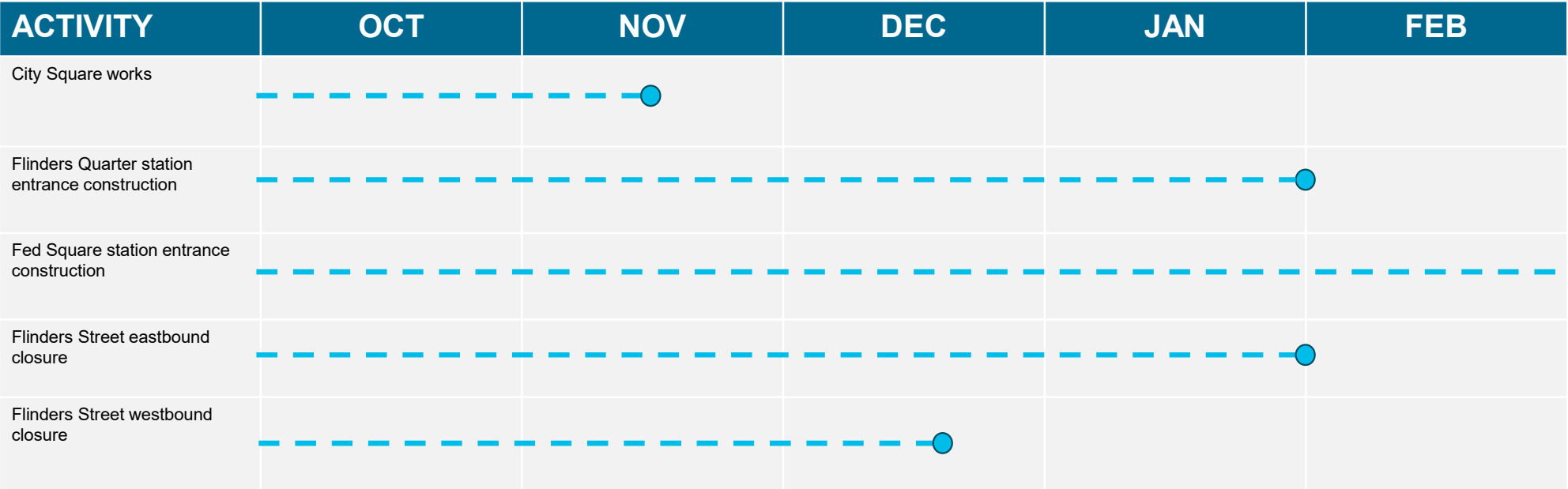




# Program update

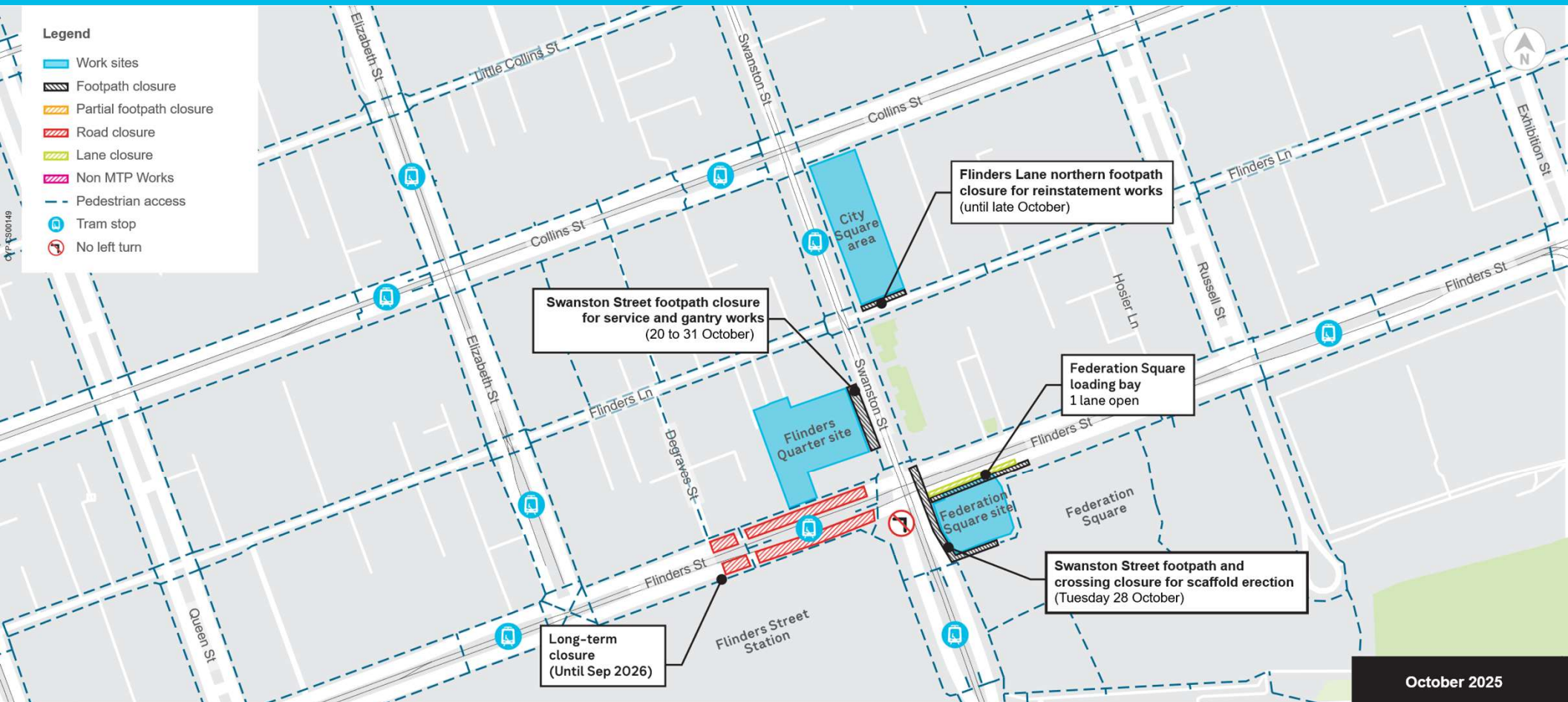
# Town Hall Station

Long-term lookahead



## October 2025 (current)

### Site map



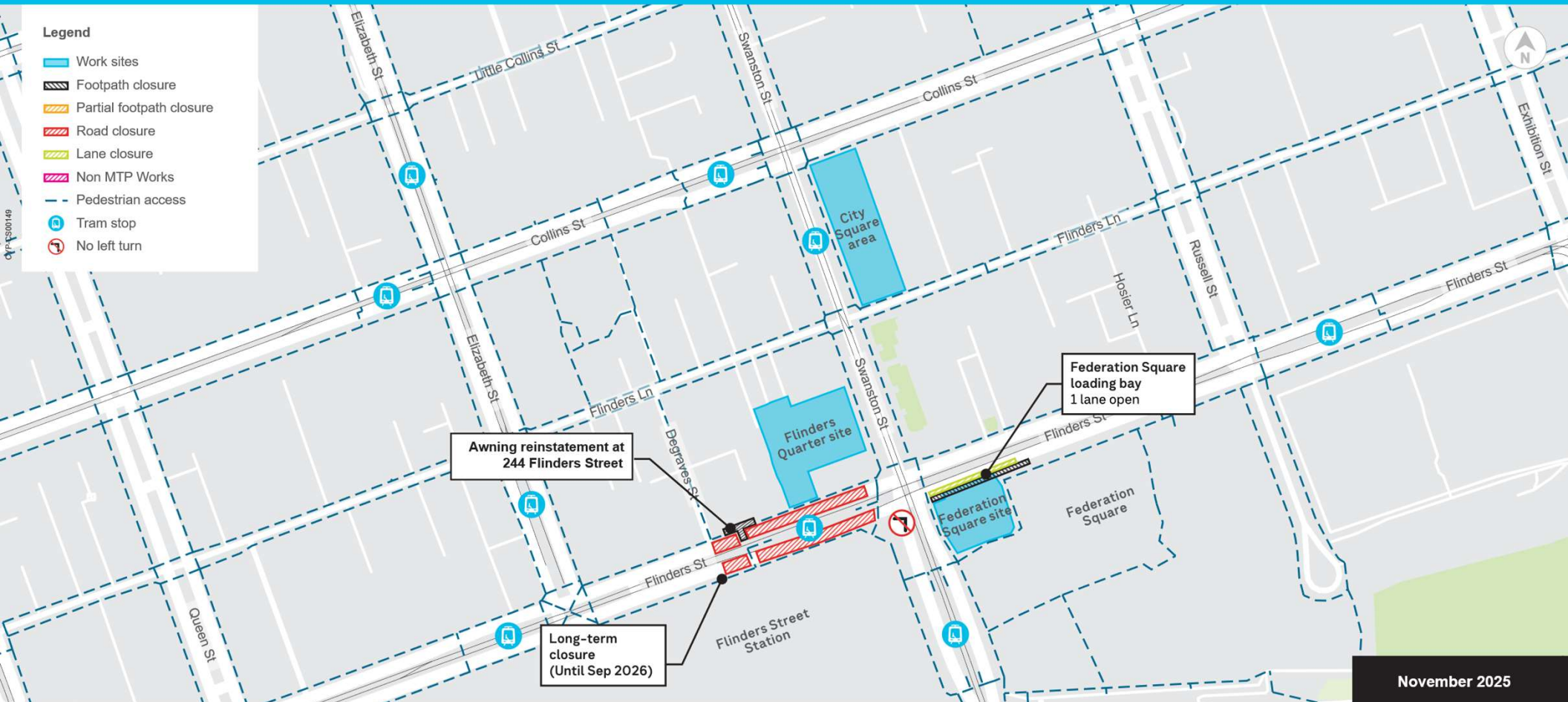
# November 2025

## Proposed Traffic Changes



### Legend

- Work sites
- Footpath closure
- Partial footpath closure
- Road closure
- Lane closure
- Non MTP Works
- Pedestrian access
- Tram stop
- No left turn



November 2025

OFFICIAL: Sensitive



# Questions