



TOWN HALL STATION COMMUNITY REFERENCE GROUP

CROSS YARRA PARTNERSHIP
FRIDAY 5 JUNE 2020





TOWN HALL STATION COMMUNITY REFERENCE GROUP

Jodie Barrington, CBD Precinct Lead, CYP D&C

Blythe Chidgey, Town Hall Station Stakeholder Engagement Manager, CYP D&C



Construction partner:



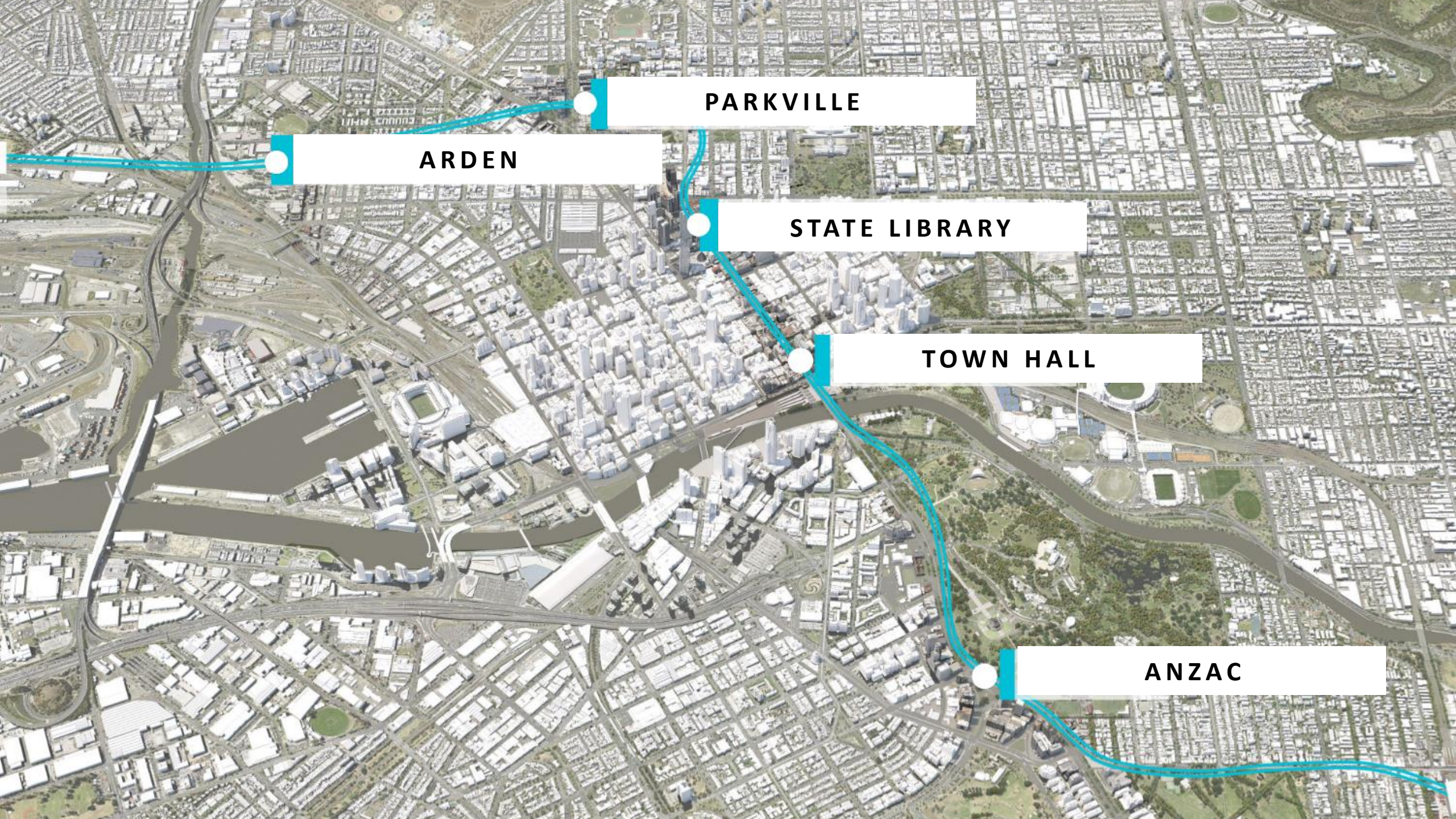
AGENDA



1. Project overview
2. Town Hall Station Update
3. Traffic update

PROJECT OVERVIEW





ARDEN

PARKVILLE

STATE LIBRARY

TOWN HALL

ANZAC

ARDEN

Works at Arden Station are fast transforming the station box into a station.

14-metre high columns that stretch from the base slab to the future station's roof are being constructed in the station Box.



PARKVILLE

Permanent structure works are ongoing within the 270 metre long station box at Grattan Street east.

Construction works to build the station entrance adjacent to the Peter MacCallum Cancer Centre on Grattan Street commenced in late May 2020, with site establishment works.

Grattan Street westbound lanes, between Flemington Road and Elizabeth Street/Royal Parade, will remain closed for three years.



Grattan Street East



Grattan Street West

STATE LIBRARY



Franklin Street West

Level 4 struts are now complete within the red shed at Franklin St West, enabling level 5 excavation to commence.

At the Little La Trobe site, piling was recently completed with pile break back works now underway. At the La Trobe Street site, piling is more than 80% complete and plunge columns are more than 70% complete.

Underground at the A'Beckett Adit reinforced concrete works are now complete, incorporating the State Library station's first architectural concrete elements.

ANZAC

We have reached another major milestone, with tunnel boring machines (TBM) Millie and Alice now both on their way to South Yarra.

Alice joins the yellow TBM Millie who got a head start on the new 1.7km tunnel in April.



ROADHEADER TUNNELLING



CITY SQUARE

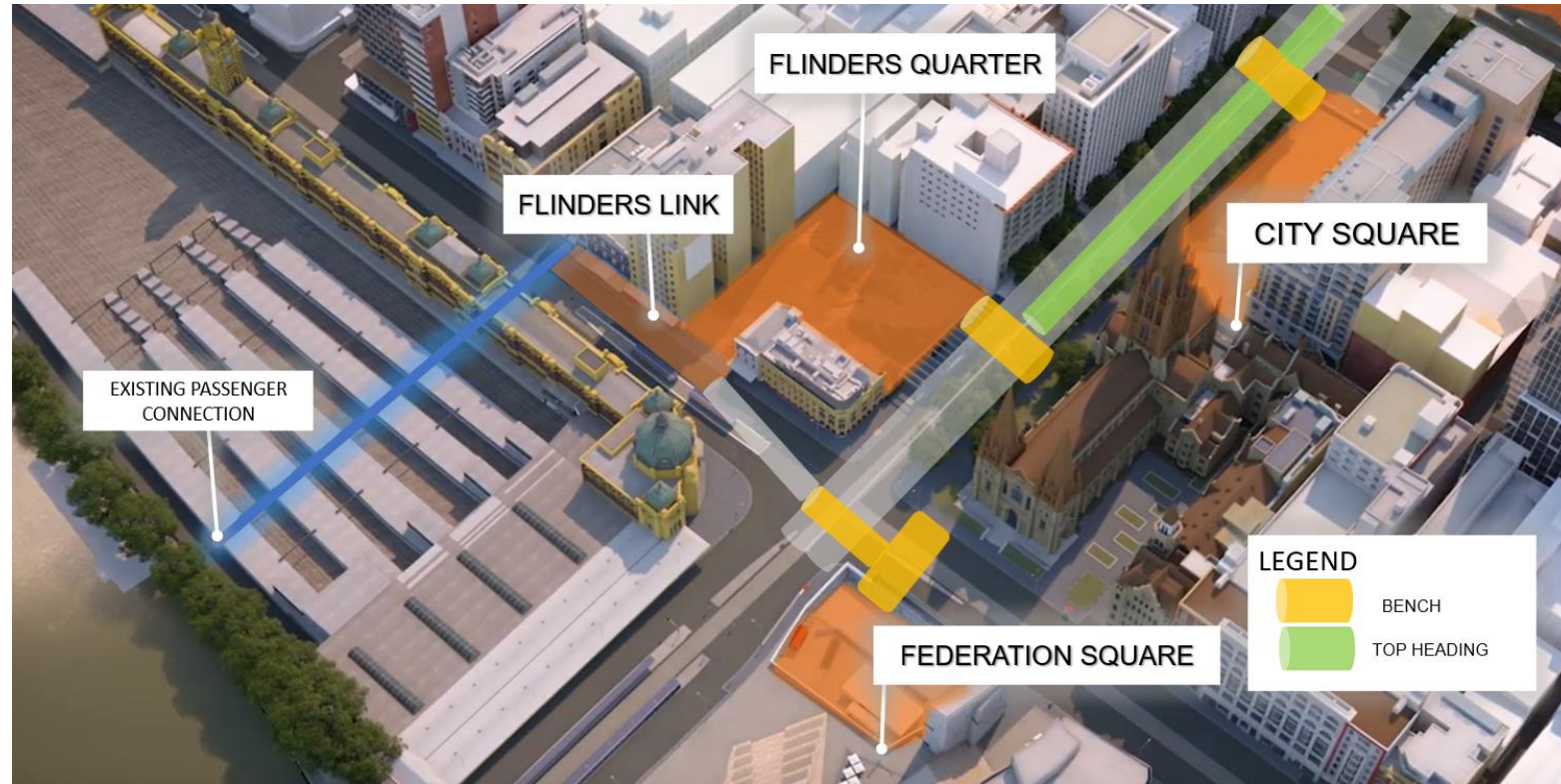
- Completed over 90 metres of the caverns top heading

FEDERATION SQUARE

- Completed bench 1 of the Federation Square Passenger adit

FLINDERS QUARTER

- Completed bench 1



TOWN HALL STATION UPDATE





METROTUNNEL FLINDERS QUARTER FIRST PERMANENT SLAB POUR

Almost 200 cubic metres of concrete was used in the sites first major concrete pour



Flinders Quarter

FLINDERS QUARTER – SHAFT A



Flinders Quarter tunnelling and excavation

- 24 hours, Monday to Sunday

Activity	Jun	Jul	Aug	Sep	Oct	Nov
Roadheader tunnelling						

FLINDERS QUARTER- SHAFT B

Activity	Jun	Jul	Aug	Sep	Oct	Nov
Excavation						
Top down construction						

Concrete pour

FLINDERS QUARTER – OUT OF HOURS WORKS

Deliveries (ongoing)

- Monday to Saturday, 5am to 7am
- Monday to Friday, 6pm to 10pm

Steel fixing, waterproofing and formwork installation (Shaft B)

- Monday to Friday, 7am to 10pm
- Sundays, 8am to 4pm

Permanent concrete structure installation (Shaft B)

- Monday to Friday, 7am to 10pm
- Saturdays, 7am to 1pm
- Intermittently, from 6pm to 7am

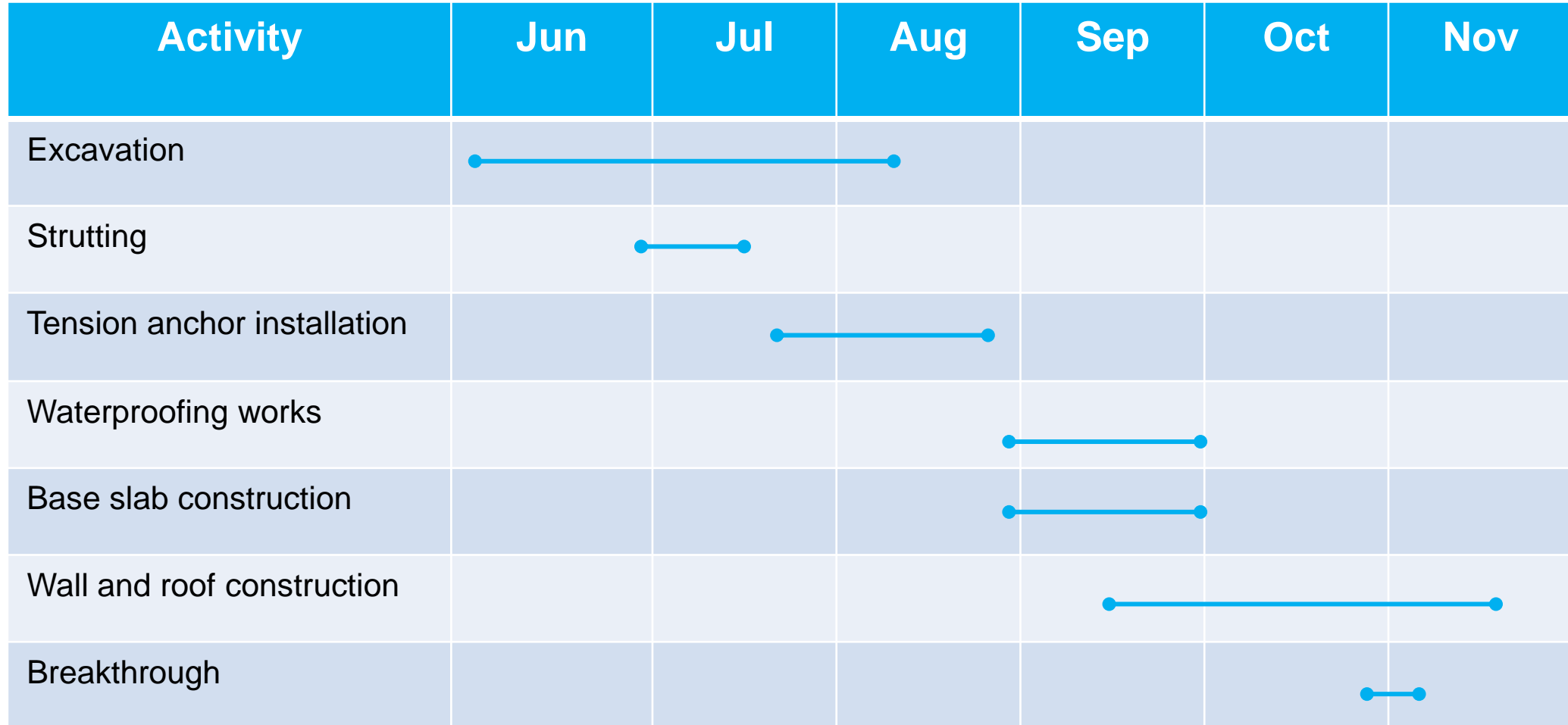
Tunnelling and excavated material removal (Shaft A)

- Monday to Sunday, 24 Hours
- 7am to 10pm - Including the use of excavators and a tower crane
- 6am to 11pm - Clamshell excavation



FLINDERS LINK

FLINDERS LINK WORKS UPDATE





FEDERATION SQUARE

FEDERATION SQUARE WORKS UPDATE



Roadheader 'Clara'

Federation Square tunnelling and excavation

- 24 hours, Monday to Sunday

Activity	Jun	Jul	Aug	Sep	Oct	Nov
Excavation						
Roadheader tunnelling						

Shaft excavation is currently at 18.5 Metres



CITY SQUARE

LOOKING INTO THE CITY SQUARE SHAFT



CITY SQUARE WORKS UPDATE



City Square tunnelling and excavation

- 24 hours, Monday to Sunday

Activity	Jun	Jul	Aug	Sep	Oct	Nov
Shaft excavation						
Roadheader Tunnelling						

TRAFFIC UPDATE





Wilson Parking

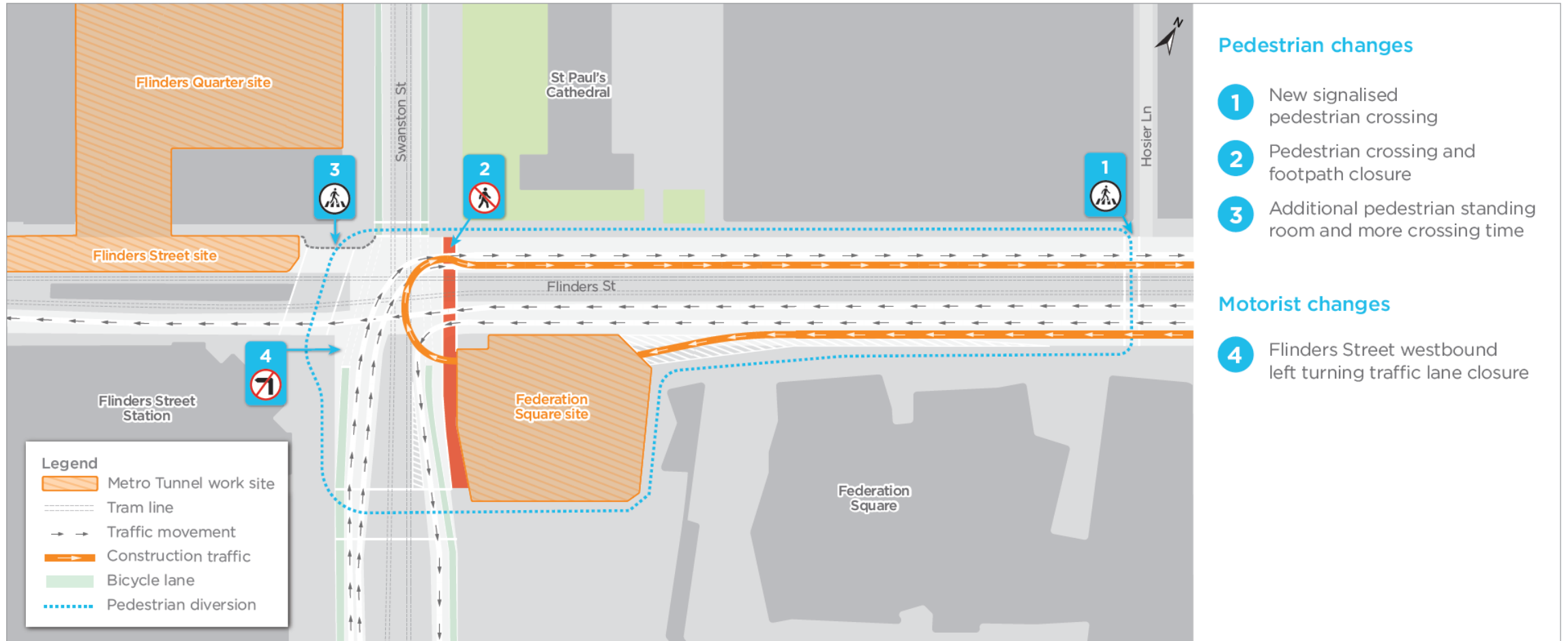
MASONIC CLUB BUILDING

FORUM
one & two

RIALTO TOWER

FLINDERS STREET TRAFFIC CHANGES

FLINDERS STREET TRAFFIC CHANGES



Indicative only.

QUESTIONS?

