



STATE LIBRARY STATION COMMUNITY REFERENCE GROUP

CROSS YARRA PARTNERSHIP
FRIDAY 4 JUNE 2021





STATE LIBRARY STATION COMMUNITY REFERENCE GROUP

Jodie Barrington, CBD Precinct Lead, CYP D&C

Mary Parker, Director Communications & Creative, Cross Yarra Partnership

Melinda Kelly, State Library Station Stakeholder Engagement Manager, CYP D&C



Construction partner:



AGENDA

1. Project overview
2. TBM tunnelling update
3. Metro Tunnel Creative Program
4. State Library Station update

PROJECT OVERVIEW



Presenter: Jodie Barrington 



Western Portal

Arden

Parkville

South Kensington

North Melbourne

State Library

Melbourne Central

Flagstaff

Parliament

Town Hall

Southern Cross

Flinders Street

Richmond

Anzac

South Yarra

Eastern Portal

Sunbury Line

Cranbourne / Pakenham Line

ARDEN

43 (out of 46) Arden Station Services building pre-cast façade panels installed

23 (out of 52) Arden Station entrance brick arch segments have been cast

First Arden Station platform concrete pour completed

Tunnel Invert (floor) slab pours completed between South Kensington and Arden

First rail tunnel gantry has arrived on site

North Melbourne electrical substation building works continue



Services Building Façade



WB Tunnel Invert Complete

PARKVILLE

Permanent station box structure works are ongoing, including construction of internal walls, levels, columns, roof and platforms (FRP works)

Station fit out, including painting, and installation of blockwork and mechanical, electrical and plumbing (MEP) services is ongoing

Preparatory works for construction of two tunnel ventilation shafts and a chiller plant

Stage 2 piling is complete and station entrance excavation has commenced at the Grattan Street west site (adjacent to The Royal Melbourne Hospital and Peter MacCallum Cancer Centre).



Blockwork installation on B3 level



Roof slab construction

TOWN HALL

- Roadheader Melinda was recently demobilised from site
- Sharon, Lily and Clara continue to excavate the rail tunnels to form the trinocular design
- Excavation of basement level 2 at Flinders Quarter is almost complete
- Walls of the Flinders Link connection are now complete and works to breakthrough to the existing Campbell Arcade subway have now commenced
- Bottom up build out works are progressing at City Square with concrete pours taking place on B5, and the first B4 pour due this month.



City Square Build Out Works

ANZAC

TBM Millie has been completely taken apart and removed from the westbound tunnel. TBM Alice continues to be disassembled and removed from the eastbound tunnel

In the south box, demolition of the sacrificial tunnel is now complete

In the north box, the concourse level of the station continues to be constructed section by section.

In the tram/train interchange station entrance, the team continues to construct the base slab of the entrance.

Now that tunnelling is complete, the slurry treatment plant at Edmund Herring Oval continues to be dismantled.



Tram Box Progress

TBM TUNNELLING UPDATE



Presenter: Blythe Chidgey





TBM Tunnelling on the project is now complete

TBM Joan

- Broke through at Town Hall Station – 5 April 2021

TBM Meg

- Broke through at Town Hall Station – 14 May 2021

TBM Alice

- Broke through at Town Hall Station – 3 May 2021

TBM Millie

- Broke through at Town Hall Station – 29 March 2021

In the west, each TBM constructed 4.2kms of tunnels from South Kensington to Town Hall Station.

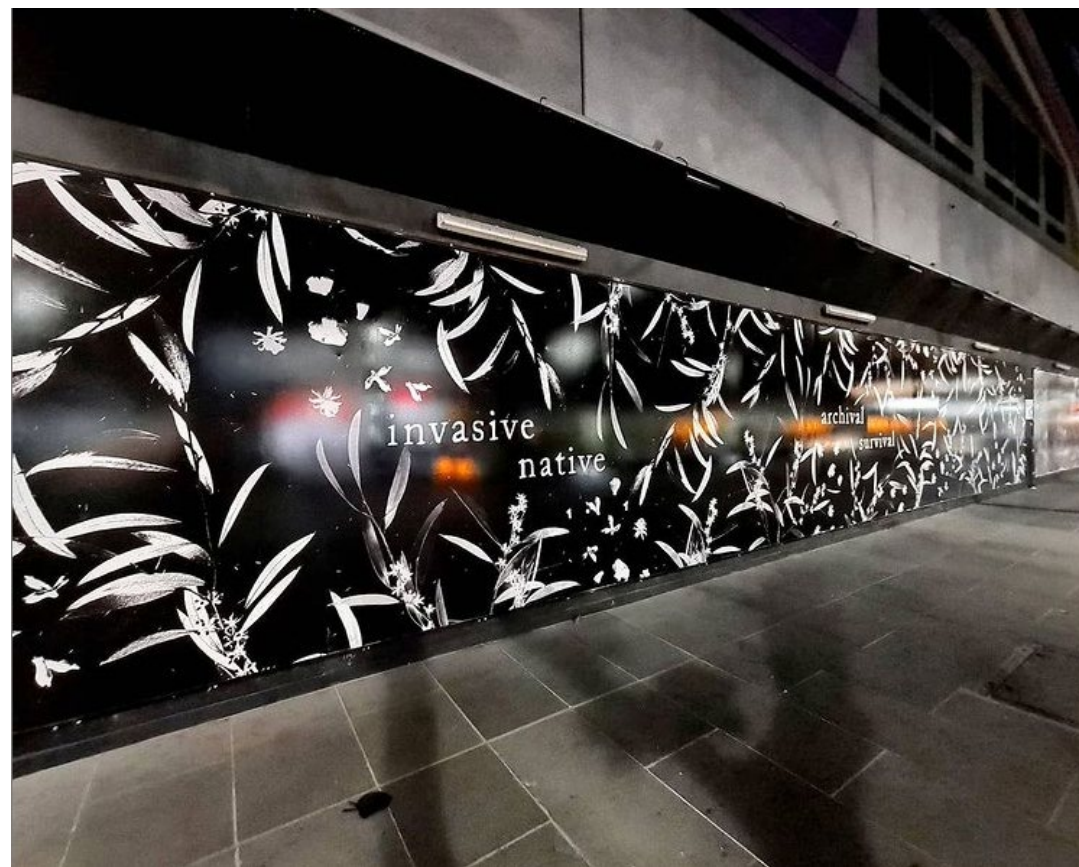
In the east, each TBM constructed 3.5kms of tunnels from South Yarra to Town Hall Station.



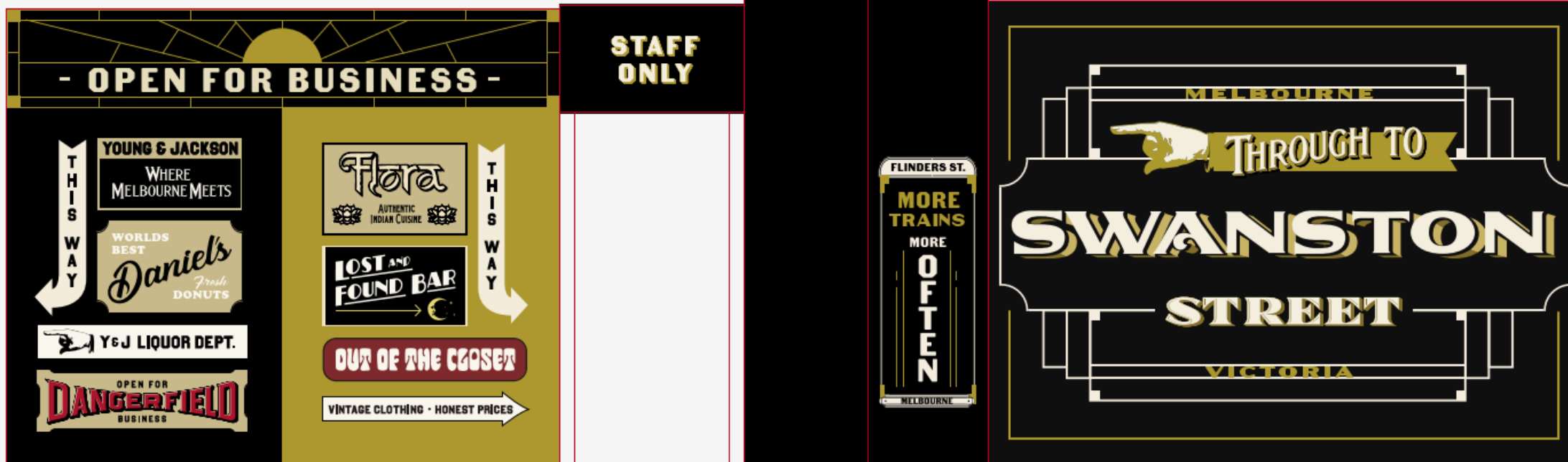
METRO TUNNEL CREATIVE PROGRAM

YIRRAMBOI – RONALD EDWARDS PEPPER





FLINDERS ST CLOSURE



NOLA – SILENT DISCO



NOLA



- June: open call for registrations for Metro Tunnel Creative Program Artist Pool
- July: new artwork in Scott Alley for NAIDOC week
- August: Melbourne International Film Festival partnership
- August: new work at City Square for Melbourne Writers Festival
- August: Melbourne Map in Scott Alley
- October: Fringe Festival partnership
- October: Melbourne Fashion week partnership
- October: Melbourne International Jazz Festival partnership
- December: Xmas activation at City Square and Scott Alley

STATE LIBRARY STATION UPDATE



Presenter: Melinda Kelly 



STRUCTURES AND LINING

- The arch of the central cavern is the main focus of the structures and lining team until mid-July 2021
- Two station tunnel lining formwork systems (STLF's) are being using to install the concrete along the arch of the central cavern
- A custom built cage frame lifter is being used to efficiently and safely install pre-fabricated cages along the arch of the central cavern – this system is able to tie 40 tonnes of reinforcement in just over a day.







STRUCTURES AND LINING

Activity	Jun	Jul	Aug	Sep	Oct	Nov
Central cavern arch lining	—●					
Platform rail tunnel arch lining					●—	
Concrete and reinforcement deliveries	—					

HOURS

- Monday to Sundays, 24-hours



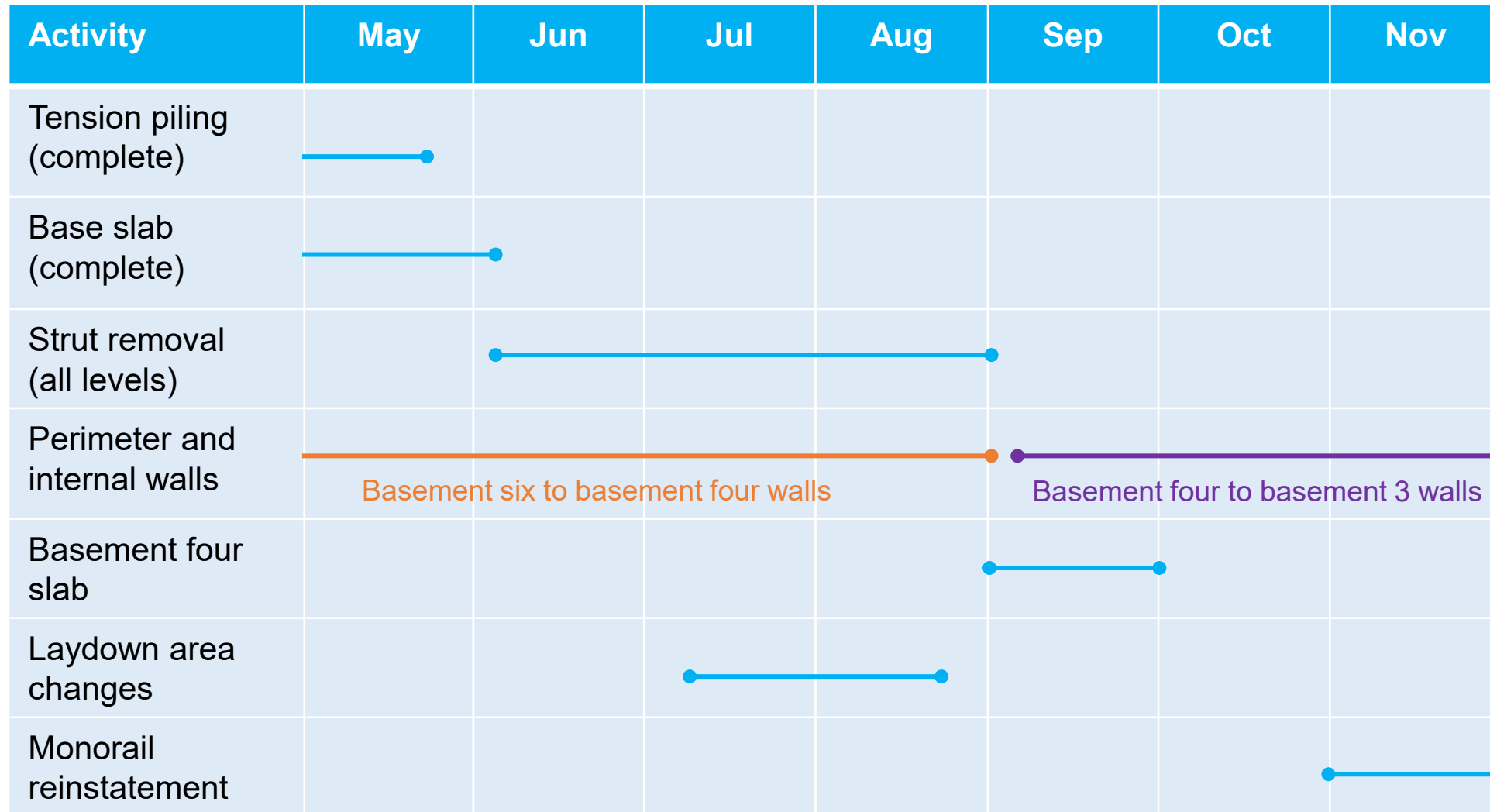


FRANKLIN STREET SITES

FRANKLIN STREET EAST

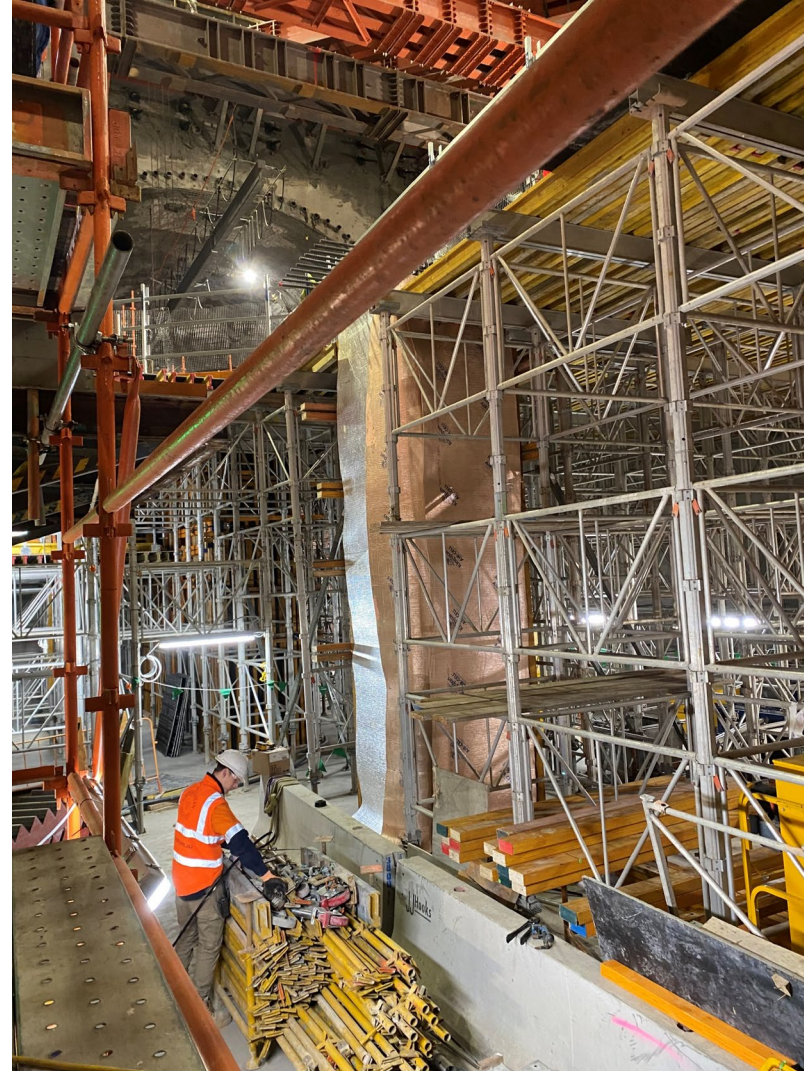
Activity	May	Jun	Jul	Aug	Sep	Oct
B7 lining walls (Complete)	[Timeline bar from start of May to mid-May]					
B5 suspended slab	[Timeline bar from start of May to mid-June]					
Remaining anchor removal (all levels)	[Timeline bar from mid-June to mid-July]					
B5 perimeter and internal walls	[Timeline bar from mid-July to mid-August]					
B4 suspended Slab	[Timeline bar from mid-August to mid-September]					
Strut removal	[Timeline bar from mid-September to mid-October]					
B4 perimeter and internal walls	[Timeline bar from mid-October to end of October]					

FRANKLIN STREET WEST



HOURS

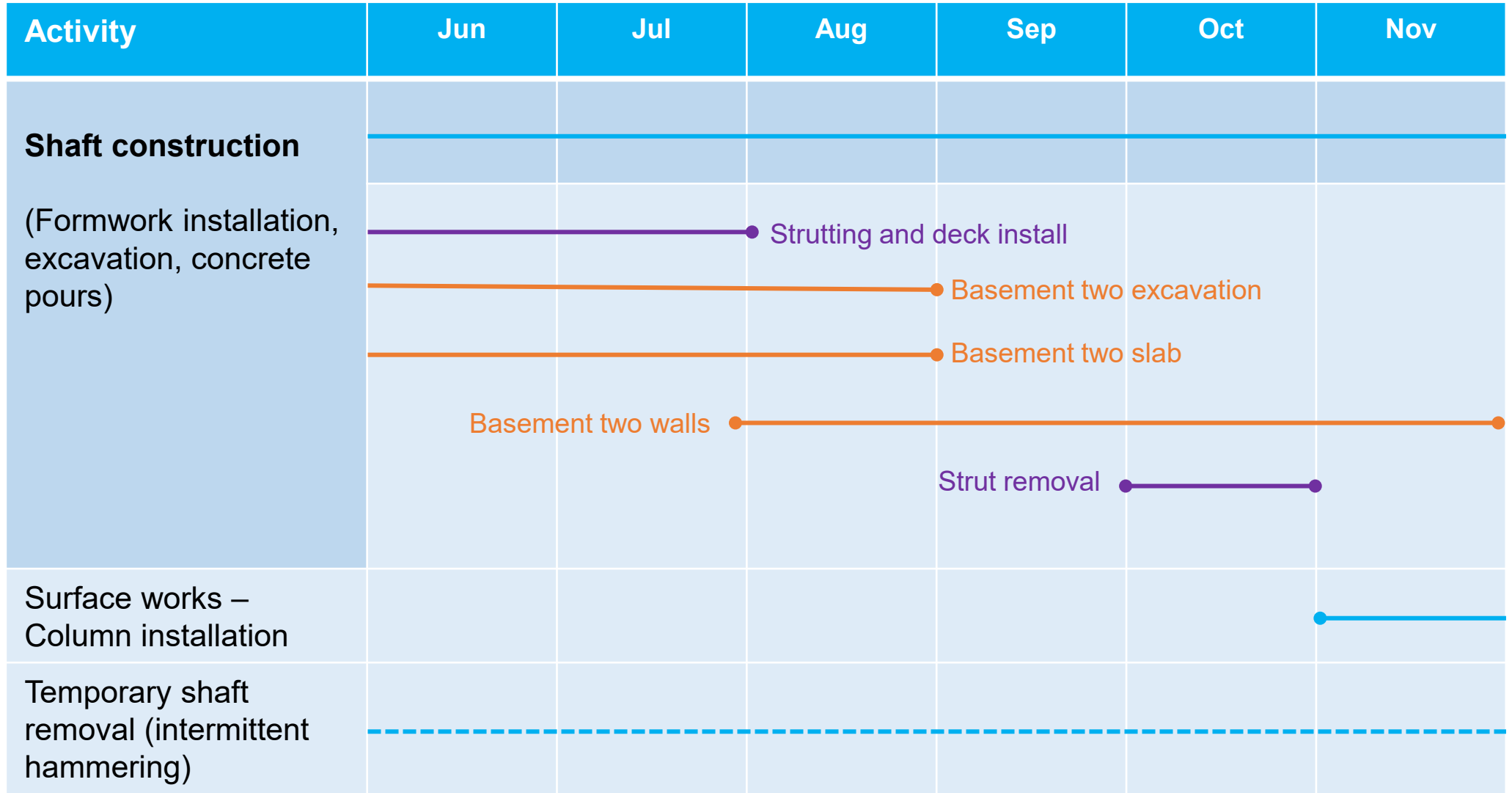
- Monday to Saturdays, 24-hours





LA TROBE STREET UPDATE

LA TROBE STREET SITE UPDATE



Shaft construction

(Excavation, excavated material removal, steel fixing, concrete pours and deliveries)

- Monday to Fridays, 7am to 10pm
- Saturdays, 7am to 6pm

Steel fixing and excavation beneath ground floor slab (as required)

- 10pm to 12am, Monday to Fridays

Concrete finishing works and oversized deliveries

- Monday to Saturdays, 10pm to 7am (as required)

Swanston Street concrete pump operation

- Monday to Sundays, 24 hours (as required)

Little La Trobe Street concrete pump operation

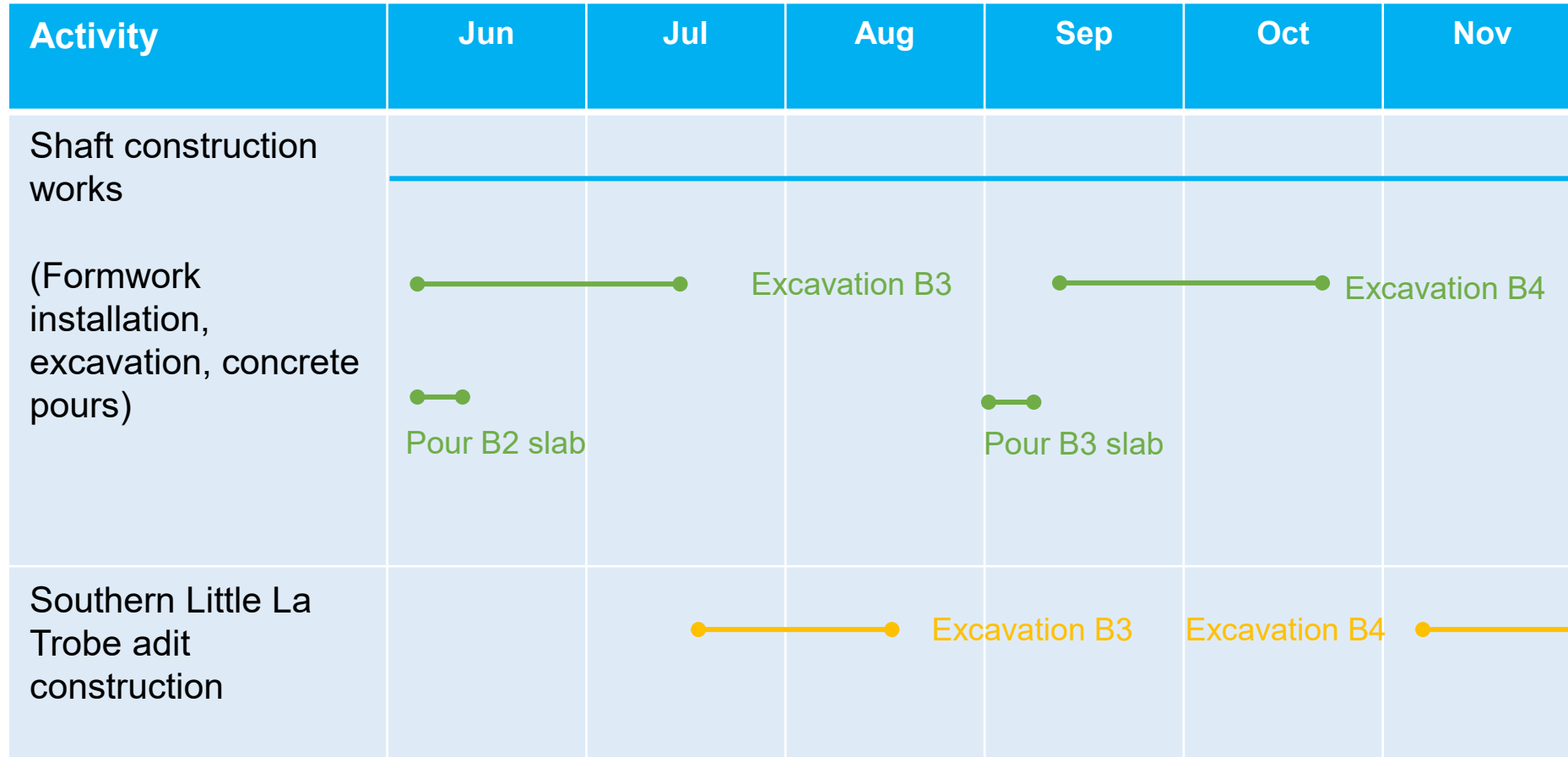
- Monday to Saturdays, 7am to 6pm





LITTLE LA TROBE STREET UPDATE

LITTLE LA TROBE STREET SITE UPDATE

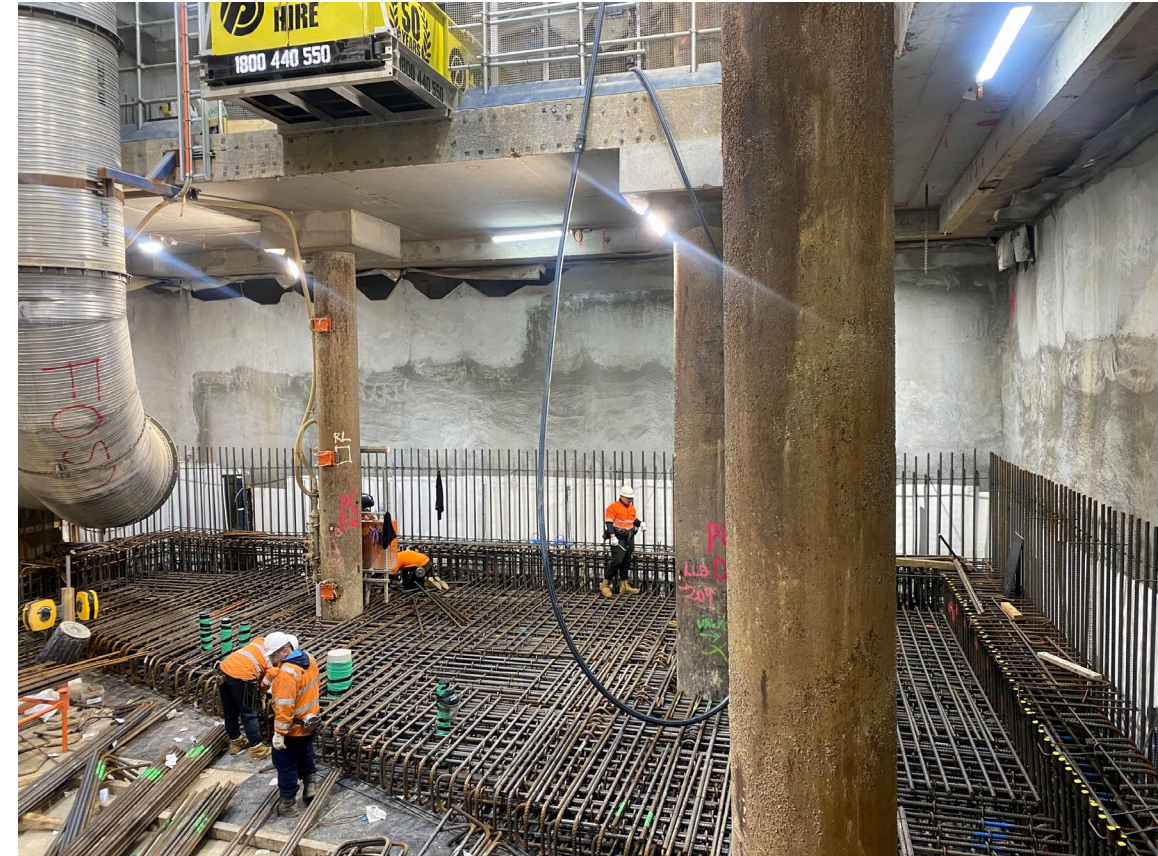


Shaft construction works

- Monday to Fridays, 7am to 10pm
- Saturdays, 7am to 6pm

Concrete finishing works and oversized deliveries

- Monday to Fridays, 10pm to 7am (as required)



QUESTIONS

