



# TOWN HALL STATION COMMUNITY REFERENCE GROUP

CROSS YARRA PARTNERSHIP  
FRIDAY 16 JULY 2021





## TOWN HALL STATION COMMUNITY REFERENCE GROUP

---

**Jodie Barrington**, CBD Stakeholder Engagement Lead, CYP D&C

**Blythe Chidgey**, Town Hall Station Stakeholder Engagement Manager, CYP D&C



Construction partner:



# AGENDA

1. Project Overview
2. Town Hall Station update
3. Waste and Logistics Update

# PROJECT OVERVIEW



Presenter: Blythe Chidgey



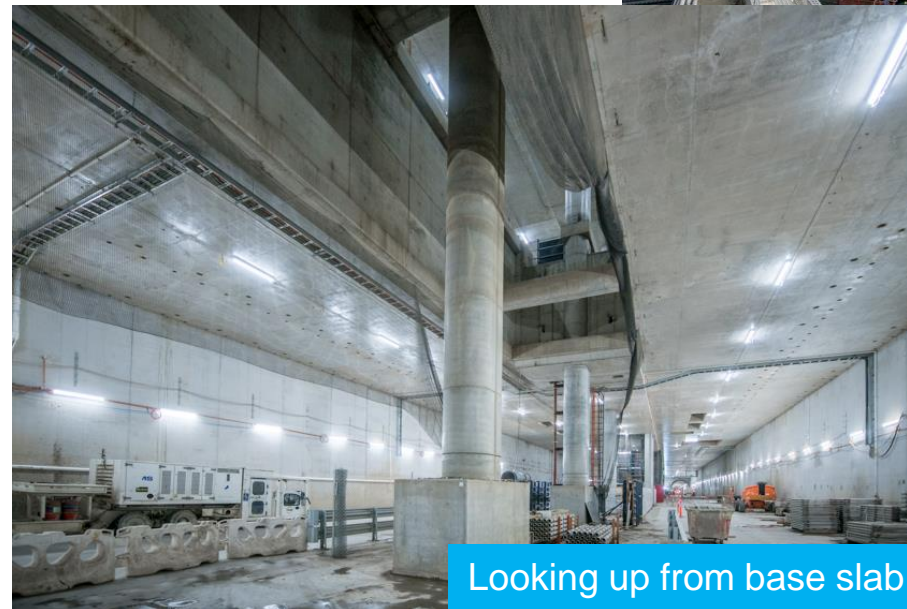
# ARDEN

- At the Arden Station services building, roof installation has commenced
- The ground level entrance stairs were also recently installed and ventilation shaft works completed
- Over at the station entrance, twenty-eight brick arch segments have been cast. The temporary falsework will go up next month. This will support installation of the station entrance arches.



# PARKVILLE

- Construction continues in the main station box, west box and surrounding areas
- In the University Square Car Park, modification of the car park structure is underway including basement excavation
- At the Royal Parade entrance and retail area, construction of lining walls from B2 to roof slab level and removal of piles
- At Grattan Street west, installation of formwork and reinforcement for the station entrance roof slab is almost complete.





# STATE LIBRARY

- Structures and lining team at A'Beckett Street are celebrating a major milestone with the completion of central cavern lining works
- At the Franklin Street sites 'bottom-up' construction is ongoing within the shafts
- At the La Trobe Street site, deck installation on the western section of the site is complete
- At the Little La Trobe site, works have commenced to break back piles on the western boundary. Excavation to the B3 level is ongoing.



Central Cavern

# ANZAC

- D-walls are starting to come down with the demolition of the first section of D-wall that separates the tram interchange and station box
- In the tram/train interchange station entrance area, the falsework deck for the first roof slab pour continues to take shape, as the lining walls are constructed.
- Two of the cross passages between Anzac and Town Hall Station are being excavated, with spoil being removed from the north box at Anzac Station.





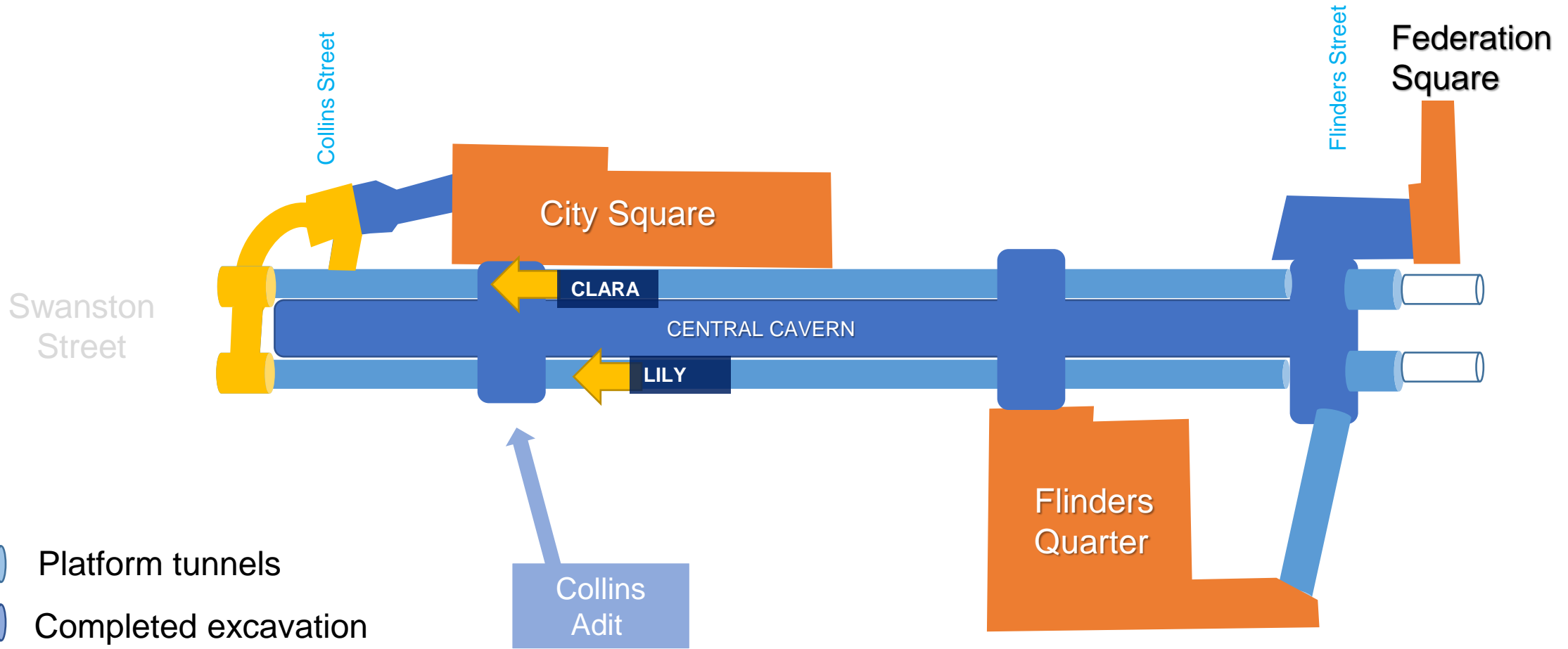
# TOWN HALL STATION UPDATE






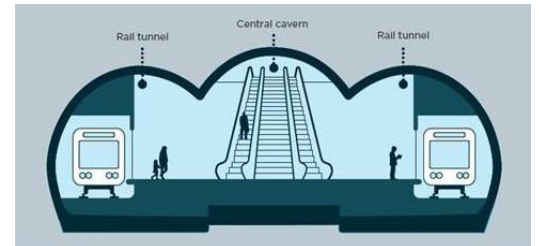
Presenter: Blythe Chidgey



# ROADHEADER TUNNELLING



-  Platform tunnels
-  Completed excavation
-  Roadheader (top-heading)



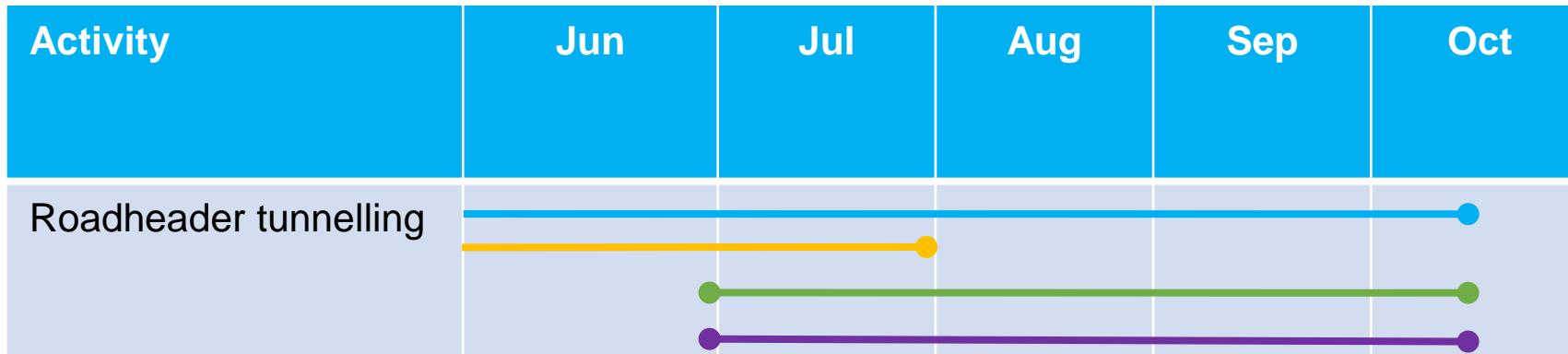


**RAIL TUNNEL AND SHOTCRETE SHELL**

# ROADHEADER TUNNELLING UPDATE

## HOURS

24 hours, Monday to Sunday



Platform rail tunnel excavation (top-heading)

Platform rail tunnel excavation (bench)

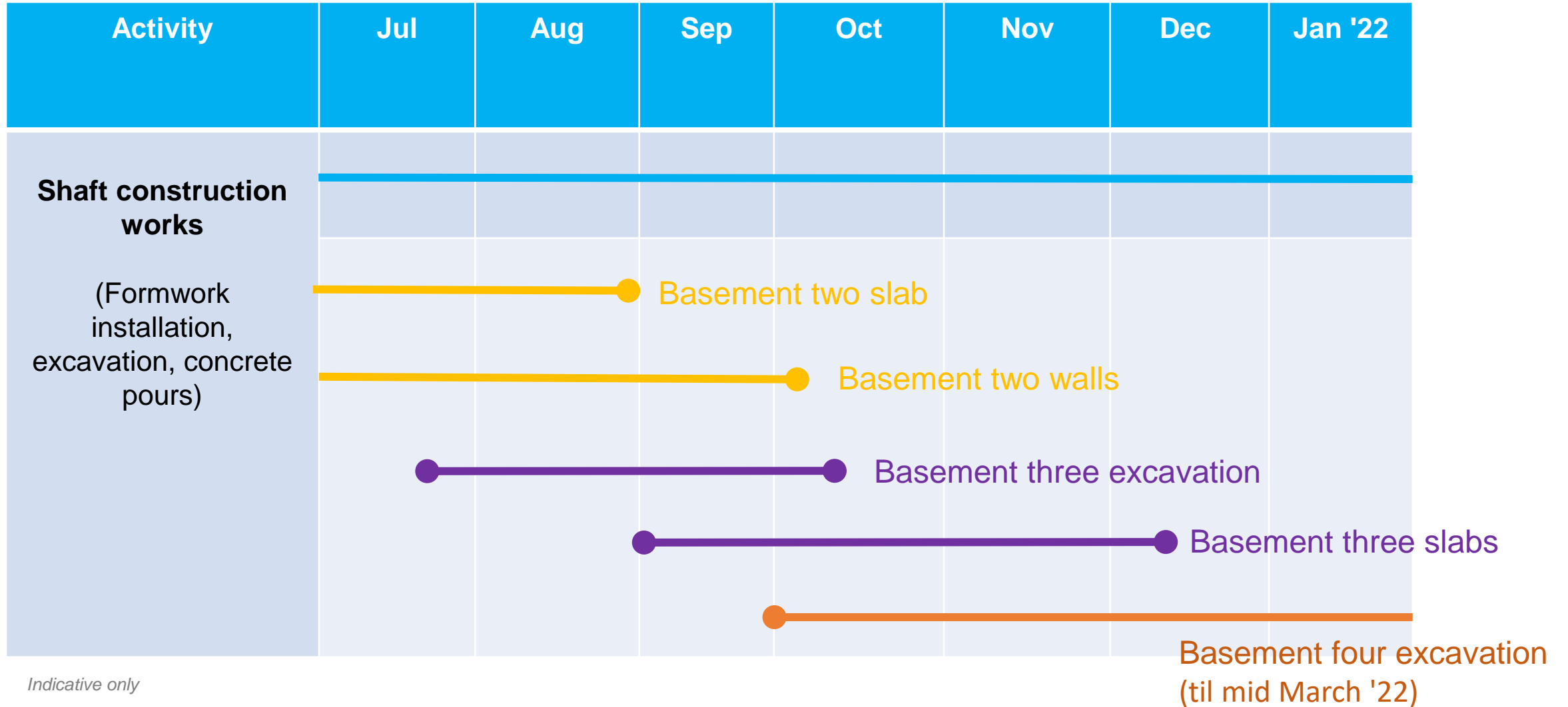
Shotcrete shell removal





## FLINDERS QUARTER

# FLINDERS QUARTER



Indicative only

# FLINDERS QUARTER HOURS

## Standard Hours

Monday – Friday

**7am – 6pm**

Saturdays

**7am – 1pm**

## Out of Hours

**Monday - Friday**

**5am – 7am**

Deliveries and spoil removal

**Monday - Friday**

**6pm – 12am**

Excavation hammering until 9pm

Spoil removal until 10pm

Steel fixing, formwork and other low-level

noise activities

**Saturdays**

**1pm – 6pm**

Excavation hammering

Spoil removal

Steel fixing and formwork

**Sundays**

**8am – 6pm**

Steel fixing and formwork

Other low-level noise activities





**FLINDERS LINK**



# FLINDERS LINK WORKS UPDATE

Activity	Jun	Jul	Aug	Sep	Oct	Nov	Dec
Breakthrough		● — ●					
Roof construction		● — ●					
Backfill works			● ————— ●				

Including strut removal and utility installation



**TBM MEG**





**TBM SHIELD**





**FEDERATION SQUARE**



# FEDERATION SQUARE WORKS UPDATE

## HOURS

24 hours, Monday to Sunday

Activity	Jun	Jul	Aug	Sep	Oct	Nov	Dec
Tunnelling support works (excavated material removal)							





**CITY SQUARE**



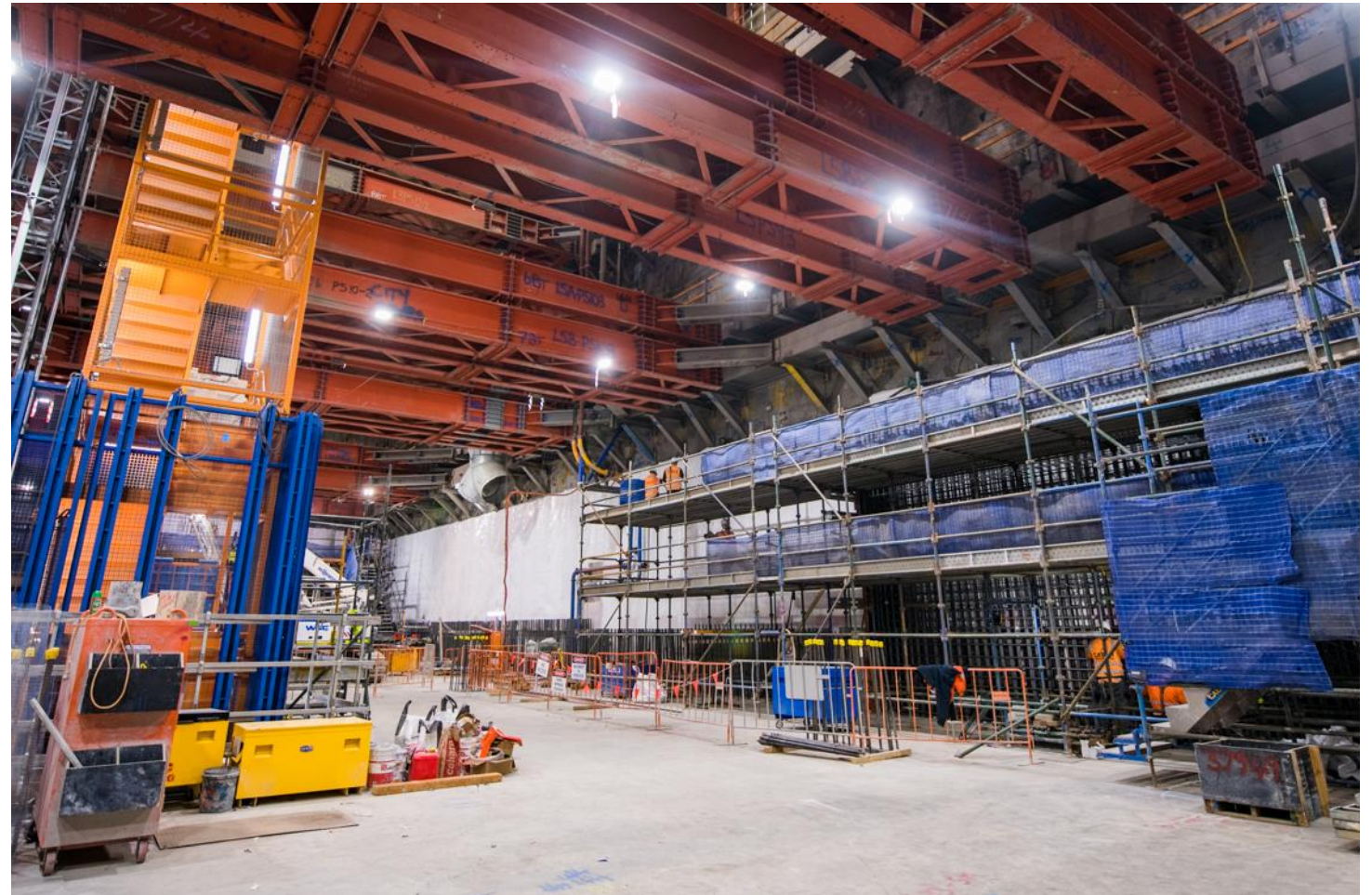
# CITY SQUARE WORKS UPDATE

Activity	Jun	Jul	Aug	Sep	Oct	Nov
Excavation			●————●			
Tension pile installation			●————●			
Station build out works						

Bottom up construction sequence in the shaft including the construction of the base slab, walls and suspended slabs

## HOURS

Monday to Sunday, 24-hours





# WASTE AND LOGISTICS



Presenter: Jodie Barrington



# STATION WASTE MANAGEMENT

The design provides

- Compliant outcomes for Station (PSTR) and OSD (Incorporated Document)
- Inclusion of Precinct waste management accommodating Nicholas Building, Y&J and Dangerfield premises
- Implementation of a traffic management system at Royston Place providing a safer precinct solution
- Decluttering and pedestrianisation of Cocker and Scott alleys through removal of existing waste bin storage
- Off street, separate and secure waste collection and loading dock facilities within the station



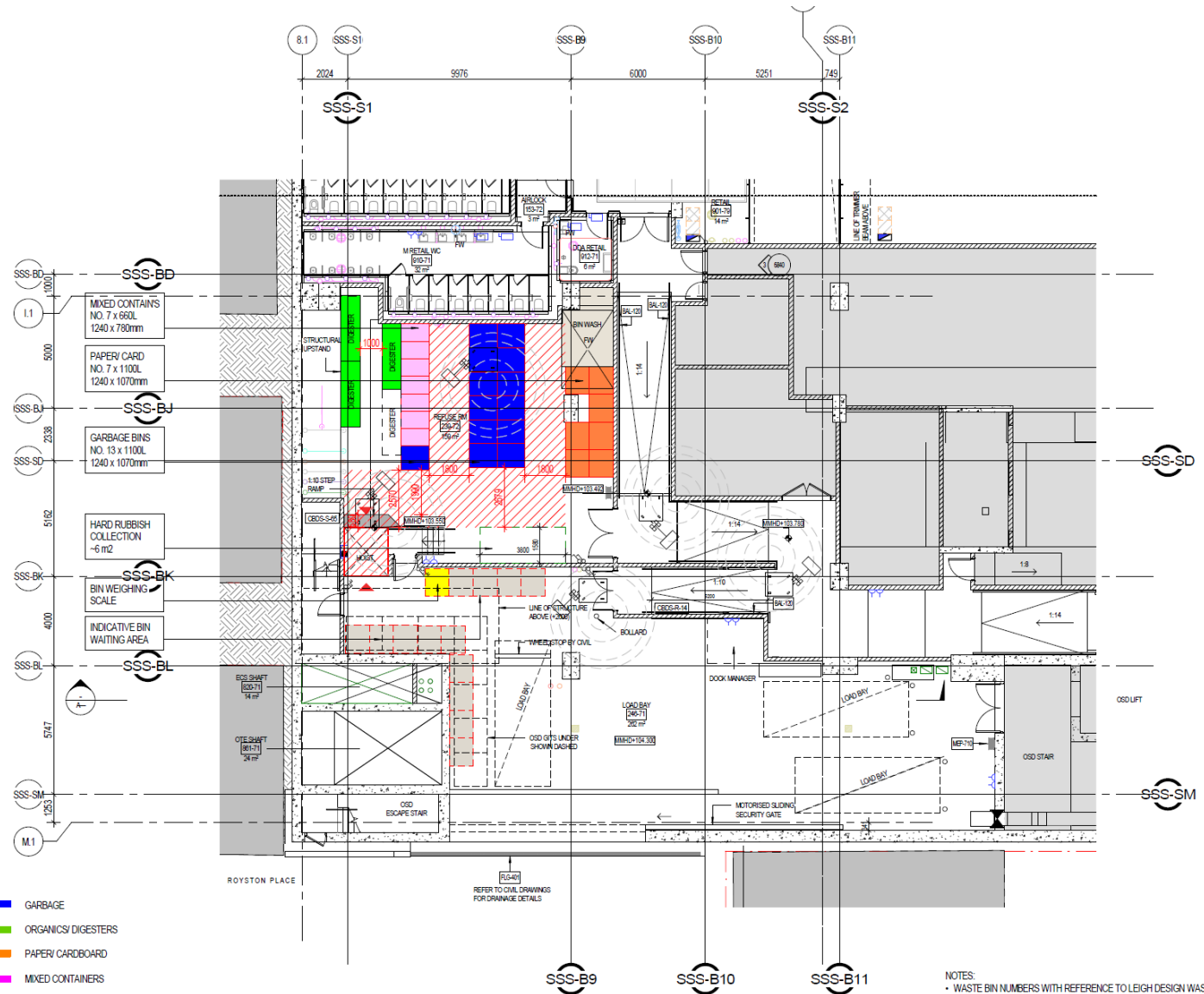
# STATION WASTE TRANSFER ROOM

The Station Waste Transfer Room has been designed to accommodate

- All station and OSD waste
- All waste collections from Nicholas Building, Y&J and Dangerfield
- Removal of waste storage from within Cocker Alley

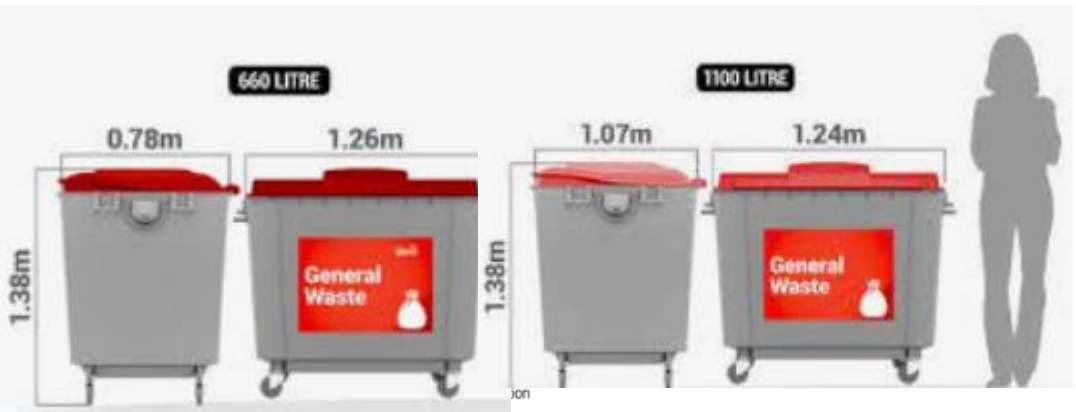
The transfer room provides

- Easy access in and out via the laneways at Ground floor level
- Share use facility to service precinct
- Dedicated lift to waste collection room and loading bay in B1
- Secure room with mechanical ventilation system



- GARBAGE
- ORGANICS/ DIGESTERS
- PAPER/ CARDBOARD
- MIXED CONTAINERS
- HARD RUBBISH AREA

NOTES:  
 • WASTE BIN NUMBERS WITH REFERENCE TO LEIGH DESIGN WASTE MANAGEMENT PLAN  
 • FOURTH DIGESTER INDICATIVE FOR SPACEPROOFING PURPOSES





# STATION LOADING ZONE AND COLLECTION ROOM

The station loading dock has been designed to include

- All waste collections
- Station operations and maintenance activities
- All OSD goods deliveries (loading and unloading)

The loading dock provides

- Vehicle access in and out via Royston Place (forward in/forward out)
- Three dedicated vehicle parking bays
- Shared use (station and OSD)
- Direct access to the Station and OSD back of house
- Secure roller shutter and mechanical ventilation system

# LOGISTICS ACCESS – ACTIVE TRAFFIC MANAGEMENT SYSTEM

Figure 5.1 - Schematic of loading bay and surrounding area

