

Map Projection: Transverse Mercator
Horizontal Datum: GDA 1994
Grid: GDA 1994 MGA Zone 54



LEGEND

- | | | |
|---|--------------------------------|-----------------------------|
| Maximum Construction Footprint | Existing Highway | Unsealed track |
| Carriageway & Interchanges | Sealed road (arterial & local) | Sealed walking/bike trail |
| Service Road | Unsealed road | Unsealed walking/bike trail |
| Service road to be built under AMP-3 conditions | | |
| AMP3 Intersections | | |



CLIENTS | PEOPLE | PERFORMANCE



VicRoads
Western Highway Project

Recommended Option 2
Beaufort to Ararat

Job Number	31-27558
Revision	F
Date	24 Aug 2012

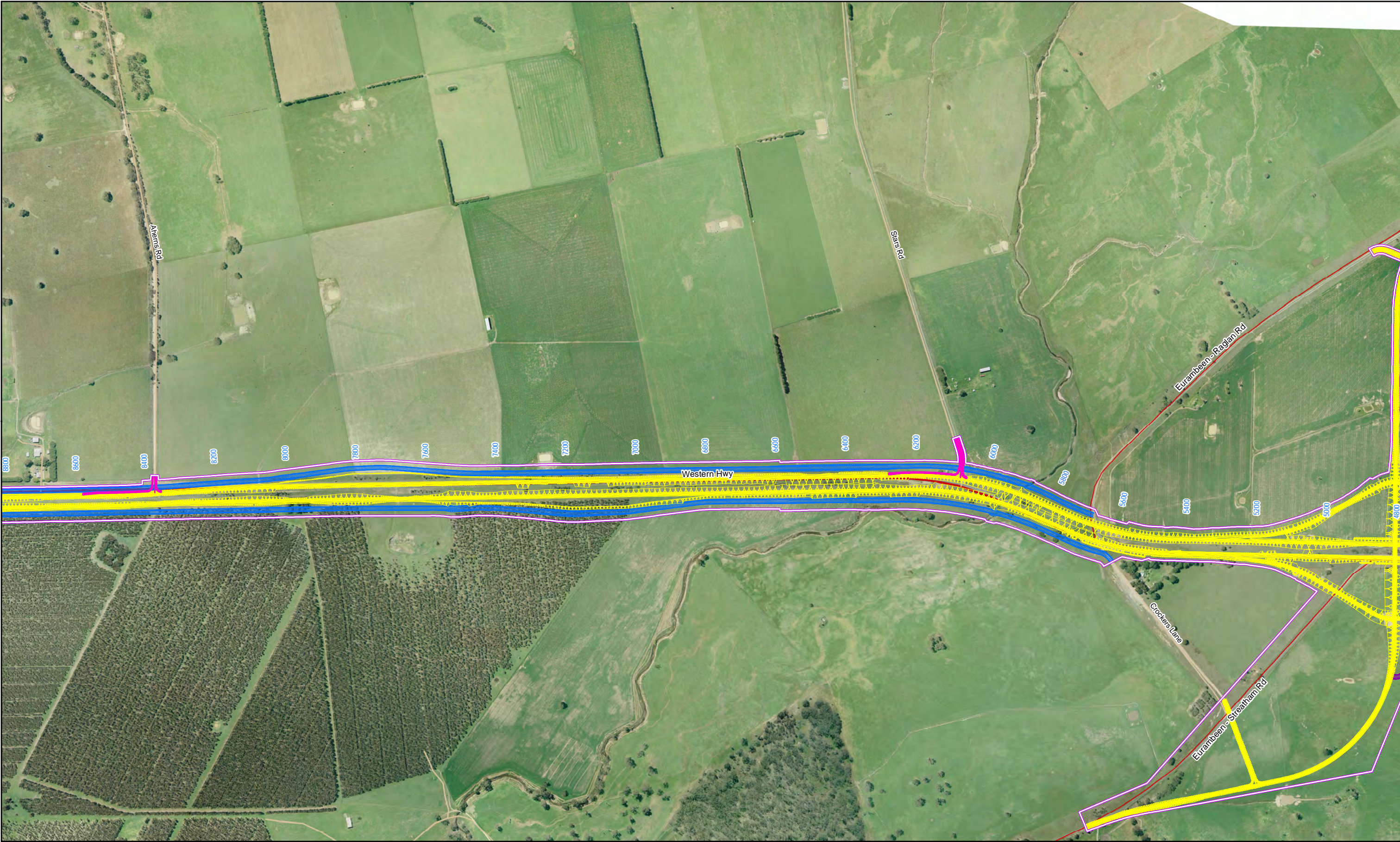
Sheet 2

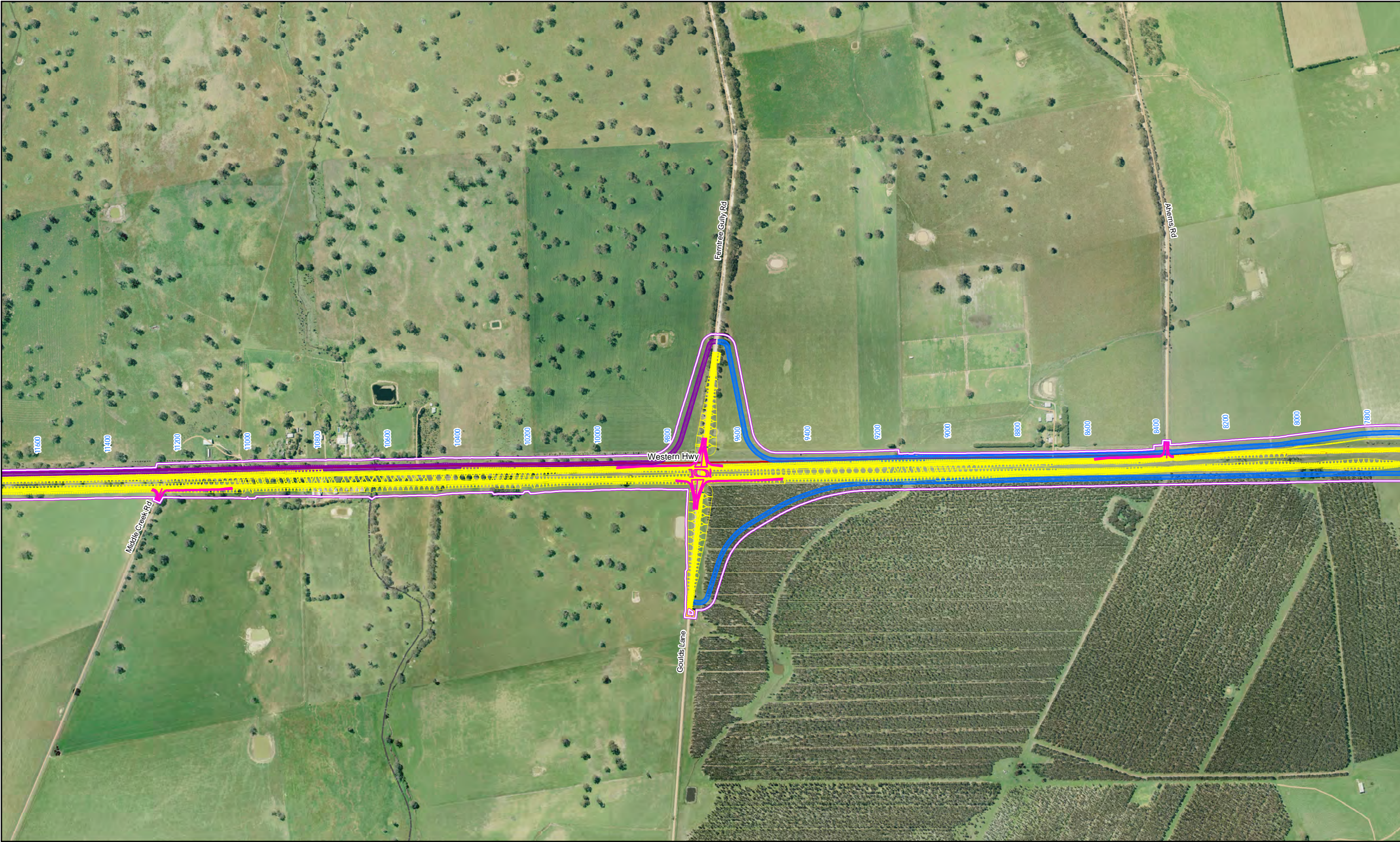
G:\31\27558\GIS\Maps\Deliverables\Stage 2\RISK AND IMPACT ASSESSMENT\05_ALIGNMENTS_FOR_SPECIALISTS\3127558_S2_027_Recommended_Alignment_Option_2_FINAL_20120712_A3L_MB.mxd

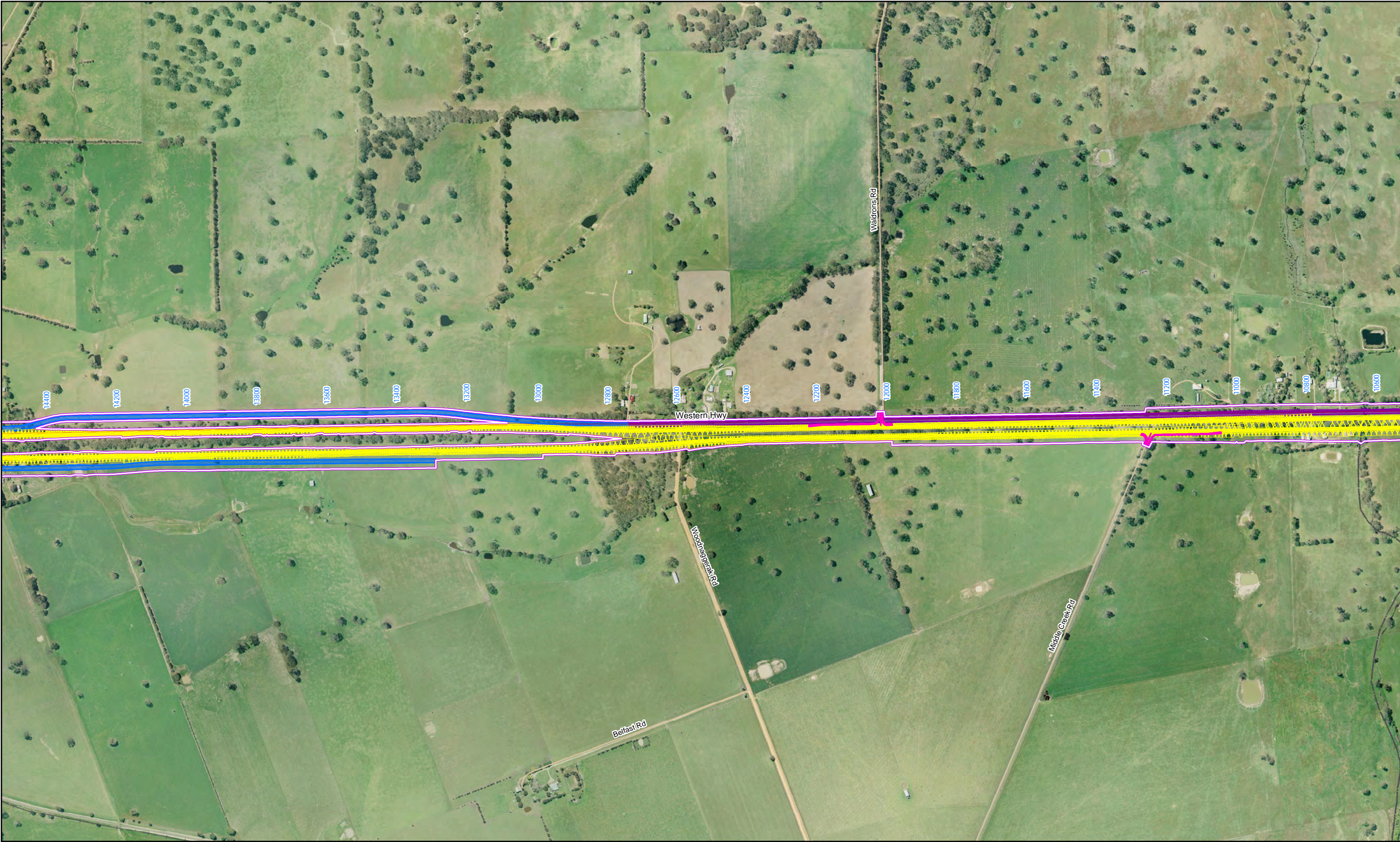
© 2012. Whilst every care has been taken to prepare this map, GHD (and DATA CUSTODIAN) make no representations or warranties about its accuracy, reliability, completeness or suitability for any particular purpose and cannot accept liability and responsibility of any kind (whether in contract, tort or otherwise) for any expenses, losses, damages and/or costs (including indirect or consequential damage) which are or may be incurred by any party as a result of the map being inaccurate, incomplete or unsuitable in any way and for any reason.

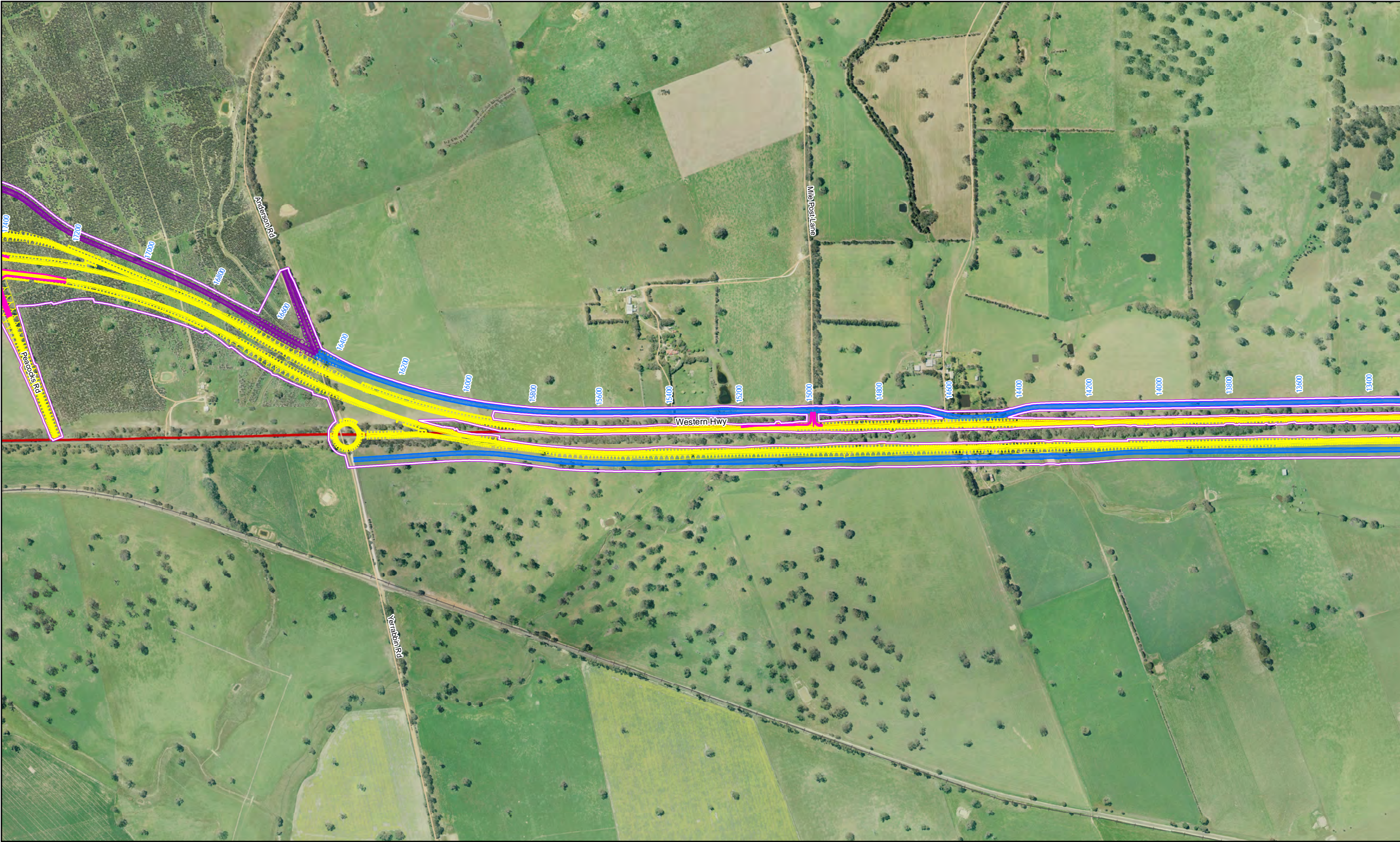
Data source: GHD, 2012; DSE, VicMap, 2012, VicRoads, 2012. Created by:splaird

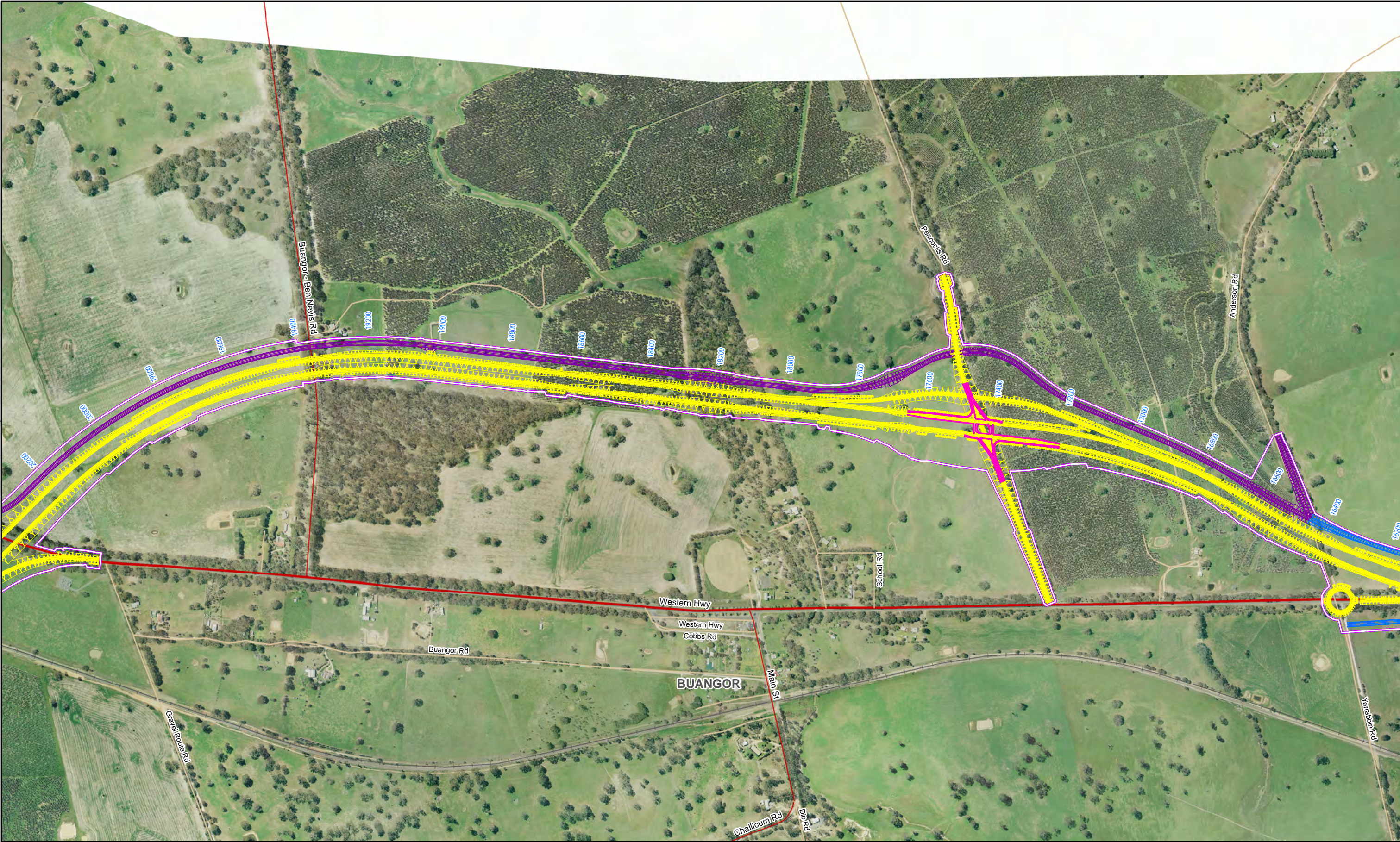
180 Lonsdale Street Melbourne VIC 3000 Australia T 61 3 8687 8000 F 61 3 8687 8111 E melmail@ghd.com W www.ghd.com

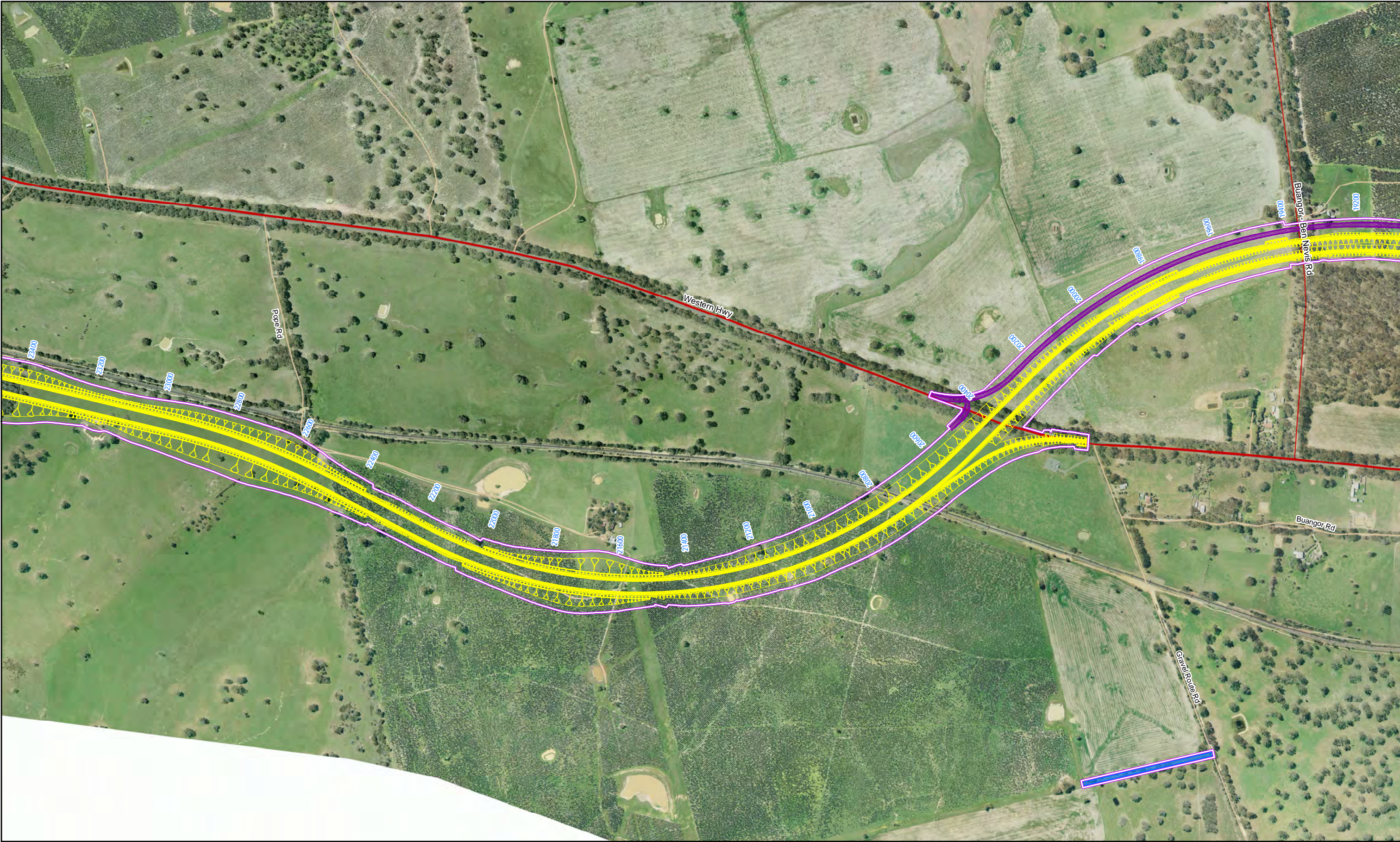


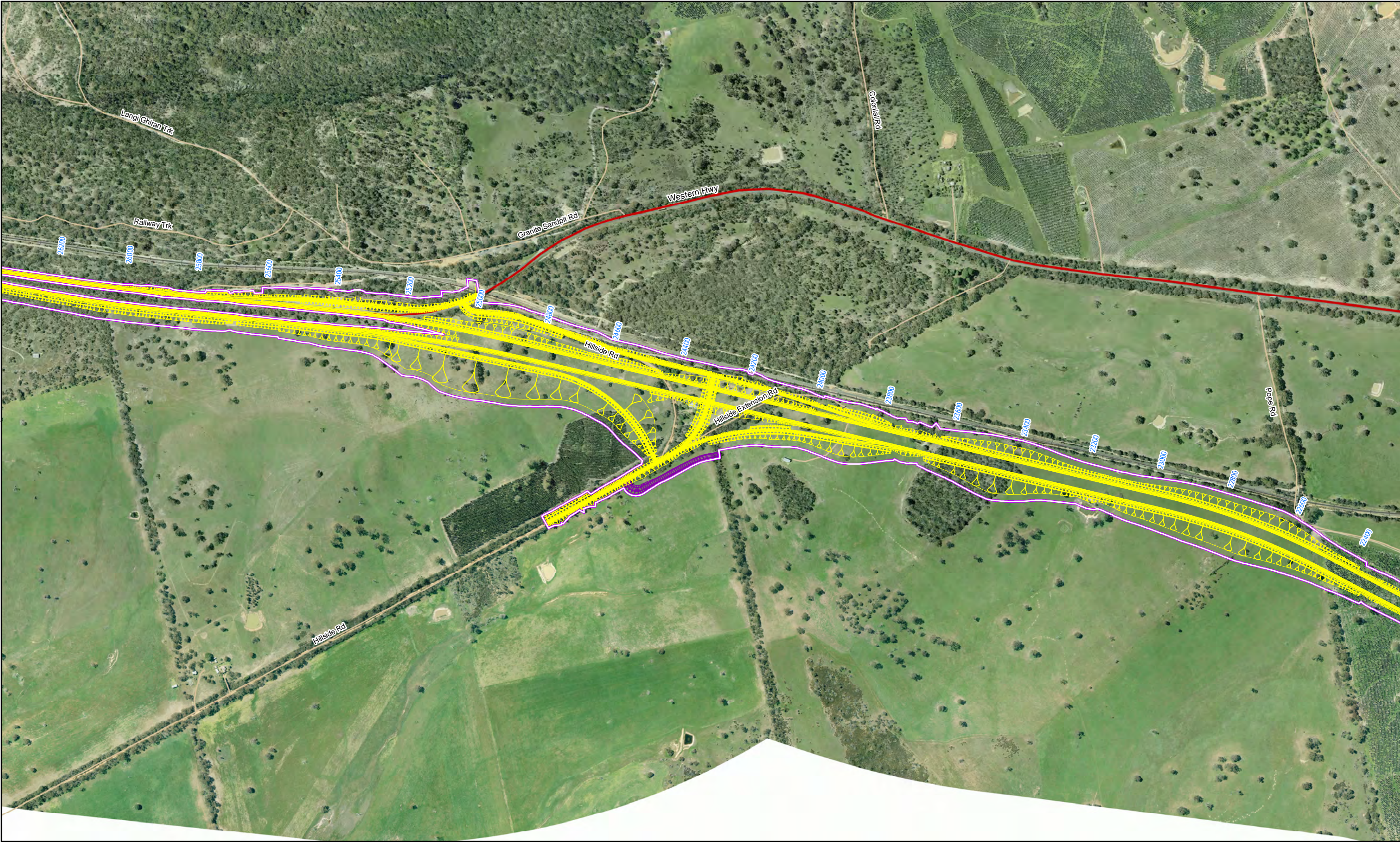




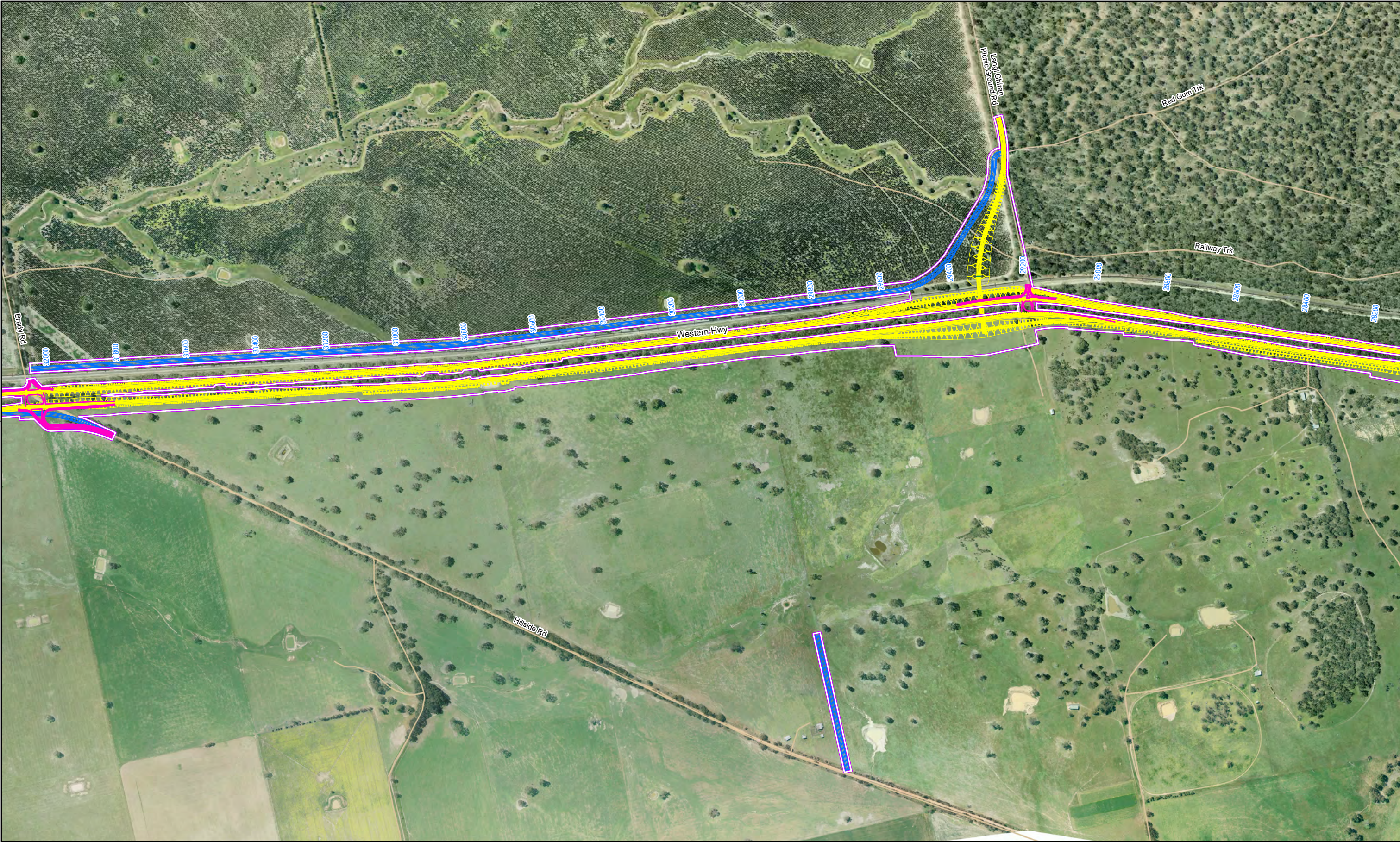


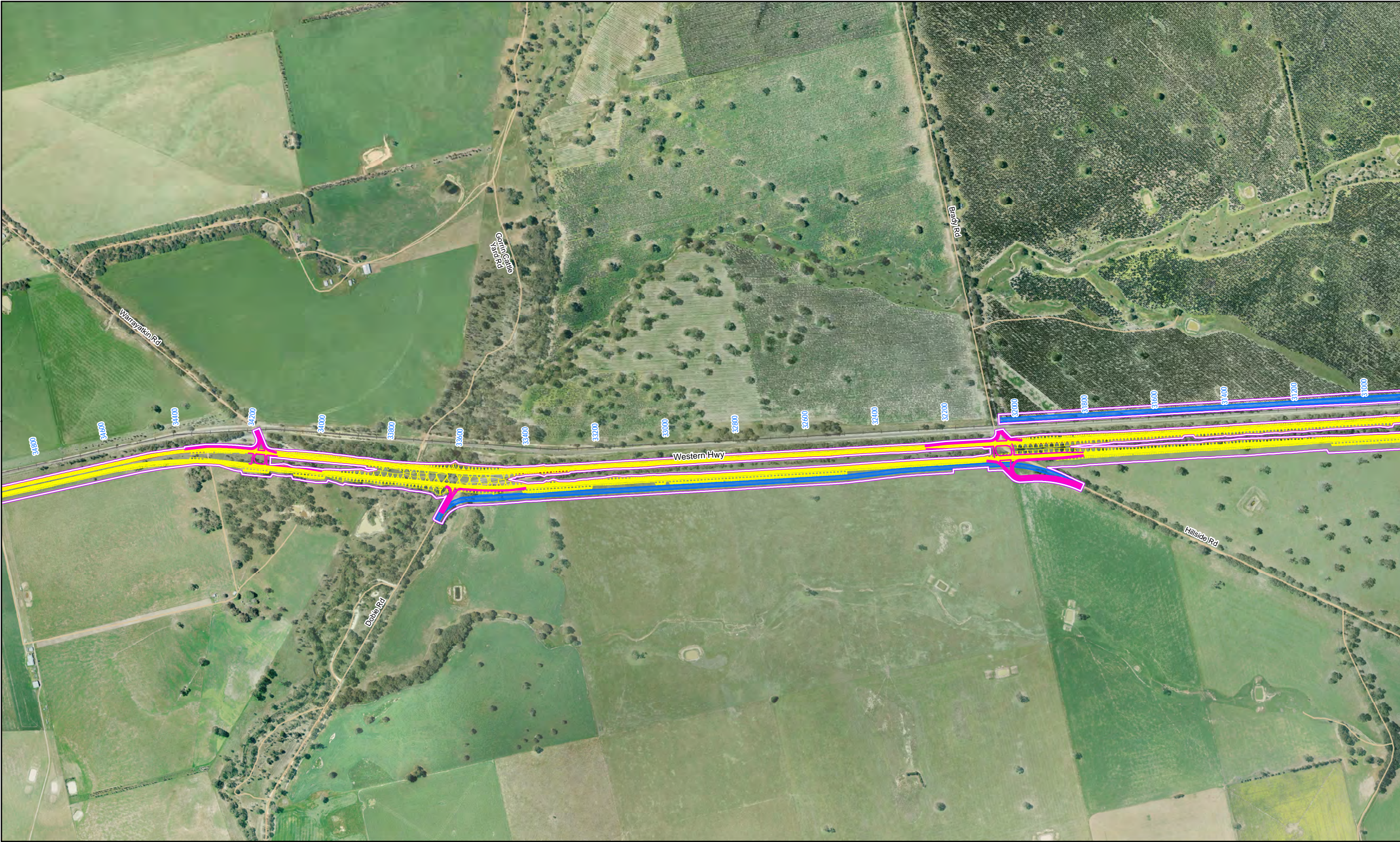














G:\3127558\GIS\Maps\Deliverables\Stage 2\RISK AND IMPACT ASSESSMENT\05_ALIGNMENTS_FOR_SPECIALISTS\3127558_S2_027_Recommended_Alignment_Option_2_FINAL_20120712_A3L_MB.mxd

180 Lonsdale Street Melbourne VIC 3000 Australia T 61 3 8687 8000 F 61 3 8687 8111 E melmail@ghd.com W www.ghd.com

© 2012. Whilst every care has been taken to prepare this map, GHD (and DATA CUSTODIAN) make no representations or warranties about its accuracy, reliability, completeness or suitability for any particular purpose and cannot accept liability and responsibility of any kind (whether in contract, tort or otherwise) for any expenses, losses, damages and/or costs (including indirect or consequential damage) which are or may be incurred by any party as a result of the map being inaccurate, incomplete or unsuitable in any way and for any reason.

Data source: GHD, 2012; DSE, VicMap, 2012, VicRoads, 2012. Created by: splaird

