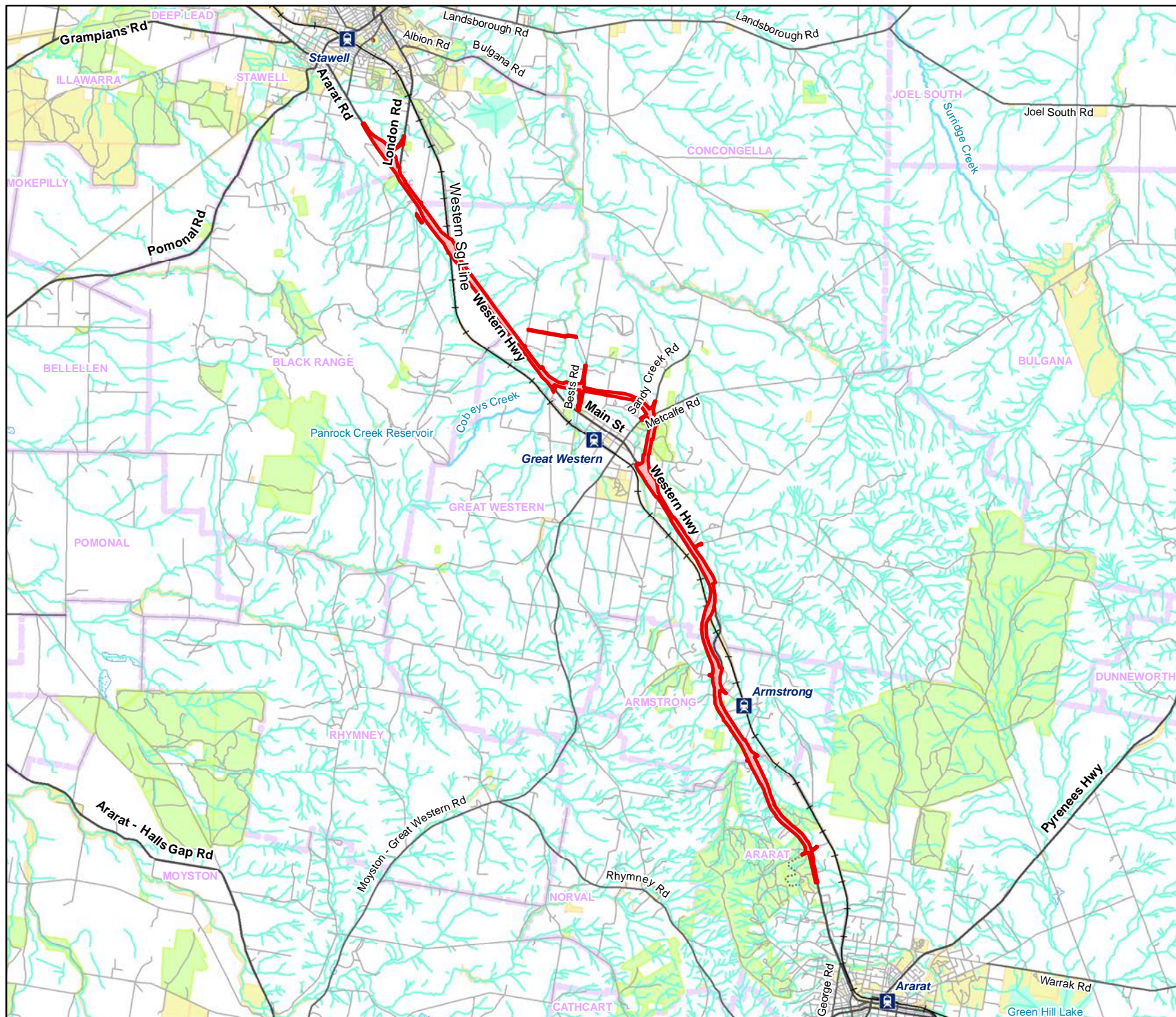


FIGURES

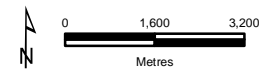


Legend

- Preferred Alignment
- Victoria Sea & Islands
- Railway Station
- Railway
- Freeway
- Major Road
- Collector Road
- Minor Road
- Proposed Road
- Walking Track
- Minor Watercourse
- Major Watercourse
- Permanent Waterbody
- Land Subject to Inundation
- Wetland/Swamp
- Parks and Reserves
- Commonwealth Land
- Crown Land
- Localities



Figure 1
Location of the study area
Western Highway,
Ararat to Stawell



ecology & heritage
partners

VicMap Data: The State of Victoria does not warrant the accuracy or completeness of information in this publication and any person using or relying upon such information does so on the basis that the State of Victoria shall bear no responsibility or liability whatsoever for any errors, faults, defects or omissions in the information.

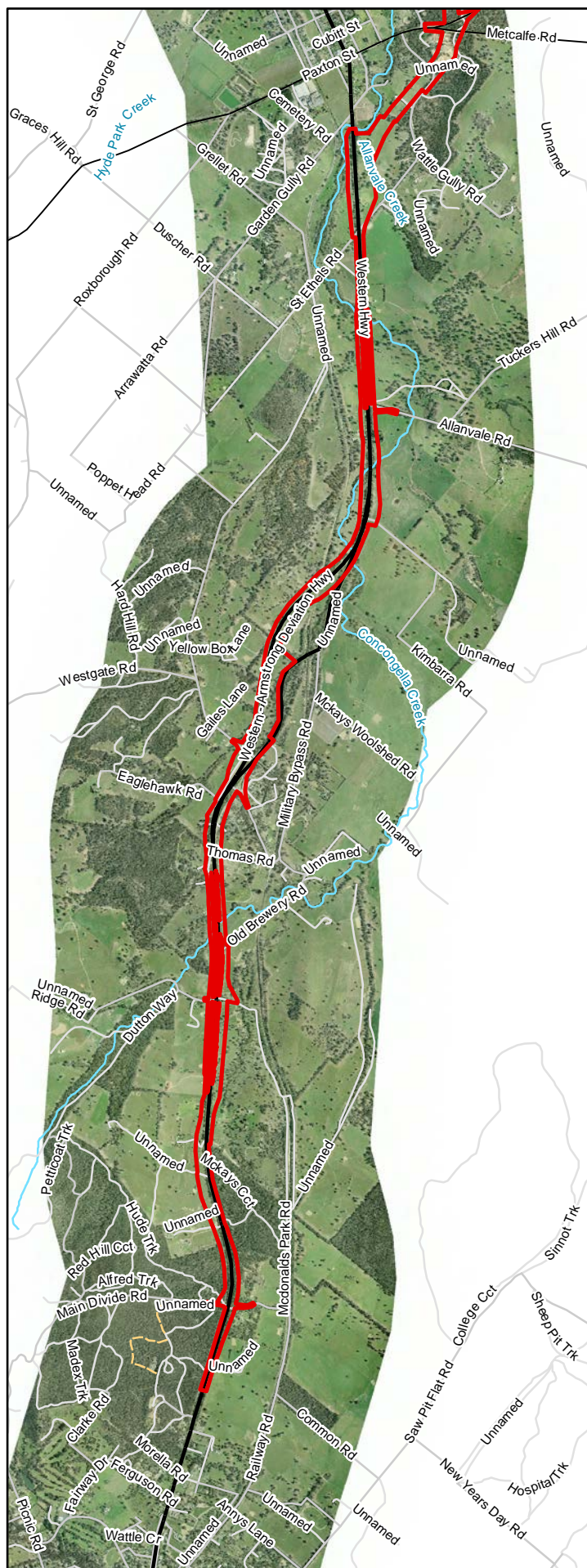
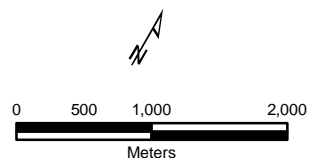


Figure 2
Proposed Alignment
Western Highway Project
Ararat to Stawell

Proposed Alignment




 ecology & heritage
 partners

VicMap Data: The State of Victoria does not warrant the accuracy or completeness of information in this publication and any person using or relying upon such information does so on the basis that the State of Victoria shall bear no responsibility or liability whatsoever for any errors, faults, defects or omissions in the information.

2625_Fig02_AlignmentOptions.mxd 19/09/2012 ALF



- Proposed Alignment
- Scattered Trees**
- Due Diligence
- ▲ MOT
- ▲ ST
- Threatened Flora Species**
- ★ Emerald-lip Greenhood
- ★ Trailing Hop-bush
- ▨ Degraded Treeless Vegetation
- EVC**
- Plains Grassy Woodland
- Grassy Woodland
- Creekline Grassy Woodland
- Heathy Woodland

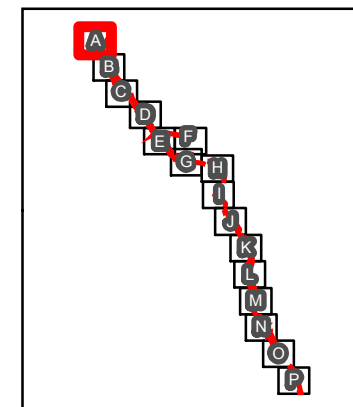
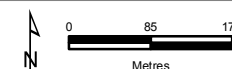
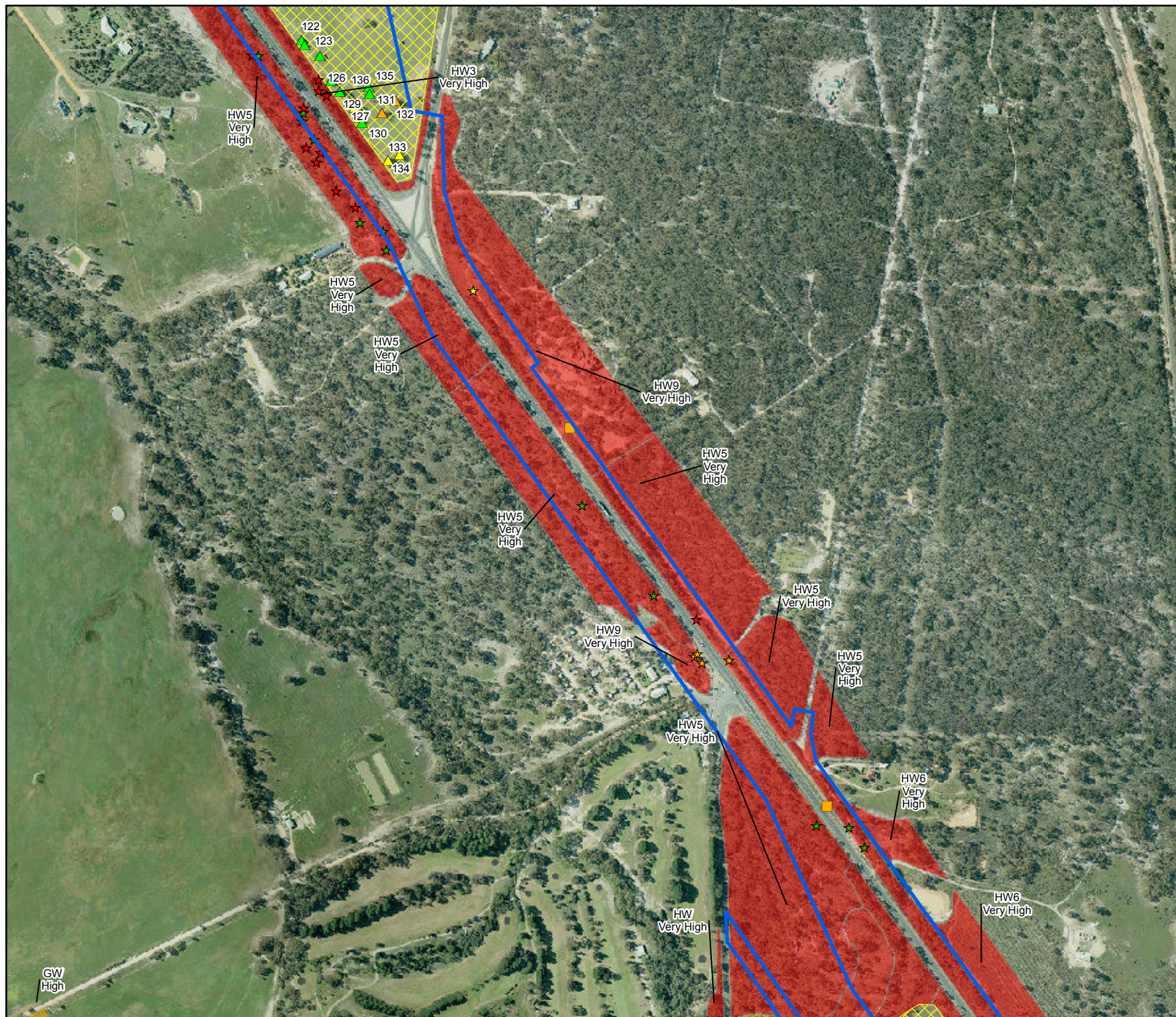


Figure 3A
Ecological Features
 Western Highway,
 Ararat to Stawell



VicMap Data: The State of Victoria does not warrant the accuracy or completeness of information in this publication and any person using or relying upon such information does so on the basis that the State of Victoria shall bear no responsibility or liability whatsoever for any errors, faults, defects or omissions in the information.



- Proposed Alignment**
- Scattered Trees**
- ▲ LOT
 - ▲ MOT
 - ▲ ST
- Threatened Fauna Species**
- Brown Toadlet
- Threatened Flora Species**
- ★ Emerald-lip Greenhood
 - ★ Rising Star
 - ★ Guinea-flower
 - ★ Rosemary Grevillea
 - ★ Trailing Hop-bush
- EVC**
- Degraded Treeless Vegetation
 - Grassy Woodland
 - Heathy Woodland

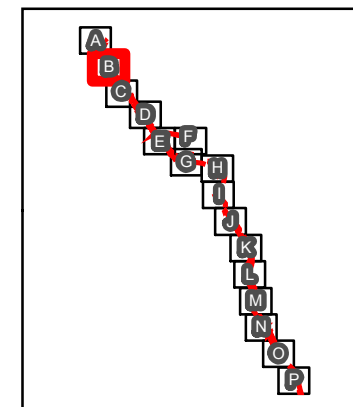
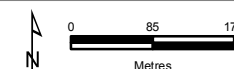
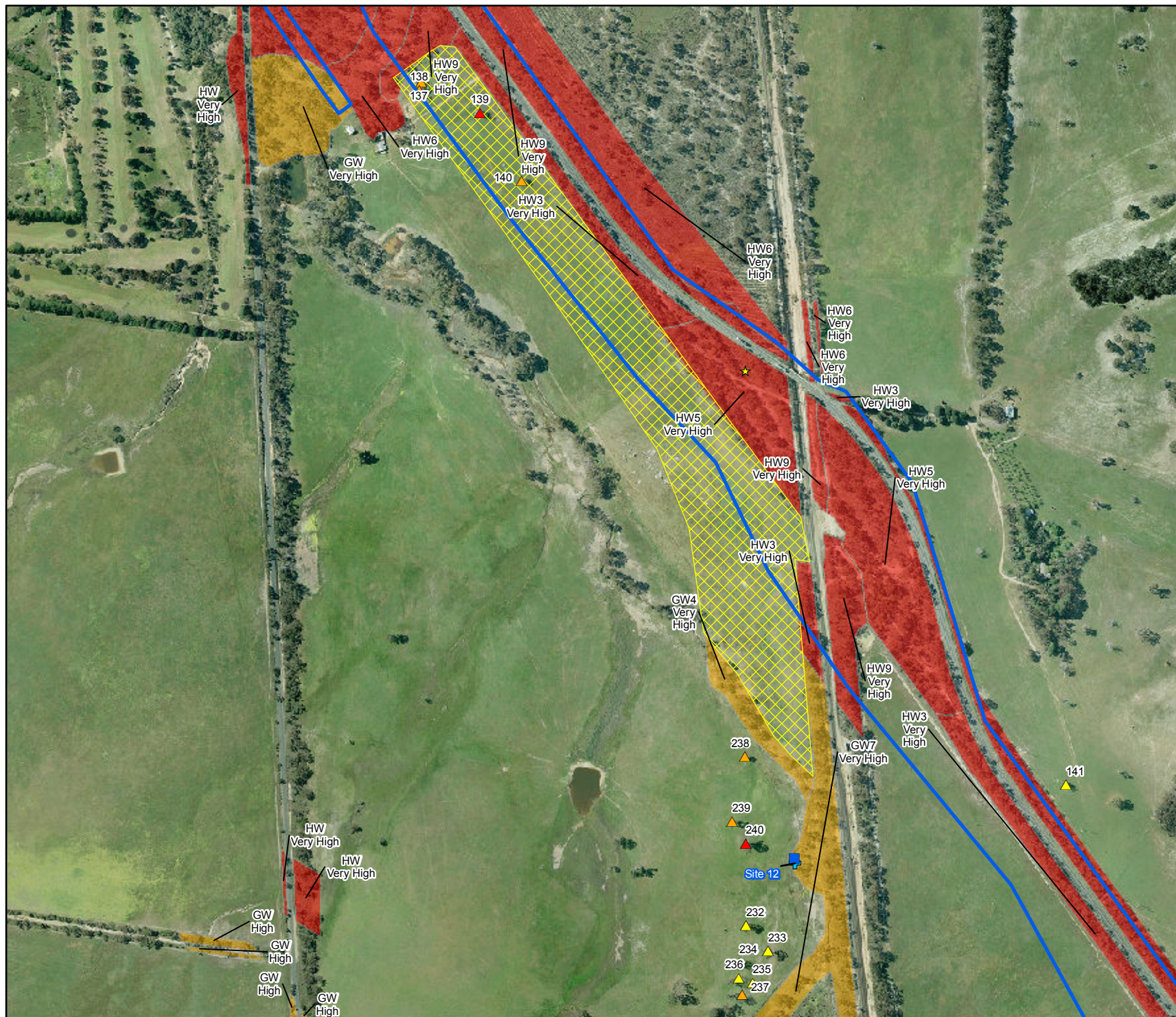


Figure 3B
Ecological Features
*Western Highway,
 Ararat to Stawell*



VicMap Data: The State of Victoria does not warrant the accuracy or completeness of information in this publication and any person using or relying upon such information does so on the basis that the State of Victoria shall bear no responsibility or liability whatsoever for any errors, faults, defects or omissions in the information.



- Proposed Alignment
- Scattered Trees**
 - ▲ VLOT
 - ▲ LOT
 - ▲ MOT
- Threatened Fauna Species**
 - Golden Sun Moth
- Threatened Flora Species**
 - ★ Rising Star
 - ★ Guinea-flower
- ⊕ Aquatic Survey Locations
- Degraded Treeless Vegetation**
 - ▨ Degraded Treeless Vegetation
- EVC**
 - Grassy Woodland
 - Heathy Woodland

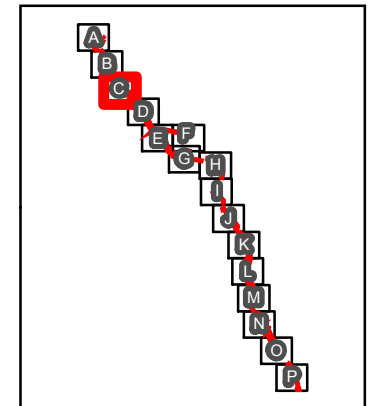
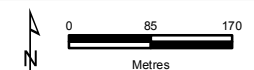


Figure 3C
Ecological Features
*Western Highway,
 Ararat to Stawell*



VicMap Data: The State of Victoria does not warrant the accuracy or completeness of information in this publication and any person using or relying upon such information does so on the basis that the State of Victoria shall bear no responsibility or liability whatsoever for any errors, faults, defects or omissions in the information.



- Proposed Alignment
- Scattered Trees**
 - ▲ VLOT
 - ▲ LOT
 - ▲ MOT
- Threatened Fauna Species**
 - Brown Toadlet
 - Brown Tree Creeper
 - Fat-tailed Dunnart
 - Golden Sun Moth
- + Aquatic Survey Locations
- ▨ Degraded Treeless Vegetation
- EVC**
 - Plains Grassy Woodland
 - Grassy Woodland
 - Creekline Grassy Woodland
 - Heathy Woodland

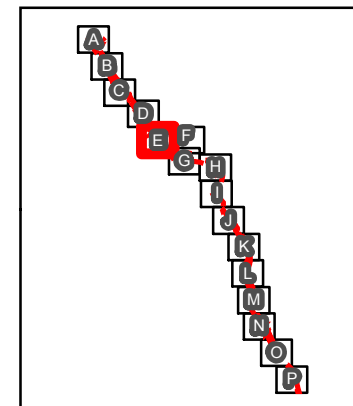


Figure 3E
Ecological Features
*Western Highway,
 Ararat to Stawell*



VicMap Data: The State of Victoria does not warrant the accuracy or completeness of information in this publication and any person using or relying upon such information does so on the basis that the State of Victoria shall bear no responsibility or liability whatsoever for any errors, faults, defects or omissions in the information.



Proposed Alignment

EVC

- Plains Grassy Woodland
- Creekline Grassy Woodland
- Woodland

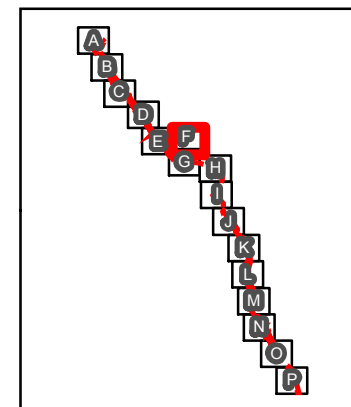
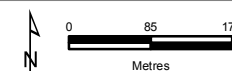


Figure 3F
Ecological Features
*Western Highway,
 Ararat to Stawell*




 ecology & heritage
 partners

VicMap Data: The State of Victoria does not warrant the accuracy or completeness of information in this publication and any person using or relying upon such information does so on the basis that the State of Victoria shall bear no responsibility or liability whatsoever for any errors, faults, defects or omissions in the information.



- Proposed Alignment
- Scattered Trees**
 - ▲ VLOT
 - ▲ LOT
 - ▲ MOT
 - ▲ ST
- Threatened Fauna Species**
 - Brown Toadlet
 - Golden Sun Moth
 - + Aquatic Survey Locations
- Degraded Treeless Vegetation**
 - ▨ Degraded Treeless Vegetation
- EVC**
 - Plains Grassy Woodland
 - Grassy Woodland
 - Creekline Grassy Woodland
 - Heathy Woodland

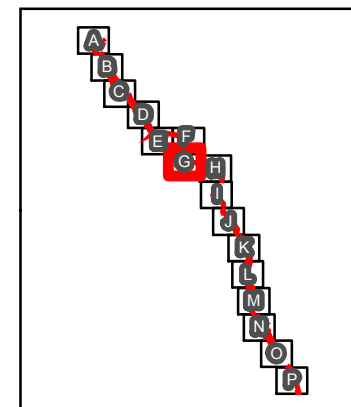
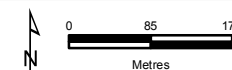
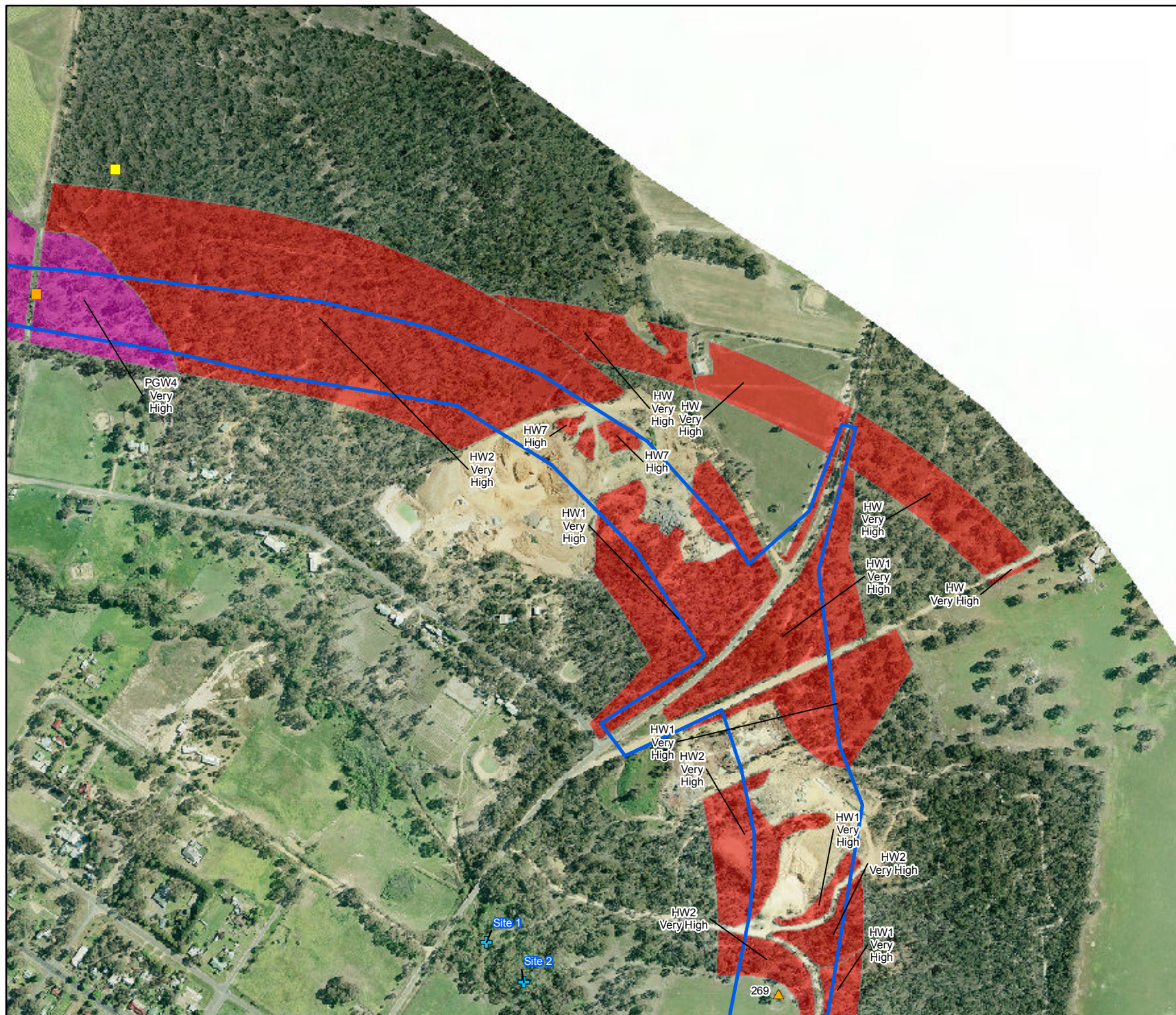


Figure 3G
Ecological Features
*Western Highway,
 Ararat to Stawell*



VicMap Data: The State of Victoria does not warrant the accuracy or completeness of information in this publication and any person using or relying upon such information does so on the basis that the State of Victoria shall bear no responsibility or liability whatsoever for any errors, faults, defects or omissions in the information.



- Proposed Alignment**
- Scattered Trees**
- ▲ LOT
- Threatened Fauna Species**
- Brown Toadlet
- Brown Treecreeper
- ⊕ Aquatic Survey Locations
- EVC**
- Plains Grassy Woodland
- Heathy Woodland

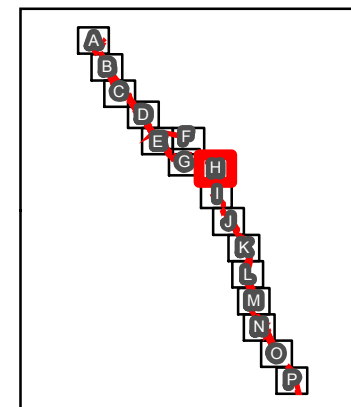
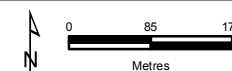
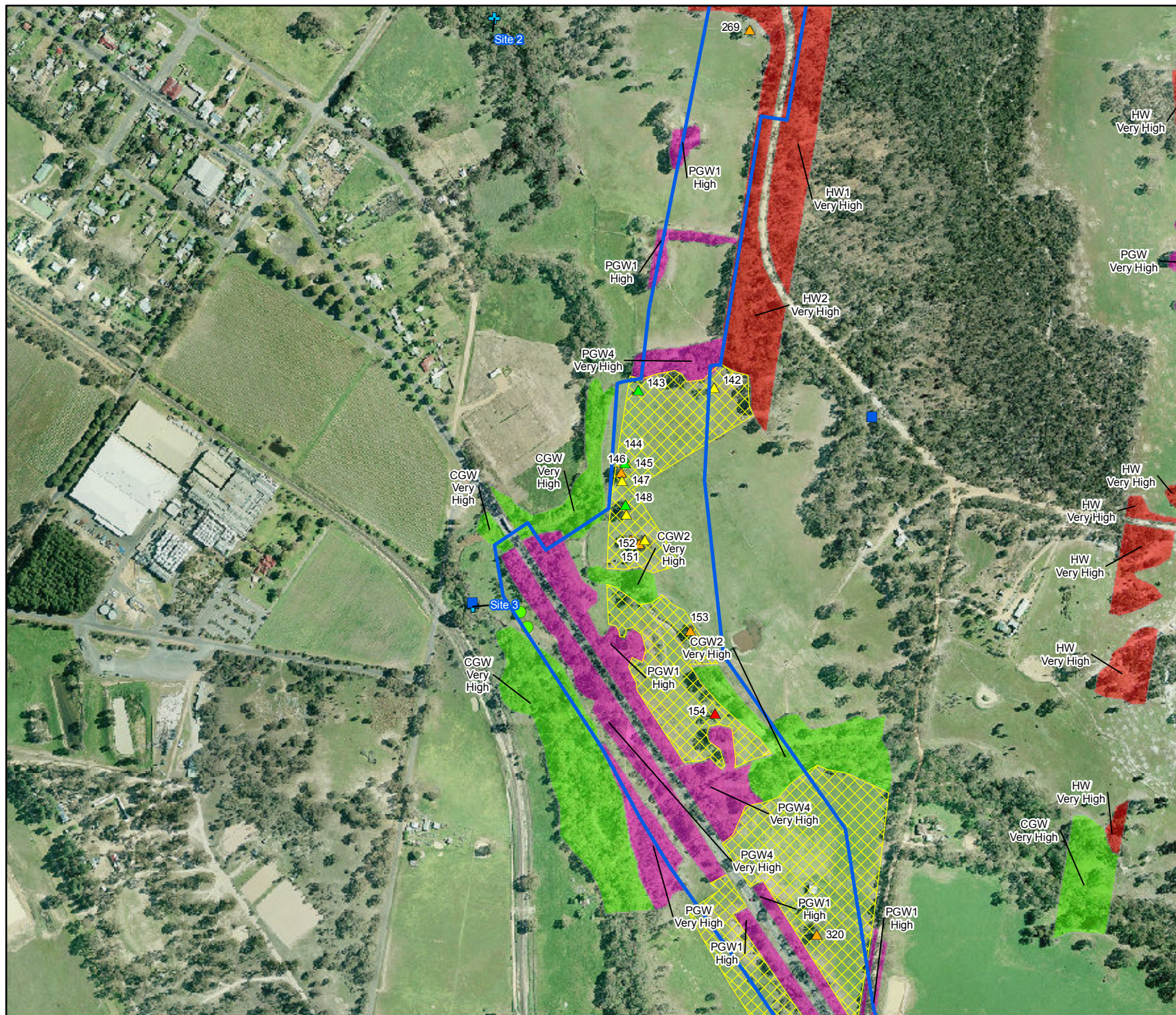


Figure 3H
Ecological Features
*Western Highway,
 Ararat to Stawell*



VicMap Data: The State of Victoria does not warrant the accuracy or completeness of information in this publication and any person using or relying upon such information does so on the basis that the State of Victoria shall bear no responsibility or liability whatsoever for any errors, faults, defects or omissions in the information.



- Proposed Alignment
- Scattered Trees
- ▲ Due Diligence
- ▲ LOT
- ▲ MOT
- ▲ ST
- ▨ Degraded Treeless Vegetation
- EVC**
 - Plains Grassy Woodland
 - Creekline Grassy Woodland
 - Heathy Woodland
- Threatened Fauna Species**
 - Golden Sun Moth
 - + Aquatic Survey Locations

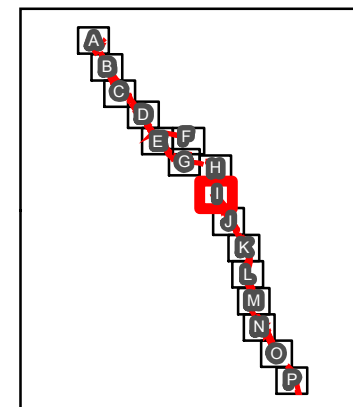


Figure 31
Ecological Features
*Western Highway,
 Ararat to Stawell*



VicMap Data: The State of Victoria does not warrant the accuracy or completeness of information in this publication and any person using or relying upon such information does so on the basis that the State of Victoria shall bear no responsibility or liability whatsoever for any errors, faults, defects or omissions in the information.

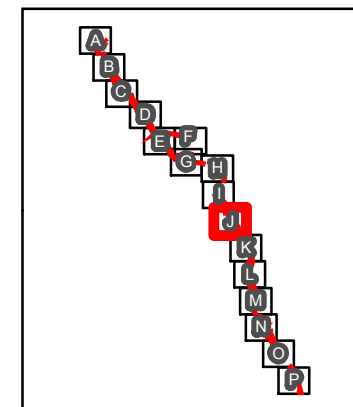
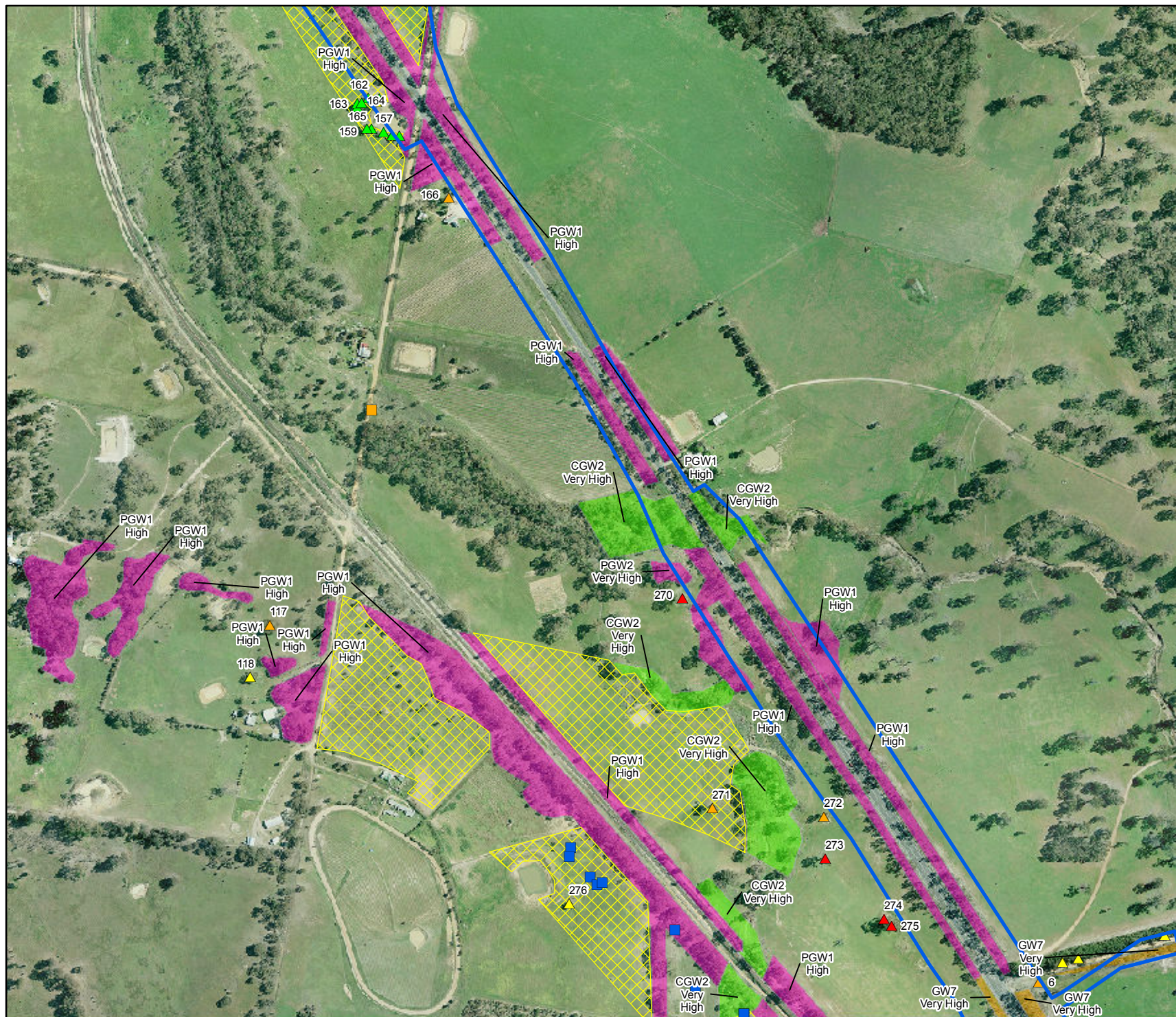
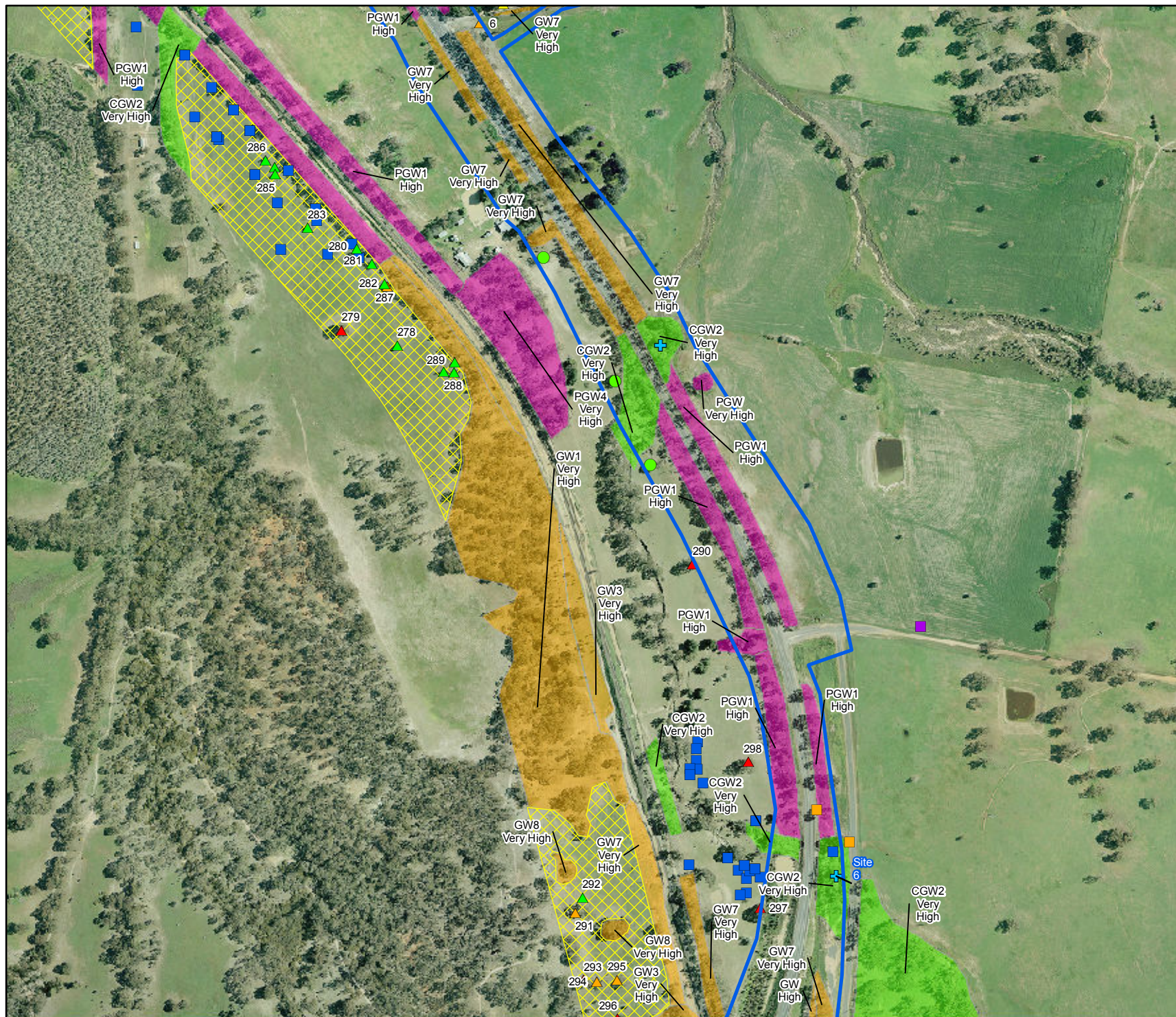


Figure 3J
Ecological Features
 Western Highway,
 Ararat to Stawell



VicMap Data: The State of Victoria does not warrant the accuracy or completeness of information in this publication and any person using or relying upon such information does so on the basis that the State of Victoria shall bear no responsibility or liability whatsoever for any errors, faults, defects or omissions in the information.



- Proposed Alignment**
- Scattered Trees**
- Due Diligence
 - ▲ VLOT
 - ▲ LOT
 - ▲ MOT
 - ▲ ST
- Threatened Fauna Species**
- Brown Toadlet
 - Golden Sun Moth
 - Little Button-quail
 - ⊕ Aquatic Survey Locations
- Degraded Treeless Vegetation**
- EVC**
- Plains Grassy Woodland
 - Grassy Woodland
 - Creekline Grassy Woodland

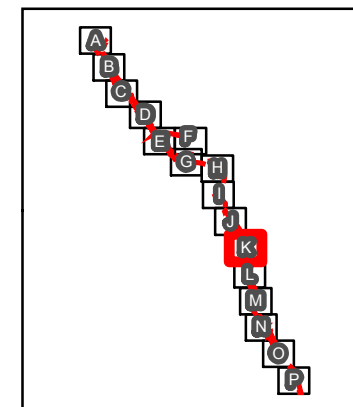
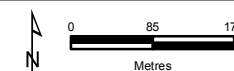


Figure 3K
Ecological Features
*Western Highway,
 Ararat to Stawell*



VicMap Data: The State of Victoria does not warrant the accuracy or completeness of information in this publication and any person using or relying upon such information does so on the basis that the State of Victoria shall bear no responsibility or liability whatsoever for any errors, faults, defects or omissions in the information.



- Proposed Alignment**
- Scattered Trees**
- Due Diligence
 - VLOT
 - LOT
 - MOT
 - ST
- Degraded Treeless Vegetation**
- EVC**
- Grassy Woodland
 - Creekline Grassy Woodland
- Threatened Flora Species**
- Rising Star
 - Guinea-flower
 - Aquatic Survey Locations

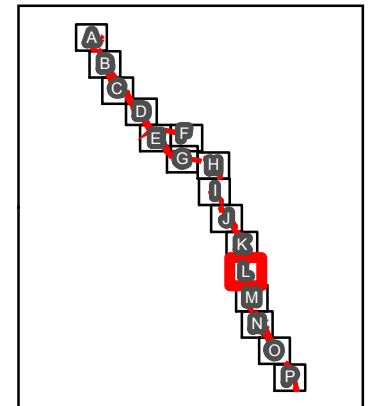
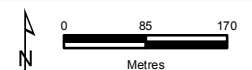


Figure 3L
Ecological Features
Western Highway,
Ararat to Stawell



VicMap Data: The State of Victoria does not warrant the accuracy or completeness of information in this publication and any person using or relying upon such information does so on the basis that the State of Victoria shall bear no responsibility or liability whatsoever for any errors, faults, defects or omissions in the information.



- Proposed Alignment**
 Proposed Alignment
- Scattered Trees**
 MOT
- Threatened Fauna Species**
 Brown Toadlet
- Threatened Flora Species**
 Rising Star
 Guinea-flower
- EVC**
 Grassy Woodland
 Creekline Grassy
 Woodland

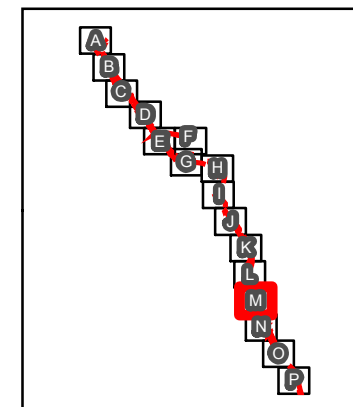
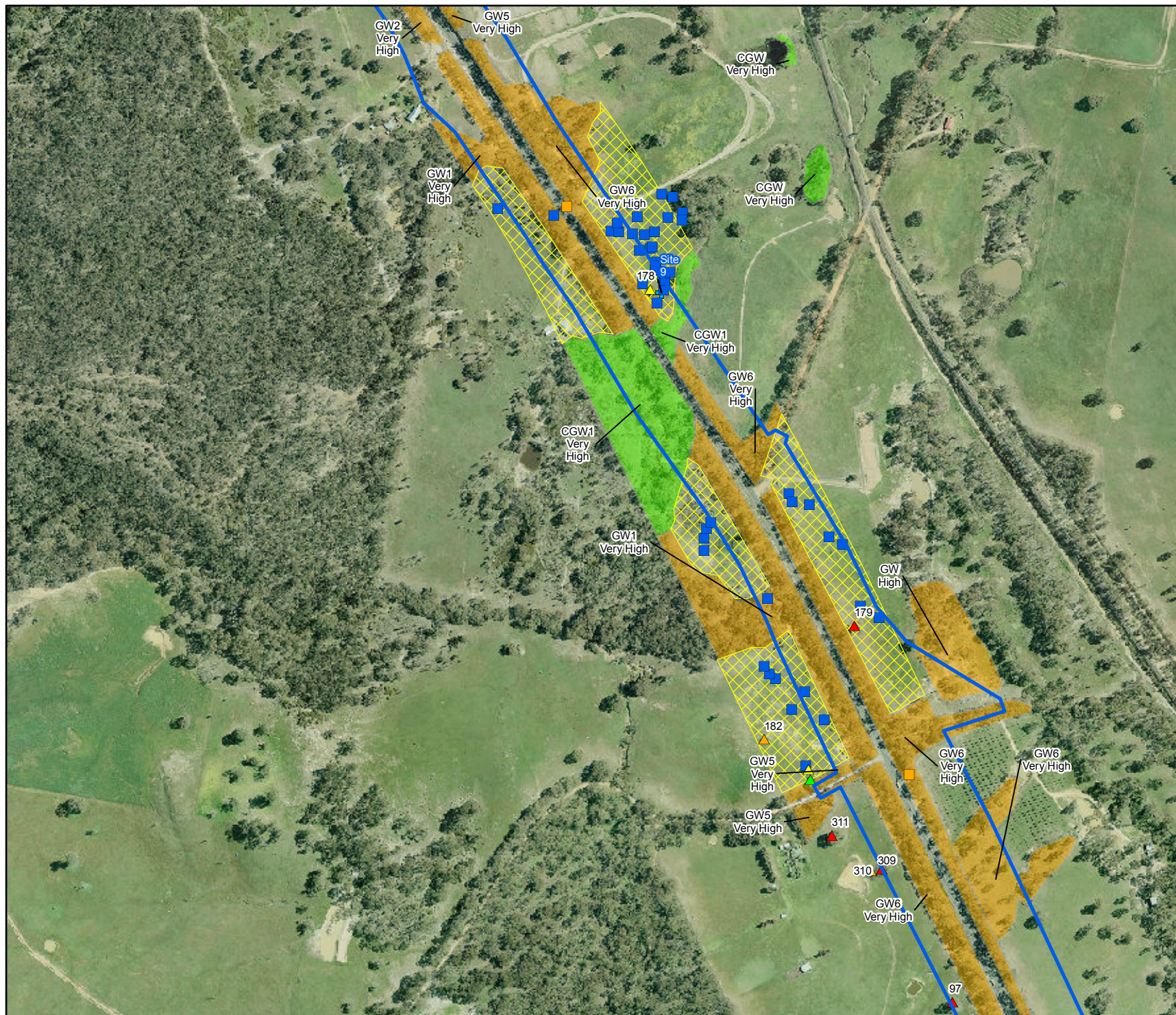


Figure 3M
Ecological Features
*Western Highway,
 Ararat to Stawell*



VicMap Data: The State of Victoria does not warrant the accuracy or completeness of information in this publication and any person using or relying upon such information does so on the basis that the State of Victoria shall bear no responsibility or liability whatsoever for any errors, faults, defects or omissions in the information.



- Proposed Alignment
- Scattered Trees**
 - ▲ VLOT
 - ▲ LOT
 - ▲ MOT
 - ▲ ST
- Degraded Treeless Vegetation**
 - ▨ Degraded Treeless Vegetation
- EVC**
 - ▨ Grassy Woodland
 - ▨ Creekline Grassy Woodland
- Threatened Fauna Species**
 - Brown Toadlet
 - Golden Sun Moth
 - + Aquatic Survey Locations

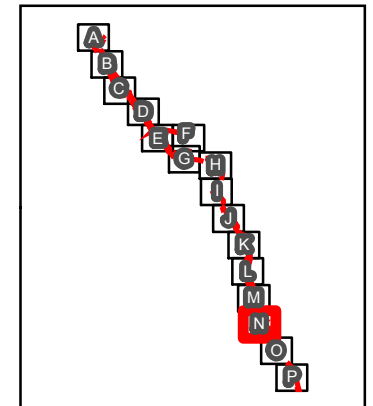
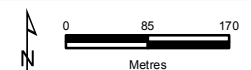


Figure 3N
Ecological Features
*Western Highway,
 Ararat to Stawell*



VicMap Data: The State of Victoria does not warrant the accuracy or completeness of information in this publication and any person using or relying upon such information does so on the basis that the State of Victoria shall bear no responsibility or liability whatsoever for any errors, faults, defects or omissions in the information.



- Proposed Alignment
- Scattered Trees**
 - ▲ VLOT
 - ▲ LOT
 - ▲ MOT
 - ▲ ST
- Threatened Fauna Species**
 - Fat-tailed Dunnart
 - Golden Sun Moth
- Threatened Flora Species**
 - ★ Emerald-lip Greenhood
- ▨ Degraded Treeless Vegetation
- EVC**
 - Grassy Woodland

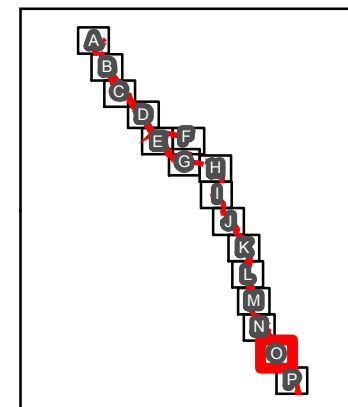


Figure 30
Ecological Features
*Western Highway,
 Ararat to Stawell*



VicMap Data: The State of Victoria does not warrant the accuracy or completeness of information in this publication and any person using or relying upon such information does so on the basis that the State of Victoria shall bear no responsibility or liability whatsoever for any errors, faults, defects or omissions in the information.



- Proposed Alignment**
- Scattered Trees**
- ▲ VLOT
 - ▲ LOT
- Threatened Fauna Species**
- Brown Toadlet
 - Brush-tailed Phascogale
- Threatened Flora Species**
- ★ Emerald-lip Greenhood
 - ★ Rosemary Grevillea
- EVC**
- Degraded Treeless Vegetation
 - Grassy Woodland
 - Grassy Dry Forest

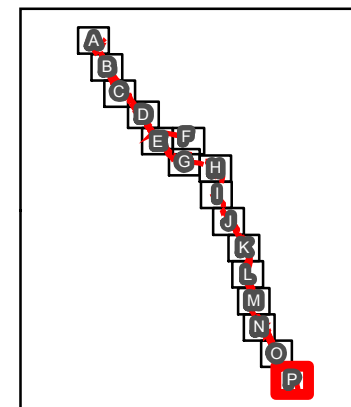


Figure 3P
Ecological Features
*Western Highway,
 Ararat to Stawell*



VicMap Data: The State of Victoria does not warrant the accuracy or completeness of information in this publication and any person using or relying upon such information does so on the basis that the State of Victoria shall bear no responsibility or liability whatsoever for any errors, faults, defects or omissions in the information.



Threatened Flora Species

- ★ Trailing Hop-bush
- ▬ Proposed Alignment
- Potential GSM Habitat

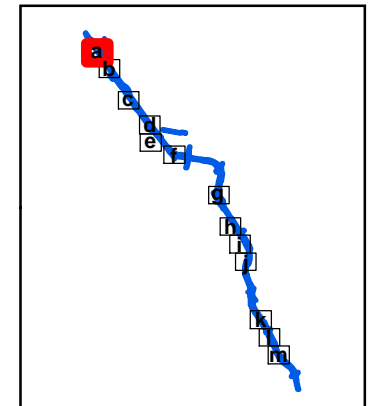
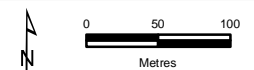


Figure 4a
Matters of National
Environmental Significance
Western Highway,
Ararat to Stawell



VicMap Data: The State of Victoria does not warrant the accuracy or completeness of information in this publication and any person using or relying upon such information does so on the basis that the State of Victoria shall bear no responsibility or liability whatsoever for any errors, faults, defects or omissions in the information.



Threatened Flora Species
 ★ Trailing Hop-bush
 [Blue Line] Proposed Alignment
 [Green Line] Potential GSM Habitat

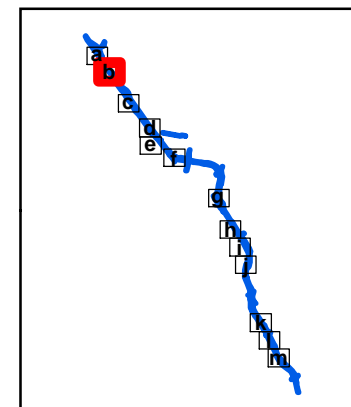


Figure 4b
Matters of National
Environmental Significant
Western Highway,
Ararat to Stawell



VicMap Data: The State of Victoria does not warrant the accuracy or completeness of information in this publication and any person using or relying upon such information does so on the basis that the State of Victoria shall bear no responsibility or liability whatsoever for any errors, faults, defects or omissions in the information.



- Threatened Fauna Species**
- Golden Sun Moth
 - ▭ Proposed Alignment
 - ▭ Potential GSM Habitat

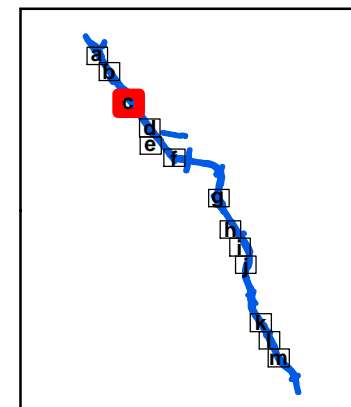


Figure 4c
Matters of National Environmental Significant
Western Highway, Ararat to Stawell



VicMap Data: The State of Victoria does not warrant the accuracy or completeness of information in this publication and any person using or relying upon such information does so on the basis that the State of Victoria shall bear no responsibility or liability whatsoever for any errors, faults, defects or omissions in the information.



- Threatened Fauna Species**
- Golden Sun Moth
 - ▭ Proposed Alignment
 - Potential GSM Habitat

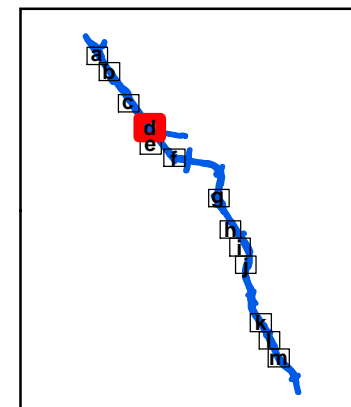


Figure 4d
Matters of National Environmental Significance
Western Highway, Ararat to Stawell



VicMap Data: The State of Victoria does not warrant the accuracy or completeness of information in this publication and any person using or relying upon such information does so on the basis that the State of Victoria shall bear no responsibility or liability whatsoever for any errors, faults, defects or omissions in the information.



Threatened Fauna Species

- Golden Sun Moth
- ▬ Proposed Alignment

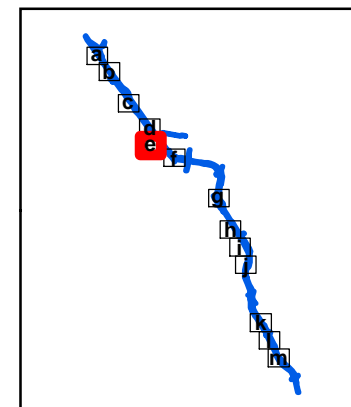


Figure 4e
Matters of National Environmental Significant
Western Highway, Ararat to Stawell



VicMap Data: The State of Victoria does not warrant the accuracy or completeness of information in this publication and any person using or relying upon such information does so on the basis that the State of Victoria shall bear no responsibility or liability whatsoever for any errors, faults, defects or omissions in the information.