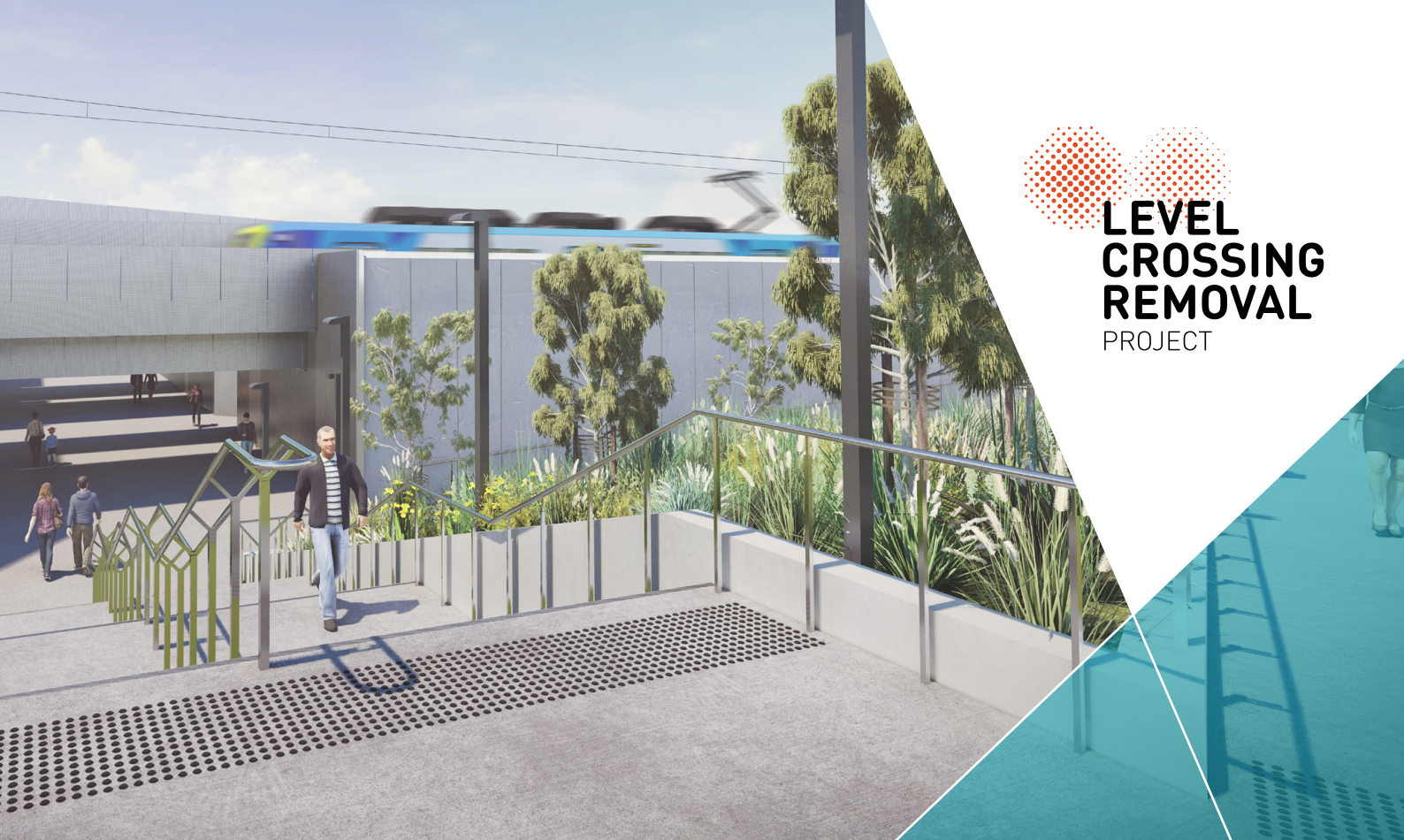




LEVEL CROSSING REMOVAL PROJECT



Pedestrian and cyclist underpass connecting to Aircraft Station. Artist impression only, subject to change.

MAJOR WORKS STARTING AT AIRCRAFT STATION

AVIATION ROAD
LAVERTON
APRIL 2021

New underpass and car park coming soon

In early March, construction started at Aircraft Station to build a pedestrian and cyclist underpass.

We'll also build 100 new and upgraded car spaces at Aircraft Station as part of the Car Parks for Commuters program.



Soon pedestrians and cyclists will have safer and easier access to Aircraft Station via a wide and well-lit underpass that will connect Maher Road and the car park on Triholm Avenue.

We will also complete landscaping and upgrades to the station forecourts, to refresh the precinct.

Major works have kicked off and the underpass and car park will be completed by late 2021.



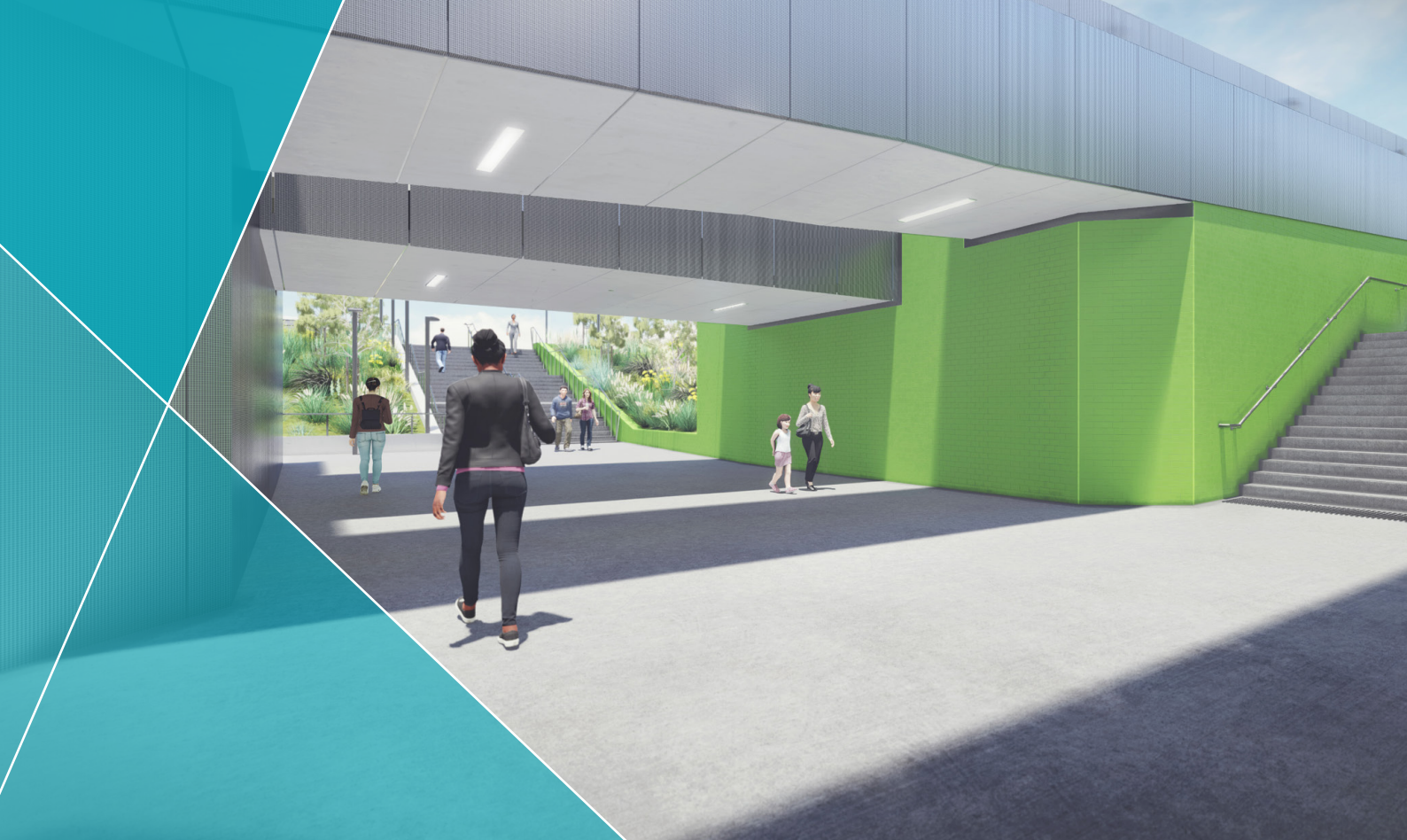
We removed the level crossing in 2019 by building a new road bridge over the rail line.



SIGN UP FOR PROJECT UPDATES
levelcrossings.vic.gov.au

Authorised and published by the Victorian Government, 1 Treasury Place, Melbourne





The new pedestrian and cyclist underpass will improve connections to Aircraft Station and make it safer and easier to move around the area.

BETTER STATION CONNECTIONS

We'll improve access to Aircraft Station, making it easier and safer for the community to move around the precinct.

New pedestrian and cyclist underpass

The well-lit new connection will be about 25 metres long, eight metres wide and three metres high.

Passengers coming from the south of the rail line will enter via the new station forecourt next to the upgraded car park. From the north, passengers will access the underpass via another new forecourt.

There will be three-metre-wide ramps at the north and south entrances, as well as in the middle of the underpass for easy access to the platforms.

Natural light will filter into the underpass from the gaps between the train tracks overhead, and it will be well-lit at night for the safety of the community.

New station forecourts and landscaping

The area around Aircraft Station will be revitalised with brand new station forecourts and landscaping that will complement the local area.

Both the northern and southern forecourts will have seating, shade, bike parking and garden beds. The new landscaping will be a mix of native and exotic plant species, which are drought-tolerant and consistent with landscaping in the local area.

Aircraft Station car parking

During community consultation in 2018, we heard that you'd like to see more formalised car parking at Aircraft Station.

As part of the stage two works, we will build 100 new and upgraded car spaces at Aircraft Station as part of the Car Parks for Commuters program.



**CAR PARKS
FOR COMMUTERS**

Benefits of the updated station precinct



Safer and easier access to the station

Passengers will have direct access to the platforms via the underpass, meaning no more waiting at safety gates.



Better connections for pedestrians and cyclists

Pedestrians and cyclists will have the option to cross the rail line using either the new underpass or the walking paths and bike lanes on the Maher Road bridge.



Direct access from the RAAF base to local businesses

People working, training or studying at the RAAF base will have a new direct connection to the local shops on Aviation Road.



Improved station look and feel

The new landscaping, station forecourt features and car park will revitalise the station precinct.



More car spaces

Providing more car parking at Aircraft Station will free up local streets and better utilise the space already available.



Future-proofing for other projects in the area

The underpass design allows for expansion of the rail corridor for the Geelong Fast Rail project.

Our new site office

In late 2020 we set up our site compound to the east of Aircraft Station. This area will be used for the duration of the project and includes site offices, staff parking and space for storing construction equipment and materials.

We've commenced major works, starting with building 650 metres of temporary track to the north of the freight rail line, which will allow these important freight services to continue during our works.

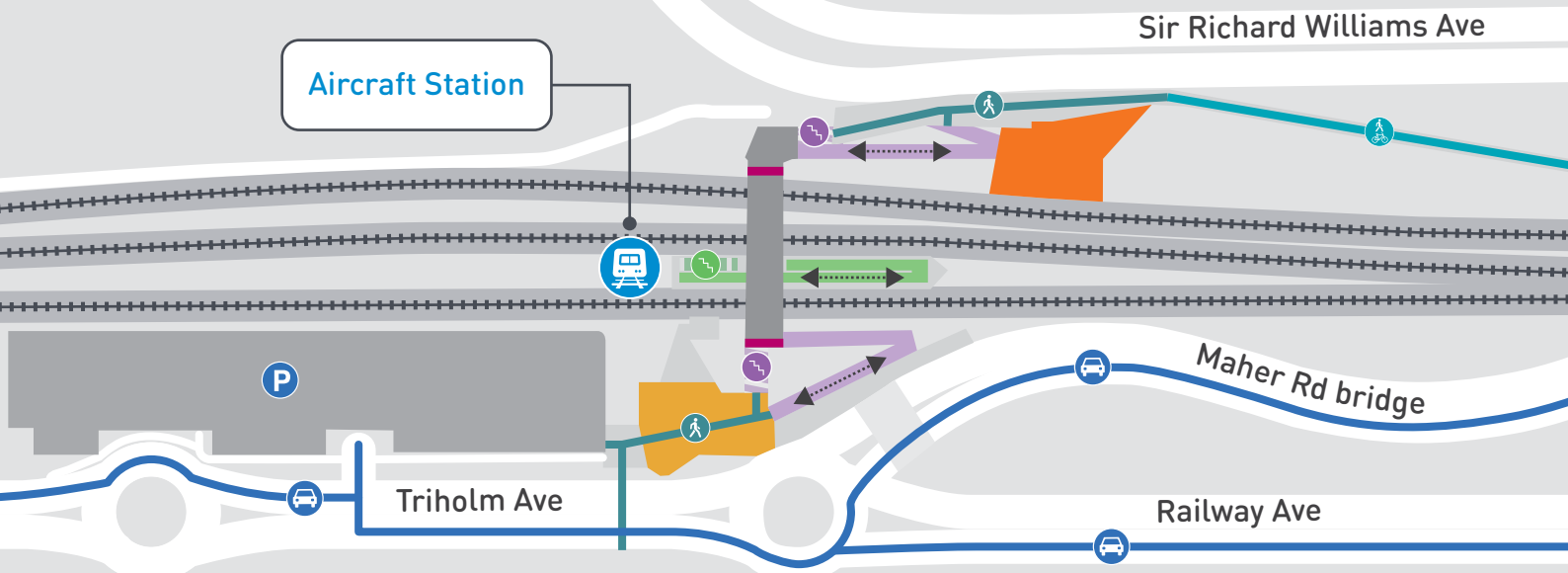
The pedestrian crossing on the north side of Aircraft Station, which leads to the RAAF base, will be closed from early February 2021 until late 2021 while we build the new underpass.



We've started major works on the new pedestrian and cyclist underpass.

Station precinct map

- Northern forecourt
- Southern forecourt
- Underpass entrance
- 100 new and upgraded car parking spaces
- Vehicle access
- Shared use path
- Pedestrian access
- Stairs to underpass
- Stairs to platforms
- Accessible ramps to station
- Accessible ramps to platforms



What to expect during works

To safely build the underpass, we'll need to close several car parking spaces from March. There will be times when we need to work 24 hours a day to complete piling and excavate hard rock beneath the underpass.

The large volume of soil that needs to be removed from the site will also temporarily result in more trucks on local roads.

In mid 2021, we'll start to build the 100 new and upgraded car spaces at Aircraft Station.

In late 2021, we'll complete the station forecourt upgrades and landscaping, and the underpass and car park will open.



Stay up to date

We have a dedicated team that will work with the community and rail passengers to keep you informed about what's happening during construction, and what disruptions may impact you.

You can stay up to date by subscribing for email updates at levelcrossings.vic.gov.au/contact/subscribe

Project timeline

- ✓ **2017**
 - Community consultation on level crossing removal design options
- ✓ **2018**
 - Road bridge design announced for level crossing removal
 - Community consultation
- ✓ **2019**
 - Start of major works
- ✓ **2020**
 - Landscaping works
- **Early 2021**
 - Underpass construction begins
 - Car park upgrade begins
- **Late 2021**
 - Underpass and car park complete

Call us on 1800 105 105 or email contact@levelcrossings.vic.gov.au

Please note that the timeline above is subject to change.



CONTACT US

contact@levelcrossings.vic.gov.au

1800 105 105

Level Crossing Removal Project
GPO Box 4509, Melbourne VIC 3001

Follow us on social media
[@levelcrossings](https://www.facebook.com/levelcrossings)



Translation service – For languages other than English, please call 9280 0780.

Please contact us if you would like this information in an accessible format.

If you need assistance because of a hearing or speech impairment, please visit relayservice.gov.au