



LEVEL CROSSING REMOVAL PROJECT

Beams lifted into place to connect the new South Gippsland Highway road bridge over the Pakenham line

PROJECT UPDATE

Bridging the gap at South Gippsland Highway

SOUTH GIPPSLAND HIGHWAY
DANDENONG SOUTH
APRIL 2021

We're removing 17 dangerous level crossings, including the one at South Gippsland Highway, Dandenong South as part of a \$16 billion investment to upgrade the Pakenham line that will improve safety, reduce congestion and allow more trains to run more often.

Major works continue to remove the South Gippsland Highway level crossing in Dandenong South by building a road bridge over the Pakenham line. A new intersection will connect South Gippsland Highway to Princes Highway, improving safety and traffic flow.

In February, we worked around the clock while trains weren't running to install

bridge beams, connecting the new road bridge over the Pakenham line.

Melbourne's south east is one of Australia's busiest manufacturing regions, which means that good freight connections are critical. Removing the South Gippsland Highway level crossing will improve freight connections in the area, supporting the local economy and jobs.

The new road bridge is being built parallel to South Gippsland Highway to keep traffic moving while we work.



Sign up to SMS updates

Text **SGH** to **0429 699 579** for SMS alerts about travel changes in the area.

Project benefits



More reliable travel times



Improved safety and traffic flow in Melbourne's south east



New walking and cycling connections and better access to traders



Supporting the local economy and jobs



SIGN UP FOR PROJECT UPDATES
levelcrossings.vic.gov.au

Authorised and published by the Victorian Government, 1 Treasury Place, Melbourne



What's next

In April, we'll install the last of 674 retaining wall panels.

We'll also begin laying asphalt on the north side of the road bridge, as well as completing the next sections of the new shared use path that will run along South Gippsland Highway.

Works continue on Princes Highway to prepare the new and safer intersection with South Gippsland Highway.

Changes to how you travel

Changes to travel are in place – view all the disruptions on our website at levelcrossings.vic.gov.au/disruptions.



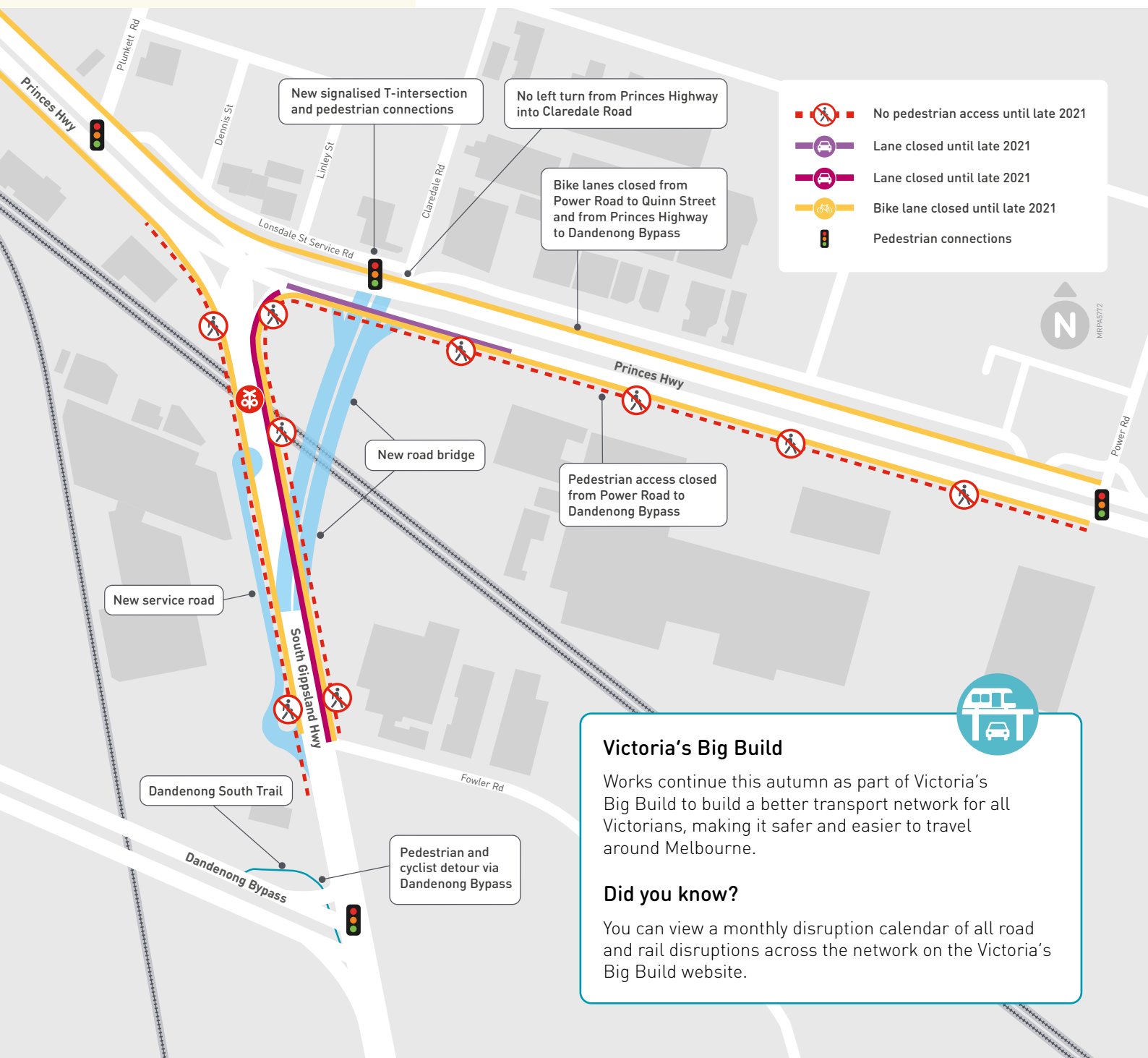
Road

- One southbound lane closed on South Gippsland Highway between Princes Highway and Fowler Road until late 2021.
- One westbound lane closed on Princes Highway, near the level crossing until late 2021.



Pedestrian and cyclist

- Detours in place. Sections of Princes Highway and South Gippsland Highway are closed to pedestrians and cyclists until late 2021.



PROGRESS IN PICTURES



Visit [@levelcrossings](#) to watch the video about how we did it.



Trucked to site - Beams were made locally in Melton and delivered to site overnight to minimise disruptions to the local community.



Setting up shop - To do the heavy lifting, we used the 750-tonne crane shared with our team at Greens Road, Dandenong South.



Heavy lifting - It took us nine hours to lift 17 beams into place, weighing 30 tonnes each.



Beaming over Dandenong South - Each beam took around 12 to 17 minutes to install, connecting the new road bridge over the Pakenham line.



Pouring the bridge deck - 180 cubic metres of concrete was poured to complete the bridge deck.



Installing safety screens - Safety screens were installed along the new bridge deck.



New shared use path and green space

A new shared use path will run from Princes Highway to the Dandenong Bypass, connecting to the Dandenong South Trail. This will improve walking and cycling connections and make it safer and easier to access local businesses.

Once the new road bridge opens, we'll create new green open space. The area will include public seating, lighting and extensive landscaping.

We'll provide more information once designs are finalised in the coming months.



Stay up to date

Sign up for regular email updates at levelcrossings.vic.gov.au/subscribe

For more information about the project, visit levelcrossings.vic.gov.au/projects

New public open space. Artist impression. Subject to change.



Thank you for your patience during our week-long construction blitz in February.

Project timeline



Early 2020

- Contract awarded
- Early works started
- Design finalised



Late 2020

Major construction starts



Early 2021

Bridge beams installed



Late 2021

Level crossing removed



2022

Project completed

**Timeline above subject to change*

CONTACT US

contact@levelcrossings.vic.gov.au

1800 105 105

Level Crossing Removal Project
GPO Box 4509, Melbourne VIC 3001

Follow us on social media
[@levelcrossings](https://www.facebook.com/levelcrossings)



Translation service – For languages other than English, please call 9280 0780.

Please contact us if you would like this information in an accessible format.

If you need assistance because of a hearing or speech impairment, please visit relayservice.gov.au