



STATE LIBRARY STATION COMMUNITY REFERENCE GROUP

CROSS YARRA PARTNERSHIP D&C

Kate Walshe, Communications Director, CYP D&C

Mary Parker, Director Communications & Creative, CYP Project Co

Melinda Kelly, Communications and Stakeholder Engagement Manager, CYP D&C

28 January 2022



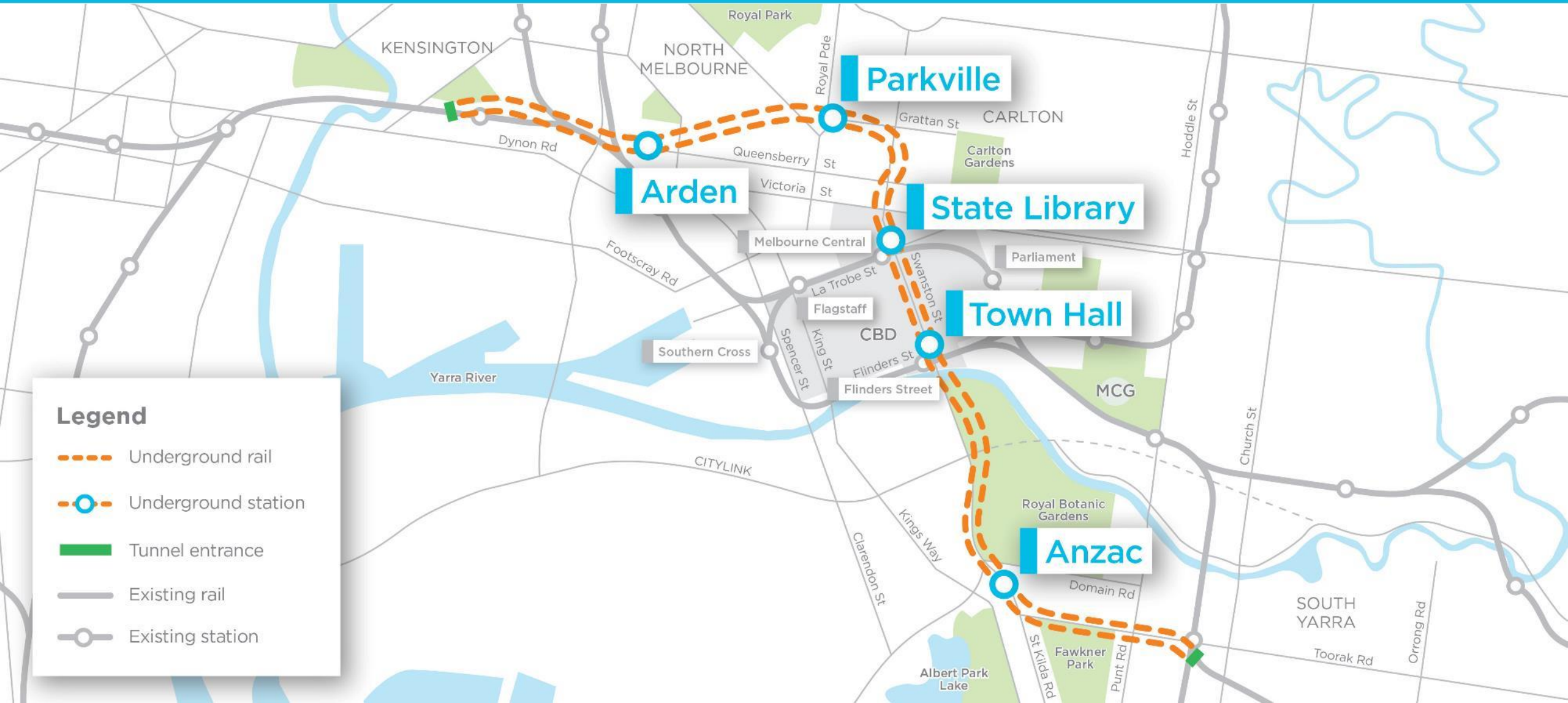
1. Precinct Updates
2. Creative Program Update
3. State Library Station Update
4. Development Plan (Amendment)



Precinct updates

Metro Tunnel Project

Project Alignment



Arden Station



- In station box, platform structure is complete, with last topping slab poured last week
- Lining works, and mechanical, electrical and plumbing installation ongoing



Parkville Station



- Station box roof slab completed
- Construction of the Royal Parade pedestrian underpass ongoing



- Works are now underway to excavate basement 4 and 5 at the Flinders Quarter OSD
- Tower crane footings are now in place on Swanston Street outside the City Square shed in preparation for tower crane installation commencing in March
- Structures and lining works are progressing within the central cavern and rail tunnels now that excavation is complete.



Anzac Station



- Base slab completed
- The acoustic shed that sits above the station box is currently being dismantled and removed from site
- Work continues on lining walls, column construction and firewalls





Creative Program Update



https://www.youtube.com/watch?v=345T_PRp7XQ

Baskerville Lane planting



Baskerville Lane plantings



Faces of Fringe



Miss First Nation for Midsumma



Jan 23 - MIDSUMMA – MISS FIRST NATIONS – SCOTT ALLEY



Fed Square roving performers



- Jan 27: The Wikimen
- Feb 3: Snorkelarama
- Feb 10: Punk Emus
- Feb 24: Hoodoo Mayhem
- March 3: Emilie Bloom



Submit your photo
for the 101 Victorians
project at
101victorians.com.au

Applications now open



**Creative
Program**



Questions



State Library Station Update

STATE LIBRARY STATION



Building the new State Library Station



Behind this hoarding, construction is underway. We're building a connection from Melbourne Central to the new State Library Station.



Melbourne Central Station connection
Under La Trobe Street where State Library Station meets Melbourne Central Station



The La Trobe Street site



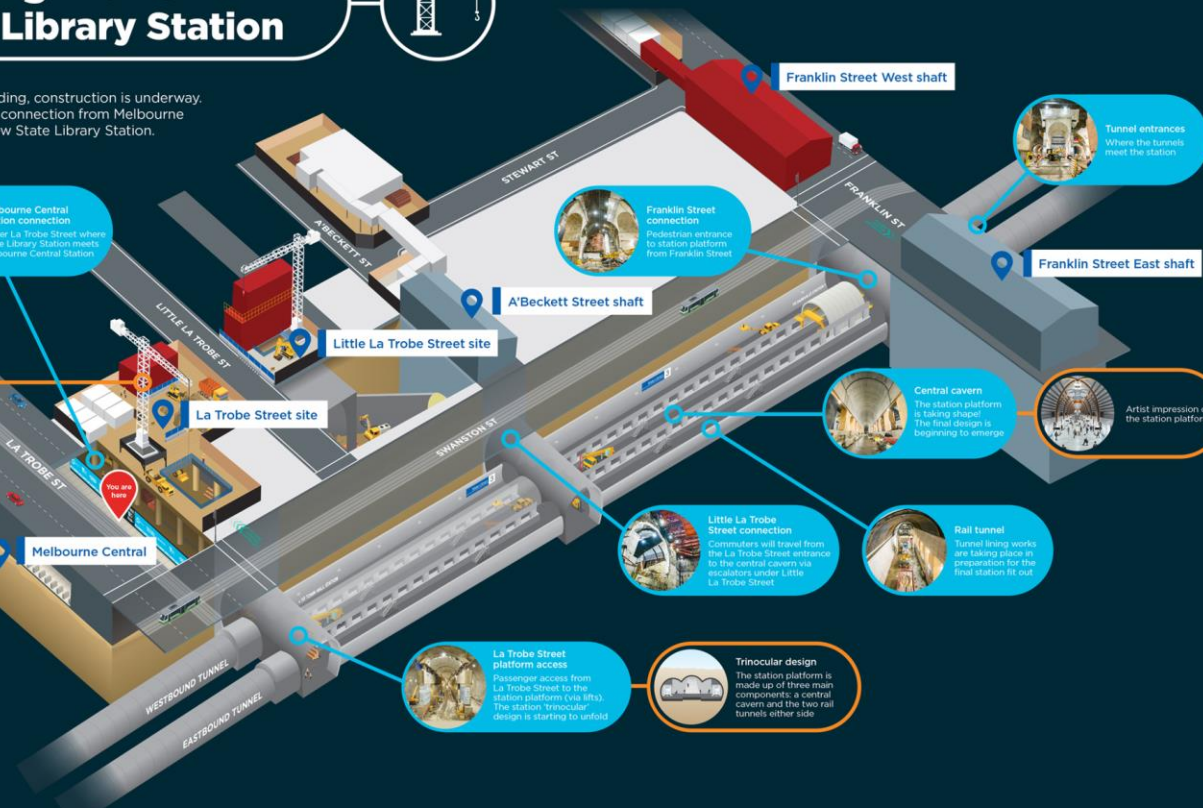
37,000 m³
of concrete poured



98,000 m³
of rock removed (about 39 Olympic swimming pools)



16,000 tonnes
of concrete reinforcement



Franklin Street connection
Pedestrian entrance to station platform from Franklin Street



Tunnel entrances
Where the tunnels meet the station



Franklin Street East shaft



Central cavern
The station platform is taking shape. The final design is beginning to emerge



Artist impression of the station platform



Little La Trobe Street connection
Commuters will travel from the La Trobe Street entrance to the central cavern via escalators under Little La Trobe Street



Rail tunnel
Tunnel lining works are taking place in preparation for the final station fit out



La Trobe Street platform access
Passenger access from La Trobe Street to the station platform (via lifts). The station 'trinoocular' design is starting to unfold



Trinoocular design
The station platform is made up of three main components: a central cavern and the two rail tunnels either side

Not to scale. Indicative only.

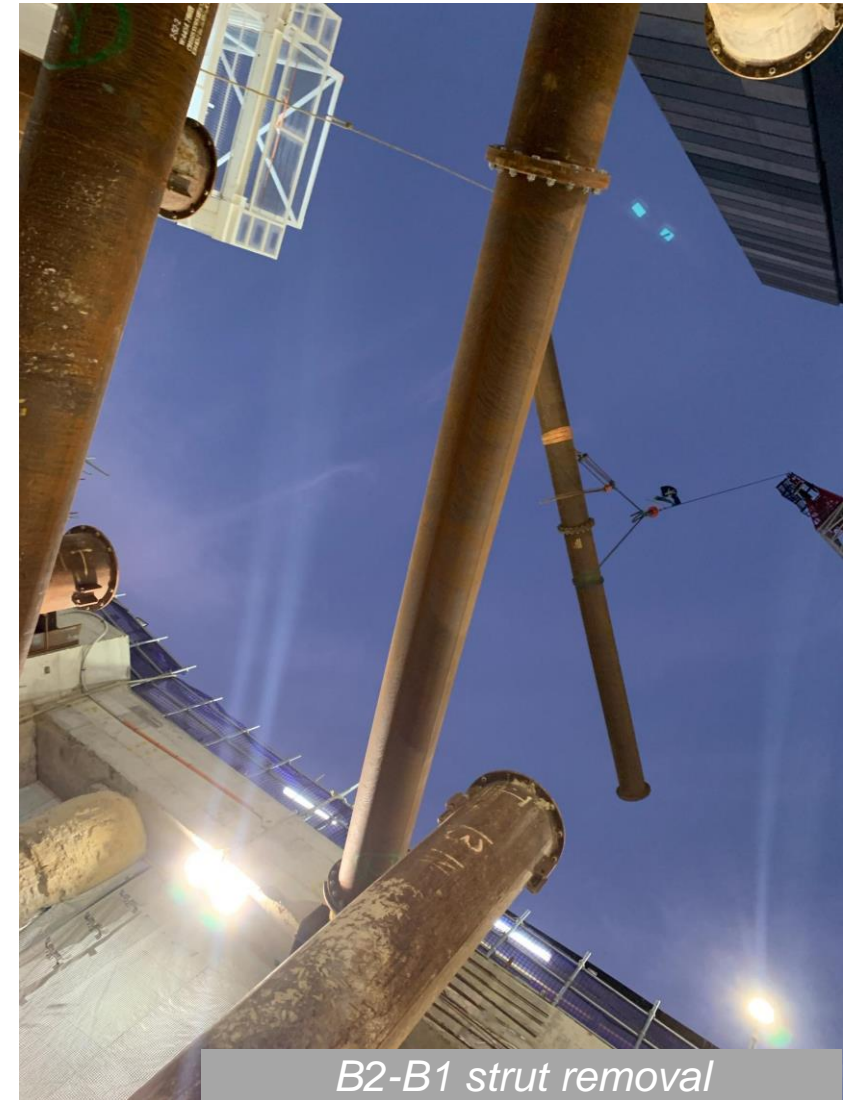
LA TROBE STREET SITE



LA TROBE STREET SITE



Core wall construction



B2-B1 strut removal



B2 slab completion

Shaft construction

(Excavation, excavated material removal, steel fixing, concrete pours and deliveries)

- Monday to Fridays, 7am to 3am
- Saturdays, 7am to 6pm

Temporary shaft removal

(Excavation using a hammer attachment)

- Monday to Fridays, 7am to 8pm
- Saturdays, 7am to 6pm

Concrete finishing works and oversized deliveries

- Monday to Saturdays, 10pm to 7am (as required)

Swanston Street concrete pump operation

- Monday to Sundays, 24 hours (as required)

Little La Trobe Street concrete pump operation

- Monday to Saturdays, 7am to 8pm

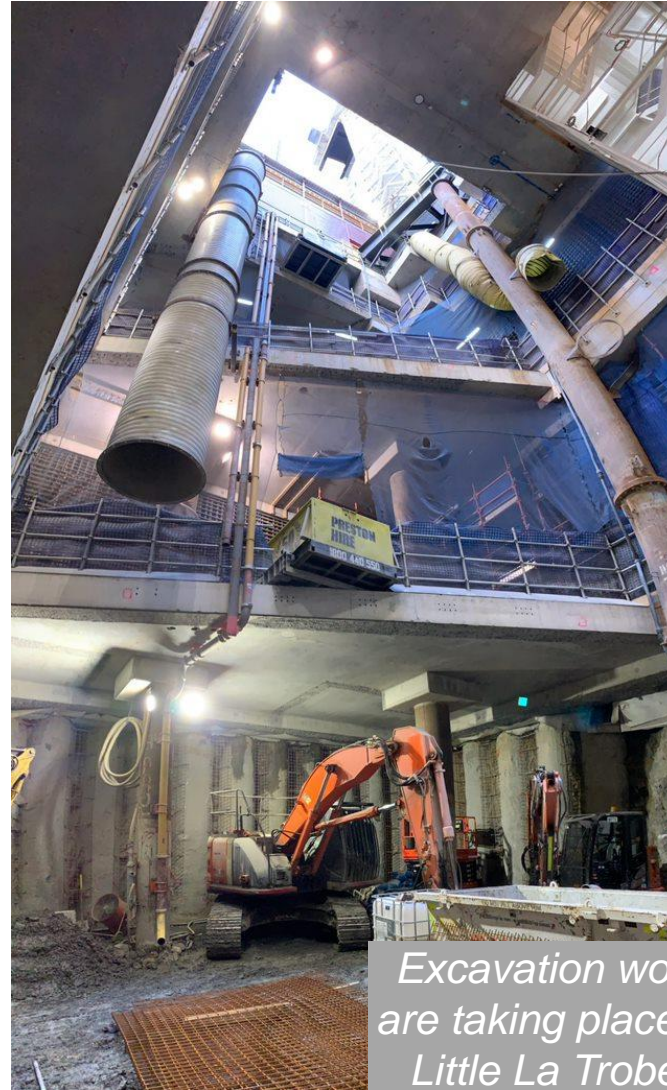


B3 level excavation

LITTLE LA TROBE STREET SITE



- Works to construct an adit underneath Little La Trobe Street are continuing
- Excavation is taking place at the B4 (final) level within the Little La Trobe Street shaft
- Major excavation works will be complete by mid-March. After this, works will commence from the bottom of the shaft up and will mostly involve concrete pours to line the shaft and internal walls.



Excavation works on B4 are taking place within the Little La Trobe St shaft



Shaft construction works

- Monday to Fridays, 7am to 10pm
- Saturdays, 7am to 6pm

Concrete finishing works and oversized deliveries

- Monday to Fridays, 10pm to 7am (as required)

Little La Trobe adit excavation

- Monday to Fridays, 24h until end of February.



Adit construction between Little La Trobe and La Trobe St sites

STRUCTURES AND LINING



View of a rail tunnel from station



Sidewall progress in eastbound tunnel

STRUCTURES AND LINING



- Central cavern lining is complete
- Eastbound arch lining scope is progressing well
- Westbound arch lining scope has commenced
- All four adits are progressing well
- Concrete pours are ongoing to construct the platform tunnel invert slab and sidewalls.



One of the last inverts about to be poured

STRUCTURES AND LINING



Arch reinforcement using a multi-purpose gantry



Completed arch concrete in the central cavern

FRANKLIN STREET SITES



B4 slab poured at Franklin Street west

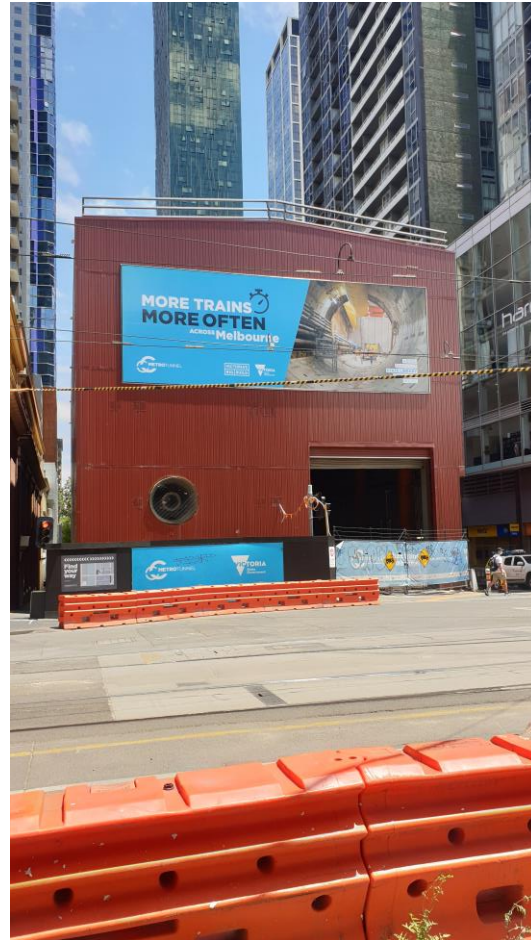


Strut removal at Franklin Street east

FRANKLIN STREET SITES



- B4 slab is complete
- Strut removal continuing
- Mechanical and electrical works have commenced for substations and overhead train wiring
- In February additional permanent works will take place in the Franklin adit to enable the cavern team to access a temporary loading platform
- Increase in deliveries to support the cavern team from March.



Installing reinforcement for internal walls at Franklin Street West

STATE LIBRARY STATION FLY THROUGH



Development Plan Amendment - Consultation

- Environment Effects Statement – included public exhibition of concept design
- Existing approved CBD North Precinct Development Plan
 - Public display of detailed design for CBD North 27/11 - 15/12/2017
 - Ministerial approval of CBD North on 15/04/2018
- Since approval, detailed design development has continued
- Development Plan Amendment consultation in February / March 2022

Questions