

Access changes

CRAIGIEBURN ROAD UPGRADE



We're upgrading Craigieburn Road to help you get home safer and sooner.

We're adding extra lanes on Craigieburn Road between Hume Highway and Mickleham Road as well as upgrading intersections and building better walking, cycling and public transport connections.

Changes to the way you travel

There will be access changes to Craigieburn Road. Once the upgrade is complete, most local roads and property accesses will be changed to left in and left out only. Right turns and U-turns will only be possible at nearby signalised intersections or dedicated U-turn bays.

Safety improvements

When we upgrade main roads by adding new lanes, it's important to restrict where cars can turn right (across multiple lanes) into or out of driveways and side roads. This greatly improves the traffic flow and safety by directing traffic to designated intersections and preventing drivers from attempting risky and uncontrolled right turns.

To further improve safety for road users and lower the risk and severity of crashes, when we widen Craigieburn Road, we'll install safety barriers along sections of the road.

Safe U-turn locations

The project will noticeably change the way you travel around your local area. As we'll restrict where cars can turn right across multiple lanes, drivers will need to make a U-turn at dedicated locations to access certain streets and properties.

Safe U-turn locations will be provided at the following intersections along Craigieburn Road:

- Hume Highway
- Hardy Avenue
- Hanson Road
- Bridgewater Road
- Kimberwood Drive
- Dorchester Street
- Lygon Drive
- Balyang Way
- Aitken Boulevard

- Aitken Boulevard at Craigieburn Junction
- Waterview Boulevard
- Vantage Boulevard and Highlander Drive
- Mickleham Road
- dedicated U-turn bays north, south and west at Mickleham Road.

Craigieburn Road service roads

As part of the upgrade, we'll change access permanently to Craigieburn Road service roads between:

- Rayfield Avenue and Plumpton Avenue
- Kimberwood Drive and Glade Avenue
- Dorchester Street and Kimberwood Drive
- Bridgewater Road and Clovelly Drive
- Balyang Way and Aitken Boulevard.

Image: U-turn from Whites Lane via Craigieburn Road



Sign up for updates

Subscribe for email and SMS updates at roadprojects.vic.gov.au/subscribe

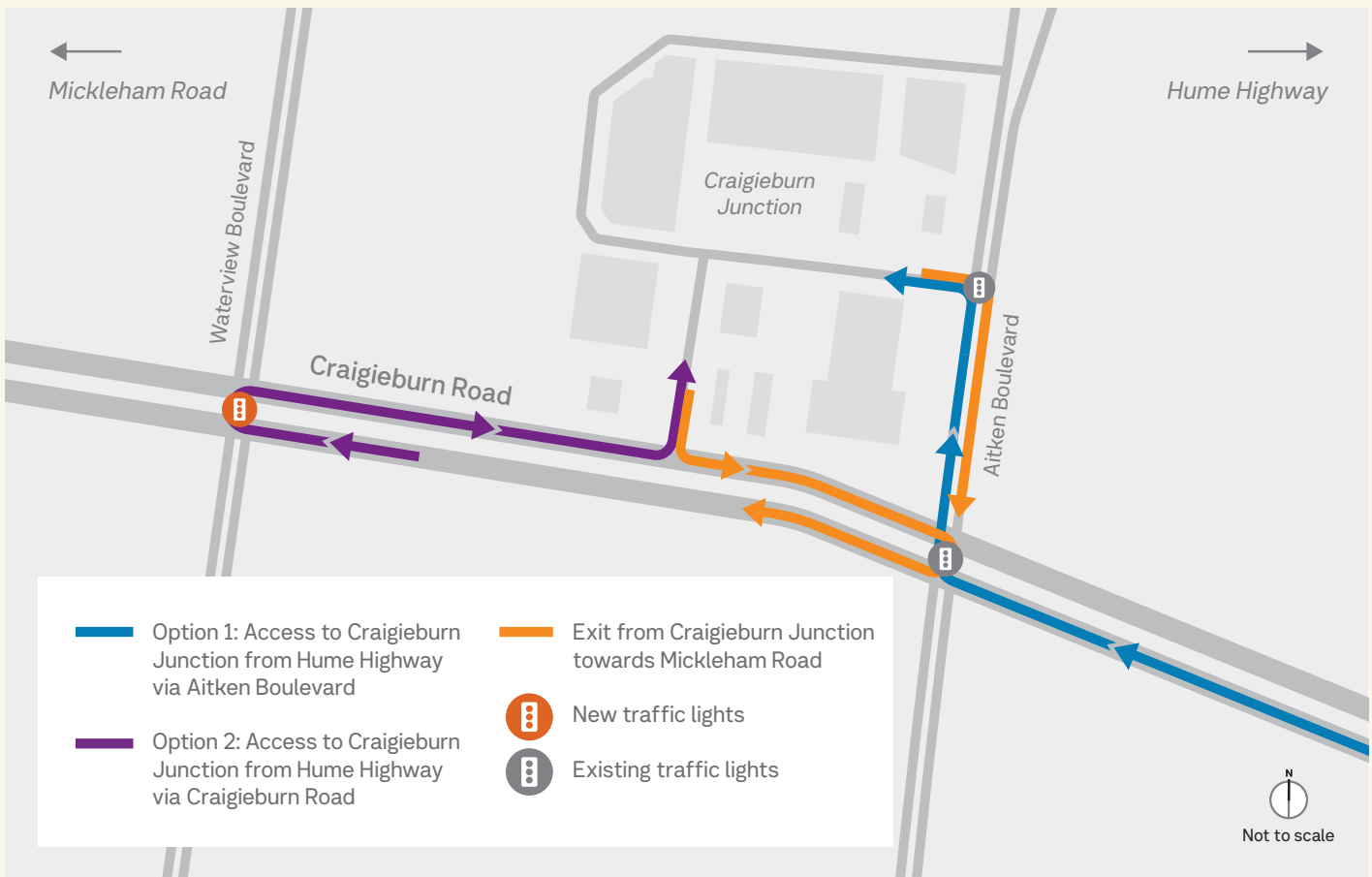
Businesses on Craigieburn Road

Craigieburn's business community plays an important role in generating and supporting economic prosperity for Melbourne's northern suburbs.

The Craigieburn Road Upgrade will support this growth by improving the frequency and reliability of the road network to make it easier for people to travel between the Hume Highway and Mickleham Road. It will also allow better traffic movement to move around Craigieburn and the

northern suburbs for commercial, retail, tourism, and events activities.

As with any other major project, there will be some changes to the way you access some businesses along Craigieburn Road.



Craigieburn Junction Shopping Centre

Access to Craigieburn Junction Shopping Centre on Craigieburn Road will become left in and left out only.

To enter Craigieburn Junction from the Hume Highway:

- head west along Craigieburn Road
- turn right onto Aitken Boulevard
- then turn left into the Craigieburn Junction carpark approximately 150 metres along Aitken Boulevard;

or

- continue along Craigieburn Road
- make a U-turn at the new traffic lights at Waterview Boulevard
- turn left into the entry near Hungry Jacks.

To exit the Craigieburn Junction and head towards Mickleham Road:

- turn right onto Aitken Boulevard
 - then turn right at the Aitken Boulevard and Craigieburn Road intersection;
- or
- turn left on to Craigieburn Road
 - then make a U-turn at the traffic lights at the Aitken Boulevard and Craigieburn Road intersection.



Craigieburn Plaza

Access to the Craigieburn Plaza will change at two key locations.

Access 1 (near Caltex)

We'll permanently remove the right turns onto Craigieburn Road from Craigieburn Plaza.

To head towards Mickleham Road:

- turn left onto Craigieburn Road
- make a U-turn at the next intersection.

A right turn from Craigieburn Road into the Plaza will be permitted when heading west from the Hume Highway.

Access 2: (near chemist)

Access will change to left in and left out only. To access the chemist entry from the Hume Highway, either:

- U-turn at the Hanson Road traffic lights, or
- turn right into Hanson Road, U-turn at the turning bay, and enter via the carpark entry.

To head towards Mickleham Road, exit at Hanson Road and turn right onto Craigieburn Road.

Safe walking and cycling access to Craigieburn Plaza and other local businesses will be via the:

- new walking and cycling path along both sides of Craigieburn Road
- new traffic lights at the Hardy Avenue intersection
- upgraded pedestrian crossing at Benston Street.

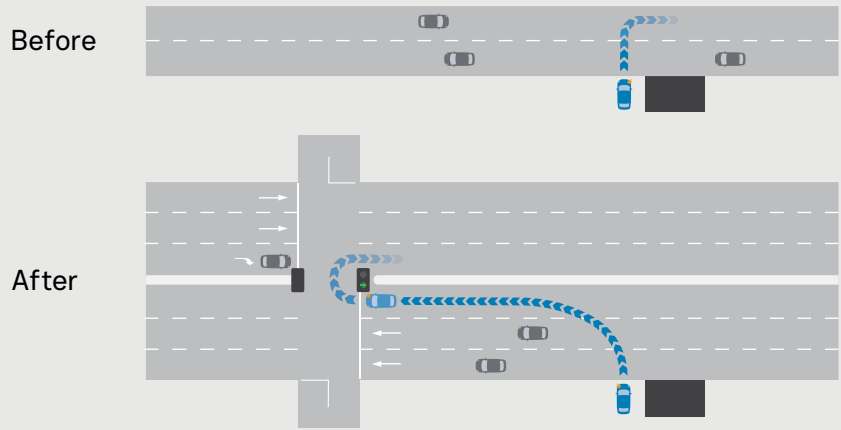


Direct driveway access

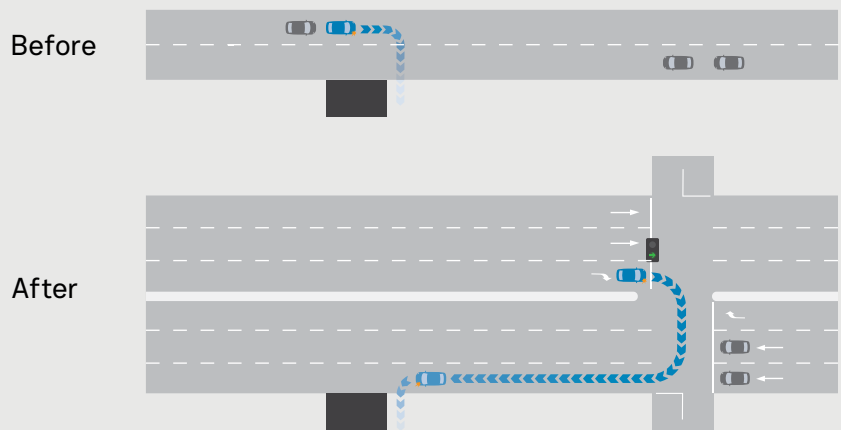
When you are entering or leaving Craigieburn Road from private property or a driveway you will only be able to turn left into the driveway or turn left out of the driveway.

When the road upgrade is complete, you may have to travel slightly further to access the new dedicated U-turn bays or traffic lights. However, your journey will be safer and more reliable.

Exiting a property



Entering a property



An active community

Pedestrians and cyclists will also benefit from these upgrade works, with improved access to cycling and walking paths, safer road crossings and landscaping along the road.

As part of the Craigieburn Road Upgrade, there will be over 10km of continuous bike and walking paths for you to enjoy on both the north and south sides of Craigieburn Road.

We're making it safer and easier for you to access the things you love about your local area, including public transport, local shops and community facilities.

Mapping our progress

See the design and latest progress of the Craigieburn Road Upgrade at our interactive map. Please visit roadprojects.vic.gov.au/craigieburn to access the map.

Residents and businesses affected by upcoming works will be contacted directly by our project team.

Stay informed

For more information on disruptions, please visit roadprojects.vic.gov.au to subscribe to email updates or SMS the word **CRAIGIE** to 0499 073 073 or by visiting roadprojects.vic.gov.au/signup

Visit ptv.vic.gov.au for changes to bus stops.

roadprojects.vic.gov.au



For languages other than English please call 9209 0147

1800 105 105 (call anytime)

contact@roadprojects.vic.gov.au



Please contact us if you would like this information in an accessible format. If you need assistance due to a hearing or speech impairment, visit relayservice.gov.au



Australian Government

