



PAKENHAM

OPEN SPACE CONSULTATION REPORT

MARCH 2022



levelcrossings.vic.gov.au

Authorised and published by the Victorian Government, 1 Treasury Place, Melbourne





Contents

Executive summary	2
Project overview	2
Introduction	4
Guiding principles	5
Consultation objectives	5
Open space consultation activities	7
Online open space engagement	7
Key ideas for open space	10
Parks, gardens and seating	10
Playgrounds	10
Sports and recreation	11
Safety	11
Multipurpose	11
Walking and cycling	12
Art and culture	12
Thank you and next steps	13

Open space examples from completed Level Crossing Removal projects

EXECUTIVE SUMMARY

Project overview

We're removing the dangerous and congested level crossings at McGregor Road, Main Street and Racecourse Road by building a rail bridge over the roads and building new stations at Pakenham and East Pakenham.

The Victorian Government has fast tracked these level crossings for removal as part of a \$15 billion investment to upgrade the Pakenham line, which will be boom gate free by 2025.

The crossings will be removed by building a rail bridge over the roads, creating more than six MCGs' worth of new community open space for locals to enjoy for generations to come.

The 2.5 kilometre rail bridge design with a new premium Pakenham Station will improve safety, reduce road congestion and allow more trains, more often.

The new Pakenham Station will provide modern facilities, more services and improved security.

The new station precinct will also create better train and bus connections for the local community and will include more bike facilities and improved walking and cycling paths.

We're also extending the metropolitan rail line by two kilometres and building a new East Pakenham Station to meet the needs of this fast-growing local community.

Construction is now underway and will ramp up throughout 2022. All three level crossings will be removed in 2024.

The two new stations and community open space will open in 2024.



All three of Pakenham's level crossings will be gone for good in 2024.



The two new stations and community space will open in 2024, 12 months ahead of schedule.

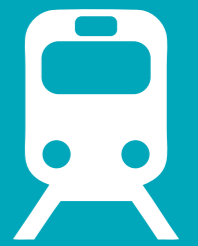
Why these level crossings need to go:



63,000 vehicles use these crossing each weekday



Boom gates down for more than 30 minutes of the morning peak



170 Metro and V/Line trains pass through the level crossing daily



Two serious crashes since 2005



Ten near-misses since 2012



90,000 passengers use the Cranbourne and Pakenham lines each day



View of new Pakenham Station and bus interchange looking west. Artist impression only. Subject to change.

The project will deliver:



Improved safety
and less road
congestion



A new premium
Pakenham Station
with better facilities
and more services



A new East
Pakenham Station
for the growing
local community



New walking
and cycling
connections



Six MCG's worth
of community
open space



New rail
bridge over
McGregor Road,
Main Street and
Racecourse Road



View of new Pakenham Station from Bourke Park. Artist impression only. Subject to change.



View of new Pakenham Station forecourt. Artist impression only. Subject to change.

Introduction

Pakenham locals shared their ideas and thoughts on how they'd like the new community open space to be developed in late 2021.

By engaging the community to help us develop this new open space, the project will deliver places that the Pakenham community can enjoy for generations to come.

The consultation with the community was hosted online with people contributing by commenting on a map of the project area, completing an online survey via the online engagement platform Engage Victoria or attending a virtual workshop.

Opportunities for the community to provide feedback were promoted in a community update, which was distributed to 31,500 homes and businesses in the local community.

Three email updates were sent to over 3000 subscribers, and the Level Crossing Removal Project's website and social media channels were used to direct people to the survey and workshop registration page.

This report summarises what the community, businesses and stakeholders told us during consultation. It includes the numeric results and more descriptive feedback received as part of the open space consultation.

This feedback will be considered as we develop the designs of the new open space areas along and under the rail bridge and around the station precincts.

Consultation objectives

- Raise awareness about the new open space that will be delivered as part of the project
- Use community feedback to help shape the design of Pakenham's new open space
- Conduct meaningful community engagement on the use of the new community open space
- Communicate considerations and constraints in developing the design of the open space
- Report back to the local community with key findings from the consultation.



Elevating the rail line over McGregor Road, Main Street and Racecourse Road will create six MCGs worth of new open space for the community to enjoy for generations to come.

To help shape the design of the new open space along and under the rail bridge, we sought community ideas and feedback as part of the Pakenham Level Crossing Removal Project.

Open space examples from completed Level Crossing Removal projects

YOUR FEEDBACK

Online open space engagement

There was community interest in the consultation, that was open for more than four weeks via the online Engage Victoria engagement platform.

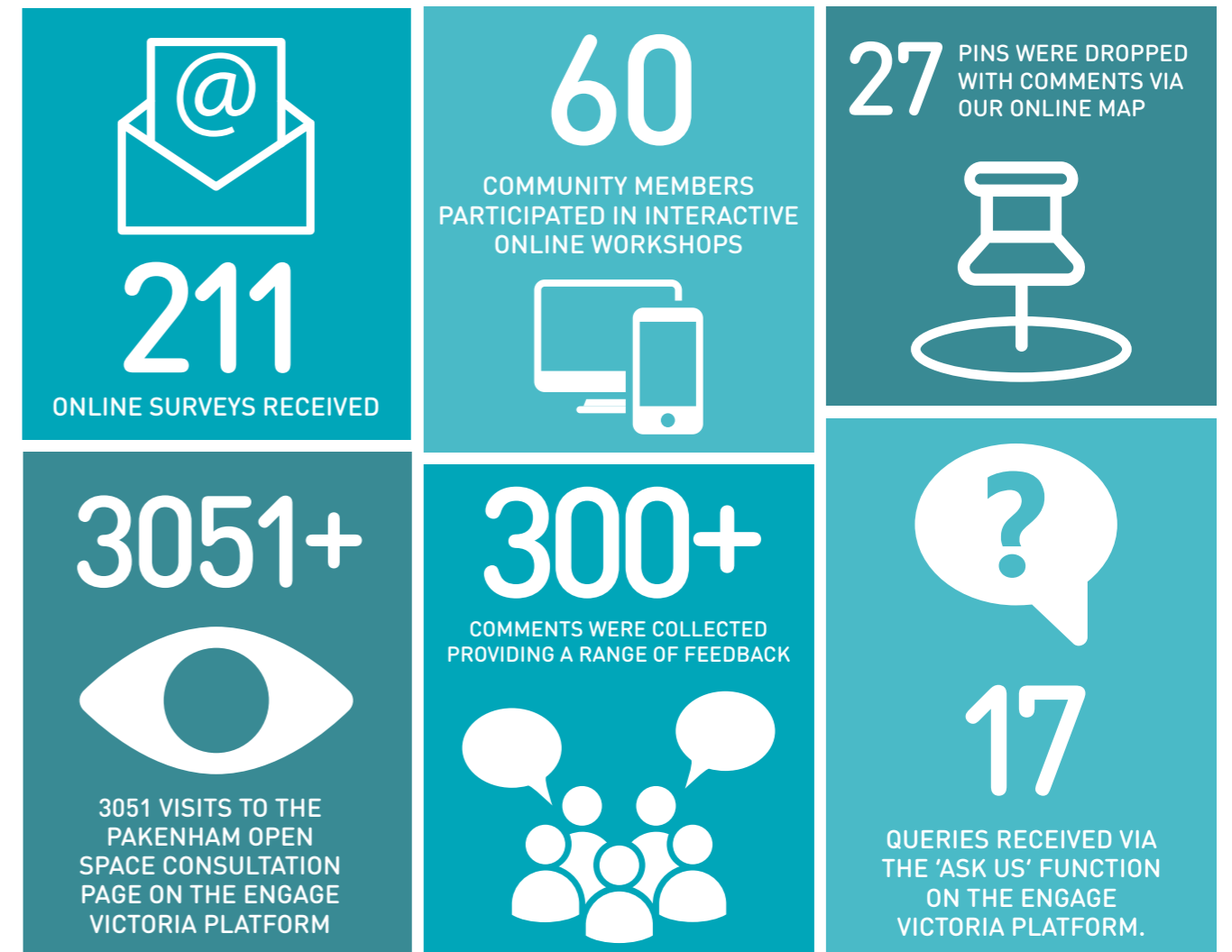
Online workshops

Two interactive online workshops were held on Wednesday 27 October and Thursday 28 October for community members to provide their ideas and suggestions on what they'd like to see in the new open space.

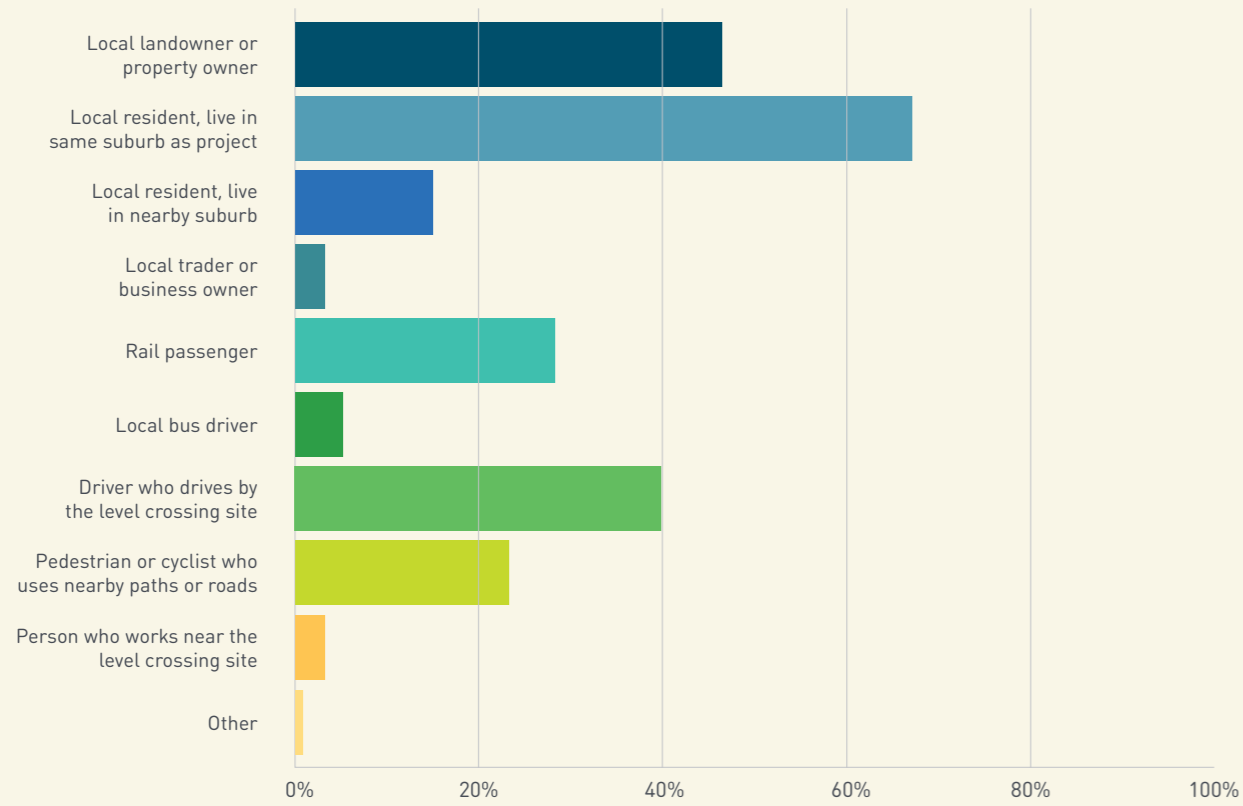
Most respondents were residents from Pakenham. About 60 per cent live within one kilometre of the rail corridor.

At the workshops, members of the project team presented photo examples of completed open space on other level crossing removal projects and answered questions about the project. To support the discussion component of the workshops, a map of the open space areas was shared with participants.

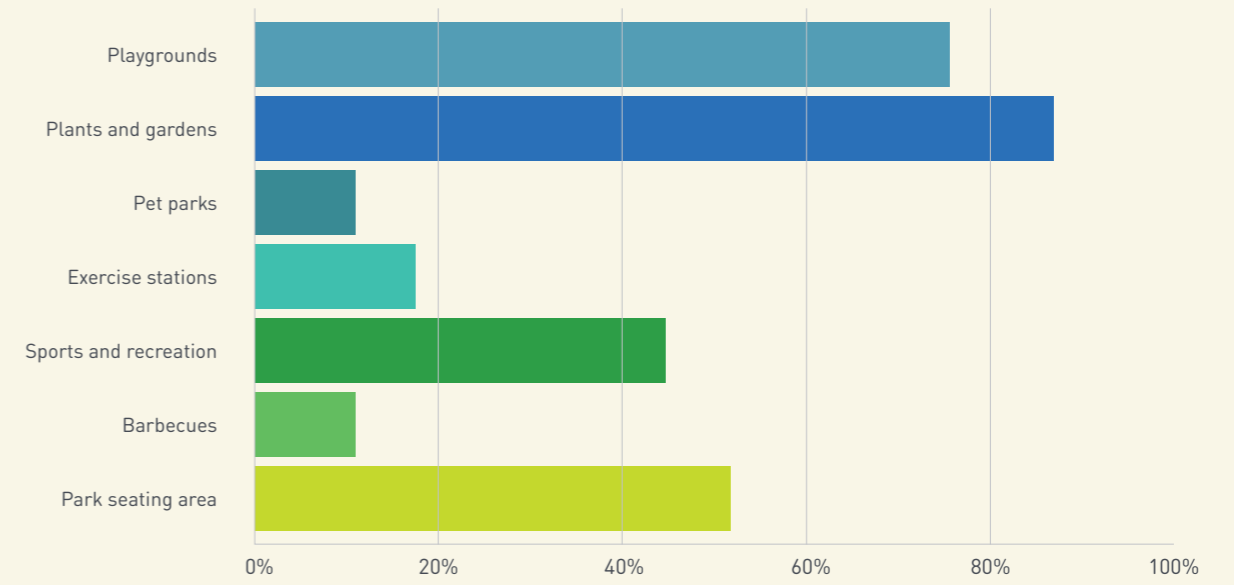
Workshop participants drew on inspiration from other level crossing removal projects and their own experiences in Pakenham to suggest ideas for the new open space. Their ideas and suggestions were captured through the online engagement tool, Mural.



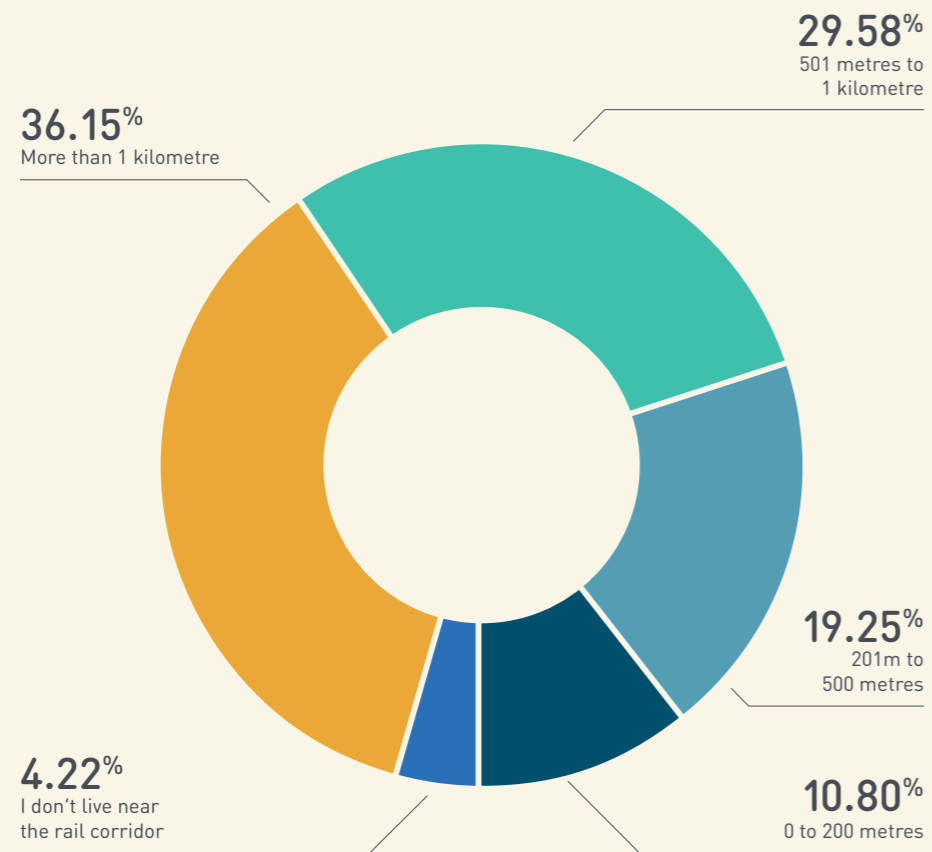
What's your interest in the Pakenham Level Crossing Removal Project?



What features do you most want to see in the open space below the rail bridge?



How far do you live from the rail corridor?



View of new Pakenham Station from Main Street. Artist impression only. Subject to change.

KEY IDEAS FOR OPEN SPACE

After analysing the Engage Victoria survey responses, online workshop comments and other written submissions regarding the use of new open space, seven key themes emerged.

- Parks, gardens and seating
- Playgrounds
- Sport and recreation
- Safety
- Multipurpose spaces
- Cycling and walking
- Art and heritage



Parks, gardens and seating

The most popular open space feature with survey respondents was plants and gardens.

There was a strong desire for the open space to be greener, enhancing visual amenity.

Many people wanted the open space to include parks, providing more outside options to enjoy with family and friends.

Gardens were also highly favourable for places where locals could sit near shaded areas.

Many participants suggested native planting that provides shade and attracts local wildlife.

'Plenty of seating for people to eat lunch as the Main Street shops are nearby.'
– Workshop participant

'Big trees and shaded areas to mitigate climate change and radiant energy from pathways and building structures.'
– Survey respondent

'Consider pollinator garden with flowering gums for native bees and banksias for the local yellowtail black cockatoos.'
– Survey respondent



Playgrounds

On average, survey respondents ranked playgrounds as the second most important open space feature.

You told us that the creation of play areas for children of all ages and abilities would provide opportunities for families to socialise. Some respondents asked for natural materials and shade to be incorporated into play areas.

In the workshops, many participants agreed that outside the new Pakenham Community Hospital would be the best location for a playground.

'Toddler friendly play spaces and playgrounds.'
– Survey respondent

'[outside the new hospital] is a great area for a playground as it is away from traffic, this is a safe area'
– Workshop participant



Sport and recreation

We heard that the creation of active spaces is important to community health and wellbeing.

Multipurpose sports courts that can be used for basketball, netball or futsal was a popular request among locals.

The most popular suggestion for a sport and recreational area was a basketball court. There were 22 participants who requested a basketball court feature in the open space.

'Keep Victorians Healthy - Exercise stations, basketball hoops, accessible drinking water.'
– Survey respondent

'Soccer, tennis, basketball. Sport sport and more sport.'
– Facebook comment

'An enclosed multipurpose sporting cage with soccer goals, basketball hoops, etc, like in Brooklyn, NY.'
– Survey respondent



Safety

The local community asked for a sense of security for residents, pedestrians, cyclists and train and bus passengers to walk at all times of the day.

Preventing graffiti and anti-social behaviour were also key priorities.

We heard some great ideas to increase safety such as more lighting, incorporating art into the design and the creation of a dedicated graffiti wall.

We heard about the importance of ongoing maintenance of the new open space. Many participants suggested that maintaining new facilities and keeping the area clean would help deter vandals and prevent the new spaces from becoming neglected or vandalised.

'Light at night time is important. Safety is a big concern. Adequate lighting near the station and along the alignment.'
– Workshop participant

'Safety and security should be given high consideration. Well-lit pathways at night and secure short-term parking for bikes.'
– Survey respondent



Multipurpose spaces

Throughout our online engagement there were 16 requests for a multipurpose events space that could be used by local community groups.

Some suggestions for the use of the space included local markets and the Bless Collective, a local charity that operates out of Bourke Park.

People also recognised the need for a new outdoor entertaining space in the area, with 14 respondents requesting an amphitheatre be included in the new open space.

'An amphitheatre should go near Main St near the pub. It would be great for live music or films.'
– Workshop participant

'Space that can adapt for the future. Open air concerts, food trucks, community market day, general use area'
– Workshop participant



Cycling and walking

More than 40% of survey respondents cycle through Pakenham at least once a month.

Many locals expressed a desire to see more cycling and walking paths in the area.

Respondents cited safety as a priority, wanting to see wider paths and adequate lighting at night.

Other suggestions included connecting new walking and cycling paths to existing paths and creating BMX jumps along the cycling paths.

'It would be nice to have designated walking and cycling lanes and have them connect to the other cycling and walking tracks around the area.'
– Survey respondent

'Make the paths wide. Make the paths safe with lights. Being the end of the line, people get home later so will be walking home in dark. Make sure plenty of lights along the way.'
– Survey respondent



Art and heritage

We heard that integrating art into the open space areas was of high interest to the community.

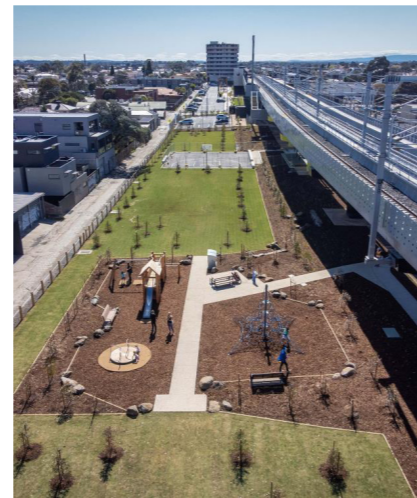
Recommended options included using the rail structure as a canvas for artwork, installing sculptures and incorporating an artistic approach to active areas. This could be achieved through murals and historical signs.

Some suggested a celebration of Pakenham's rich culture, with European and Aboriginal elements to be used in the open space design.

Other suggestions included reusing elements of the existing station in the open space and incorporating the story of the local Yakkerboo into the public artwork.

'Include artwork that is visually appealing that links to the community and the Yakkerboo.'
– Workshop participant

'Install information boards about the local history, fauna and flora.'
– Workshop participant



Open space examples from completed Level Crossing Removal projects

THANK YOU AND NEXT STEPS

Thank you to everyone who took the time to share ideas and tell us their thoughts on how they'd like Pakenham's newest open space to be developed.

Your feedback will play an integral role in shaping the open space, making sure the area meets the needs of the local community.

We'll use the community feedback you gave us to progress designs on the areas under and along the rail bridge.

Working with the community, we are confident the project will deliver new open space that is safe, accessible and reflects the unique character of the Pakenham area.

We look forward to coming back out to show the community the open space designs.

Keeping in touch

To stay up to date subscribe to our email updates, at levelcrossings.vic.gov.au/subscribe and select **Pakenham**.

If you have any questions or would like more information, call **1800 105 105** or email contact@levelcrossings.vic.gov.au 24 hours a day, seven days a week.

Follow us on social media or send us a private message on our Facebook page.



STAY UP TO DATE ON OUR WORKS

Scan the QR code or text **PAKENHAM** to **0428 581 917** to sign up for SMS updates about the Pakenham Level Crossing Removal Project

Project timeline

- ✓ **2020**
 - Site investigations
 - Technical and engineering assessments
 - Community engagement
- ✓ **Early 2021**
 - Community engagement
 - Further engineering investigations
- ✓ **Mid 2021**
 - Station designs announced
- ✓ **Late 2021**
 - Open space community consultation
 - Early works
- **2022**
 - Construction
- **2023**
 - Construction
- **2024**
 - Boom gates gone for good
 - Pakenham and East Pakenham stations open
 - Community space open for locals to enjoy

Timeline above subject to change



CONTACT US

contact@levelcrossings.vic.gov.au

1800 105 105

Level Crossing Removal Authority
GPO Box 2392, Melbourne VIC 3001

Follow us on social media
[@levelcrossings](#)



Translation service – For languages other than English, please call 9209 0147.

Please contact us if you would like this information in an accessible format.

If you need assistance because of a hearing or speech impairment, please visit relayservice.gov.au