



GLENROY ROAD, GLENROY – APRIL 2022

*From 26 April, trains will stop running on the existing tracks.  
From 9pm 6 May, the new station will be open.*

# CONSTRUCTION UPDATE

The Victorian Government is removing the level crossing on Glenroy Road and building a new Glenroy Station. By Saturday 14 May, the level crossing will be gone for good with trains running to the new station.

The countdown is on to a level crossing free Glenroy Road. From **Tuesday 26 April to Saturday 14 May**, we will be working around the clock to remove the boom gates on Glenroy Road and get the new station ready for passengers.

From 9pm Friday 6 May, passengers will be able to catch the train from the new Glenroy Station, with access from Hartington Street only until mid-September.

Glenroy Road will reopen on **Saturday 14 May**. While the road is closed, pedestrian access will be maintained across the level crossing at all times.

During our upcoming works the following changes will be in place:

- Dowd Place is closed until mid-September as we build the new car park, remove the old rail infrastructure and complete the western station entrance
- Glenroy Road will be closed from 26 April until 14 May as we remove the old boom gates and tracks
- Buses are replacing trains on the Craigieburn Line from Tuesday 26 April to Friday 6 May
- Station Road is closed from 26 April to 13 May between Glenroy Road and Meaker Avenue. Local access will be maintained for businesses and residential properties
- Four car spaces will be temporarily removed on sections of Post Office Place
- Electric Street, Broadmeadows will be closed to all traffic from 26 April to 6 May. Local access will be maintained for businesses and residential properties
- Intermittent northbound lane closure on Hartington Street. Business access will be maintained at all times
- A small section of Hartington Street will be fully closed near the corner of Glenroy Road from 26 April to 6 May.

## New Hartington Street roundabout

The new roundabout at the intersection of Hartington Street and Nelson Street opened to vehicles on Friday 1 April. This will make the intersection safer for buses and cars moving through the station precinct.

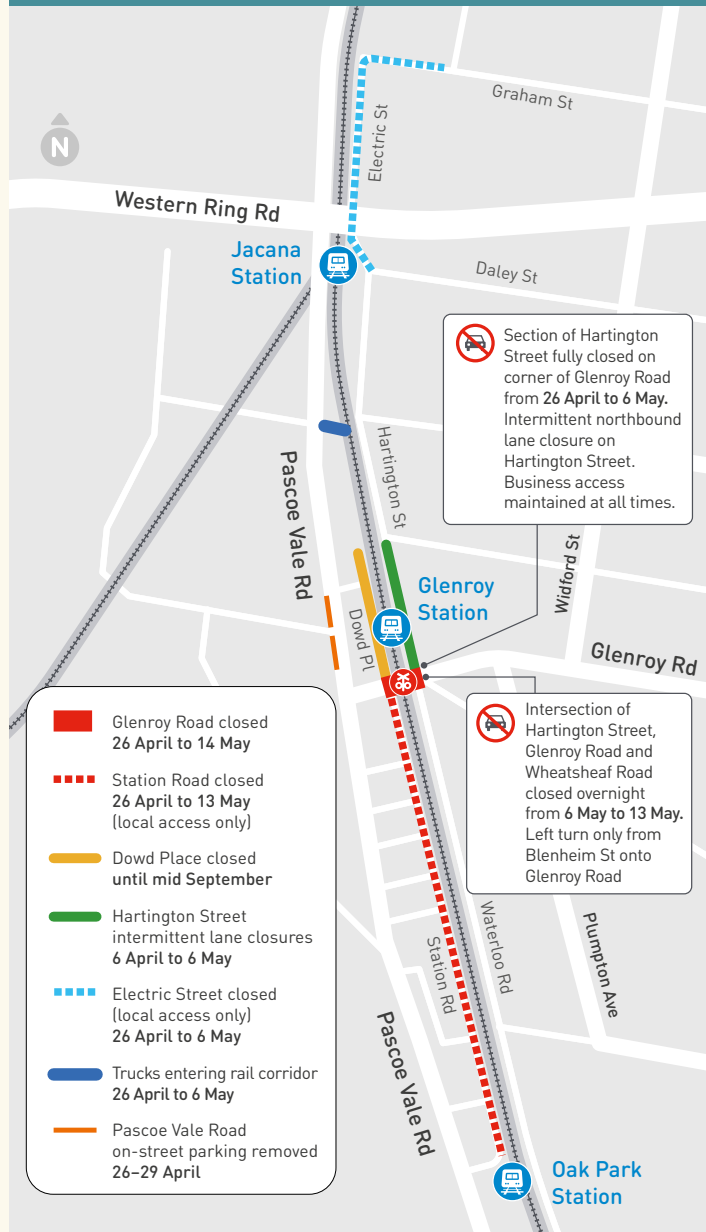


## Key construction dates

- ✓ **1 April**
  - Hartington Street roundabout open
- ✓ **3 April**
  - Dowd Place closes
- **26 April**
  - Glenroy Road closes
  - 24 hour works to remove the level crossing
- **6 May**
  - New Glenroy Station open at 9pm. Access from Hartington Street only
- **14 May**
  - Glenroy Road open. Boom gates gone for good
- **Mid September**
  - Glenroy Station completely open – access from Hartington Street and Post Office Place
  - Dowd Place car park open

*\* Please note that the timeline above is subject to change.*

## What to expect in the Glenroy area



## Changes to how you travel

Traffic management will be in place during these works. Please follow any signage and instructions from traffic management when travelling around the area.

Every effort will be made to complete these works on time, however dates are subject to change.

## Glenroy Road closure detours

While Glenroy Road is closed at the level crossing from **26 April to 14 May**, vehicles can detour via Camp Road or Gaffney Street.

You can view the detours by scanning the QR code below.



We encourage drivers to follow the outlined detours to avoid congestion on local streets. Please avoid residential roads, including Devon Road and Grevillia Road.



**KEEP UP TO DATE ON LXP WORKS**

Scan the QR code or text **GLENROY** to **0428 581 917** to sign up for SMS updates from the Glenroy Level Crossing Removal Project



contact@levelcrossings.vic.gov.au  
1800 105 105  
levelcrossings.vic.gov.au

@levelcrossings



**Translation service**  
For languages other than English, please call 9209 0147.

Please contact us if you would like this information in an accessible format.

If you need assistance because of a hearing or speech impairment, please visit [relayservice.gov.au](http://relayservice.gov.au)



Authorised and published by the Victorian Government, 1 Treasury Place, Melbourne