

DOMAIN PRECINCT

Community Reference Group

Presentation by CYP

19 October 2022

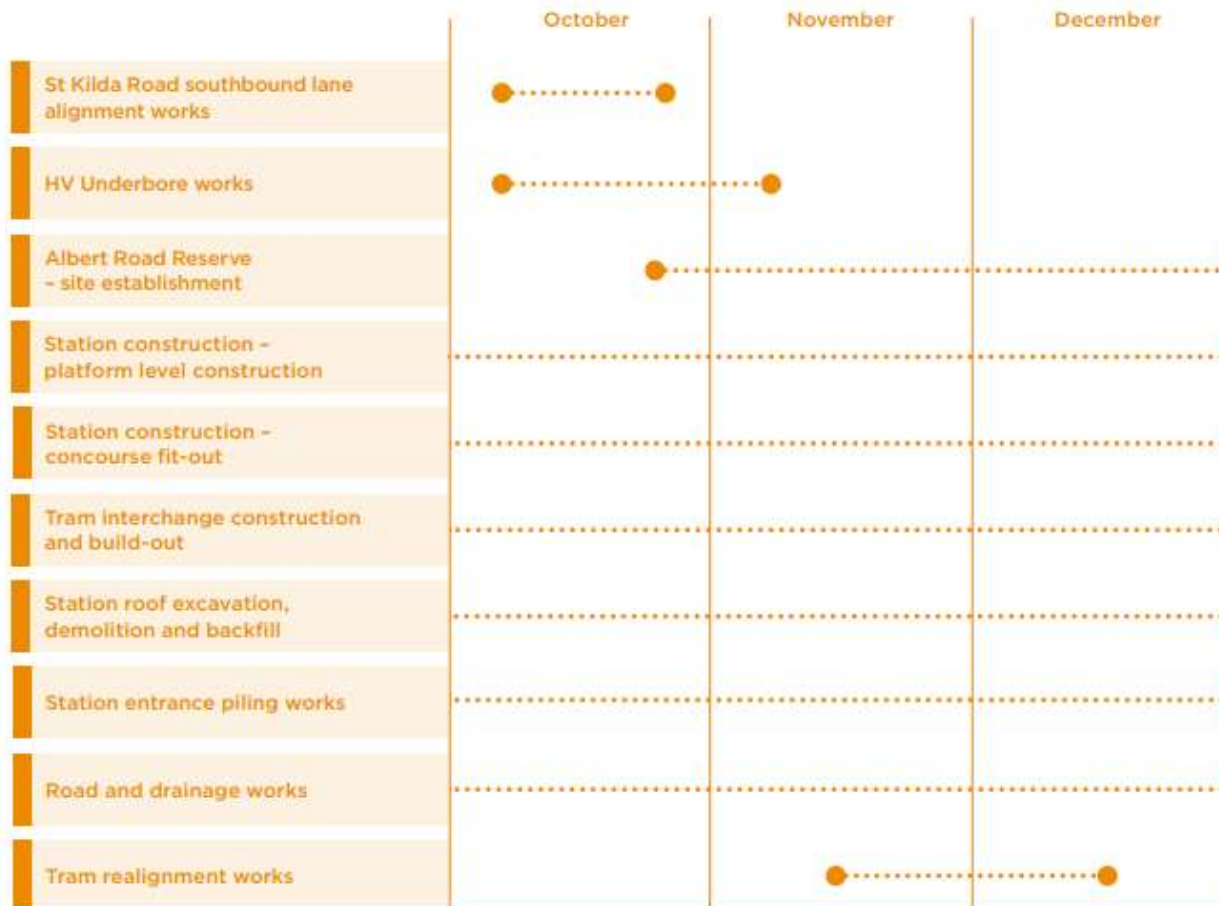




WORKS UPDATE: LOOKAHEAD

WORKS UPDATE

2022 LOOK AHEAD



Program is indicative and subject to change

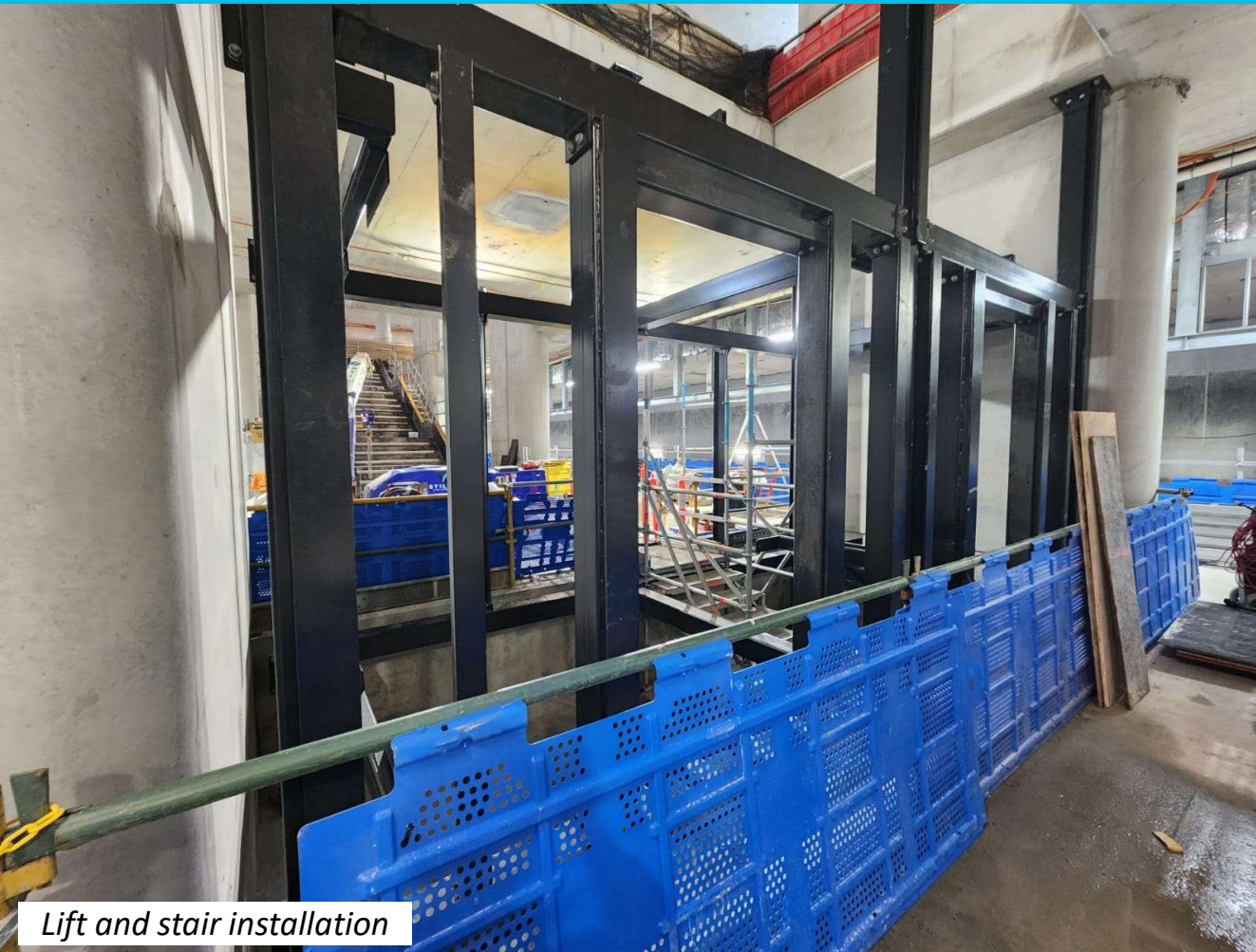


WORKS UPDATE: STATION CONSTRUCTION



WORKS UPDATE

PLATFORM LEVEL

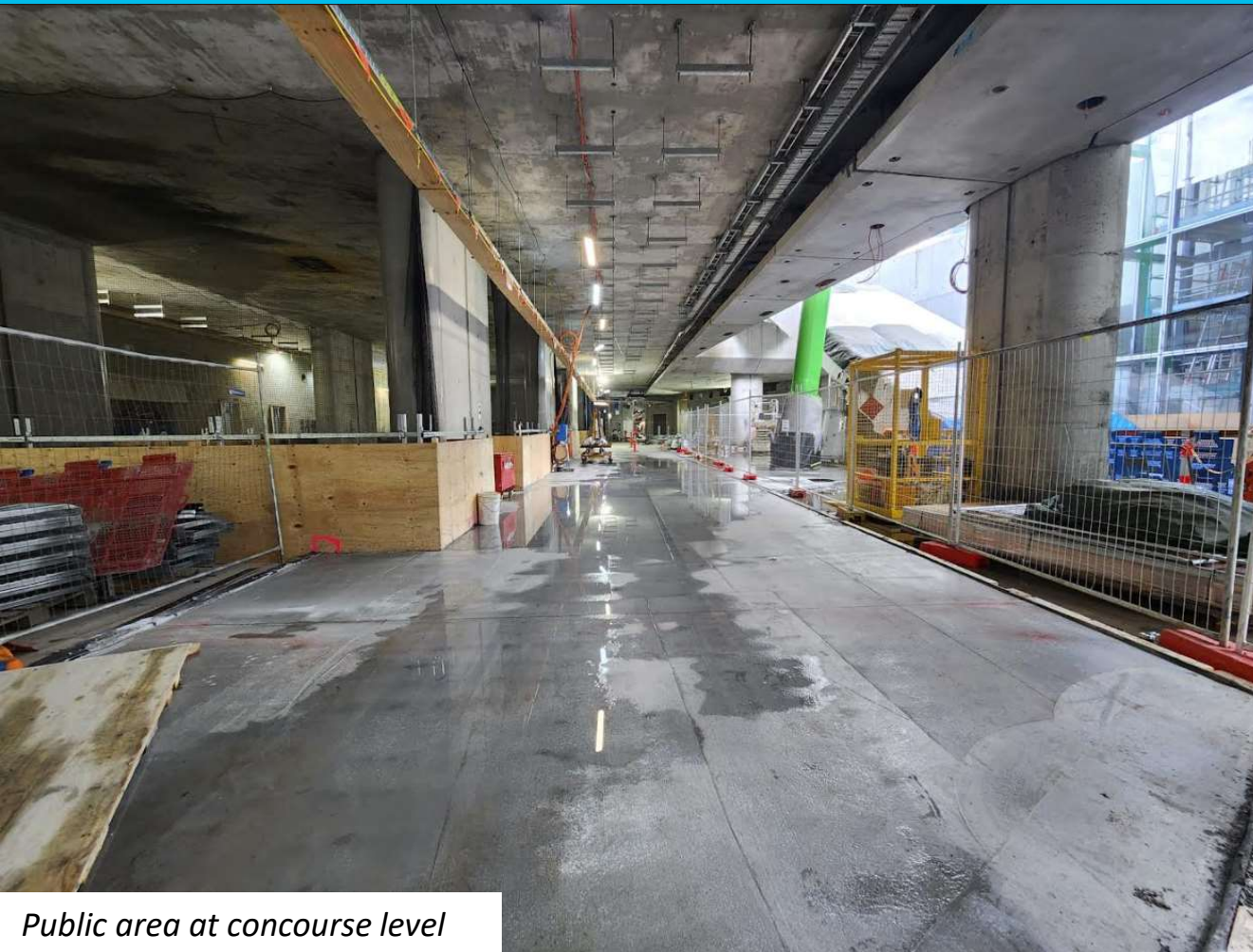


Lift and stair installation

- Track slab on both the eastern and western sides are nearly complete
- Escalators that connect the platform to the concourse level arrive this month
- Lift installation is continuing on platform level
- Works continue underneath the platform to install services
- Preparation for the install of Platform Screen Doors is underway

WORKS UPDATE

CONCOURSE LEVEL



- Blockwork is complete in the northern concourse level
- Services install works continue along with ongoing ventilation equipment installation
- Room fit-out is continuing in and across the concourse level

Public area at concourse level

WORKS UPDATE

ALBERT RESERVE SITE ESTABLISHMENT



Albert Reserve Setup 2018



- Site sheds in Albert Road south will now be installed in early November
- Parking and tree removal will commence after Melbourne Cup
- Protection zone will be put in place around the Windsor Oak
- Albert Reserve Pocket Park will be removed at the same time

WORKS UPDATE

SHRINE OF REMEMBRANCE ENTRANCE



- Breakback of piles is underway at Stage two of the Shrine entrance construction
- Initial excavation is nearing completion which allows the first piece of the structure to be done
- Further excavation will follow which will include some trucks removing spoil via Domain Road and Park Street

WORKS UPDATE

SURFACE WORKS STATUS



Strata Vault install



- Works ongoing to install services underneath the tram platform
- Balustrade and glazing install has commenced around the oculus
- Kiosk works continue with shop front windows going in now and soon external cladding will be installed
- Strata vault installation complete for future tree planting
- Ventilation shaft precast concrete panels are now installed at the southern end of site and are being tied into the roof slab

WORKS UPDATE

SURFACE WORKS STATUS (CONTINUED)



Tram track installation



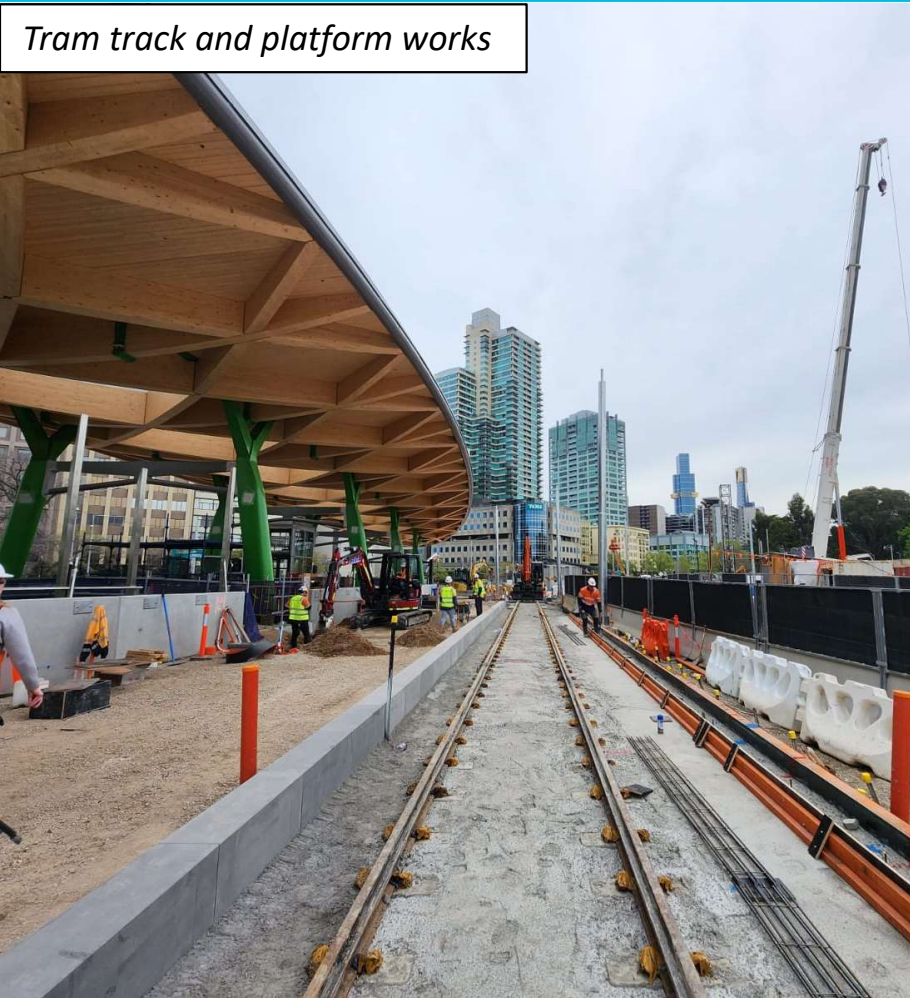
- Track laying is underway on the Eastern side of the tram platform
- Southbound lane of St Kilda Road is now switched onto its new alignment
- Site has now expanded to the west to enable construction of track on the west side of the tram stop
- Demolition of old pavements is being undertaken now
- CitiPower works on Park Street are expected to be complete on 27 November.

WORKS LOOK-AHEAD

PRE-OCCUPATION CRITICAL WORKS



Tram track and platform works



- The St Kilda Road tram network shutdown and 24/7 works are confirmed for the 27 November until 17 December.
- It is critical that the site is ready to commence these works
- Due to the recent rain and the forecast of more rain on the way, additional activities will extend till 10pm , Monday to Friday and until 3pm on Saturdays.
- In addition from 7 November until 19 November a number of key activities will be required to continue overnight, Monday to Friday.
- These works are critical to ensure the site is ready for the start of the 24/7 works. They include:

10pm Works (Now – 27 Nov)

- Kiosk and canopy works
- Tram platform construction
- Bluestone paving on the tram platform
- Track laying inside site
- Road and drainage works

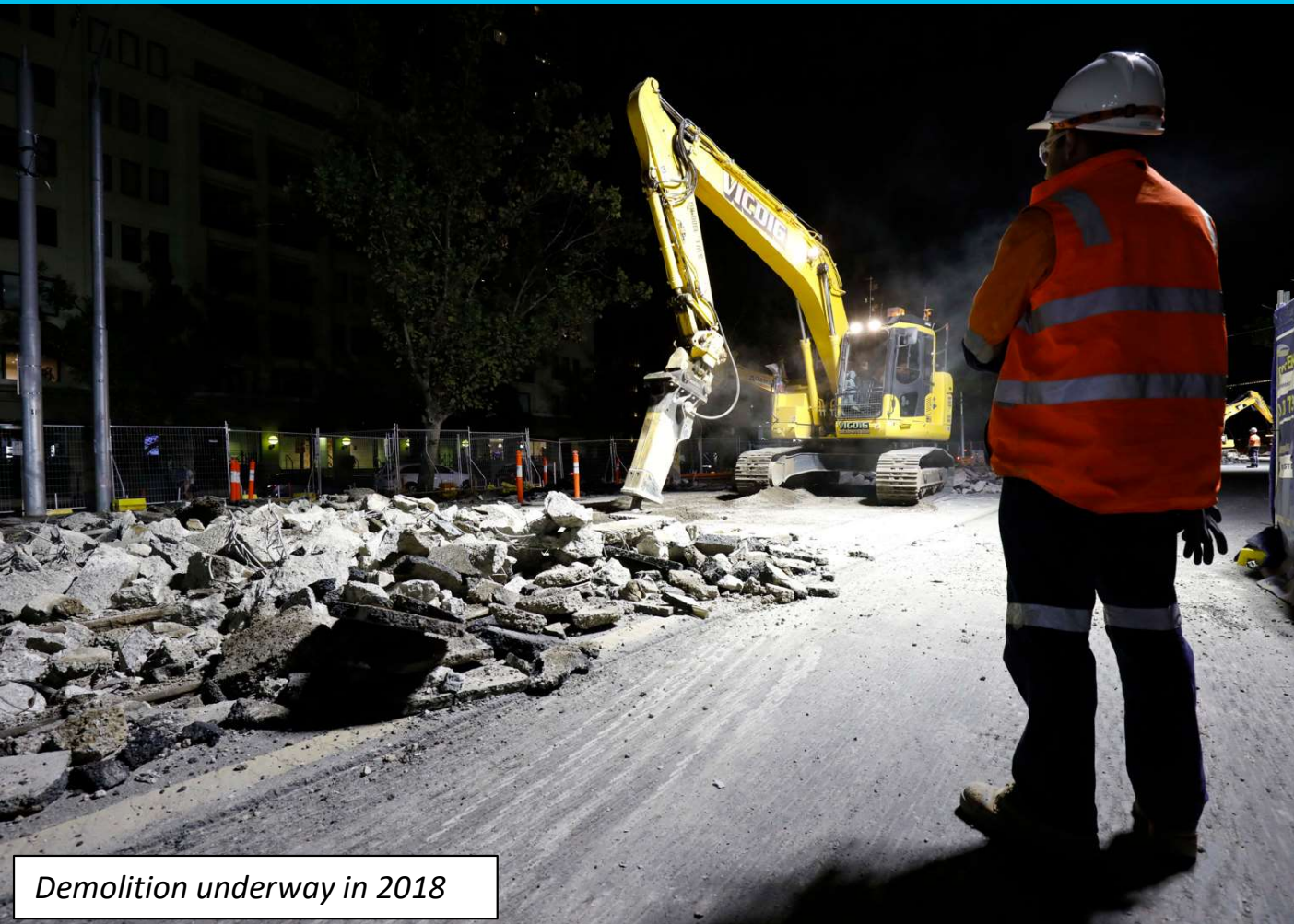
Overnight Works (7-19 Nov)

- Canopy completion works
- Kiosk and vent shaft completion works
- Road and tram works
- Tram platform works

OCCUPATION WORKS OVERVIEW

WORKS LOOK-AHEAD

24/7 WORKS



Demolition underway in 2018

The program of works for the 24/7 works is close to being finalised. There are three key activity groups during this time:

Tram Decommissioning

- Decommissioning the rail line power and dropping wires

Demolition

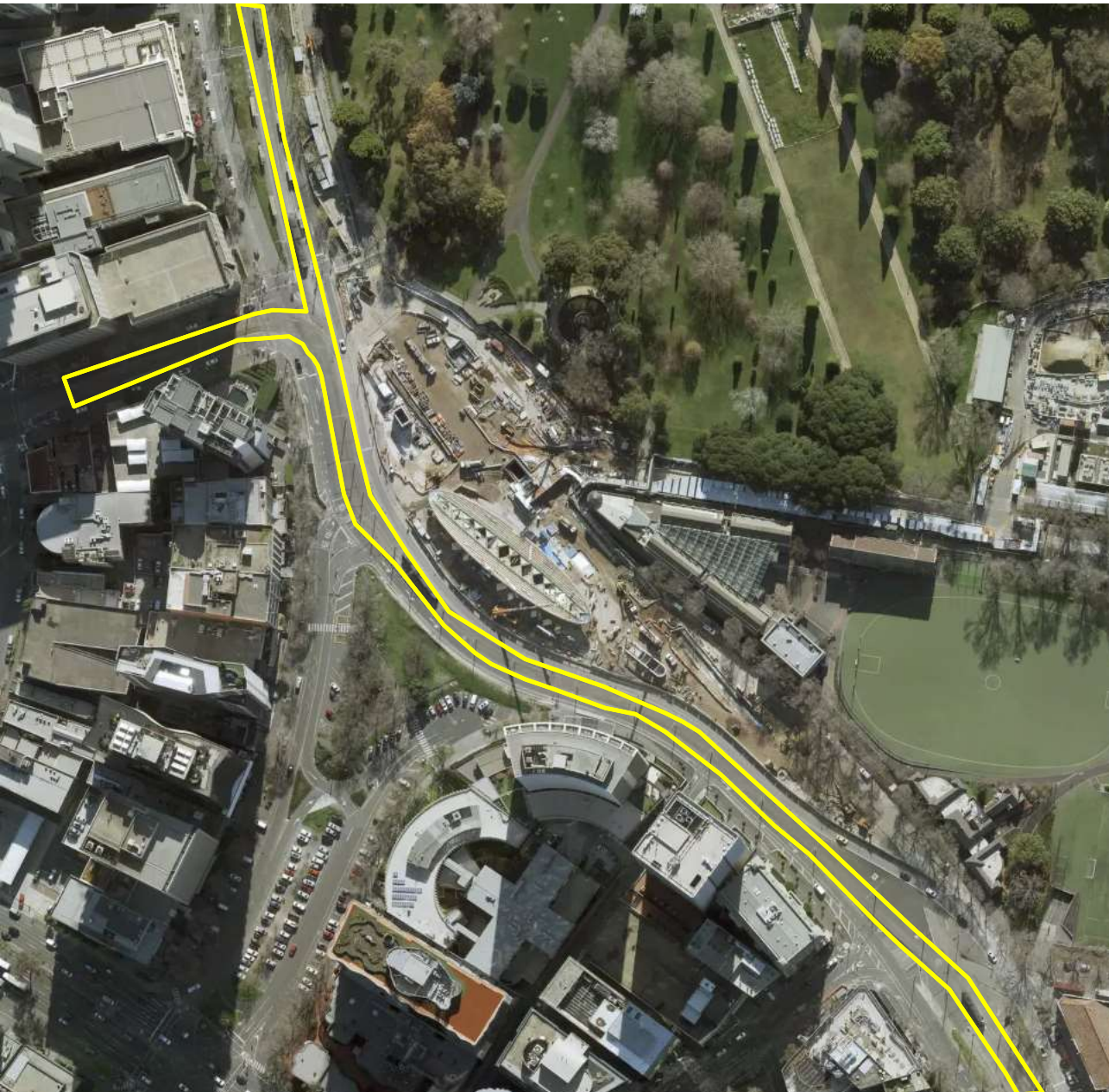
- Breaking out existing tram tracks and roadway

Civil Works:

- Asphaltting, profiling, concreting, kerb installation, backfill, pipe laying, earthworks/utilities, rail welding, overhead pole installation, barrier installation

Tram Commissioning

- Hanging new tram wires, running underground connections, energising and running test trams



WORKS AREA: SEQUENCING



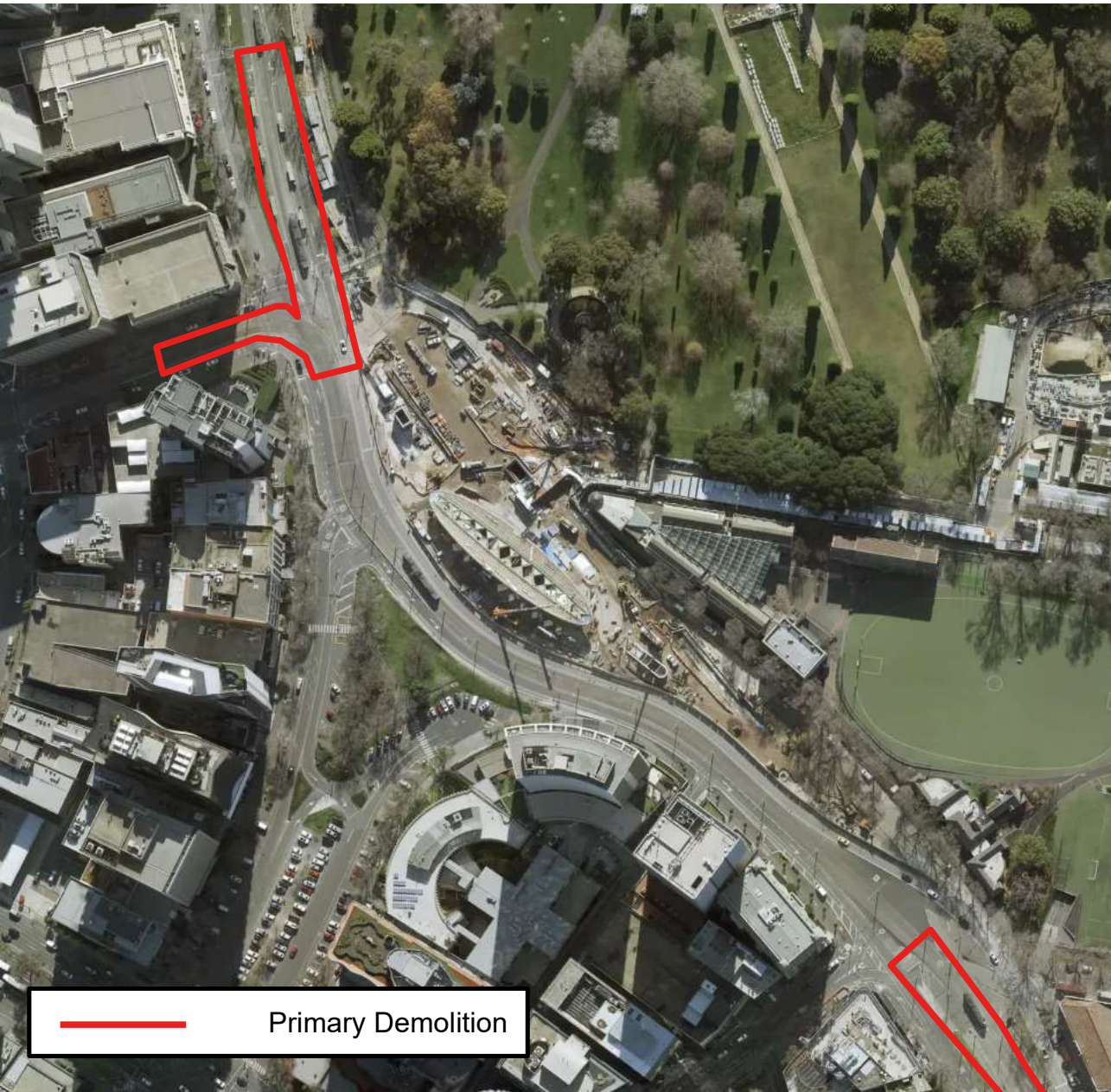
Tram Decommissioning

Yarra Trams decommission the rail line power and remove overhead wires through the site

Starts: 1am Sunday 27 November and continues all day

Involves: Workers on elevated work trucks using hand tools

Time frames indicative and subject to change



WORKS AREA: SEQUENCING



Demolition commences in primary areas

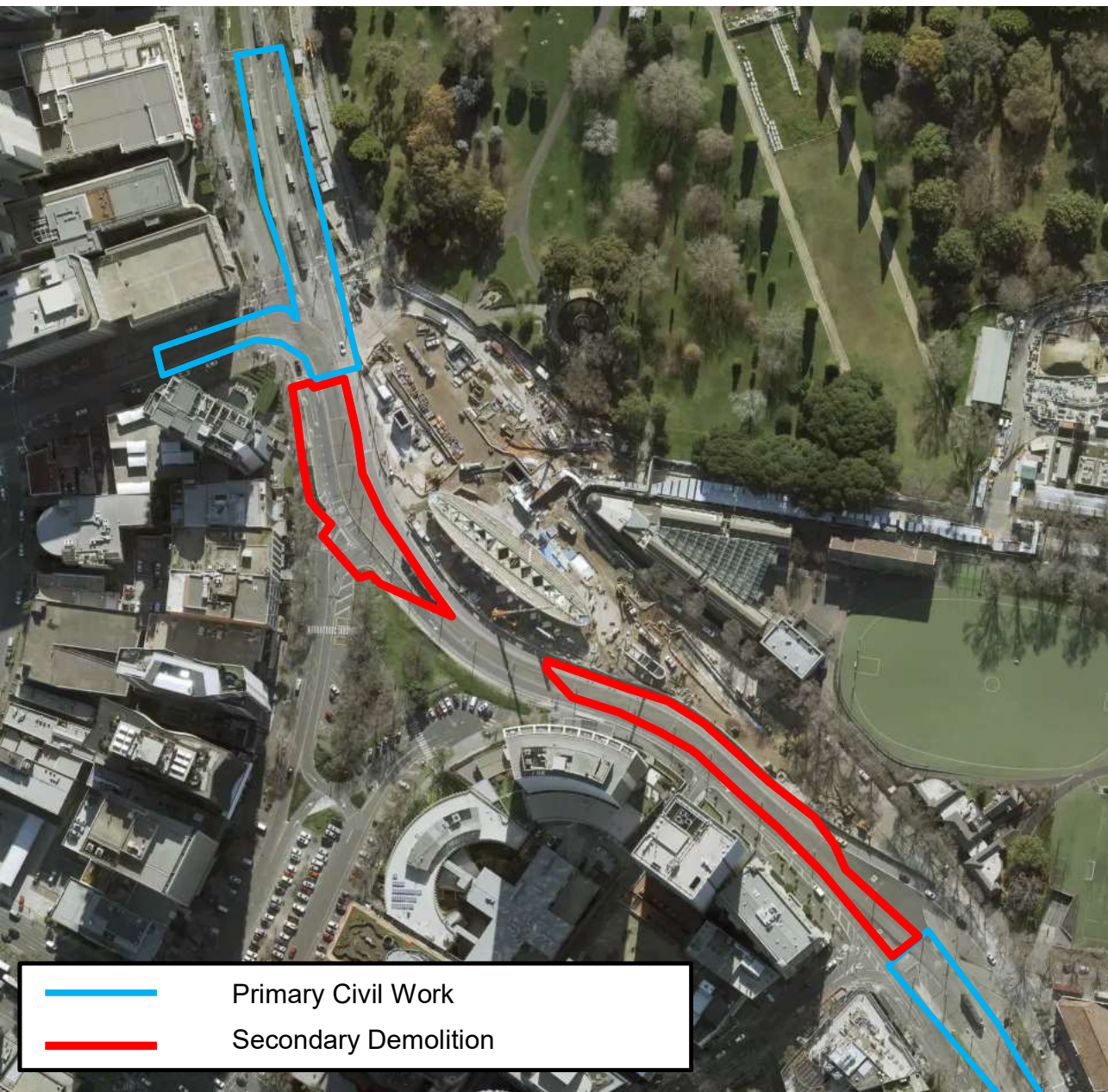
Once Yarra Trams has granted access, demolition will commence in the areas that require both road and tram construction

Starts: Sunday 27 November

Duration: 2-3 days

Involves: Excavators with hammers breaking out asphalt, concrete and track form. Excavators loading trucks and transporting material from site

Time frames indicative and subject to change



WORKS AREA: SEQUENCING



Civil work commences in primary areas, while demolition moves to secondary areas

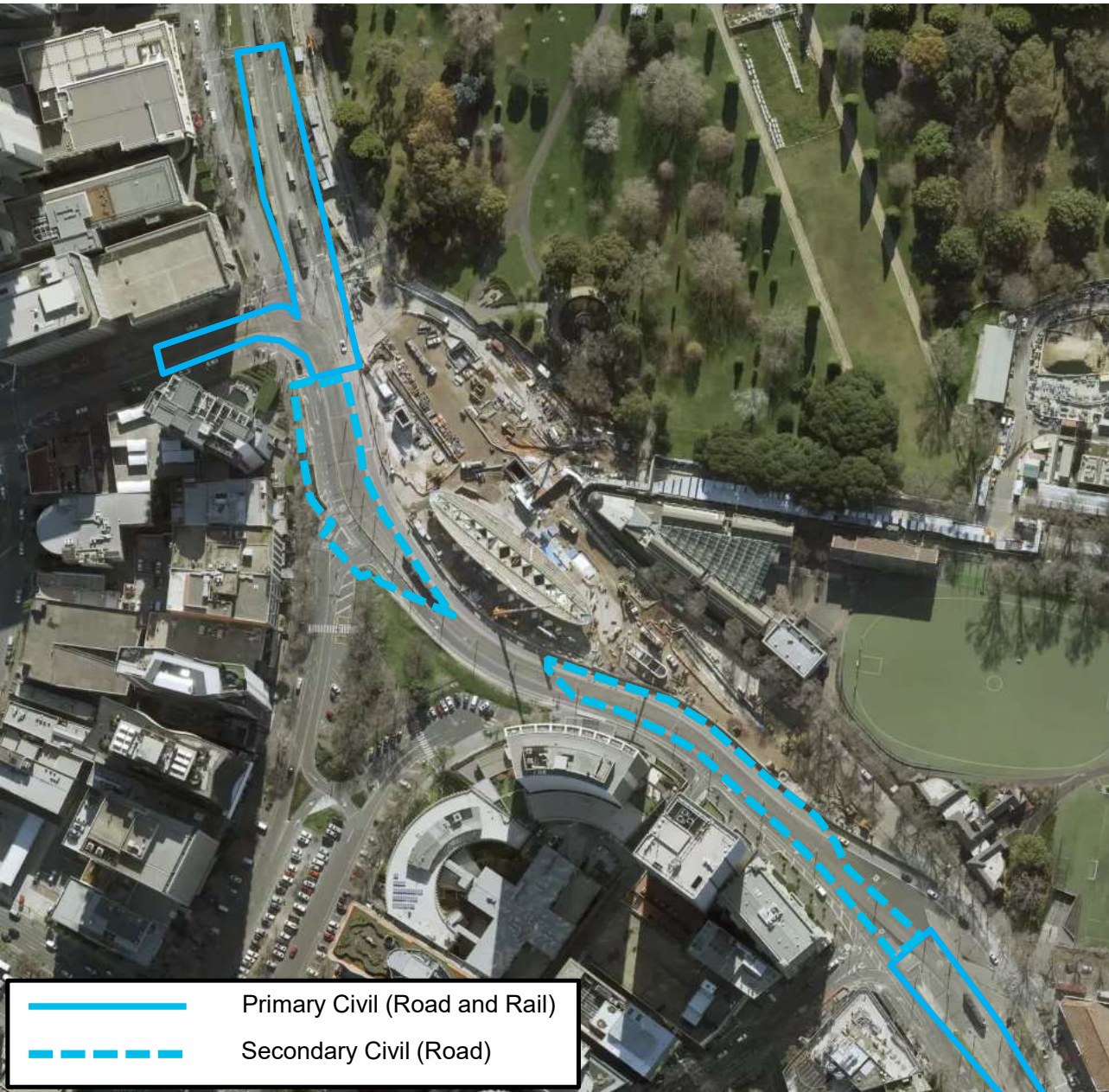
As soon as demolition is complete in the primary areas, the excavators will shift to the secondary areas. Track and road building will commence in the secondary areas

Duration: 2-3 Days (Demolition)

Duration: : 8-9 Days (Civil Work)

Civil Works involve: Excavation and installation of drainage, track laying, welding, backfill, compacting, asphaltting, line marking, tram pole installation

Time frames indicative and subject to change



WORKS AREA: SEQUENCING



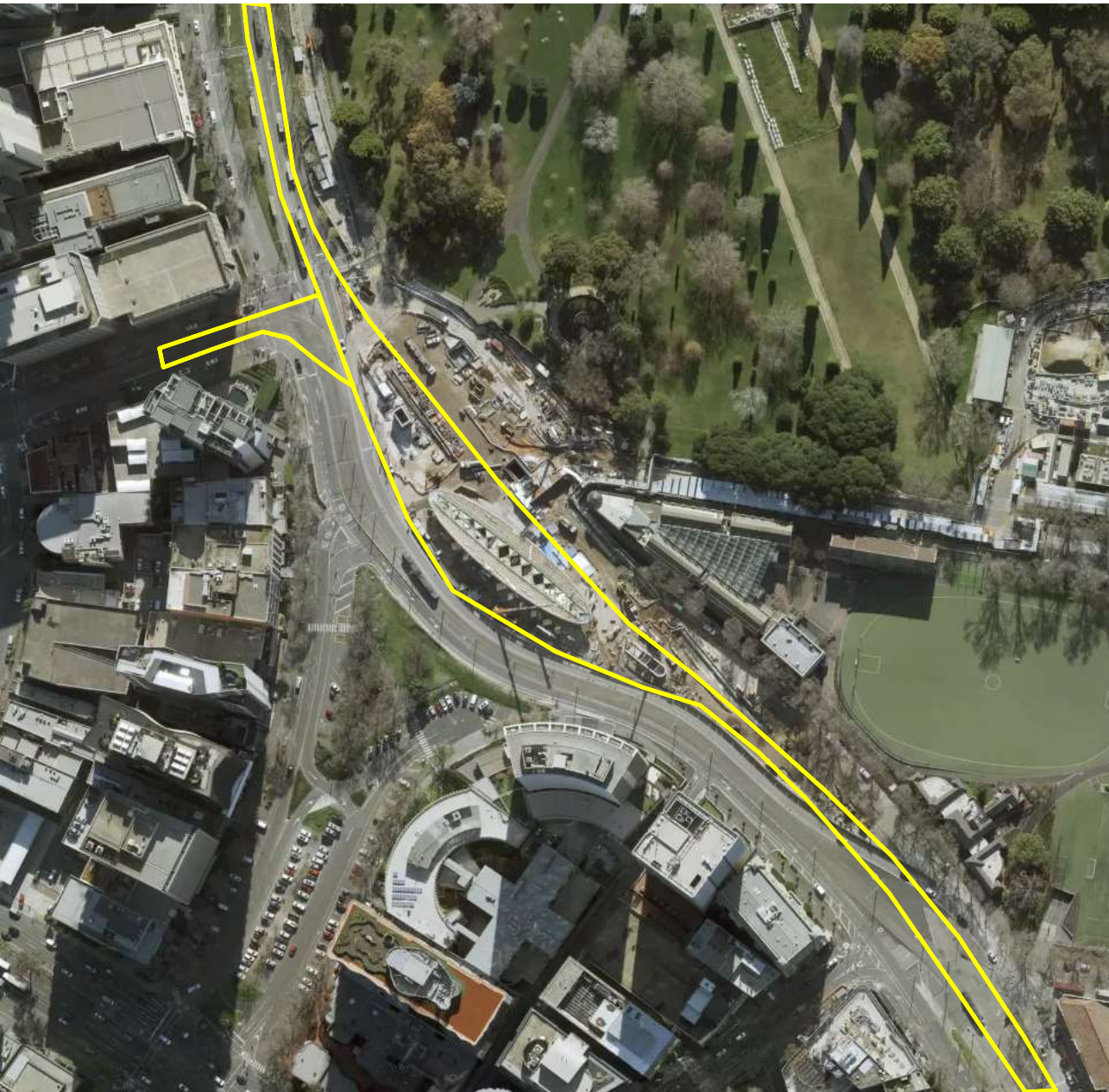
1. Civil works continue in primary area and commences in secondary areas (road building only)

Secondary area involves the construction of the new northbound road alignment, while works continue in the primary on both road and rail

Duration: 8-9 Days (Secondary)

Civil road works involve: Excavation and installation of drainage, backfill, compacting, asphaltting, line marking

Time frames indicative and subject to change



WORKS AREA: SEQUENCING



Tram commissioning

Duration (12 Days)

Yarra Tram hang overhead tram wires and run test trams

Starts: At the completion of tram track installation and overhead pole installation

Involves: Workers on elevated work trucks using hand tools

Time frames indicative and subject to change

ENVIRONMENT

NOISE MONITORING

Asphalting, Line Marking and Barrier Installation - October



- Overnight road works were undertaken as part of the first southbound lane switch in July
- These works provide a good indication of expected noise levels during road building and road commissioning works during November and December

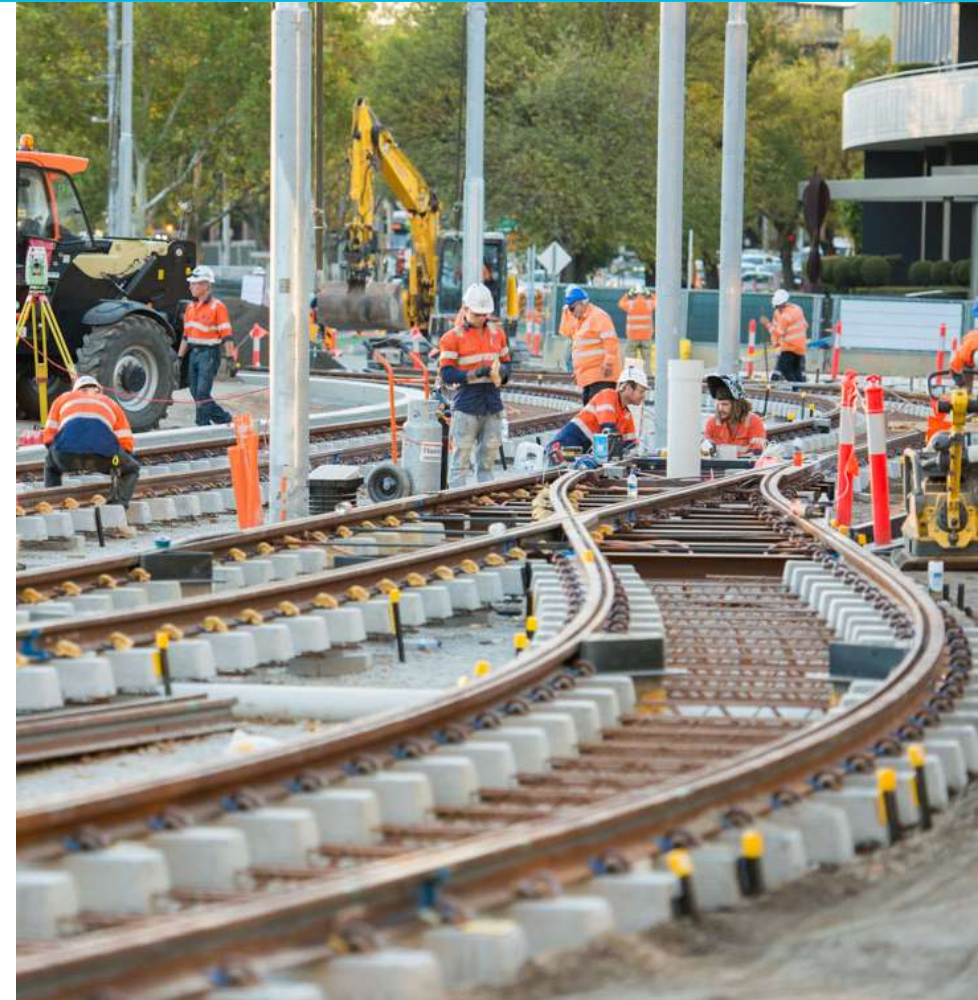
Road Works – Southbound lane 1hr LAeq (dB) (10pm-7am)		
<u>Receiver</u>	Wednesday 27 July (Road building)	Thursday 28 July (Line-marking)
Hallmark	50.4dB – 54.9dB	48.9dB – 54.3dB
Domain Hill	50.8dB – 56.3dB	47.5dB – 55.4dB
Domain	61.4dB – 70.1YdB	57dB - 69dB
Botanica	63.7dB – 68.7dB	58dB – 64.1dB

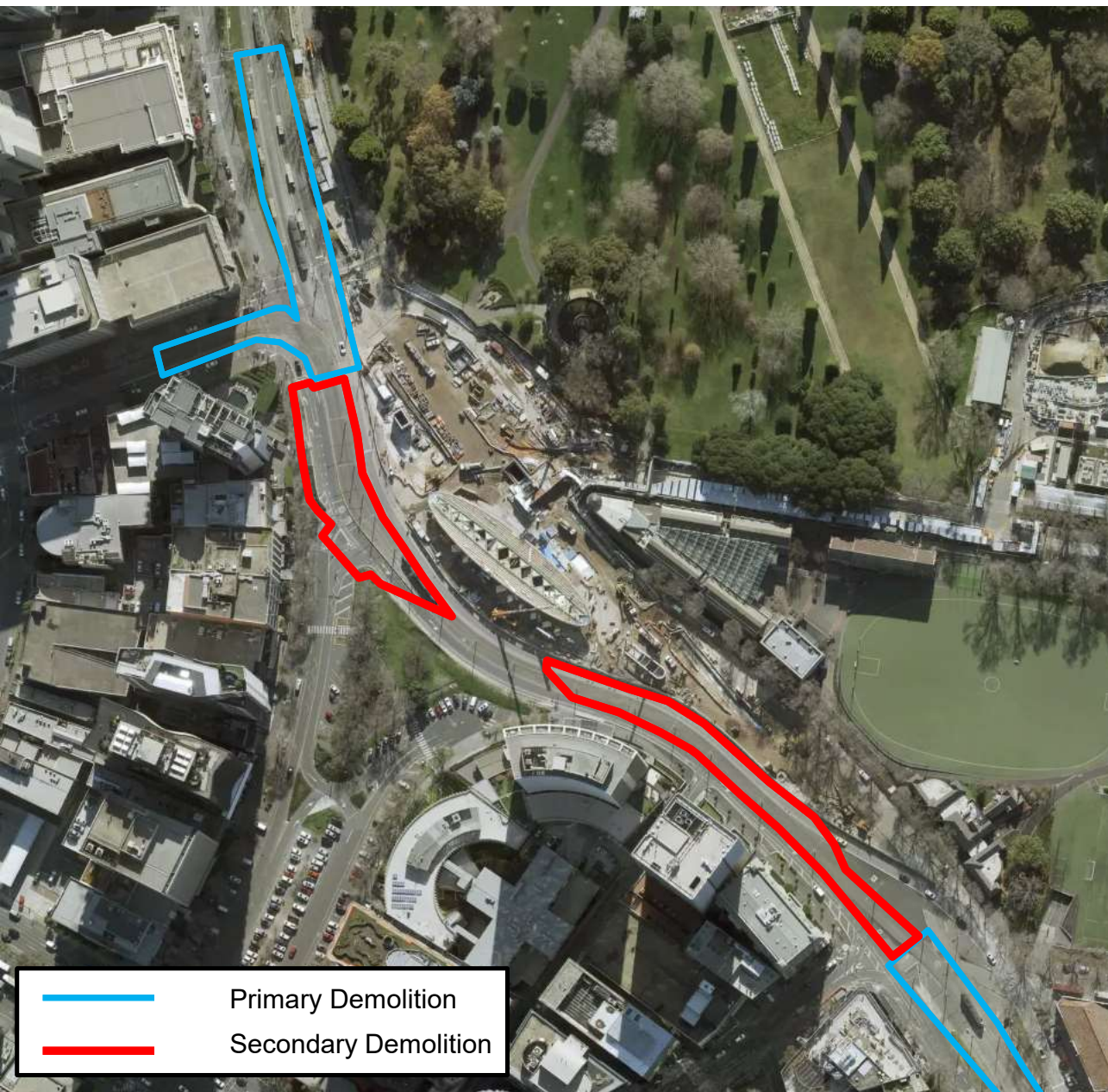
ENVIRONMENT

Modelling approach



- Modelling has been undertaken for the upcoming 24/7 works
- The modelling maps out point and line sources and applies a conservative approach
- Concentrates on works areas at a point in time
- Provides the team with an assessment against the Environmental Performance Requirements for unavoidable works
- The modelling considers works from 10pm to 7am and provides an assessment of the works against the Resident Impact Mitigation Guidelines (RIMG)





NOISE MODELLING

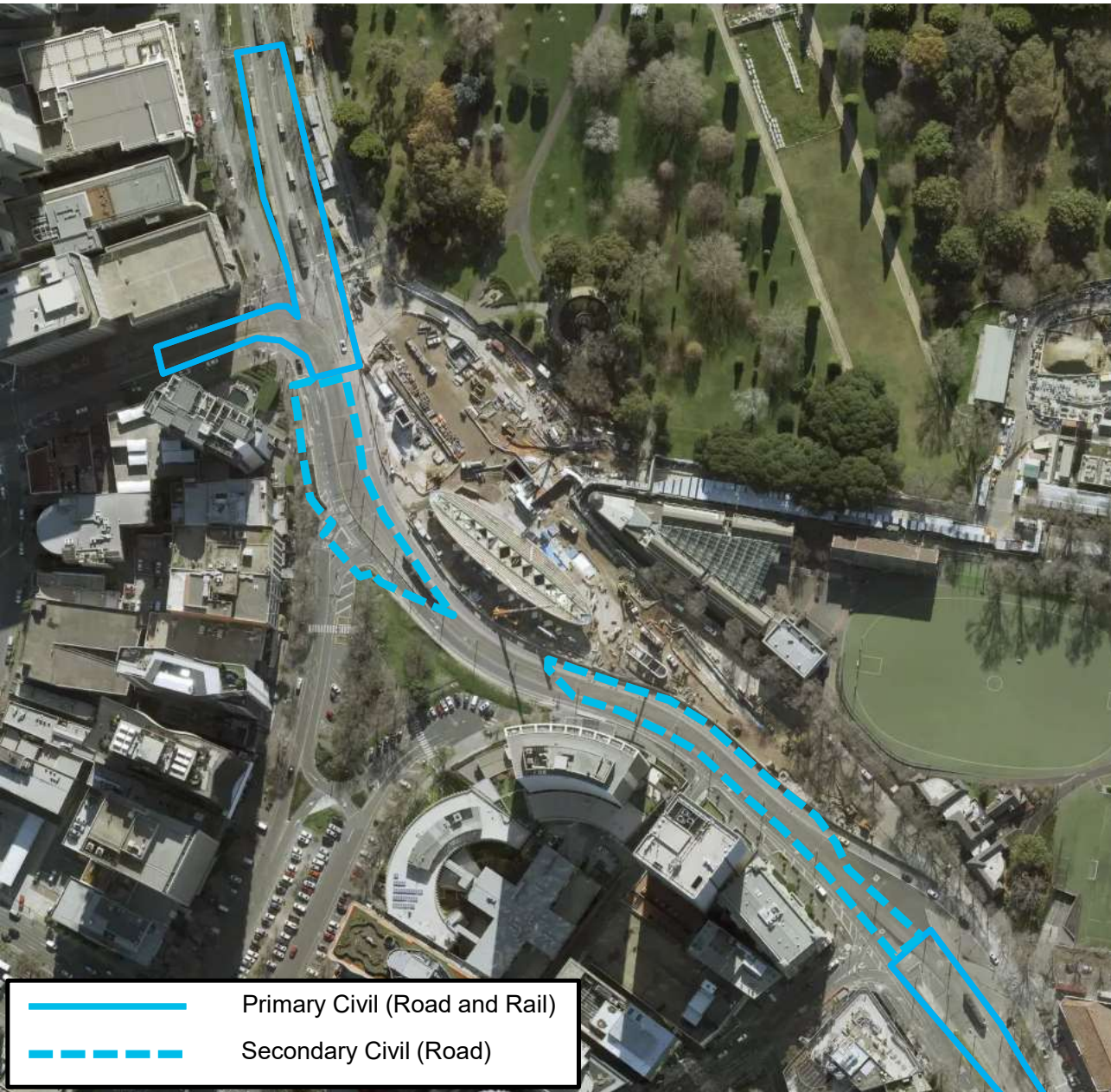


Primary and secondary demolition works

Demolition works include: Removal of Tram Stop 20, overhead wire poles, roadway, tram tracks, tram infrastructure

1hr LAeq (dB)	
Receiver	Demolition
Royal Domain (Tower & Plaza)	75-80dB
Hallmark	80-85dB
Domain Hill	75-80dB
Domain	75-80dB
Botanica	75-80dB
Princeton	75-80dB
Promenade	75-80dB
City Condos	75-80dB

Noise levels relate to demolition activities closest to the receiver



NOISE MODELLING

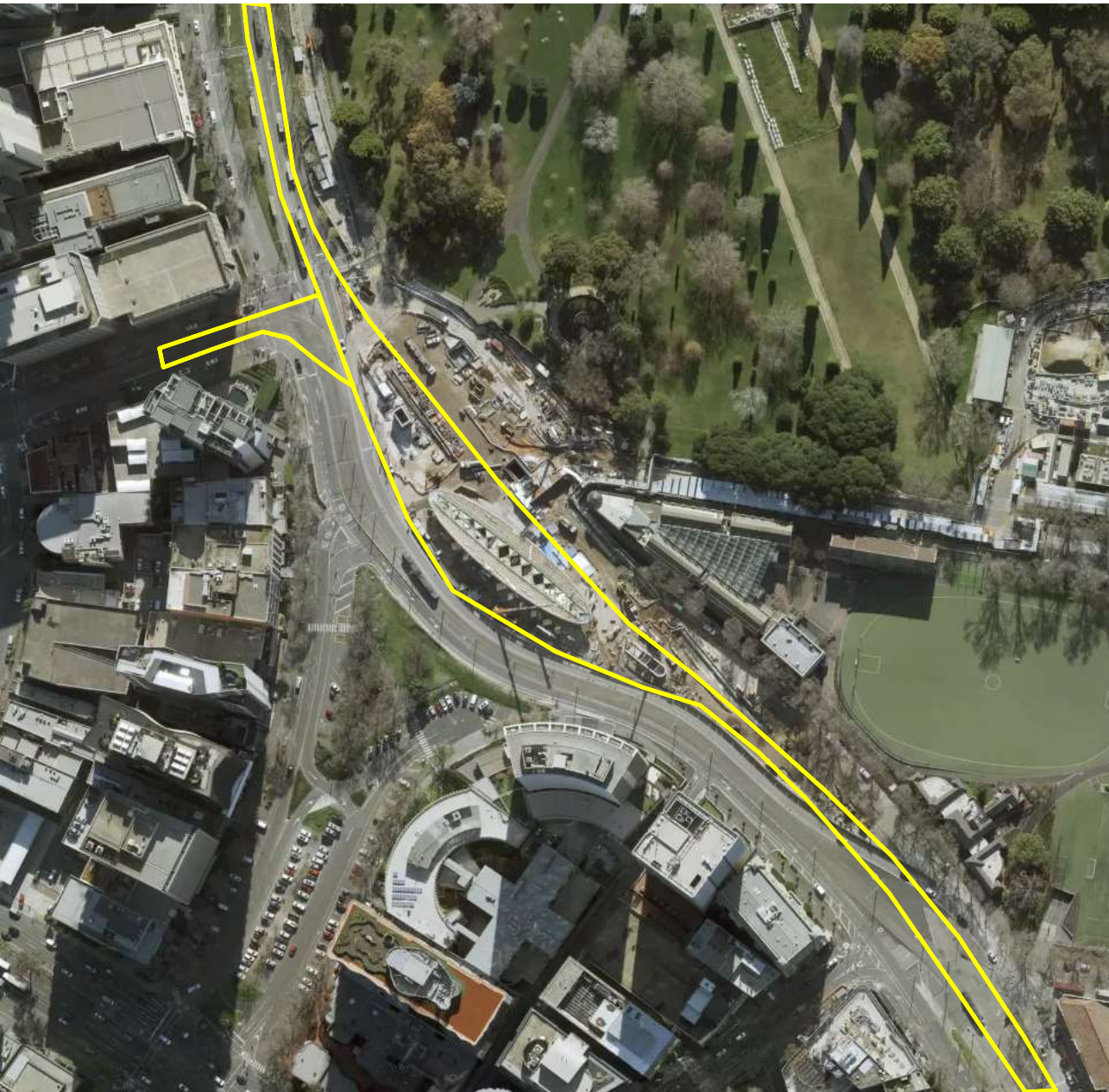


Primary and secondary civil works

Primary and secondary civil works include: Tram infrastructure installation and road construction

1hr LAeq (dB)	
Receiver	Civil Works
Royal Domain (Tower & Plaza)	70-75dB
Hallmark	75-80dB
Domain Hill	70-75dB
Domain	75-80dB
Botanica	75-80dB
Princeton	70dB
Promenade	70dB
City Condos	70dB

Noise levels relate to civil activities closest to the receiver



NOISE MODELLING



Tram commissioning works

Tram commissioning works include: Hanging overhead tram wires, minor tram platform works, installation of signage

1hr LAeq (dB)	
Receiver	Tram Commissioning
Royal Domain (Tower & Plaza)	55-60dB
Hallmark	55-60dB
Domain Hill	55-60dB
Domain	55-60dB
Botanica	55-60dB
Princeton	55-60dB
Promenade	55-60dB
City Condos	55-60dB

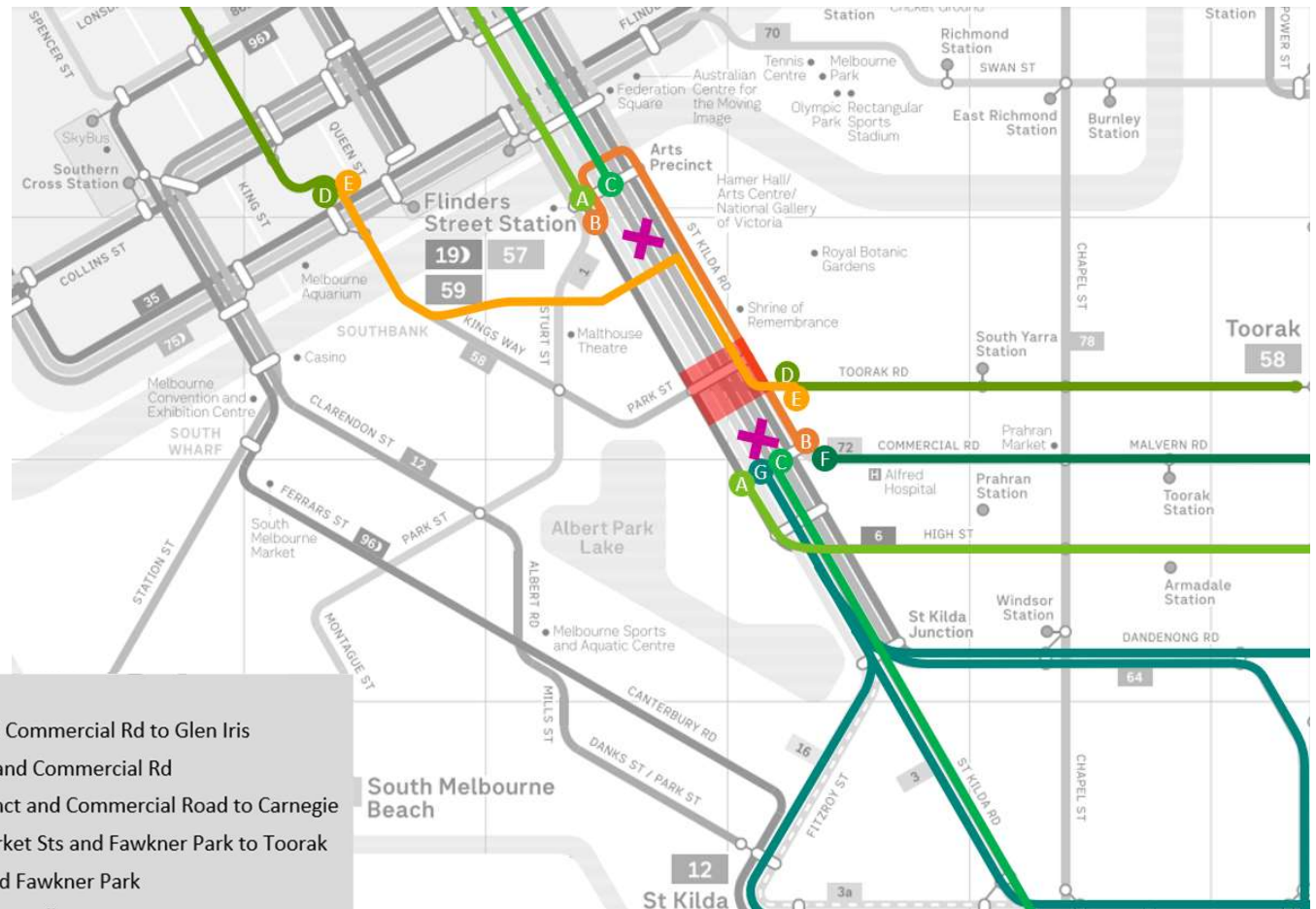
Noise levels relate to commissioning activities closest to the receiver



YARRA TRAMS: BUS REPLACEMENT SERVICES

TRAM / BUS ROUTES – ST KILDA RD

- Nine tram routes affected
- Buses will replace trams between Arts Precinct and Commercial Road (except for route 58)
- Buses will run as a continuous shuttle – once full it will go.

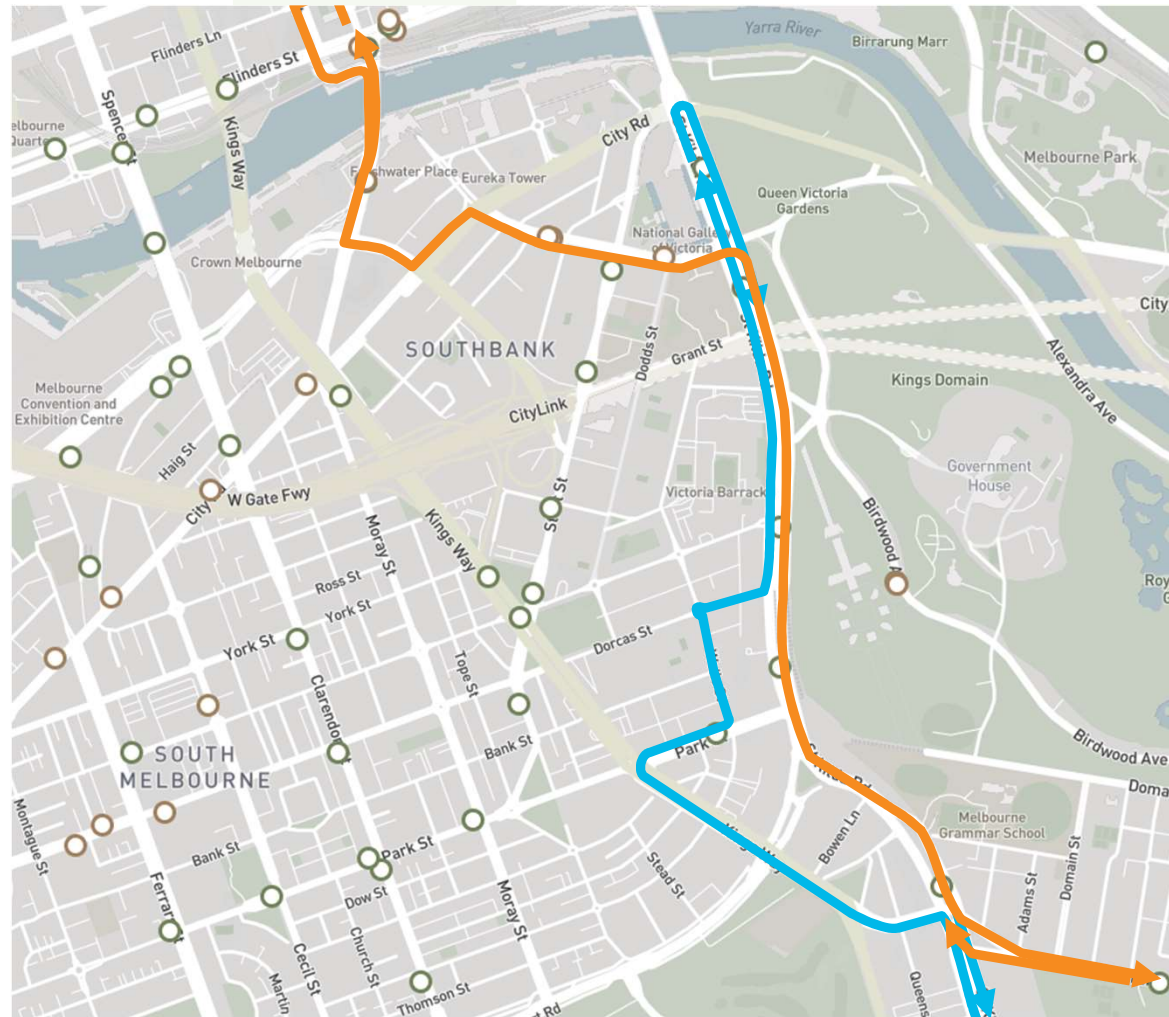


Key

- A** Route 6 operates in two sections, Moreland to Arts Precinct and Commercial Rd to Glen Iris
- B** Frequency based shuttle bus for all lines between Arts Precinct and Commercial Rd
- C** Route 67 operates in two sections, Melbourne Uni to Arts Precinct and Commercial Road to Carnegie
- D** Route 58 operates in two sections, West Coburg to Flinders/Market Sts and Fawcner Park to Toorak
- E** Route 58 Bus replacement runs between Flinders/Market Sts and Fawcner Park
- F** Route 72 operates from St Kilda Rd and Commercial Rd to Camberwell
- G** Route 3/3a, 5, 16 and 64 operate from Commercial Rd to their respective termini
- Work zone**

TRAM / BUS ROUTES – ST KILDA RD

- Buses will run along St Kilda Rd southbound.
- Buses will run along a detour northbound.
- Plans have been submitted to council and subject to approval.



BUS / TRAM INTERCHANGES

EACH INTERCHANGE WILL HAVE:

- ACCESSIBLE TAXIS
- YARRA TRAMS CUSTOMER SERVICE STAFF AND TRAFFIC OFFICERS TO HELP PASSENGER MOVEMENT



ARTS PRECINCT

- Trams will terminate at existing Arts Precinct stop, shunting at a crossover.
- Buses will operate from the citybound side of St Kilda Rd only, outside the NGV, completing a U-turn at the lights.

Commercial Rd

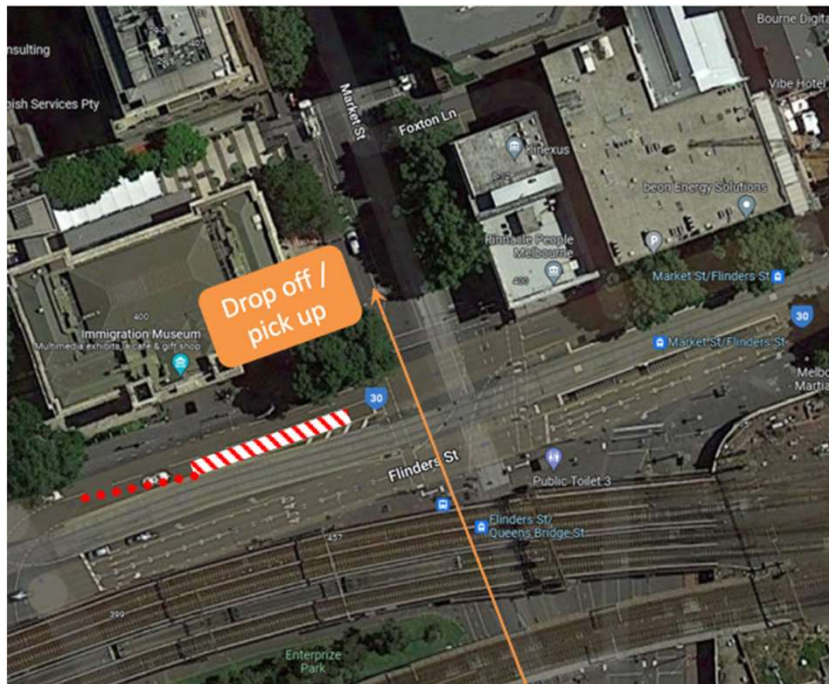
- Main interchange point for all St Kilda Rd trams.
- Similar to Grand Prix set up – route 72 tram shunting at the end of Commercial Rd to limit congestion on St Kilda Rd.
- Travellers Aid available to help transport passengers direct to Alfred Hospital.



ROUTE 58

Buses will operate between a temporary stop in Flinders and Market St to Stop 123 Fawkner Park.

Flinders St tram/bus interchange – northside of Market St



Toorak Rd stop 123 tram/bus interchange





CREATIVE PROGRAM UPDATE

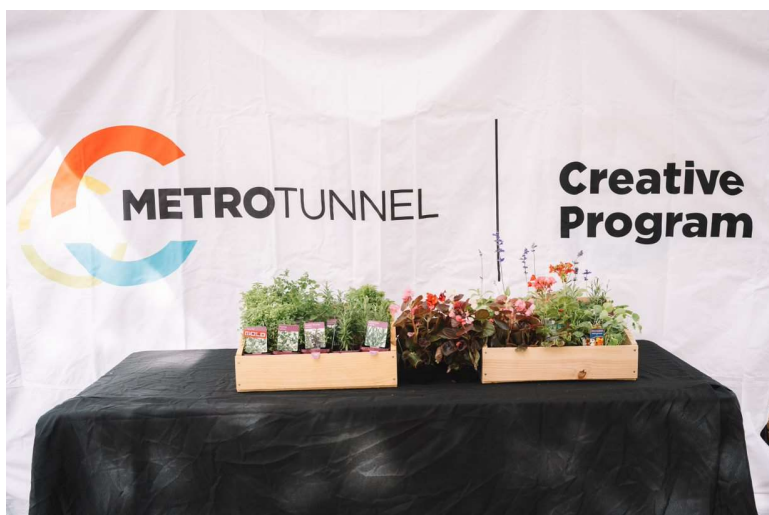
THANK YOU TO SHAGGY DOO FROM ALL THE DOGS!

15 October 2022



PLEASE JOIN US FOR THE FINAL ALBERT ROAD RESERVE EVENT

9am-1pm, Thursday 27 October





QUESTIONS?