



# STATE LIBRARY STATION COMMUNITY REFERENCE GROUP

## CROSS YARRA PARTNERSHIP D&C

**Kate Walshe**, Communications and Stakeholder Engagement Director, CYP D&C

**Melinda Kelly**, State Library Stakeholder Engagement Manager, CYP D&C

**Terese Scalise**, Communications and Stakeholder Engagement Director, CYP PCO

**6 February, 2023**



# Agenda

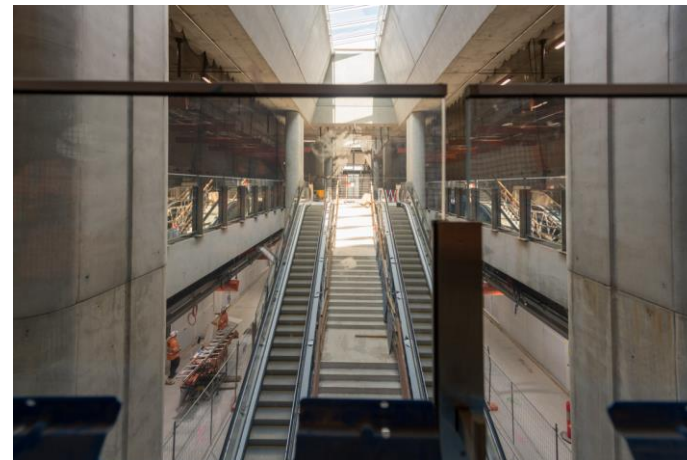


1. Precinct Updates
2. State Library Station Update
3. Creative Program update

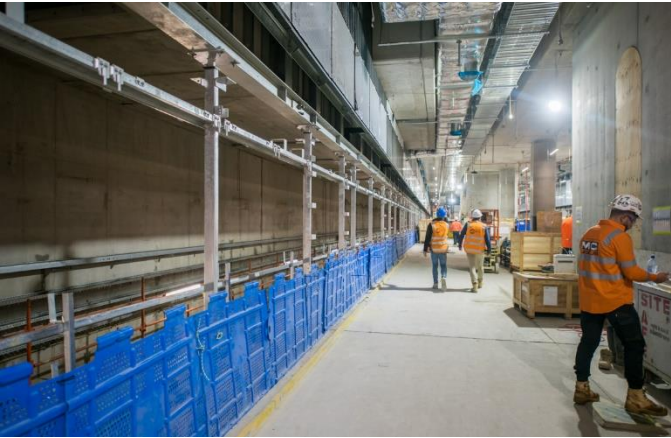


# Precinct Updates

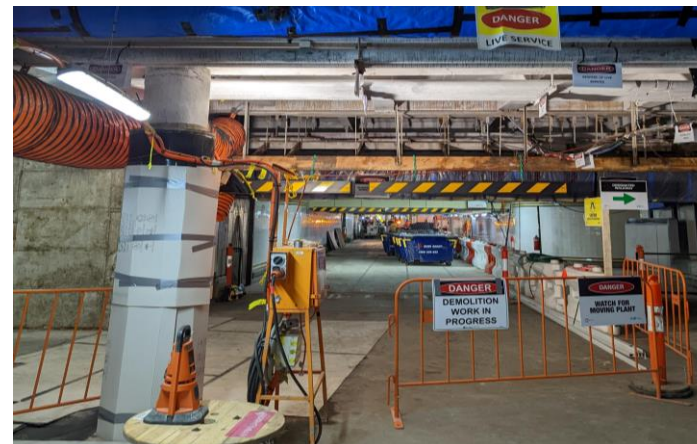
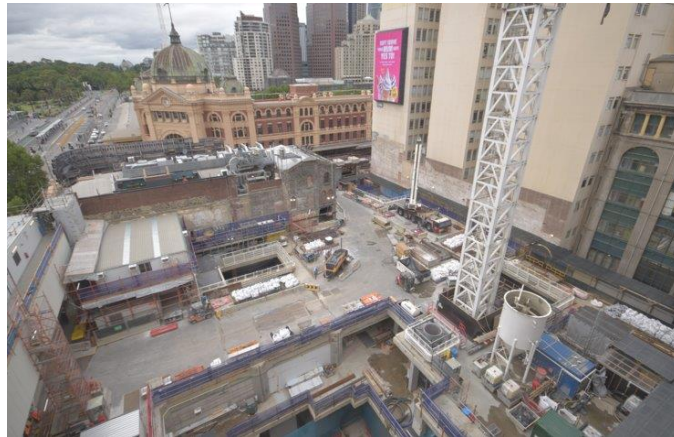
# Arden



# Parkville



# Town Hall



# Domain – Anzac Station





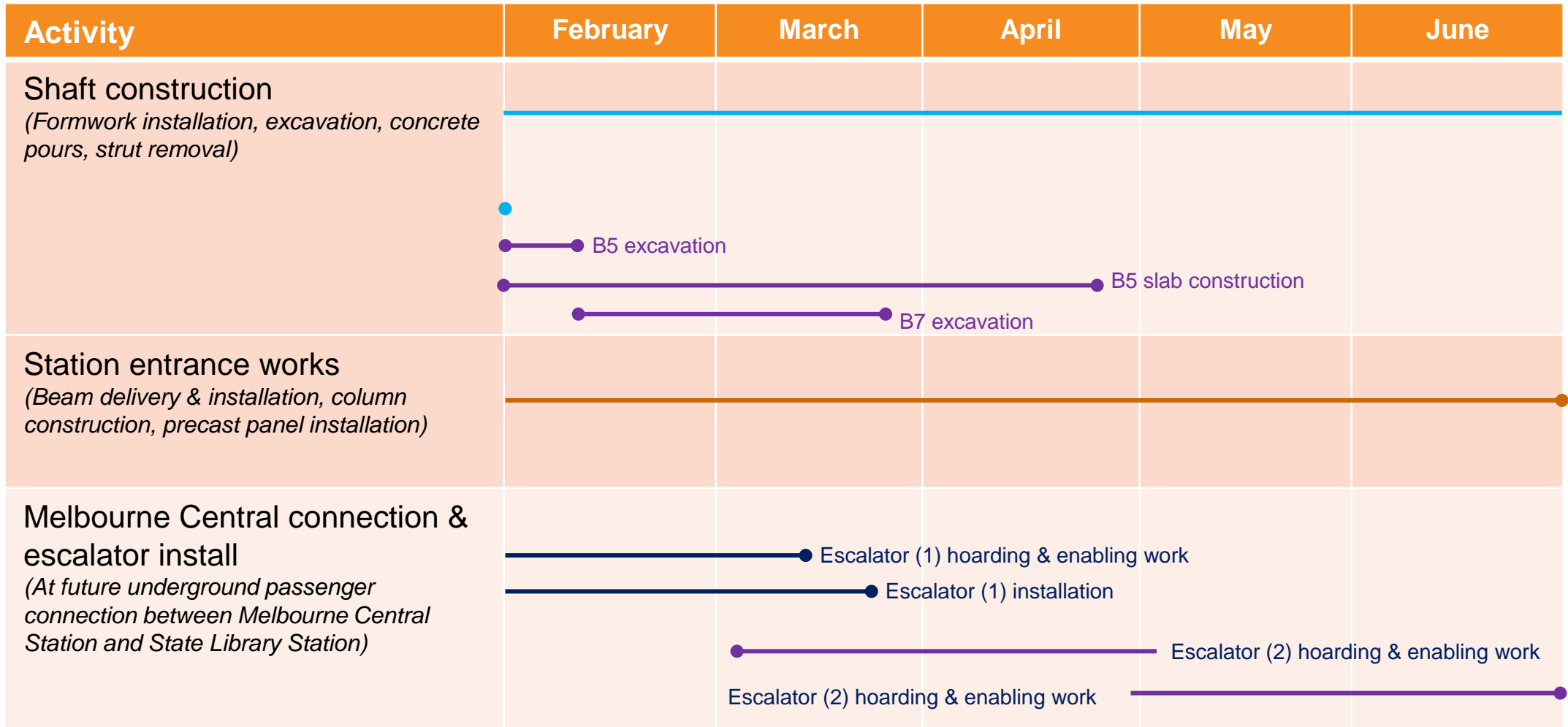
# State Library Station Update



# LA TROBE STREET SITE



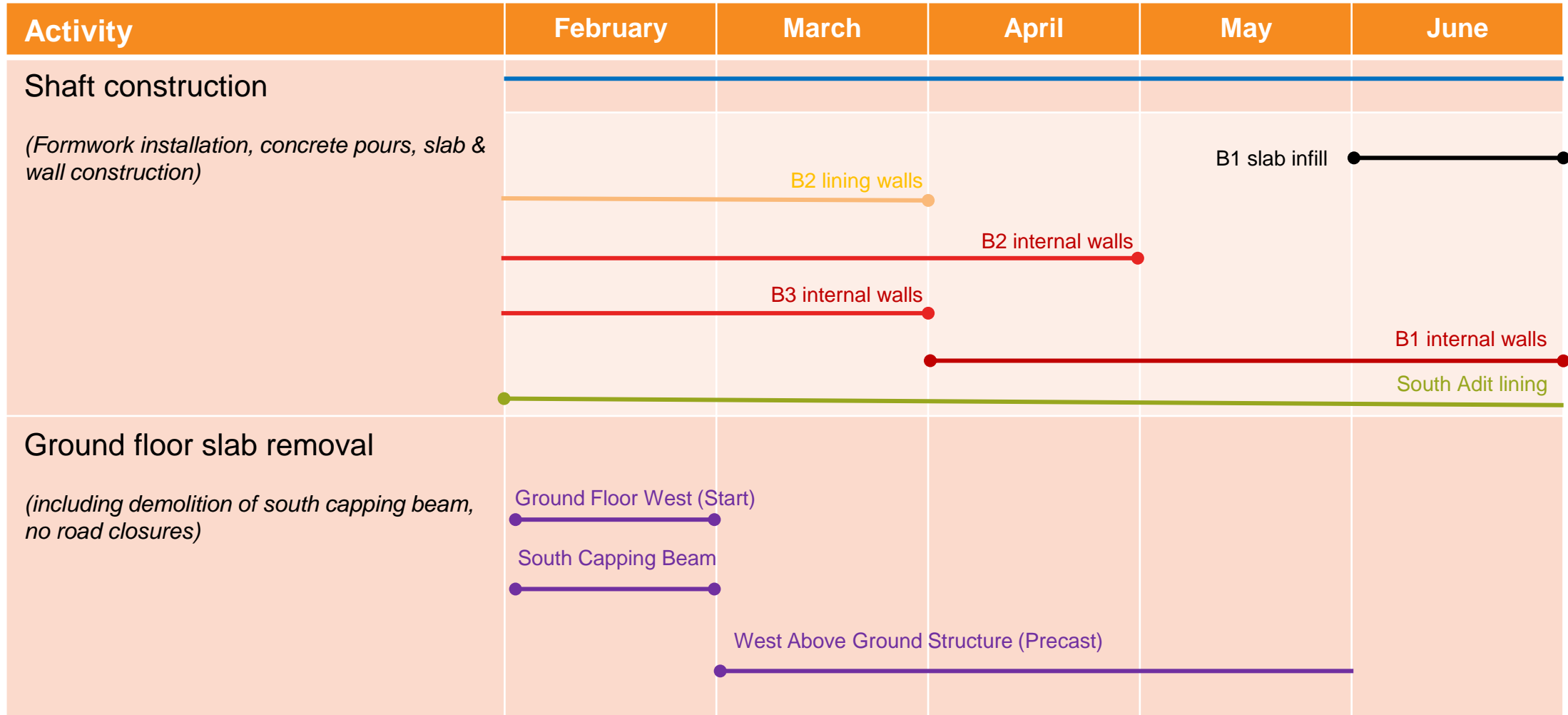
# LA TROBE STREET SITE



# LITTLE LA TROBE STREET SITE



# LITTLE LA TROBE STREET SITE



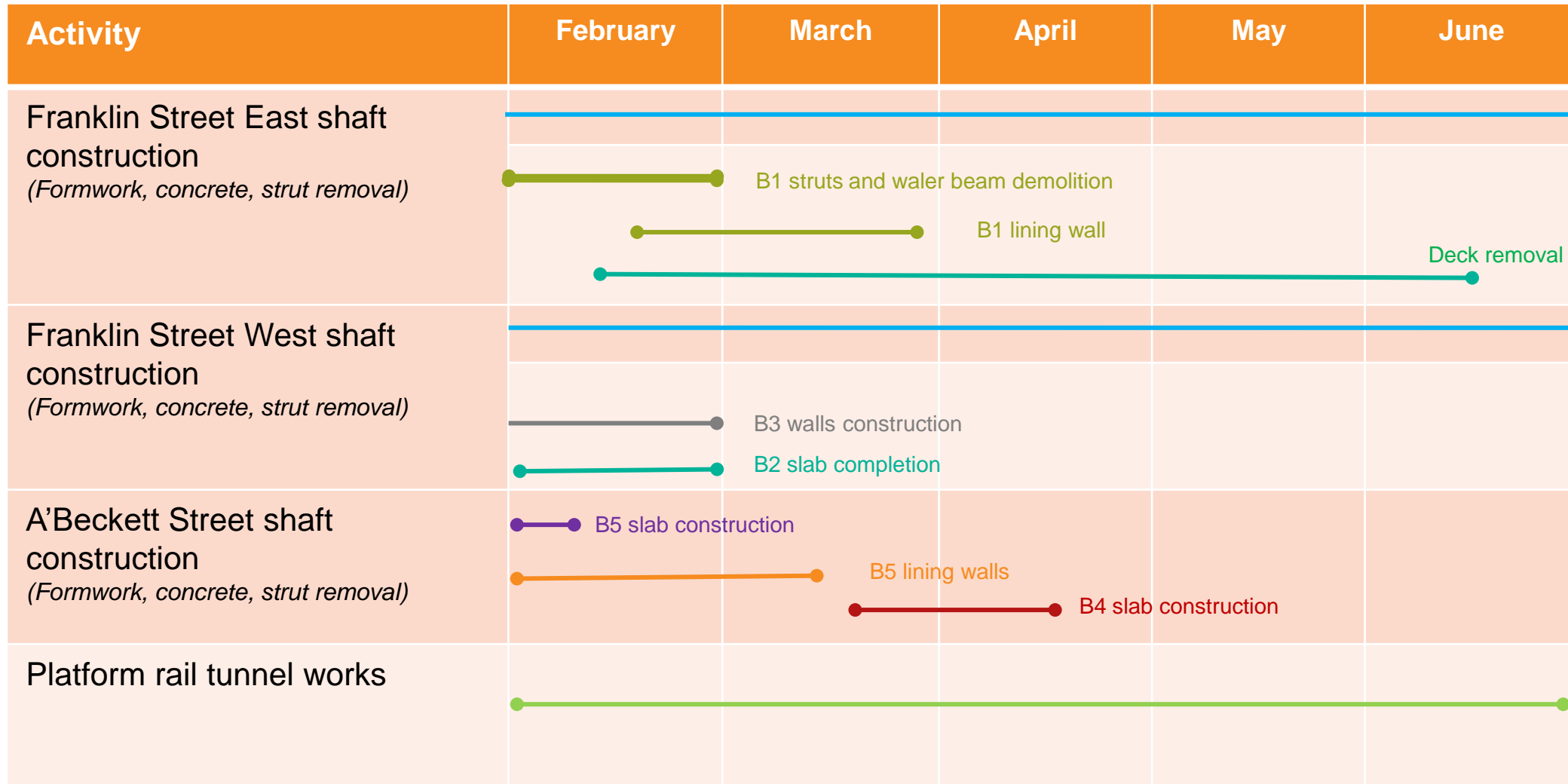
# FRANKLIN AND A'BECKETT STREET SITES



# FRANKLIN AND A'BECKETT STREET SITES



# FRANKLIN AND A'BECKETT STREET SITES



# Questions





# Creative Program

February 2023



# Carla Gottgens: The Guardians

Franklin Street East shed



# Midsumma: A safe(r) space

Franklin Street frames

