

Legend

- VicTrackBoundaryDataPK2
- Construction_Boundary_Main_Rd

SEP_point

- Air Quality Monitoring Point
- ★ Spill Kit
- ☒ Waste area

SEP polygon

- Layer
- ☐ Lay Down
- ☐ SITE COMPOUND

LAH-M00-CSV-XRF-SAB-0008

- Layer
- SRZ - Structure Root Zone
- TPZ - Tree Protection Zone
- ☒ Threatened Native Vegetation
- ☒ NoGo Zones

Retain

- ☒ Retained

Remove

- ☒ Removed

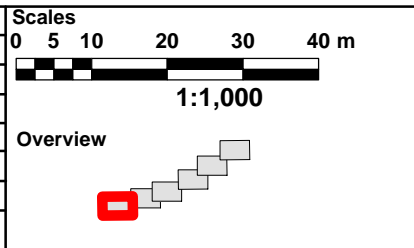
Native Trees

- ☒ Retain_Remove
- ☒ Removed
- ☒ Retained

Sensitive Receivers

- ☒ Sensitive Receivers

Rev	Description	Date	Approved
01	ISSUED FOR INFORMATION	25.07.2016	
00	ISSUED FOR INFORMATION	22.10.2015	
C	ISSUED FOR INFORMATION	17.09.2015	
B	ISSUED FOR INFORMATION	19.08.2015	
A	ISSUED FOR INFORMATION	19.12.2014	



Client

Status

CONSTRUCTION ONLY

Original Size	A3	Drawn	GIS
Coordinate System	MGA ZONE 55	Designed	
Height Datum	AHD	Date Printed	25/07/2016
Filename:	Main Road_SEP.mxd		

MAIN ROAD

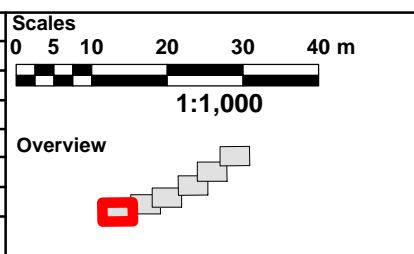
SITE ENVIRONMENT PLAN

SHEET 1 OF 6

Document No. **LAH-EN-PLN-0006-01**



Rev	Description	Date	Approved
01	ISSUED FOR INFORMATION	25.07.2016	
00	ISSUED FOR INFORMATION	22.10.2015	
C	ISSUED FOR INFORMATION	17.09.2015	
B	ISSUED FOR INFORMATION	19.08.2015	
A	ISSUED FOR INFORMATION	19.12.2014	



Client

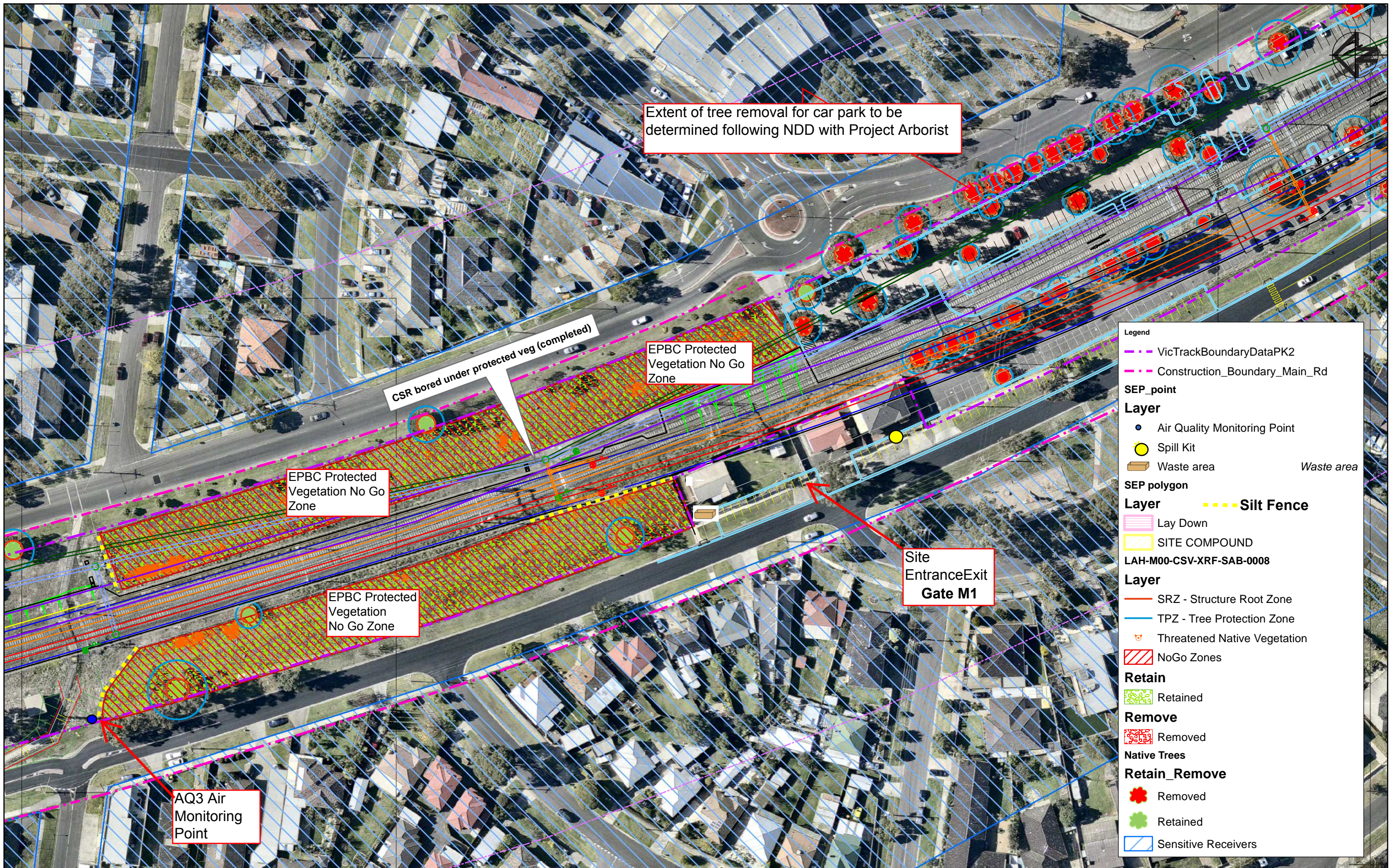
Status			
CONSTRUCTION ONLY			
Original Size	A3	Drawn	GIS
Coordinate System	MGA ZONE 55	Designed	
Height Datum	AHD	Date Printed	25/07/2016
Filename:	Main Road_SEP.mxd		

MAIN ROAD

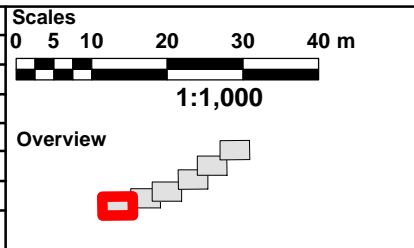
SITE ENVIRONMENT PLAN

SHEET 2 OF 6

Document No. **LAH-EN-PLN-0006-01**



Rev	Description	Date	Approved
01	ISSUED FOR INFORMATION	25.07.2016	
00	ISSUED FOR INFORMATION	22.10.2015	
C	ISSUED FOR INFORMATION	17.09.2015	
B	ISSUED FOR INFORMATION	19.08.2015	
A	ISSUED FOR INFORMATION	19.12.2014	



Client

Status

CONSTRUCTION ONLY

Original Size	A3	Drawn	GIS
Coordinate System	MGA ZONE 55	Designed	
Height Datum	AHD	Date Printed	25/07/2016
Filename:	Main Road_SEP.mxd		

MAIN ROAD

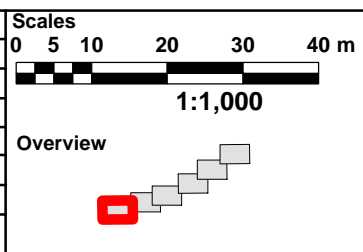
SITE ENVIRONMENT PLAN

SHEET 3 OF 6

Document No. LAH-EN-PLN-0006-01



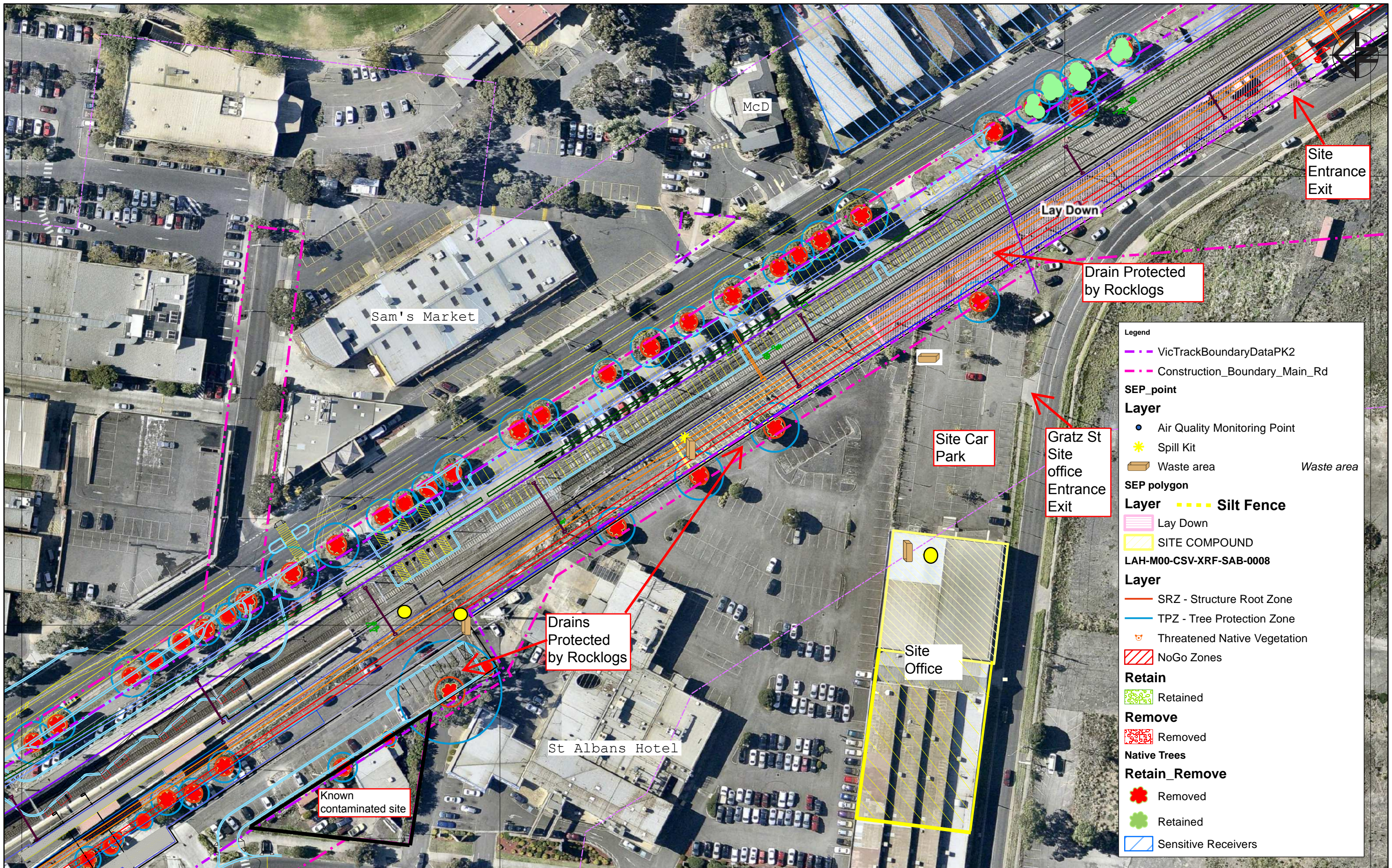
Rev	Description	Date	Approved
01	ISSUED FOR INFORMATION	25.07.2016	
00	ISSUED FOR INFORMATION	22.10.2015	
C	ISSUED FOR INFORMATION	17.09.2015	
B	ISSUED FOR INFORMATION	19.08.2015	
A	ISSUED FOR INFORMATION	19.12.2014	



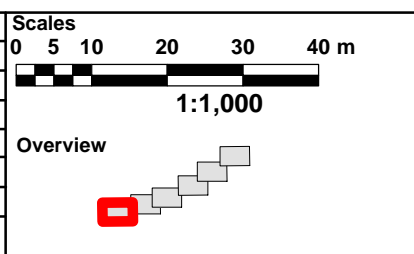
Status			
CONSTRUCTION ONLY			
Original Size	A3	Drawn	GIS
Coordinate System	MGA ZONE 55	Designed	
Height Datum	AHD	Date Printed	25/07/2016
Filename:	Main Road_SEP.mxd		



MAIN ROAD	
SITE ENVIRONMENT PLAN	
SHEET 4 OF 6	
Document No.	LAH-EN-PLN-0006-01



Rev	Description	Date	Approved
01	ISSUED FOR INFORMATION	25.07.2016	
00	ISSUED FOR INFORMATION	22.10.2015	
C	ISSUED FOR INFORMATION	17.09.2015	
B	ISSUED FOR INFORMATION	19.08.2015	
A	ISSUED FOR INFORMATION	19.12.2014	



Client

Status			
CONSTRUCTION ONLY			
Original Size	A3	Drawn	GIS
Coordinate System	MGA ZONE 55	Designed	
Height Datum	AHD	Date Printed	25/07/2016
Filename:	Main Road_SEP.mxd		

MAIN ROAD

SITE ENVIRONMENT PLAN

SHEET 5 OF 6

Document No. **LAH-EN-PLN-0006-01**



AQ1 Air Monitoring Point

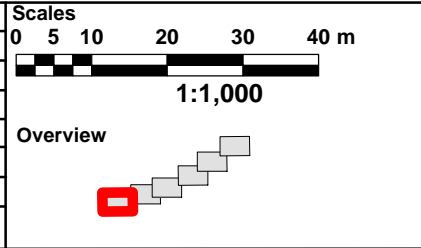
NDD Waste Storage Area

Site Entrance Exit GATE M5

Lay Down

Legend	
--- VicTrackBoundaryDataPK2	
--- Construction_Boundary_Main_Rd	
SEP_point	
Layer	
● Air Quality Monitoring Point	
* Spill Kit	
Waste area	Waste area
SEP polygon	
--- Silt Fence	
--- Lay Down	
--- SITE COMPOUND	
LAH-M00-CSV-XRF-SAB-0008	
Layer	
--- SRZ - Structure Root Zone	
--- TPZ - Tree Protection Zone	
Threatened Native Vegetation	
--- NoGo Zones	
Retain	
Retained	
Remove	
Removed	
Native Trees	
Retain_Remove	
Removed	
Retained	
--- Sensitive Receivers	

Rev	Description	Date	Approved
01	ISSUED FOR INFORMATION	25.07.2016	
00	ISSUED FOR INFORMATION	22.10.2015	
C	ISSUED FOR INFORMATION	17.09.2015	
B	ISSUED FOR INFORMATION	19.08.2015	
A	ISSUED FOR INFORMATION	19.12.2014	



Client

Status			
CONSTRUCTION ONLY			
Original Size	A3	Drawn	GIS
Coordinate System	MGA ZONE 55	Designed	
Height Datum	AHD	Date Printed	25/07/2016
Filename:	Main Road_SEP.mxd		

MAIN ROAD

SITE ENVIRONMENT PLAN

SHEET 6 OF 6

Document No. **LAH-EN-PLN-0006-01**