



Community Information Session

Tuesday 30 January 2024

See inside for details



**SUBURBAN
RAIL LOOP
EAST**



Works Notification

Works in your area

Glen Waverley | January - March 2024

Works are continuing in Glen Waverley to deliver SRL East for Melbourne and Victoria, including a new underground train station connected to the existing station at this location.

We're relocating underground services such as power, gas, telecommunications and sewer, on Myrtle Street, Montclair Avenue and Coleman Parade in 2024.

We'll also be building a site compound on Coleman Parade for the team to work from and store materials.

These works will be carried out in stages in 2024 and are required to prepare for major construction activities.

Works will begin in Glen Waverley from **early-January for up to eight weeks.**

They will be undertaken during day-time working hours. If night works are required, residents and traders will be notified ahead of time.

Day-time working hours

7am - 6pm, Monday to Friday

7am - 1pm, Saturday

How we will manage our works

We will minimise impacts to the community by:

- Positioning equipment as far as possible from residents and businesses and turning off when not in use
- Implementing measures to minimise noise, dust and vibration impacts, including applying water during cutting and drilling, and street sweeping
- Monitoring of noise, dust and vibration levels
- Coordinating disruptions with other construction in the area
- Installing road safety and detour signage.

Noise impacts

As with all major infrastructure projects, surrounding communities may experience some impacts during construction.

The project will support businesses and residents to ensure people can continue to live, work, study and shop in their local community.

Please contact us on **1800 105 105** to discuss support available if you are impacted by our works.

Works happening in your area

151-155 COLEMAN PARADE (Site compound) From early-January

- Establishing a site compound
- Installing temporary fencing
- Tree and vegetation removal
- On-street parking closures on Myrtle Street
- Demolition of structures
- Intermittent traffic management and footpath closures.

COLEMAN PARADE (site investigations) From mid-January for up to one week

- Site investigations within the Glen Waverley Station car park
- Car space closures.

EUNEVA WEST CAR PARK (site investigations) From mid-January for up to two weeks

- Site investigations within Euneva West car park, Railway Parade North, Glen Waverley Station car park and Euneva Avenue
- Intermittent car space closures
- Lane closures intermittently on Railway Parade North and Euneva Avenue
- Access to the car park will be maintained at all times.

MYRTLE STREET AND MONTCLAIR AVENUE (underground services relocations) From late-January for up to eight weeks

- Utility relocation works including trenching and drilling activities
- Staged road closures with detours in place
- On-street parking closures on Montclair Avenue
- Temporary work site installation
- Tree and vegetation removal
- Kerb and asphaltting reinstatement.

Future works

Further utility relocation works, including closures of Coleman Parade, will continue throughout 2024. We'll also be demolishing structures and establishing a site along Myrtle Street to prepare for realignment works. We will provide further details of these works over the coming months.

Traffic changes

Traffic changes are needed to undertake these works. Vehicle and pedestrian access to homes and businesses will be maintained at all times with help from traffic controllers when required.

Dates

Traffic change

STAGE 1

Mid-January to mid-February

Euneva West car park

- Intermittent closures of up to 40 car spaces for up to two weeks
- Intermittent lane closures on Railway Parade North and Euneva Avenue for up to two weeks

Mid-January to mid-February

Coleman Parade

- Up to 15 car spaces closed for up to one week
- Intermittent traffic management and pedestrian detours in place

Late-January to late-February

Myrtle Street

- Road closure between Montclair Avenue and Bogong Avenue for up to two weeks

STAGE 2

Early-February to early-March

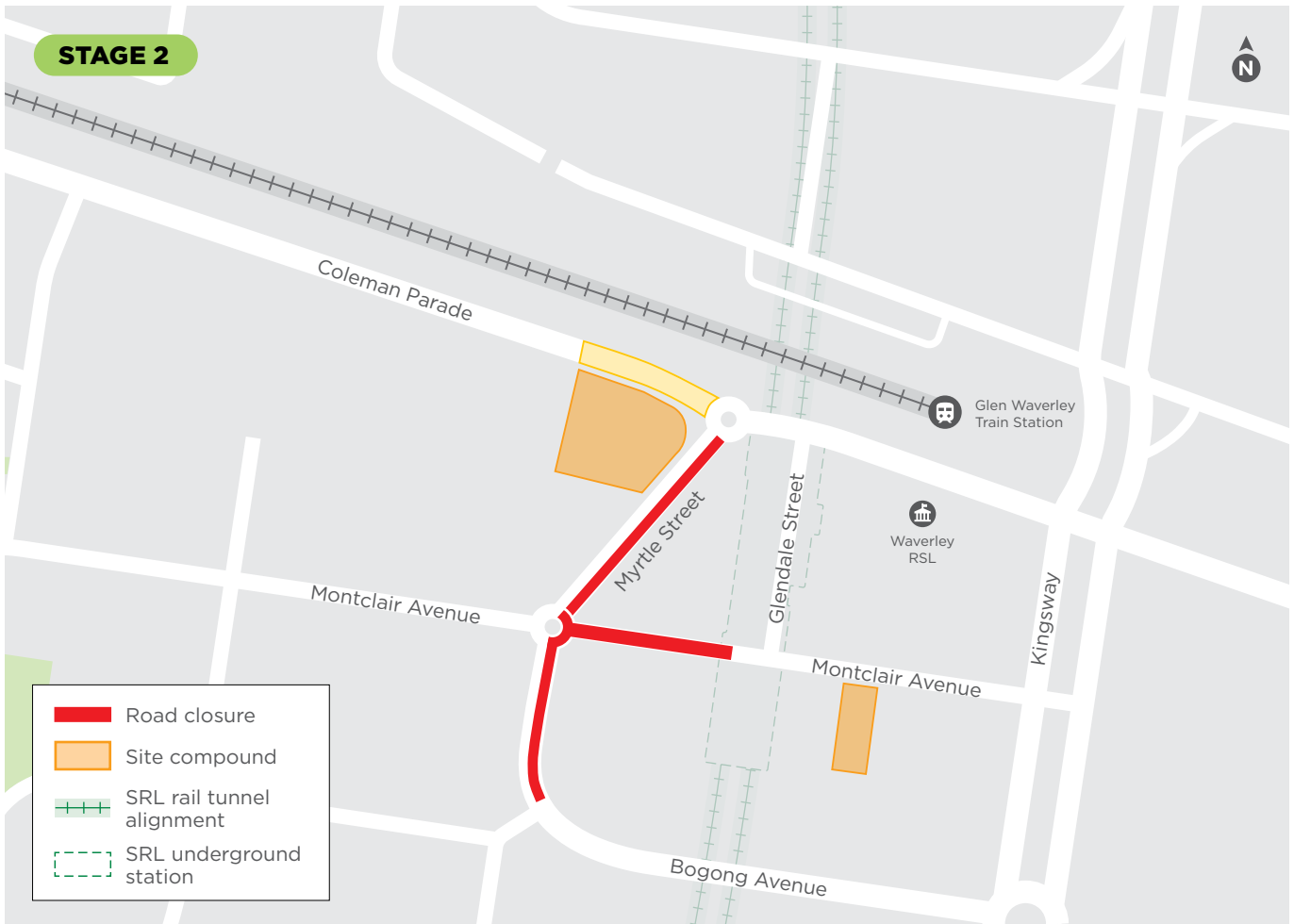
Myrtle Street

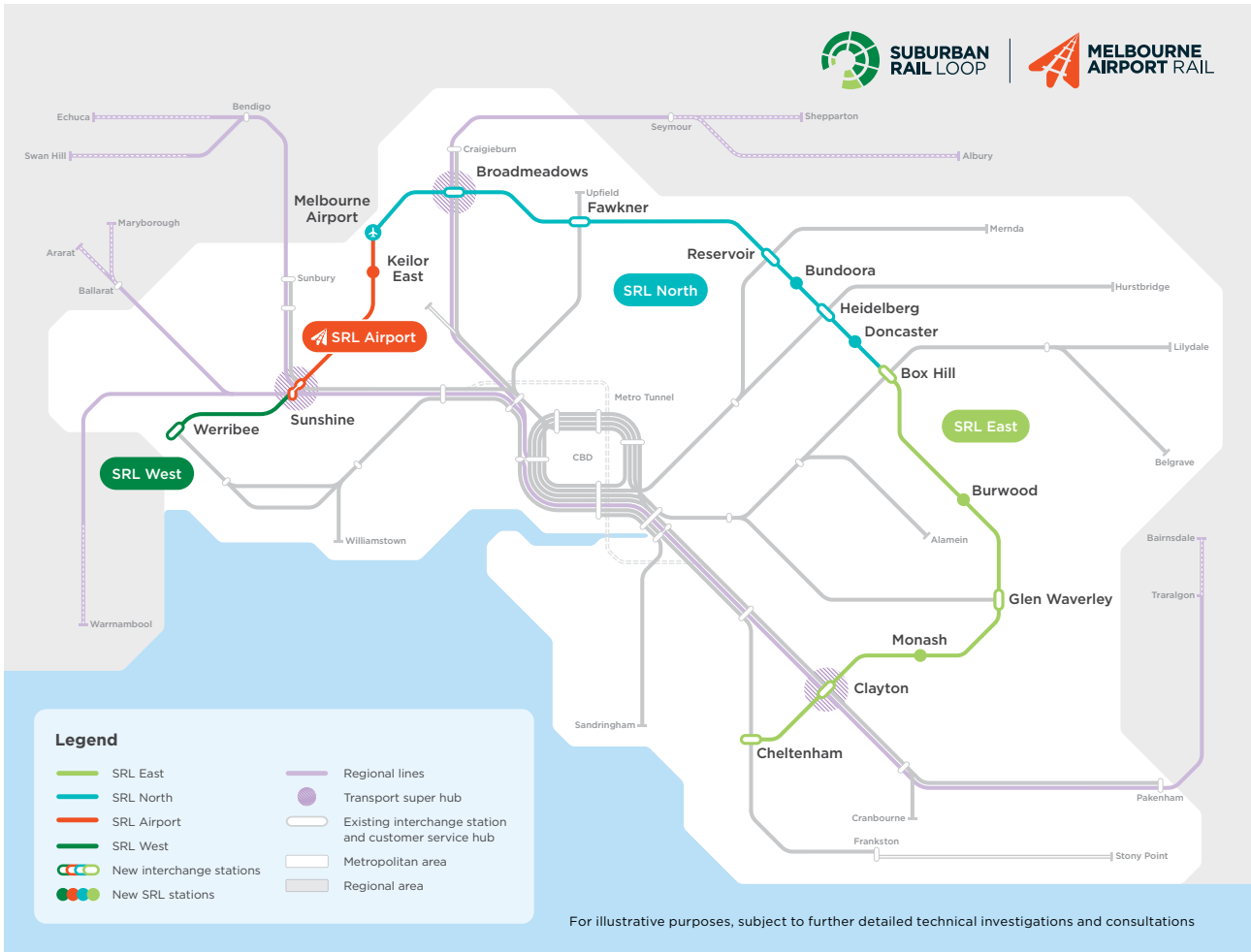
- Southbound lane closure between Coleman Parade and Bogong Avenue for up to four weeks
- Intermittent traffic management and pedestrian detours in place

Early-February to early-March

Montclair Avenue

- Road closure between Myrtle Street and Glendale Street with up to 10 on-street parking closures for up to four weeks





Thank you for your patience and cooperation as we progress the delivery of SRL East and a new underground station at Glen Waverley



Community Information Session

Tuesday 30 January 2024
4pm - 7pm
Waverley RSL
161 Coleman Parade
Glen Waverley

Drop in to meet the team and find out more about upcoming works.

Scan the QR code for details.



Construction across all SRL East sites will shut down over the holiday period. Our last working day will be **Friday 22 December 2023** and we will return in the new year on **Monday 8 January 2024**.

More information

To find out more about Suburban Rail Loop:

- 🏠 suburbanrailloop.vic.gov.au
- ✉ contact@srla.vic.gov.au
- ☎ 1800 105 105 (24 hours a day, 7 days a week)

Suburban Rail Loop Authority
PO Box 24214, Melbourne VIC 3001



Interpreter Service (03) 9209 0147

It should be noted that this information is current at the time of printing, however changes may occur. Please visit suburbanrailloop.vic.gov.au for the latest updates.