

# Works Information

MAY 2024



## Building the cycling veloway

### Upcoming travel disruptions on Footscray Road

The West Gate Tunnel Project is creating a new veloway, a 2.5km-long cycling path that will be an express connection to and from the city. The path will be suspended from the new elevated motorway we're building above Footscray Road and will be lifted into place in sections. To ensure the safety of everyone in the area while we work on and above the road, we'll need to temporarily close lanes and carriageways on Footscray Road.

#### When we'll be working

We'll be working from **8pm Friday 17 May to late October 2024.**

### Works and impacts

#### Stage 1 – Footscray Road lane closures

Single and double lane closure in both directions between Shepherd Bridge and Appleton Dock Road from 8pm Friday 17 May to late August.

#### Stage 2 – Footscray Road eastbound closures

Full closures of the citybound carriageway between Dock Link Road and Appleton Dock Road from 8pm Wednesday 21 August to 5am Wednesday 4 September.

*Please note additional overnight closures of the Dock Link Road intersection will occur from mid-May to mid-June.*

*Further information will be provided closer to these works.*

#### Stage 3 – Sims Street and MacKenzie Road slip lane closures

Weekend closures of the Sims Street Loop (westbound ramp to MacKenzie Road, and Sims Street to Footscray Road westbound) on:

- 8pm Friday 4 October to 5am Monday 7 October
- 8pm Friday 11 October to 5am Monday 14 October
- 8pm Friday 18 October to 5am Monday 21 October.

#### Stage 4 – Walking and cycling path closures

Closures of the walking and cycling path along Footscray Road, between Shepherd Bridge and Pearl River Road, from:

- Tuesday 21 May to Sunday 16 June 2024
- Friday 6 September to Monday 9 September 2024.

### Changes to the way you travel

- Motorists will be able to detour around the full eastbound closure and Sims Street loop closure via Dynon Road
- During this time, businesses on Footscray Road and Sims Street will continue to operate
- Traffic management will be in place, including signage to guide traffic through the area.

### Noise

You may notice construction noise, including intermittent noise at night.

Depending on type of works and if works are expected to create extra noise, the West Gate Tunnel Project team will be in contact with residents and businesses directly.

### Information for cyclists

During these works, the cycling path along Footscray Road will intermittently be diverted onto the Moonee Ponds Creek Trail.

Sign up for updates at [westgatetunnelproject.vic.gov.au](https://westgatetunnelproject.vic.gov.au)

In partnership with



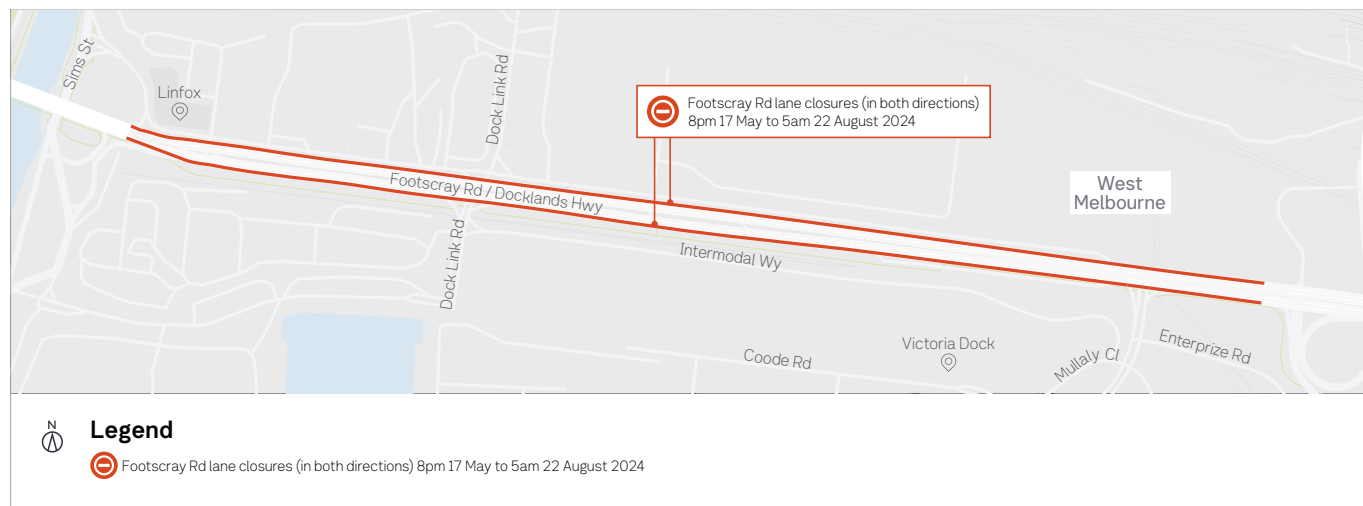
## More information

Please note these stages, dates and details may be subject to change, and there may be other disruptions to traffic during this time. For the latest information and to plan ahead, visit [bigbuild.vic.gov.au/disruptions](https://bigbuild.vic.gov.au/disruptions)

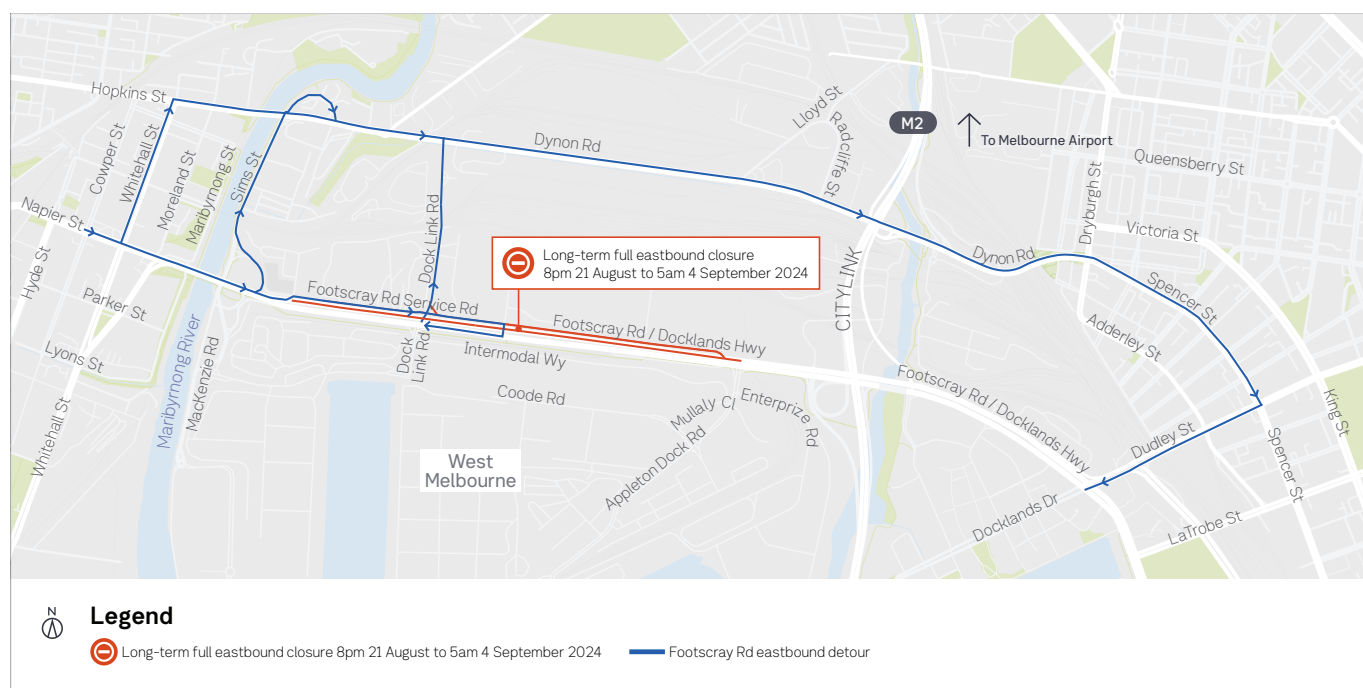
If you have any questions, or would like to receive updates on this work via email, please call us on **1800 105 105** and ask for the 'East Zone'.

We appreciate our work can be disruptive and thank you for your patience while we build the West Gate Tunnel Project.

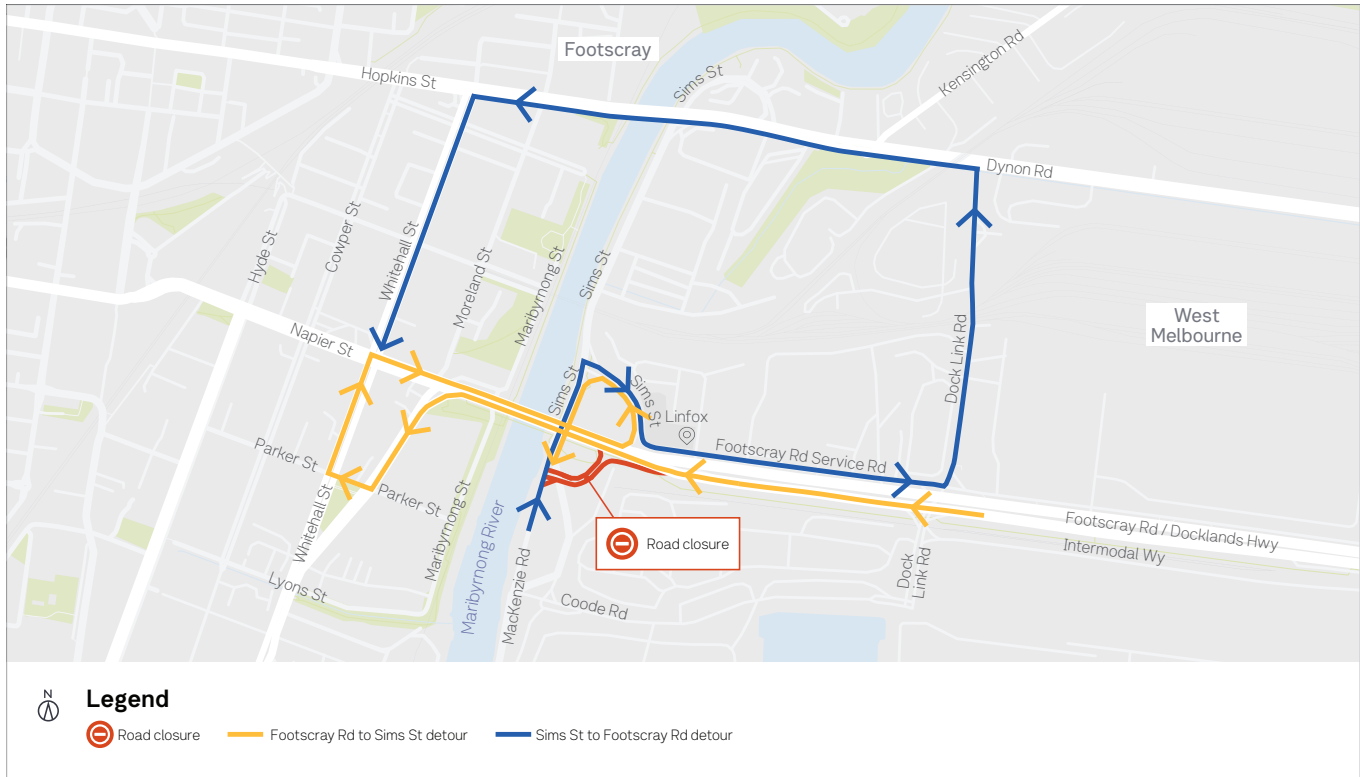
## Stage 1 – Long-term lane closures in both directions



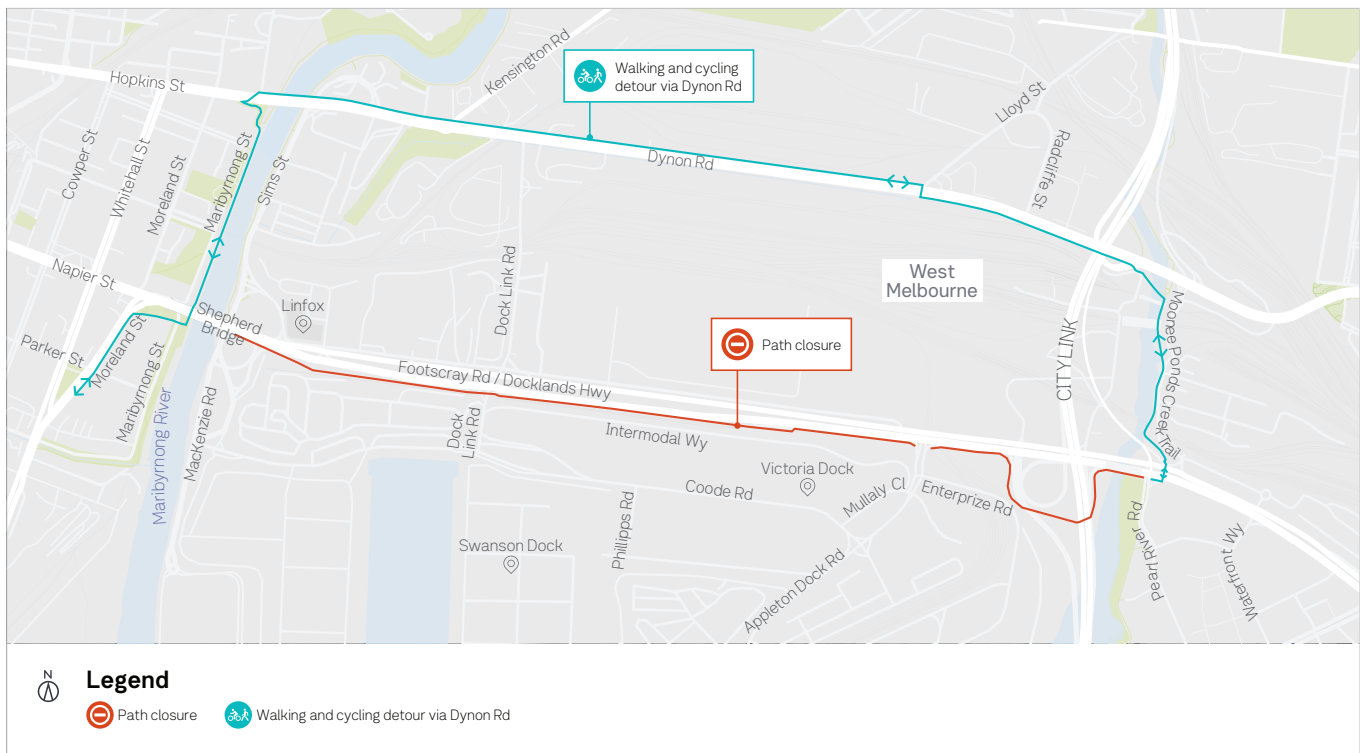
## Stage 2 – Full eastbound closures

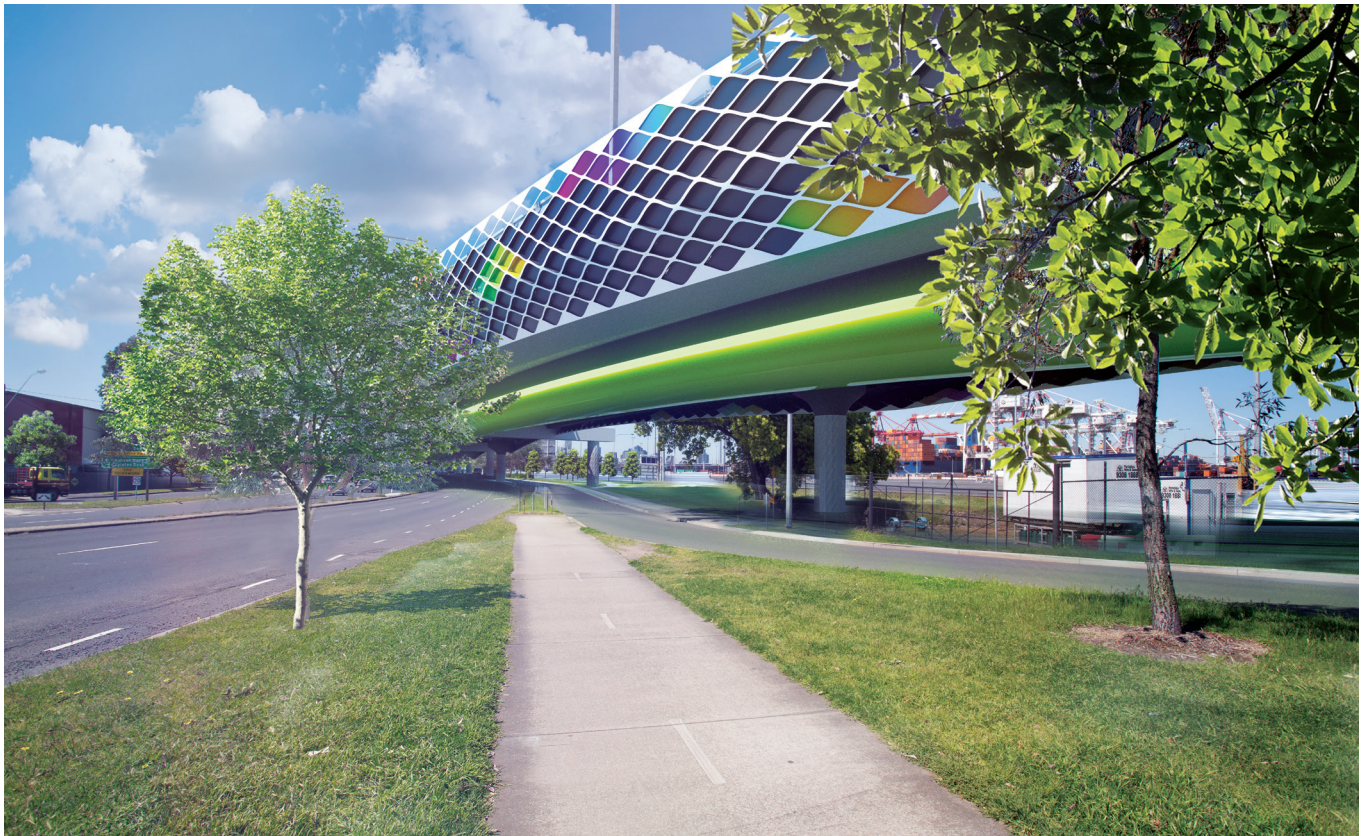


### Stage 3 – Sims Street Southern Loop closure



### Footscray Road walking and cycling path closure





## Creating a continuous bike journey from Melbourne's west to the city

The 2.5km-long veloway from Footscray to the Docklands will provide an off-road route that removes six intersections for cyclists, making trips safer and quicker.

It will rise up from Shepherd Bridge and run to the city side of Moonee Ponds Creek. At 4 metres wide, the veloway will allow plenty of room for a growing number of cyclists, and space to stop for a break or change a tyre.

Features of the veloway will include:

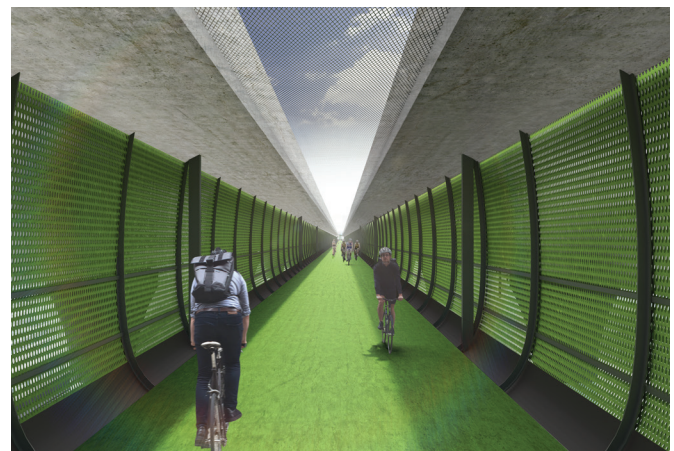
- Full security camera coverage, monitored by a traffic control centre
- Emergency vehicle access into and through the veloway
- Emergency exits with alarms
- Lighting
- A mesh cover and perforated side panels to let light and fresh air through, while keeping cyclists protected.

The current walking and cycling path along Footscray Road will be improved as part of the West Gate Tunnel Project and will continue to be an option for people travelling through the area when the veloway is open.

For more information about the features of the veloway and paths being upgraded through the project, visit [westgatetunnelproject.vic.gov.au](http://westgatetunnelproject.vic.gov.au) or call 1800 105 105.

Visit our **West Gate Tunnel Project visitor Info Centre** on the corner of Somerville Road and Whitehall Street, Yarraville, or catch us at an upcoming local event (details will be available at the project website).

Our West Gate Tunnel Project visitor Info Centre provides a one-stop shop for project information and enquiries.



[westgatetunnelproject.vic.gov.au](http://westgatetunnelproject.vic.gov.au)

1800 105 105 (call anytime)



[info@wgta.vic.gov.au](mailto:info@wgta.vic.gov.au)



For languages other than English please call 9209 0147

Please contact us if you would like this information in an accessible format. If you need assistance due to a hearing or speech impairment, visit [relayservice.gov.au](http://relayservice.gov.au)

