

# Construction update



## State Library Station

August 2024

Construction of the Metro Tunnel Project's State Library Station has entered a new phase, including works on the main station entrance, fit-out of the underground station and reinstatement of community space.

The Metro Tunnel opens in 2025 and will create a new end-to-end rail line from Sunbury in the west to Cranbourne/Pakenham in the south-east, with bigger and more modern trains, and five new stations.

### Works snapshot: August

In July, we implemented a long-term footpath reconfiguration on Swanston Street outside of the La Trobe Street and completed installation of steel and concrete required for the Franklin Street East shaft. We also removed an acoustic shed which housed a concrete pump on A'Beckett Street, installed a goods lift and gates at the La Trobe Street site, and commenced public realm works outside of Melbourne City Baths and Victoria Street.

Construction works within the State Library Station precinct during August 2024 include:

- Main station entrance construction and underground build-out works at the La Trobe, A'Beckett and Franklin Street sites

- Construction of service buildings at the Little La Trobe Street site
- Construction and fit-out of the underground passenger connection to Melbourne Central Station
- Capping beam removal works at the Franklin Street sites
- Public realm works on Swanston, Victoria and Franklin streets.

Further information on these works can be found overleaf or at [metrotunnel.vic.gov.au](https://metrotunnel.vic.gov.au)



**Sign up for updates**  
Subscribe for email and SMS updates  
at [metrotunnel.vic.gov.au/subscribe](https://metrotunnel.vic.gov.au/subscribe)

Construction partner:



Cross  
Yarra  
Partnership



## When are we working?



### Normal construction hours

7am to 6pm, Monday to Friday  
7am to 1pm, Saturdays



### Out of hours

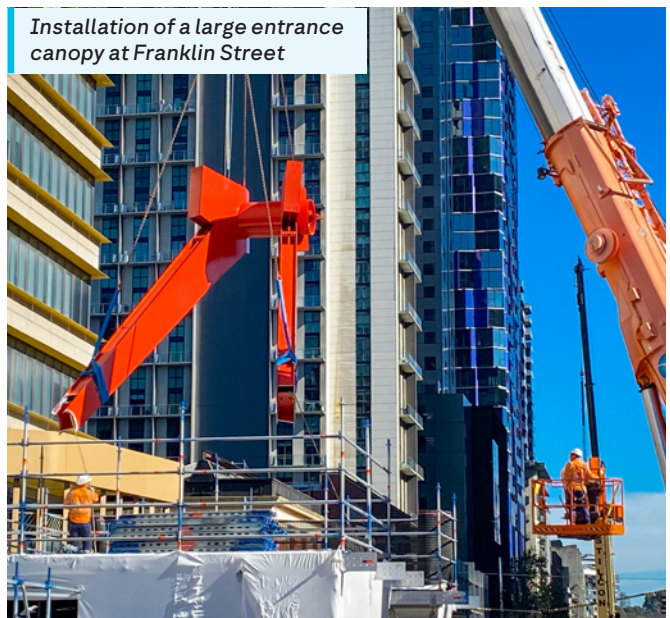
Some works are required to take place out of normal construction hours



### 24 hours

24 hour works are sometimes required during peak construction activities

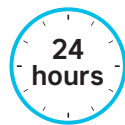
Installation of a large entrance canopy at Franklin Street



## Upcoming works in your area

### La Trobe Street site

**24-hours, Monday to Friday**  
**7am to 12am, Saturdays and Sundays**



**Swanston Street western footpath and northbound bike lane closure**  
**7pm to 3am, Monday to Fridays, as required**

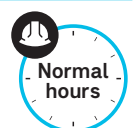
When State Library Station opens, the main station entrance on Swanston Street will lead into an expansive underground passenger foyer, with lifts and escalators transporting passengers down to the customer and ticketing area, towards the train platforms.

Works being undertaken over the next month includes:

- Construction of the main entrance building including floors, walls and columns which involves the use of a crawler crane, elevated work platforms, forklifts, generators, concrete pumps, and other tools and equipment to undertake steel fixing, waterproofing, formwork installation and concrete pours
- Concrete pours involve regular deliveries, the use of concrete trucks, concrete pumps and concrete finishing equipment
- Utilities works are ongoing within the existing La Trobe Street eastbound closure. This involves excavation using a vacuum truck, installation of water and drainage services, including a large gross pollutant trap (GPT), connection of new services to the existing network and disconnection of redundant services. It is likely that there will be some disruption to services later in the year. Impacted stakeholders will be contacted directly
- Works to remove the concrete slab that the tower crane sat on, will commence this month. These works involve use of saw cutters, an excavator with a hammer and trucks to remove the concrete blocks from site. The works are expected to take about two weeks to complete

- Ventilation equipment operation will be required during all works below ground, and site lighting will be required for evening and overnight works
- Regular truck movements to deliver and remove equipment and construction materials are required
- Some works at the La Trobe Street site will generate high levels of noise. Please contact the project team if you have any concerns
- To support a program of critical works to construct the station entrance, a long-term reconfiguration of the footpath adjacent to the site on Swanston Street is now in place. Under this arrangement, pedestrians have been diverted onto the northbound traffic lane and access for cyclists traveling northbound on Swanston Street is maintained via a shared use lane with motorists
- Tram pole and utilities works involving the use of a vacuum truck are required ahead of a Yarra Trams occupation in mid-August. To safely facilitate these works, overnight closures of the Swanston Street western footpath adjacent to the La Trobe Street site are required at night. Cyclists travelling northbound are also required to dismount and follow the direction of traffic management (see map)
- Following the Yarra Trams occupation, ongoing footpath closures will be required to remove the HV gantry and to carry out public realm works in this area.

### Melbourne Central Station



**7am to 6pm, Monday to Fridays**

- Construction and fit-out of the underground passenger connection between the new State Library Station and Melbourne Central Station
- Works include service relocations and fit-out works around the escalators, including steelworks, cladding, tiling and finishes.

---

## Little La Trobe Street site

7am to 3am, Monday to Friday  
7am to 6pm, Saturdays



Works continue to build the above ground structures that will provide critical cooling towers required for final power energisation and station operation.

To support these critical works, a long-term closure of Little La Trobe Street directly adjacent to the work sites is now in place. Motorist access into Little La Trobe Street and Literature Lane is maintained via Elizabeth Street (see map).

During non-Metro Tunnel works under a northbound lane closure on Elizabeth Street, motorist access to Little La Trobe Street will be from a southbound direction only.

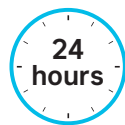
Key activities taking place during this closure include:

- Aboveground structure works involving the use of trucks, cranes, elevated work platforms, rattle guns and hand tools, and other tools and equipment required for the delivery and installation of roof steel and sheeting, cladding and glazing for building façades and installation of acoustic and external louvres
- Use of a mobile crane on the road within the road closure
- Deliveries to the La Trobe Street site involving the use of trucks and a forklift on Little La Trobe Street will increase in August
- Pedestrian stop and hold arrangements will be in place during deliveries to the La Trobe Street site gate which is accessed from the Little La Trobe Street southern footpath. Please allow extra travel time
- Scaffolding has been installed on Literature Lane adjacent to the work site to facilitate access the above ground structures.

---

## A'Beckett Street site

24-hours, Monday to Sundays, ongoing



**Piling works with intermittent road closures of Stewart Street**

7am to 6pm Monday to Saturday, from early-August

Works continue on the construction and fit-out of the lower station passenger areas and operational rooms including steel and concrete deliveries, unloading of materials within the A'Beckett Street acoustic shed, use of a mobile crane, trucks and hand tools

- Piling works are required at the western end of A'Beckett Street shed and involve the use of a crane on the road under a closure of Stewart Street
- During these closures, access to A'Beckett Tower will be maintained via A'Beckett Street only, and access to Stewart Street will be maintained via Franklin Street only (see map)
- The road closure will only be in place during work hours
- Concrete pours at this site are ongoing.

---

## Franklin Street sites

24-hours, Monday to Sunday, ongoing



**Franklin Street westbound road closure**  
24-hours, ongoing

**Franklin Street West southern footpath closure between Swanston and Stewart streets**

24-hours, Monday to Sunday, from early-August for up to 12 weeks

**Franklin Street East southern footpath closure between Victoria and Bowen streets**

7am to 6pm, Monday to Saturday, as required

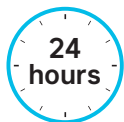
Works continue to build a station entrance on Franklin Street, and construct and fit-out the station passenger areas and operational rooms, as well as aboveground ancillary structures.

- These works include steel tying, waterproofing and concreting to construct slabs and walls, as well as fit-out, mechanical, electrical and plant works
- Delivery of steel and concrete using trucks and unloading materials is ongoing. Truck access to the Franklin Street East site is from Victoria and Swanston streets. Stop and hold arrangements are in place
- Capping beam removal works at the Franklin Street East site are continuing at the Franklin Street East site. Access to Melbourne City Baths, RMIT buildings and businesses will be maintained
- Hoarding removal works and public realm works will take place under intermittent footpath closures adjacent to the Franklin Street East site between Victoria and Bowen streets (see map)
- Capping beam removal works are continuing at the Franklin Street West site. From early-August, the Franklin Street southern footpath will be closed between Swanston and Stewart streets (see map)
- During some capping beam removal works involving the use of a crane, Swanston Street western footpath, adjacent to the site will also need to be closed (see map)
- Following the capping beam removal on the southern side of the site, the southern footpath will remain closed to facilitate surface and utilities works required in this location
- Aboveground structure works and works to remove a capping beam underneath the road surface will take place within the existing Franklin Street westbound road closure
- Reinstatement and public realm works are scheduled to commence at Franklin Street, adjacent to the site in September. These works will require the closure of the Franklin Street northern footpath between Swanston and Stewart streets. Local access to business and residential buildings will be maintained. More information will be provided ahead of works commencing.

---

## Reinstatement and public realm works

**Swanston Street eastern footpath closure between Franklin and Victoria streets**  
24-hours, Monday to Sunday, ongoing



**Victoria Street between Russell and Swanston streets**  
24-hours, Monday to Sunday, ongoing

**Franklin Street between Elizabeth and Stewart streets**  
24-hours, Monday to Sunday, from mid-August

Throughout the State Library Station precinct, staged reinstatement and public realm works are ongoing until late 2024.

- Public realm works to extend the kerb are ongoing outside of Melbourne City Baths under a partial closure of the Swanston Street eastern footpath
- Stage 1a is ongoing, and includes a closure of the northern section of the Swanston Street eastern footpath between Franklin and Victoria streets
- Stage 1b, will be in place from mid-August and includes a closure of the southern section of the Swanston Street eastern footpath between Franklin and Victoria streets (see map)
- A pedestrian detour across to the western side of Swanston Street is currently in place
- Intermittent overnight closures of the northbound bike lane are also required during these works (see map)
- Access to Melbourne City Baths and businesses will be maintained at all times
- Deep sewer works are required at the Franklin Street East site near Bowen Street. Partial footpath closures will be in place around the works location. Local access to business and residential buildings will be maintained (see map)
- Public realm works have commenced on Victoria Street between Russell and Swanston streets to remove existing asphalt pavement, install bluestone pavers, realign the kerb and connect services
- Overnight closures of the Victoria Street southern footpath will be required, with a pedestrian detour to the northern side of Victoria Street in place (see map)
- Public realm works will commence at Franklin Street between Elizabeth and Stewart streets from mid-August (see map)
- These works will be carried out in stages and involve removing sections of existing traffic lanes and kerb, traffic islands, vehicle and motorcycle parking bays, installing new infrastructure, stormwater drainage, bollards, asphalt and line marking
- More information about these works will be available ahead of the works commencing.

---

## Groundwater monitoring

**Victoria, Franklin, Swanston and Therry streets**

Monday to Fridays, 7pm to 5am  
under lane closure (as required)



- Intermittent testing of previously installed groundwater wells on Victoria, Franklin, Swanston and Therry streets on the road and footpath is ongoing
- This involves setting up small, localised traffic controls on footpaths and overnight lane closures with traffic management in place
- These works will generate low levels of noise.

---

## Oversize deliveries

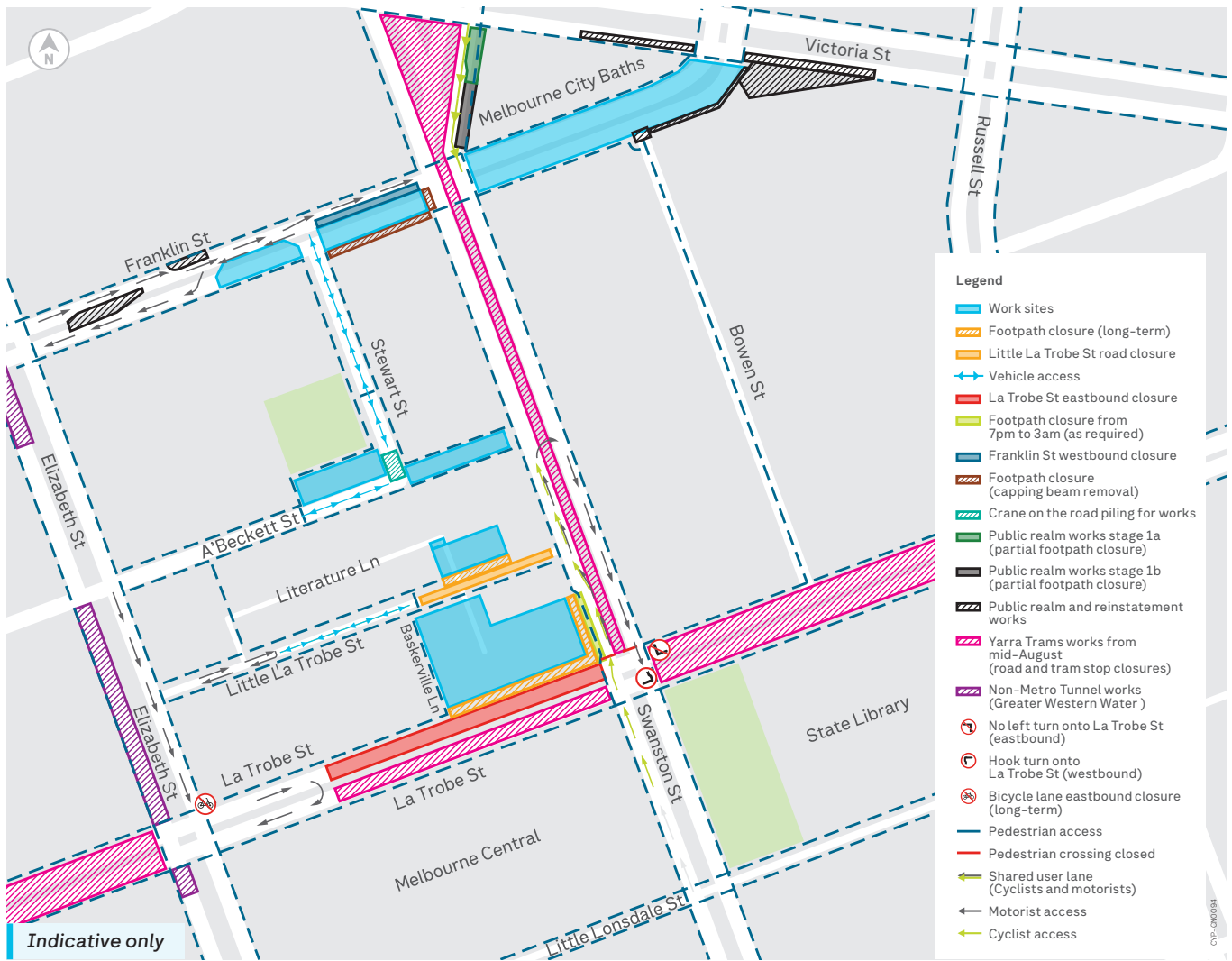
**All sites**

10pm to 7am, ongoing



- In addition to regular deliveries to site, out of hours deliveries will occur intermittently to minimise traffic disruption and to ensure the safety of the public and our workers.

# Works area map



## Business support

While the new State Library Station will be a significant boost for the local area, construction activities can impact local businesses. In response to this, our Business Support Team assists businesses through the disruption and any permanent changes that will take place.

Please see the promotion in this notification for **Mamos Greek Street Food**, located at **395a Swanston Street**. We look forward to promoting more local businesses as the project progresses.

Find out more

[metrotunnel.vic.gov.au](http://metrotunnel.vic.gov.au)

1800 105 105 (call anytime)



For languages other than English please call (03) 9209 0147



Please contact us if you would like this information in an accessible format. If you need assistance due to a hearing or speech impairment, visit [relayservice.gov.au](http://relayservice.gov.au)





# Tram works in August and September

## La Trobe Street tram stop upgrades

The Department of Transport and Planning and Yarra Trams are upgrading 12 tram stops at six locations along La Trobe Street, to improve accessibility and passenger experience.

The second and final stage of the La Trobe Street tram stop upgrade project includes upgrades to stops at Elizabeth, Swanston and Exhibition streets and will take place from 16 to 30 August (24-hour works).

## Swanston Street overhead works

Yarra Trams are upgrading overhead wiring on Swanston Street, between La Trobe and Little La Trobe streets, as part of Metro Tunnel Project works.

- Early works have commenced and will continue until 16 August (midnight to 5am)
- Major works will take place from 26 to 29 August (6am to 7pm)
- During major works, Swanston Street north of La Trobe Street will be closed to vehicles, and pedestrians will need to detour around the work zone during work hours
- From 26 August to mid-September, tram services will not be operating between Stop 8 (Melbourne Central) and Stop 4 (Queensberry Street). Passengers will need to walk between stops to continue their journey.

## Swanston and Victoria streets precinct upgrade

Yarra Trams is working with the Department of Transport and Planning (DTP) and City of Melbourne to upgrade the Swanston and Victoria streets precinct by creating open public space and improving safety and operations.

- Early works have commenced and will continue until 30 August (9pm to 5am)
- Major works will take place from 30 August to 16 September (24-hour works).

## More information

There will be changes to how motorists, cyclists and tram passengers travel during these works. Some works will create high levels of noise.

Alternative access arrangements will be in place for businesses along Swanston Street, north of La Trobe, to receive deliveries from 16 to 30 August. These arrangements will be communicated to businesses directly.

For more information about these works, visit [yarratrams.vic.gov.au/projects](http://yarratrams.vic.gov.au/projects) or contact Yarra Trams on **1800 800 007**.

For tram service changes, visit [yarratrams.com.au/service-changes](http://yarratrams.com.au/service-changes)



Concept image - The upgraded stop at La Trobe and Swanston streets, to be completed in August



# \$5

## GYROS SOUVLAKI

5pm - 7pm



Mamos Greek Street Food (Swanston 395)



[mamos.greekstreetfood](https://www.instagram.com/mamos.greekstreetfood)



Mamos Greek Street Food



0411 107 844



[mamos.com.au](https://www.mamos.com.au)



395a Swanston St, Melbourne VIC 3000



\*Offer expires 16.08.2024\*

**M-A-M-O-S**

GREEK STREET FOOD