



# Community Liaison Group Meeting

20 March 2025

In partnership with



# Agenda

Time	#	Item detail	Owner
5.30 pm	1	Welcome, introductions and apologies	Chair (Kim Jordan)
5.40 pm	2	Community engagement update	CPBJH JV
5.50 pm	3	Construction update	CPBJH JV
6.10 pm	4	WGTP MRPV update	WGTP MRPV
6.30 pm	5	WGTP's user education tools	Transurban/Spatial Media
6.40 pm	6	Environmental update	All
6.50 pm	7	BREAK	All
7.00 pm	8	Member questions	CLG members
7.30 pm	9	Thank you and close	Chair (Kim Jordan)



# Community Engagement Update



# Community Engagement

Matter	Response/mitigation
Traffic along Benbow Street, Spotswood	VMS was put in place short term until the permanent no right turn sign was installed
West Gate Freeway detour options	Sent reminder emails to light and heavy vehicle users regarding detours Implemented additional signage
Dust along Footscray Road path	Regular clean and sweep undertaken and ongoing in line with maintenance requirements
Maintenance along Donald McLean fence line	Site maintenance crews undertook work to remove and clean up across the area
Worker parking	To date, the JV has undertaken the following: <ul style="list-style-type: none"> <li>Relocated around 40% of the workforce which pre-start at the Youell Street compound from to another site area in the west of the project area</li> <li>Continuing education regarding project parking</li> </ul>
Pearl River Road southbound reopening	Engagement with Docklands stakeholders and Bicycle Network on reopening
Harris Street	<ul style="list-style-type: none"> <li>The JV advised business and sporting organisation stakeholders of the postponement of the Harris Street finishing works in mid-February.</li> <li>JV to meet with stakeholders once commencement dates for the works are confirmed and approved.</li> </ul>
Honorary Naming program	Engaging with public on the two tunnels and key stakeholders on the wider naming program



# Construction Update





# Summer works campaign





# Tunnels





# Veloway





# Footscray Road





# Wurundjeri Way





# Bridge cladding





# Graffiti removal update

## February 2025

- **Early February: Hyde Street ramp acrylic panels removal**

## March 2025

- **Mid-March: Williamstown Road inbound exit ramp noise wall removal**



# WGTP MRPV Update





## Latest news





# Formula 1

OFFICIAL



OFFICIAL



# Phases of completion



## Preparation

- Preparation work has been done to identify what areas of engagement are required to build awareness of the benefits and scope of the project.



## Education

- Educating the community and key stakeholders about how to use the West Gate Tunnel and the new assets.
- Extend reach into communities and build relationships with stakeholders.



## Celebration

- In the lead up to the West Gate Tunnel Project opening, there will be opportunities to celebrate the opening of some areas of the project and to thank community members.



# Education: building knowledge from the ground up

- Narrative shifts to how to focus on how to use the West Gate Tunnel – education campaign kicks in
- Build or re-establish relationships with stakeholders to create partnerships and advocates
- Extend reach into communities



## Key initiatives



**Online journey  
planning portal,  
*Drive the West Gate Tunnel***



**Outreach and activations  
in Metro Melbourne and  
Regional Victoria**



**Media, stakeholder,  
community site and  
project tours**



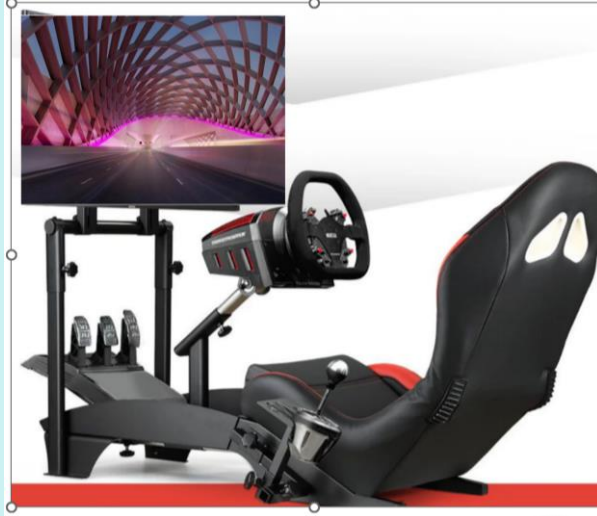
**Existing advertising campaign  
morphed to support education**



**Communication and industry  
education on truck bans**



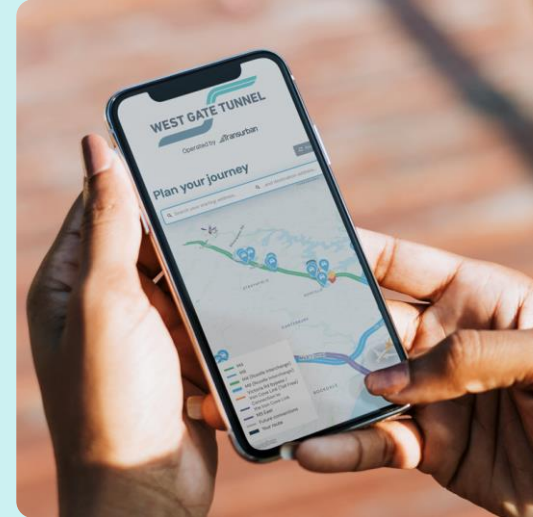
# More ways to learn about West Gate Tunnel



## 3D model and driving simulator

Use virtual reality to drive the West Gate Tunnel before you use it in real life

Experience it at the project Info Centre in Yarraville or at activations, pop-ups, major event partnerships



## Online West Gate Tunnel portal

- Online portal that shows you how to get from your origin to your destination when the West Gate Tunnel is open – using the tunnel or the surrounding road network
- Will be housed on the Big Build, Transurban and Department of Transport and Planning websites



## User guides and videos

- What will change
- What stays the same
- Planning journeys
- Tolls – how much and where
- Printed and electronic documents

## General information for non freight users

- Letter box drops:
- Saying thank you
- inviting to community celebration events
- Links to resources about the project

- Advocates sharing information



# Streams

**Freight**

**Community**

**Web &  
Digital**

**Active  
Transport**

**Tolling**

**CALD**

**User  
Education**



**Community**



# Recent Community Events



*Pako Festival, Saturday 22 February*



*Antipodes Festival, Saturday 22 & Sunday 23 February*



*Wyndham Multicultural Lunar Festival, Sunday 9 February*



*Vietnamese Festival, Saturday 15 & Sunday 16 February*

# Upcoming activations

- Yarraville Festival, Anderson Street Yarraville - Sunday 23 March
- Victorian Transport Association Annual Conference, 24 & 25 March
- Avalon Australia International Airshow, Tuesday 25 March - Sunday 30 March
- Australian Islamic Centre Pop Up, 23-27 Blenheim Rd, Newport - Saturday 12 April
- Shopping centre activations May – September
  - Regional locations of Bendigo, Ballarat and Geelong
  - Metro locations including Altona, Werribee, Tarneit and Caroline Springs
- Open House Melbourne, 26 – 27 July



# Avalon Airshow



# **Web & Digital**

**Changes to the WGTP website**



Menu

VICTORIA'S

BIG

BUILD

Home

>

Using the West Gate Tunnel

>

Home

WEST GATE TUNNEL

HOME

FOR DRIVERS

FOR CYCLISTS

PARKS AND MORE

EVENTS

SUBSCRIBE

Using the West Gate Tunnel

Explore your travel options

FOR DRIVERS

FOR CYCLISTS

PARKS AND MORE

Transforming Melbourne's west

# Active Transport



# Preparation for cyclist engagement is underway

- We will be engaging with:
  - Walking and cycling groups and bodies, path users (runners, walkers, riders), businesses, institutions, community interest groups and active transport apps
- We will be talking about:
  - New journeys that have been created,
  - New infrastructure that connects with the existing cycling network and
  - How to get to key points of interest (the city, schools, hospitals, venues)
- We are exploring opportunities to enhance the cyclist experience across the project through things such as:
  - Self guided tours
  - Wayfinding decals
  - Education based signage



*Totem signs to be refreshed*

# User education tools





## Driver Simulator Experience



# Driver Simulator

- Taking the interactive model to a new level of immersion and engagement
- Life-like experience in the driver seat, wheels, pedals and visual immersion of the new road environment
- Steering, speed, brakes and route selection all controlled by the driver
- Educating users on signage, speed limits, new route options, new road network as per design



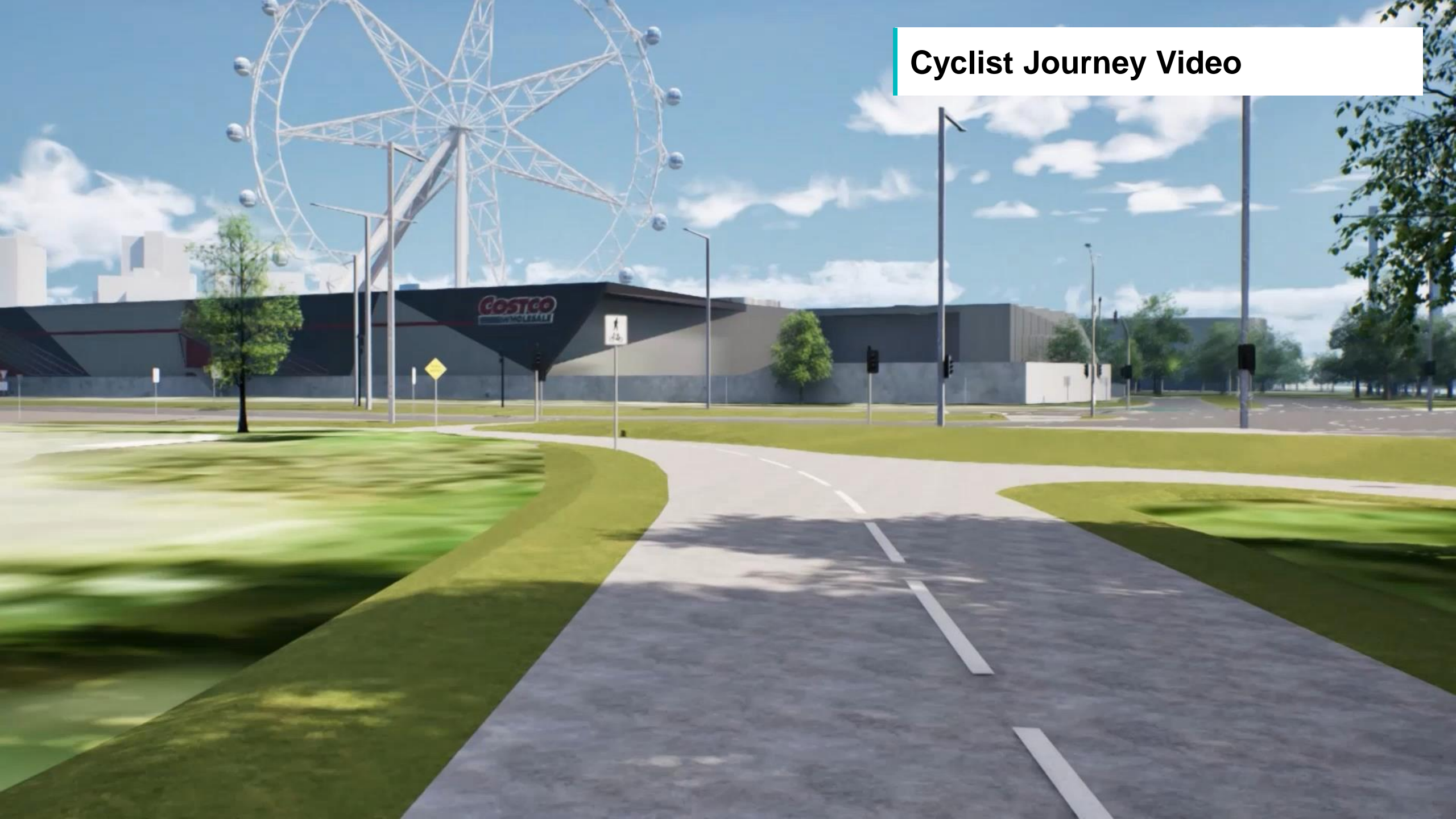
*Driver Simulator Rig set up with people engaging with the technology*



## Driver Journey Video



## Cyclist Journey Video





# Journey Planner Tool

- Web-accessible tool for any device
- Search via the address bar or click anywhere on the map for start and end points
- User can select car, heavy vehicle or cyclist mode for tailored journey option
- Displays journey video according to your chosen journey
- Map visually depicts vehicle/bicycle moving along the journey as the video is playing

## Plan your journey

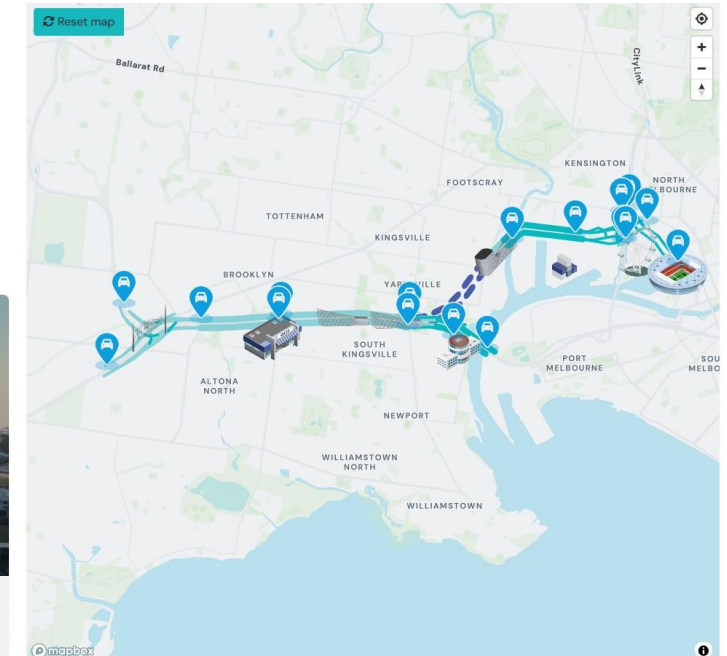
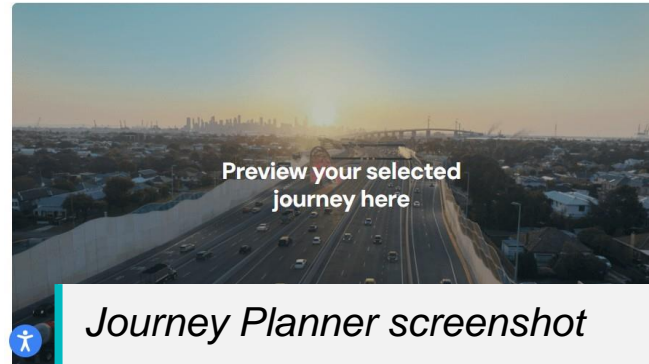
Explore your route options

Vehicle type

Cars / light Heavy Cyclists

Choose starting point or click the map...

Choose destination...

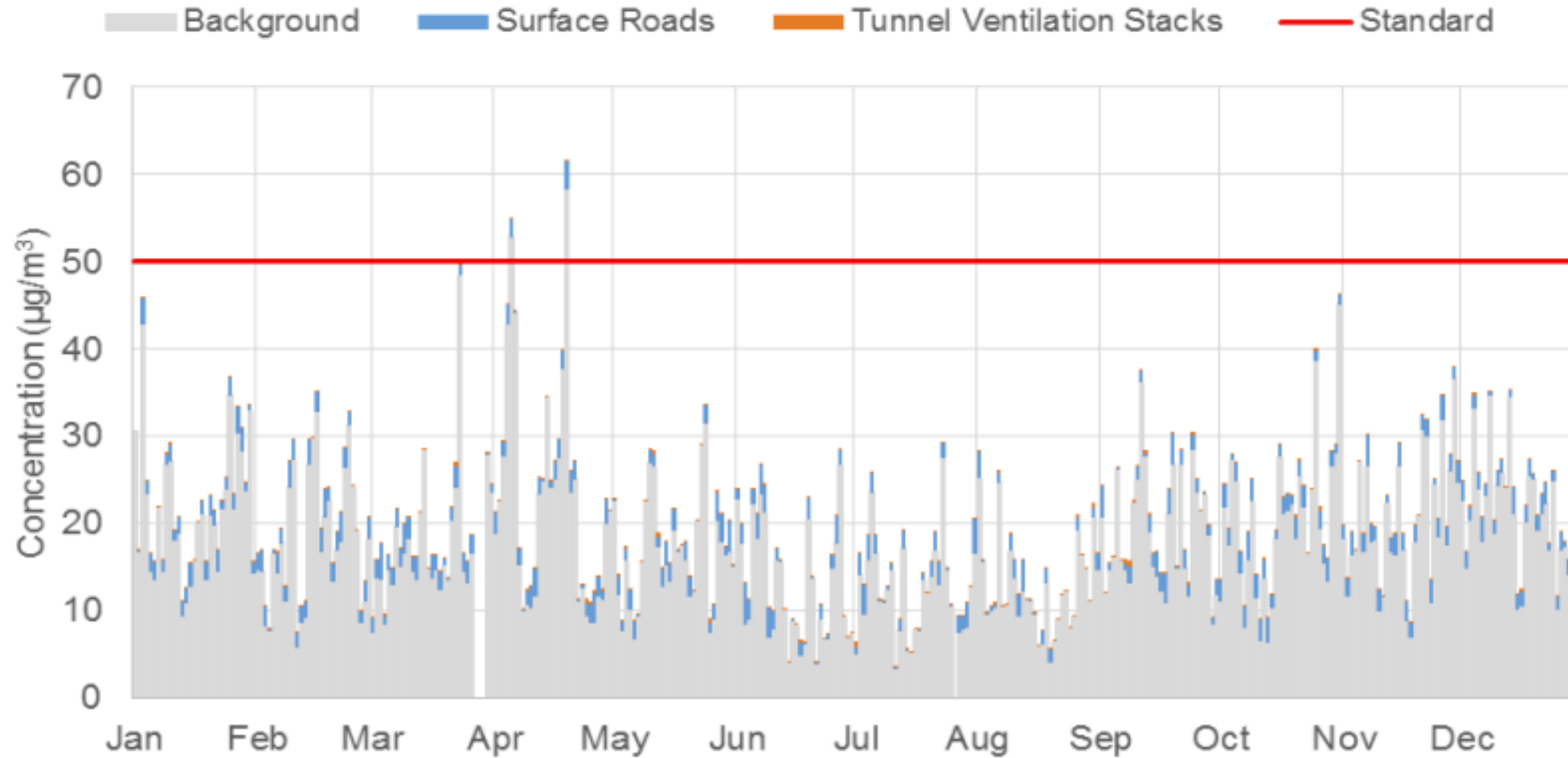


Proven success and widely used concept with WestConnex road network opening in NSW

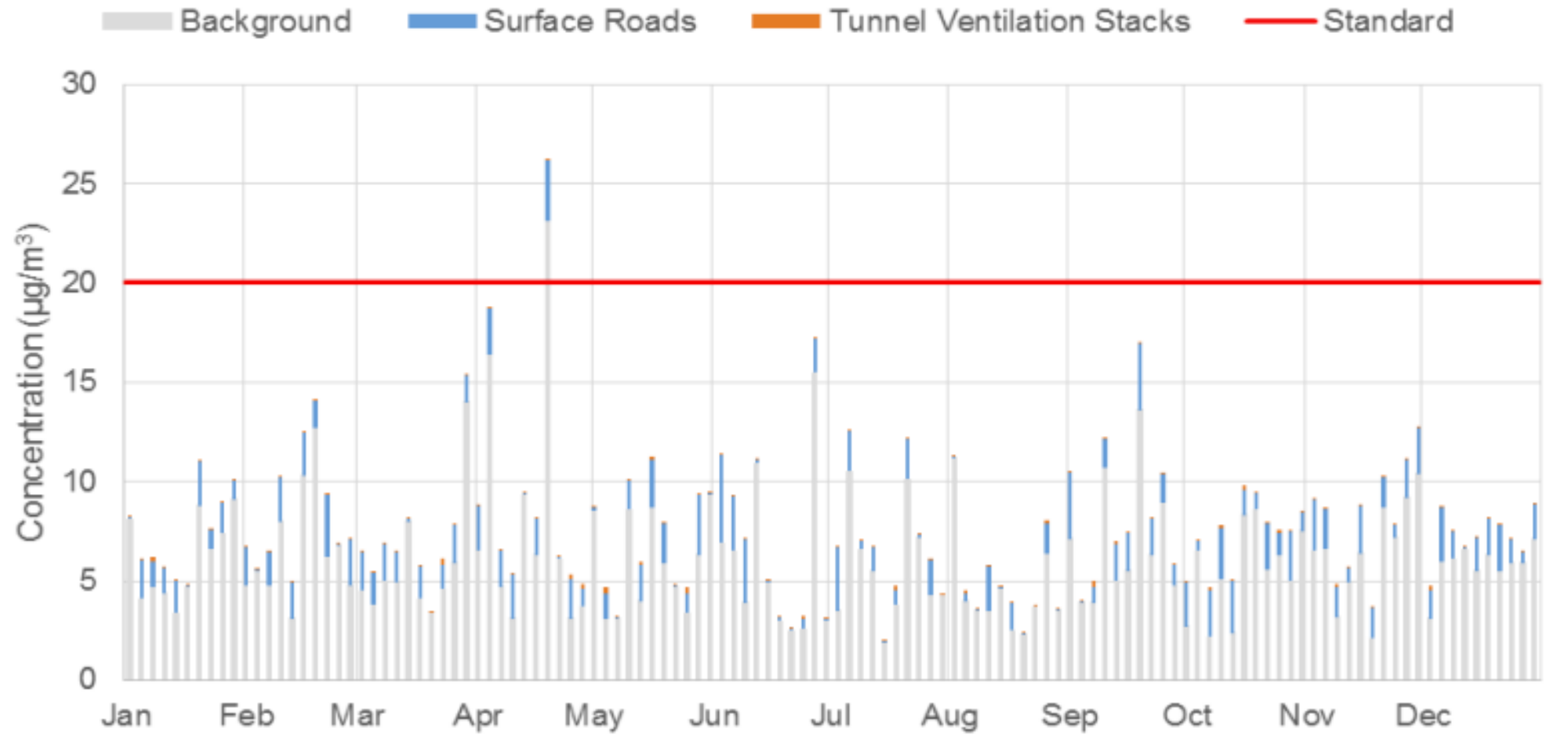
# Air Quality & Tunnel Ventilation



## Air EES predicted PM<sub>10</sub> concentrations 2031 (worst receptor)



## EES predicted PM<sub>2.5</sub> concentrations 2031 (worst receptor)





# Tunnel ventilation system

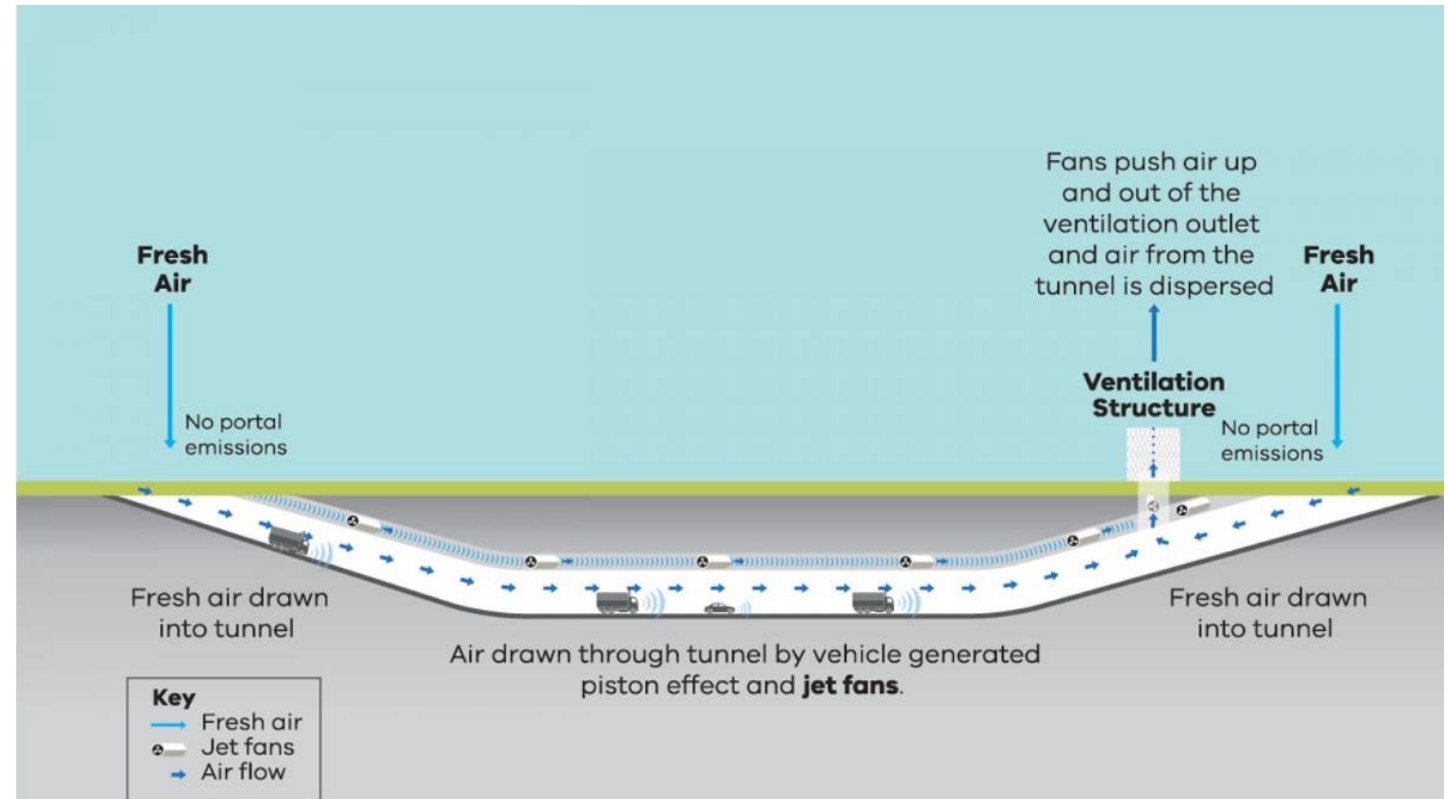
Designed to maintain safe air quality both inside and outside the tunnel to meet stringent air quality standards. Monitoring will be publicly reported.

## Key features:

- Two 50m structures
- 72 jet fans in total across both structures
- 33 air quality monitors in total across both structures

## How it works:

- Draws in fresh air from tunnel entry.
- Pushed through the tunnel by the movement of vehicles and jet fans.
- Before the tunnel exit, air is pushed up and out of the tunnel through a ventilation structure and into the atmosphere where it mixes with fresh air.
- There are no emissions from the tunnel portals where vehicles enter and exit.





# Break – 10 minutes

In partnership with

 Transurban





# Member questions





# Thank you and close

Next meeting: 1 May 2025

In partnership with

 Transurban

