



Artist's impression of Grimshaw Street Interchange with Trist Street Reserve and AK Lines Reserve (view facing south)

Works starting on a bigger, better Grimshaw Street

Fact sheet
June 2025

BIG BUILD M80 RING ROAD

We're getting ready to build the new Grimshaw Street Interchange in Watsonia, with express lanes to the North East Link tunnels and less congestion for locals.

The new, wider interchange delivers new lanes and more green light time for local trips, while North East Link traffic passes below. Drivers using North East Link will travel on new express lanes, cutting travel times, skipping traffic lights and keeping local roads for local trips.

The new Grimshaw Street Interchange will feature a bus priority lane in each direction on Grimshaw Street, creating more efficient and reliable public transport journeys.

Two new walking and cycling underpasses at Grimshaw Street will deliver better-connected and safer north-south trips. Another new walking and cycling underpass at Kempston Street will improve east-west connectivity and provide more options for accessing the Watsonia Road precinct.

Works in the area will increase significantly from mid-2025 as we get ready to build the new and improved interchange.

For the latest updates on what's happening at Grimshaw Street, visit bigbuild.vic.gov.au/roads/grimshaw or scan:



Building the new Grimshaw Street Interchange

- Jul 2025**
Relocate utility services
- Oct 2025**
Combined road and rail blitz
- Nov-Dec 2025**
Build the road bridge foundations
- 2026-2027**
Build the new, wider road bridge and express lanes
- 2028**
Finishing works on Grimshaw Street

Sign up for updates
bigbuild.vic.gov.au/roads-subscribe

How we're building the new Grimshaw Street Interchange

We'll build the new interchange in stages to minimise disruption and keep traffic moving.

Stage 1: Relocate utility services

Before major works commence, we'll relocate underground utility services. You'll see us excavating water, power, gas and telecommunications services, moving them away from Grimshaw Street and construction areas. To do this, we'll excavate along the new services routes before installing the new pipes and conduits. The new connections are then tested and connected with the surrounding network.

We're coordinating with utility service providers to minimise planned service interruptions. However, these may be required at times with advance notice provided to affected properties.

Stage 2: Combined road and rail blitz

We're widening the Grimshaw Street and Greensborough Bypass intersection to make space for the express lanes to the North East Link tunnels. To build the new, wider interchange we need to rebuild the road bridge over the Hurstbridge line. For the safety of our workers, and to access critical works areas, we'll complete these works while buses replace trains on sections of the Hurstbridge line.

In October 2025, we'll work on both the rail line and the road above at the same time, in a major construction blitz. We'll build the eastern foundations for the Grimshaw Street road bridge, a new walking and cycling underpass and new gantries over the road.

To complete this stage and future stages, we'll change how the road looks and operates, and you'll see adjusted kerbs, traffic lights, and road markings.

Stage 3: Build the road bridge foundations

Across November and December 2025, we'll build the western foundations for the new Grimshaw Street road bridge.

We'll also build the new walking and cycling underpass between AK Lines and Trist Street reserves. The new underpass will create safer journeys for pedestrians and cyclists by directing them under Grimshaw Street, separated from cars, trucks and motorcycles.

We'll excavate the area and install pre-cast concrete culverts and retaining walls, before rebuilding the road on top.

Changes to your travel times

To safely deliver these critical works, there'll be major long-term changes to the way traffic and pedestrians move around the area.

Throughout stages 2 and 3, there will be closures at the intersection of Grimshaw Street and Greensborough Bypass for extended periods of time with detours in place.

Between October and December this year, there'll be travel time impacts while we conduct the road and rail blitz on Grimshaw Street and the Hurstbridge line.

Detours will be in place while we work, and we'll share more details with the community closer to the date to help you prepare for these changes.

Please allow extra time for your journey and plan ahead.

For the latest updates on what's happening at Grimshaw Street, visit bigbuild.vic.gov.au/roads/grimshaw or scan:



Artist's impression of the new Grimshaw Street road bridge

Stage 4: Build the new, wider road bridge and express lanes

You've seen us building the entry and exit ramps for the new interchange on Greensborough Bypass, between Kempston Street and Watsonia Road.

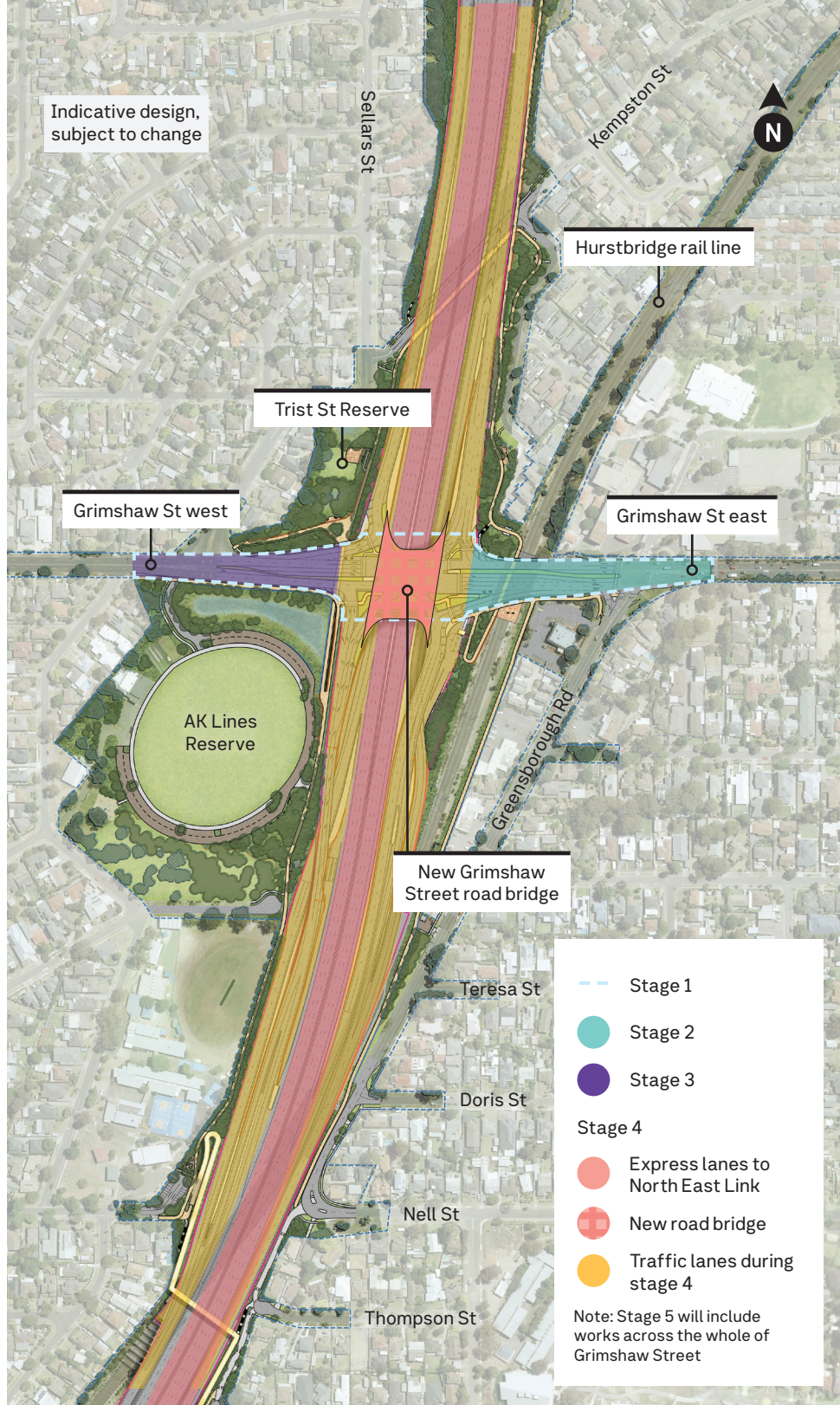
In 2026, we'll move traffic onto these ramps so we can build the new, wider Grimshaw Street bridge and the Kempston Street underpass. We'll then excavate under the new bridge to build the express lanes to North East Link.

While we build the new Grimshaw Street bridge, there'll be long-term changes to the way you move through the area. We'll keep traffic moving with temporary traffic arrangements that allow us to access the different work areas for each stage. Access will be maintained across Greensborough Bypass, with detours and traffic management in place as needed. We'll share more details with the community in advance to help you prepare for these changes.

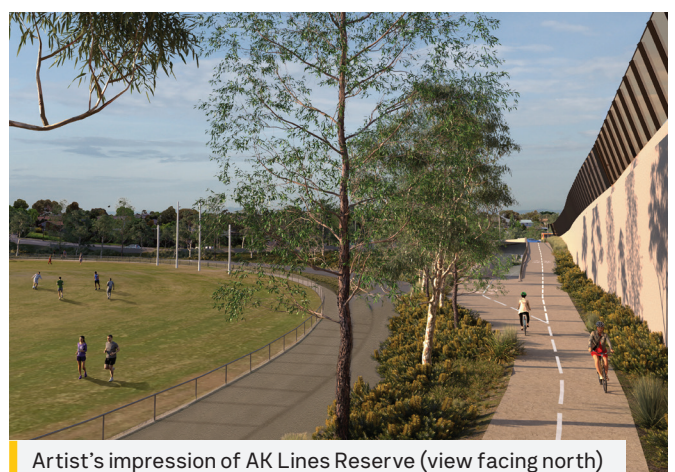
Stage 5: Finishing works on Grimshaw Street

In 2028, the new express lanes under Grimshaw Street will be open to traffic.

You'll see us completing finishing works on Grimshaw Street, including landscaping, median islands and installing a traffic management system for the interchange.



Artist's impression of returned Trist Street Reserve after construction



Artist's impression of AK Lines Reserve (view facing north)

Speak with the team

Our community Hub at Watsonia is a one-stop shop for project information and enquiries.

Watsonia Hub
17 Watsonia Road, Watsonia
Open 10am-5pm, weekdays

Visit anytime or contact our project team to make an appointment.

For the latest updates on what's happening at Grimshaw Street, visit bigbuild.vic.gov.au/roads/grimshaw or scan:



School and PTV buses

PTV routes 566 and 902 will be detoured at times while works take place on Grimshaw Street. Some bus stops will also be temporarily relocated during works. We'll continue to work with PTV to manage these arrangements and will share information on any impacts ahead of time.

We'll also work directly with schools and school bus operators to manage any changes to school bus routes.



We'll work with PTV and schools to manage any impacts to bus routes.



Support your local traders during construction

Shop local

The community will still be able to shop local and support businesses during construction.

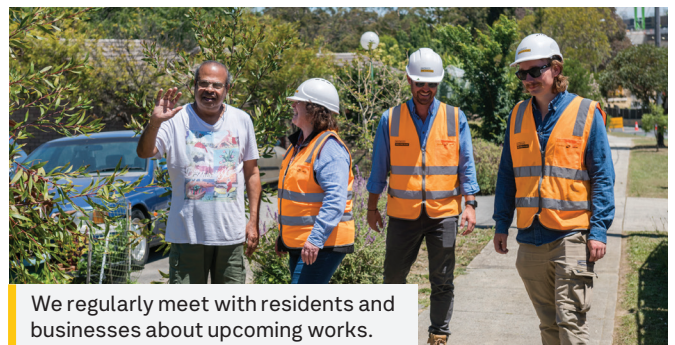
We're working with traders across Greensborough and Watsonia on how to best support them and keep customers coming through the doors.

To see all that your local traders have to offer, visit bigbuild.vic.gov.au/m80-traders.

Managing construction impacts

Our works are carefully planned and managed to make sure residents can continue to enjoy where they live and local businesses can continue to operate.

We have strict strategies in place to manage potential construction impacts. If you feel you are experiencing excessive impacts from construction, we encourage you to contact the project team on **1800 105 105** as soon as possible.



We regularly meet with residents and businesses about upcoming works.

bigbuild.vic.gov.au/roads

contact@bigbuild.vic.gov.au



1800 105 105 (call anytime)



For languages other than English please call 9209 0147

Please contact us if you would like this information in an accessible format.

If you need assistance due to a hearing or speech impairment, please visit relayservice.gov.au