



# Community Liaison Group Meeting

24 July 2025

In partnership with



# Agenda

Time	#	Item detail	Owner
5.30pm	1	Welcome, introductions and apologies	Chair (Kim Jordan)
5.40pm	2	Community engagement update	CPBJH JV
5.50pm	3	Construction update	CPBJH JV
6.10pm	4	Preparing for road opening: <ul style="list-style-type: none"> <li>No-truck zone update (Department of Transport and Planning)</li> </ul>	Andrew Newman, Jess Murdoch
6.30pm	5	BREAK	All
6.45pm	6	Preparing for road opening: <ul style="list-style-type: none"> <li>Metropolitan shopping centre activations (MRPV WGTP)</li> <li>Awareness building initiatives (MRPV WGTP)</li> </ul>	Douglas Morris
7.05pm	7	Member questions	CLG members
7.30pm	8	Meeting closed	All



# Community Engagement Update



# Community Engagement

Item	Outcome
West Gate Freeway outbound winter works from 13 July to end of August	<ul style="list-style-type: none"> <li>• Sent works notification and stakeholder email to residents, businesses, key stakeholders, light and heavy vehicle/freight users advising of works and detours options.</li> <li>• Met with businesses and key emergency service representatives to brief in works, impacts and detours.</li> <li>• Briefed schools and learning centres on detour routes.</li> <li>• Two complaints have been received relating to delays from two different drivers.</li> </ul>
Worker parking – Northern portal	<ul style="list-style-type: none"> <li>• Escalated concerns to site management and reminded workers of parking options during daily site pre-start briefings.</li> <li>• Placed flyers to worker vehicles advising of project-specific parking and facilities at Pivot site.</li> <li>• JV continues to monitor situation.</li> </ul>
Worker parking and noise concerns – Southern outbound portal	<ul style="list-style-type: none"> <li>• Parking: <ul style="list-style-type: none"> <li>• Offending worker vehicle moved immediately. A small area closer to site was repurposed for worker parking. JV installed additional 'no parking' signs.</li> </ul> </li> <li>• Noise: <ul style="list-style-type: none"> <li>• Provided resident with white noise machine, JV continues to monitor situation.</li> </ul> </li> </ul>
Youell Street – informal car park weather impact	<ul style="list-style-type: none"> <li>• JV site team rectified area of damage with gravel.</li> </ul>
Harris Street	<ul style="list-style-type: none"> <li>• The JV advised business and sporting organisation stakeholders of night works during June and July for bridge works.</li> <li>• JV met with impacted business and sent stakeholder email to business and key stakeholders to advise of the implementation of site extension and occupation of 8 car parks to August.</li> </ul>

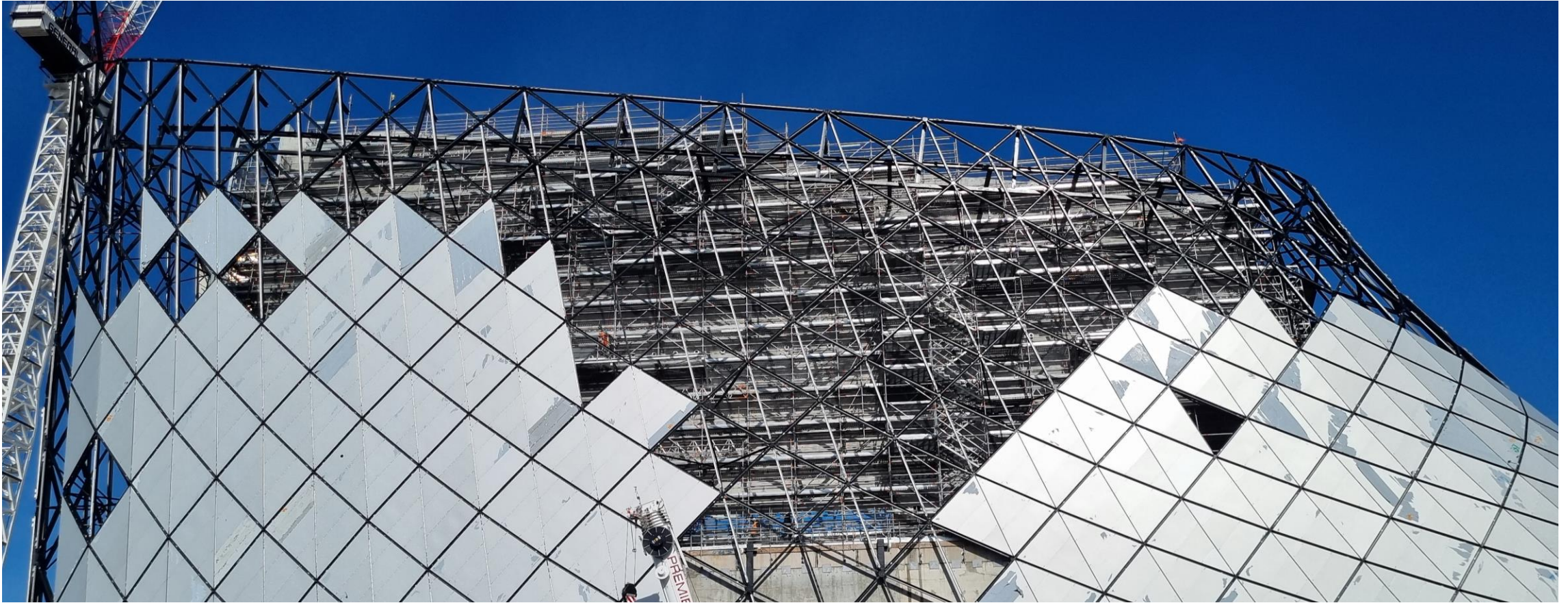


# Construction Update





# West Gate Freeway





# Tunnels





# Northern portal





# Landscaping and open spaces





# Harris Street





# Maribyrnong River bridges





# Veloway







# Preparing for road opening





# Department of Transport & Planning

## No-truck zone update

In partnership with



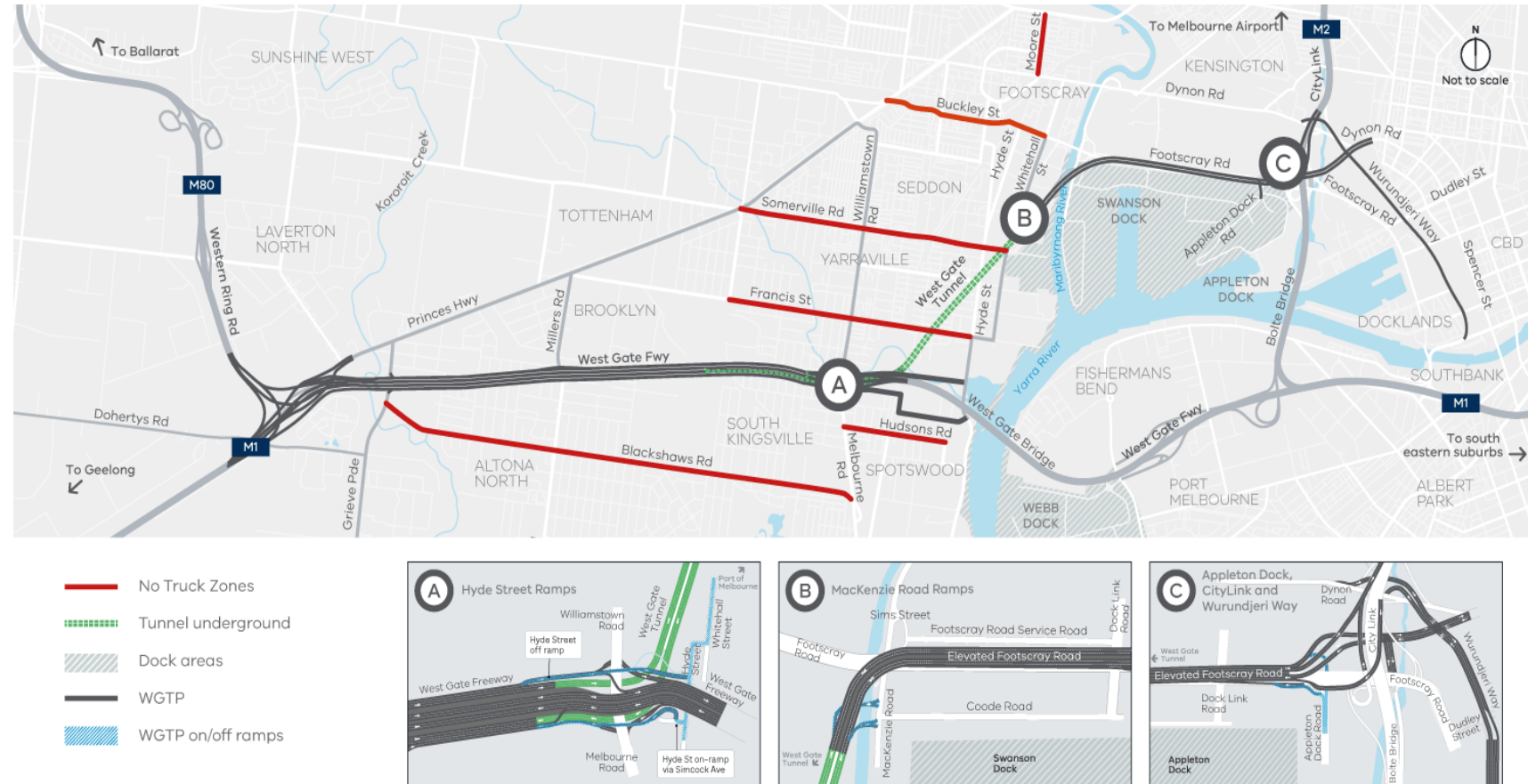






# Implementing the no-truck zones

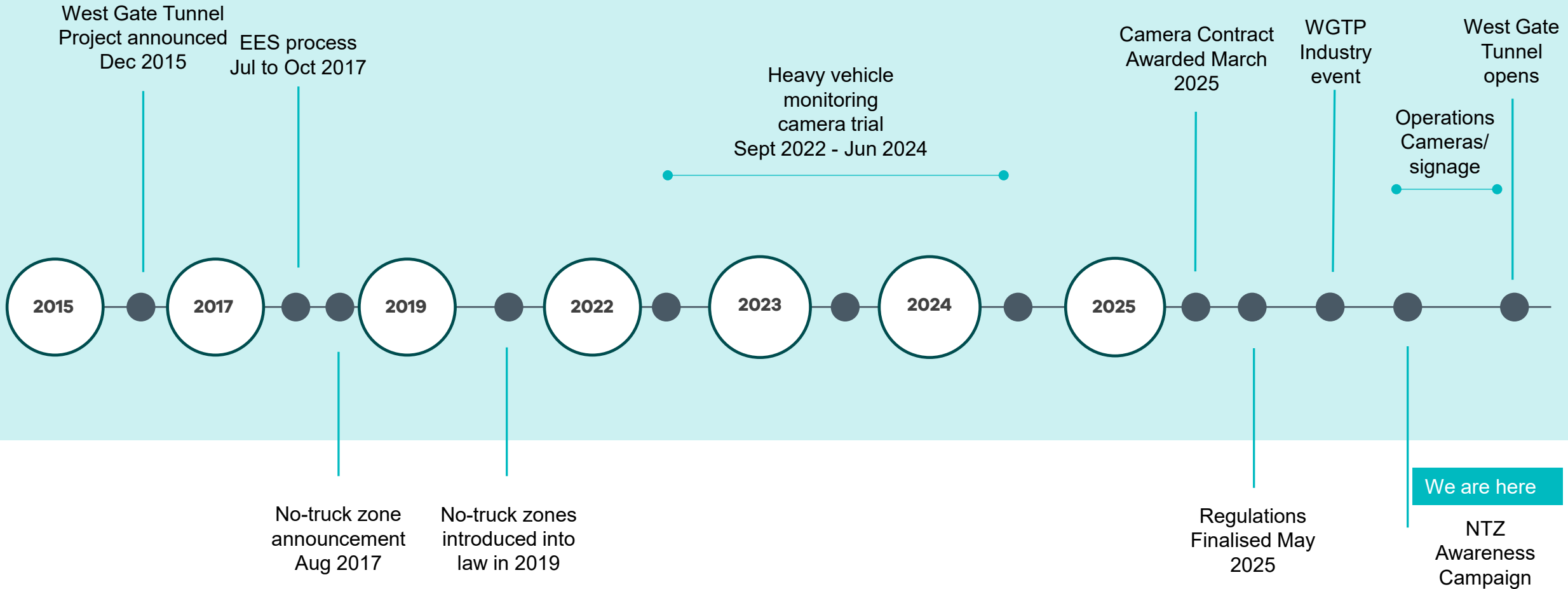
- When the West Gate Tunnel opens in 2025, there will be 24-hour no-truck zones on six streets in the inner west.
- Exemptions will apply to trucks with local origins and destinations in the no-truck zones.
- We will ensure that deliveries and services continue to reach businesses and homes in the zones.



▲ Final no-truck zones, regulations and boundaries map are expected to be confirmed by late 2025



# No-truck zones timeline





# Journey Exemptions

- Exemptions apply for trucks that have an origin or destination **within** the no-truck zone for:
  - Deliveries
  - Performing construction or maintenance
  - Vehicle repairs or sales
  - Accessing a garaged address





# Vehicle type exemptions

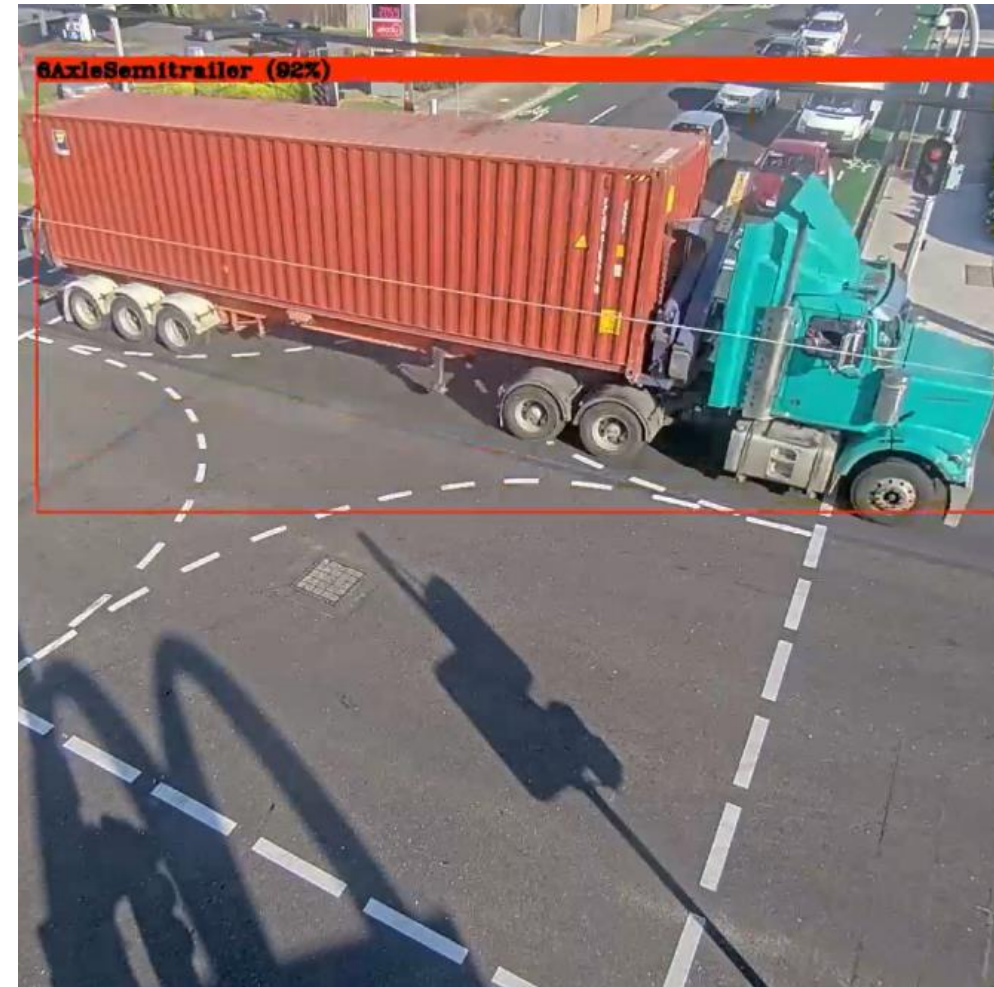
- Our focus is on removing large trucks, from six key roads in the inner west.
- Exemptions include:
  - smaller trucks (two axle) typically performing grocery deliveries, parcel deliveries, construction, furniture removals or landscaping services.
  - Garbage trucks
  - Concrete trucks
  - Tow trucks
  - Emergency vehicles
  - Motor homes





# Roadside detection

- Roadside cameras will detect trucks in no-truck zones to ensure the rules are followed.
- Roadside cameras will help the regulator with enforcement, focusing on drivers who continue to use local roads.
- We'll hold the vehicle's registered owner responsible for any fines if their truck is caught in a no-truck zone.





# Infringements

- While the cameras tell us the vehicle type, they can't tell us the reason for the journey.
- If a vehicle or journey type is lawfully permitted within a no truck zone this will be identified by the NHVR and no further action will be taken.
- Where required, there will be additional opportunities to have this reviewed.



Cleaning service truck



Flatbed delivery truck



# Heavy Vehicle Detection

## Somerville Road and Williamstown Road

May 2024



Department  
of Transport  
and Planning



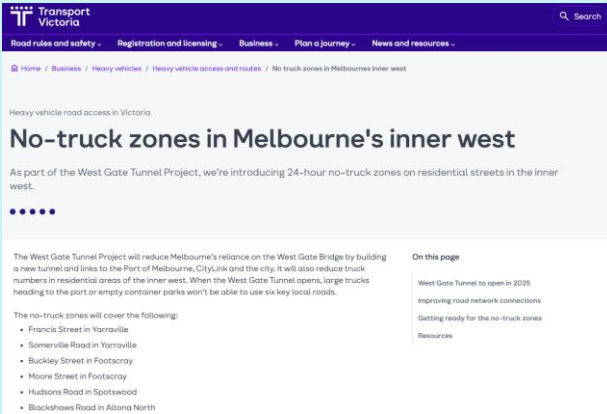
# Heavy vehicle permits

- There will be a small number of oversized over-mass (OSOM) trucks that request a permit, which includes access to a no-truck zone, where they cannot travel on the West Gate Freeway.
- Restricted access vehicles are directed to refer to the National Network Maps on the National Heavy Vehicle Regulator website to check the available network and vehicle approval status.





# How we're communicating no-truck zones



## Communities

- Webpage live
- Fact sheets – online & printed
- Social media ads – Facebook/Instagram
- Community & Council briefings
- Community pop-ups
- Stakeholder packs via Councils
- Postcards letter-box drop and eNews

## Roadside cameras will monitor the large trucks



## Truck Drivers

- Dedicated social media ads
- Focus groups with CALD truck drivers
- Conversations at rest stops / fuel depots
- Toolbox talks/briefings by industry/businesses to drivers
- Pocket maps – alternative routes



## Businesses / industry

- Emails and letters to high-impact businesses (130)
- 1:1 briefings with impacted businesses
- Working with peak bodies and Port of Melbourne
- Industry forums / briefings
- Stakeholder packs to share material via networks





## WGTP MRPV

Metropolitan shopping centre activations  
Awareness building initiatives

In partnership with





# Shopping centre activations





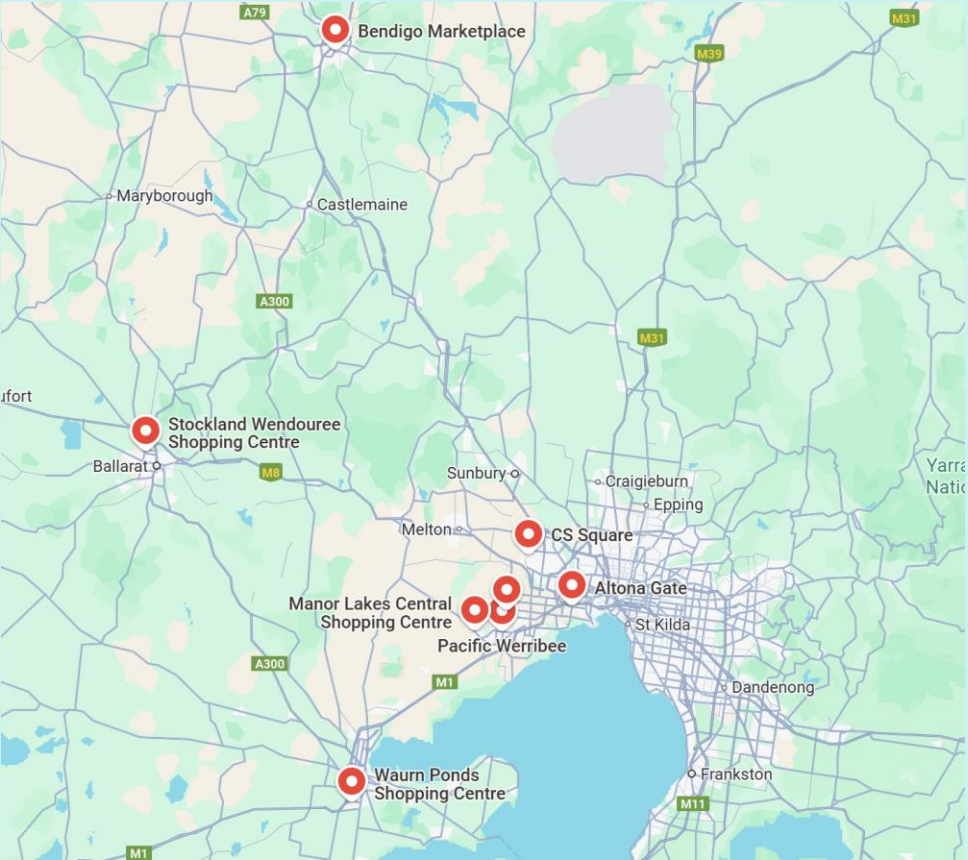
# Shopping centre activations



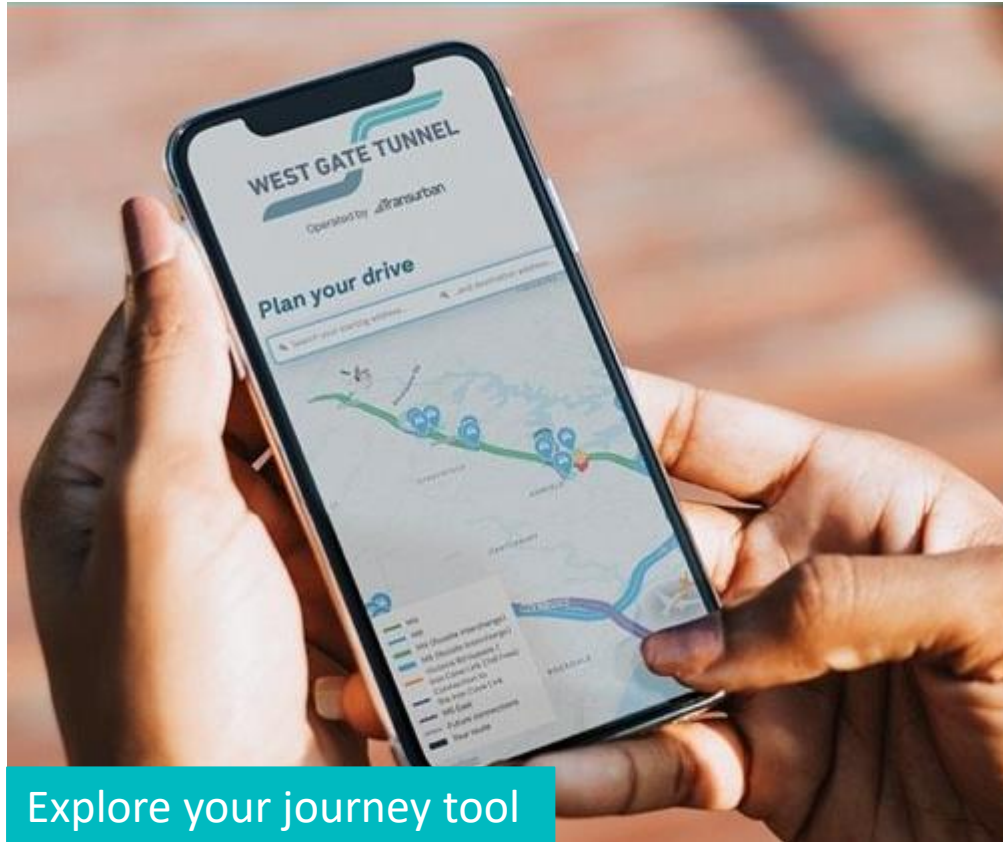


# Metropolitan shopping centre activation locations

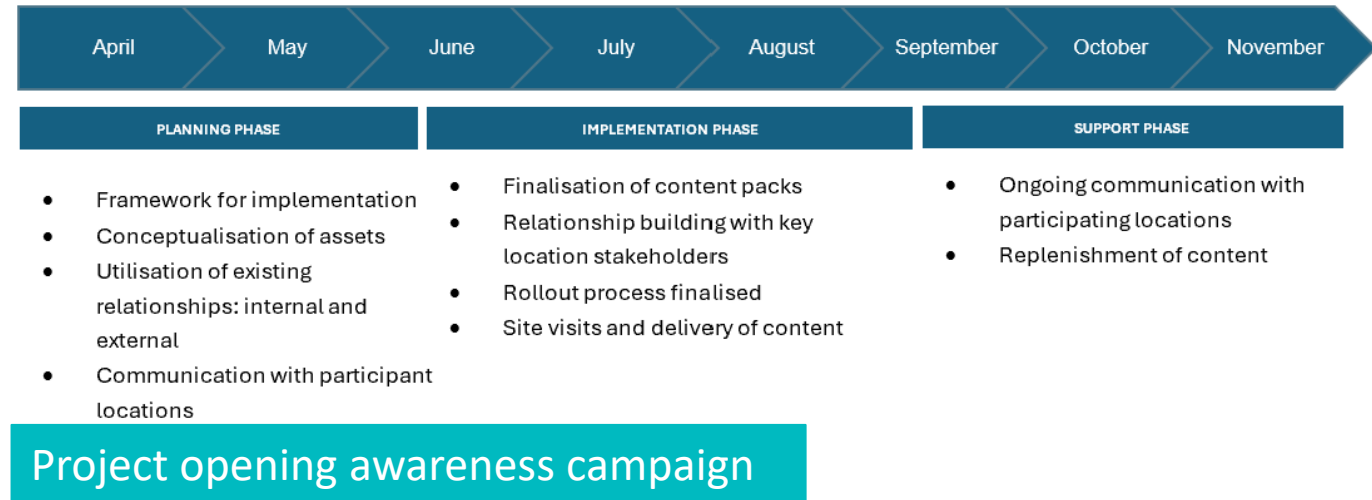
Location	Date
Pacific Werribee	Friday 25 July – Sunday 3 August
Caroline Springs Square	Friday 8 August – Sunday 17 August
Tarneit Central Shopping Centre	Friday 29 August – Sunday 7 September
Altona Gate Shopping Centre	Friday 12 September – Sunday 21 September



# Awareness building initiatives



As part of our outreach completions plan, the rollout of bespoke education material has been identified as a key opportunity to help prepare and educate both metropolitan and regional audiences about the project.







# Break – 15 minutes

In partnership with



# Member questions







# Thank you and close

**Next meeting: 4 September 2025**

In partnership with

