

Permanent access changes

PAKENHAM ROADS UPGRADE

**BIG BUILD
ROADS**



We're upgrading Racecourse Road in Pakenham, relieving bottlenecks, improving traffic flow, and making your journey safer and more reliable.

Image above: the Racecourse Road Upgrade will deliver safety benefits for all road users.

Safety improvements

Once the upgrade is complete, there will be two lanes in each direction on Healesville-Koo Wee Rup and Racecourse roads between Southeast Boulevard and Henry Street.

To reduce the risk of crashes, we'll separate traffic by installing centre medians and safety barriers.

This means that access to most driveways and side streets will be left-in and left-out only.

Drivers will be able to turn right and u-turn at the traffic light intersections at Railway Avenue and Bald Hill Road, and at the new signalised u-turn lane between Peet Street and the Princes Freeway interchange.

While it might mean you'll have to travel a little further, these changes will improve safety for all road users, lower the risk and severity of crashes, and improve traffic flow by preventing drivers from attempting risky and uncontrolled movements.



Sign up for updates
Subscribe for email and SMS updates
at bigbuild.vic.gov.au/roads-subscribe



Australian Government
BUILDING AUSTRALIA





Changes to the way you access local businesses

Access to Racecourse Road businesses

To enter businesses on the east side between Campbell Street and Bald Hill Road, you'll need to be driving south towards the freeway.

To access these businesses when travelling north on Racecourse Road, **U-turn at the new traffic lights at Campbell Street.**

To get to the Princes Highway when exiting these businesses, turn left and u-turn at the new traffic lights at Bald Hill Road.

To access Patties Food Group

To enter Patties Food Group, you'll need to be driving north towards Princes Highway.

To access Patties when travelling south on Racecourse Road, **U-turn at the new traffic lights at Bald Hill Road.**

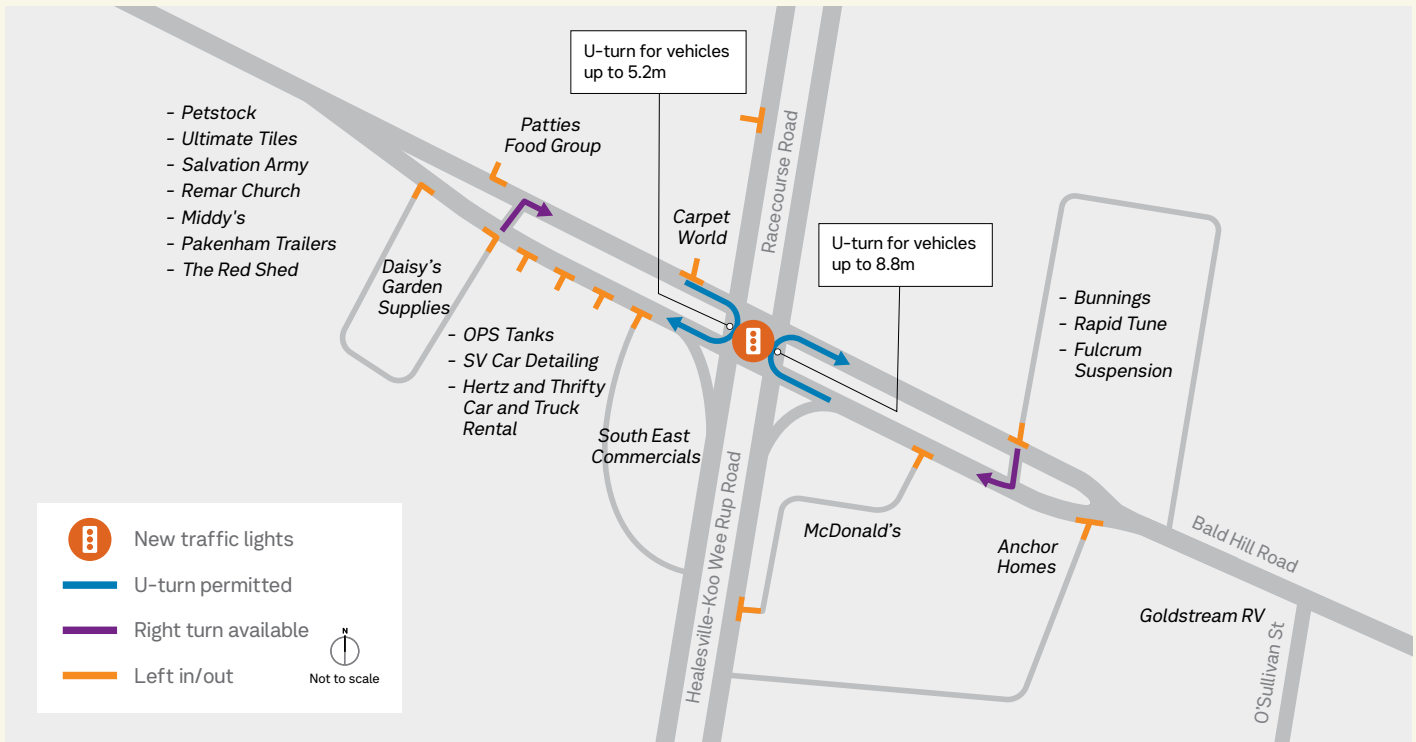
To exit and drive towards the freeway turn left and U-turn at the new traffic lights at Campbell Street.

Heavy vehicles

Drivers of heavy vehicles on the Princes Freeway will need to plan ahead to safely access businesses on the eastern side of Racecourse Road and Healesville-Koo Wee Rup Road.

Heavy vehicles can use the McGregor Road exit and the Princes Highway to travel south on Racecourse Road.

When travelling north on Healesville-Koo Wee Rup Road, heavy vehicles can access businesses between Bald Hill Road and Peet Street by turning right into Peet Street, and using O'Sullivan Street and Bald Hill Road to travel south.



Access changes at Bald Hill Road

The median will be extended either side of the new signalised intersection, meaning a change in access to a small number of businesses.

East of Racecourse Road

Entry to Bunnings, Rapid Tune and Fulcrum Suspension will be via left turn only.

To access Bunnings, Rapid Tune and Fulcrum Suspension from Nar Nar Goon, continue to the new traffic lights at Racecourse Road and U-turn, then turn left into the driveway.

Larger vehicles up to 19m in length will be able to use the roundabout at Main Street to U-turn. Please plan ahead to ensure you can access these driveways safely.

To travel from Bunnings, Rapid Tune and Fulcrum Suspension towards Pakenham and Koo Wee Rup, turn right from the driveway through the break in the centre median to the new traffic lights.

West of Racecourse Road

Access to and from most businesses will remain unchanged. Access to businesses located near the extended median, SV Car Detailers, Hertz and Thrifty Car and Truck Rental, will be via a left turn only.

To access SV Car Detailers, Hertz and Thrifty Car and Truck Rental from Main Street, continue to the new traffic lights at Racecourse Road and U-turn, then turn left into the driveways.

Larger vehicles can turn right at the new traffic lights and U-turn at the new signalised U-turn bay to travel north on Healesville-Koo Wee Rup Road and turn left into Bald Hill Road.

To exit SV Car Detailers, Hertz and Thrifty Car and Truck Rental and travel towards Racecourse Road, turn left and U-turn at the Main Street roundabout.

Access to Healesville-Koo Wee Rup Road businesses

To enter businesses on the east side of the road between Bald Hill Road and Peet Street, you'll need to be driving south towards the freeway.

To access these businesses when travelling north from the freeway:

- drive to Bald Hill Road and perform a U-turn at the new traffic lights, or
- turn right into Peet Street, left into O'Sullivan Street and left on Bald Hill Road to travel south back on Healesville-Koo Wee Rup Road.

To exit these businesses and drive towards Racecourse Road, turn left and drive to the signalised U-turn bay past Peet Street.

To access businesses on the western side of the road when travelling south on Healesville-Koo Wee Rup Road, **U-turn at the signalised U-turn bay to travel north.**

To exit and drive towards Princes Freeway:

- turn left and drive to Bald Hill Road and U-turn at the new traffic lights, or
- turn right into Bald Hill Road and use O'Sullivan Street and Peet Street.

Access to Peet Street

When travelling on Healesville-Koo Wee Rup Road from the freeway, you'll be able to access Peet Street via a designated right turn lane through a break in the median.

Changing the way you travel

The project will noticeably change the way you travel around your local area.

As we'll restrict where cars can turn right across multiple lanes, drivers will need to make a U-turn at the closest intersection; or a dedicated U-turn bay to access certain properties.

We have designed the Pakenham Road Upgrade to relieve bottlenecks, improve traffic flow and make your journey safer. To make the road environment safe for all of the community, including pedestrians, drivers and cyclists, we use commonly used vehicle sizes to design the intersections.

Turns at these intersections may still be possible by larger vehicles, although they may need to mount kerbs or momentarily enter an adjacent lane to make the turn. Some larger vehicles will need to use the local road network to turn around.

Safe U-turn options for passenger vehicles will be provided at the following intersections along Racecourse Road and Healesville-Koo Wee Rup Road:

- Racecourse Road/Railway Avenue/Campbell Street
- Racecourse Road/Bald Hill Road
- Healesville Koo Wee Rup Road/Southeast Boulevard (existing)

Larger vehicles (up to 8.8m) can U-turn at the U-turn bay between Peet Street and Princes Freeway.

While we build the Racecourse Road Upgrade, there will also be temporary changes in access to your business at times. We will provide as much notice as possible and work with you to minimise impacts to your business.

To keep up to date with all Pakenham Big Build disruptions information, visit bigbuild.vic.gov.au/pakenhamdisruptions.

Supporting an active community

Pedestrians and cyclists will also benefit from the upgrade, with improved access to cycling and walking paths and safer road crossings along the road.

As part of the upgrade, we'll build a new shared use path on the western side of Racecourse Road between Henry Street and the Princes Freeway and on both sides of Bald Hill Road between Racecourse Road and O'Sullivan Street. The new shared use path will connect with the path network built as part of the Level Crossing Removal Project, providing safe access to Pakenham Station via Railway Avenue and Bald Hill Road.

To provide safer and easier access to local businesses, we'll also build a new footpath on the eastern side of Racecourse Road between Henry Street and the Princes Freeway and on the southern side of Bald Hill Road between Racecourse Road and Webster Way.



bigbuild.vic.gov.au/roads



For languages other than English please call 9209 0147

1800 105 105 (call anytime)

contact@bigbuild.vic.gov.au



Please contact us if you would like this information in an accessible format. If you need assistance due to a hearing or speech impairment, visit relayservice.gov.au