



Heatherton Community Reference Group

Meeting #14

21 October 2025



We respectfully acknowledge the Traditional Owners of this land
and pay respect to their Elders, past and present.



Welcome

Agenda

Topic	Speaker
Welcome	Kim
Actions	All
Environmental monitoring	All
Break	
Communications and engagement update	All
Initial and Early Works update	Laing O'Rourke (LOR)
Tunnels South update	Suburban Connect (SC)
Forward program	LOR and SC
Other business	All
Questions	All

Actions

Actions | Current

CRG meeting date	Action	Status
24 June 2025	SC to investigate if cleaning services such as air conditioning filter cleaning and solar panel cleaning can be provided.	Can be provided. EOI coming as part of Summer Blitz program.
24 June 2025	SRLA and SC to investigate if gate can be provided at southern entrance to the Kingston Walk Linear Reserve (KWLR).	Installation of gate/ works in KWLR to be considered as part of Linewide package. Feedback noted ahead of this future engagement.
24 June 2025	SRLA to provide an update about the Heatherton public open space offset for the stabling facility.	No update. SRLA will provide an update when available.
19 August 2025	SC, LOR and SRLA to consider how to present noise and vibration monitoring information for future meetings.	Updated in meeting slides, October 2025.

Environmental monitoring

Evening and night period attended noise monitoring

Evening and night period attended noise monitoring

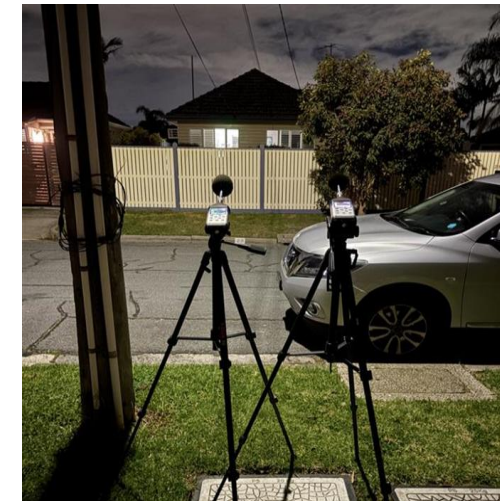
- Attended Noise Monitoring (ANM) was conducted over four nights in August and September 2025 at three locations using calibrated Svantek 977A meters.
- Audible sound levels and low frequency noise were monitored
- Six datasets (combination of generator ON & OFF) were collected, there were no construction activities occurring.



Location 1
Next to generator
Approximately 3 m



Location 3
Kingston Linear Reserve
behind 22 Nicholas Grove
Approximately 150 m



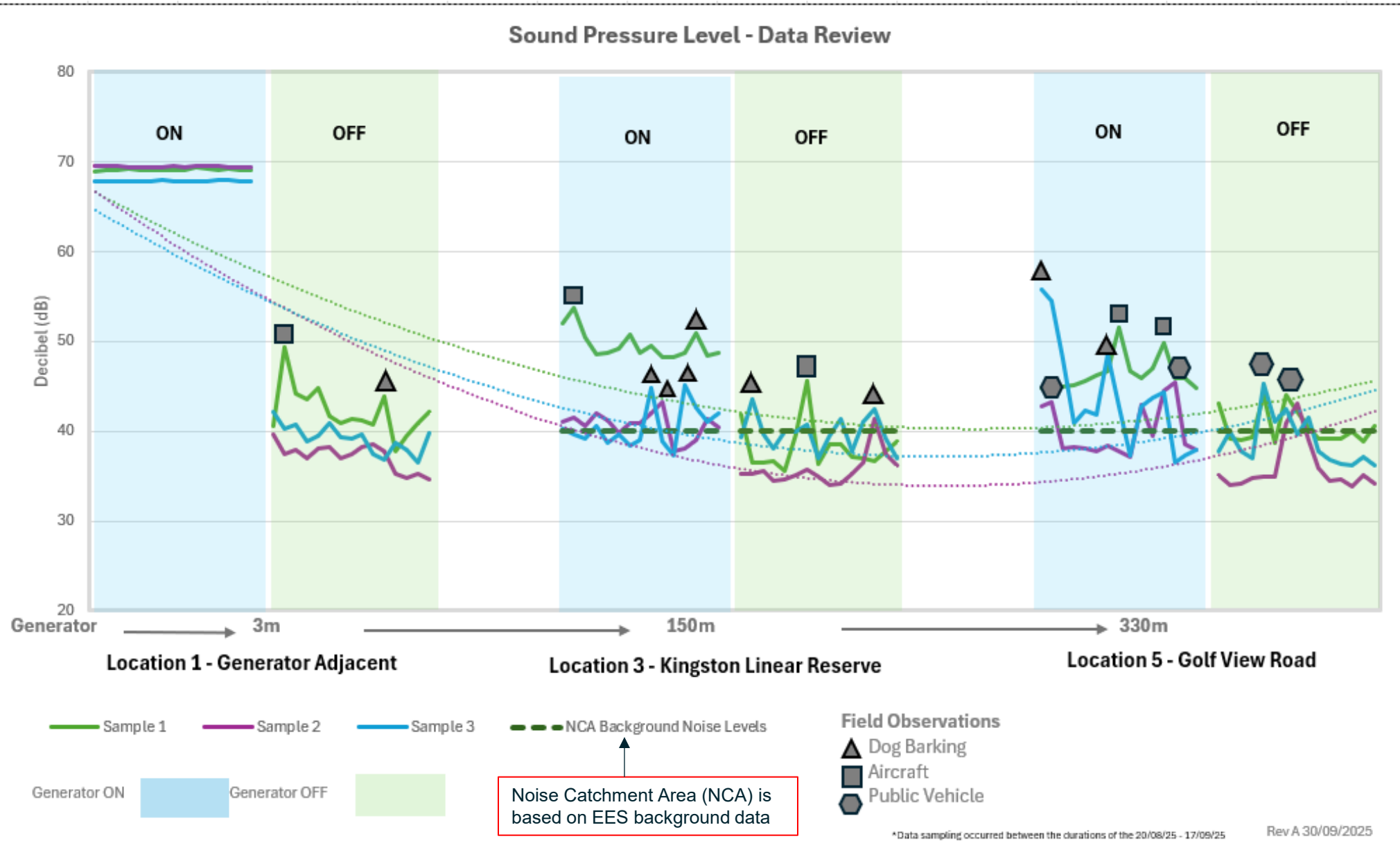
Location 5
27 Golf View Road
Approximately 330 m

Evening and night period attended noise monitoring

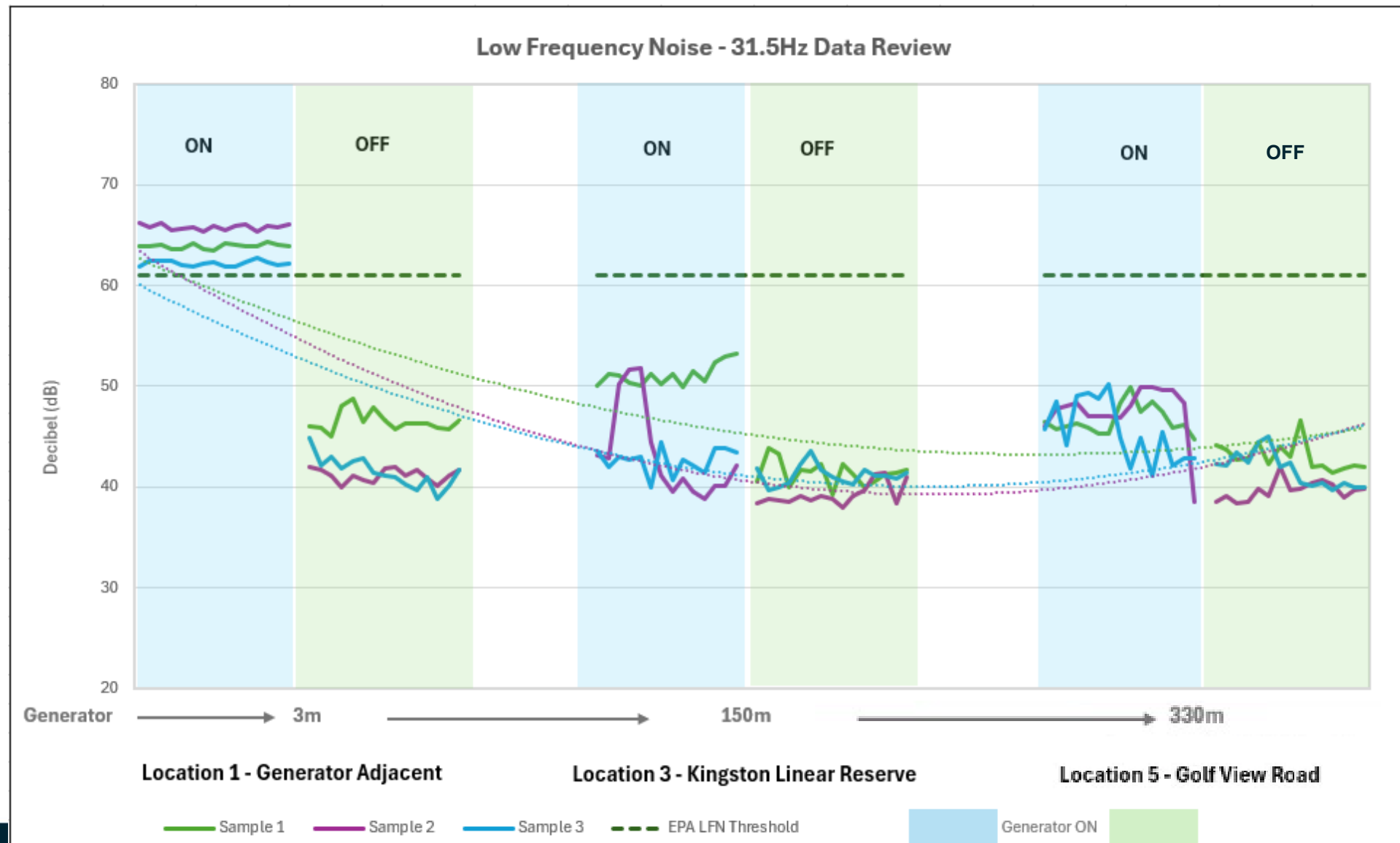
- Noise monitoring results

- 20/08/2025 - noise monitoring with generator turned ON (Sample 1 data —)
- Wind data at Moorabbin Airport confirms wind direction was SE to SSE.
- Generator (ON) could not be heard at Locations 3 & 5
- 3/09/2025 - noise monitoring with generator turned OFF (Sample 1 data —)
- Wind data at Moorabbin Airport confirms wind direction was W to NW.
- 11/09/2025 - noise monitoring with generator turned ON and then OFF (Sample 2 data —)
- Wind data at Moorabbin Airport confirms wind direction was W to NW.
- Generator (ON) could not be heard at Location 3 & 5
- 17/09/2025 - Noise monitoring with generator turned ON and then OFF (Sample 3 data —)
- Wind data at Moorabbin Airport confirms wind direction was W to NW.
- Generator (ON) could not be heard at Location 3 & 5

Results of attended audible sound level monitoring – evening and night period



Results of attended low frequency noise monitoring – evening and night period



*Data sampling occurred between the durations of the 20/08/25 - 17/09/25

Results of evening and night period attended noise monitoring

- Attended noise monitoring was undertaken when there were no project construction activities occurring at the western tunnel entrance.
- Observed background noise during each monitoring event included barking dogs, traffic, and aircraft.
- Results of audible sound level monitoring were consistent with the SRL Environmental Effects Statement (EES) background sound levels.
- Results of low frequency noise (31.5 Hz) monitoring were below the threshold set by EPA Victoria (Publication 1996).

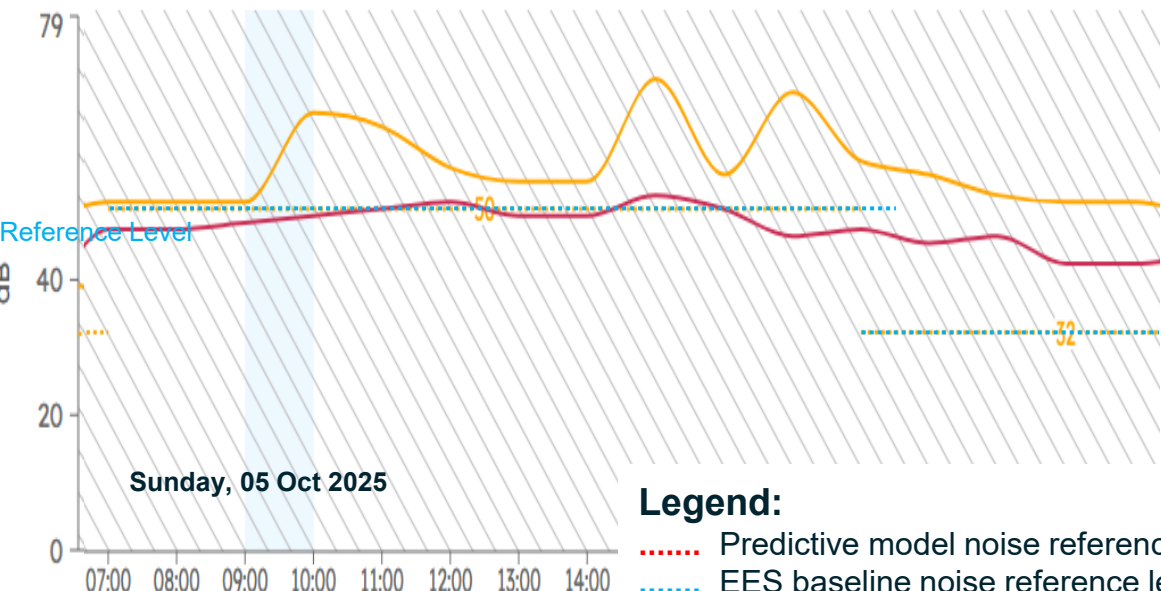
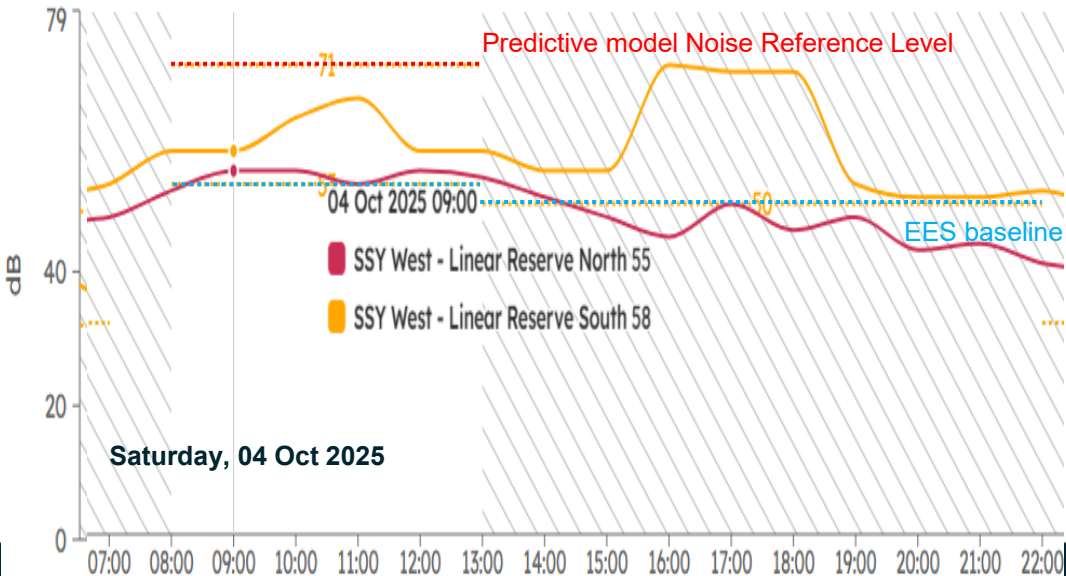
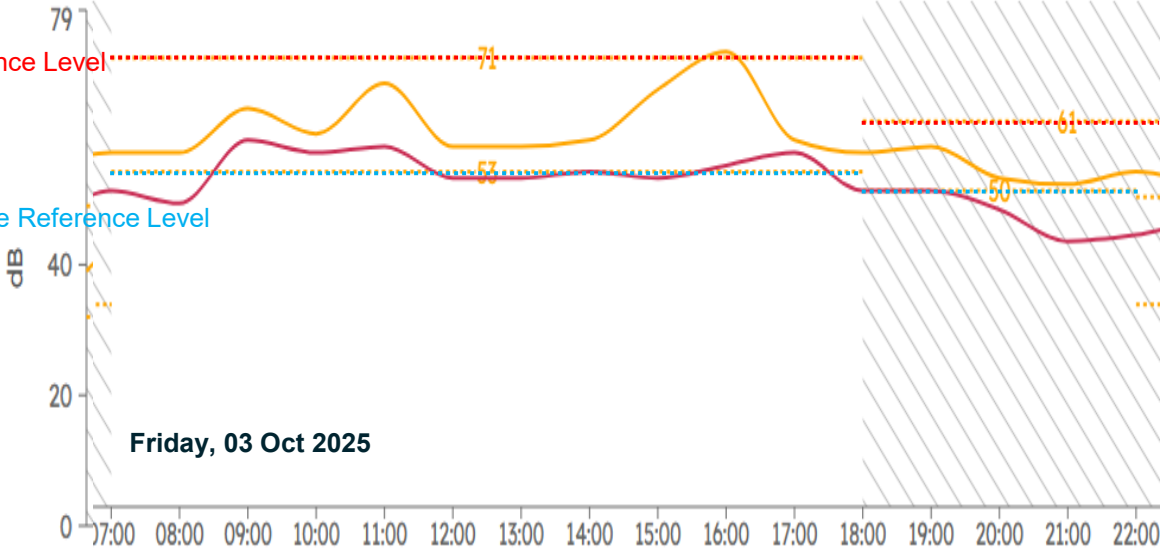
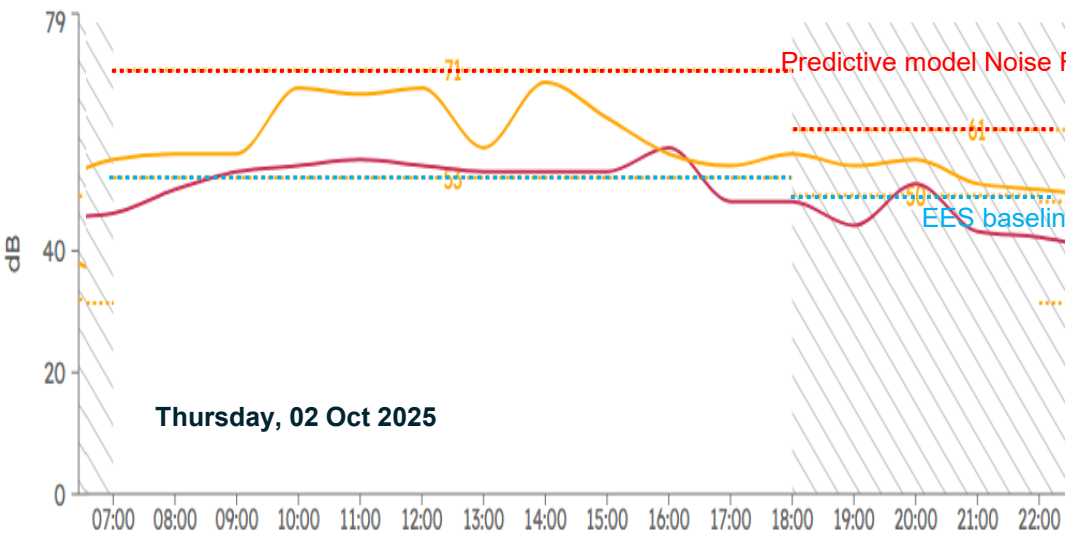
Daytime noise monitoring

Daytime noise monitoring: 02 – 09 October 2025 (western tunnel entrance – linear reserve)



OFFICIAL

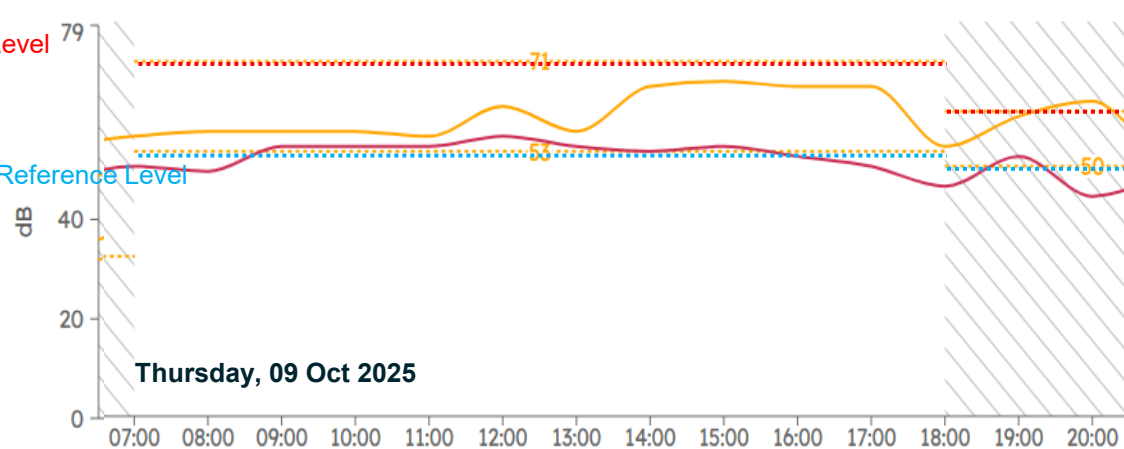
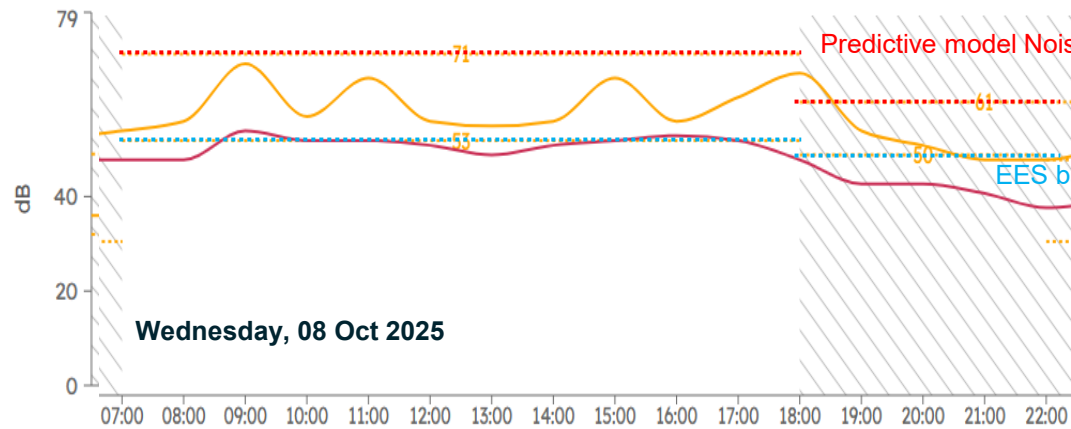
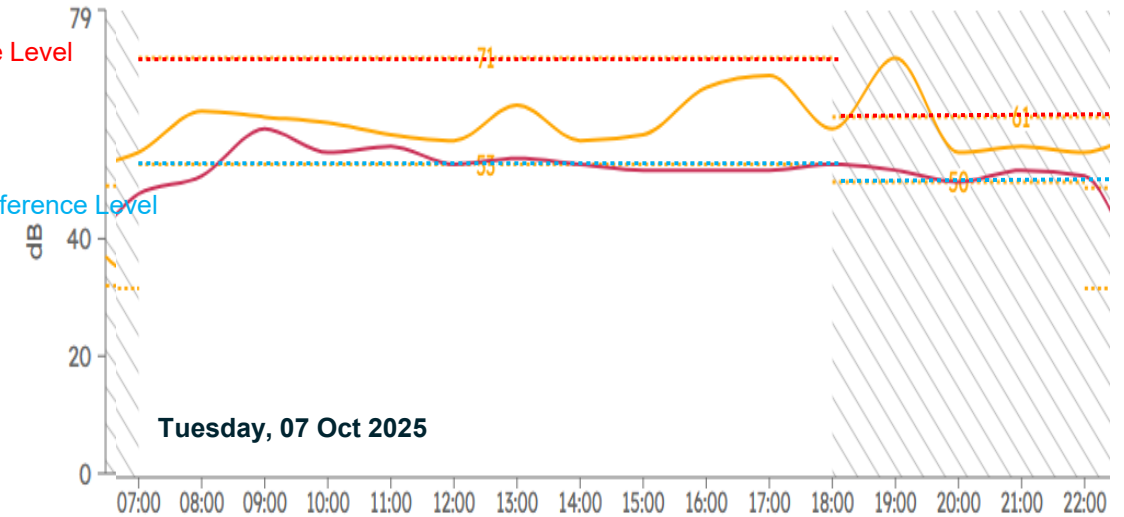
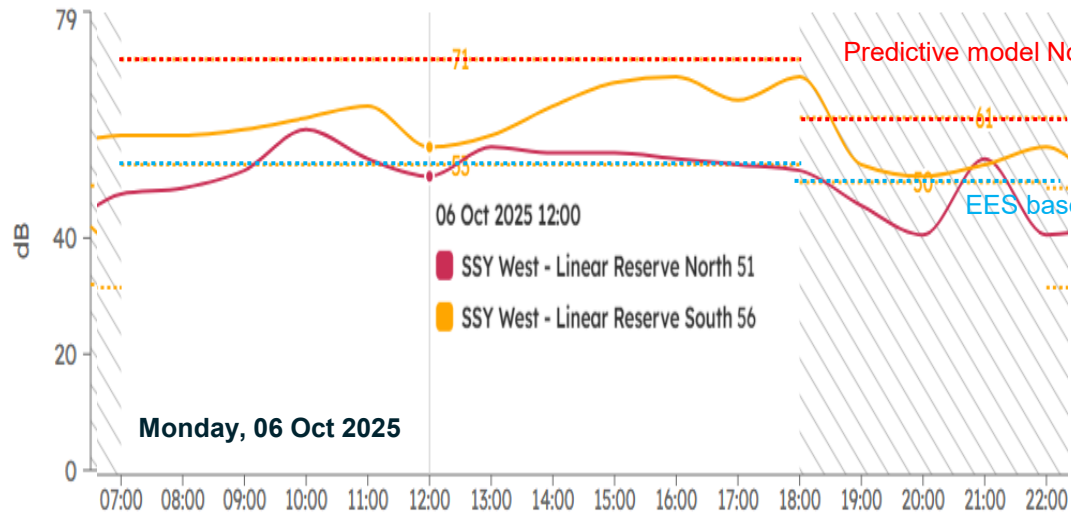
Daytime noise monitoring: 02 – 09 October 2025 (western tunnel entrance – linear reserve)



- Legend:**
- Predictive model noise reference level
 - EES baseline noise reference level
 - SSY West - Linear reserve north results
 - SSY West - Linear reserve south results

OFFICIAL

Daytime noise monitoring: 02 – 09 October 2025 (western tunnel entrance – linear reserve) cont.





Legend:

- Predictive model noise reference level
- EES baseline noise reference level
- SSY West - Linear reserve north results
- SSY West - Linear reserve south results

Vibration monitoring

Attended vibration monitoring map

Week 45-DW5-N, DW3-W		Distance from Resident
DW5-N		100m
DW3-W		70m

- Vibration modelling was completed ahead of diaphragm wall (d-wall) construction activities at the western tunnel entrance
- Modelling considers the 'worst case scenario' (e.g. all pieces of plant and equipment operating at once) to determine minimum safe distances for sensitive (e.g. residential) receivers
- Attended vibration monitoring was located adjacent to the nearest residential receiver to assess real conditions against vibration modelling
- This validated the predictive modelling and verified compliance with Environmental Performance Requirements (EPRs) and Residential Support Guidelines (RSG) requirements.

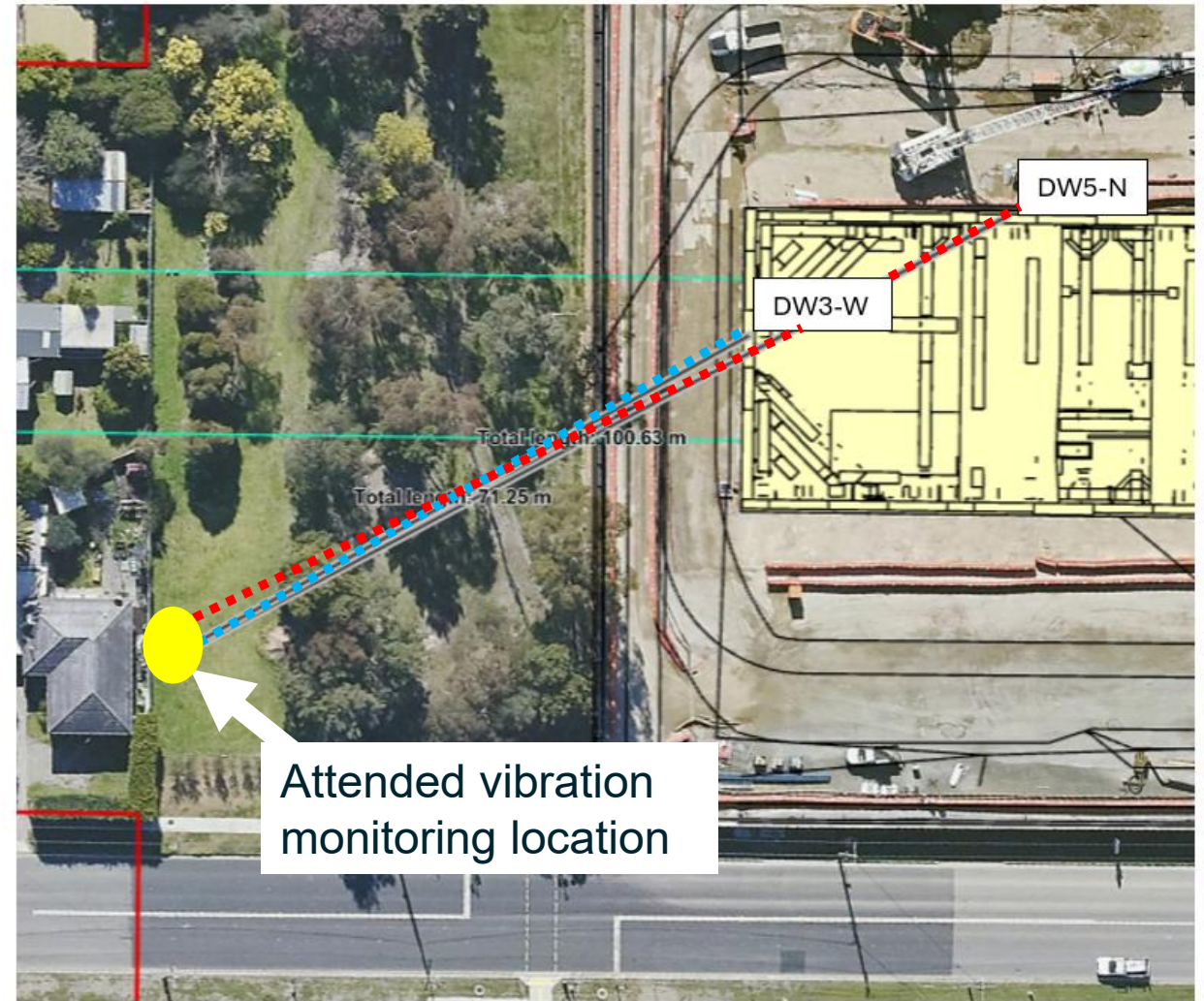


Figure 1 DW3-W, DW5-N

Attended vibration monitoring data

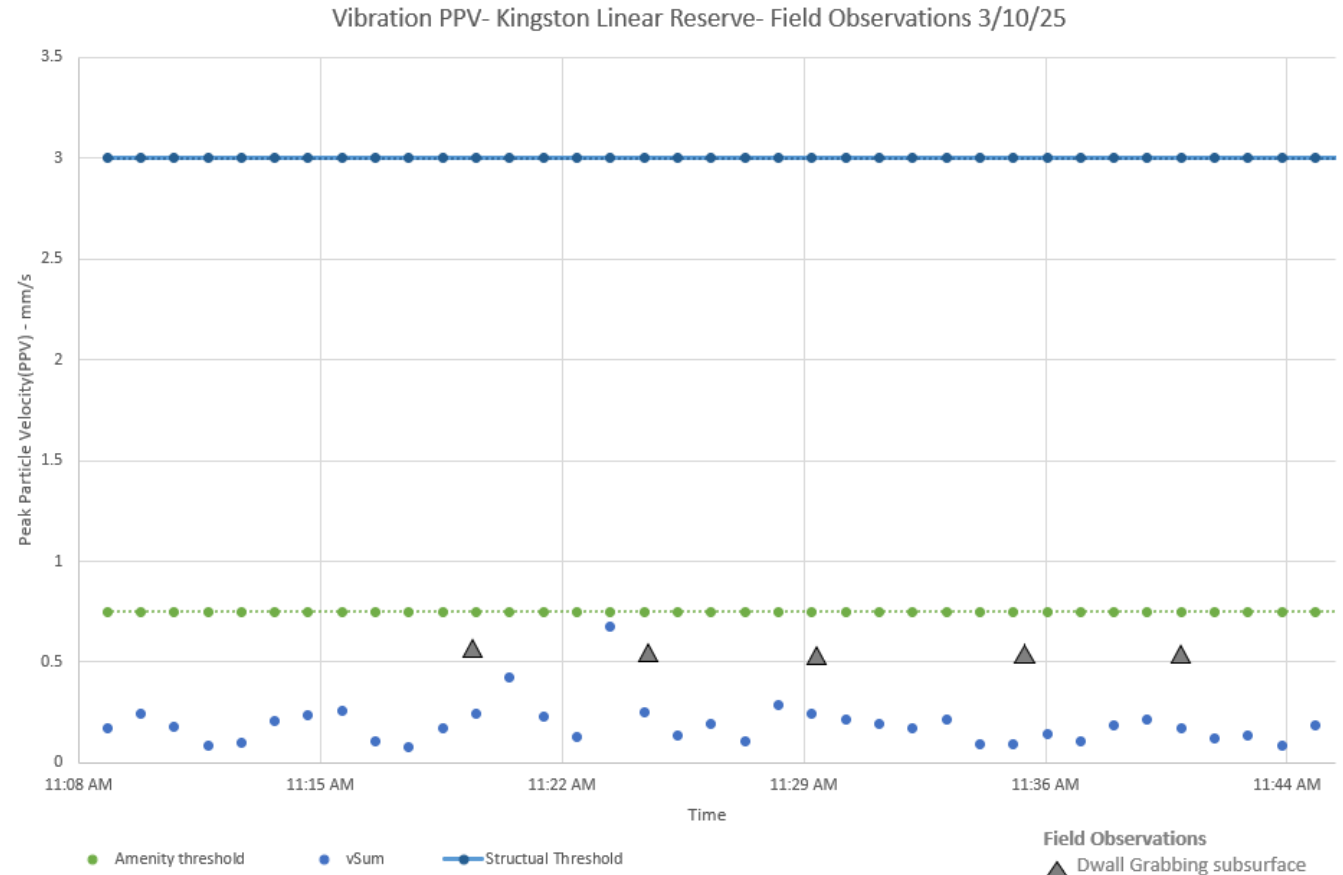
Week 45-DW5-N, DW3-W	Distance from Resident
DW5-N	100m
DW3-W	70m

D-wall excavations are carried out continually during the dayshift only.

D-wall activities involve a clam shovel being lowered to depth and brought back to surface, then unloaded directly into trucks for offsite removal.

During the observed period; a clam shovel was being lowered into the ground approximately every 5 mins.

Vibration levels were below that of Amenity and Structural Thresholds, providing assurance the controls in place are effective.

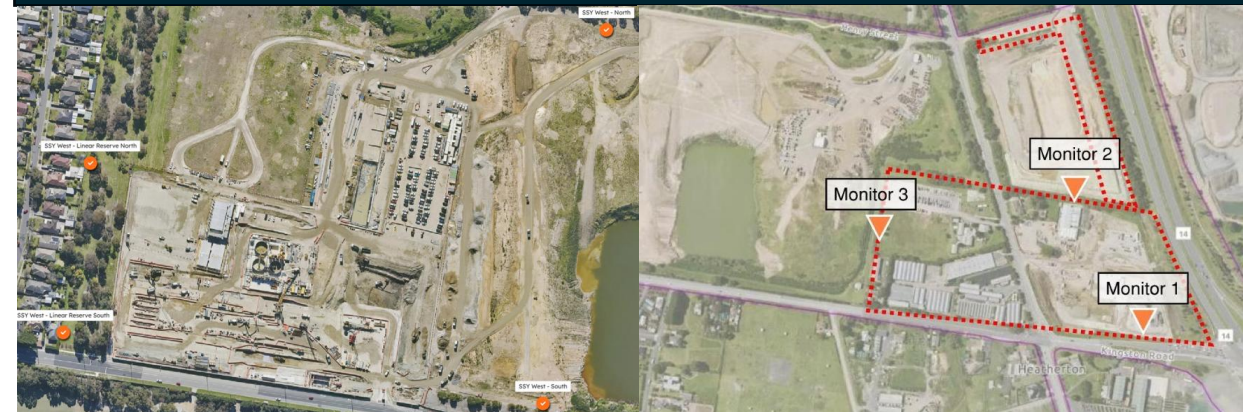


NOTE: Structural threshold – modelled (e.g. damage to structures)
 Amenity threshold - modelled (e.g. human day time comfort threshold)
 vSum – actual results (attended vibration monitoring results)

Air quality, noise and vibration monitoring at Heatherton/Clarinda

- From August to September there were no TARP* events implemented at the Suburban Connect or Early Works sites
 - *TARP - Trigger Action Response Protocol – management measures implemented to avoid or mitigate impacts from dust.
- Ongoing mitigations are in place, including water carts, hoses and street sweeping
- There have been zero construction related noise or vibration exceedances from August to September associated with Early Works or Suburban Connect sites

Monitor locations – Heatherton Stabling Facility



Monitor location – Clarinda network support facility



Monitor locations – Clarinda TBM launch site



Asbestos air monitoring – western tunnel entrance | Monitoring results

Date	Sample Location	Sample period (start-finish)	Avg. flow (mL/min)	Fibres per mL of air
Tuesday 16 Sept 2025	Southern boundary near Kingston Road	06:54 – 14:56	1200	<0.01
	Western boundary adjacent residential area, on fence	06:58 - 14:41	1200	<0.01
Wednesday 17 Sept 2025	Western boundary near residential properties, on fence	06:50 - 13:20	1200	<0.01
	Southern boundary near Kingston Road	06:48 – 13:17	1200	<0.01
Thursday 18 Sept 2025	Western boundary near residential properties, on fence	07:00 - 15:15	1200	<0.01
	Southern boundary near Kingston Road	06:52 – 15:22	1200	<0.01
Friday 19 Sept 2025	Western boundary near residential properties, on fence	07:02 – 14:24	1200	<0.01
	Southern boundary near Kingston Road	06:56 – 14:27	1200	<0.01

Note: This table provides a sample of results across multiple monitoring sites to provide an overview of the results across the worksite.

Monitoring for the presence of any airborne asbestos fibres has been occurring at the Western Tunnel Entrance since 13 September 2024.

All air monitoring results to date have been below the limit of detection for the sampling method (<0.01 fibres/ml of air), providing assurance the controls in place are effective.

Break

Communications and engagement update

Communication and engagement | Update

- Since last CRG (August), Laing O'Rourke received **5 complaints** from 5 residents (as at 14 October)
 - o Complaints were about noise from overnight works on Kingston Road and traffic impacts due to Kingston Road closure
- Since last CRG (August), Suburban Connect received **12 complaints** from 11 residents (as at 20 October).
- Key themes included:
 - Noise, dust and general construction impacts (6 complaints from 6 households)
 - Vibration (4 complaints from 2 households)
 - Kingston Road closure (2 complaints from 2 households)

Communication and engagement | Update

Community engagement

- Regular street walks to ensure a presence in the community
- Families approached with an offer of Melbourne Show tickets prior to the commencement of school holidays. 12 families accepted tickets.
- Community Crew assisted 29 residents with window clean and car washes. They also did a clean of the Kingston Linear Reserve

Double Glazing Program

- Quoting for eligible properties mostly completed
- 14 properties have had glazing installed (as at 20 October)

Blinds Program

- Vouchers for blinds offered to 29 properties to attenuate lighting from site. 6 properties accepted (as at 20 October)



Summer Blitz Program

Expressions of Interest to go out to residents of Golf View Rd, Nicholas Grove, Kingston Rd and Pietro Road. Will include offers for:

- Solar panel and air-condition cleaning
- Landscaping and fencing for eligible properties

Initial and Early Works

Current works

Eastern tunnel entrance

- Final stage of excavation works commenced 18 October for up to two weeks
- Structure scheduled for completion in early-December 2025.

Stabling network support facility

- 66kV cable pulling and testing ongoing (SRLA)
- Integrated testing ongoing
- Network support facility operational from late November (tbc)



Eastern tunnel entrance

Tunnels South update

Western Tunnel Entrance, Heatherton

Current works | Western Tunnel Entrance

- Removal of asbestos containing material ongoing
- Site offices and car park completed.
- Diaphragm wall construction for tunnel entrance underway
- Work on the water treatment plant continues through to mid-November
- Additional fencing and hoarding along Kingston Linear Reserve to Henry Street and Kingston Road to Eastern tunnel entrance



August 2025

TBM Launch Site, Clarinda

Current works | TBM Launch Site

- Site offices and parking now complete
- Diaphragm wall construction complete in the east tunnel shaft and underway in the west tunnel shaft
- Jet grouting and deep soil mixing in east and west tunnel shafts
- Excavation for eastern and western tunnel shafts
- Methodology for 3 cross passages has changed and will now be ground freezing. This occurs below ground with no above ground impacts to
 - Metro Mix site compound
 - Alex Fraser Recycling Group
 - Clayton Road and Ryans Road



Forward program

Heatherton | Works lookahead

OFFICIAL

Works 2025/26	Oct	Nov	Dec	Jan	Feb	Mar
Kingston Road						
Power connections (United Energy/SRLA works)						
Fencing & hoarding to eastern tunnel entrance site						
Network support facility (NSF)						
Building completion						
Eastern tunnel entrance						
Excavation and steel strut installation						
Base slab concrete pours						
Suburban Connect takeover of eastern tunnel entrance site						

Works 2025/26	Oct	Nov	Dec	Jan	Feb	Mar
Western tunnel entrance						
Hardstand areas						
Fencing & hoarding along Kingston Road and Kingston Linear Reserve to Henry Street						
Diaphragm wall construction						
Ground improvement works (jet grouting, deep soil mixing)						
Capping beam on top of diaphragm walls						
Biodiversity investigations (visual monitoring) in Kingston and Henry Street linear reserves						

Clarinda | Works lookahead

Works 2025/26	Oct	Nov	Dec	Jan	Feb	March
TBM launch site						
Acoustic shed piling						
Ground improvement works (jet grouting, deep soil mixing) east & west tunnel access shafts						
Diaphragm wall construction – West shaft						
Excavation – East & West Shafts						
Jet-grouting cross-passage works (Peace Road)						
Kingston Road						
Water connection – westbound lane closure, approx. 2 weeks (TBC)						
Electrical works – overnight closures including Dingley Bypass						
Dingley Bypass						
Electrical works – Overnight closures						

Other business

2026 meeting dates and frequency

- Five CRG meetings proposed for 2026
- Awaiting parliament sitting dates to confirm schedule
- First meeting of 2026 mid February (tbc) - calendar invites to be issued
- Significant project updates in the interim will be provided via email, general works updates will be provided via works notifications

Questions