



SOUTH YARRA COMMUNITY REFERENCE GROUP

MEETING # 3

TUESDAY 27 March 2018, Punthill Apartments



GENERAL PROJECT UPDATE

- Sunbury to Cranbourne and Pakenham rail corridor Planning process underway
 - MMRA will be seeking feedback from Councils, stakeholders and broader community along the Sunbury to Cranbourne/Pakenham rail corridor from **Friday 23 March to Saturday 21 April 2018**
- Tunnel Boring Machines have been ordered from Herronkonnect, Germany.
- Arden and Anzac temporary electrical substation completed March 2018
 - Substation to provide power for the tunnel boring machines required to build the Metro Tunnel.



CROSS YARRA PARTNERSHIP PROGRAM UPDATE

Site setup and traffic management



SITE MAP AND TRAFFIC MANAGEMENT



Key activities at Eastern Portal over next 12 months



KEY ACTIVITIES AT EASTERN PORTAL OVER NEXT 12 MONTHS

	2018												2019				
	JAN	FEB	MAR	APR	MAY	JUN	JUL	AUG	SEP	OCT	NOV	DEC	JAN	FEB	MAR	APR	MAY
Site Set-up - Hoarding/Jersey barrier - Site Sheds - Storage - Operational set-up - Initial tree trimming removal																	
July Occupation - Tree removal - Service relocations (MTM signal 2.2kV and VicTrack TPG comms) - Rail delineation fence																	
Prepare and pile platform and guide wall (along Osborne St)																	
Pile portal structure (along Osborne St)																	
Benching to east side level, prepare pile platform, east guide walls then east piling, including ramp																	
Extend hard piles/columns to roof slab level (adjacent rail)																	
Form and pour ground level Portal slab, cure, then install gantry cane																	
Excavate inside piles Portal structure, install two layers of struts.																	

Development Plan Update





DEVELOPMENT PLAN UPDATE

- Early Works Plan approved 31st January 2018
- Eastern Portal Development Plan public display from 6th April – 27th April 2018

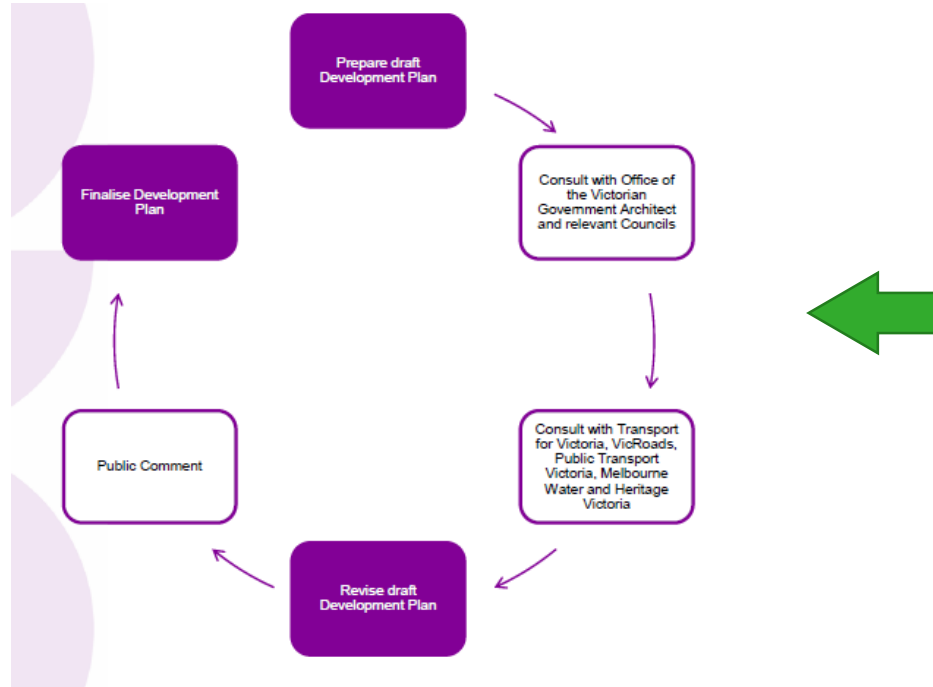
INCORPORATED DOCUMENT REQUIREMENTS

- Approved by Minister for Planning prior to relevant works
- Content:
 - Site layout plan/s
 - Architectural, landscape and public realms and elevations
 - In accordance with Urban Design Strategy and Environmental Performance Requirements
- Consult with:
 - OVGA and relevant council/s
 - VicRoads, PTV, TfV, Melbourne Water and Heritage Victoria
 - Public inspection for 15 business days
- Can be prepared in stages or parts, may be amended

CONTENT OF PORTAL DEVELOPMENT PLANS

- Site context and project works – design information
 - Site plan/s
 - Architectural plans
 - Landscape/public realm plans
- Urban Design Strategy
 - Key directions – design response for each applicable guideline
 - Portal specific – design response for each applicable guideline
- Environmental Performance Requirements
 - Identify applicable EPRs
 - Design response for each applicable EPR

DEVELOPMENT PLAN CONSULTATION PROCESS

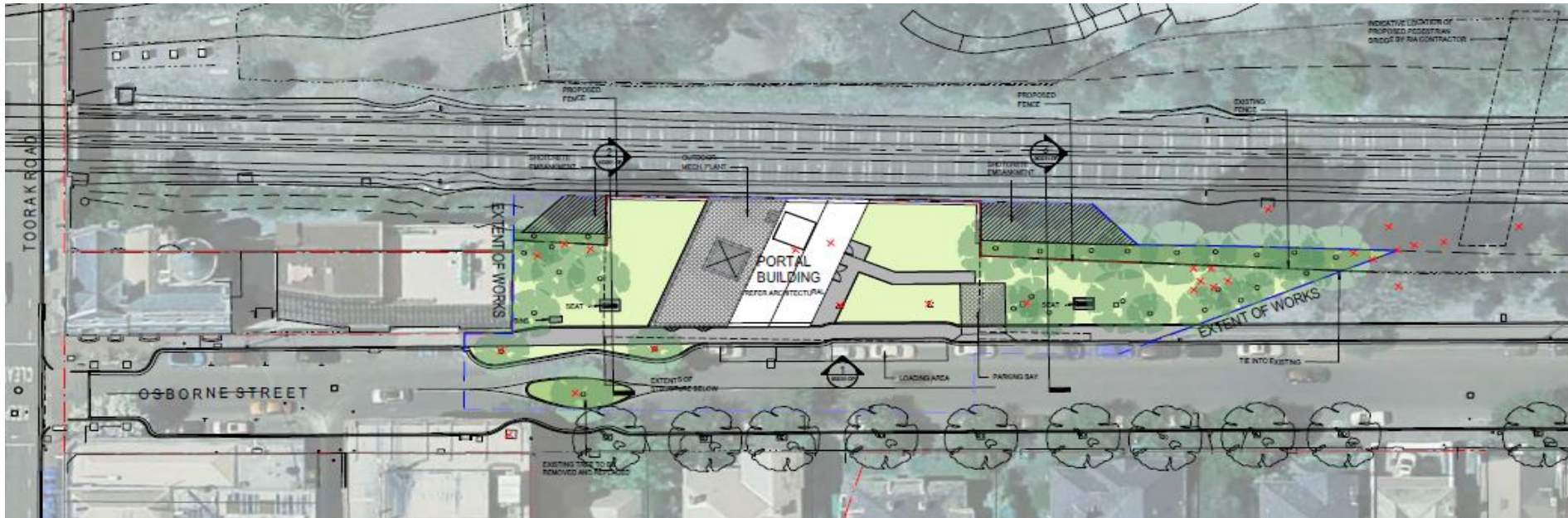


EASTERN PORTAL DEVELOPMENT PLAN

- Eastern Portal works by CYP shown in orange and RIA (yellow) area is indicative only and subject to a separate Development Plan.

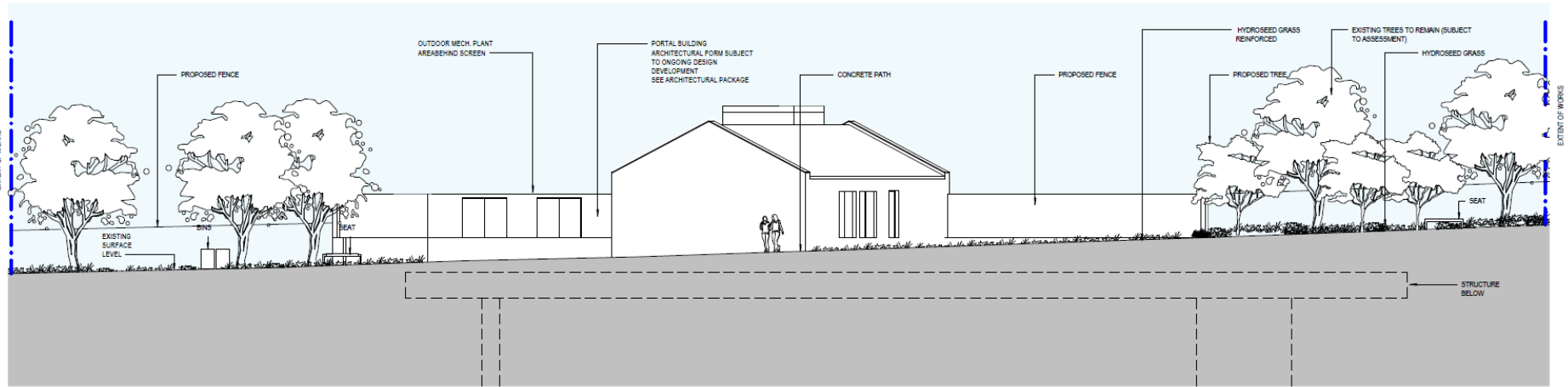


LANDSCAPE AND PUBLIC REALM PLAN



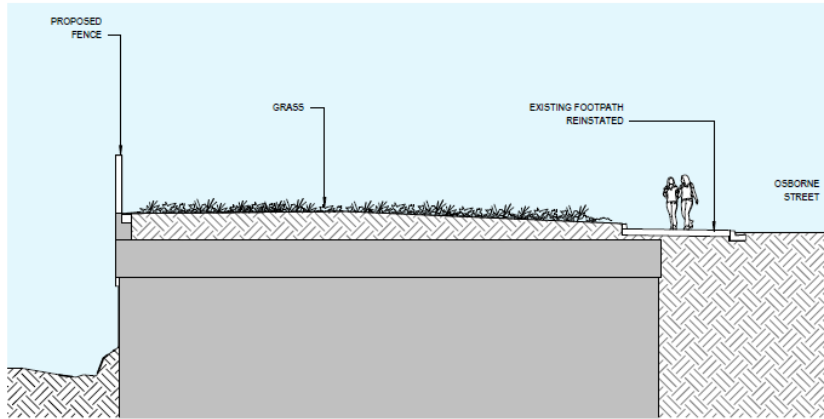
LANDSCAPE AND PUBLIC REALM

North-South cross-section

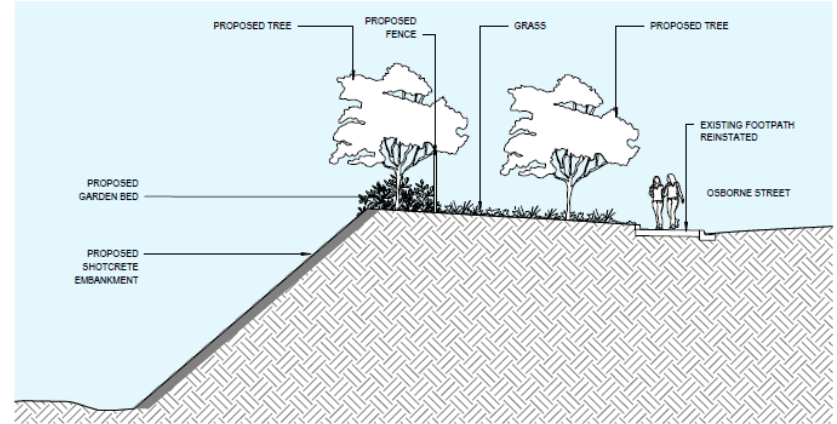


LANDSCAPE AND PUBLIC REALM

East-west cross-sections



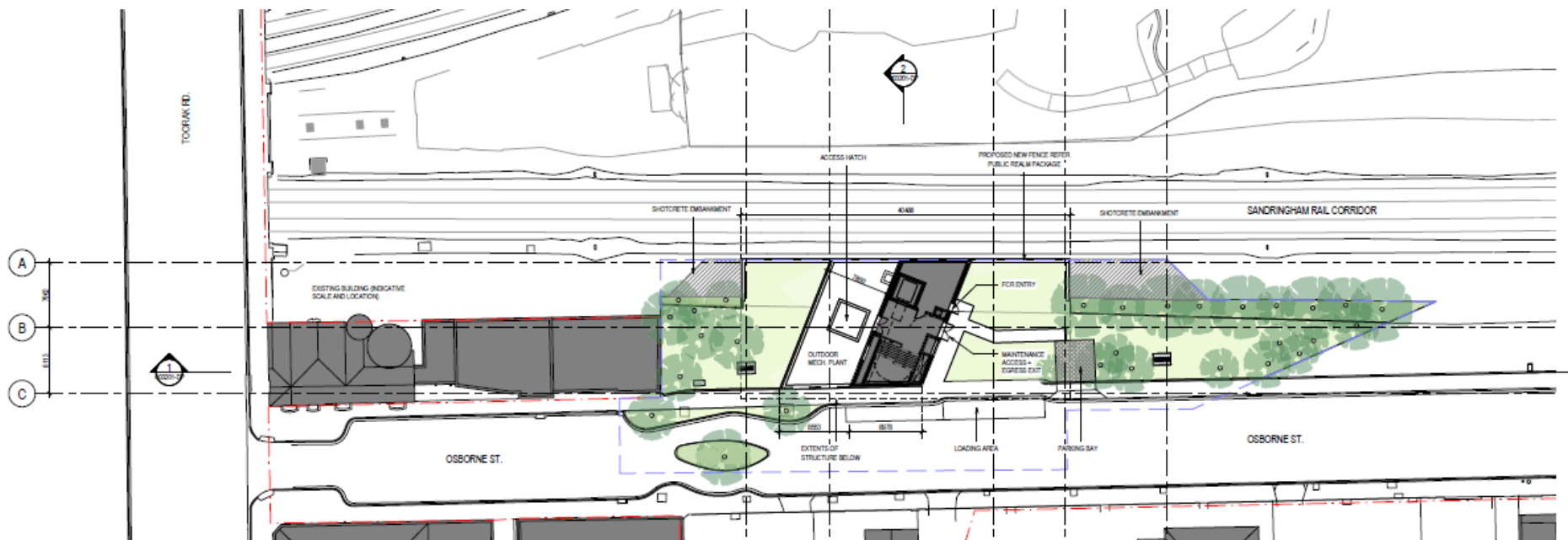
2 SECTION 1
1003 1:100



3 SECTION 2
1003 1:100

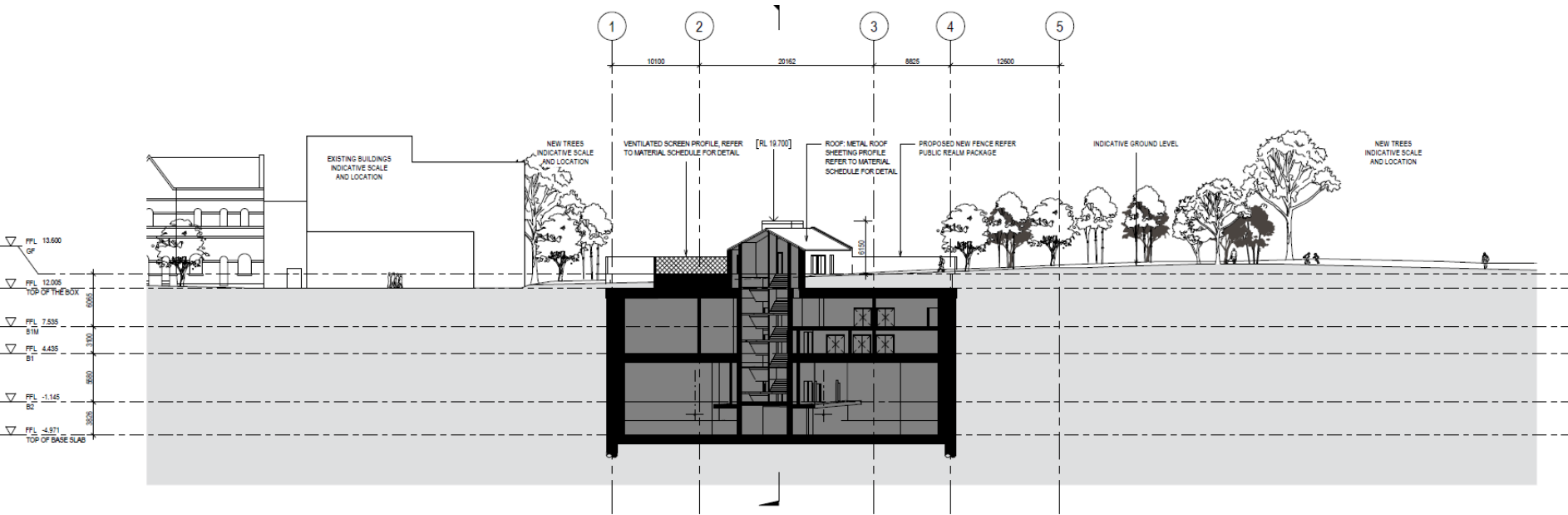
ARCHITECTURAL DESIGN RESPONSE

Ground floor plan



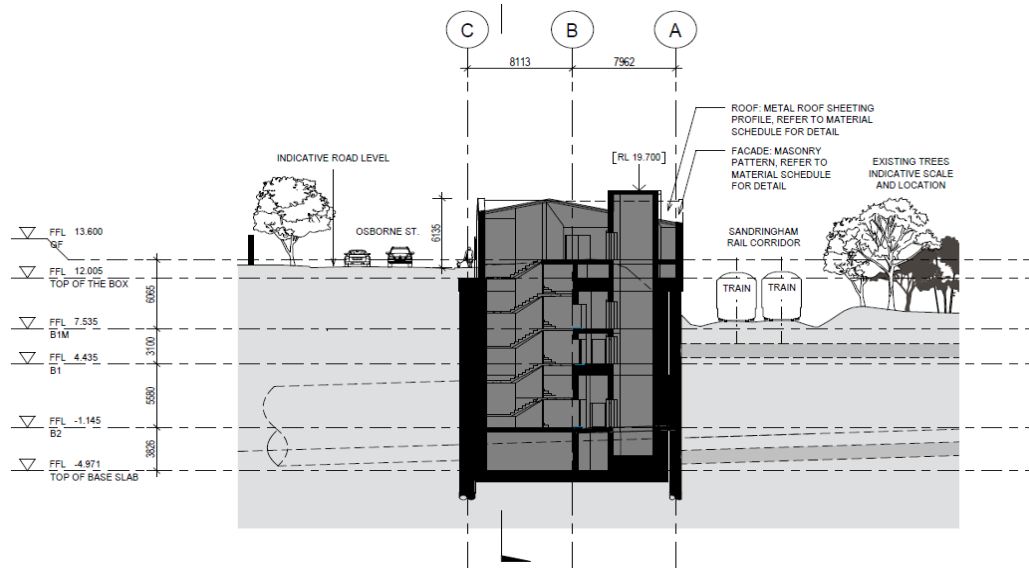
ARCHITECTURAL DESIGN RESPONSE

North-south cross section

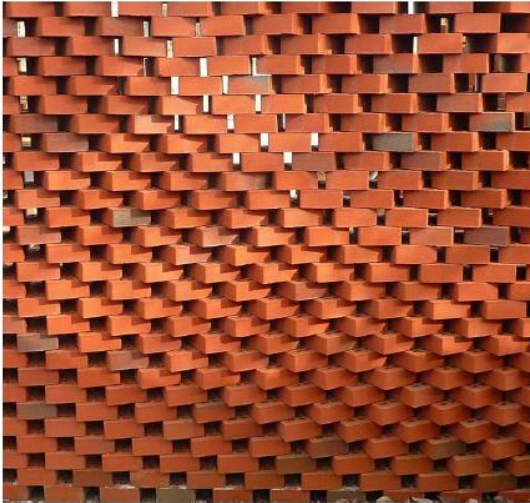


ARCHITECTURAL DESIGN RESPONSE

East-west long section



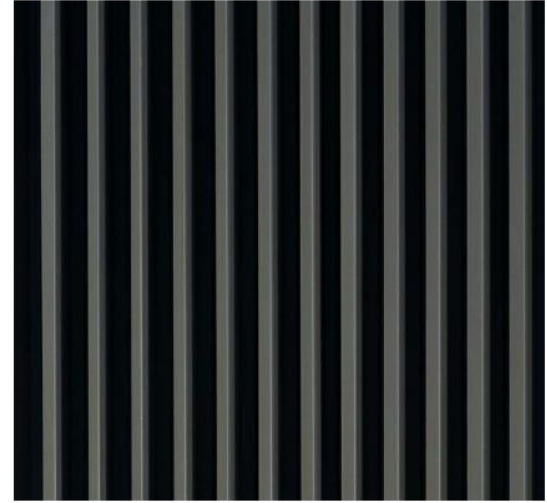
MATERIALS AND FINISHES (INDICATIVE)



MASONRY PATTERN + TEXTURE
TO BE CONFIRMED



METAL ROOF SHEETING PROFILE + COLOUR
TO BE CONFIRMED



VENTILATED SCREEN PROFILE + COLOUR
TO BE CONFIRMED

NEXT STEPS – PUBLIC DISPLAY

- Public display: 6th April – 27th April 2018
- Community information sessions
 - Punthill Grand, South Yarra
 - 5pm-7pm, Monday 16 April and 1pm-3pm, Tuesday 17 April
 - Will be advertised in The Age and Herald Sun
- Available to view on Metro Tunnel website
- Website will include questionnaire and opportunity to upload submissions
- Comment / response register will be prepared and submitted to Minister for Planning



JOHN HOLLAND EARLY WORKS PROGRAM UPDATE

EASTERN PORTAL ONGOING WORKS

- Gas service works in Osborne Street – main laying complete, gas regulator pit to be installed after Easter, with commissioning activities to follow
- 3-5 Chambers Street demolition – starting 4 April to be completed by end of month
- Installing fencing at 3-5 Chambers Street, 6 and 15 William Street
- One day closure of Lovers Walk



QUESTIONS?