

A Greener, Better Connected West

FACTSHEET
JULY 2022



West Gate Freeway – New Street

The West Gate Tunnel Project is more than a road, we are also delivering new cycling and walking paths and creating nearly nine hectares of new open space. This open space will be made up of parks and wetlands, and over 17,000 trees will be planted along the project corridor.

For the area next to the outbound southern portal, we will create a greener and better-connected west by:

- Delivering a walking and cycling path under the West Gate Freeway.
- Turning industrial land near New Street on the border of South Kingsville and Altona North into new open space.
- Delivering a gravel path network that connects the future redevelopment at Precinct 15 to the new open space.
- Delivering a natural playground for children to play and explore.



New open space will replace industrial land

Sign up for updates at westgatetunnelproject.vic.gov.au

In partnership with

 Transurban

**VICTORIA'S
BIG BUILD**

New open space to expand Hyde Street Reserve

Tree and plant species

A selection of native grasses, trees, ground covers and shrubs, will green and colour the landscape around the southern portal.

Native trees such as the Drooping Sheoak will rise 10 metres into the sky providing shade, while shrubs and ground covers including the Kangaroo Thorn, Cranberry Heath and Australian Bluebell will provide a burst of yellow, red and blue.

**Please note that the species and images listed are not limited to that shown above and are only a selection from the overall planting palette.*

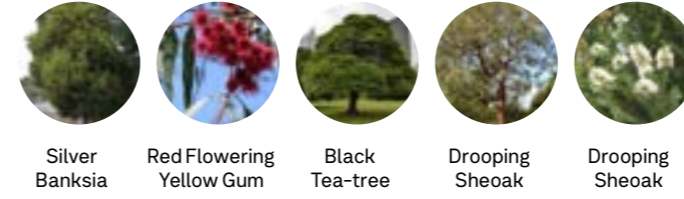
● Groundcovers



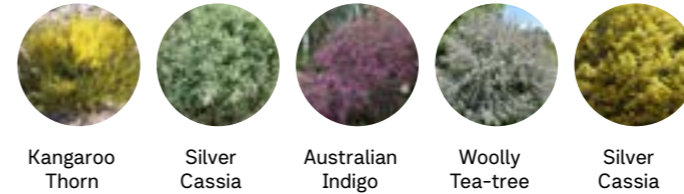
● Native Grasses



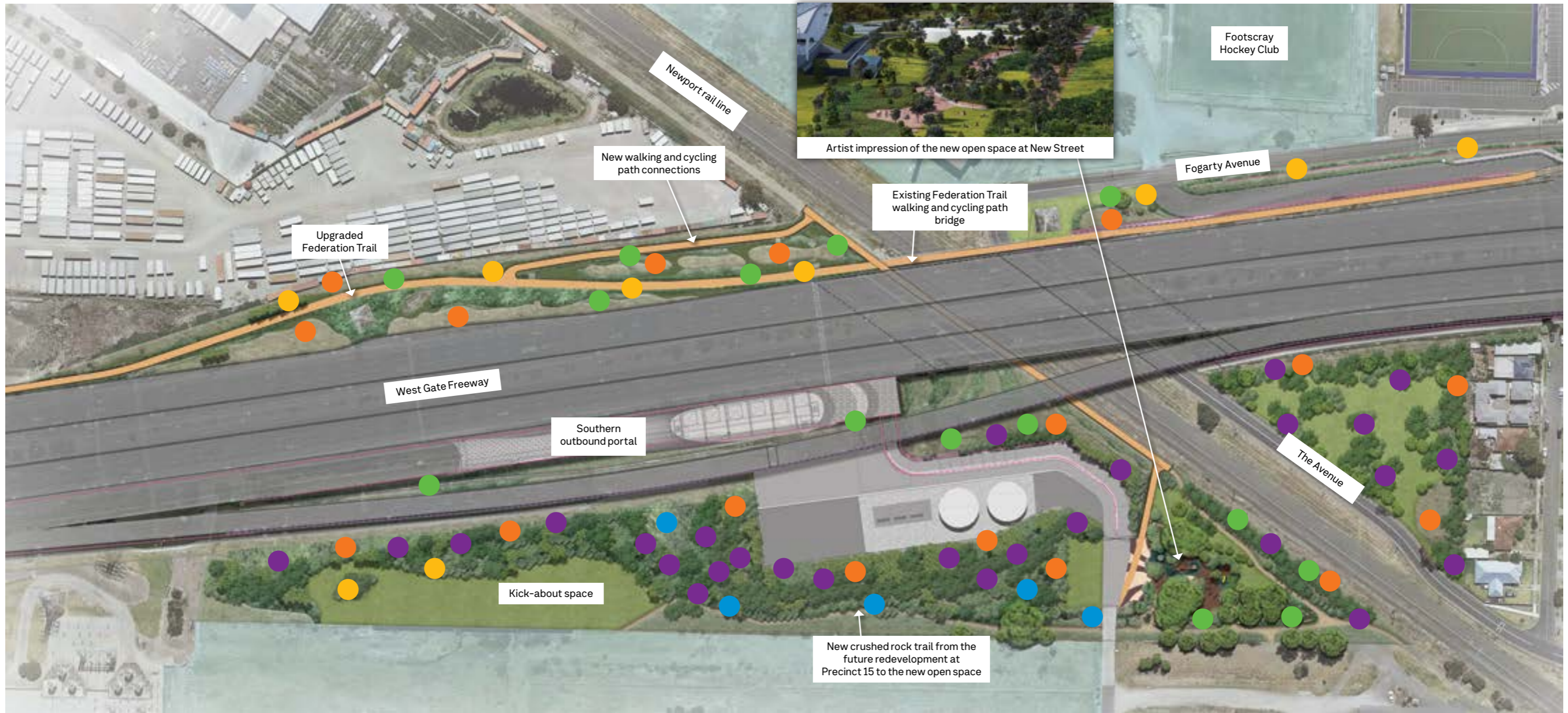
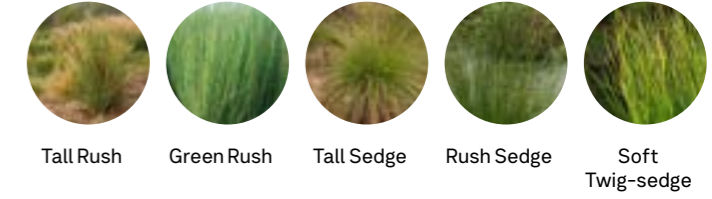
● Native Trees



● Screening and Large Shrubs



● Water Sensitive Urban Design (WSUD)





Artist impression of the southern portal

Designing open space

The open space landscape design has been shaped by:

- Moving the original playground 15m west, allowing a planted buffer between the playground and the Newport rail line.
- Creating a new grassed 'kick about' space to provide a larger area that promotes a range of activities and programs.
- Choosing the right mix of plant species to highlight indigenous vegetation and increase biodiversity and habitats along the creek corridor.
- Identifying the best planting locations to maximise tree canopy cover, meet Urban Forest Strategy requirements, and enhance biodiversity and habitat along the creek corridor.
- Improving public safety by providing clearer sightlines throughout the area, where possible.

Working with stakeholders

After years of talking with communities, local authorities and our Community Liaison Groups, we understand that landscaping is of great interest to locals.

Feedback indicates that community members are keen to see vegetation replaced quickly, with a focus on native plants that will complement and adapt well to the existing local environment, and provide a green visual screen in a range of areas, including near new noise walls.

Residents are also keen to see the project construction sites transform into open spaces for the community, creating new recreation areas along the project corridor.

We will continue to work with local authorities and the community as we build the new open space.

Our West Gate Tunnel Project Information Centre provides a one-stop shop for project information and enquiries.

Come and visit us at corner of Somerville Rd and Whitehall St Yarraville VIC 3013