



# STATE LIBRARY STATION COMMUNITY REFERENCE GROUP

CROSS YARRA PARTNERSHIP D&C

**Jodie Barrington**, CBD Stakeholder Engagement Lead, CYP D&C

8 October 2021



# Acknowledgement of Country



We acknowledge the land on which the Metro Tunnel Project is being delivered, is the traditional land for the People of the Kulin Nation. We respect their spiritual beliefs and acknowledge their ongoing connection with their Country.

We would also like to pay our respect to Elders past, present and future.



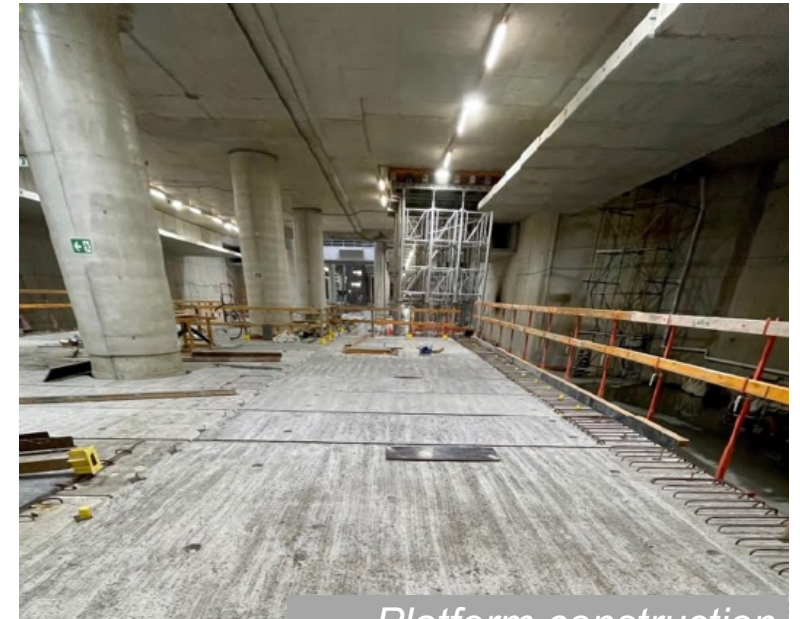
- 1. Project Overview**
- 2. State Library Station Update**

# Project Overview

- Over track exhaust precast panels almost completed
- Topping slab construction for platforms continues
- Brackets being bolted into tunnel as part of rail tunnel fit out works
- Support falsework for station entrance arch installation continues
- Arches to begin arriving to site for installation this month.



*Bracket installation*



*Platform construction*

# PARKVILLE



- Station permanent structure works ongoing, including installation of over-track exhaust, platform, roof slab and internal wall construction, and service installation
- East and west tunnel ventilation shaft construction is ongoing
- Excavation for the western station entrances is nearing completion
- Preparatory works for construction of the Royal Parade underpass has commenced.



*Excavation of the Grattan Street west station entrance*

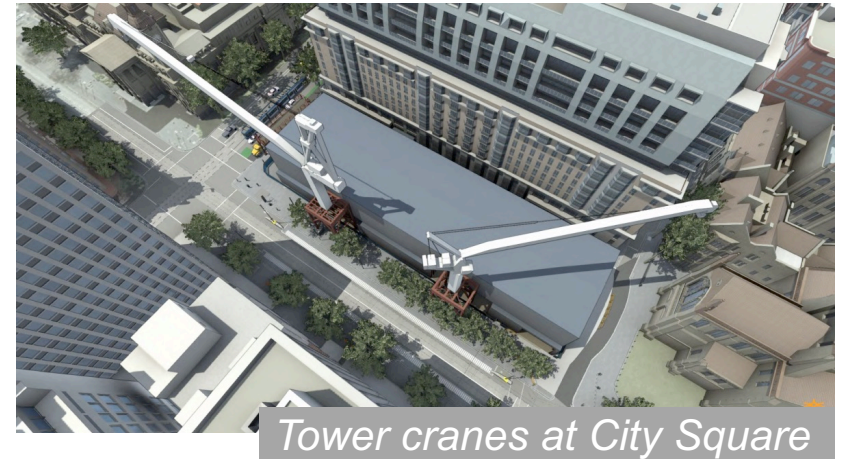


*Over-track exhaust installation and platform wall construction*

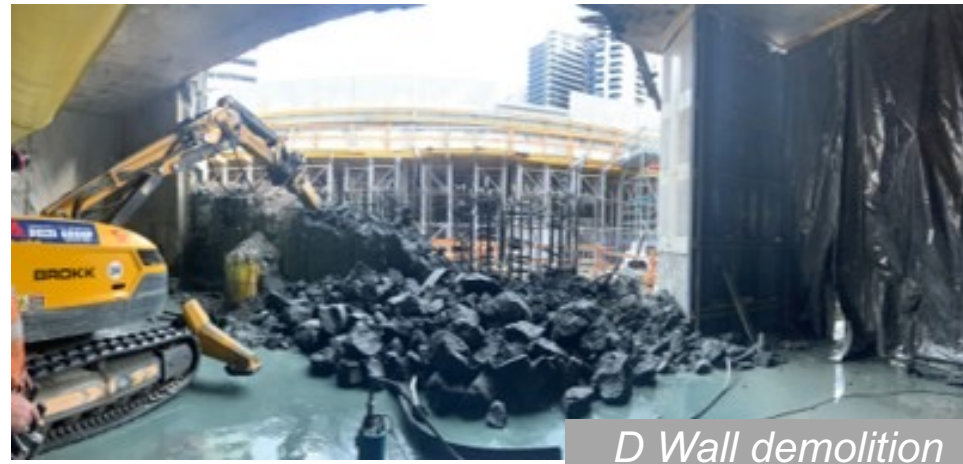
# TOWN HALL



- Roadheader tunnelling is now complete and the final two roadheaders will be demobilised commencing mid- October
- Excavation of basement 3 continues at Flinders Quarter
- Works to complete the roof of Flinders Link are well underway
- At City Square works are progressing toward the installation of two tower cranes on Swanston Street to progress the station entrance build out



- D-wall demolition continues between station entrances and concourse level of station box
- Base slab construction at platform level continues
- Corewalls being constructed at platform and concourse level
- Blockwork walls and doorframes being installed at concourse level



# State Library Station Update

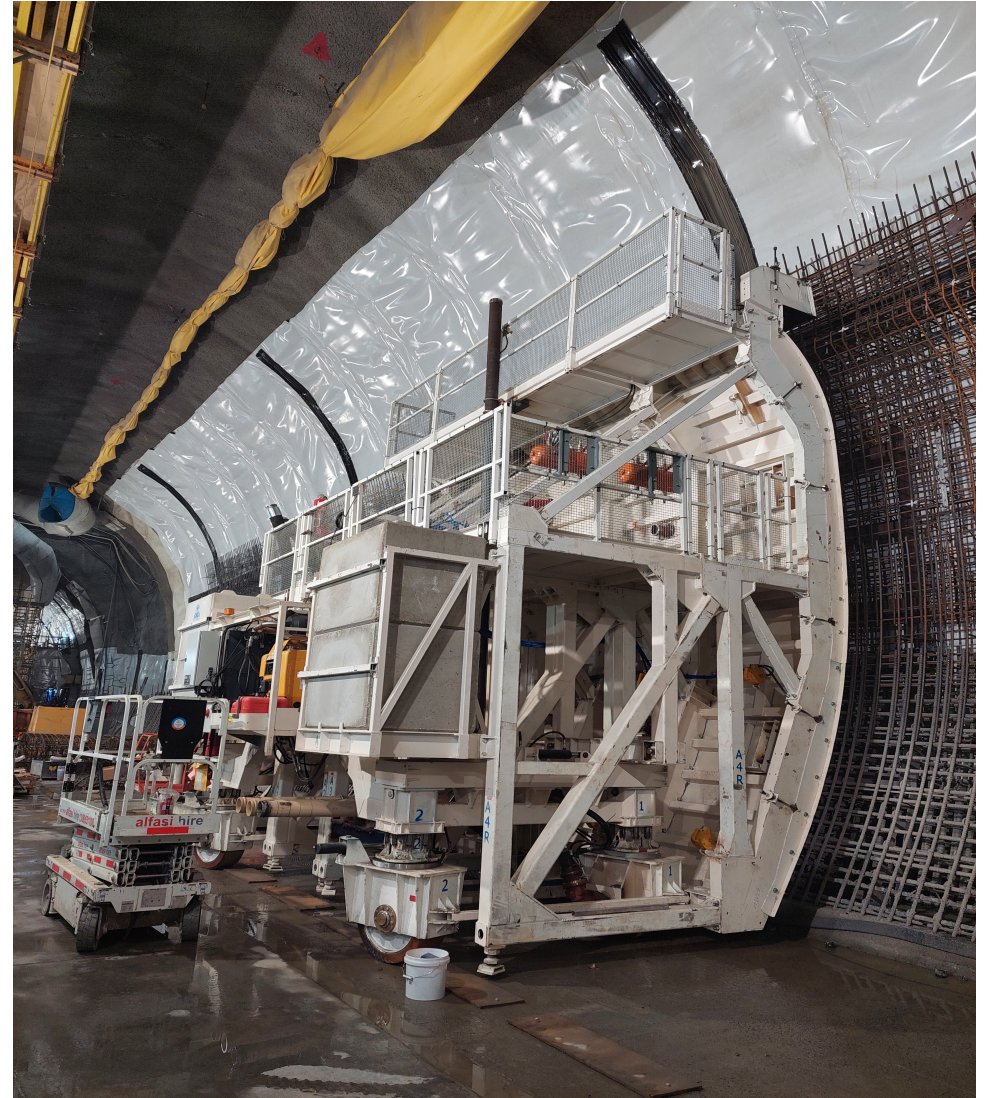
# STRUCTURES AND LINING



# STRUCTURES AND LINING



- Construction of the rail tunnels is progressing with the sidewall and invert (slab) construction continuing for both the eastbound and westbound tunnels
- Installation of waterproofing, formwork and concrete will be ongoing for several months along the central cavern arch and rail tunnels
- Franklin and La Trobe adit construction will continue until 2023
- This includes installing formwork, steel reinforcements and pouring concrete



# STRUCTURES AND LINING



Activity	Oct	Nov	Dec	Jan	Feb
Concrete and reinforcement deliveries and installation					
Waterproofing cavern					
Rail tunnel invert and sidewall construction					
Rail tunnel arch lining					
Franklin and La Trobe St adit construction					

# A'BECKETT STREET SITE



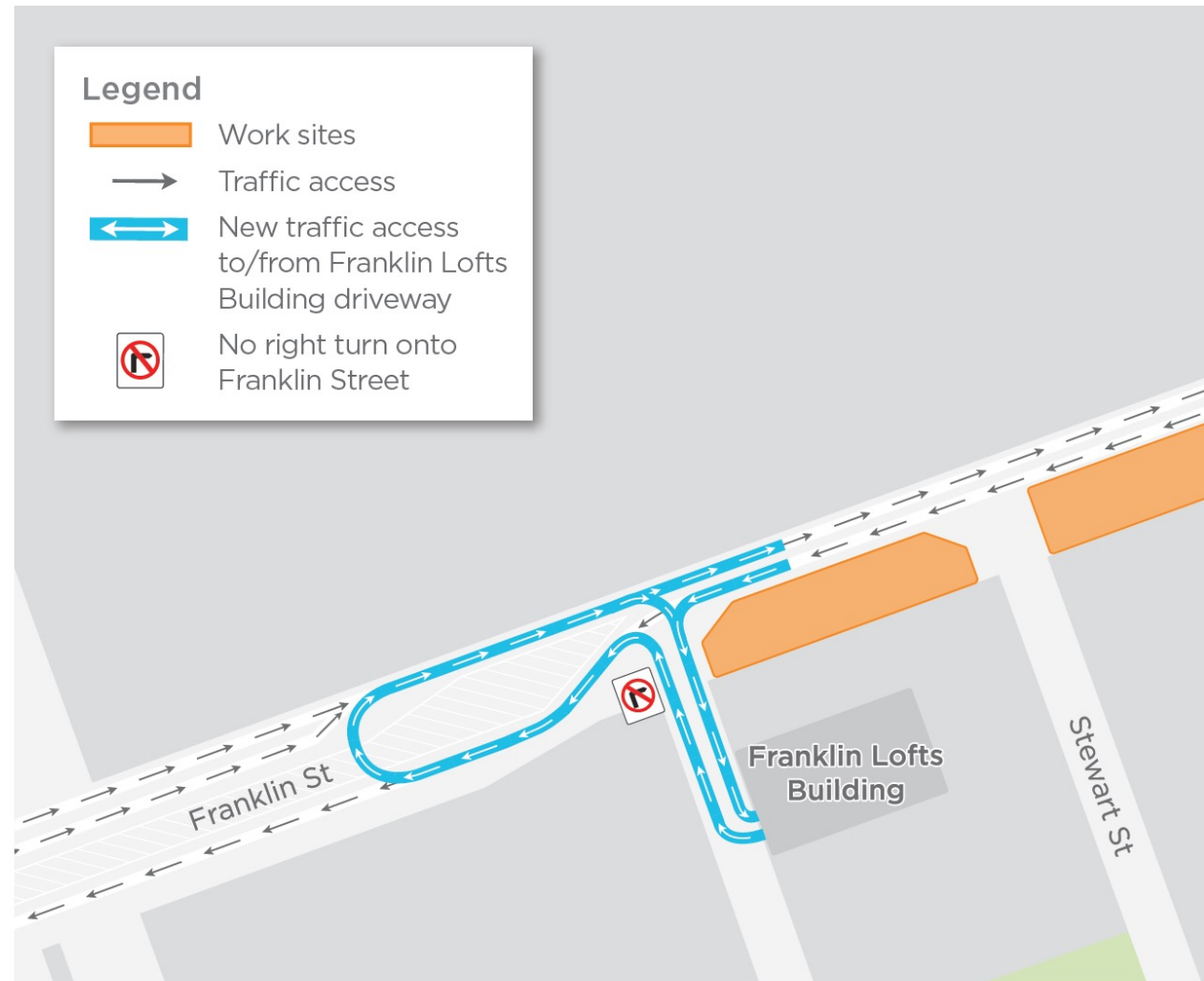
- Logistics for structures and lining works are continuing through A'beckett Street site shed 24 hours a day
- Sunday shifts will continue intermittently to facilitate the increasing underground works taking place in the rail tunnels and Franklin and La Trobe adits



# FRANKLIN STREET SITES



- Works to reconfigure the Franklin Street West laydown area have been postponed to late-October. This will involve the removal and delivery of equipment and site sheds
- With construction of the Scape building nearing completion, a right hand turn onto Franklin Street from the Franklin Lofts and Scape buildings will soon not be possible due to insufficient sight distance requirements
- Vehicles wishing to travel eastbound on Franklin Street will be required to perform a U turn via the bay on Franklin Street (see map)



*Indicative only*

# FRANKLIN STREET EAST



Activity	Oct	Nov	Dec	Jan	Feb
B4 perimeter and internal walls	<div></div>				
B3 suspended slab	<div></div>				
Strut removal		<div></div>			

# FRANKLIN STREET WEST



Activity	Oct	Nov	Dec	Jan	Feb
B6 to B4 perimeter and internal walls	<div></div>				
B4 slab		<div></div>	<div></div>		
Laydown area changes		<div></div>			
Monorail reinstatement		<div></div>	<div></div>	<div></div>	
S4 strut removal			<div></div>	<div></div>	

# LA TROBE STREET SITE



# LA TROBE STREET SITE



## - **Shaft construction**

(Excavation, excavated material removal, steel fixing, concrete pours and deliveries)

- Monday to Fridays, 7am to 12am
- Saturdays, 7am to 6pm

## **Temporary shaft removal**

(Excavation using a hammer attachment)

- Monday to Fridays, 7am to 8pm
- Saturdays, 7am to 6pm

## **Concrete finishing works and oversized deliveries**

- Monday to Saturdays, 10pm to 7am (as required)

## **Swanston Street concrete pump operation**

- Monday to Sundays, 24 hours (as required)

## **Little La Trobe Street concrete pump operation**

- Monday to Saturdays, 7am to 6pm



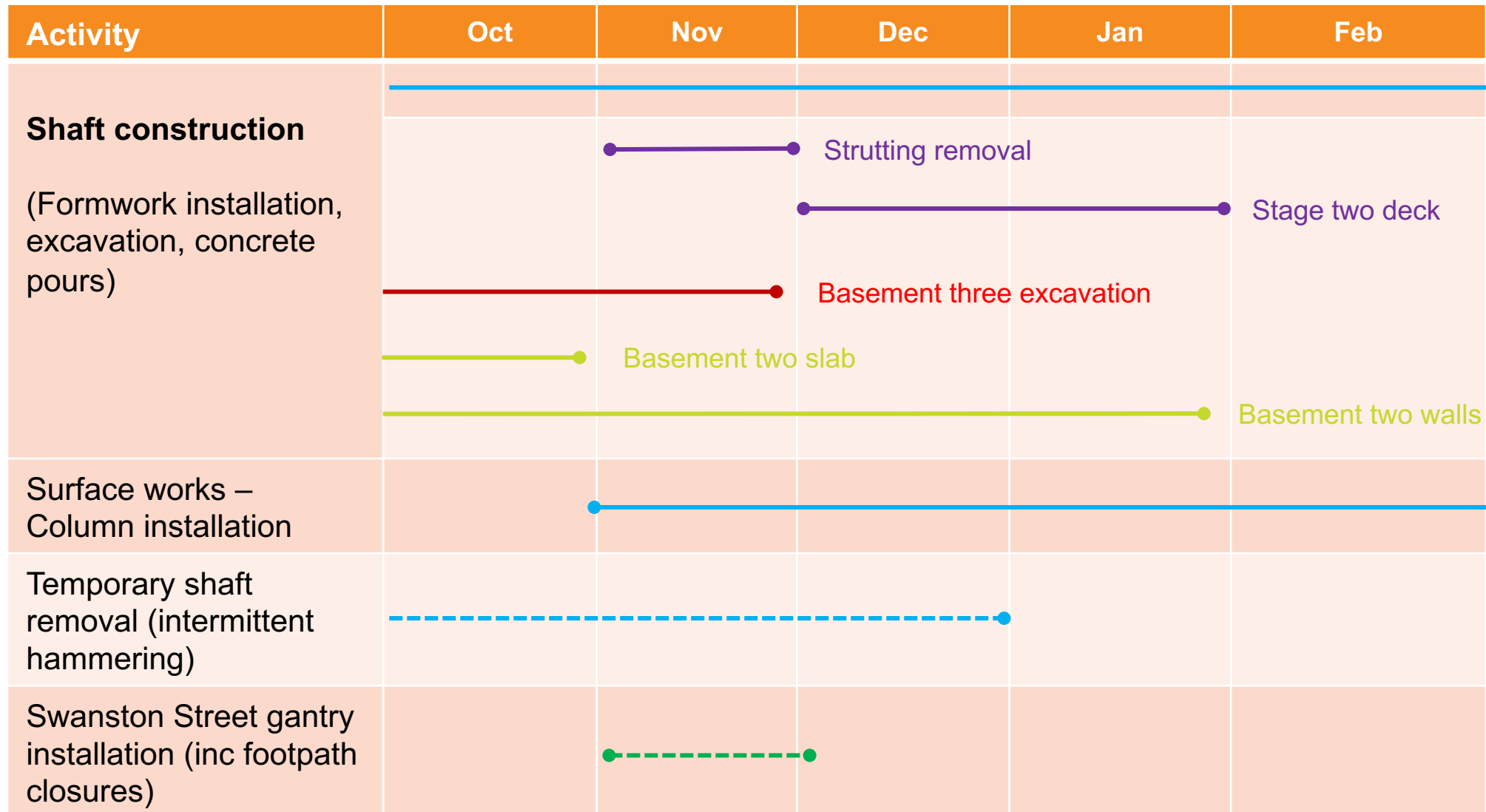
# LA TROBE STREET SITE



- Works to relocate a section of the Swanston St hoarding will begin in November and continue until early December
- This is to allow the new scaffolding design to be implemented, which will facilitate the future above ground construction at La Trobe
- Excavation and FRP works are continuing underground at La Trobe to complete the B2 (see photo) and B3 slabs
- The next major pour at La Trobe is scheduled for late-October



## LA TROBE STREET SITE



# LITTLE LA TROBE STREET SITE



## **Shaft construction works**

- Monday to Fridays, 7am to 10pm
- Saturdays, 7am to 6pm

## **Pile hammering**

- Monday to Fridays, 8am to 4pm

## **Concrete finishing works and oversized deliveries**

- Monday to Fridays, 10pm to 7am (as required)

## **Southern Little La Trobe adit excavation**

- Monday to Fridays, 24h until mid-September
- Resumes again in November



# LITTLE LA TROBE STREET SITE



- Pile hammering works were recently completed for 2021 and will recommence later in 2022
- In mid-October, the team will complete a major concrete pour for the B3 slab, before recommencing excavation at the B4 level



# LITTLE LA TROBE STREET SITE



Activity	Oct	Nov	Dec	Jan	Feb
<b>Shaft construction</b>  (Formwork installation, excavation, concrete pours)	<div><div></div><div>Pour B3 slab</div></div> <div><div></div><div>Excavation B4</div></div>				
Southern Little La Trobe adit excavation		<div><div></div><div>Excavation B4</div></div>			
Pile hammering, shotcreting and pile removal					(Recommencing later in 2022)