

# BUILDING THE RAIL TRENCH



*Early artist impression of the new rail trench under Dublin Road – subject to change.*

We are removing level crossings at Dublin Road, Ringwood East and Bedford Road, Ringwood, which will make Ringwood level crossing free.

In addition to removing the Dublin Road level crossing we'll build a brand-new Ringwood East Station and deliver around 460 upgraded car parking spaces.

The open trench design we will use is similar to what we are building at Union Road, Surrey Hills and Mont Albert Road, Mont Albert, and many of our other level crossing removals across Melbourne.

Early works for the project will start in early 2023, with major works to start in mid 2023 and boom gates gone in 2025.

## Why this level crossing needs to go



Around 10,000 vehicles pass through the level crossing every day



Boom gates down for 22 minutes during the morning peak



18 trains run through the crossing during the morning peak



Dangerous boom gates cause congestion for school, local and passing-through traffic using this vital road connection



**SIGN UP FOR PROJECT UPDATES**  
[levelcrossings.vic.gov.au](http://levelcrossings.vic.gov.au)

# How we build a rail trench

## Phase one

### Preparing the site

Early works will start in early 2023, with the relocation of underground facilities and services to make room for the trench.






Some of the other works include temporary changes to local roads, site establishment, including installation of fencing and hoarding around the perimeter so our crews can work safely, and drilling activity to assess ground conditions.

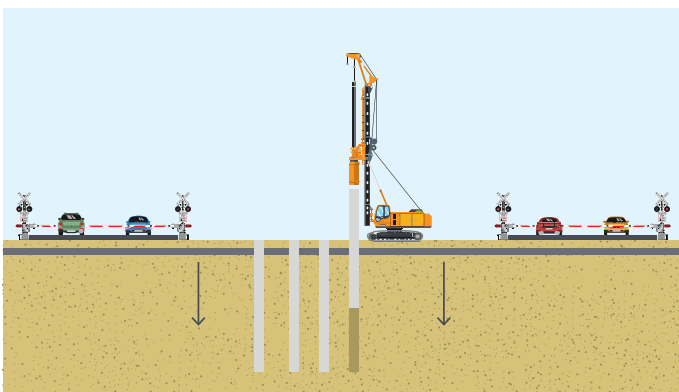
## Phase two

### Major construction

From mid 2023, you'll start to see more construction work in and around the rail corridor, with our piling rigs arriving on site.

#### Activities in this phase include:

-  temporary changes to local roads depending on where we work
-  utility relocations and upgrades in local streets around the rail line
-  major water main works
-  installing large concrete columns, known as piles, that will form the walls of the new rail trench
-  installing critical new rail infrastructure like power, signalling and communications cables underground.



## Phase three

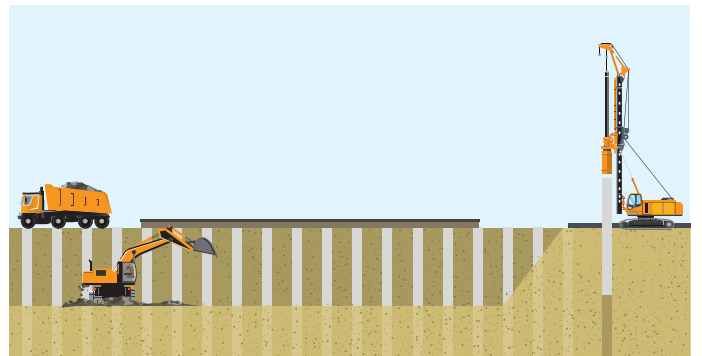
### Removing the level crossing

We'll start a major construction blitz where hundreds of workers will work around the clock to dig the trench and remove the boom gates at Dublin Road. We'll need to shut the rail line for one extended closure to prevent rolling disruptions and ensure the job is done safely and as quickly as possible.

During this time, we'll also need to temporarily close Dublin Road so we can build the new road over the rail trench. The majority of structural works will be completed in this phase.

We'll also:

- build the new Ringwood East Station
- lay the new tracks
- remove the boom gates.



*Diagrams not to scale, for illustrative purposes only.*

## Phase four

### Finishing works

In late 2024 we will add the finishing touches to the new station building, reinstate local roads and car parks and plant new trees, shrubs and plants.

In 2025 locals will be catching the train from the new Ringwood East Station, trains will be running in the new rail trench and cars will be driving safely over it.

Locals can look forward to spending less time stuck at boom gates, and having safer and easier access to public transport, local shops and other services.

## CONTACT US

[contact@levelcrossings.vic.gov.au](mailto:contact@levelcrossings.vic.gov.au)

1800 105 105

Level Crossing Removal Project  
GPO Box 2392, Melbourne VIC 3001

Follow us on social media  
[@levelcrossings](https://www.facebook.com/levelcrossings)



Translation service – For languages other than English, please call 9209 0147.

Please contact us if you would like this information in an accessible format.

If you need assistance because of a hearing or speech impairment, please visit [relayservice.gov.au](https://relayservice.gov.au)