



LEVEL CROSSING REMOVAL PROJECT

A beam being lifted into place on Mont Albert Road

ON TRACK FOR THE BIG DIG

UNION ROAD, SURREY HILLS
AND MONT ALBERT ROAD,
MONT ALBERT
AUGUST 2022

We're getting the job done in Surrey Hills and Mont Albert as we prepare to remove the two dangerous and congested level crossings at Union Road and Mont Albert Road in 2023 by lowering the rail line into an open trench.

These level crossings are two of Melbourne's worst: the level crossing at Union Road was the site of a tragic incident in 2016 that resulted in two fatalities, and there have been at least eight near misses at these crossings since 2005.


We recently completed our winter construction blitz, where we installed six massive bridge beams to help take both roads over the new rail trench.

Construction crews will continue to work relocating utilities, building foundations for the trench walls and installing the first new station buildings ahead of the busy festive season.

Next construction blitz

Our final major construction blitz will start early next year and by mid-2023, the two dangerous and congested level crossings will be gone for good and the new Union Station will be open.

As part of the construction blitz, buses will replace trains on sections of the Lilydale and Belgrave lines from 17 February until late May 2023.

 SIGN UP FOR PROJECT UPDATES
levelcrossings.vic.gov.au



JULY IN NUMBERS

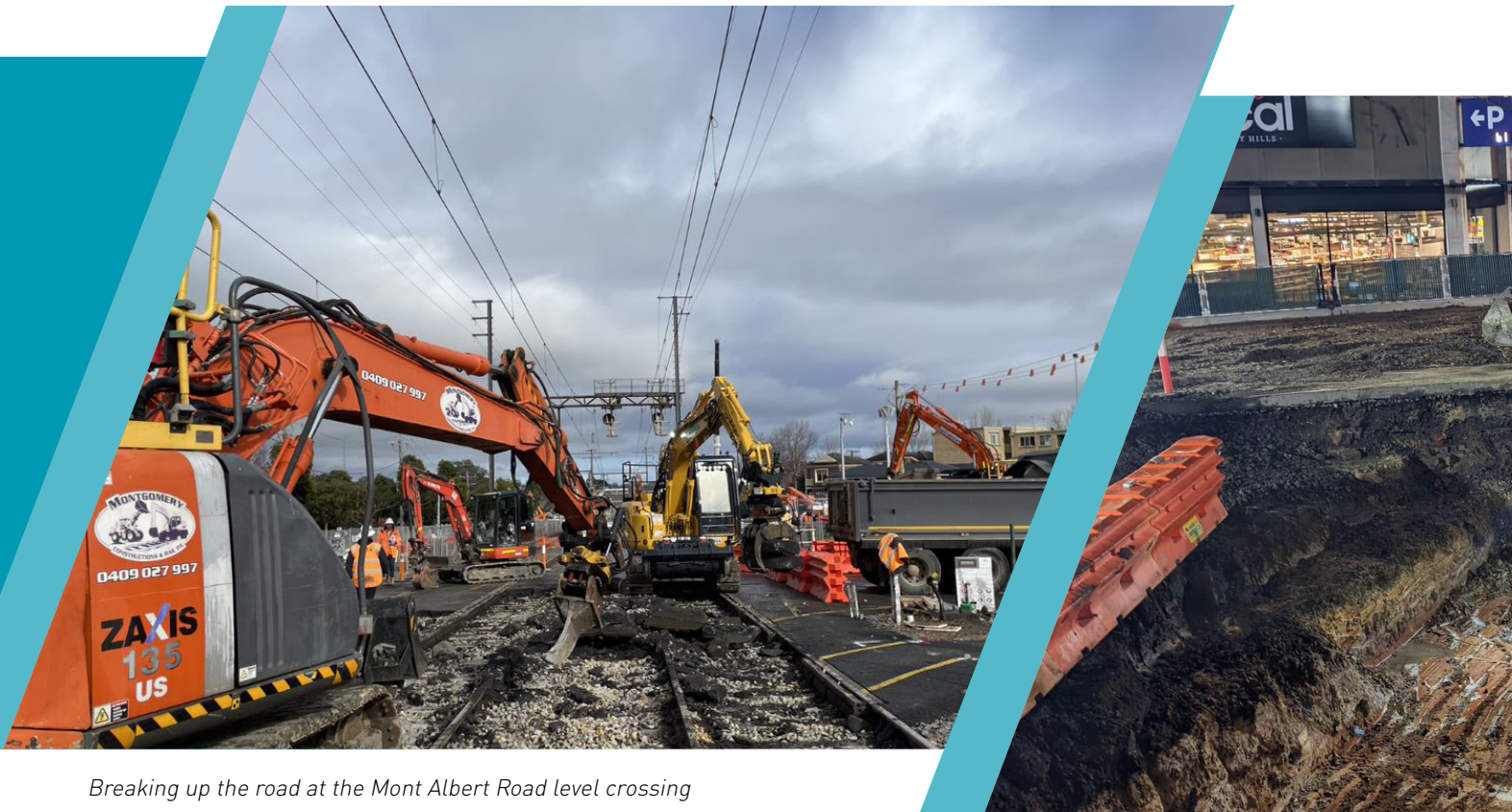
Most of the works completed so far have been below ground, as we prepare to excavate the trench next year.

In our recent 24/7 works we excavated approximately 750 cubic metres of soil to install six large concrete bridge supports that will form part of the two new road connections over the trench.

We also installed massive bridge beams that hold pipes and conduits for underground services like water, gas, electricity, and fibre-optic cables.

Installing these utility beams now means those services won't be affected when we excavate underneath to lower the rail line into a trench beneath the two roads.

PROGRESS IN PICTURES



Breaking up the road at the Mont Albert Road level crossing

Check out these facts and figures that sum up the scale of our winter construction blitz.



Installed 10 steel-reinforced concrete foundations for the trench walls



Installed 6 beams weighing up to 92 tonnes each



1.1km of high voltage services replaced, tested, and switched on



250,000 passengers transported via replacement buses



Beresford Street piling works taking place

Excavating in preparation for bridge support installation at Union Road



Concrete pumping to prepare for the beam lift at Union Road

Piling works continue

Before we build the rail trench, preparation is key to establishing solid foundations. This work, commonly known as piling, is the installation of vertical concrete columns in the ground to form the trench walls.

Piling works are well underway, with multiple piling rigs on site installing foundations for the trench retaining wall.

These rigs will be working to install half of the project's total piles while trains are running, as we prepare to excavate the 1.3km rail trench early next year.

What's coming up

While our winter construction blitz is complete, there is still plenty happening on site for the remainder of the year.

The ongoing works include sewer, power, drainage and gas main relocations and upgrades as well as trench wall construction as we prepare to excavate the trench.

The first prefabricated station buildings will arrive on site in the next few months and will be installed in Lorne Parade Reserve prior to Christmas.

We will also set up an additional storage site at Elgar Park to store small equipment and supplies, ready for the major construction blitz next year.

We have carefully scheduled our work to ensure that we have no planned closures of Union and Mont Albert roads occurring at the same time for the rest of the year.

However, there will be times when there are lane and off-peak road closures.

Bridge beams installed at the Mont Albert Road level crossing



To stay up to date with upcoming works scan the QR code or visit bigbuild.vic.gov.au/disruptions/mont-albert-disruptions



Relocation of communication cables along the rail line earlier this year





Breaking back piles for bridge foundations at Union Road

STAY UP TO DATE

To receive updates on the works being carried out, sign up to our email or text message subscriber lists.

To register for text message updates text 'UMA' to 0459 067 028.



Sign up to our email updates by scanning the QR code or visiting bigbuild.vic.gov.au/projects/level-crossing-removal-project/subscribe



A beam arriving on Union Road





Watermain installation in Lorne Parade Reserve

SUPPORT YOUR LOCAL TRADERS

As part of our ongoing trader support program, we've launched a new loyalty program called Stamp Me, which rewards residents and visitors for shopping with Mont Albert Village and Union Road traders.

The program, which launched in early July, already has more than 1,100 users stamping and redeeming vouchers at more than 40 local traders.

Signing up is easy, download the Stamp Me app and click the '+' icon to search for Mont Albert Village Traders and Union Road Surrey Hills.

Download the **Stamp Me app** by scanning the QR code or searching 'Stamp Me' in the App Store or Google Play.



Project timeline

- ✓ **Early 2021**
 - First phase of community consultation completed
- ✓ **Mid 2021**
 - Updated designs released
 - Ongoing community engagement
 - Design enhancements released
 - Contract award announced
 - Early works begin
- **Early 2022**
 - Major construction begins
 - Final designs released
- **2023**
 - Level crossings gone for good
 - New station open
 - Landscaping works

The timeline above is subject to change.



Crews removing high voltage wires

CONTACT US

contact@levelcrossings.vic.gov.au
 1800 105 105
 Level Crossing Removal Project
 GPO Box 2392, Melbourne VIC 3001

Follow us on social media
 @levelcrossings



Translation service – For languages other than English, please call 9209 0147.

Please contact us if you would like this information in an accessible format.

If you need assistance because of a hearing or speech impairment, please visit relayservice.gov.au