



# LEVEL CROSSING REMOVAL PROJECT

Above: Mentone Station forecourt - artist's impression only

# WORKS TO START IN MENTONE

MENTONE

ISSUE #4 - MARCH 2019

## Boom gates gone in 2020

Construction to remove the level crossing at Balcombe Road in Mentone will start soon, with the level crossing gone for good by late 2020. This dangerous and congested level crossing will be removed by lowering the rail into a trench underneath the road.

The Victorian Government is removing 18 dangerous and congested level crossings on the Frankston line, including at Charman Road and Park Road in Cheltenham and at Balcombe Road in Mentone.

Currently 38,000 vehicles use these level crossings each day.

We have been listening to the community since we shared early designs in 2016. Key features of the updated design include:



A new station with forecourt seating, open space and landscaping



The opportunity for the existing heritage station buildings to become the focal point of a larger community garden



A new 'heritage bridge' with community space over the rail line



The ability to run more trains, more often, by connecting the third track to the main line at Cheltenham



Improved connections with the shopping precinct



New 3.5 kilometre long bicycle and pedestrian path

Find out more information inside about your new station precinct.



SIGN UP FOR PROJECT UPDATES  
[levelcrossings.vic.gov.au](http://levelcrossings.vic.gov.au)

Authorised and published by the Victorian Government, 1 Treasury Place, Melbourne

VICTORIA'S  
BIG BUILD

VICTORIA  
State  
Government



# YOUR NEW STATION

Our team has been working on the designs for the new Mentone Station precinct since we shared early concepts with the community in 2016. Community and stakeholder feedback has resulted in some key changes to the design.

- The new station will be 150 metres south of its current location, connecting the shopping precinct and bus interchange, and providing safer access across the rail line and through the station precinct.
- The new station will have forecourt seating and open space, landscaping, kiss and ride car bays and additional bicycle parking in Parkiteer cages and bicycle hoops.
- A new 'heritage bridge' will be built, connecting the refurbished heritage station buildings and creating a new community space over the rail line.
- A new 3.5 kilometre long bicycle and pedestrian path run from Heather Grove in Cheltenham to Warrigal Road in Mentone
- The station will seamlessly connect with Mentone Renaissance project, and creates the opportunity for the existing heritage station buildings to become the focal point of a larger community garden



Mentone Station entry- artist's impression only

## Protecting heritage buildings and gardens

We know that the heritage-listed station buildings and gardens at Mentone are loved by the local community.

We will carefully move the two station buildings off-site before main construction gets underway, refurbish them and return them to their current locations when work is complete. We will be seeking your suggestions on potential uses for the buildings.

Five heritage-listed trees in the station gardens, the Norfolk pines

and the palm trees, will be protected on-site during works. They will form the centrepiece of a larger station garden that will include a 'heritage bridge' across the rail line between the two station buildings. We will seek community input on landscaping opportunities.



Looking towards the 'heritage bridge' - artist's impression only



**Car parking**

You have told us that station car parking is important. The 272 car spaces currently available will be retained either in the station car park, or nearby.

## Better pedestrian connections

We are creating a new 3.5 kilometre pedestrian and bike path along the rail line from Heather Grove, Cheltenham to Warrigal Road, Mentone. This will provide safer and more convenient access for the community, whether you are out for a stroll, walking the dog, or cycling to school, work or the shops.

By refining the design we no longer need pedestrian overpasses near Patty Street, Mitchell Street and Cremona Street.

The existing Patty Street and Cremona Street pedestrian crossings will be upgraded with safety gates to bring them up to modern standards. There will be access across the rail line via the station precinct near Mitchell Street.

There will be easy pedestrian access through the new station precinct across the rail line. This will connect with the new pedestrian-friendly 'triangle site' as part of the Mentone Renaissance project.



Mentone Station aerial view - artist's impression only





# What to expect during works

Early works at Mentone will involve confirming the location of electricity, gas, water and telecommunications services that need to be relocated during major works. These investigations will continue until April.

Major construction will begin in mid 2019, the level crossings will be gone for good and two new stations will be open by late 2020. This will involve a series of weekend rail line closures, and one extended closure in mid 2020 when we dig the trench under Balcombe Road and re-build the road over the trench.

During construction you can expect:

- Changes to the way you access the areas around the rail line and station precinct

- rail and car park closures. We will provide temporary alternative parking nearby.

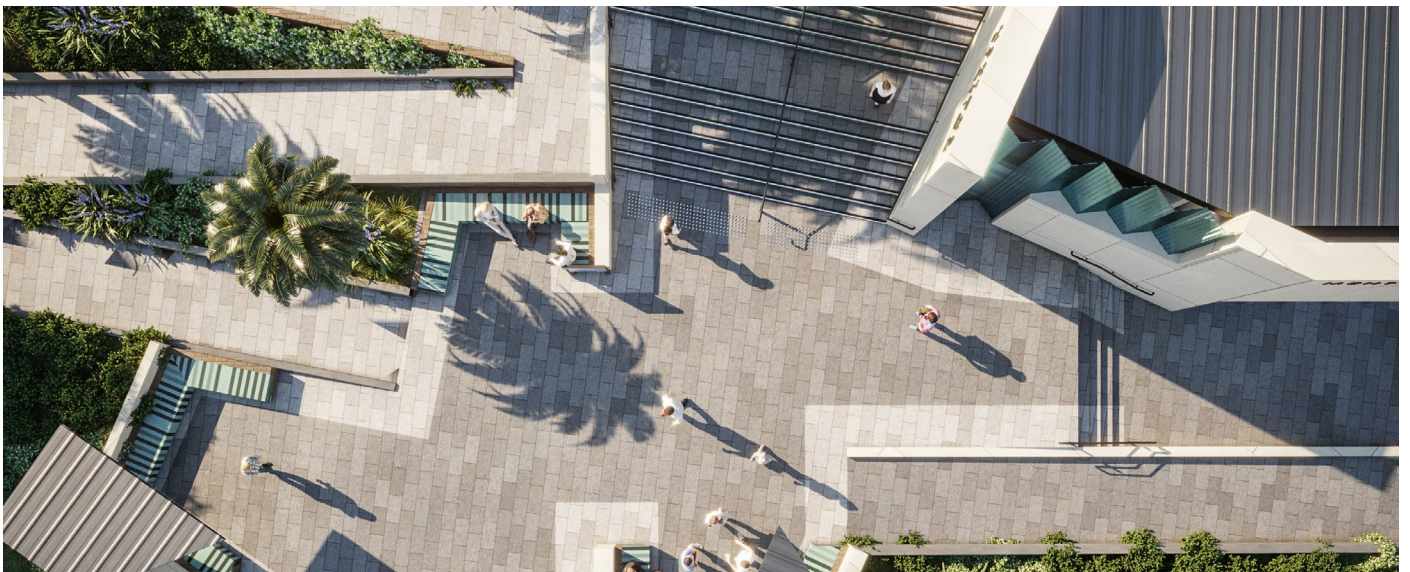
The existing path that runs along the rail line between Salmon Street and Balcombe Road will be closed for periods during construction. We will keep you informed about detours.

We have a dedicated team that will be working with the community and rail passengers to keep you informed about what's happening during construction.

**Buses will replace trains when we close the rail line. Further details will be available closer to the time.**



*Mentone Station platforms - artist's impression only.*



*Mentone Station aerial view - artist's impression only.*

## How we'll keep you informed

We will be out and about in the local community soon to talk with you about this project, answer your questions and seek your feedback on areas such as landscaping, and the potential uses of the heritage listed Mentone station buildings.

- Come and talk to us at our Mentone Info Hub at 116 Balcombe Road, Mentone, opening in May 2019. We will be hosting special events and walking tours during construction
- We will be providing works alerts and doorknocking local homes and businesses and working closely with

them – this includes our 'open for business' program for local traders

- We will provide regular newsletter updates, that will be delivered to local homes and businesses and available online
- Registering for email updates is the easiest way to stay up to date on all project information. Visit [levelcrossings.vic.gov.au/projects/balcombe-road-mentone](https://levelcrossings.vic.gov.au/projects/balcombe-road-mentone)
- And if you've got questions, find us via the details on the back page.



# Community reference groups

We have formed two community reference groups, one in Cheltenham and one in Mentone, to help us keep the community informed in the lead up to and during works. These groups comprise residents and representatives from local community groups.

We have also established a trader reference group that we will work with to seek feedback on how best to support traders during construction and how to minimise the impacts of construction on local businesses.

In Mentone we also have a dedicated school reference group to make sure we understand the specific needs of the busy local school community.

For more information on the groups and their members, visit our website at [levelcrossings.vic.gov.au/projects/balcombe-road-mentone](http://levelcrossings.vic.gov.au/projects/balcombe-road-mentone)

## Project timeline

- ✓ **Ongoing to March 2019**  
Geotechnical investigations at Cheltenham and Mentone
- ✓ **March 2019**  
Final designs released
- **April 2019**  
Site set up, service proving and enabling works begin at Cheltenham and Mentone
- **Mid to late 2019**  
Major construction begins at both sites
- **2020**  
Rail line closed to excavate trench  
Build new station  
Construct bridge over Balcombe Road  
New Mentone Station opens
- **2021**  
Project completion

\* Please note that the timeline above is subject to change.

Artist impression: Mentone Station gardens



## CONTACT US

contact@levelcrossings.vic.gov.au  
1800 105 105  
Level Crossing Removal Authority  
GPO Box 4509, Melbourne VIC 3001

Follow us on social media  
[@levelcrossings](https://www.facebook.com/levelcrossings)



Translation service – For languages other than English, please call 9280 0780.

Please contact us if you would like this information in an accessible format.

If you need assistance because of a hearing or speech impairment, please visit [relayservice.gov.au](http://relayservice.gov.au)