



Works notice

La Trobe Street eastbound closure

Commencing September 2023

Construction of the Metro Tunnel Project's new State Library Station is entering a new phase, including works on the main above ground entrance and fit-out of the underground station. To carry out these works safely, a long-term closure of La Trobe Street eastbound, between Elizabeth and Swanston streets, will take place.

What we are doing

Above ground station entrance works have commenced with all twelve entrance columns now standing, and the first three overhead beams installed.

When State Library Station opens in 2025, the station entrance will lead into an expansive underground passenger foyer, with lifts and escalators transporting passengers down to the customer and ticketing area, towards the train platforms.

To support a program of critical works, a long-term eastbound closure of La Trobe Street, directly adjacent to the work site, will commence in early September.

Key activities taking place during this closure include:

- Installing the remaining overhead beams which form the station entrance
- Demobilising the tower crane
- Fitting out the seven-storey deep underground station
- Waterproofing and service works
- Tram pole relocation
- Reinstating the kerb and gutters
- Landscaping.

What to be aware of

- During the closure there will be no through access for motorists or cyclists travelling eastbound between Elizabeth and Swanston streets
- Motorists travelling eastbound on La Trobe Street will need to detour via Lonsdale Street (please refer to map)
- Cyclists travelling eastbound on La Trobe Street will need to detour via Little Lonsdale Street (please refer to map)
- There will be no additional impact to pedestrian movements in the area
- Tram services along La Trobe Street will not be impacted
- Pedestrian access to the eastbound tram stop near the La Trobe Street and Swanston Street intersection will be maintained at all times
- Traffic management will be in place to safely guide pedestrians, cyclists, and motorists around the work area
- Local vehicle access for businesses and residential buildings, including the Melbourne Central carpark, will be maintained at all times.

When

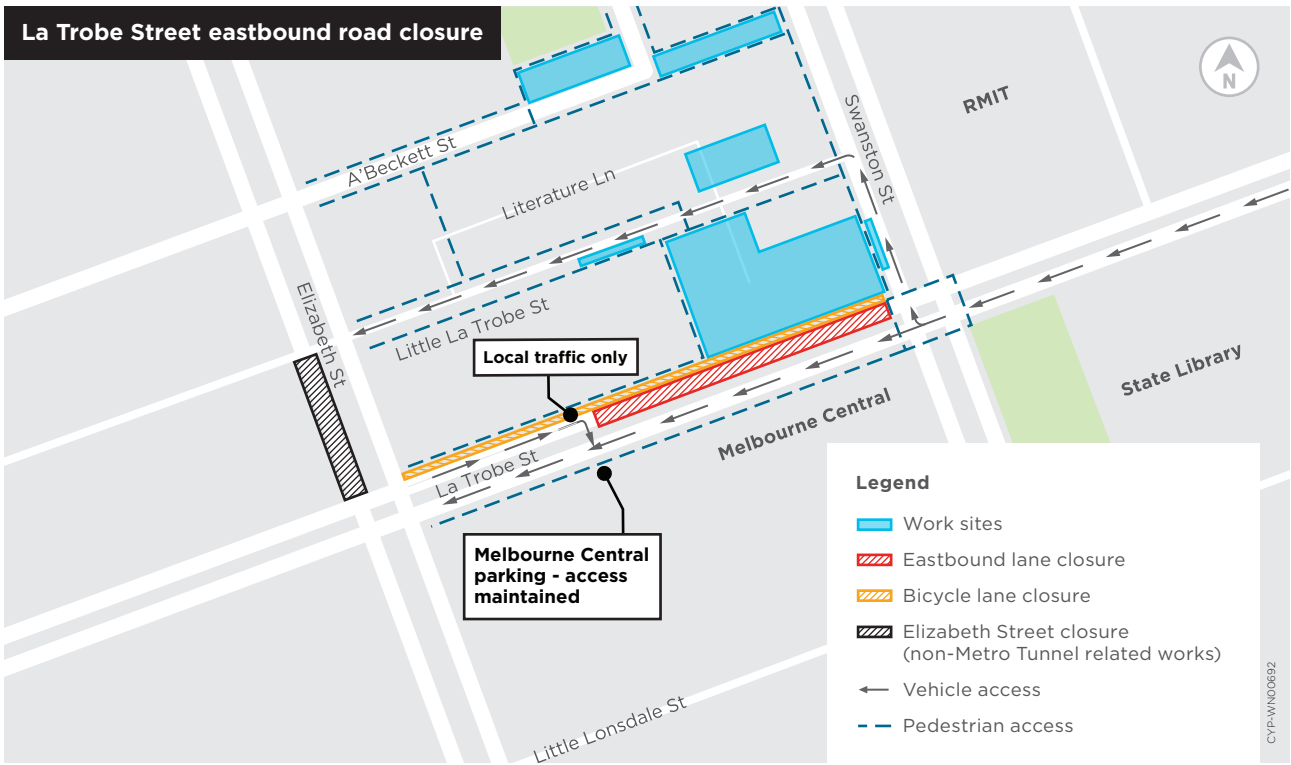
- 10pm Monday 4 September 2023 for up to twelve months.

Construction partner:

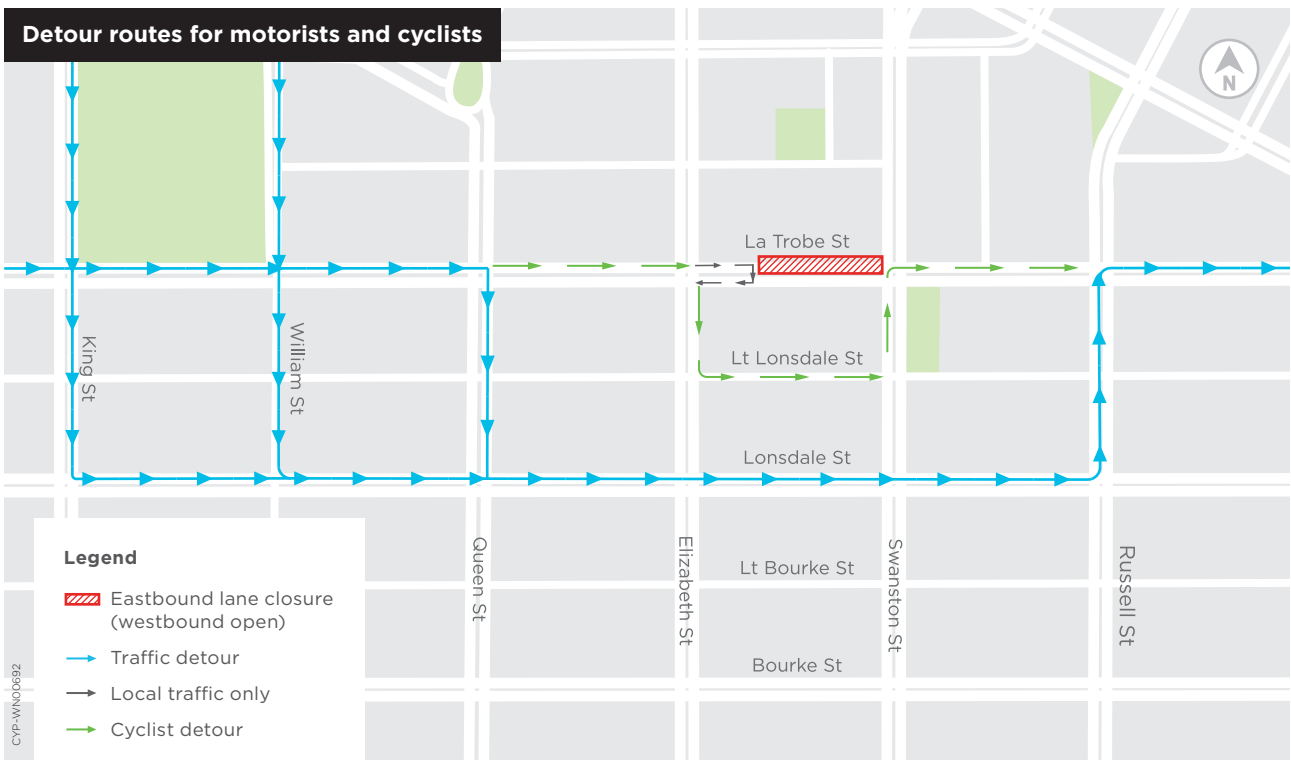


Cross
Yarra
Partnership





Indicative Only



Indicative Only

Stay updated on Victoria's Big Build

With our state's population projected to reach 10 million by 2051, Victoria's Big Build is delivering the rail and road projects that will keep Victorians moving in the decades to come.

As a result, there will also be other works occurring across our public transport and road networks.

Before you travel, check out Victoria's Big Build disruptions map at bigbuild.vic.gov.au/disruptions to see works in your area.

About the future State Library Station

Opening in 2025, the new State Library Station is one of five new stations being built as part of the Metro Tunnel Project. It will improve access to some of Melbourne's most popular destinations including the State Library of Victoria, RMIT University, and the Queen Victoria Market.

This seven-storey underground station will be located at the northern end of Swanston Street, between La Trobe Street and Franklin Street.

Passengers will be able to access the station via three entrances:

- At street level, the main entrance will be located on the corner of Swanston and La Trobe streets (concept image below)
- A second above ground entrance will be located on the corner of Franklin Street and Swanston Street, between RMIT and Melbourne City Baths

- There will also be an underground passenger connection between State Library Station and Melbourne Central Station, allowing passengers to conveniently interchange between Metro Tunnel and City Loop train services without having to touch off and on again

Surrounding streets will also be revitalised to provide better spaces for pedestrians, cyclists and the area's growing residential community.

To find out more about State Library Station, visit bigbuild.vic.gov.au/projects/metro-tunnel/stations/state-library



Concept image of State Library Station's main entrance on the corner of Swanston and La Trobe streets.

About the Metro Tunnel

The Metro Tunnel will create a new end-to-end rail line from Sunbury in the west to Cranbourne and Pakenham in the south-east, with high capacity trains and five new underground stations at Arden, Parkville, State Library, Town Hall and Anzac.

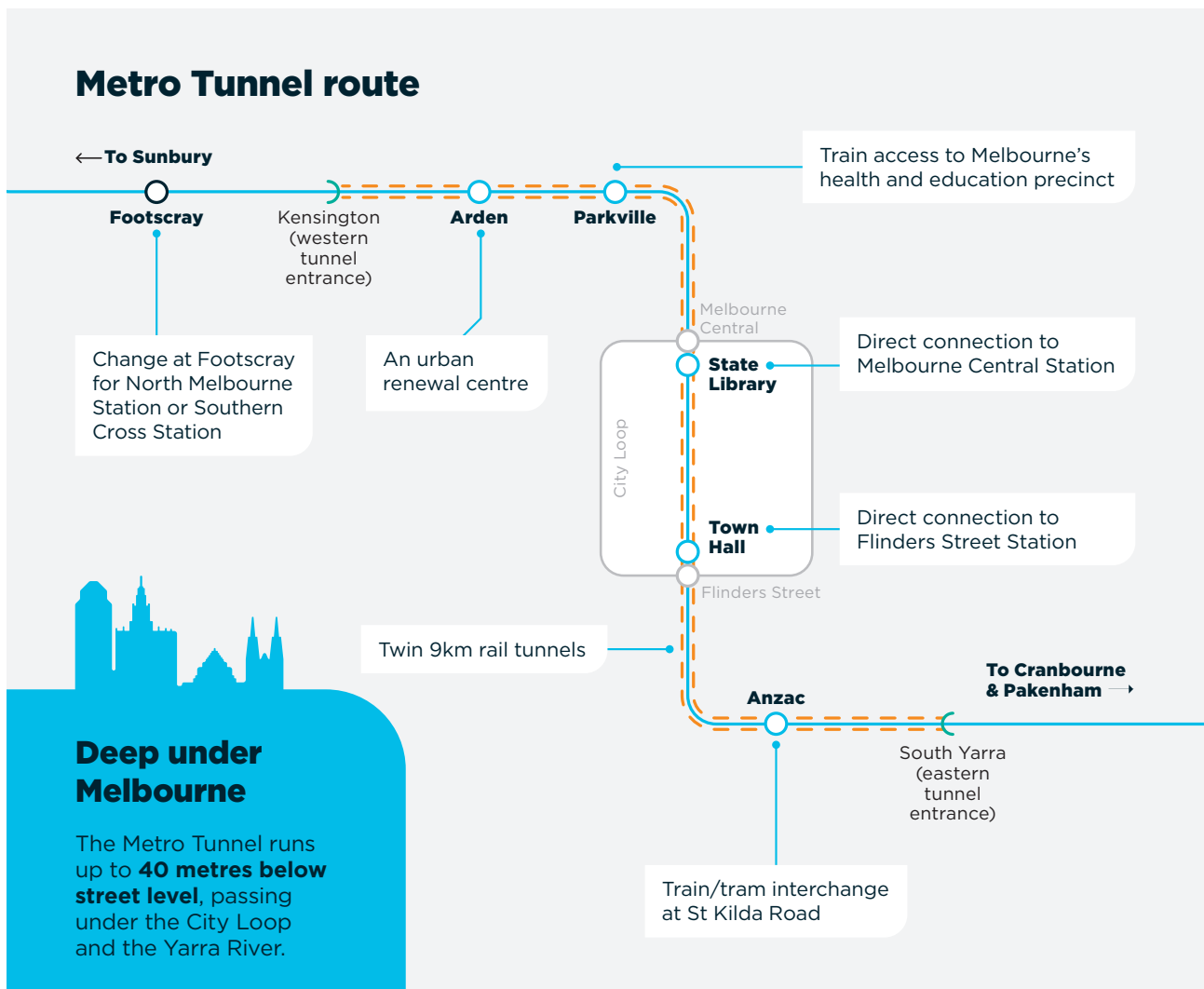
It is the first step towards a metro-style rail network for Melbourne, with turn-up-and-go rail services that are the hallmark of the world's great cities.

The Metro Tunnel will transform Melbourne's train network, delivering more trains to and from the suburbs and slashing travel times by up to 50 minutes a day.

It will give Victorians rail access to Parkville's medical and education precinct and the St Kilda Road employment hub for the first time, and will include Melbourne's first tram/train interchange.

Opening in 2025, the Metro Tunnel will also pave the way for future expansion of Victoria's public transport network and help to maintain Melbourne's status as one of the world's most liveable cities.

To find out more about the Metro Tunnel, visit metrotunnel.vic.gov.au



More information

metrotunnel.vic.gov.au

1800 105 105
(24 hours a day, 7 days a week)

Rail Projects Victoria
PO Box 2392, Melbourne, VIC 3001

 Interpreter Service (03) 9209 0147

It should be noted that this information is current at the time of printing, however due to unforeseen circumstances, changes may occur. Please visit railprojects.vic.gov.au for the latest updates.