



STATE LIBRARY STATION COMMUNITY REFERENCE GROUP

Kate Walshe, Communications and Stakeholder Engagement Director, CYP D&C

Melinda Kelly, State Library Station Stakeholder Engagement Manager, CYP D&C

Terese Scalise, Communications and Stakeholder Engagement Director, CYP PCO

24 July 2023



Agenda



1. Precinct Update
2. State Library Station Update
3. Creative Program Update



Precinct Update

Precinct Updates



Arden



Parkville



State Library



Town Hall



Anzac



Rail Tunnel Fitout



State Library Station Update

State Library Station

La Trobe Street site



State Library Station

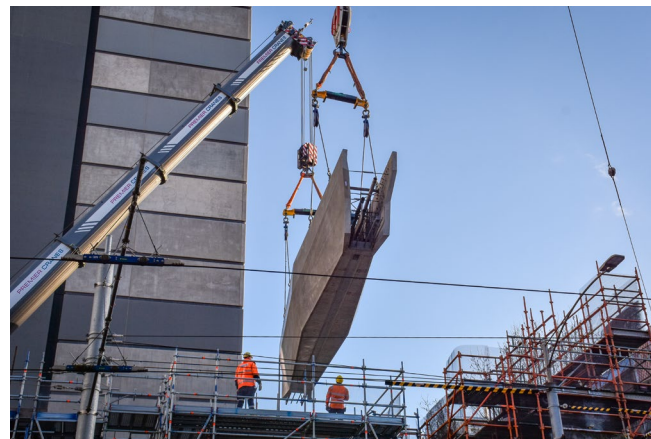
La Trobe Street site



OFFICIAL: Sensitive

State Library Station

La Trobe Street site



State Library Station

La Trobe Street site



State Library Station

La Trobe Street site



Station entrance and aboveground

Beam delivery & installation, column construction, precast panel installation:

- All 12 columns have been poured
- Core walls complete
- First 3 portal beams (of a total of 6 beams) delivered and installed
- Demobilising scrubber shed
- Beams will be filled in ready for planks which will be installed over the beams
- Temporary deck removal.

Melbourne Central escalator installation

At future underground passenger connection between Melbourne Central Station and State Library Station:

- Escalator 1 of 2 has been installed. Fit out continuing
- Hoarding for escalator 1 has been relocated with Melbourne Central escalator back in operation
- Escalator 2 slab removal works are starting
- Escalator 2 installation will commence end of September/early October.

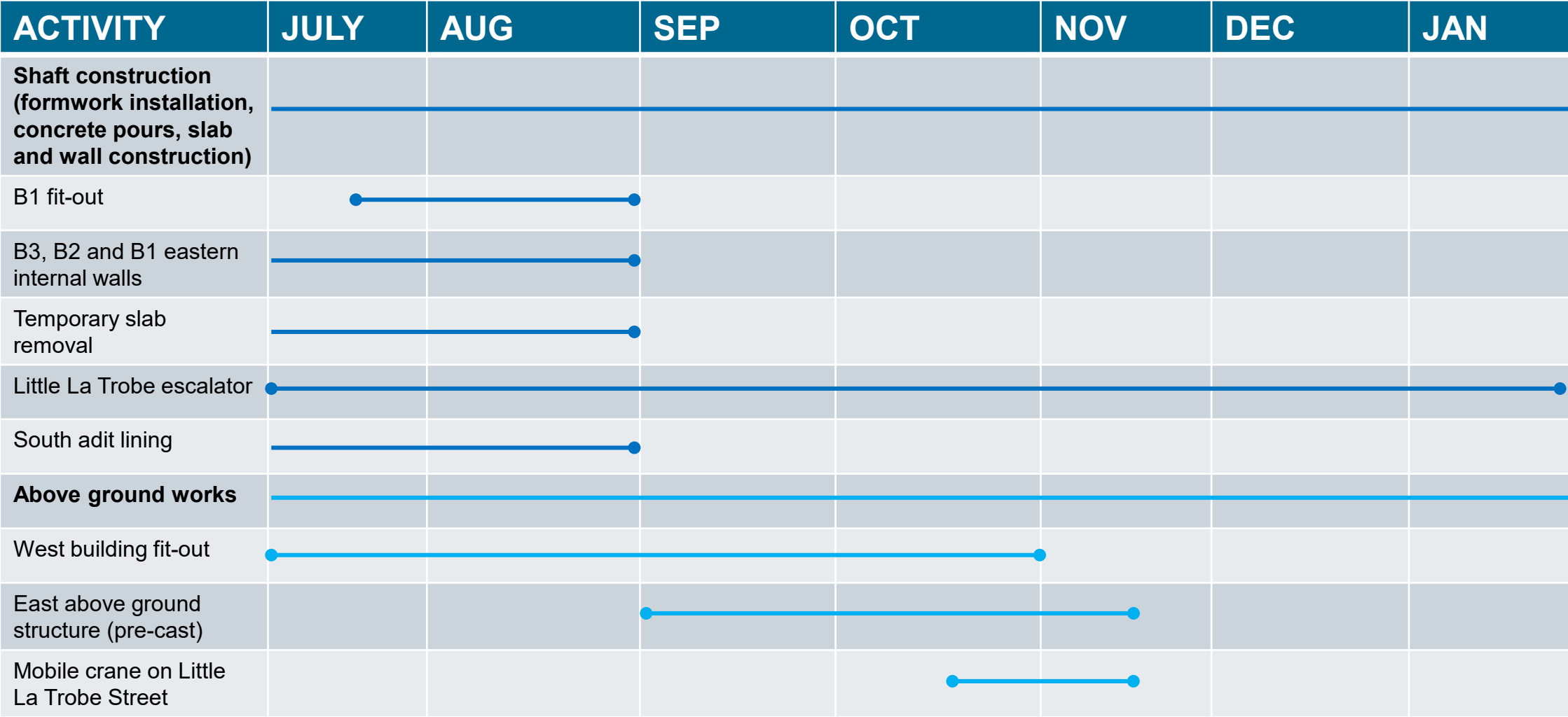
State Library Station

Little La Trobe Street site



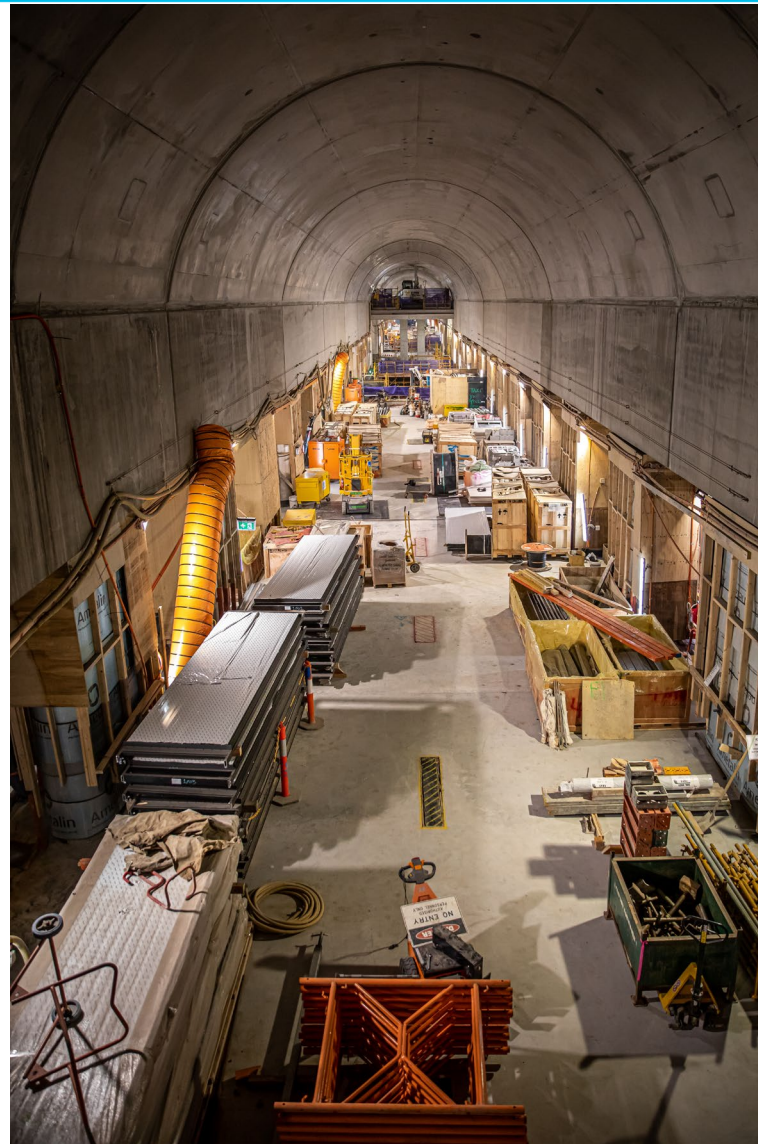
State Library Station

Little La Trobe Street site



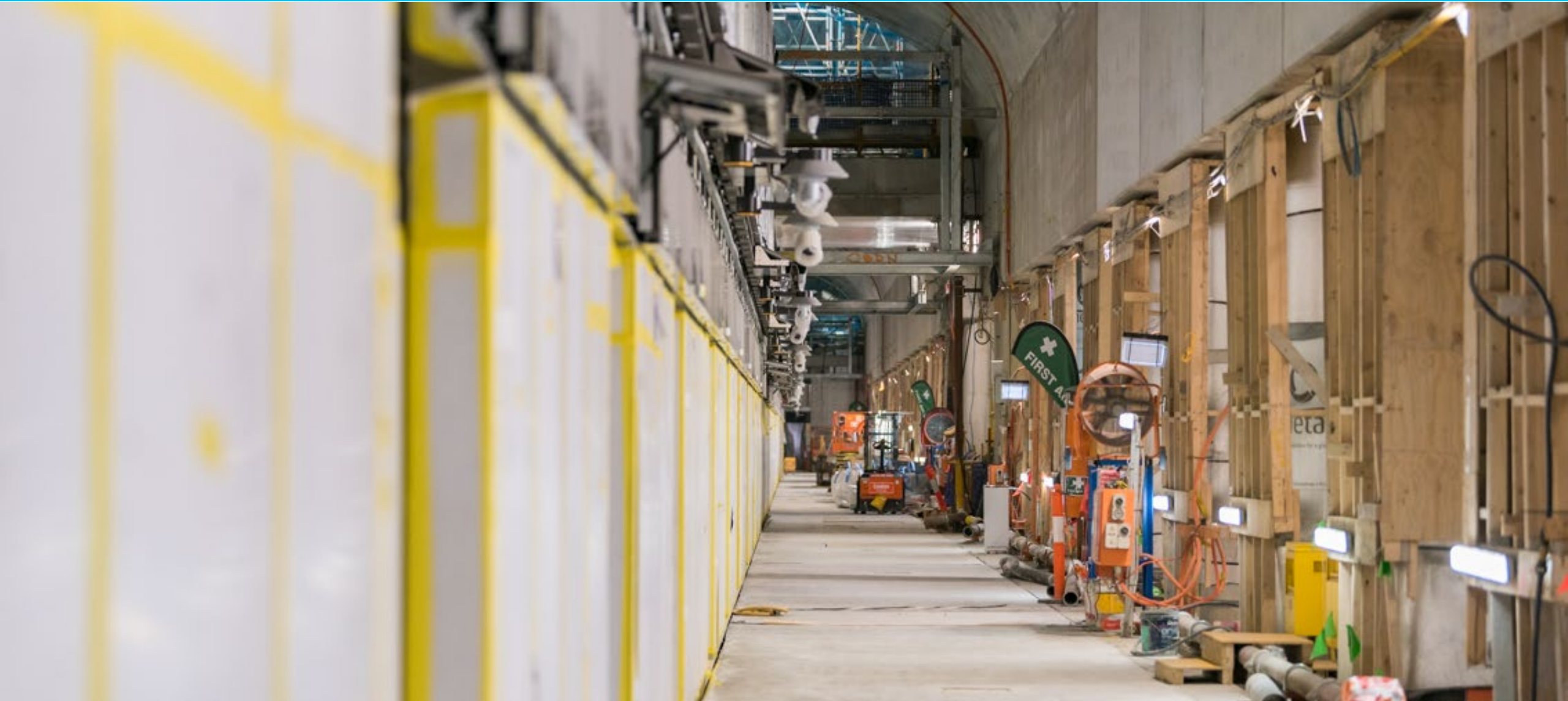
State Library Station

Franklin and A'Beckett Street sites



State Library Station

Franklin and A'Beckett Street sites



State Library Station

Franklin and A'Beckett Street sites



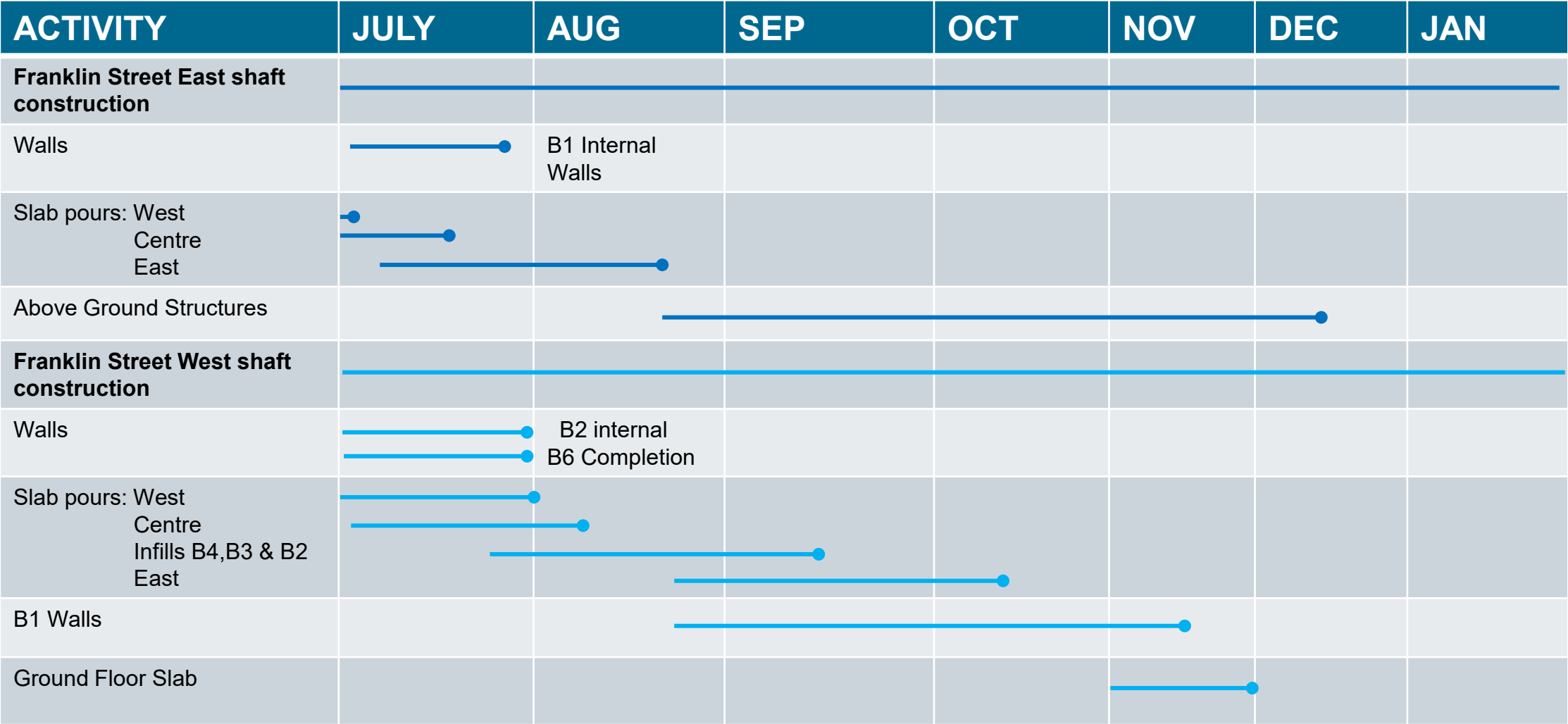
State Library Station

Franklin and A'Beckett Street sites



State Library Station

Franklin East and Franklin West sites



A'Beckett Street site



ACTIVITY	JULY	AUG	SEP	OCT	NOV	DEC	JAN
A'Beckett Street shaft construction							
Walls		B4 lining	B4 internal				
Slab pours			B3 slab				
Strut removal				Strut 5/4/3			
B3 Lining walls					B3 lining		
Structures and lining							
Cavern							
Adits							
Platform rail tunnel							

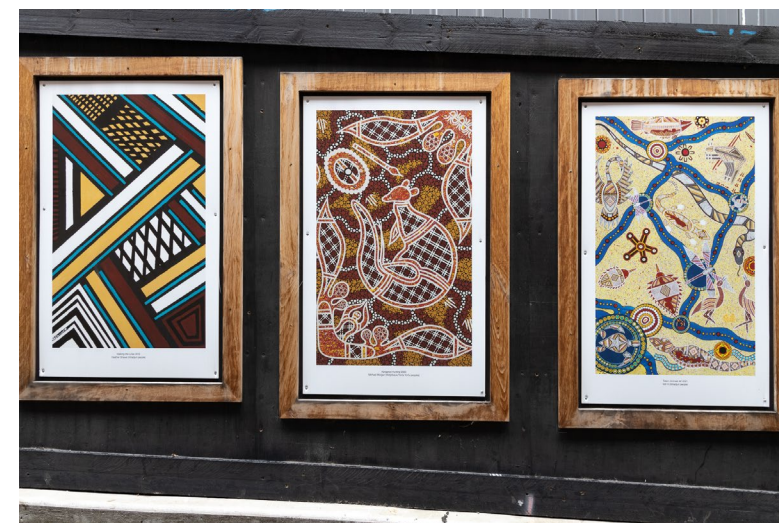
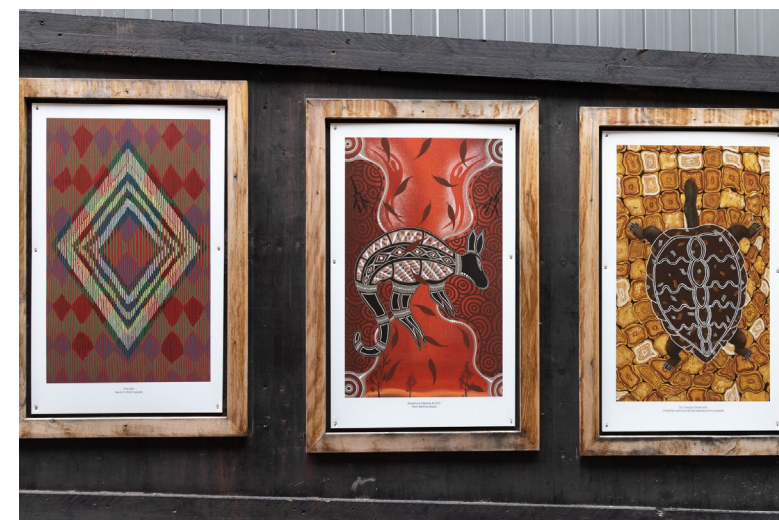
Questions



Creative Program Update State Library Station

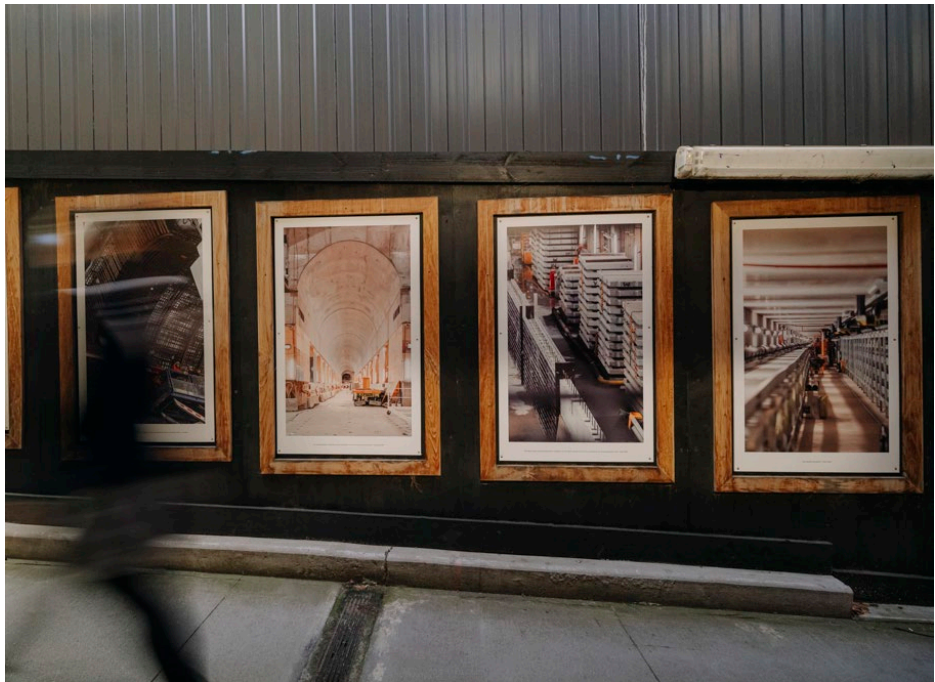
Artworks by the Torch

Franklin Street frames, July



OFFICIAL: Sensitive

Franklin Street uplift: relocation of 100 Feet Under the Street images



RMIT x NOLA x MTCP



- Supporting **RMIT Campus Fest**,
11am-3pm, on Thursday 20 July
- Theme of our activation is
'wellbeing' - games,
photobooth, food and more
- Supporting **RMIT Open Day**, on Sunday 13 August
- Similar to previous years – DJ and coffee cart



Questions