

Progress in Cheltenham

Site investigations are continuing in Highett and Cheltenham to help prepare the area for early construction in 2024. This will include moving services such as water, sewer, power and gas to pave the way for the new SRL station and twin tunnels.



Connecting suburbs.
Creating jobs.

Cheltenham

September 23 | Newsletter

SRL powering ahead

Construction of Suburban Rail Loop (SRL) East is powering ahead, with trains running by 2035 – slashing travel times, easing congestion and creating thousands of jobs.

SRL East from Cheltenham to Box Hill will deliver six brand new underground stations, opening up access to health, education and employment destinations across Melbourne's east and south east.

As our city grows, the public transport network will need to support an additional 11 million trips a day, with 19 million extra trips on our roads.

Building SRL East is creating up to 8,000 jobs, with 14 per cent of hours on early construction being worked by apprentices, trainees and cadets, with fantastic opportunities for women, Aboriginal and disadvantaged Victorians.

SRL will not only ease pressure on our roads and public transport, it will help reshape how and where we grow in the decades ahead. Through careful planning and investment around each station, SRL will bring more jobs, greater housing choices and opportunities to our middle suburbs.

Benefits for Cheltenham



Better train connections for local residents.



Almost 8,000 people will use the SRL station at Cheltenham every day.



Cheltenham to Monash University **in 10 minutes.**



Cheltenham jobs are set to **double by the 2050s.**



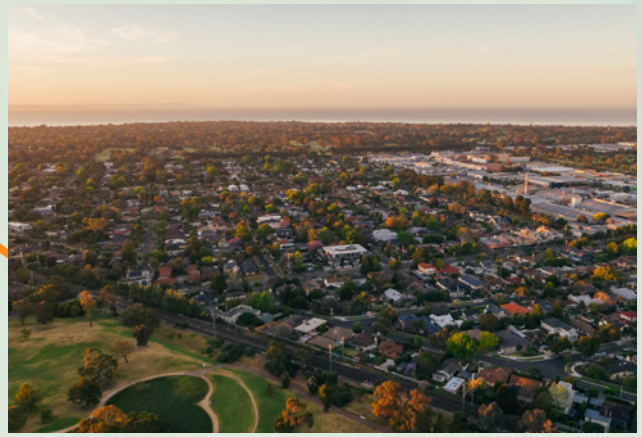
Construction of SRL will **support up to 24,000 jobs.**



Get involved

SRL is more than a rail line. It will also help shape the future of the neighbourhoods around each station. We are working closely with the local community every step of the way throughout the planning process. Find out how you can get involved.

Cheltenham, What's your vision?



SRL is more than a rail line – the areas around the new stations will be thriving communities with better public transport options, making them even more attractive places to live, work and study. SRL will deliver more diverse and affordable housing options, as well as opportunities for businesses and jobs in the neighbourhoods around the new stations. New community infrastructure such as schools, parks and playgrounds will support local living.

We've been talking to local residents, businesses and stakeholders for several years about what people value most about their areas. Building on these conversations, we've released the SRL Precincts Discussion Paper and are inviting people to share their vision for the future of these growing areas.

Opportunities in Cheltenham could include establishing a new town centre around the SRL station; well-designed public spaces with better

walking and cycling facilities; building on creative industries; attracting new employment, arts and cultural opportunities; and introducing a diverse range of affordable housing for more families to live closer to parks, jobs and services.

We want to hear what you think about the opportunities in Cheltenham and the priority areas we should focus on as we plan for the future. Your feedback from the SRL Precincts Discussion Paper will help inform the formal planning process for the broader areas around the SRL East stations.

To find out more and share your vision, visit engage.vic.gov.au/precincts-discussion-paper



Scan the QR code on your smart phone to sign up to our eNews.

Melbourne is growing

Within a decade, Melbourne is expected to officially overtake Sydney as Australia's largest city. By the 2050s, we'll have a population of around 9 million. We need to plan ahead.

SRL is a generational investment in the future of our city and state. As well as the extraordinary benefits to the economy, to our transport network, to the environment and to making easy and fast journeys across our city and state – it's also about the quality of life the next generation of Victorians will enjoy, and their access to affordable housing, healthcare and employment.

Over decades, SRL will help change the form of Melbourne, attracting new businesses and housing where people want to live – right near great public transport. It'll support the vibrancy, safety and greenery of these areas, through careful urban planning, more

retail and hospitality, more trees and great open spaces in the broader areas around the new stations.

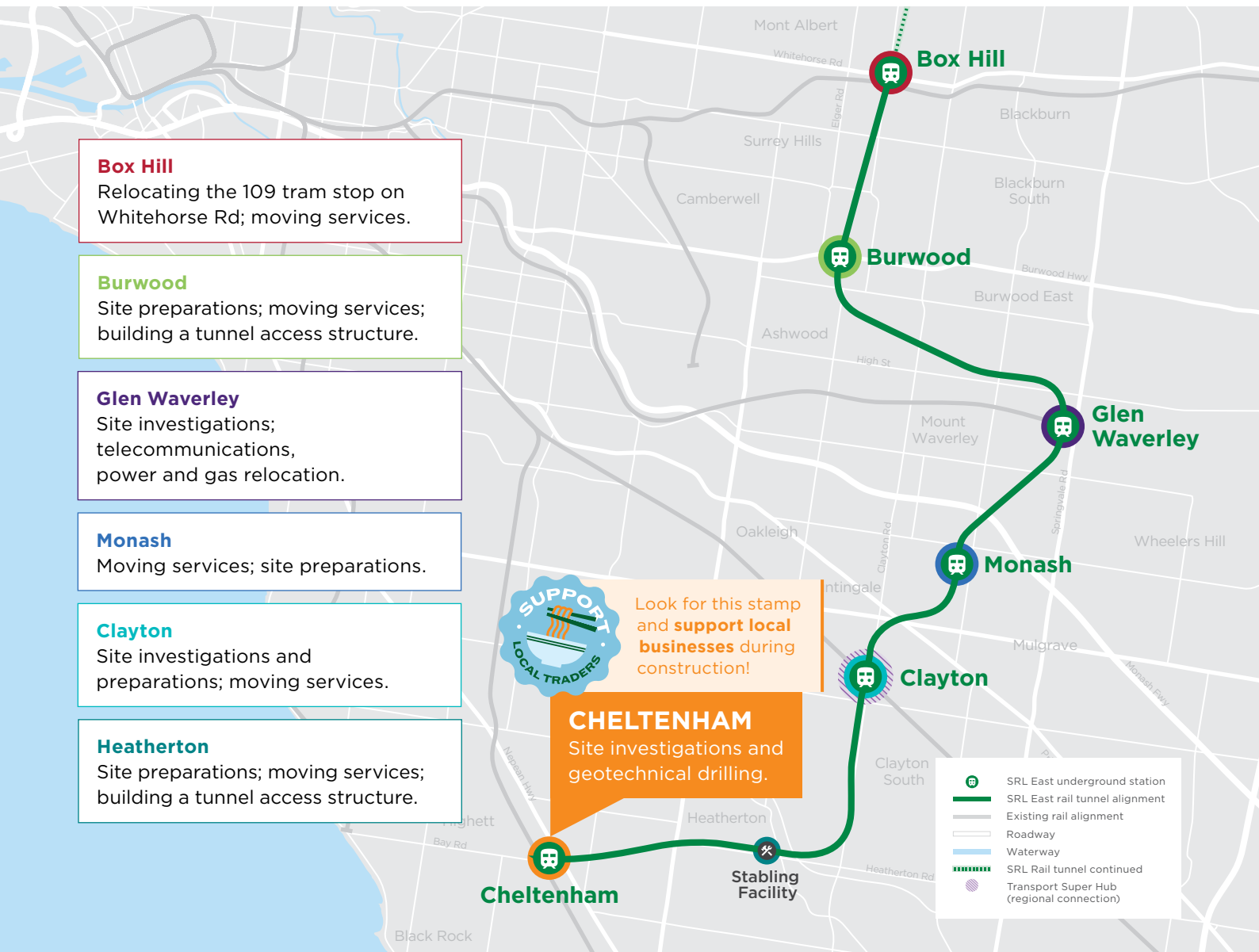
This year, structure planning for these 'SRL Precincts' gets underway, which is why we invite you to share your vision. There will be many other opportunities to share your feedback with us throughout the process.

SRL East communities – Cheltenham, Clayton, Monash, Glen Waverley, Burwood and Box Hill – are already thriving places, rich in history and character. Planning for the future now will help safeguard what you love about your area and support liveable, walkable and sustainable communities for future generations.

To hear about local's construction updates and disruptions, text **CHELtenham** to **0429 469 592**.

What's happening near you in 2023

It's a big year for SRL East. Take a look at the construction work planned for your local area.



Works being delivered this year



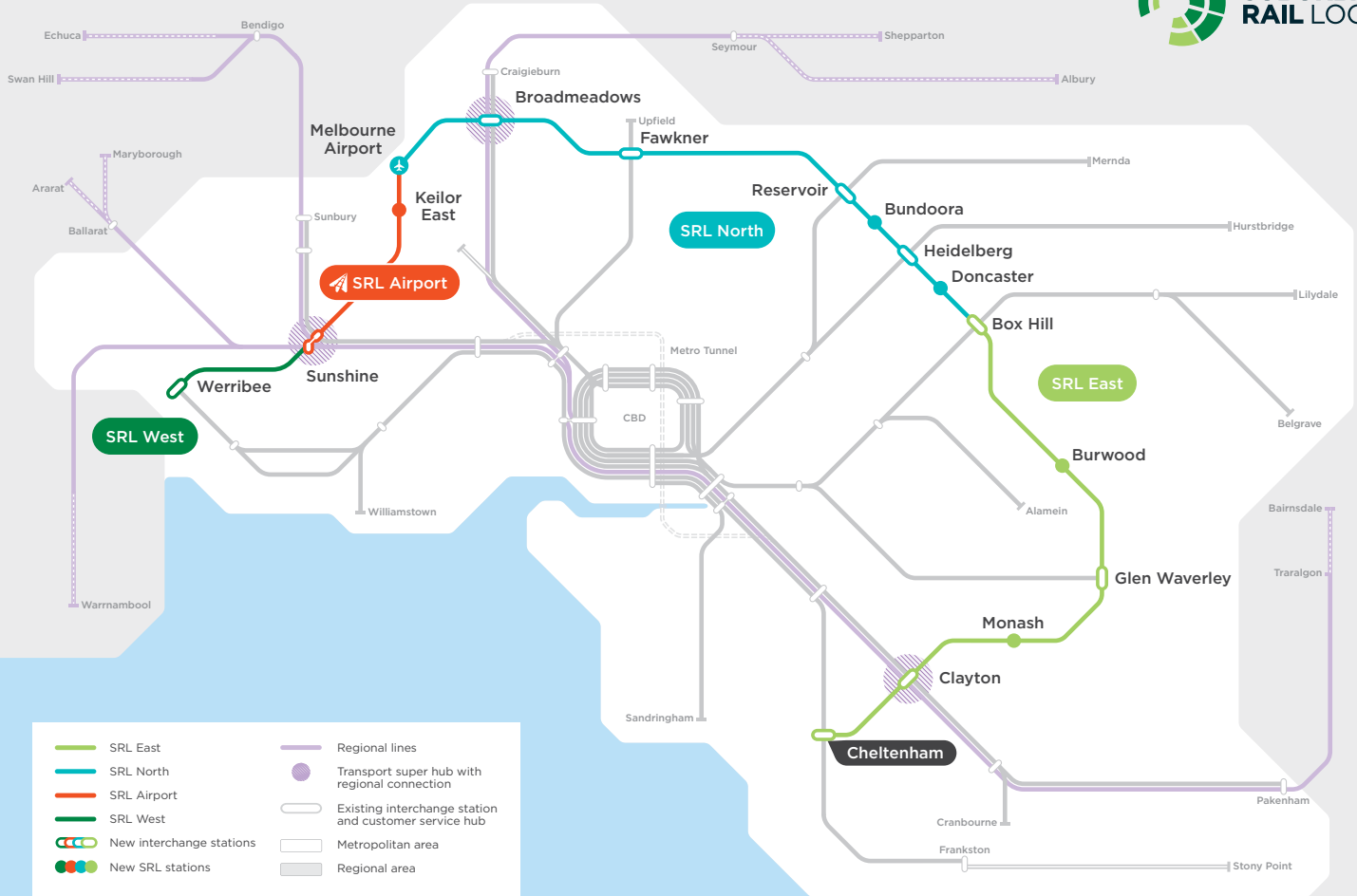
The new underground station at Cheltenham will be the southern gateway to the SRL network – providing faster and more convenient public transport to one of Melbourne’s major retail and entertainment hubs, and a convenient connection for Frankston line passengers to Monash, Deakin and La Trobe universities.

Early works will kick off in Cheltenham in 2024 to move underground services. To prepare for these works, we have helped move the Kingston Farmer’s Market to a new home in the Kingston Heath Reserve – including a vibrant new artwork by Melbourne artist Angharad Neal-Williams.

Thank you for your cooperation during these works.

Scan the QR code to find out more about works planned for Cheltenham.





SRL is creating a long pipeline of jobs and opportunities. For more details go to suburbanrailloop.vic.gov.au/jobs

Work is progressing on Suburban Rail Loop and 2023 is the project's busiest year yet. We have translated this newsletter into other languages to keep everyone updated about Suburban Rail Loop news.



Scan the QR code on your smart phone for more information or go to our website.

郊區鐵路環線 (SuburbanRailLoop) 工程現正進行中，而 2023 年將會是該計畫最繁忙的一年。

此通訊已翻譯成多種語言，您可透過各語言版本瞭解郊區鐵路環線之最新消息。



使用手機掃描 QR 碼，以獲取更多資訊或瀏覽相關網頁。

近郊铁路环线 (SuburbanRailLoop) 项目工作正在推进，2023年将是最繁忙的一年。




我们将这份通讯翻译成多种语言，帮助您及时了解近郊铁路环线项目的最新消息。



请用智能手机扫描二维码了解更多信息，或直接访问我们的网站。

More information

To find out more about Suburban Rail Loop:

-  suburbanrailloop.vic.gov.au
-  contact@srla.vic.gov.au
-  1800 105 105 (24 hours a day, 7 days a week)

Suburban Rail Loop Authority
PO Box 24214, Melbourne VIC 3001



Interpreter Service (03) 9209 0147

It should be noted that this information is current at the time of printing, however changes may occur. Please visit suburbanrailloop.vic.gov.au for the latest updates.