

ACTIONS AND ISSUES REGISTER



#	DATE RAISED	ACTION / ISSUE	OWNER	STATUS	DATE CLOSED
<i>No actions recorded</i>					



SOUTH YARRA (EASTERN PORTAL) PRECINCT

COMMUNITY REFERENCE GROUP

22 August 2023



Construction lookahead



Activity	September 23	October 23	November 23	December 23
Egress building construction	Active	Active	Planned	Planned
Egress building public realm works	Active	Active	Active	Active
William Street bridge finishing works	Active	Planned	Planned	Planned
William and Arthur Street road resurface works	Active	Active	Planned	Planned
Arthur/Chapel Street temporary traffic light removal	Active	Active	Planned	Planned
High Capacity Signalling technology testing	Active	Active	Active	Active



CONSTRUCTION UPDATE – CYP

COMPLETED WORKS

Fin installation



COMPLETED WORKS

Sandringham Occupation



ONGOING WORKS

Egress building - trade fit out and surface works

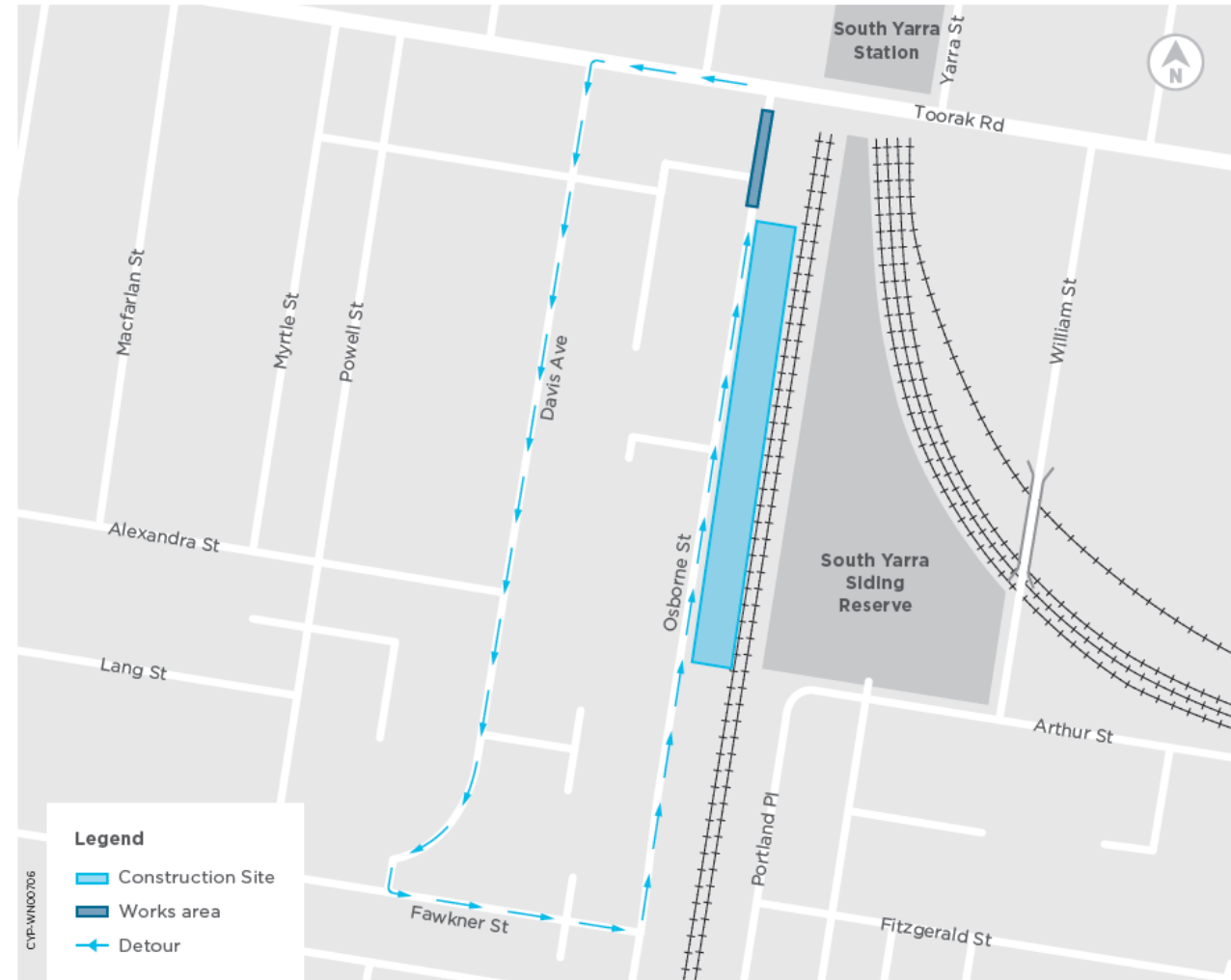


UPCOMING WORKS

Osborne Street Sewer Connection Works



- Connecting the egress building sewer into the main system
- A section of Osborne Street will be closed from 5pm to 5am each night from 22 August to 31 August (contingency dates 28 August to 1 September)
- Access to residential properties will be maintained via Davis Avenue and Fawcner Street under the guidance of traffic controllers
- No disruption to local sewer network.



Indicative Only

UPCOMING WORKS

CYP path to completion



- Sewer connection (overnight)
- Egress building commissioning (24 hours)
- Surface works, kerbs, roads, landscaping (day works)
- CitiPower works mid-September
- Rebuild road island on Osborne Street (road impacts)
- Demobilise CYP site facilities (day works)
- Site footprint to remain the same to facilitate RNA finishing works





CONSTRUCTION UPDATE - RNA

SOUTH YARRA PRECINCT



SOUTH YARRA SIDING RESERVE



2019

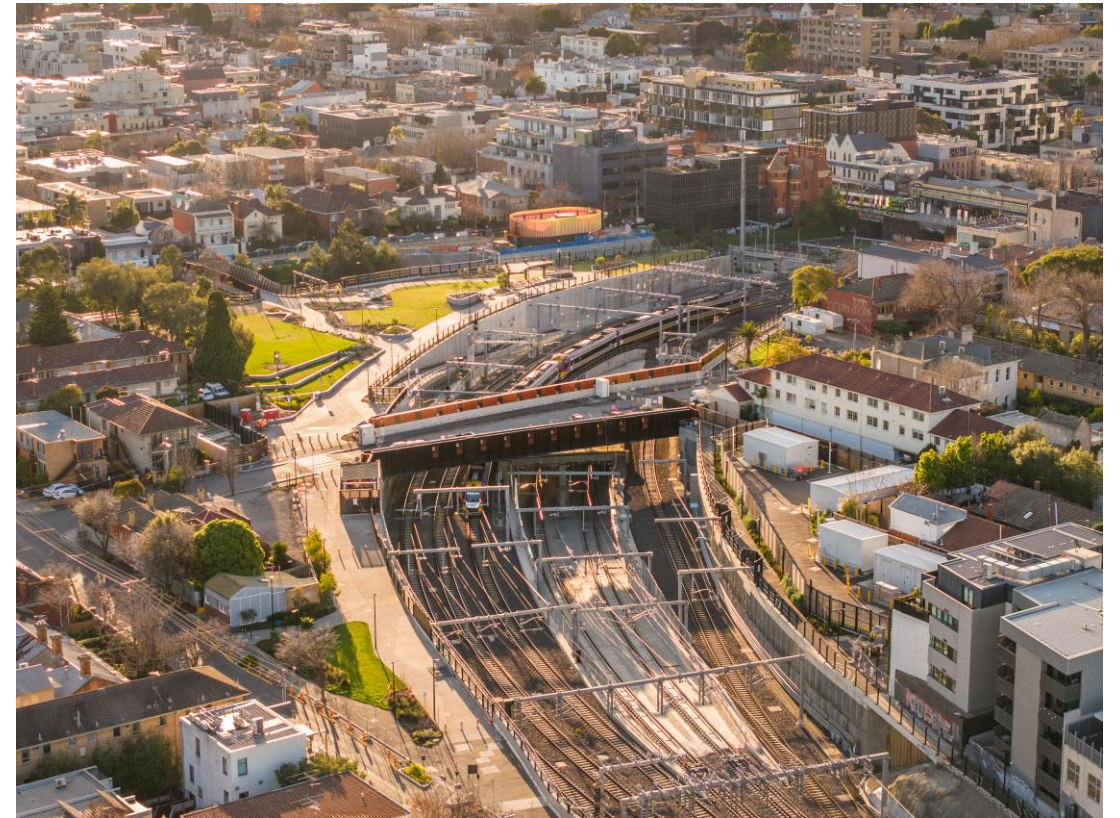


2023

WILLIAM STREET BRIDGE



2018



2023

SOUTH YARRA PRECINCT LEGACY ARTWORK

Kent Morris – Where We Walk



ONGOING WORKS

William Street bridge finishing works – August to September



- Bluestone kerbs, seating and lighting installation works
- Asphaltting the William Street bridge carriageway and footpath
- Upon completion on the William Street bridge works, reinstatement and re-sheeting works on William and Arthur Street including the removal of temporary traffic lights on Chapel Street will commence. More information regarding this will be provided closer to the date.



Indicative only.



COMMUNITY & COMMUNICATIONS UPDATE

COMMUNICATIONS

Recent and upcoming communications



Notifications and communications

Current:

- Monthly construction update – August.

Upcoming:

- William and Arthur Street resurface works notice
- Monthly construction update – September.





TUNNELS AND STATIONS PROJECT WIDE UPDATE

Anzac Station



- The base slab for the new entrance in Albert Road Reserve has now been poured
- Works are underway on the legacy intersection arrangement at Albert Road and Kings Way
- Final paving has begun at platform level of the new Anzac Station.



- Precast segments of concrete are being delivered to the City Square site over the coming months to form walls and arches within the Station
- Flinders Street northern footpath closure is currently underway, with works progressing well and the footpath due to reopen in mid-September
- Repaving works are commencing on the Flinders Street northern footpath



State Library Station



- Shaft construction is continuing at all five State Library Station sites. Excavation of the La Trobe Street shaft is now complete
- 3 of 6 beams have been delivered to the main station entrance. They were lifted directly onto the architectural columns
- Aboveground works are continuing at the Little La Trobe Street site.
- Structure and lining works are continuing within the station cavern. Platform screen doors have been installed
- Melbourne Central escalator installation works are ongoing.



Parkville Station



- Backfill across the station box is almost complete
- Ongoing façade and glazing works to canopy portals
- Architectural, mechanical, electrical and plumbing fit out works are ongoing within the station box
- Staged reinstatement and public realm works are continuing at Grattan Street, Royal Parade and Elizabeth Street.



Arden Station



- Stone tile paving is continuing at the station entrance, on the platform and concourse levels
- Architectural features and lighting fixtures continue to be installed on the platform, concourse and entrance
- Public realm legacy works have commenced on the eastern side of Laurens Street and the northern side of Barwise Street
- Landscaped elements including built in garden beds and terrace lighting are developing along Station and Laurens lanes





QUESTIONS?