

Monthly construction update

Town Hall Station

October 2023

Major construction is continuing in the CBD at the site of the future Town Hall Station. This update provides an outline of current and upcoming works in your area in October 2023.

Construction snapshot

Construction works within the Town Hall Station precinct during October 2023 include:

- Station build-out works
- Station entrance construction within the Flinders Quarter and City Square sites
- Campbell Arcade restoration works including 'Flinders Link' passenger connection
- Lift installations within the Degraves Subway at Flinders Street Station
- Protection gantry installations within Cocker Alley, Scott Alley and Royston Place
- Reinstatement works on Flinders Street to prepare for eastbound lane reopening
- Train testing through the tunnel.

Further information on these works can be found overleaf or at metrotunnel.vic.gov.au

When are we working?



Normal construction hours

7am to 6pm, Monday to Friday
7am to 1pm, Saturdays.



Out of hours

Some works are required to take place out of normal construction hours.



24 hours

24 hour works are sometimes required during peak construction activities.

Construction partner:



Cross
Yarra
Partnership



Works in your area

Structures and lining

24-hours, Monday to Sunday, ongoing



- Works to construct the underground station are continuing in the Town Hall Station precinct
- These works involve the installation of waterproofing materials, steel, and concrete within the central cavern and adits
- There will be regular truck movements to deliver steel and concrete to the acoustic shed at Federation Square and to the cavern via City Square
- Due to road permit requirements, large plant will occasionally be delivered and demobilised from the site outside of standard construction hours
- Oversize deliveries require the use of semi-trailers, trucks, and a tower crane and are expected to generate low to medium levels of noise and vibration.

City Square concrete pump use

Collins Street and Flinders Lane

6:30am to 8pm, Monday to Friday,
6:30am to 1:30pm Saturdays,
10pm to 6am Monday to Friday
(limited night shifts, as required)



- Concrete pumps are operating on Collins Street and Flinders Lane to support concrete pours within the cavern and adits
- Concrete trucks will access the loading bays on Collins Street and Flinders Lane to supply the concrete pumps and the pumps will generate periods of medium level noise and some vibration
- The areas around the concrete pump have been hoarded to protect pedestrians moving
- Concrete pours must be continuous to ensure structural integrity and therefore may occasionally continue outside of standard construction hours
- Concrete pours and concrete finishing works involve regular deliveries, and the use of concrete trucks, concrete pumps, concrete vibrators, diesel generators and diesel-powered concrete finishing equipment.

City Square pre-cast panel deliveries

Flinders Lane

7am to 4pm, Friday 6 October
(date subject to change)



- Pre-cast deliveries will be lifted off trucks by a mobile crane and then lifted into site by the tower crane
- During these lifts, Flinders Lane will be closed to traffic from 7am to 4pm between Russell Street and Swanston Street
- Driveway access will be maintained to properties on Flinders Lane between Russell Street and Regent Place, and vehicles exiting carparks on Flinders Lane will be required to travel east to Russell Street
- Traffic management and a detour using Flinders Street or Collins Street will be in place
- Access to properties on Flinders Lane between Swanston and Elizabeth streets will need to enter Flinders Lane via Elizabeth Street under a contraflow arrangement.

Station entrance construction

City Square site

7am to 1am, Monday to Friday
7am to 2pm, Saturdays



- Works will continue to build the slabs, walls, and columns, and install mechanical, electrical and plumbing infrastructure within the City Square shaft
- These works involve the installation of waterproofing materials, steel, and concrete
- These works will include the installation of infrastructure to support mechanical, electrical and plumbing services
- There will be regular truck movements to deliver steel and concrete to the City Square site via the Collins Street and Flinders Lane loading bays
- These works are expected to generate low levels of noise and vibration
- The tower cranes will be used as required until 1am weeknights and 2pm Saturdays. This will generate intermittent low to medium levels of noise.

Station entrance construction

Flinders Quarter site



Shotcreting, waterproofing and steel fixing

24-hours (as required) Monday to Saturday
8am to 4pm, Saturdays and Sundays

Concrete pours

24-hours, 7 days (as required)

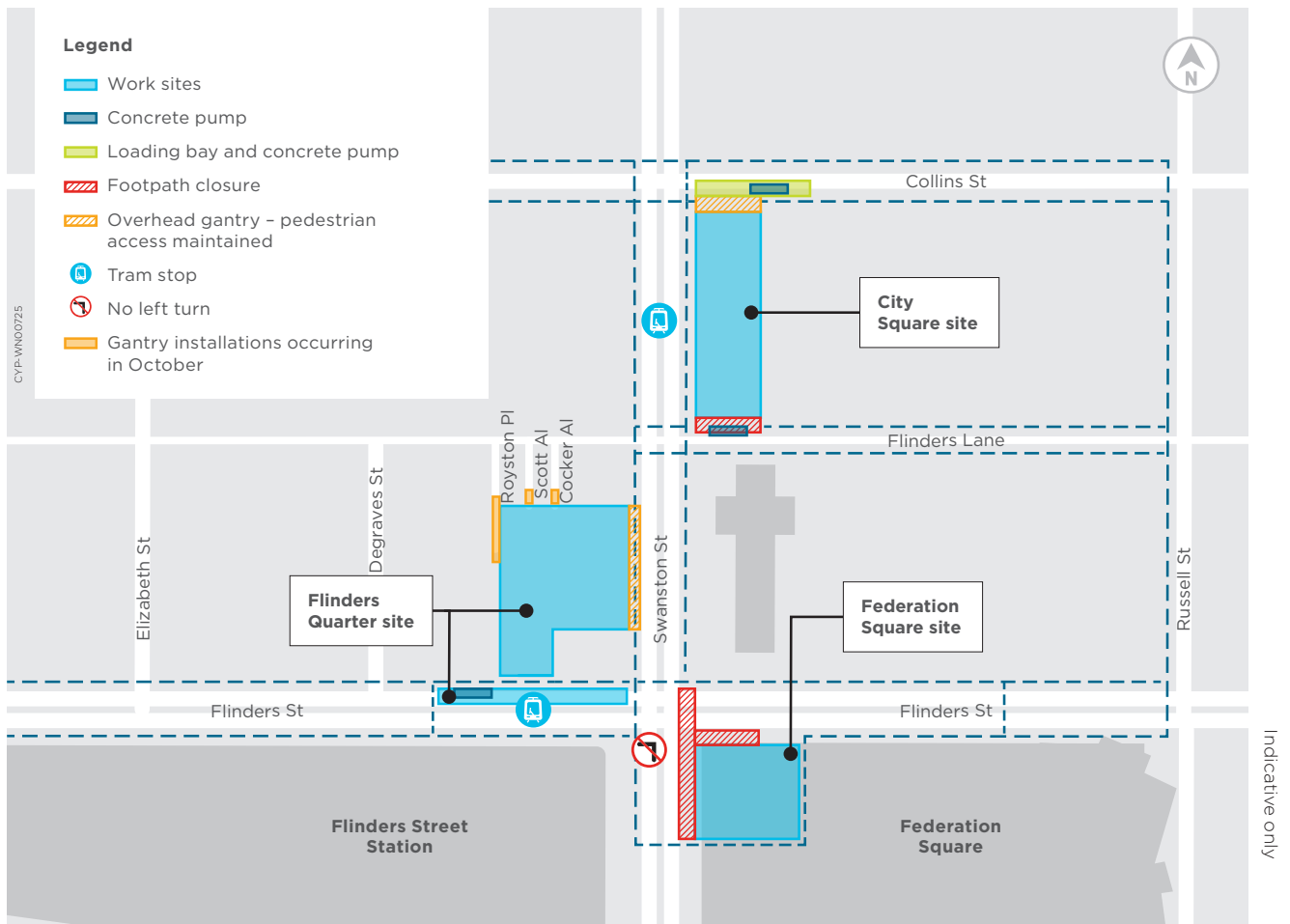
Tower crane

7am to 1am (as required)

Mobile crane

7am to 1am (as required)

- The tower crane will operate as required until 1am weeknights and Saturdays, and 8am to 6pm Sundays, and may generate intermittent periods of medium levels of noise
- A 200-tonne mobile crane will be used as required until 1am weeknights and Saturdays, and 8am to 6pm Sundays, and will generate intermittent medium levels of noise as equipment is lifted into the site
- Trucks will access the Flinders Quarter site to and from via the Swanston Street driveway
- Construction of the shaft floors, walls and columns involves steel fixing, waterproofing, installing formwork and concrete pours
- Steel fixing and shotcreting works will take place below ground floor level, 24 hours on weekdays as required
- Shotcrete works require the use of a concrete pump and concrete trucks accessing the site as required throughout the works
- Waterproofing and formwork installation works continue under the ground floor level, 24 hours a day on weekdays and between 8am and 4pm on weekends. These works involve the use of hand tools, diesel generators, power tools, a telehandler, and a tower crane, and are expected to generate low levels of noise



- Concrete pours must be continuous to ensure structural integrity and therefore may occasionally continue outside of standard construction hours
- Concrete pours and concrete finishing works involve regular deliveries, and the use of concrete trucks, concrete pumps, concrete vibrators, diesel generators and diesel-powered concrete finishing equipment
- Concrete pours are expected to generate medium levels of noise and vibration, and concrete finishing works are expected to generate low levels of noise and vibration
- Where possible, every effort will be made to undertake concrete pours during standard construction hours to minimise disruption to surrounding properties.

Oversize deliveries

Flinders Quarter site 10pm to 7am, ongoing



- Oversize trucks with deliveries will access the Flinders Quarter site via the Swanston Street driveway
- Due to road permit requirements, large plant will occasionally be delivered and demobilised from the site outside of standard construction hours
- Oversize deliveries require the use of semi-trailers, trucks, and a tower crane and are expected to generate low to medium levels of noise
- Directly impacted stakeholders will be provided more information prior to deliveries taking place outside of standard construction hours.

Gantry installation works

Royston Place, Scott Alley and Cocker Alley

24 hours, commencing October
for up to 4 weeks



- During October works will commence to install overhead protection gantries at the Flinders Quarter site boundaries on Royston Place, Scott Alley and Cocker Alley (refer to map for locations)
- These gantries will cover approximately five metres overhead from the site boundaries and will allow above ground construction at the site to take place whilst the laneways remain operational
- Once the protection gantries are installed, they will not impact on the operation or access to the laneways, or encroach on windows, doors or balconies of surrounding buildings
- Works to install the gantries will include structural steel installation and the use of rattle guns.

Flinders Street reinstatement works

Flinders Street between Swanston and Elizabeth streets

24 hours in October for up to 3 weeks



- In September, we completed works along the Flinders Street northern footpath at the site entrance, including repaving. The footpath is now re-opened to way through foot traffic
- Works also commenced to remove the temporary pedestrian crossing on Flinders Street between Woolworths Metro and Flinders Street Station
- The focus now shifts to reopening one lane of Flinders Street eastbound to traffic, which includes removing temporary infrastructure, road resurfacing, line marking and the re-phasing of lights
- To support these works, there will be some short-term road and footpath narrowing and closures. Some of these works will take place in the late night and early morning to minimise impacts on pedestrians, trams, road users, cyclists and businesses. Please pay attention to signage in the area.

Flinders Link pedestrian connection construction

Campbell Arcade

7am to 6pm, Monday to Friday,
and 7am to 1pm, Saturdays, ongoing



- Works to restore Campbell Arcade and construct the future underground pedestrian connection between Town Hall Station and Flinders Street Station, known as the 'Flinders Link', will continue.

Degraves Subway

7am to 6pm, Monday to Friday,
and 7am to 1pm, Saturdays, ongoing

- Works to install lifts between the Degraves Subway and platform level at Flinders Street Station will continue
- These works will be carried out during the day behind the blue hoarding on all Flinders Street Station platforms
- There will be no impacts to surrounding buildings. Commuters may experience intermittent noise for the duration of these works.

Traffic and transport impacts

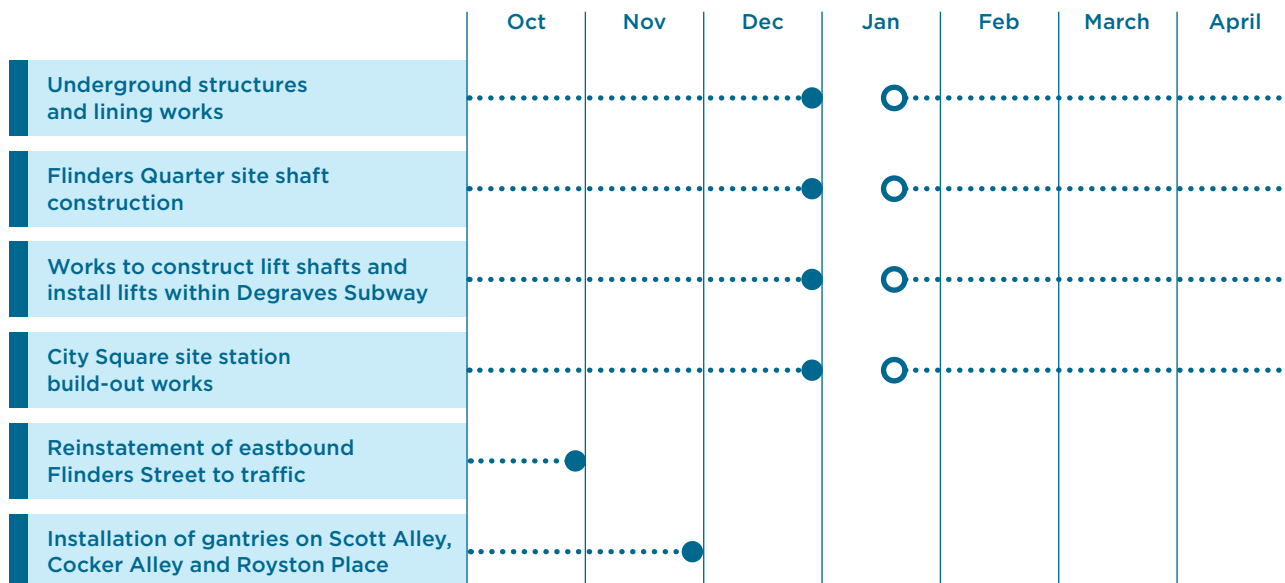
Temporary

- A traffic closure on Flinders Lane between Russell Street and Swanston Street, scheduled for Friday 6 October, for precast deliveries. Traffic management and signed detours will be in place and pedestrian and local access will be maintained
- Some late evening short-term closures or narrowing of the Flinders Street southern and northern footpaths, between 10pm and 6am, during works to reinstate one lane of Flinders Street eastbound
- Some short-term night time road closures of Flinders Street westbound during line marking, resurfacing and traffic light rephasing works.

Ongoing

- Ongoing closure of Flinders Street eastbound lanes between Swanston and Elizabeth streets
- Ongoing long-term closure of the southern footpath on Flinders Street adjacent to the Federation Square site, with pedestrian diversions in place through Federation Square
- Ongoing closure of the left turning lane from St Kilda Road to Flinders Street
- Temporary closure of the Flinders Street north-south pedestrian crossing between St Paul's Cathedral and Federation Square
- Temporary holding of traffic on Flinders Lane, Swanston, and Collins streets for up to three minutes to enable the delivery of equipment and materials
- Ongoing use of boom gate and swing gate controls to pedestrian traffic on Swanston, and Collins streets to facilitate safe truck ingress and egress
- Intermittent stopping of pedestrians on the corner of Swanston Street and Flinders Lane for the egress of construction vehicles
- Concrete trucks will intermittently park in the loading bay on Collins Street, adjacent to the City Square site for up to 30 minutes to enable concrete testing to take place
- Full closure of Campbell Arcade whilst Flinders Link pedestrian connection works take place
- Full closure of Degraves Subway from Flinders Street Station while lift installation works take place.

Look ahead for 2023 - 2024



Program is indicative and subject to change

Business support


While the new Town Hall Station will be a significant boost for the local area, construction activities can impact local businesses.


In response to this, our Business Support Team assists businesses through the disruption and any permanent changes that will take place.

Please see the promotion in this notification for **Kata Kita**, located at 266 La Trobe St, Melbourne.

We look forward to promoting more local businesses as the project progresses.

More information

 metrotunnel.vic.gov.au

 1800 105 105
(24 hours a day, 7 days a week)

Rail Projects Victoria
PO Box 2392, Melbourne, VIC 3001



Interpreter Service (03) 9209 0147

It should be noted that this information is current at the time of printing, however due to unforeseen circumstances, changes may occur. Please visit railprojects.vic.gov.au for the latest updates.

INDO STREET MIX RICE FOR LUNCH



From
\$18.5



266 La Trobe St, Melbourne

**KATA
KITA**